

Feed-through terminal block - PT 1,5/S

3208100

<https://www.phoenixcontact.com/de/produkte/3208100>

Please be informed that the data shown in this PDF document is generated from our Online Catalog. Please find the complete data in the user documentation. Our General Terms of Use for Downloads are valid.



Feed-through terminal block, nom. voltage: 500 V, nominal current: 17.5 A, connection method: Push-in connection, 1 level, Rated cross section: 1.5 mm², cross section: 0.14 mm² - 1.5 mm², mounting type: NS 35/7,5, NS 35/15, color: gray

Your advantages

- In addition to the testing facility in the double function shaft, all terminal blocks provide an additional test connection
- The compact design and front connection enable wiring in a confined space
- The Push-in connection terminal blocks are characterized by the system features of the CLIPLINE complete system and by easy and tool-free wiring of conductors with ferrules or solid conductors
- Tested for railway applications

Feed-through terminal block - PT 1,5/S



3208100

<https://www.phoenixcontact.com/de/produkte/3208100>

Commercial Data

Item number	3208100
Packing unit	50 pc
Minimum order quantity	50 pc
Sales Key	A1 - Reihenklennen
Product Key	BE2211
Catalog Page	Page 39 (C-1-2019)
GTIN	4046356564410
Weight per Piece (including packing)	3,6 g
Weight per Piece (excluding packing)	3,587 g
Customs tariff number	85369010
Country of origin	DE

Feed-through terminal block - PT 1,5/S



3208100

<https://www.phoenixcontact.com/de/produkte/3208100>

Technical Data

Product properties

Product type	Feed-through terminal block
Area of application	Railway industry
	Machine building
	Plant engineering
Number of connections	2
Number of rows	1
Potentials	1

Insulation characteristics

Overvoltage category	III
Degree of pollution	3

Electrical properties

Rated surge voltage	6 kV
Maximum power dissipation for nominal condition	0.56 W

Connection data

Number of connections per level	2
Nominal cross section	1.5 mm ²

1 level

Stripping length	8 mm ... 10 mm
Internal cylindrical gage	A1 / B1
Conductor cross section solid	0.14 mm ² ... 1.5 mm ²
Cross section AWG	26 ... 14
Conductor cross section flexible	0.14 mm ² ... 1.5 mm ²
Conductor cross section, flexible [AWG]	26 ... 14
Flexible conductor cross section flexible (ferrule, w/o plastic sleeve)	0.14 mm ² ... 1.5 mm ²
Flexible conductor cross section (ferrule with plastic sleeve)	0.14 mm ² ... 1 mm ² Using the AI-S 1-8 TQ ferrule, Item No. 1200293, is recommended
Nominal current	17.5 A
Maximum load current	17.5 A
Nominal voltage	500 V
Nominal cross section	1.5 mm ²

1 level Connection cross sections directly pluggable

Conductor cross section solid	0.25 mm ² ... 1.5 mm ²
Flexible conductor cross section flexible (ferrule, w/o plastic sleeve)	0.34 mm ² ... 1.5 mm ²
Flexible conductor cross section (ferrule with plastic sleeve)	0.34 mm ² ... 1 mm ²

Ex data

Feed-through terminal block - PT 1,5/S



3208100

<https://www.phoenixcontact.com/de/produkte/3208100>

Rated data (ATEX/IECEX)

ATEX certificate	SEV 13 ATEX 0159 U
IEC Ex certificate	IECEX SEV 13.0005 U
Identification	Ex eb IIC Gb
Operating temperature range	-60 °C ... 110 °C
Ex-certified accessories	3208142 D-PT 1,5/S 3030721 ATP-ST 4 1204504 SZF 0-0,4X2,5 3022276 CLIPFIX 35-5 3022218 CLIPFIX 35
Bridge data	14.5 A / 1.5 mm ²
Ex temperature increase	40 K (15 A / 1.5 mm ²)
Rated voltage	320 V
for bridging with bridge	352 V
- At bridging between non-adjacent terminal blocks	220 V
- At bridging between non-adjacent terminal blocks via PE terminal block	220 V
- At cut-to-length bridging	166 V
- At cut-to-length bridging with cover	275 V
- At cut-to-length bridging with partition plate	352 V
Rated insulation voltage	320 V

Ex level General

Rated current	15 A
Maximum load current	15 A
Contact resistance	1.3 mΩ

Ex connection data General

Nominal cross section	1.5 mm ²
Rated cross section AWG	16
Connection capacity rigid	0.14 mm ² ... 1.5 mm ²
Connection capacity AWG	26 ... 16
Connection capacity flexible	0.14 mm ² ... 1.5 mm ²
Connection capacity AWG	26 ... 16

Dimensions

Width	3.5 mm
End cover width	2.2 mm
Height	30.5 mm
Height NS 35/15	39.5 mm
Height NS 35/7,5	32 mm
Length	45 mm

Material specifications

Color	gray
-------	------

Feed-through terminal block - PT 1,5/S



3208100

<https://www.phoenixcontact.com/de/produkte/3208100>

Flammability rating according to UL 94	V0
Insulating material group	I
Insulating material	PA
Static insulating material application in cold	-60 °C
Temperature index of insulation material (DIN EN 60216-1 (VDE 0304-21))	130 °C
Relative insulation material temperature index (Elec., UL 746 B)	130 °C
Fire protection for rail vehicles (DIN EN 45545-2) R22	HL 1 - HL 3
Fire protection for rail vehicles (DIN EN 45545-2) R23	HL 1 - HL 3
Fire protection for rail vehicles (DIN EN 45545-2) R24	HL 1 - HL 3
Fire protection for rail vehicles (DIN EN 45545-2) R26	HL 1 - HL 3
Calorimetric heat release NFPA 130 (ASTM E 1354)	28 MJ/kg
Surface flammability NFPA 130 (ASTM E 162)	passed
Specific optical density of smoke NFPA 130 (ASTM E 662)	passed
Smoke gas toxicity NFPA 130 (SMP 800C)	passed

Electrical tests

Surge voltage test

Test voltage setpoint	7.3 kV
Result	Test passed

Temperature-rise test

Requirement temperature-rise test	Increase in temperature \leq 45 K
Result	Test passed
Short-time withstand current 1.5 mm ²	0.18 kA
Result	Test passed

Power-frequency withstand voltage

Test voltage setpoint	1.89 kV
Result	Test passed

Mechanical properties

Mechanical data

Open side panel	Yes
-----------------	-----

Mechanical tests

Mechanical strength

Result	Test passed
--------	-------------

Attachment on the carrier

DIN rail/fixing support	NS 35
Test force setpoint	1 N
Result	Test passed

Test for conductor damage and slackening

Feed-through terminal block - PT 1,5/S



3208100

<https://www.phoenixcontact.com/de/produkte/3208100>

Rotation speed	10 rpm
Revolutions	135
Conductor cross section/weight	0.14 mm ² / 0.2 kg 1.5 mm ² / 0.4 kg
Result	Test passed

Environmental and real-life conditions

Aging

Result	Test passed
--------	-------------

Needle-flame test

Time of exposure	30 s
Result	Test passed

Oscillation/broadband noise

Specification	DIN EN 50155 (VDE 0115-200):2018-05
Spectrum	Service life test category 2, bogie-mounted
Frequency	$f_1 = 5 \text{ Hz}$ to $f_2 = 250 \text{ Hz}$
ASD level	6.12 (m/s ²) ² /Hz
Acceleration	3.12g
Test duration per axis	5 h
Test directions	X-, Y- and Z-axis
Result	Test passed

Shocks

Specification	DIN EN 50155 (VDE 0115-200):2018-05
Pulse shape	Half-sine
Acceleration	30g
Shock duration	18 ms
Number of shocks per direction	3
Test directions	X-, Y- and Z-axis (pos. and neg.)
Result	Test passed

Ambient conditions

Ambient temperature (operation)	-60 °C ... 105 °C (max. short-term operating temperature RTI Elec.)
Ambient temperature (storage/transport)	-25 °C ... 60 °C (for a short time, not exceeding 24 h, -60 °C to +70 °C)
Ambient temperature (assembly)	-5 °C ... 70 °C
Ambient temperature (actuation)	-5 °C ... 70 °C
Permissible humidity (storage/transport)	30 % ... 70 %

Standards and regulations

Connection in acc. with standard	IEC 60947-7-1
----------------------------------	---------------

Mounting

Feed-through terminal block - PT 1,5/S



3208100

<https://www.phoenixcontact.com/de/produkte/3208100>

Mounting type	NS 35/7,5
	NS 35/15

Feed-through terminal block - PT 1,5/S

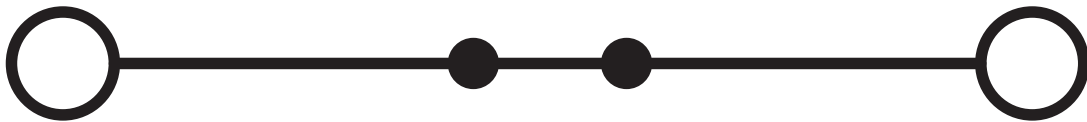
3208100

<https://www.phoenixcontact.com/de/produkte/3208100>



Drawings

Circuit diagram



Feed-through terminal block - PT 1,5/S



3208100

<https://www.phoenixcontact.com/de/produkte/3208100>

Approvals

DNV

Approval ID: TAE00003JE



CSA

Approval ID: 13631

	Nominal Voltage U_N	Nominal Current I_N	Cross Section AWG	Cross Section mm^2
Use group B	300 V	15 A	26 - 14	-
Use group C	300 V	15 A	26 - 14	-
Use group D	600 V	5 A	26 - 14	-



IECEE CB Scheme

Approval ID: DE1-62964

	Nominal Voltage U_N	Nominal Current I_N	Cross Section AWG	Cross Section mm^2
	500 V		-	0.14 - 1.5



EAC

Approval ID: RU C-DE.AI30.B.01102



cULus Recognized

Approval ID: E60425

	Nominal Voltage U_N	Nominal Current I_N	Cross Section AWG	Cross Section mm^2
Use group B	300 V	15 A	26 - 14	-
Use group C	300 V	15 A	26 - 14	-
Use group D	600 V	5 A	26 - 14	-



LR

Approval ID: 12/20038 (E3)



NK

Approval ID: 14ME0912

Feed-through terminal block - PT 1,5/S



3208100

<https://www.phoenixcontact.com/de/produkte/3208100>



RS

Approval ID: 17.00013.272



BV

Approval ID: 39980/B0 BV



VDE Zeichengenehmigung

Approval ID: 40039739

Nominal Voltage U_N

Nominal Current I_N

Cross Section AWG

Cross Section mm^2

500 V

17.5 A

-

0.14 - 1.5

ABS

Approval ID: 21-2192245-PDA



EAC Ex

Approval ID: RU C-DE.AB72.B.02351



IECEx

Approval ID: IECEx SEV13.0005U



ATEX

Approval ID: SEV13ATEX0159U



CCC

Approval ID: 2020322313000631



NEPSI

Approval ID: GYJ20.1198U

Feed-through terminal block - PT 1,5/S



3208100

<https://www.phoenixcontact.com/de/produkte/3208100>

Classifications

ECLASS

ECLASS-9.0	27141120
ECLASS-10.0.1	27141120
ECLASS-11.0	27141120

ETIM

ETIM 8.0	EC000897
----------	----------

UNSPSC

UNSPSC 21.0	39121400
-------------	----------

Feed-through terminal block - PT 1,5/S



3208100

<https://www.phoenixcontact.com/de/produkte/3208100>

Environmental Product Compliance

China RoHS	Environmentally friendly use period: unlimited = EFUP-e
	No hazardous substances above threshold values

Feed-through terminal block - PT 1,5/S

3208100

<https://www.phoenixcontact.com/de/produkte/3208100>

Accessories

i Note: Applying some accessories below might limit this product.

Plug-in bridge

Plug-in bridge - FBS 2-3,5 - 3213014

<https://www.phoenixcontact.com/de/produkte/3213014>



Plug-in bridge, pitch: 3.5 mm, color: red

i Max. current carrying capacity: 17.5 A

Plug-in bridge

Plug-in bridge - FBS 3-3,5 - 3213027

<https://www.phoenixcontact.com/de/produkte/3213027>



Plug-in bridge, pitch: 3.5 mm, color: red

i Max. current carrying capacity: 17.5 A

Feed-through terminal block - PT 1,5/S

3208100

<https://www.phoenixcontact.com/de/produkte/3208100>




Plug-in bridge

Plug-in bridge - FBS 4-3,5 - 3213030

<https://www.phoenixcontact.com/de/produkte/3213030>



Plug-in bridge, pitch: 3.5 mm, color: red

 Max. current carrying capacity: 17.5 A

Plug-in bridge

Plug-in bridge - FBS 5-3,5 - 3213043

<https://www.phoenixcontact.com/de/produkte/3213043>



Plug-in bridge, pitch: 3.5 mm, color: red

 Max. current carrying capacity: 17.5 A

Feed-through terminal block - PT 1,5/S

3208100

<https://www.phoenixcontact.com/de/produkte/3208100>




Plug-in bridge

Plug-in bridge - FBS 10-3,5 - 3213056

<https://www.phoenixcontact.com/de/produkte/3213056>



Plug-in bridge, pitch: 3.5 mm, color: red

 Max. current carrying capacity: 17.5 A

Plug-in bridge

Plug-in bridge - FBS 20-3,5 - 3213069

<https://www.phoenixcontact.com/de/produkte/3213069>



Plug-in bridge, pitch: 3.5 mm, color: red

 Max. current carrying capacity: 17.5 A

Feed-through terminal block - PT 1,5/S

3208100

<https://www.phoenixcontact.com/de/produkte/3208100>




Plug-in bridge

Plug-in bridge - FBS 2-3,5 BU - 3213086

<https://www.phoenixcontact.com/de/produkte/3213086>



Plug-in bridge, pitch: 3.5 mm, color: blue

 Max. current carrying capacity: 17.5 A


Plug-in bridge

Plug-in bridge - FBS 3-3,5 BU - 3213099

<https://www.phoenixcontact.com/de/produkte/3213099>



Plug-in bridge, pitch: 3.5 mm, color: blue

 Max. current carrying capacity: 17.5 A

Feed-through terminal block - PT 1,5/S

3208100

<https://www.phoenixcontact.com/de/produkte/3208100>




Plug-in bridge

Plug-in bridge - FBS 4-3,5 BU - 3213109

<https://www.phoenixcontact.com/de/produkte/3213109>



Plug-in bridge, pitch: 3.5 mm, color: blue

 Max. current carrying capacity: 17.5 A

Plug-in bridge

Plug-in bridge - FBS 5-3,5 BU - 3213112

<https://www.phoenixcontact.com/de/produkte/3213112>



Plug-in bridge, pitch: 3.5 mm, color: blue

 Max. current carrying capacity: 17.5 A

Feed-through terminal block - PT 1,5/S

3208100

<https://www.phoenixcontact.com/de/produkte/3208100>




Plug-in bridge

Plug-in bridge - FBS 10-3,5 BU - 3213125

<https://www.phoenixcontact.com/de/produkte/3213125>



Plug-in bridge, pitch: 3.5 mm, color: blue

 Max. current carrying capacity: 17.5 A

Plug-in bridge

Plug-in bridge - FBS 20-3,5 BU - 3213138

<https://www.phoenixcontact.com/de/produkte/3213138>



Plug-in bridge, pitch: 3.5 mm, color: blue

 Max. current carrying capacity: 17.5 A

Feed-through terminal block - PT 1,5/S

3208100

<https://www.phoenixcontact.com/de/produkte/3208100>




Plug-in bridge

Plug-in bridge - FBS 2-3,5 GY - 3213153

<https://www.phoenixcontact.com/de/produkte/3213153>



Plug-in bridge, pitch: 3.5 mm, color: gray

 Max. current carrying capacity: 17.5 A


Plug-in bridge

Plug-in bridge - FBS 3-3,5 GY - 3213167

<https://www.phoenixcontact.com/de/produkte/3213167>



Plug-in bridge, pitch: 3.5 mm, color: gray

 Max. current carrying capacity: 17.5 A

Feed-through terminal block - PT 1,5/S

3208100

<https://www.phoenixcontact.com/de/produkte/3208100>




Plug-in bridge

Plug-in bridge - FBS 4-3,5 GY - 3213180

<https://www.phoenixcontact.com/de/produkte/3213180>



Plug-in bridge, pitch: 3.5 mm, color: gray

 Max. current carrying capacity: 17.5 A


Plug-in bridge

Plug-in bridge - FBS 5-3,5 GY - 3213183

<https://www.phoenixcontact.com/de/produkte/3213183>



Plug-in bridge, pitch: 3.5 mm, color: gray

 Max. current carrying capacity: 17.5 A

Feed-through terminal block - PT 1,5/S

3208100

<https://www.phoenixcontact.com/de/produkte/3208100>



Plug-in bridge

Plug-in bridge - FBS 10-3,5 GY - 3213196

<https://www.phoenixcontact.com/de/produkte/3213196>



Plug-in bridge, pitch: 3.5 mm, color: gray

 Max. current carrying capacity: 17.5 A


Plug-in bridge

Plug-in bridge - FBS 20-3,5 GY - 3213206

<https://www.phoenixcontact.com/de/produkte/3213206>



Plug-in bridge, pitch: 3.5 mm, color: gray

 Max. current carrying capacity: 17.5 A

Feed-through terminal block - PT 1,5/S

3208100

<https://www.phoenixcontact.com/de/produkte/3208100>




Reducing bridge

Reducing bridge - RB ST (2,5/4)-1,5/S - 3214356

<https://www.phoenixcontact.com/de/produkte/3214356>



Reducing bridge, pitch: 6.7 mm, color: red

 Max. current carrying capacity: 24 A


Reducing bridge

Reducing bridge - RB ST 16-1,5/S - 3213254

<https://www.phoenixcontact.com/de/produkte/3213254>



Reducing bridge, pitch: 10 mm, color: red

 Max. current carrying capacity: 24 A

Feed-through terminal block - PT 1,5/S

3208100

<https://www.phoenixcontact.com/de/produkte/3208100>




Reducing bridge

Reducing bridge - RB ST 10-1,5/S - 3213252

<https://www.phoenixcontact.com/de/produkte/3213252>



Reducing bridge, pitch: 3.5 mm, color: red

 Max. current carrying capacity: 24 A

Group marker label for terminal marking

Group marker label for terminal marking - GBS-ZB/26X6 - 0809298

<https://www.phoenixcontact.com/de/produkte/0809298>



Group marking label, snaps onto terminal center for screw, spring-cage and quick connection terminal blocks, labeled with ESL 26x6 mm or EST 25x6 mm, in the foot part with Zack marker strip, length: 29 mm

Feed-through terminal block - PT 1,5/S

3208100

<https://www.phoenixcontact.com/de/produkte/3208100>

DIN rail perforated

DIN rail perforated - NS 35/ 7,5 PERF 2000MM - 0801733

<https://www.phoenixcontact.com/de/produkte/0801733>



DIN rail perforated, acc. to EN 60715, material: Steel, galvanized, passivated with a thick layer, Standard profile, color: silver, Pack of 25 (50 m)

Screwdriver

Screwdriver - SZF 0-0,4X2,5 - 1204504

<https://www.phoenixcontact.com/de/produkte/1204504>



Actuation tool, for ST terminal blocks, also suitable for use as a bladed screwdriver, size: 0.4 x 2.5 x 75 mm, 2-component grip, with non-slip grip

Feed-through terminal block - PT 1,5/S

3208100

<https://www.phoenixcontact.com/de/produkte/3208100>

DIN rail, unperforated

DIN rail, unperforated - NS 35/ 7,5 UNPERF 2000MM - 0801681

<https://www.phoenixcontact.com/de/produkte/0801681>



DIN rail, unperforated, acc. to EN 60715, material: Steel, galvanized, passivated with a thick layer, Standard profile, color: silver, Pack of 25 (50 m)

Partition plate

Partition plate - ATP-ST 4 - 3030721

<https://www.phoenixcontact.com/de/produkte/3030721>



Partition plate, length: 59.8 mm, width: 2 mm, height: 39 mm, color: gray

Feed-through terminal block - PT 1,5/S

3208100

<https://www.phoenixcontact.com/de/produkte/3208100>

DIN rail perforated

DIN rail perforated - NS 35/ 7,5 WH PERF 2000MM - 1204119

<https://www.phoenixcontact.com/de/produkte/1204119>



DIN rail perforated, acc. to EN 60715, material: Steel, Galvanized, white passivated, Standard profile, color: silver, Pack of 25 (50 m)

End cover

End cover - D-PT 1,5/S - 3208142

<https://www.phoenixcontact.com/de/produkte/3208142>

End cover, length: 45 mm, width: 2.2 mm, height: 24.3 mm, color: gray



Feed-through terminal block - PT 1,5/S

3208100

<https://www.phoenixcontact.com/de/produkte/3208100>

DIN rail, unperforated

DIN rail, unperforated - NS 35/ 7,5 WH UNPERF 2000MM-VPE 10 - 1204122

<https://www.phoenixcontact.com/de/produkte/1204122>



DIN rail, unperforated, acc. to EN 60715, material: Steel, Galvanized, white passivated, Standard profile, color: silver, Pack of 10 (20 m)

Mounting material

Mounting material - PT-IL - 3208090

<https://www.phoenixcontact.com/de/produkte/3208090>

Operating decal for the push-in Technology



Feed-through terminal block - PT 1,5/S

3208100

<https://www.phoenixcontact.com/de/produkte/3208100>

DIN rail, unperforated

DIN rail, unperforated - NS 35/ 7,5 AL UNPERF 2000MM - 0801704

<https://www.phoenixcontact.com/de/produkte/0801704>



DIN rail, unperforated, acc. to EN 60715, material: Aluminum, uncoated, Standard profile, color: silver, Pack of 25 (50 m)

Actuation tool

Actuation tool - ST-BW 0 - 1200135

<https://www.phoenixcontact.com/de/produkte/1200135>



Actuation tool, for all 1.5 mm² spring cages from PT 1,5/S and FT 1,5/S

Feed-through terminal block - PT 1,5/S

3208100

<https://www.phoenixcontact.com/de/produkte/3208100>

DIN rail perforated

DIN rail perforated - NS 35/ 7,5 ZN PERF 2000MM - 1206421

<https://www.phoenixcontact.com/de/produkte/1206421>



DIN rail perforated, acc. to EN 60715, material: Steel, galvanized, Standard profile, color: silver, Pack of 25 (50 m)

End cover

End cover - D-PT 1,5/S-0,8 OG - 1029569

<https://www.phoenixcontact.com/de/produkte/1029569>

End cover, length: 45 mm, width: 0.8 mm, height: 24.3 mm, color: orange



Feed-through terminal block - PT 1,5/S

3208100

<https://www.phoenixcontact.com/de/produkte/3208100>

DIN rail, unperforated

DIN rail, unperforated - NS 35/ 7,5 ZN UNPERF 2000MM - 1206434

<https://www.phoenixcontact.com/de/produkte/1206434>



DIN rail, unperforated, acc. to EN 60715, material: Steel, galvanized, Standard profile, color: silver, Pack of 25 (50 m)

Ferrule

Ferrule - AI-S 1 - 8 TQ - 1200293

<https://www.phoenixcontact.com/de/produkte/1200293>



Ferrule, S-Slimline, sleeve length: 8 mm, length: 14.5 mm, color: turquoise

Feed-through terminal block - PT 1,5/S

3208100

<https://www.phoenixcontact.com/de/produkte/3208100>



DIN rail, unperforated

DIN rail, unperforated - NS 35/ 7,5 CU UNPERF 2000MM-VPE 10 - 0801762

<https://www.phoenixcontact.com/de/produkte/0801762>



DIN rail, unperforated, acc. to EN 60715, material: Copper, uncoated, Standard profile, color: copper-colored, Pack of 10 (20 m)

End cap

End cap - NS 35/ 7,5 CAP - 1206560

<https://www.phoenixcontact.com/de/produkte/1206560>

DIN rail end piece, for DIN rail NS 35/7.5



Feed-through terminal block - PT 1,5/S

3208100

<https://www.phoenixcontact.com/de/produkte/3208100>

DIN rail perforated

DIN rail perforated - NS 35/15 PERF 2000MM - 1201730

<https://www.phoenixcontact.com/de/produkte/1201730>



DIN rail perforated, similar to EN 60715, material: Steel, galvanized, passivated with a thick layer, Standard profile, color: silver, Pack of 25 (50 m)

DIN rail, unperforated

DIN rail, unperforated - NS 35/15 UNPERF 2000MM - 1201714

<https://www.phoenixcontact.com/de/produkte/1201714>



DIN rail, unperforated, similar to EN 60715, material: Steel, galvanized, passivated with a thick layer, Standard profile, color: silver, Pack of 25 (50 m)

Feed-through terminal block - PT 1,5/S

3208100

<https://www.phoenixcontact.com/de/produkte/3208100>



DIN rail perforated

DIN rail perforated - NS 35/15 WH PERF 2000MM - 0806602

<https://www.phoenixcontact.com/de/produkte/0806602>



DIN rail perforated, similar to EN 60715, material: Steel, Galvanized, white passivated, Standard profile, color: white, Pack of 25 (50 m)

DIN rail, unperforated

DIN rail, unperforated - NS 35/15 WH UNPERF 2000MM-VPE 10 - 1204135

<https://www.phoenixcontact.com/de/produkte/1204135>



DIN rail, unperforated, similar to EN 60715, material: Steel, Galvanized, white passivated, Standard profile, color: silver, Pack of 10 (20 m)

Feed-through terminal block - PT 1,5/S

3208100

<https://www.phoenixcontact.com/de/produkte/3208100>

DIN rail, unperforated

DIN rail, unperforated - NS 35/15 AL UNPERF 2000MM - 1201756

<https://www.phoenixcontact.com/de/produkte/1201756>



DIN rail, unperforated, similar to EN 60715, material: Aluminum, uncoated, Standard profile, color: silver

DIN rail perforated

DIN rail perforated - NS 35/15 ZN PERF 2000MM - 1206599

<https://www.phoenixcontact.com/de/produkte/1206599>



DIN rail perforated, similar to EN 60715, material: Steel, galvanized, Standard profile, color: silver, Pack of 25 (50 m)

Feed-through terminal block - PT 1,5/S

3208100

<https://www.phoenixcontact.com/de/produkte/3208100>

DIN rail, unperforated

DIN rail, unperforated - NS 35/15 ZN UNPERF 2000MM - 1206586

<https://www.phoenixcontact.com/de/produkte/1206586>



DIN rail, unperforated, similar to EN 60715, material: Steel, galvanized, Standard profile, color: silver, Pack of 25 (50 m)

DIN rail, unperforated

DIN rail, unperforated - NS 35/15 CU UNPERF 2000MM-VPE 10 - 1201895

<https://www.phoenixcontact.com/de/produkte/1201895>



DIN rail, unperforated, similar to EN 60715, material: Copper, uncoated, Standard profile, color: copper-colored, Pack of 10 (20 m)

Feed-through terminal block - PT 1,5/S

3208100

<https://www.phoenixcontact.com/de/produkte/3208100>

End cap

End cap - NS 35/15 CAP - 1206573

<https://www.phoenixcontact.com/de/produkte/1206573>

DIN rail end piece, for DIN rail NS 35/15



DIN rail, unperforated

DIN rail, unperforated - NS 35/15-2,3 UNPERF 2000MM-VPE 10 - 1201798

<https://www.phoenixcontact.com/de/produkte/1201798>



DIN rail, unperforated, acc. to EN 60715, material: Steel, galvanized, passivated with a thick layer, Standard profile 2.3 mm, color: silver, Pack of 10 (20 m)

Feed-through terminal block - PT 1,5/S

3208100

<https://www.phoenixcontact.com/de/produkte/3208100>

Zack marker strip

Zack marker strip - ZB 3,5:UNBEDRUCKT - 0829414

<https://www.phoenixcontact.com/de/produkte/0829414>



Zack marker strip, Strip, white, unlabeled, can be labeled with: PLOTMARK, CMS-P1-PLOTTER, mounting type: snapped, for terminal block width: 3.5 mm, lettering field size: 3.5 x 10.5 mm, Number of individual labels: 10

Zack marker strip

Zack marker strip - ZB 3,5 CUS - 0829415

<https://www.phoenixcontact.com/de/produkte/0829415>



Zack marker strip, can be ordered: Strip, white, labeled according to customer specifications, mounting type: snap into tall marker groove, for terminal block width: 3.5 mm, lettering field size: 3.5 x 10.5 mm, Number of individual labels: 10

Feed-through terminal block - PT 1,5/S

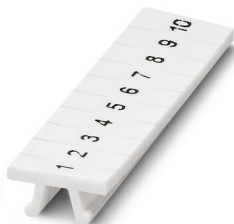
3208100

<https://www.phoenixcontact.com/de/produkte/3208100>

Zack marker strip

Zack marker strip - ZB 3,5,LGS:FORTL.ZAHLEN - 0801404

<https://www.phoenixcontact.com/de/produkte/0801404>

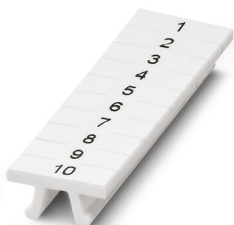


Zack marker strip, Strip, white, labeled, printed horizontally: consecutive numbers 1 ... 10, 11 ... 20, etc. up to 91 ... 100, mounting type: snapped, for terminal block width: 3.5 mm, lettering field size: 3.5 x 10.5 mm, Number of individual labels: 10

Zack marker strip

Zack marker strip - ZB 3,5,QR:FORT.ZAHLEN - 0801405

<https://www.phoenixcontact.com/de/produkte/0801405>



Zack marker strip, Strip, white, labeled, Printed vertically: consecutive numbers 1 ... 10, 11 ... 20, etc. up to 91 ... 100, mounting type: snapped, for terminal block width: 3.5 mm, lettering field size: 3.5 x 10.5 mm, Number of individual labels: 10

Feed-through terminal block - PT 1,5/S

3208100

<https://www.phoenixcontact.com/de/produkte/3208100>

Marker for terminal blocks

Marker for terminal blocks - UCT-TM 3,5 - 0829484

<https://www.phoenixcontact.com/de/produkte/0829484>



Marker for terminal blocks, Sheet, white, unlabeled, can be labeled with: TOPMARK NEO, TOPMARK LASER, BLUEMARK ID COLOR, BLUEMARK ID, BLUEMARK CLED, THERMOMARK PRIME, THERMOMARK CARD 2.0, THERMOMARK CARD, mounting type: snapped, for terminal block width: 3.5 mm, lettering field size: 2.95 x 10.5 mm, Number of individual labels: 102

Marker for terminal blocks

Marker for terminal blocks - UCT-TM 3,5 CUS - 0829581

<https://www.phoenixcontact.com/de/produkte/0829581>



Marker for terminal blocks, can be ordered: by sheet, white, labeled according to customer specifications, mounting type: snap into tall marker groove, for terminal block width: 3.5 mm, lettering field size: 2.95 x 10.5 mm, Number of individual labels: 102

Feed-through terminal block - PT 1,5/S

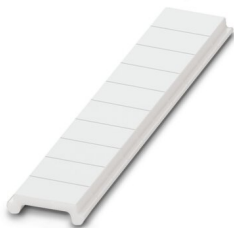
3208100

<https://www.phoenixcontact.com/de/produkte/3208100>

Zack Marker strip, flat

Zack Marker strip, flat - ZBF 3,5:UNBEDRUCKT - 0829392

<https://www.phoenixcontact.com/de/produkte/0829392>

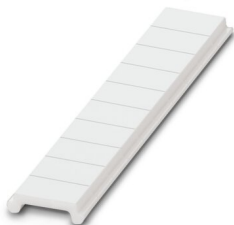


Zack Marker strip, flat, Strip, white, unlabeled, can be labeled with: PLOTMARK, CMS-P1-PLOTTER, mounting type: snapped, for terminal block width: 3.5 mm, lettering field size: 3.5 x 5.2 mm, Number of individual labels: 10

Zack Marker strip, flat

Zack Marker strip, flat - ZBF 3,5 CUS - 0829394

<https://www.phoenixcontact.com/de/produkte/0829394>



Zack Marker strip, flat, can be ordered: Strip, white, labeled according to customer specifications, mounting type: snap into flat marker groove, for terminal block width: 3.5 mm, lettering field size: 3.5 x 5.2 mm, Number of individual labels: 10

Feed-through terminal block - PT 1,5/S

3208100

<https://www.phoenixcontact.com/de/produkte/3208100>

Zack Marker strip, flat

Zack Marker strip, flat - ZBF 3,5,LGS:FORTL.ZAHLEN - 0801406

<https://www.phoenixcontact.com/de/produkte/0801406>

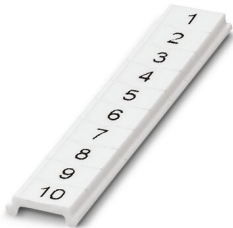


Zack Marker strip, flat, Strip, white, labeled, printed horizontally: consecutive numbers 1 ... 10, 11 ... 20, etc. up to 91 ... 100, mounting type: snapped, for terminal block width: 3.5 mm, lettering field size: 5.15 x 3.5 mm, Number of individual labels: 10

Zack Marker strip, flat

Zack Marker strip, flat - ZBF 3,5,QR:FORTL.ZAHLEN - 0801407

<https://www.phoenixcontact.com/de/produkte/0801407>



Zack Marker strip, flat, Strip, white, labeled, Printed vertically: consecutive numbers 1 ... 10, 11 ... 20, etc. up to 91 ... 100, mounting type: snapped, for terminal block width: 3.5 mm, lettering field size: 5.15 x 3.5 mm, Number of individual labels: 10

Feed-through terminal block - PT 1,5/S

3208100

<https://www.phoenixcontact.com/de/produkte/3208100>

Marker for terminal blocks

Marker for terminal blocks - UCT-TMF 3,5 - 0829486

<https://www.phoenixcontact.com/de/produkte/0829486>



Marker for terminal blocks, Sheet, white, unlabeled, can be labeled with: TOPMARK NEO, TOPMARK LASER, BLUEMARK ID COLOR, BLUEMARK ID, BLUEMARK CLED, THERMOMARK PRIME, THERMOMARK CARD 2.0, THERMOMARK CARD, mounting type: snapped, for terminal block width: 3.5 mm, lettering field size: 2.7 x 4.7 mm, Number of individual labels: 108

Marker for terminal blocks

Marker for terminal blocks - UCT-TMF 3,5 CUS - 0829644

<https://www.phoenixcontact.com/de/produkte/0829644>



Marker for terminal blocks, can be ordered: by sheet, white, labeled according to customer specifications, mounting type: snap into flat marker groove, for terminal block width: 3.5 mm, lettering field size: 2.7 x 4.7 mm, Number of individual labels: 108

Feed-through terminal block - PT 1,5/S

3208100

<https://www.phoenixcontact.com/de/produkte/3208100>

Test plugs

Test plugs - MPS-MT - 0201744

<https://www.phoenixcontact.com/de/produkte/0201744>



Test plugs, with solder connection up to 1 mm² conductor cross section, color: gray

Insulating sleeve

Insulating sleeve - MPS-IH WH - 0201663

<https://www.phoenixcontact.com/de/produkte/0201663>



Insulating sleeve, color: white

Feed-through terminal block - PT 1,5/S

3208100

<https://www.phoenixcontact.com/de/produkte/3208100>

Insulating sleeve

Insulating sleeve - MPS-IH RD - 0201676

<https://www.phoenixcontact.com/de/produkte/0201676>

Insulating sleeve, color: red

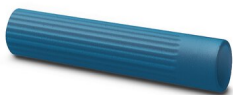


Insulating sleeve

Insulating sleeve - MPS-IH BU - 0201689

<https://www.phoenixcontact.com/de/produkte/0201689>

Insulating sleeve, color: blue



Feed-through terminal block - PT 1,5/S

3208100

<https://www.phoenixcontact.com/de/produkte/3208100>

Insulating sleeve

Insulating sleeve - MPS-IH YE - 0201692

<https://www.phoenixcontact.com/de/produkte/0201692>

Insulating sleeve, color: yellow



Insulating sleeve

Insulating sleeve - MPS-IH GN - 0201702

<https://www.phoenixcontact.com/de/produkte/0201702>

Insulating sleeve, color: green



Feed-through terminal block - PT 1,5/S

3208100

<https://www.phoenixcontact.com/de/produkte/3208100>

Insulating sleeve

Insulating sleeve - MPS-IH GY - 0201728

<https://www.phoenixcontact.com/de/produkte/0201728>

Insulating sleeve, color: gray



Insulating sleeve

Insulating sleeve - MPS-IH BK - 0201731

<https://www.phoenixcontact.com/de/produkte/0201731>

Insulating sleeve, color: black



Feed-through terminal block - PT 1,5/S

3208100

<https://www.phoenixcontact.com/de/produkte/3208100>

Software

Software - PROJECT COMPLETE - 1050453

<https://www.phoenixcontact.com/de/produkte/1050453>

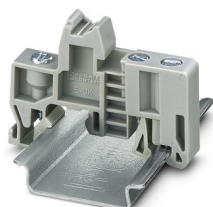


Intuitive planning and marking software for configuring terminal strips and for professional marking of marking materials for terminal blocks, conductors, cables, devices, and systems. The software is available for download

End clamp

End clamp - E/UK - 1201442

<https://www.phoenixcontact.com/de/produkte/1201442>



End clamp, material: PA, color: gray, Mounting on a DIN rail NS 32 or NS 35

Feed-through terminal block - PT 1,5/S

3208100

<https://www.phoenixcontact.com/de/produkte/3208100>

End clamp

End clamp - E/UK 1 - 1201413

<https://www.phoenixcontact.com/de/produkte/1201413>



End clamps, for supporting the ends of double-level and three-level terminal blocks, width: 10 mm, color: gray

Marker for terminal blocks

Marker for terminal blocks - TMT (EX9,5)R - 0828295

<https://www.phoenixcontact.com/de/produkte/0828295>



Marker for terminal blocks, Roll, white, unlabeled, can be labeled with: THERMOMARK ROLL 2.0, THERMOMARK ROLL, THERMOMARK ROLL X1, THERMOMARK ROLLMASTER 300/600, THERMOMARK X1.2, mounting type: snapped, snap into tall marker groove, for terminal block width: 50000 mm, lettering field size: 9.5 x 50000 mm, Number of individual labels: 1

Feed-through terminal block - PT 1,5/S

3208100

<https://www.phoenixcontact.com/de/produkte/3208100>

Marker for terminal blocks

Marker for terminal blocks - US-TM 100 - 0829255

<https://www.phoenixcontact.com/de/produkte/0829255>



Marker for terminal blocks, Card, white, unlabeled, can be labeled with: BLUEMARK ID COLOR, BLUEMARK ID, THERMOMARK PRIME, THERMOMARK CARD 2.0, THERMOMARK CARD, mounting type: snapped, lettering field size: 104 x 9.8 mm, Number of individual labels: 13

End clamp

End clamp - CLIPFIX 35 - 3022218

<https://www.phoenixcontact.com/de/produkte/3022218>



Quick mounting end clamp for NS 35/7,5 DIN rail or NS 35/15 DIN rail, with marking option, width: 9.5 mm, color: gray

Feed-through terminal block - PT 1,5/S

3208100

<https://www.phoenixcontact.com/de/produkte/3208100>

End clamp

End clamp - CLIPFIX 35-5 - 3022276

<https://www.phoenixcontact.com/de/produkte/3022276>

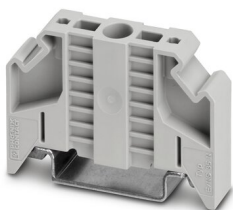


Quick mounting end clamp for NS 35/7,5 DIN rail or NS 35/15 DIN rail, with marking option, with parking option for FBS...5, FBS...6, KSS 5, KSS 6, width: 5.15 mm, color: gray

End clamp

End clamp - E/NS 35 N - 0800886

<https://www.phoenixcontact.com/de/produkte/0800886>



End clamp, width: 9.5 mm, color: gray

Feed-through terminal block - PT 1,5/S

3208100

<https://www.phoenixcontact.com/de/produkte/3208100>

Test plugs

Test plugs - PS-3,5 - 3031010

<https://www.phoenixcontact.com/de/produkte/3031010>



Test plugs, Modular test plug, color: red

Spacer plate

Spacer plate - DP PS-3,5 - 3031011

<https://www.phoenixcontact.com/de/produkte/3031011>



Spacer plate, length: 15.9 mm, width: 3.5 mm, height: 33.5 mm, number of positions: 1, color: red

Feed-through terminal block - PT 1,5/S

3208100

<https://www.phoenixcontact.com/de/produkte/3208100>

Test plugs

Test plugs - PS-3,5/E - 3031012

<https://www.phoenixcontact.com/de/produkte/3031012>



Test plugs, Individual test plug, color: red

Crimping pliers

Crimping pliers - CRIMPFOX CENTRUS 6S - 1213144

<https://www.phoenixcontact.com/de/produkte/1213144>



Crimping pliers, for uninsulated and insulated ferrules, DIN 46228 Part 1 and 4, from 0.14 mm² ... 6 mm², also for TWIN ferrules up to 2 x 4 mm², automatic cross section adjustment, lateral insertion, equipped with fall protection

Feed-through terminal block - PT 1,5/S

3208100

<https://www.phoenixcontact.com/de/produkte/3208100>

Crimping pliers

Crimping pliers - CRIMPFOX CENTRUS 10S - 1213154

<https://www.phoenixcontact.com/de/produkte/1213154>



Crimping pliers, for uninsulated and insulated ferrules, DIN 46228 Part 1 and 4, from 0.14 mm² ... 10 mm², also for TWIN ferrules up to 2 x 4 mm², automatic cross section adjustment, lateral insertion, equipped with fall protection

Crimping pliers

Crimping pliers - CRIMPFOX CENTRUS 6H - 1213146

<https://www.phoenixcontact.com/de/produkte/1213146>



Crimping pliers, for uninsulated and insulated ferrules, DIN 46228 Part 1 and 4, from 0.14 mm² ... 6 mm², also for TWIN ferrules up to 2 x 4 mm², automatic cross section adjustment, lateral insertion, equipped with fall protection

Feed-through terminal block - PT 1,5/S

3208100

<https://www.phoenixcontact.com/de/produkte/3208100>

Crimping pliers

Crimping pliers - CRIMPFOX CENTRUS 10H - 1213156

<https://www.phoenixcontact.com/de/produkte/1213156>



Crimping pliers, for uninsulated and insulated ferrules, DIN 46228 Part 1 and 4, from 0.14 mm² ... 10 mm², also for TWIN ferrules up to 2 x 4 mm², automatic cross section adjustment, lateral insertion, equipped with fall protection

Crimping pliers

Crimping pliers - CRIMPFOX 10S - 1212045

<https://www.phoenixcontact.com/de/produkte/1212045>



Crimping pliers, for ferrules without insulating collar according to DIN 46228 Part 1 and ferrules with insulating collar according to DIN 46228 Part 4, 0.14 mm² ... 10 mm², unlockable pressure lock, lateral entry

Feed-through terminal block - PT 1,5/S

3208100

<https://www.phoenixcontact.com/de/produkte/3208100>

Crimping pliers

Crimping pliers - CRIMPFOX 6H - 1212046

<https://www.phoenixcontact.com/de/produkte/1212046>



Crimping pliers, for ferrules without insulating collar according to DIN 46228 Part 1 and ferrules with insulating collar according to DIN 46228 Part 4, 0.14 mm² ... 6 mm², unlockable pressure lock, lateral entry

Crimping pliers

Crimping pliers - CRIMPFOX 2,5-M - 1212719

<https://www.phoenixcontact.com/de/produkte/1212719>



Crimping pliers, for ferrules without insulating collar according to DIN 46228 Part 1 and ferrules with insulating collar according to DIN 46228 Part 4, 0.25 mm² ... 2.5 mm², lateral entry, trapezoidal crimp

Feed-through terminal block - PT 1,5/S

3208100

<https://www.phoenixcontact.com/de/produkte/3208100>

Crimping pliers

Crimping pliers - CRIMPFOX 6-M - 1212720

<https://www.phoenixcontact.com/de/produkte/1212720>



Crimping pliers, for ferrules without insulating collar according to DIN 46228 Part 1 and ferrules with insulating collar according to DIN 46228 Part 4, 0.25 mm² ... 6.0 mm², lateral entry, trapezoidal crimp

Crimping pliers

Crimping pliers - CRIMPFOX 6 - 1212034

<https://www.phoenixcontact.com/de/produkte/1212034>



Crimping pliers, for ferrules without insulating collar according to DIN 46228 Part 1 and ferrules with insulating collar according to DIN 46228 Part 4, 0.25 mm² ... 6.0 mm², lateral entry, trapezoidal crimp

Feed-through terminal block - PT 1,5/S

3208100

<https://www.phoenixcontact.com/de/produkte/3208100>

Crimping pliers

Crimping pliers - CRIMPFOX 6T - 1212037

<https://www.phoenixcontact.com/de/produkte/1212037>



Crimping pliers, for ferrules without insulating collar according to DIN 46228 Part 1 and ferrules with insulating collar according to DIN 46228 Part 4, 0.25 mm² ... 6 mm², lateral entry, trapezoidal crimp

Crimping pliers

Crimping pliers - CRIMPFOX 6T-F - 1212038

<https://www.phoenixcontact.com/de/produkte/1212038>



Crimping pliers, for ferrules without insulating collar according to DIN 46228 Part 1 and ferrules with insulating collar according to DIN 46228 Part 4, 0.25 mm² ... 6 mm², front entry, trapezoidal crimp

Feed-through terminal block - PT 1,5/S

3208100

<https://www.phoenixcontact.com/de/produkte/3208100>

Crimping pliers

Crimping pliers - CRIMPFOX 6S-F - 1212043

<https://www.phoenixcontact.com/de/produkte/1212043>



Crimping pliers, for ferrules without insulating collar according to DIN 46228 Part 1 and ferrules with insulating collar according to DIN 46228 Part 4, 0.5 mm² ... 6 mm², front entry, square crimp

Crimping pliers

Crimping pliers - CRIMPFOX-M - 1212072

<https://www.phoenixcontact.com/de/produkte/1212072>



Basic pliers, for accommodating dies for a wide range of type of contacts

Phoenix Contact 2022 © - all rights reserved
<https://www.phoenixcontact.com>

PHOENIX CONTACT Deutschland GmbH
Flachsmarktstraße 8
D-32825 Blomberg
+49 52 35/3-1 20 00
info@phoenixcontact.de