

# COMBI receptacle - PPC 2,5/10

3000664

<https://www.phoenixcontact.com/pc/products/3000664>



Please be informed that the data shown in this PDF document is generated from our Online Catalog. Please find the complete data in the user documentation. Our General Terms of Use for Downloads are valid.

---



COMBI receptacle, nom. voltage: 500 V, nominal current: 24 A, connection method: Push-in connection, 1 level, Rated cross section: 2.5 mm<sup>2</sup>, cross section: 0.14 mm<sup>2</sup> - 4 mm<sup>2</sup>, color: gray

---

## Your advantages

- The Push-in technology COMBI couplings for self-assembly provide solutions that users can implement themselves
- For secure and space-saving accommodation of plug-in contacts in cable ducts and distributor shafts

# COMBI receptacle - PPC 2,5/10

3000664

<https://www.phoenixcontact.com/pc/products/3000664>



## Commercial Data

Item number	3000664
Packing unit	25 pc
Minimum order quantity	25 pc
Product Key	BE2245
Catalog Page	Page 295 (C-1-2019)
GTIN	4046356676793
Weight per Piece (including packing)	35.35 g
Weight per Piece (excluding packing)	35.35 g
Customs tariff number	85366990
Country of origin	PL

# COMBI receptacle - PPC 2,5/10



3000664

<https://www.phoenixcontact.com/pc/products/3000664>

## Technical Data

### Product properties

Product type	Terminal coupling
Number of positions	10
Pitch	5.2 mm
Number of connections	10
Number of rows	1
Potentials	1

### Insulation characteristics

Overvoltage category	III
Degree of pollution	3

### Electrical properties

Rated surge voltage	6 kV
Maximum power dissipation for nominal condition	0.77 W

### Connection data

Nominal cross section	2.5 mm <sup>2</sup>
-----------------------	---------------------

#### 1 level

Stripping length	8 mm ... 10 mm
Internal cylindrical gage	A3
	B3
Conductor cross section solid	0.14 mm <sup>2</sup> ... 4 mm <sup>2</sup>
Cross section AWG	26 ... 12
Conductor cross section flexible	0.14 mm <sup>2</sup> ... 2.5 mm <sup>2</sup>
Conductor cross section, flexible [AWG]	26 ... 14
Flexible conductor cross section flexible (ferrule, w/o plastic sleeve)	0.14 mm <sup>2</sup> ... 2.5 mm <sup>2</sup>
Flexible conductor cross section (ferrule with plastic sleeve)	0.14 mm <sup>2</sup> ... 2.5 mm <sup>2</sup>
2 conductors with the same cross section, flexible, with TWIN ferrule with plastic sleeve	0.5 mm <sup>2</sup>
Nominal current	24 A
Maximum load current	24 A (with a 2.5 mm <sup>2</sup> conductor cross section)
Nominal voltage	500 V
Nominal cross section	2.5 mm <sup>2</sup>

#### 1 level Connection cross sections directly pluggable

Conductor cross section solid	0.34 mm <sup>2</sup> ... 4 mm <sup>2</sup>
Flexible conductor cross section flexible (ferrule, w/o plastic sleeve)	0.34 mm <sup>2</sup> ... 2.5 mm <sup>2</sup>
Flexible conductor cross section (ferrule with plastic sleeve)	0.5 mm <sup>2</sup> ... 2.5 mm <sup>2</sup>

## Dimensions

# COMBI receptacle - PPC 2,5/10



3000664

<https://www.phoenixcontact.com/pc/products/3000664>

Width	51.5 mm
Height	41 mm
Length	20.5 mm
Pitch	5.2 mm

## Material specifications

Color	gray
Flammability rating according to UL 94	V0
Insulating material group	I
Insulating material	PA
Static insulating material application in cold	-60 °C
Temperature index of insulation material (DIN EN 60216-1 (VDE 0304-21))	125 °C
Relative insulation material temperature index (Elec., UL 746 B)	130 °C
Fire protection for rail vehicles (DIN EN 45545-2) R22	HL 1 - HL 3
Fire protection for rail vehicles (DIN EN 45545-2) R23	HL 1 - HL 3
Fire protection for rail vehicles (DIN EN 45545-2) R24	HL 1 - HL 3
Fire protection for rail vehicles (DIN EN 45545-2) R26	HL 1 - HL 3
Calorimetric heat release NFPA 130 (ASTM E 1354)	27,5 MJ/kg
Surface flammability NFPA 130 (ASTM E 162)	passed
Specific optical density of smoke NFPA 130 (ASTM E 662)	passed
Smoke gas toxicity NFPA 130 (SMP 800C)	passed

## Electrical tests

### Surge voltage test

Test voltage setpoint	7.3 kV
Result	Test passed
Short-time withstand current 2.5 mm <sup>2</sup>	0.3 kA
Result	Test passed

### Power-frequency withstand voltage

Test voltage setpoint	1.89 kV
Result	Test passed

## Mechanical properties

### Mechanical data

Open side panel	Yes
-----------------	-----

## Environmental and real-life conditions

### Needle-flame test

Time of exposure	30 s
Result	Test passed

### Oscillation/broadband noise

# COMBI receptacle - PPC 2,5/10



3000664

<https://www.phoenixcontact.com/pc/products/3000664>

Specification	DIN EN 50155 (VDE 0115-200):2008-03
Spectrum	Service life test category 1, class B, body mounted
Frequency	$f_1 = 5 \text{ Hz}$ to $f_2 = 150 \text{ Hz}$
ASD level	$0.964 \text{ (m/s}^2\text{)}^2\text{/Hz}$
Acceleration	0.58g
Test duration per axis	5 h
Test directions	X-, Y- and Z-axis
Result	Test passed

## Shocks

Specification	DIN EN 50155 (VDE 0115-200):2008-03
Pulse shape	Half-sine
Acceleration	5g
Shock duration	30 ms
Number of shocks per direction	3
Test directions	X-, Y- and Z-axis (pos. and neg.)
Result	Test passed

## Ambient conditions

Ambient temperature (operation)	-60 °C ... 105 °C (max. short-term operating temperature RTI Elec.)
Ambient temperature (storage/transport)	-25 °C ... 60 °C (for a short time, not exceeding 24 h, -60 °C to +70 °C)
Ambient temperature (assembly)	-5 °C ... 70 °C
Ambient temperature (actuation)	-5 °C ... 70 °C
Permissible humidity (storage/transport)	30 % ... 70 %

## Standards and regulations

Connection in acc. with standard	IEC 61984
----------------------------------	-----------

# COMBI receptacle - PPC 2,5/10

3000664

<https://www.phoenixcontact.com/pc/products/3000664>



## Drawings

### Circuit diagram




# COMBI receptacle - PPC 2,5/10





3000664

<https://www.phoenixcontact.com/pc/products/3000664>

## Approvals

 <b>CSA</b> Approval ID: 13631				
	Nominal Voltage $U_N$	Nominal Current $I_N$	Cross Section AWG	Cross Section $\text{mm}^2$
Use group B				
	300 V	20 A	26 - 12	-
Use group C				
	300 V	20 A	26 - 12	-

 <b>EAC</b> Approval ID: RU C-DE.BL08.B.00511				
---	--	--	--	--

 <b>cULus Recognized</b> Approval ID: E60425				
	Nominal Voltage $U_N$	Nominal Current $I_N$	Cross Section AWG	Cross Section $\text{mm}^2$
Use group B				
	300 V	20 A	26 - 12	-
Use group C				
	300 V	20 A	26 - 12	-

# COMBI receptacle - PPC 2,5/10



3000664

<https://www.phoenixcontact.com/pc/products/3000664>

## Classifications

### ECLASS

ECLASS-9.0	27141151
ECLASS-10.0.1	27141151
ECLASS-11.0	27141151

### ETIM

ETIM 8.0	EC002021
----------	----------

### UNSPSC

UNSPSC 21.0	39121400
-------------	----------



# COMBI receptacle - PPC 2,5/10

3000664

<https://www.phoenixcontact.com/pc/products/3000664>



## Environmental Product Compliance

China RoHS	Environmentally friendly use period: unlimited = EFUP-e
	No hazardous substances above threshold values

# COMBI receptacle - PPC 2,5/10

3000664

<https://www.phoenixcontact.com/pc/products/3000664>



## Accessories

### Actuation tool

Actuation tool - ST-BW - 1207608

<https://www.phoenixcontact.com/pc/products/1207608>



Actuation tool, for all 2.5 mm<sup>2</sup> - 4.0 mm<sup>2</sup> spring-cages

---

### Screwdriver

Screwdriver - SZF 0-0,4X2,5 - 1204504

<https://www.phoenixcontact.com/pc/products/1204504>



Actuation tool, for ST terminal blocks, also suitable for use as a bladed screwdriver, size: 0.4 x 2.5 x 75 mm, 2-component grip, with non-slip grip

# COMBI receptacle - PPC 2,5/10

3000664

<https://www.phoenixcontact.com/pc/products/3000664>



## Zack Marker strip, flat

Zack Marker strip, flat - ZBF 5:UNBEDRUCKT - 0808642

<https://www.phoenixcontact.com/pc/products/0808642>



Zack Marker strip, flat, Strip, white, unlabeled, can be labeled with: PLOTMARK, CMS-P1-PLOTTER, mounting type: snap in, for terminal block width: 5 mm, lettering field size: 5.1 x 5.2 mm, Number of individual labels: 10

---

## Zack Marker strip, flat

Zack Marker strip, flat - ZBF 5 CUS - 0825025

<https://www.phoenixcontact.com/pc/products/0825025>



Zack Marker strip, flat, can be ordered: Strip, white, labeled according to customer specifications, mounting type: snap into flat marker groove, for terminal block width: 5 mm, lettering field size: 5.15 x 5.15 mm, Number of individual labels: 10

# COMBI receptacle - PPC 2,5/10

3000664

<https://www.phoenixcontact.com/pc/products/3000664>

## Zack Marker strip, flat

Zack Marker strip, flat - ZBF 5,LGS:FORTL.ZAHLEN - 0808671

<https://www.phoenixcontact.com/pc/products/0808671>



Zack Marker strip, flat, Strip, white, labeled, printed horizontally: consecutive numbers 1 ... 10, 11 ... 20, etc. up to 491 ... 500, mounting type: snap into flat marker groove, for terminal block width: 5 mm, lettering field size: 5.15 x 5.15 mm, Number of individual labels: 10

---

## Zack Marker strip, flat

Zack Marker strip, flat - ZBF 5,QR:FORTL.ZAHLEN - 0808697

<https://www.phoenixcontact.com/pc/products/0808697>



Zack Marker strip, flat, Strip, white, labeled, Printed vertically: consecutive numbers 1 ... 10, 11 ... 20, etc. up to 91 ... 100, mounting type: snap into flat marker groove, for terminal block width: 5 mm, lettering field size: 5.15 x 5.15 mm, Number of individual labels: 10

# COMBI receptacle - PPC 2,5/10

3000664

<https://www.phoenixcontact.com/pc/products/3000664>

## Zack Marker strip, flat

Zack Marker strip, flat - ZBF 5,LGS:GERADE ZAHLEN - 0810821

<https://www.phoenixcontact.com/pc/products/0810821>



Zack Marker strip, flat, Strip, white, labeled, printed horizontally: consecutive even numbers 2 ... 20, 22 ... 40, etc. up to 82 ... 100, mounting type: snap into flat marker groove, for terminal block width: 5 mm, lettering field size: 5.15 x 5.15 mm, Number of individual labels: 10

---

## Zack Marker strip, flat

Zack Marker strip, flat - ZBF 5,LGS:UNGERADE ZAHLEN - 0810863

<https://www.phoenixcontact.com/pc/products/0810863>



Zack Marker strip, flat, Strip, white, labeled, printed horizontally: Odd numbers 1 - 19, 21 - 39, etc. up to 81 - 99, mounting type: snap into flat marker groove, for terminal block width: 5 mm, lettering field size: 5.15 x 5.15 mm, Number of individual labels: 10

# COMBI receptacle - PPC 2,5/10

3000664

<https://www.phoenixcontact.com/pc/products/3000664>



## Insulating sleeve

Insulating sleeve - MPS-IH WH - 0201663

<https://www.phoenixcontact.com/pc/products/0201663>

Insulating sleeve, color: white



---

## Insulating sleeve

Insulating sleeve - MPS-IH RD - 0201676

<https://www.phoenixcontact.com/pc/products/0201676>

Insulating sleeve, color: red



# COMBI receptacle - PPC 2,5/10

3000664

<https://www.phoenixcontact.com/pc/products/3000664>

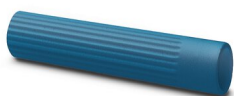


## Insulating sleeve

Insulating sleeve - MPS-IH BU - 0201689

<https://www.phoenixcontact.com/pc/products/0201689>

Insulating sleeve, color: blue



---

## Insulating sleeve

Insulating sleeve - MPS-IH YE - 0201692

<https://www.phoenixcontact.com/pc/products/0201692>

Insulating sleeve, color: yellow



# COMBI receptacle - PPC 2,5/10

3000664

<https://www.phoenixcontact.com/pc/products/3000664>



## Insulating sleeve

Insulating sleeve - MPS-IH GN - 0201702

<https://www.phoenixcontact.com/pc/products/0201702>

Insulating sleeve, color: green



---

## Insulating sleeve

Insulating sleeve - MPS-IH GY - 0201728

<https://www.phoenixcontact.com/pc/products/0201728>

Insulating sleeve, color: gray





# COMBI receptacle - PPC 2,5/10

3000664

<https://www.phoenixcontact.com/pc/products/3000664>



## Insulating sleeve

Insulating sleeve - MPS-IH BK - 0201731

<https://www.phoenixcontact.com/pc/products/0201731>

Insulating sleeve, color: black



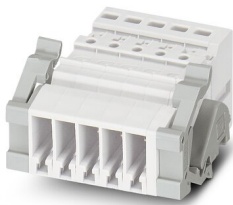
---

## Panel feed-through

Panel feed-through - SSL 2,5 - 3043815

<https://www.phoenixcontact.com/pc/products/3043815>

Panel feed-through, width: 5.2 mm, color: gray



# COMBI receptacle - PPC 2,5/10

3000664

<https://www.phoenixcontact.com/pc/products/3000664>



## Panel feed-through

Panel feed-through - SSL 2,5 - 3043815

<https://www.phoenixcontact.com/pc/products/3043815>

Panel feed-through, width: 5.2 mm, color: gray



---

## Plug

Plug - PP-H 2,5/ 1 - 3209866

<https://www.phoenixcontact.com/pc/products/3209866>

Plug, nom. voltage: 500 V, nominal current: 24 A, connection method: Push-in connection, 1 level, Rated cross section: 2.5 mm<sup>2</sup>, cross section: 0.14 mm<sup>2</sup> - 4 mm<sup>2</sup>, mounting type: Plug-in mounting, color: gray



# COMBI receptacle - PPC 2,5/10

3000664

<https://www.phoenixcontact.com/pc/products/3000664>

## Plug

Plug - PP-H 2,5/ 1 BU - 3210017

<https://www.phoenixcontact.com/pc/products/3210017>



Plug, nom. voltage: 500 V, nominal current: 24 A, connection method: Push-in connection, 1 level, Rated cross section: 2.5 mm<sup>2</sup>, cross section: 0.14 mm<sup>2</sup> - 4 mm<sup>2</sup>, mounting type: Plug-in mounting, color: blue

---

## Plug

Plug - PP-H 2,5/ 1 GNYE - 3210020

<https://www.phoenixcontact.com/pc/products/3210020>



Plug, nom. voltage: 500 V, nominal current: 24 A, connection method: Push-in connection, 1 level, Rated cross section: 2.5 mm<sup>2</sup>, cross section: 0.14 mm<sup>2</sup> - 4 mm<sup>2</sup>, color: green-yellow

# COMBI receptacle - PPC 2,5/10

3000664

<https://www.phoenixcontact.com/pc/products/3000664>

## Plug

Plug - PP-H 2,5/ 2 - 3209879

<https://www.phoenixcontact.com/pc/products/3209879>



Plug, nom. voltage: 500 V, nominal current: 24 A, connection method: Push-in connection, 1 level, Rated cross section: 2.5 mm<sup>2</sup>, cross section: 0.14 mm<sup>2</sup> - 4 mm<sup>2</sup>, mounting type: Plug-in mounting, color: gray

---

## Plug

Plug - PP-H 2,5/ 3 - 3209882

<https://www.phoenixcontact.com/pc/products/3209882>



Plug, nom. voltage: 500 V, nominal current: 24 A, connection method: Push-in connection, 1 level, Rated cross section: 2.5 mm<sup>2</sup>, cross section: 0.14 mm<sup>2</sup> - 4 mm<sup>2</sup>, color: gray

# COMBI receptacle - PPC 2,5/10

3000664

<https://www.phoenixcontact.com/pc/products/3000664>

## Plug

Plug - PP-H 2,5/ 3 (1GNYE/2GY) - 3209883

<https://www.phoenixcontact.com/pc/products/3209883>



Plug, nom. voltage: 500 V, nominal current: 24 A, connection method: Push-in connection, 1 level, Rated cross section: 2.5 mm<sup>2</sup>, cross section: 0.14 mm<sup>2</sup> - 4 mm<sup>2</sup>, color: gray

---

## Plug

Plug - PP-H 2,5/ 4 - 3209895

<https://www.phoenixcontact.com/pc/products/3209895>



Plug, nom. voltage: 500 V, nominal current: 24 A, connection method: Push-in connection, 1 level, Rated cross section: 2.5 mm<sup>2</sup>, cross section: 0.14 mm<sup>2</sup> - 4 mm<sup>2</sup>, color: gray

# COMBI receptacle - PPC 2,5/10

3000664

<https://www.phoenixcontact.com/pc/products/3000664>

## Plug

Plug - PP-H 2,5/ 4 (1GNYE/3GY) - 3209896

<https://www.phoenixcontact.com/pc/products/3209896>



Plug, nom. voltage: 500 V, nominal current: 24 A, connection method: Push-in connection, 1 level, Rated cross section: 2.5 mm<sup>2</sup>, cross section: 0.14 mm<sup>2</sup> - 4 mm<sup>2</sup>, mounting type: Plug-in mounting, color: gray

---

## Plug

Plug - PP-H 2,5/ 5 - 3209905

<https://www.phoenixcontact.com/pc/products/3209905>



Plug, nom. voltage: 500 V, nominal current: 24 A, connection method: Push-in connection, 1 level, Rated cross section: 2.5 mm<sup>2</sup>, cross section: 0.14 mm<sup>2</sup> - 4 mm<sup>2</sup>, mounting type: Plug-in mounting, color: gray

# COMBI receptacle - PPC 2,5/10

3000664

<https://www.phoenixcontact.com/pc/products/3000664>

## Plug

Plug - PP-H 2,5/ 6 - 3209918

<https://www.phoenixcontact.com/pc/products/3209918>



Plug, nom. voltage: 500 V, nominal current: 24 A, connection method: Push-in connection, 1 level, Rated cross section: 2.5 mm<sup>2</sup>, cross section: 0.14 mm<sup>2</sup> - 4 mm<sup>2</sup>, mounting type: Plug-in mounting, color: gray

---

## Plug

Plug - PP-H 2,5/ 7 - 3209921

<https://www.phoenixcontact.com/pc/products/3209921>



Plug, nom. voltage: 500 V, nominal current: 24 A, connection method: Push-in connection, 1 level, Rated cross section: 2.5 mm<sup>2</sup>, cross section: 0.14 mm<sup>2</sup> - 4 mm<sup>2</sup>, color: gray

# COMBI receptacle - PPC 2,5/10

3000664

<https://www.phoenixcontact.com/pc/products/3000664>

## Plug

Plug - PP-H 2,5/ 7 (1GNYE/6GY) - 3209922

<https://www.phoenixcontact.com/pc/products/3209922>



Plug, nom. voltage: 500 V, nominal current: 24 A, connection method: Push-in connection, 1 level, Rated cross section: 2.5 mm<sup>2</sup>, cross section: 0.14 mm<sup>2</sup> - 4 mm<sup>2</sup>, color: gray

---

## Plug

Plug - PP-H 2,5/ 8 - 3209934

<https://www.phoenixcontact.com/pc/products/3209934>



Plug, nom. voltage: 500 V, nominal current: 24 A, connection method: Push-in connection, 1 level, Rated cross section: 2.5 mm<sup>2</sup>, cross section: 0.14 mm<sup>2</sup> - 4 mm<sup>2</sup>, mounting type: Plug-in mounting, color: gray



# COMBI receptacle - PPC 2,5/10

3000664

<https://www.phoenixcontact.com/pc/products/3000664>



## Plug

Plug - PP-H 2,5/ 9 - 3209947

<https://www.phoenixcontact.com/pc/products/3209947>



Plug, nom. voltage: 500 V, nominal current: 24 A, connection method: Push-in connection, 1 level, Rated cross section: 2.5 mm<sup>2</sup>, cross section: 0.14 mm<sup>2</sup> - 4 mm<sup>2</sup>, color: gray

---

## Plug

Plug - PP-H 2,5/1-L - 3210062

<https://www.phoenixcontact.com/pc/products/3210062>



Plug, nom. voltage: 500 V, nominal current: 24 A, connection method: Push-in connection, 1 level, Rated cross section: 2.5 mm<sup>2</sup>, cross section: 0.14 mm<sup>2</sup> - 4 mm<sup>2</sup>, color: gray

# COMBI receptacle - PPC 2,5/10

3000664

<https://www.phoenixcontact.com/pc/products/3000664>

## Plug

Plug - PP-H 2,5/1-L BU - 3210075

<https://www.phoenixcontact.com/pc/products/3210075>



Plug, nom. voltage: 500 V, nominal current: 24 A, connection method: Push-in connection, 1 level, Rated cross section: 2.5 mm<sup>2</sup>, cross section: 0.14 mm<sup>2</sup> - 4 mm<sup>2</sup>, color: blue

---

## Plug

Plug - PP-H 2,5/1-L GNYE - 3210088

<https://www.phoenixcontact.com/pc/products/3210088>



Plug, nom. voltage: 500 V, nominal current: 24 A, connection method: Push-in connection, 1 level, Rated cross section: 2.5 mm<sup>2</sup>, cross section: 0.14 mm<sup>2</sup> - 4 mm<sup>2</sup>, color: green-yellow

# COMBI receptacle - PPC 2,5/10

3000664

<https://www.phoenixcontact.com/pc/products/3000664>

## Plug

Plug - PP-H 2,5/1-L OG - 3061923

<https://www.phoenixcontact.com/pc/products/3061923>



Plug, nom. voltage: 500 V, nominal current: 24 A, connection method: Push-in connection, 1 level, Rated cross section: 2.5 mm<sup>2</sup>, cross section: 0.14 mm<sup>2</sup> - 4 mm<sup>2</sup>, color: orange

---

## Plug

Plug - PP-H 2,5/1-M - 3210091

<https://www.phoenixcontact.com/pc/products/3210091>



Plug, nom. voltage: 500 V, nominal current: 24 A, connection method: Push-in connection, 1 level, Rated cross section: 2.5 mm<sup>2</sup>, cross section: 0.14 mm<sup>2</sup> - 4 mm<sup>2</sup>, color: gray

# COMBI receptacle - PPC 2,5/10

3000664

<https://www.phoenixcontact.com/pc/products/3000664>

## Plug

Plug - PP-H 2,5/1-M BU - 3210101

<https://www.phoenixcontact.com/pc/products/3210101>



Plug, nom. voltage: 500 V, nominal current: 24 A, connection method: Push-in connection, 1 level, Rated cross section: 2.5 mm<sup>2</sup>, cross section: 0.14 mm<sup>2</sup> - 4 mm<sup>2</sup>, color: blue

---

## Plug

Plug - PP-H 2,5/1-M GNYE - 3210114

<https://www.phoenixcontact.com/pc/products/3210114>



Plug, nom. voltage: 500 V, nominal current: 24 A, connection method: Push-in connection, 1 level, Rated cross section: 2.5 mm<sup>2</sup>, cross section: 0.14 mm<sup>2</sup> - 4 mm<sup>2</sup>, color: green-yellow

# COMBI receptacle - PPC 2,5/10

3000664

<https://www.phoenixcontact.com/pc/products/3000664>

## Plug

Plug - PP-H 2,5/1-M OG - 3061936

<https://www.phoenixcontact.com/pc/products/3061936>



Plug, nom. voltage: 500 V, nominal current: 24 A, connection method: Push-in connection, 1 level, Rated cross section: 2.5 mm<sup>2</sup>, cross section: 0.14 mm<sup>2</sup> - 4 mm<sup>2</sup>, color: orange

---

## Plug

Plug - PP-H 2,5/1-R - 3210127

<https://www.phoenixcontact.com/pc/products/3210127>



Plug, nom. voltage: 500 V, nominal current: 24 A, connection method: Push-in connection, 1 level, Rated cross section: 2.5 mm<sup>2</sup>, cross section: 0.14 mm<sup>2</sup> - 4 mm<sup>2</sup>, color: gray

# COMBI receptacle - PPC 2,5/10

3000664

<https://www.phoenixcontact.com/pc/products/3000664>

## Plug

Plug - PP-H 2,5/1-R BU - 3210130

<https://www.phoenixcontact.com/pc/products/3210130>



Plug, nom. voltage: 500 V, nominal current: 24 A, connection method: Push-in connection, 1 level, Rated cross section: 2.5 mm<sup>2</sup>, cross section: 0.14 mm<sup>2</sup> - 4 mm<sup>2</sup>, color: blue

---

## Plug

Plug - PP-H 2,5/1-R GNYE - 3210143

<https://www.phoenixcontact.com/pc/products/3210143>



Plug, nom. voltage: 500 V, nominal current: 24 A, connection method: Push-in connection, 1 level, Rated cross section: 2.5 mm<sup>2</sup>, cross section: 0.14 mm<sup>2</sup> - 4 mm<sup>2</sup>, color: green-yellow

# COMBI receptacle - PPC 2,5/10

3000664

<https://www.phoenixcontact.com/pc/products/3000664>

## Plug

Plug - PP-H 2,5/1-R OG - 3061949

<https://www.phoenixcontact.com/pc/products/3061949>



Plug, nom. voltage: 500 V, nominal current: 24 A, connection method: Push-in connection, 1 level, Rated cross section: 2.5 mm<sup>2</sup>, cross section: 0.14 mm<sup>2</sup> - 4 mm<sup>2</sup>, color: orange

---

## Plug

Plug - PP-H 2,5/10 - 3209950

<https://www.phoenixcontact.com/pc/products/3209950>



Plug, nom. voltage: 500 V, nominal current: 24 A, connection method: Push-in connection, 1 level, Rated cross section: 2.5 mm<sup>2</sup>, cross section: 0.14 mm<sup>2</sup> - 4 mm<sup>2</sup>, color: gray

# COMBI receptacle - PPC 2,5/10

3000664

<https://www.phoenixcontact.com/pc/products/3000664>

## Plug

Plug - PP-H 2,5/11 - 3209963

<https://www.phoenixcontact.com/pc/products/3209963>



Plug, nom. voltage: 500 V, nominal current: 24 A, connection method: Push-in connection, 1 level, Rated cross section: 2.5 mm<sup>2</sup>, cross section: 0.14 mm<sup>2</sup> - 4 mm<sup>2</sup>, color: gray

---

## Plug

Plug - PP-H 2,5/12 - 3209976

<https://www.phoenixcontact.com/pc/products/3209976>



Plug, nom. voltage: 500 V, nominal current: 24 A, connection method: Push-in connection, 1 level, Rated cross section: 2.5 mm<sup>2</sup>, cross section: 0.14 mm<sup>2</sup> - 4 mm<sup>2</sup>, color: gray



# COMBI receptacle - PPC 2,5/10

3000664

<https://www.phoenixcontact.com/pc/products/3000664>

## Plug

Plug - PP-H 2,5/12 (1GNYE/11GY) - 3209977

<https://www.phoenixcontact.com/pc/products/3209977>



Plug, nom. voltage: 500 V, nominal current: 24 A, connection method: Push-in connection, 1 level, Rated cross section: 2.5 mm<sup>2</sup>, cross section: 0.14 mm<sup>2</sup> - 4 mm<sup>2</sup>, color: gray

---

## Plug

Plug - PP-H 2,5/13 - 3209989

<https://www.phoenixcontact.com/pc/products/3209989>



Plug, nom. voltage: 500 V, nominal current: 24 A, connection method: Push-in connection, 1 level, Rated cross section: 2.5 mm<sup>2</sup>, cross section: 0.14 mm<sup>2</sup> - 4 mm<sup>2</sup>, color: gray

# COMBI receptacle - PPC 2,5/10

3000664

<https://www.phoenixcontact.com/pc/products/3000664>

## Plug

Plug - PP-H 2,5/14 - 3209992

<https://www.phoenixcontact.com/pc/products/3209992>



Plug, nom. voltage: 500 V, nominal current: 24 A, connection method: Push-in connection, 1 level, Rated cross section: 2.5 mm<sup>2</sup>, cross section: 0.14 mm<sup>2</sup> - 4 mm<sup>2</sup>, color: gray

---

## Plug

Plug - PP-H 2,5/15 - 3210004

<https://www.phoenixcontact.com/pc/products/3210004>



Plug, nom. voltage: 500 V, nominal current: 24 A, connection method: Push-in connection, 1 level, Rated cross section: 2.5 mm<sup>2</sup>, cross section: 0.14 mm<sup>2</sup> - 4 mm<sup>2</sup>, color: gray

# COMBI receptacle - PPC 2,5/10

3000664

<https://www.phoenixcontact.com/pc/products/3000664>

## Plug

Plug - PP-H 2,5/20 - 3061884

<https://www.phoenixcontact.com/pc/products/3061884>



Plug, nom. voltage: 500 V, nominal current: 24 A, connection method: Push-in connection, 1 level, Rated cross section: 2.5 mm<sup>2</sup>, cross section: 0.14 mm<sup>2</sup> - 4 mm<sup>2</sup>, color: gray

---

## Plug

Plug - PP-H 2,5/24 - 3061897

<https://www.phoenixcontact.com/pc/products/3061897>



Plug, nom. voltage: 500 V, nominal current: 24 A, connection method: Push-in connection, 1 level, Rated cross section: 2.5 mm<sup>2</sup>, cross section: 0.14 mm<sup>2</sup> - 4 mm<sup>2</sup>, color: gray

# COMBI receptacle - PPC 2,5/10

3000664

<https://www.phoenixcontact.com/pc/products/3000664>

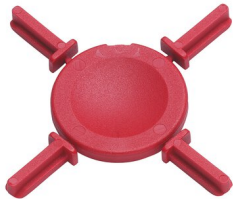


## Coding star

Coding star - PC - 3040588

<https://www.phoenixcontact.com/pc/products/3040588>

Coding star, length: 3 mm, width: 3 mm, height: 6 mm, color: red



---

## Test plugs

Test plugs - MPS-MT - 0201744

<https://www.phoenixcontact.com/pc/products/0201744>

Test plugs, with solder connection up to 1 mm<sup>2</sup> conductor cross section, color: gray



# COMBI receptacle - PPC 2,5/10

3000664

<https://www.phoenixcontact.com/pc/products/3000664>



## Marker for terminal blocks

Marker for terminal blocks - UC-TMF 5 - 0818153

<https://www.phoenixcontact.com/pc/products/0818153>



Marker for terminal blocks, Sheet, white, unlabeled, can be labeled with: BLUEMARK ID COLOR, BLUEMARK ID, BLUEMARK CLED, PLOTMARK, CMS-P1-PLOTTER, mounting type: snap in, for terminal block width: 5.2 mm, lettering field size: 4.6 x 5.1 mm, Number of individual labels: 96

---

## Marker for terminal blocks

Marker for terminal blocks - UC-TMF 5 CUS - 0824638

<https://www.phoenixcontact.com/pc/products/0824638>



Marker for terminal blocks, can be ordered: by sheet, white, labeled according to customer specifications, mounting type: snap into flat marker groove, for terminal block width: 5.2 mm, lettering field size: 4.6 x 5.1 mm, Number of individual labels: 96

# COMBI receptacle - PPC 2,5/10

3000664

<https://www.phoenixcontact.com/pc/products/3000664>



## Marker for terminal blocks

Marker for terminal blocks - UCT-TMF 5 - 0828744

<https://www.phoenixcontact.com/pc/products/0828744>



Marker for terminal blocks, Sheet, white, unlabeled, can be labeled with: TOPMARK NEO, TOPMARK LASER, BLUEMARK ID COLOR, BLUEMARK ID, BLUEMARK CLED, THERMOMARK PRIME, THERMOMARK CARD 2.0, THERMOMARK CARD, mounting type: snap in, for terminal block width: 5.2 mm, lettering field size: 4.4 x 4.7 mm, Number of individual labels: 72

---

## Marker for terminal blocks

Marker for terminal blocks - UCT-TMF 5 CUS - 0829658

<https://www.phoenixcontact.com/pc/products/0829658>



Marker for terminal blocks, can be ordered: by sheet, white, labeled according to customer specifications, mounting type: snap into flat marker groove, for terminal block width: 5.2 mm, lettering field size: 4.4 x 4.7 mm, Number of individual labels: 72

---

Phoenix Contact 2022 © - all rights reserved  
<https://www.phoenixcontact.com>

PHOENIX CONTACT GmbH & Co. KG  
Flachsmarktstraße 8  
D-32825 Blomberg  
+49 (0) 5235-3 00  
[info@phoenixcontact.com](mailto:info@phoenixcontact.com)