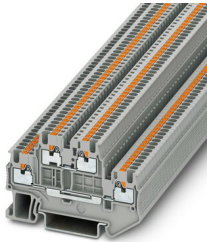


# Double-level terminal block - PTTB 1,5/S

3208511

<https://www.phoenixcontact.com/de/produkte/3208511>

Please be informed that the data shown in this PDF document is generated from our Online Catalog. Please find the complete data in the user documentation. Our General Terms of Use for Downloads are valid.



Double-level terminal block, nom. voltage: 500 V, nominal current: 16 A, connection method: Push-in connection, 1st and 2nd level, Rated cross section: 1.5 mm<sup>2</sup>, cross section: 0.14 mm<sup>2</sup> - 1.5 mm<sup>2</sup>, mounting type: NS 35/7,5, NS 35/15, color: gray

## Your advantages

- The Push-in connection terminal blocks are characterized by the system features of the CLIPLINE complete system and by easy and tool-free wiring of conductors with ferrules or solid conductors
- The compact design and front connection enable wiring in a confined space
- In addition to the testing facility in the double function shaft, all terminal blocks provide an additional test connection
- Tested for railway applications

# Double-level terminal block - PTTB 1,5/S



3208511

<https://www.phoenixcontact.com/de/produkte/3208511>

## Commercial Data

|                                      |                    |
|--------------------------------------|--------------------|
| Item number                          | 3208511            |
| Packing unit                         | 50 pc              |
| Minimum order quantity               | 50 pc              |
| Sales Key                            | A1 - Reihenklennen |
| Product Key                          | BE2214             |
| Catalog Page                         | Page 39 (C-1-2019) |
| GTIN                                 | 4046356564540      |
| Weight per Piece (including packing) | 6,906 g            |
| Weight per Piece (excluding packing) | 6,906 g            |
| Customs tariff number                | 85369010           |
| Country of origin                    | DE                 |

# Double-level terminal block - PTTB 1,5/S



3208511

<https://www.phoenixcontact.com/de/produkte/3208511>

## Technical Data

### Product properties

|                       |                            |
|-----------------------|----------------------------|
| Product type          | Multi-level terminal block |
| Area of application   | Railway industry           |
|                       | Machine building           |
|                       | Plant engineering          |
| Number of connections | 4                          |
| Number of rows        | 2                          |
| Potentials            | 2                          |

### Insulation characteristics

|                      |     |
|----------------------|-----|
| Overvoltage category | III |
| Degree of pollution  | 3   |

### Electrical properties

|   |        |
|---|--------|
| Rated surge voltage                             | 6 kV   |
| Maximum power dissipation for nominal condition | 0.56 W |

### Connection data

|                                 |                     |
|---------------------------------|---------------------|
| Number of connections per level | 2                   |
| Nominal cross section           | 1.5 mm <sup>2</sup> |

### 1st and 2nd level

|   |  |
|---|--|
| Stripping length  | 8 mm ... 10 mm   |
| Internal cylindrical gage   | A1 / B1  |
| Conductor cross section solid   | 0.14 mm <sup>2</sup> ... 1.5 mm <sup>2</sup>   |
| Cross section AWG   | 26 ... 14  |
| Conductor cross section flexible  | 0.14 mm <sup>2</sup> ... 1.5 mm <sup>2</sup>   |
| Conductor cross section, flexible [AWG]                                 | 26 ... 14  |
| Flexible conductor cross section flexible (ferrule, w/o plastic sleeve) | 0.14 mm <sup>2</sup> ... 1.5 mm <sup>2</sup>   |
| Flexible conductor cross section (ferrule with plastic sleeve)          | 0.14 mm <sup>2</sup> ... 1 mm <sup>2</sup> Using the AI-S 1-8 TQ ferrule, Item No. 1200293, is recommended |
| Nominal current   | 16 A   |
| Maximum load current  | 16 A   |
| Nominal voltage   | 500 V  |
| Nominal cross section   | 1.5 mm <sup>2</sup>  |

### 1st and 2nd level Connection cross sections directly pluggable

|   |  |
|---|--|
| Conductor cross section solid   | 0.25 mm <sup>2</sup> ... 1.5 mm <sup>2</sup> |
| Flexible conductor cross section flexible (ferrule, w/o plastic sleeve) | 0.34 mm <sup>2</sup> ... 1.5 mm <sup>2</sup> |
| Flexible conductor cross section (ferrule with plastic sleeve)          | 0.34 mm <sup>2</sup> ... 1 mm <sup>2</sup>   |

### Ex data

# Double-level terminal block - PTTB 1,5/S



3208511

<https://www.phoenixcontact.com/de/produkte/3208511>

## Rated data (ATEX/IECEX)

|  |   |
|--|---|
| ATEX certificate   | SEV 13 ATEX 0159 U  |
| IEC Ex certificate   | IECEX SEV 13.0005 U   |
| Identification   | Ex eb IIC Gb  |
| Operating temperature range  | -60 °C ... 110 °C   |
| Ex-certified accessories   | 3208579 D-PTTB 1,5/S<br>3030747 ATP-STTB 4<br>1204504 SZF 0-0,4X2,5<br>3022276 CLIPFIX 35-5<br>3022218 CLIPFIX 35 |
| Bridge data  | 13.5 A / 1.5 mm <sup>2</sup>  |
| Ex temperature increase  | 40 K (14.5 A / 1.5 mm <sup>2</sup> )  |
| Rated voltage  | 320 V   |
| for bridging with bridge   | 352 V   |
| - At bridging between non-adjacent terminal blocks                       | 220 V   |
| - At bridging between non-adjacent terminal blocks via PE terminal block | 220 V   |
| - At cut-to-length bridging  | 166 V   |
| - At cut-to-length bridging with cover                                   | 275 V   |
| - At cut-to-length bridging with partition plate                         | 352 V   |
| Rated insulation voltage   | 320 V   |

## Ex level General

|                      |        |
|----------------------|--------|
| Rated current        | 14.5 A |
| Maximum load current | 14.5 A |

## Ex connection data General

|                              |  |
|------------------------------|--|
| Nominal cross section        | 1.5 mm <sup>2</sup>                          |
| Rated cross section AWG      | 16   |
| Connection capacity rigid    | 0.14 mm <sup>2</sup> ... 1.5 mm <sup>2</sup> |
| Connection capacity AWG      | 26 ... 16                                    |
| Connection capacity flexible | 0.14 mm <sup>2</sup> ... 1.5 mm <sup>2</sup> |
| Connection capacity AWG      | 26 ... 16                                    |

## Ex level Level 1

|                    |        |
|--------------------|--------|
| Contact resistance | 1.4 mΩ |
|--------------------|--------|

## Ex level Level 2

|                    |        |
|--------------------|--------|
| Contact resistance | 1.3 mΩ |
|--------------------|--------|

## Dimensions

|                  |         |
|------------------|---------|
| Width            | 3.5 mm  |
| End cover width  | 2.2 mm  |
| Height           | 41.1 mm |
| Height NS 35/15  | 50.1 mm |
| Height NS 35/7,5 | 42.6 mm |

# Double-level terminal block - PTTB 1,5/S



3208511

<https://www.phoenixcontact.com/de/produkte/3208511>

|        |         |
|--------|---------|
| Length | 65.4 mm |
|--------|---------|

## Material specifications

|   |             |
|---|-------------|
| Color   | gray        |
| Flammability rating according to UL 94                                  | V0          |
| Insulating material group   | I           |
| Insulating material   | PA          |
| Static insulating material application in cold                          | -60 °C      |
| Temperature index of insulation material (DIN EN 60216-1 (VDE 0304-21)) | 130 °C      |
| Relative insulation material temperature index (Elec., UL 746 B)        | 130 °C      |
| Fire protection for rail vehicles (DIN EN 45545-2) R22                  | HL 1 - HL 3 |
| Fire protection for rail vehicles (DIN EN 45545-2) R23                  | HL 1 - HL 3 |
| Fire protection for rail vehicles (DIN EN 45545-2) R24                  | HL 1 - HL 3 |
| Fire protection for rail vehicles (DIN EN 45545-2) R26                  | HL 1 - HL 3 |
| Calorimetric heat release NFPA 130 (ASTM E 1354)                        | 28 MJ/kg    |
| Surface flammability NFPA 130 (ASTM E 162)                              | passed      |
| Specific optical density of smoke NFPA 130 (ASTM E 662)                 | passed      |
| Smoke gas toxicity NFPA 130 (SMP 800C)                                  | passed      |

## Electrical tests

### Surge voltage test

|                       |             |
|-----------------------|-------------|
| Test voltage setpoint | 7.3 kV      |
| Result                | Test passed |

### Temperature-rise test

|  |                                     |
|--|-------------------------------------|
| Requirement temperature-rise test                | Increase in temperature $\leq$ 45 K |
| Result   | Test passed                         |
| Short-time withstand current 1.5 mm <sup>2</sup> | 0.18 kA                             |
| Result   | Test passed                         |

### Power-frequency withstand voltage

|                       |             |
|-----------------------|-------------|
| Test voltage setpoint | 1.89 kV     |
| Result                | Test passed |

## Mechanical properties

### Mechanical data

|                 |     |
|-----------------|-----|
| Open side panel | Yes |
|-----------------|-----|

## Mechanical tests

### Mechanical strength

|        |             |
|--------|-------------|
| Result | Test passed |
|--------|-------------|

### Attachment on the carrier

|                         |       |
|-------------------------|-------|
| DIN rail/fixing support | NS 35 |
|-------------------------|-------|

# Double-level terminal block - PTTB 1,5/S



3208511

<https://www.phoenixcontact.com/de/produkte/3208511>

|                     |             |
|---------------------|-------------|
| Test force setpoint | 1 N         |
| Result              | Test passed |

## Test for conductor damage and slackening

|                                |   |
|--------------------------------|---|
| Rotation speed                 | 10 rpm  |
| Revolutions                    | 135   |
| Conductor cross section/weight | 0.14 mm <sup>2</sup> / 0.2 kg<br>1.5 mm <sup>2</sup> / 0.4 kg |
| Result                         | Test passed   |

## Environmental and real-life conditions

### Aging

|        |             |
|--------|-------------|
| Result | Test passed |
|--------|-------------|

### Needle-flame test

|                  |             |
|------------------|-------------|
| Time of exposure | 30 s        |
| Result           | Test passed |

### Oscillation/broadband noise

|                        |  |
|------------------------|--|
| Specification          | DIN EN 50155 (VDE 0115-200):2008-03            |
| Spectrum               | Service life test category 2, bogie-mounted    |
| Frequency              | $f_1 = 5 \text{ Hz}$ to $f_2 = 250 \text{ Hz}$ |
| ASD level              | 6.12 (m/s <sup>2</sup> ) <sup>2</sup> /Hz      |
| Acceleration           | 3.12g  |
| Test duration per axis | 5 h  |
| Test directions        | X-, Y- and Z-axis                              |
| Result                 | Test passed                                    |

### Shocks

|                                |                                     |
|--------------------------------|-------------------------------------|
| Specification                  | DIN EN 50155 (VDE 0115-200):2008-03 |
| Pulse shape                    | Half-sine                           |
| Acceleration                   | 30g                                 |
| Shock duration                 | 18 ms                               |
| Number of shocks per direction | 3                                   |
| Test directions                | X-, Y- and Z-axis (pos. and neg.)   |
| Result                         | Test passed                         |

### Ambient conditions

|  |   |
|--|---|
| Ambient temperature (operation)          | -60 °C ... 105 °C (max. short-term operating temperature RTI Elec.)       |
| Ambient temperature (storage/transport)  | -25 °C ... 60 °C (for a short time, not exceeding 24 h, -60 °C to +70 °C) |
| Ambient temperature (assembly)           | -5 °C ... 70 °C   |
| Ambient temperature (actuation)          | -5 °C ... 70 °C   |
| Permissible humidity (storage/transport) | 30 % ... 70 %   |

## Standards and regulations

# Double-level terminal block - PTTB 1,5/S



3208511

<https://www.phoenixcontact.com/de/produkte/3208511>

|                                  |               |
|----------------------------------|---------------|
| Connection in acc. with standard | IEC 60947-7-1 |
|----------------------------------|---------------|

## Mounting

|               |           |
|---------------|-----------|
| Mounting type | NS 35/7,5 |
|               | NS 35/15  |

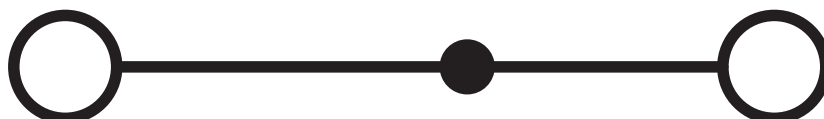
# Double-level terminal block - PTTB 1,5/S

3208511

<https://www.phoenixcontact.com/de/produkte/3208511>

## Drawings

Circuit diagram





# Double-level terminal block - PTTB 1,5/S



3208511

<https://www.phoenixcontact.com/de/produkte/3208511>

## Approvals

**DNV**

Approval ID: TAE00003JE



**CSA**

Approval ID: 13631

|             | Nominal Voltage $U_N$ | Nominal Current $I_N$ | Cross Section AWG | Cross Section $\text{mm}^2$ |
|-------------|-----------------------|-----------------------|-------------------|-----------------------------|
| Use group B | 300 V                 | 15 A                  | 26 - 14           | -                           |
| Use group C | 300 V                 | 15 A                  | 26 - 14           | -                           |
| Use group D | 600 V                 | 5 A                   | 26 - 14           | -                           |



**EAC**

Approval ID: RU C-DE.AI30.B.01102



**cULus Recognized**

Approval ID: E60425

|             | Nominal Voltage $U_N$ | Nominal Current $I_N$ | Cross Section AWG | Cross Section $\text{mm}^2$ |
|-------------|-----------------------|-----------------------|-------------------|-----------------------------|
| Use group B | 300 V                 | 15 A                  | 26 - 14           | -                           |
| Use group C | 300 V                 | 15 A                  | 26 - 14           | -                           |
| Use group D | 600 V                 | 5 A                   | 26 - 14           | -                           |



**LR**

Approval ID: 12/20038 (E3)



**NK**

Approval ID: 14ME0912



**RS**

Approval ID: 17.00013.272



**BV**

Approval ID: 39980/B0 BV

# Double-level terminal block - PTTB 1,5/S



3208511

<https://www.phoenixcontact.com/de/produkte/3208511>

## ABS

Approval ID: 21-2192245-PDA



## EAC Ex

Approval ID: RU C-DE.HA91.B.00066



## IECEX

Approval ID: IECEX SEV13.0005U



## ATEX

Approval ID: SEV13ATEX0159U



## CCC

Approval ID: 2020322313000631



## NEPSI

Approval ID: GYJ20.1198U

# Double-level terminal block - PTTB 1,5/S



3208511

<https://www.phoenixcontact.com/de/produkte/3208511>

## Classifications

### ECLASS

|               |          |
|---------------|----------|
| ECLASS-9.0    | 27141120 |
| ECLASS-10.0.1 | 27141120 |
| ECLASS-11.0   | 27141120 |

### ETIM

|          |          |
|----------|----------|
| ETIM 8.0 | EC000897 |
|----------|----------|

### UNSPSC

|             |          |
|-------------|----------|
| UNSPSC 21.0 | 39121400 |
|-------------|----------|

# Double-level terminal block - PTTB 1,5/S



3208511

<https://www.phoenixcontact.com/de/produkte/3208511>

## Environmental Product Compliance

|            |   |
|------------|---|
| China RoHS | Environmentally friendly use period: unlimited = EFUP-e |
|            | No hazardous substances above threshold values          |

# Double-level terminal block - PTTB 1,5/S

3208511

<https://www.phoenixcontact.com/de/produkte/3208511>

## Accessories

**i** Note: Applying some accessories below might limit this product.

### Plug-in bridge

Plug-in bridge - FBS 2-3,5 - 3213014

<https://www.phoenixcontact.com/de/produkte/3213014>



Plug-in bridge, pitch: 3.5 mm, color: red

**i** Max. current carrying capacity: 16 A

---

### Plug-in bridge

Plug-in bridge - FBS 3-3,5 - 3213027

<https://www.phoenixcontact.com/de/produkte/3213027>



Plug-in bridge, pitch: 3.5 mm, color: red

**i** Max. current carrying capacity: 16 A

# Double-level terminal block - PTTB 1,5/S

3208511

<https://www.phoenixcontact.com/de/produkte/3208511>


## Plug-in bridge

Plug-in bridge - FBS 4-3,5 - 3213030

<https://www.phoenixcontact.com/de/produkte/3213030>



Plug-in bridge, pitch: 3.5 mm, color: red

 Max. current carrying capacity: 16 A

---


## Plug-in bridge

Plug-in bridge - FBS 5-3,5 - 3213043

<https://www.phoenixcontact.com/de/produkte/3213043>



Plug-in bridge, pitch: 3.5 mm, color: red

 Max. current carrying capacity: 16 A

# Double-level terminal block - PTTB 1,5/S

3208511

<https://www.phoenixcontact.com/de/produkte/3208511>

## Plug-in bridge

Plug-in bridge - FBS 10-3,5 - 3213056

<https://www.phoenixcontact.com/de/produkte/3213056>

Plug-in bridge, pitch: 3.5 mm, color: red



 Max. current carrying capacity: 16 A

---


## Plug-in bridge

Plug-in bridge - FBS 20-3,5 - 3213069

<https://www.phoenixcontact.com/de/produkte/3213069>

Plug-in bridge, pitch: 3.5 mm, color: red



 Max. current carrying capacity: 16 A

# Double-level terminal block - PTTB 1,5/S

3208511

<https://www.phoenixcontact.com/de/produkte/3208511>




## Plug-in bridge

Plug-in bridge - FBS 2-3,5 BU - 3213086

<https://www.phoenixcontact.com/de/produkte/3213086>



Plug-in bridge, pitch: 3.5 mm, color: blue

 Max. current carrying capacity: 16 A

---


## Plug-in bridge

Plug-in bridge - FBS 3-3,5 BU - 3213099

<https://www.phoenixcontact.com/de/produkte/3213099>



Plug-in bridge, pitch: 3.5 mm, color: blue

 Max. current carrying capacity: 16 A



# Double-level terminal block - PTTB 1,5/S

3208511

<https://www.phoenixcontact.com/de/produkte/3208511>




## Plug-in bridge

Plug-in bridge - FBS 4-3,5 BU - 3213109

<https://www.phoenixcontact.com/de/produkte/3213109>



Plug-in bridge, pitch: 3.5 mm, color: blue

 Max. current carrying capacity: 16 A

---


## Plug-in bridge

Plug-in bridge - FBS 5-3,5 BU - 3213112

<https://www.phoenixcontact.com/de/produkte/3213112>



Plug-in bridge, pitch: 3.5 mm, color: blue

 Max. current carrying capacity: 16 A

# Double-level terminal block - PTTB 1,5/S

3208511

<https://www.phoenixcontact.com/de/produkte/3208511>


## Plug-in bridge

Plug-in bridge - FBS 10-3,5 BU - 3213125

<https://www.phoenixcontact.com/de/produkte/3213125>



Plug-in bridge, pitch: 3.5 mm, color: blue

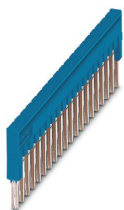
 Max. current carrying capacity: 16 A

---


## Plug-in bridge

Plug-in bridge - FBS 20-3,5 BU - 3213138

<https://www.phoenixcontact.com/de/produkte/3213138>



Plug-in bridge, pitch: 3.5 mm, color: blue

 Max. current carrying capacity: 16 A

---

# Double-level terminal block - PTTB 1,5/S

3208511

<https://www.phoenixcontact.com/de/produkte/3208511>

## Plug-in bridge

Plug-in bridge - FBS 2-3,5 GY - 3213153

<https://www.phoenixcontact.com/de/produkte/3213153>



Plug-in bridge, pitch: 3.5 mm, color: gray

 Max. current carrying capacity: 16 A

---


## Plug-in bridge

Plug-in bridge - FBS 3-3,5 GY - 3213167

<https://www.phoenixcontact.com/de/produkte/3213167>



Plug-in bridge, pitch: 3.5 mm, color: gray

 Max. current carrying capacity: 16 A

---

# Double-level terminal block - PTTB 1,5/S

3208511

<https://www.phoenixcontact.com/de/produkte/3208511>



## Plug-in bridge

Plug-in bridge - FBS 4-3,5 GY - 3213180

<https://www.phoenixcontact.com/de/produkte/3213180>



Plug-in bridge, pitch: 3.5 mm, color: gray

 Max. current carrying capacity: 16 A

---


## Plug-in bridge

Plug-in bridge - FBS 5-3,5 GY - 3213183

<https://www.phoenixcontact.com/de/produkte/3213183>



Plug-in bridge, pitch: 3.5 mm, color: gray

 Max. current carrying capacity: 16 A

# Double-level terminal block - PTTB 1,5/S

3208511

<https://www.phoenixcontact.com/de/produkte/3208511>

## Plug-in bridge

Plug-in bridge - FBS 10-3,5 GY - 3213196

<https://www.phoenixcontact.com/de/produkte/3213196>

Plug-in bridge, pitch: 3.5 mm, color: gray



 Max. current carrying capacity: 16 A

---


## Plug-in bridge

Plug-in bridge - FBS 20-3,5 GY - 3213206

<https://www.phoenixcontact.com/de/produkte/3213206>

Plug-in bridge, pitch: 3.5 mm, color: gray



 Max. current carrying capacity: 16 A

---

# Double-level terminal block - PTTB 1,5/S

3208511

<https://www.phoenixcontact.com/de/produkte/3208511>

## Potential bridge

Potential bridge - FBS 1,5/S-PV - 3216263

<https://www.phoenixcontact.com/de/produkte/3216263>



Vertical potential bridge, to connect the upper and lower level

---

## Screwdriver

Screwdriver - SZF 0-0,4X2,5 - 1204504

<https://www.phoenixcontact.com/de/produkte/1204504>



Actuation tool, for ST terminal blocks, also suitable for use as a bladed screwdriver, size: 0.4 x 2.5 x 75 mm, 2-component grip, with non-slip grip

# Double-level terminal block - PTTB 1,5/S

3208511

<https://www.phoenixcontact.com/de/produkte/3208511>

## DIN rail perforated

DIN rail perforated - NS 35/ 7,5 PERF 2000MM - 0801733

<https://www.phoenixcontact.com/de/produkte/0801733>



DIN rail perforated, acc. to EN 60715, material: Steel, galvanized, passivated with a thick layer, Standard profile, color: silver, Pack of 25 (50 m)

---

## Partition plate

Partition plate - ATP-STTB 4 - 3030747

<https://www.phoenixcontact.com/de/produkte/3030747>



Partition plate, length: 88.7 mm, width: 2 mm, height: 53 mm, color: gray

# Double-level terminal block - PTTB 1,5/S

3208511

<https://www.phoenixcontact.com/de/produkte/3208511>

## DIN rail, unperforated

DIN rail, unperforated - NS 35/ 7,5 UNPERF 2000MM - 0801681

<https://www.phoenixcontact.com/de/produkte/0801681>



DIN rail, unperforated, acc. to EN 60715, material: Steel, galvanized, passivated with a thick layer, Standard profile, color: silver, Pack of 25 (50 m)

---

## End cover

End cover - D-PTTB 1,5/S - 3208579

<https://www.phoenixcontact.com/de/produkte/3208579>

End cover, length: 65.4 mm, width: 2.2 mm, height: 34.9 mm, color: gray





# Double-level terminal block - PTTB 1,5/S

3208511

<https://www.phoenixcontact.com/de/produkte/3208511>

## DIN rail perforated

DIN rail perforated - NS 35/ 7,5 WH PERF 2000MM - 1204119

<https://www.phoenixcontact.com/de/produkte/1204119>



DIN rail perforated, acc. to EN 60715, material: Steel, Galvanized, white passivated, Standard profile, color: silver, Pack of 25 (50 m)

---

## Marker carriers

Marker carriers - STP 3,5-2 - 0830131

<https://www.phoenixcontact.com/de/produkte/0830131>



Double marker carrier, can be snapped into the PTTB 1,5/S push-in double-level terminal block, can be labeled with ZB 3,5 or ZBF 3,5

# Double-level terminal block - PTTB 1,5/S

3208511

<https://www.phoenixcontact.com/de/produkte/3208511>

## DIN rail, unperforated

DIN rail, unperforated - NS 35/ 7,5 WH UNPERF 2000MM-VPE 10 - 1204122

<https://www.phoenixcontact.com/de/produkte/1204122>



DIN rail, unperforated, acc. to EN 60715, material: Steel, Galvanized, white passivated, Standard profile, color: silver, Pack of 10 (20 m)

---

## Mounting material

Mounting material - PT-IL - 3208090

<https://www.phoenixcontact.com/de/produkte/3208090>

Operating decal for the push-in Technology



# Double-level terminal block - PTTB 1,5/S

3208511

<https://www.phoenixcontact.com/de/produkte/3208511>

## DIN rail, unperforated

DIN rail, unperforated - NS 35/ 7,5 AL UNPERF 2000MM - 0801704

<https://www.phoenixcontact.com/de/produkte/0801704>



DIN rail, unperforated, acc. to EN 60715, material: Aluminum, uncoated, Standard profile, color: silver, Pack of 25 (50 m)

---

## Actuation tool

Actuation tool - ST-BW 0 - 1200135

<https://www.phoenixcontact.com/de/produkte/1200135>



Actuation tool, for all 1.5 mm<sup>2</sup> spring cages from PT 1,5/S and FT 1,5/S

# Double-level terminal block - PTTB 1,5/S

3208511

<https://www.phoenixcontact.com/de/produkte/3208511>

## DIN rail perforated

DIN rail perforated - NS 35/ 7,5 ZN PERF 2000MM - 1206421

<https://www.phoenixcontact.com/de/produkte/1206421>



DIN rail perforated, acc. to EN 60715, material: Steel, galvanized, Standard profile, color: silver, Pack of 25 (50 m)

---

## End cover

End cover - D-PTTB 1,5/S-0,8 OG - 1029589

<https://www.phoenixcontact.com/de/produkte/1029589>

End cover, length: 65.4 mm, width: 0.8 mm, height: 34.9 mm, color: orange



# Double-level terminal block - PTTB 1,5/S

3208511

<https://www.phoenixcontact.com/de/produkte/3208511>

## DIN rail, unperforated

DIN rail, unperforated - NS 35/ 7,5 ZN UNPERF 2000MM - 1206434

<https://www.phoenixcontact.com/de/produkte/1206434>



DIN rail, unperforated, acc. to EN 60715, material: Steel, galvanized, Standard profile, color: silver, Pack of 25 (50 m)

---

## Ferrule

Ferrule - AI-S 1 - 8 TQ - 1200293

<https://www.phoenixcontact.com/de/produkte/1200293>



Ferrule, S-Slimline, sleeve length: 8 mm, length: 14.5 mm, color: turquoise

# Double-level terminal block - PTTB 1,5/S

3208511

<https://www.phoenixcontact.com/de/produkte/3208511>



## DIN rail, unperforated

DIN rail, unperforated - NS 35/ 7,5 CU UNPERF 2000MM-VPE 10 - 0801762

<https://www.phoenixcontact.com/de/produkte/0801762>



DIN rail, unperforated, acc. to EN 60715, material: Copper, uncoated, Standard profile, color: copper-colored, Pack of 10 (20 m)

---

## End cap

End cap - NS 35/ 7,5 CAP - 1206560

<https://www.phoenixcontact.com/de/produkte/1206560>

DIN rail end piece, for DIN rail NS 35/7.5



# Double-level terminal block - PTTB 1,5/S

3208511

<https://www.phoenixcontact.com/de/produkte/3208511>

## DIN rail perforated

DIN rail perforated - NS 35/15 PERF 2000MM - 1201730

<https://www.phoenixcontact.com/de/produkte/1201730>



DIN rail perforated, similar to EN 60715, material: Steel, galvanized, passivated with a thick layer, Standard profile, color: silver, Pack of 25 (50 m)

---

## DIN rail, unperforated

DIN rail, unperforated - NS 35/15 UNPERF 2000MM - 1201714

<https://www.phoenixcontact.com/de/produkte/1201714>



DIN rail, unperforated, similar to EN 60715, material: Steel, galvanized, passivated with a thick layer, Standard profile, color: silver, Pack of 25 (50 m)

# Double-level terminal block - PTTB 1,5/S

3208511

<https://www.phoenixcontact.com/de/produkte/3208511>

## DIN rail perforated

DIN rail perforated - NS 35/15 WH PERF 2000MM - 0806602

<https://www.phoenixcontact.com/de/produkte/0806602>



DIN rail perforated, similar to EN 60715, material: Steel, Galvanized, white passivated, Standard profile, color: white, Pack of 25 (50 m)

---

## DIN rail, unperforated

DIN rail, unperforated - NS 35/15 WH UNPERF 2000MM-VPE 10 - 1204135

<https://www.phoenixcontact.com/de/produkte/1204135>



DIN rail, unperforated, similar to EN 60715, material: Steel, Galvanized, white passivated, Standard profile, color: silver, Pack of 10 (20 m)



# Double-level terminal block - PTTB 1,5/S

3208511

<https://www.phoenixcontact.com/de/produkte/3208511>

## DIN rail, unperforated

DIN rail, unperforated - NS 35/15 AL UNPERF 2000MM - 1201756

<https://www.phoenixcontact.com/de/produkte/1201756>



DIN rail, unperforated, similar to EN 60715, material: Aluminum, uncoated, Standard profile, color: silver

---

## DIN rail perforated

DIN rail perforated - NS 35/15 ZN PERF 2000MM - 1206599

<https://www.phoenixcontact.com/de/produkte/1206599>



DIN rail perforated, similar to EN 60715, material: Steel, galvanized, Standard profile, color: silver, Pack of 25 (50 m)

# Double-level terminal block - PTTB 1,5/S

3208511

<https://www.phoenixcontact.com/de/produkte/3208511>

## DIN rail, unperforated

DIN rail, unperforated - NS 35/15 ZN UNPERF 2000MM - 1206586

<https://www.phoenixcontact.com/de/produkte/1206586>



DIN rail, unperforated, similar to EN 60715, material: Steel, galvanized, Standard profile, color: silver, Pack of 25 (50 m)

---

## DIN rail, unperforated

DIN rail, unperforated - NS 35/15 CU UNPERF 2000MM-VPE 10 - 1201895

<https://www.phoenixcontact.com/de/produkte/1201895>



DIN rail, unperforated, similar to EN 60715, material: Copper, uncoated, Standard profile, color: copper-colored, Pack of 10 (20 m)

# Double-level terminal block - PTTB 1,5/S

3208511

<https://www.phoenixcontact.com/de/produkte/3208511>



## End cap

End cap - NS 35/15 CAP - 1206573

<https://www.phoenixcontact.com/de/produkte/1206573>

DIN rail end piece, for DIN rail NS 35/15



---

## DIN rail, unperforated

DIN rail, unperforated - NS 35/15-2,3 UNPERF 2000MM-VPE 10 - 1201798

<https://www.phoenixcontact.com/de/produkte/1201798>



DIN rail, unperforated, acc. to EN 60715, material: Steel, galvanized, passivated with a thick layer, Standard profile 2.3 mm, color: silver, Pack of 10 (20 m)

# Double-level terminal block - PTTB 1,5/S

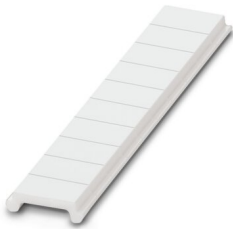
3208511

<https://www.phoenixcontact.com/de/produkte/3208511>

## Zack Marker strip, flat

Zack Marker strip, flat - ZBF 3,5:UNBEDRUCKT - 0829392

<https://www.phoenixcontact.com/de/produkte/0829392>



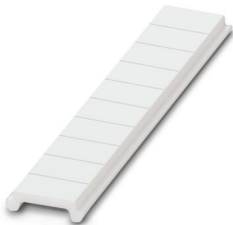
Zack Marker strip, flat, Strip, white, unlabeled, can be labeled with: PLOTMARK, CMS-P1-PLOTTER, mounting type: snapped, for terminal block width: 3.5 mm, lettering field size: 3.5 x 5.2 mm, Number of individual labels: 10

---

## Zack Marker strip, flat

Zack Marker strip, flat - ZBF 3,5 CUS - 0829394

<https://www.phoenixcontact.com/de/produkte/0829394>



Zack Marker strip, flat, can be ordered: Strip, white, labeled according to customer specifications, mounting type: snap into flat marker groove, for terminal block width: 3.5 mm, lettering field size: 3.5 x 5.2 mm, Number of individual labels: 10

# Double-level terminal block - PTTB 1,5/S

3208511

<https://www.phoenixcontact.com/de/produkte/3208511>

## Zack Marker strip, flat

Zack Marker strip, flat - ZBF 3,5,LGS:FORTL.ZAHLEN - 0801406

<https://www.phoenixcontact.com/de/produkte/0801406>



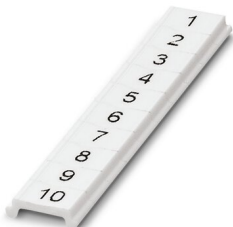
Zack Marker strip, flat, Strip, white, labeled, printed horizontally: consecutive numbers 1 ... 10, 11 ... 20, etc. up to 91 ... 100, mounting type: snapped, for terminal block width: 3.5 mm, lettering field size: 5.15 x 3.5 mm, Number of individual labels: 10

---

## Zack Marker strip, flat

Zack Marker strip, flat - ZBF 3,5,QR:FORTL.ZAHLEN - 0801407

<https://www.phoenixcontact.com/de/produkte/0801407>



Zack Marker strip, flat, Strip, white, labeled, Printed vertically: consecutive numbers 1 ... 10, 11 ... 20, etc. up to 91 ... 100, mounting type: snapped, for terminal block width: 3.5 mm, lettering field size: 5.15 x 3.5 mm, Number of individual labels: 10

# Double-level terminal block - PTTB 1,5/S

3208511

<https://www.phoenixcontact.com/de/produkte/3208511>

## Marker for terminal blocks

Marker for terminal blocks - UCT-TMF 3,5 - 0829486

<https://www.phoenixcontact.com/de/produkte/0829486>



Marker for terminal blocks, Sheet, white, unlabeled, can be labeled with: TOPMARK NEO, TOPMARK LASER, BLUEMARK ID COLOR, BLUEMARK ID, BLUEMARK CLED, THERMOMARK PRIME, THERMOMARK CARD 2.0, THERMOMARK CARD, mounting type: snapped, for terminal block width: 3.5 mm, lettering field size: 2.7 x 4.7 mm, Number of individual labels: 108

---

## Marker for terminal blocks

Marker for terminal blocks - UCT-TMF 3,5 CUS - 0829644

<https://www.phoenixcontact.com/de/produkte/0829644>



Marker for terminal blocks, can be ordered: by sheet, white, labeled according to customer specifications, mounting type: snap into flat marker groove, for terminal block width: 3.5 mm, lettering field size: 2.7 x 4.7 mm, Number of individual labels: 108

# Double-level terminal block - PTTB 1,5/S

3208511

<https://www.phoenixcontact.com/de/produkte/3208511>

## Test plugs

Test plugs - MPS-MT - 0201744

<https://www.phoenixcontact.com/de/produkte/0201744>



Test plugs, with solder connection up to 1 mm<sup>2</sup> conductor cross section, color: gray

---

## Insulating sleeve

Insulating sleeve - MPS-IH WH - 0201663

<https://www.phoenixcontact.com/de/produkte/0201663>



Insulating sleeve, color: white

# Double-level terminal block - PTTB 1,5/S

3208511

<https://www.phoenixcontact.com/de/produkte/3208511>

## Insulating sleeve

Insulating sleeve - MPS-IH RD - 0201676

<https://www.phoenixcontact.com/de/produkte/0201676>

Insulating sleeve, color: red



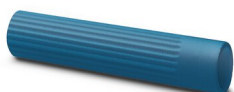
---

## Insulating sleeve

Insulating sleeve - MPS-IH BU - 0201689

<https://www.phoenixcontact.com/de/produkte/0201689>

Insulating sleeve, color: blue





# Double-level terminal block - PTTB 1,5/S

3208511

<https://www.phoenixcontact.com/de/produkte/3208511>

## Insulating sleeve

Insulating sleeve - MPS-IH YE - 0201692

<https://www.phoenixcontact.com/de/produkte/0201692>

Insulating sleeve, color: yellow



---

## Insulating sleeve

Insulating sleeve - MPS-IH GN - 0201702

<https://www.phoenixcontact.com/de/produkte/0201702>

Insulating sleeve, color: green



# Double-level terminal block - PTTB 1,5/S

3208511

<https://www.phoenixcontact.com/de/produkte/3208511>

## Insulating sleeve

Insulating sleeve - MPS-IH GY - 0201728

<https://www.phoenixcontact.com/de/produkte/0201728>

Insulating sleeve, color: gray



---

## Insulating sleeve

Insulating sleeve - MPS-IH BK - 0201731

<https://www.phoenixcontact.com/de/produkte/0201731>

Insulating sleeve, color: black



# Double-level terminal block - PTTB 1,5/S

3208511

<https://www.phoenixcontact.com/de/produkte/3208511>

## Software

Software - PROJECT COMPLETE - 1050453

<https://www.phoenixcontact.com/de/produkte/1050453>



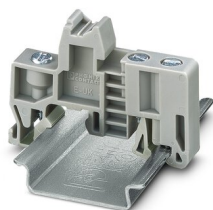
Intuitive planning and marking software for configuring terminal strips and for professional marking of marking materials for terminal blocks, conductors, cables, devices, and systems. The software is available for download

---

## End clamp

End clamp - E/UK - 1201442

<https://www.phoenixcontact.com/de/produkte/1201442>



End clamp, material: PA, color: gray, Mounting on a DIN rail NS 32 or NS 35

# Double-level terminal block - PTTB 1,5/S

3208511

<https://www.phoenixcontact.com/de/produkte/3208511>

## End clamp

End clamp - E/UK 1 - 1201413

<https://www.phoenixcontact.com/de/produkte/1201413>



End clamps, for supporting the ends of double-level and three-level terminal blocks, width: 10 mm, color: gray

---

## End clamp

End clamp - CLIPFIX 35 - 3022218

<https://www.phoenixcontact.com/de/produkte/3022218>



Quick mounting end clamp for NS 35/7,5 DIN rail or NS 35/15 DIN rail, with marking option, width: 9.5 mm, color: gray

# Double-level terminal block - PTTB 1,5/S

3208511

<https://www.phoenixcontact.com/de/produkte/3208511>

## End clamp

End clamp - CLIPFIX 35-5 - 3022276

<https://www.phoenixcontact.com/de/produkte/3022276>



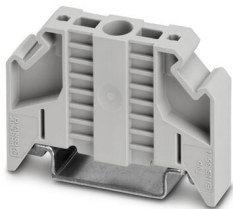
Quick mounting end clamp for NS 35/7,5 DIN rail or NS 35/15 DIN rail, with marking option, with parking option for FBS...5, FBS...6, KSS 5, KSS 6, width: 5.15 mm, color: gray

---

## End clamp

End clamp - E/NS 35 N - 0800886

<https://www.phoenixcontact.com/de/produkte/0800886>



End clamp, width: 9.5 mm, color: gray

# Double-level terminal block - PTTB 1,5/S

3208511

<https://www.phoenixcontact.com/de/produkte/3208511>

## Test plugs

Test plugs - PS-3,5 - 3031010

<https://www.phoenixcontact.com/de/produkte/3031010>



Test plugs, Modular test plug, color: red

---

## Spacer plate

Spacer plate - DP PS-3,5 - 3031011

<https://www.phoenixcontact.com/de/produkte/3031011>



Spacer plate, length: 15.9 mm, width: 3.5 mm, height: 33.5 mm, number of positions: 1, color: red

# Double-level terminal block - PTTB 1,5/S

3208511

<https://www.phoenixcontact.com/de/produkte/3208511>

## Test plugs

Test plugs - PS-3,5/E - 3031012

<https://www.phoenixcontact.com/de/produkte/3031012>



Test plugs, Individual test plug, color: red

---

## Crimping pliers

Crimping pliers - CRIMPFOX CENTRUS 6S - 1213144

<https://www.phoenixcontact.com/de/produkte/1213144>



Crimping pliers, for uninsulated and insulated ferrules, DIN 46228 Part 1 and 4, from 0.14 mm<sup>2</sup> ... 6 mm<sup>2</sup>, also for TWIN ferrules up to 2 x 4 mm<sup>2</sup>, automatic cross section adjustment, lateral insertion, equipped with fall protection

# Double-level terminal block - PTTB 1,5/S

3208511

<https://www.phoenixcontact.com/de/produkte/3208511>

## Crimping pliers

Crimping pliers - CRIMPFOX CENTRUS 10S - 1213154

<https://www.phoenixcontact.com/de/produkte/1213154>



Crimping pliers, for uninsulated and insulated ferrules, DIN 46228 Part 1 and 4, from 0.14 mm<sup>2</sup> ... 10 mm<sup>2</sup>, also for TWIN ferrules up to 2 x 4 mm<sup>2</sup>, automatic cross section adjustment, lateral insertion, equipped with fall protection

---

## Crimping pliers

Crimping pliers - CRIMPFOX CENTRUS 6H - 1213146

<https://www.phoenixcontact.com/de/produkte/1213146>



Crimping pliers, for uninsulated and insulated ferrules, DIN 46228 Part 1 and 4, from 0.14 mm<sup>2</sup> ... 6 mm<sup>2</sup>, also for TWIN ferrules up to 2 x 4 mm<sup>2</sup>, automatic cross section adjustment, lateral insertion, equipped with fall protection



# Double-level terminal block - PTTB 1,5/S

3208511

<https://www.phoenixcontact.com/de/produkte/3208511>

## Crimping pliers

Crimping pliers - CRIMPFOX CENTRUS 10H - 1213156

<https://www.phoenixcontact.com/de/produkte/1213156>



Crimping pliers, for uninsulated and insulated ferrules, DIN 46228 Part 1 and 4, from 0.14 mm<sup>2</sup> ... 10 mm<sup>2</sup>, also for TWIN ferrules up to 2 x 4 mm<sup>2</sup>, automatic cross section adjustment, lateral insertion, equipped with fall protection

---

## Crimping pliers

Crimping pliers - CRIMPFOX 10S - 1212045

<https://www.phoenixcontact.com/de/produkte/1212045>



Crimping pliers, for ferrules without insulating collar according to DIN 46228 Part 1 and ferrules with insulating collar according to DIN 46228 Part 4, 0.14 mm<sup>2</sup> ... 10 mm<sup>2</sup>, unlockable pressure lock, lateral entry

# Double-level terminal block - PTTB 1,5/S

3208511

<https://www.phoenixcontact.com/de/produkte/3208511>

## Crimping pliers

Crimping pliers - CRIMPFOX 6H - 1212046

<https://www.phoenixcontact.com/de/produkte/1212046>



Crimping pliers, for ferrules without insulating collar according to DIN 46228 Part 1 and ferrules with insulating collar according to DIN 46228 Part 4, 0.14 mm<sup>2</sup> ... 6 mm<sup>2</sup>, unlockable pressure lock, lateral entry

---

## Crimping pliers

Crimping pliers - CRIMPFOX 2,5-M - 1212719

<https://www.phoenixcontact.com/de/produkte/1212719>



Crimping pliers, for ferrules without insulating collar according to DIN 46228 Part 1 and ferrules with insulating collar according to DIN 46228 Part 4, 0.25 mm<sup>2</sup> ... 2.5 mm<sup>2</sup>, lateral entry, trapezoidal crimp

# Double-level terminal block - PTTB 1,5/S

3208511

<https://www.phoenixcontact.com/de/produkte/3208511>

## Crimping pliers

Crimping pliers - CRIMPFOX 6-M - 1212720

<https://www.phoenixcontact.com/de/produkte/1212720>



Crimping pliers, for ferrules without insulating collar according to DIN 46228 Part 1 and ferrules with insulating collar according to DIN 46228 Part 4, 0.25 mm<sup>2</sup> ... 6.0 mm<sup>2</sup>, lateral entry, trapezoidal crimp

---

## Crimping pliers

Crimping pliers - CRIMPFOX 6 - 1212034

<https://www.phoenixcontact.com/de/produkte/1212034>



Crimping pliers, for ferrules without insulating collar according to DIN 46228 Part 1 and ferrules with insulating collar according to DIN 46228 Part 4, 0.25 mm<sup>2</sup> ... 6.0 mm<sup>2</sup>, lateral entry, trapezoidal crimp

# Double-level terminal block - PTTB 1,5/S

3208511

<https://www.phoenixcontact.com/de/produkte/3208511>

## Crimping pliers

Crimping pliers - CRIMPFOX 6T - 1212037

<https://www.phoenixcontact.com/de/produkte/1212037>



Crimping pliers, for ferrules without insulating collar according to DIN 46228 Part 1 and ferrules with insulating collar according to DIN 46228 Part 4, 0.25 mm<sup>2</sup> ... 6 mm<sup>2</sup>, lateral entry, trapezoidal crimp

---

## Crimping pliers

Crimping pliers - CRIMPFOX 6T-F - 1212038

<https://www.phoenixcontact.com/de/produkte/1212038>



Crimping pliers, for ferrules without insulating collar according to DIN 46228 Part 1 and ferrules with insulating collar according to DIN 46228 Part 4, 0.25 mm<sup>2</sup> ... 6 mm<sup>2</sup>, front entry, trapezoidal crimp

# Double-level terminal block - PTTB 1,5/S

3208511

<https://www.phoenixcontact.com/de/produkte/3208511>

## Crimping pliers

Crimping pliers - CRIMPFOX 6S-F - 1212043

<https://www.phoenixcontact.com/de/produkte/1212043>



Crimping pliers, for ferrules without insulating collar according to DIN 46228 Part 1 and ferrules with insulating collar according to DIN 46228 Part 4, 0.5 mm<sup>2</sup> ... 6 mm<sup>2</sup>, front entry, square crimp

---

## Crimping pliers

Crimping pliers - CRIMPFOX-M - 1212072

<https://www.phoenixcontact.com/de/produkte/1212072>



Basic pliers, for accommodating dies for a wide range of type of contacts

---

Phoenix Contact 2022 © - all rights reserved  
<https://www.phoenixcontact.com>

PHOENIX CONTACT Deutschland GmbH  
Flachsmarktstraße 8  
D-32825 Blomberg  
+49 52 35/3-1 20 00  
[info@phoenixcontact.de](mailto:info@phoenixcontact.de)