

Component terminal block - PT 2,5-QUATTRO-DIO/R-

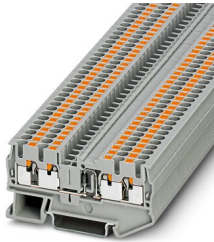
L



3210279

<https://www.phoenixcontact.com/de/produkte/3210279>

Please be informed that the data shown in this PDF document is generated from our Online Catalog. Please find the complete data in the user documentation. Our General Terms of Use for Downloads are valid.



Component terminal block, The max. current is determined by the diode. Installed: Diode 1N 4007, reverse voltage: 1300 V, maximum continuous current: 0.5 A., with integrated 1N4007 diode, nom. voltage: 800 V, nominal current: 0.5 A, connection method: Push-in connection, 1 level, Rated cross section: 1 mm², cross section: 0.14 mm² - 4 mm², mounting type: NS 35/7,5, NS 35/15, color: gray

Your advantages

- The Push-in connection terminal blocks are characterized by the system features of the CLIPLINE complete system and by easy and tool-free wiring of conductors with ferrules or solid conductors
- The compact design and front connection enable wiring in a confined space
- In addition to the testing facility in the double function shaft, all terminal blocks provide an additional test connection

Component terminal block - PT 2,5-QUATTRO-DIO/R-L



3210279

<https://www.phoenixcontact.com/de/produkte/3210279>

Commercial Data

Item number	3210279
Packing unit	50 pc
Minimum order quantity	50 pc
Sales Key	A1 - Reihenklennen
Product Key	BE2272
Catalog Page	Page 81 (C-1-2019)
GTIN	4046356335881
Weight per Piece (including packing)	10,612 g
Weight per Piece (excluding packing)	10,61 g
Customs tariff number	85369010
Country of origin	PL

Component terminal block - PT 2,5-QUATTRO-DIO/R-L



3210279

<https://www.phoenixcontact.com/de/produkte/3210279>

Technical Data

Notes

General	The max. current is determined by the diode. Installed: Diode 1N 4007, reverse voltage: 1300 V, maximum continuous current: 0.5 A.
---------	--

Product properties

Product type	Component terminal block
Number of connections	4
Number of rows	1
Potentials	1

Insulation characteristics

Overvoltage category	III
Degree of pollution	3

Electrical properties

Rated surge voltage	8 kV
Maximum power dissipation for nominal condition	0.77 W

Connection data

Number of connections per level	4
Nominal cross section	2.5 mm ²

1 level

Stripping length	8 mm ... 10 mm
Internal cylindrical gage	A3
Conductor cross section solid	0.14 mm ² ... 4 mm ²
Cross section AWG	26 ... 12
Conductor cross section flexible	0.14 mm ² ... 4 mm ²
Conductor cross section, flexible [AWG]	26 ... 14
Flexible conductor cross section flexible (ferrule, w/o plastic sleeve)	0.14 mm ² ... 2.5 mm ²
Flexible conductor cross section (ferrule with plastic sleeve)	0.14 mm ² ... 2.5 mm ²
2 conductors with the same cross section, flexible, with TWIN ferrule with plastic sleeve	0.5 mm ²
Nominal current	0.5 A
Maximum load current	0.5 A (with 4 mm ² conductor cross section, rigid)
Nominal voltage	800 V
Nominal cross section	1 mm ²

1 level Connection cross sections directly pluggable

Conductor cross section solid	0.34 mm ² ... 4 mm ²
Flexible conductor cross section flexible (ferrule, w/o plastic sleeve)	0.34 mm ² ... 2.5 mm ²

Component terminal block - PT 2,5-QUATTRO-DIO/R-L



3210279

<https://www.phoenixcontact.com/de/produkte/3210279>

Flexible conductor cross section (ferrule with plastic sleeve)	0.34 mm ² ... 2.5 mm ²
--	--

Dimensions

Width	5.2 mm
End cover width	2.2 mm
Height NS 35/15	44 mm
Height NS 35/7,5	36.5 mm
Height	1.437 "
Length	72 mm

Material specifications

Color	gray
Flammability rating according to UL 94	V0
Insulating material group	I
Insulating material	PA
Static insulating material application in cold	-60 °C
Temperature index of insulation material (DIN EN 60216-1 (VDE 0304-21))	125 °C
Relative insulation material temperature index (Elec., UL 746 B)	130 °C
Fire protection for rail vehicles (DIN EN 45545-2) R22	HL 1 - HL 3
Fire protection for rail vehicles (DIN EN 45545-2) R23	HL 1 - HL 3
Fire protection for rail vehicles (DIN EN 45545-2) R24	HL 1 - HL 3
Fire protection for rail vehicles (DIN EN 45545-2) R26	HL 1 - HL 3
Calorimetric heat release NFPA 130 (ASTM E 1354)	27,5 MJ/kg
Surface flammability NFPA 130 (ASTM E 162)	passed
Specific optical density of smoke NFPA 130 (ASTM E 662)	passed
Smoke gas toxicity NFPA 130 (SMP 800C)	passed

Mechanical properties

Mechanical data

Open side panel	Yes
-----------------	-----

Environmental and real-life conditions

Ambient conditions

Ambient temperature (operation)	-60 °C ... 105 °C (max. short-term operating temperature RTI Elec.)
Ambient temperature (storage/transport)	-25 °C ... 60 °C (for a short time, not exceeding 24 h, -60 °C to +70 °C)
Ambient temperature (assembly)	-5 °C ... 70 °C
Ambient temperature (actuation)	-5 °C ... 70 °C
Permissible humidity (storage/transport)	30 % ... 70 %

Mounting

Mounting type	NS 35/7,5
---------------	-----------

Component terminal block - PT 2,5-QUATTRO-DIO/R- L



3210279

<https://www.phoenixcontact.com/de/produkte/3210279>

NS 35/15

Component terminal block - PT 2,5-QUATTRO-DIO/R-L

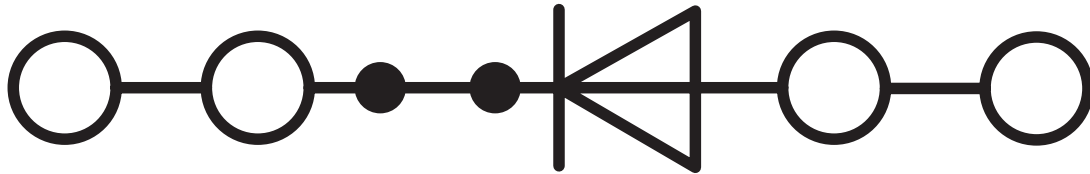


3210279

<https://www.phoenixcontact.com/de/produkte/3210279>

Drawings

Circuit diagram




Component terminal block - PT 2,5-QUATTRO-DIO/R-L





3210279


<https://www.phoenixcontact.com/de/produkte/3210279>

Approvals

 CSA Approval ID: 13631				
	Nominal Voltage U_N	Nominal Current I_N	Cross Section AWG	Cross Section mm^2
Use group B	300 V	0.5 A	26 - 12	-
Use group C	300 V	0.5 A	26 - 12	-

 EAC Approval ID: RU C-DE.AI30.B.01102				
---	--	--	--	--

 EAC Approval ID: RU C-DE.BL08.B.00644				
---	--	--	--	--

 cULus Recognized Approval ID: E60425				
	Nominal Voltage U_N	Nominal Current I_N	Cross Section AWG	Cross Section mm^2
Use group B	300 V	20 A	26 - 12	-
Current determined by the diode	300 V	0.5 A	26 - 12	-
Use group C	300 V	20 A	26 - 12	-
Current determined by the diode	300 V	0.5 A	26 - 12	-

Component terminal block - PT 2,5-QUATTRO-DIO/R-L



3210279

<https://www.phoenixcontact.com/de/produkte/3210279>

Classifications

ECLASS

ECLASS-10.0.1	27141127
ECLASS-9.0	27141127
ECLASS-11.0	27141127

ETIM

ETIM 8.0	EC000903
----------	----------

UNSPSC

UNSPSC 21.0	39121400
-------------	----------

Component terminal block - PT 2,5-QUATTRO-DIO/R-L



3210279

<https://www.phoenixcontact.com/de/produkte/3210279>

Environmental Product Compliance

REACH SVHC	Lead 7439-92-1
China RoHS	Environmentally Friendly Use Period = 50 years
	For information on hazardous substances, refer to the manufacturer's declaration available under "Downloads"

Component terminal block - PT 2,5-QUATTRO-DIO/R-L

3210279

<https://www.phoenixcontact.com/de/produkte/3210279>

Accessories

 Note: Applying some accessories below might limit this product.


Plug-in bridge

Plug-in bridge - FBS 5-5 - 3030190

<https://www.phoenixcontact.com/de/produkte/3030190>



Plug-in bridge, pitch: 5.2 mm, color: red

 Max. current carrying capacity: 24 A

Plug-in bridge

Plug-in bridge - FBS 10-5 - 3030213

<https://www.phoenixcontact.com/de/produkte/3030213>



Plug-in bridge, pitch: 5.2 mm, color: red

 Max. current carrying capacity: 24 A

Component terminal block - PT 2,5-QUATTRO-DIO/R-L

3210279

<https://www.phoenixcontact.com/de/produkte/3210279>

Plug-in bridge

Plug-in bridge - FBS 20-5 - 3030226

<https://www.phoenixcontact.com/de/produkte/3030226>



Plug-in bridge, pitch: 5.2 mm, color: red

 Max. current carrying capacity: 24 A

Plug-in bridge

Plug-in bridge - FBS 50-5 - 3038930

<https://www.phoenixcontact.com/de/produkte/3038930>



Plug-in bridge, pitch: 5.2 mm, color: red

 Max. current carrying capacity: 24 A

Component terminal block - PT 2,5-QUATTRO-DIO/R-L

3210279

<https://www.phoenixcontact.com/de/produkte/3210279>

Plug-in bridge

Plug-in bridge - FBS 2-5 - 3030161

<https://www.phoenixcontact.com/de/produkte/3030161>



Plug-in bridge, pitch: 5.2 mm, color: red

 Max. current carrying capacity: 24 A


Plug-in bridge

Plug-in bridge - FBS 3-5 - 3030174

<https://www.phoenixcontact.com/de/produkte/3030174>



Plug-in bridge, pitch: 5.2 mm, color: red

 Max. current carrying capacity: 24 A

Component terminal block - PT 2,5-QUATTRO-DIO/R-L

3210279

<https://www.phoenixcontact.com/de/produkte/3210279>

Plug-in bridge

Plug-in bridge - FBS 4-5 - 3030187

<https://www.phoenixcontact.com/de/produkte/3030187>



Plug-in bridge, pitch: 5.2 mm, color: red

 Max. current carrying capacity: 24 A

Plug-in bridge

Plug-in bridge - FBSR 2-5 - 3033702

<https://www.phoenixcontact.com/de/produkte/3033702>



Plug-in bridge, pitch: 5.2 mm, color: red

 Max. current carrying capacity: 17.5 A

Component terminal block - PT 2,5-QUATTRO-DIO/R-L

3210279

<https://www.phoenixcontact.com/de/produkte/3210279>


Plug-in bridge

Plug-in bridge - FBSR 3-5 - 3001591

<https://www.phoenixcontact.com/de/produkte/3001591>



Plug-in bridge, pitch: 5.2 mm, color: red

 Max. current carrying capacity: 17.5 A

Plug-in bridge

Plug-in bridge - FBSR 4-5 - 3001592

<https://www.phoenixcontact.com/de/produkte/3001592>



Plug-in bridge, pitch: 5.2 mm, color: red

 Max. current carrying capacity: 17.5 A

Component terminal block - PT 2,5-QUATTRO-DIO/R-L

3210279

<https://www.phoenixcontact.com/de/produkte/3210279>


Plug-in bridge

Plug-in bridge - FBSR 5-5 - 3001593

<https://www.phoenixcontact.com/de/produkte/3001593>



Plug-in bridge, pitch: 5.2 mm, color: red

 Max. current carrying capacity: 17.5 A

Plug-in bridge

Plug-in bridge - FBSR 10-5 - 3033710

<https://www.phoenixcontact.com/de/produkte/3033710>



Plug-in bridge, pitch: 5.2 mm, color: red

 Max. current carrying capacity: 17.5 A

Component terminal block - PT 2,5-QUATTRO-DIO/R-L

3210279

<https://www.phoenixcontact.com/de/produkte/3210279>

Plug-in bridge

Plug-in bridge - FBS 2-5 BU - 3036877

<https://www.phoenixcontact.com/de/produkte/3036877>



Plug-in bridge, pitch: 5.2 mm, color: blue

 Max. current carrying capacity: 24 A

Plug-in bridge

Plug-in bridge - FBS 3-5 BU - 3036880

<https://www.phoenixcontact.com/de/produkte/3036880>



Plug-in bridge, pitch: 5.2 mm, color: blue

 Max. current carrying capacity: 24 A

Component terminal block - PT 2,5-QUATTRO-DIO/R-L

3210279

<https://www.phoenixcontact.com/de/produkte/3210279>


Plug-in bridge

Plug-in bridge - FBS 4-5 BU - 3036893

<https://www.phoenixcontact.com/de/produkte/3036893>



Plug-in bridge, pitch: 5.2 mm, color: blue

 Max. current carrying capacity: 24 A


Plug-in bridge

Plug-in bridge - FBS 5-5 BU - 3036903

<https://www.phoenixcontact.com/de/produkte/3036903>



Plug-in bridge, pitch: 5.2 mm, color: blue

 Max. current carrying capacity: 24 A

Component terminal block - PT 2,5-QUATTRO-DIO/R-L

3210279

<https://www.phoenixcontact.com/de/produkte/3210279>


Plug-in bridge

Plug-in bridge - FBS 10-5 BU - 3036916

<https://www.phoenixcontact.com/de/produkte/3036916>



Plug-in bridge, pitch: 5.2 mm, color: blue

 Max. current carrying capacity: 24 A

Plug-in bridge

Plug-in bridge - FBS 20-5 BU - 3036929

<https://www.phoenixcontact.com/de/produkte/3036929>



Plug-in bridge, pitch: 5.2 mm, color: blue

 Max. current carrying capacity: 24 A

Component terminal block - PT 2,5-QUATTRO-DIO/R-L

3210279

<https://www.phoenixcontact.com/de/produkte/3210279>

Plug-in bridge

Plug-in bridge - FBS 50-5 BU - 3032114

<https://www.phoenixcontact.com/de/produkte/3032114>



Plug-in bridge, Version with single- or double-sided cutting edge. Please keep in mind the possible impact on touch protection as well as air clearances and creepage distances., pitch: 5.2 mm, color: blue

 Max. current carrying capacity: 24 A

Reducing bridge

Reducing bridge - RB ST (2,5/4)-1,5/S - 3214356

<https://www.phoenixcontact.com/de/produkte/3214356>



Reducing bridge, pitch: 6.7 mm, color: red

 Max. current carrying capacity: 24 A

Component terminal block - PT 2,5-QUATTRO-DIO/R-L

3210279

<https://www.phoenixcontact.com/de/produkte/3210279>

Reducing bridge

Reducing bridge - RB ST 6-(2,5/4) - 3030860

<https://www.phoenixcontact.com/de/produkte/3030860>



Reducing bridge, pitch: 9 mm, color: red

 Max. current carrying capacity: 35 A


Reducing bridge

Reducing bridge - RB ST 10-(2,5/4) - 3030873

<https://www.phoenixcontact.com/de/produkte/3030873>



Reducing bridge, pitch: 10 mm, color: red

 Max. current carrying capacity: 35 A

Component terminal block - PT 2,5-QUATTRO-DIO/R-L

3210279

<https://www.phoenixcontact.com/de/produkte/3210279>


Reducing bridge

Reducing bridge - RB ST 16-(2,5/4) - 3030886

<https://www.phoenixcontact.com/de/produkte/3030886>



Reducing bridge, pitch: 11 mm, color: red

 Max. current carrying capacity: 35 A

Reducing bridge

Reducing bridge - RB ST 35-(2,5/4) - 3030899

<https://www.phoenixcontact.com/de/produkte/3030899>



Reducing bridge, pitch: 11 mm, color: red

 Max. current carrying capacity: 35 A

Component terminal block - PT 2,5-QUATTRO-DIO/R-L

3210279

<https://www.phoenixcontact.com/de/produkte/3210279>

Reducing bridge

Reducing bridge - RB ST (2,5/4)-1,5 - 3038943

<https://www.phoenixcontact.com/de/produkte/3038943>



Reducing bridge, pitch: 7.1 mm, color: red

 Max. current carrying capacity: 24 A

Reducing bridge

Reducing bridge - RB UT 6-ST(2,5/4) - 3047264

<https://www.phoenixcontact.com/de/produkte/3047264>



Reducing bridge, pitch: 9.5 mm, color: red

 Max. current carrying capacity: 35 A

Component terminal block - PT 2,5-QUATTRO-DIO/R-L

3210279

<https://www.phoenixcontact.com/de/produkte/3210279>

Reducing bridge

Reducing bridge - RB UT 35-ST(2,5/4) - 3047280

<https://www.phoenixcontact.com/de/produkte/3047280>



Reducing bridge, pitch: 10.8 mm, color: red

 Max. current carrying capacity: 40 A


Reducing bridge

Reducing bridge - RB UT 10-ST(2,5/4) - 3047086

<https://www.phoenixcontact.com/de/produkte/3047086>



Reducing bridge, pitch: 10.2 mm, color: red

 Max. current carrying capacity: 40 A

Component terminal block - PT 2,5-QUATTRO-DIO/R-L

3210279

<https://www.phoenixcontact.com/de/produkte/3210279>

Reducing bridge

Reducing bridge - RB UT 16-ST(2,5/4) - 3047099

<https://www.phoenixcontact.com/de/produkte/3047099>



Reducing bridge, pitch: 11 mm, color: red

 Max. current carrying capacity: 40 A

Marker carriers

Marker carriers - STP 5-2-ZB - 3037643

<https://www.phoenixcontact.com/de/produkte/3037643>



Double marker carrier, snaps onto the spring-cage terminal blocks ST 2.5..., labeled with ZB 5 or ZBF 5

Component terminal block - PT 2,5-QUATTRO-DIO/R-L

3210279

<https://www.phoenixcontact.com/de/produkte/3210279>

DIN rail perforated

DIN rail perforated - NS 35/ 7,5 PERF 2000MM - 0801733

<https://www.phoenixcontact.com/de/produkte/0801733>



DIN rail perforated, acc. to EN 60715, material: Steel, galvanized, passivated with a thick layer, Standard profile, color: silver, Pack of 25 (50 m)

Group marker label for terminal marking

Group marker label for terminal marking - GBS 5-25X12 - 0810588

<https://www.phoenixcontact.com/de/produkte/0810588>



Group marker label, snaps onto terminal center for screw, spring-cage and quick connection terminal blocks, labeled with a 25 x 12 mm label or manually with the B-STIFT, in the foot part with ZB 5

Component terminal block - PT 2,5-QUATTRO-DIO/R-L

3210279

<https://www.phoenixcontact.com/de/produkte/3210279>

DIN rail, unperforated

DIN rail, unperforated - NS 35/ 7,5 UNPERF 2000MM - 0801681

<https://www.phoenixcontact.com/de/produkte/0801681>



DIN rail, unperforated, acc. to EN 60715, material: Steel, galvanized, passivated with a thick layer, Standard profile, color: silver, Pack of 25 (50 m)

Screwdriver

Screwdriver - SZF 1-0,6X3,5 - 1204517

<https://www.phoenixcontact.com/de/produkte/1204517>



Actuation tool, for ST terminal blocks, also suitable for use as a bladed screwdriver, size: 0.6 x 3.5 x 100 mm, 2-component grip, with non-slip grip

Component terminal block - PT 2,5-QUATTRO-DIO/R-L



3210279

<https://www.phoenixcontact.com/de/produkte/3210279>

DIN rail perforated

DIN rail perforated - NS 35/ 7,5 WH PERF 2000MM - 1204119

<https://www.phoenixcontact.com/de/produkte/1204119>



DIN rail perforated, acc. to EN 60715, material: Steel, Galvanized, white passivated, Standard profile, color: silver, Pack of 25 (50 m)

Group marker label for terminal marking

Group marker label for terminal marking - GBS-ZB/26X6 - 0809298

<https://www.phoenixcontact.com/de/produkte/0809298>



Group marking label, snaps onto terminal center for screw, spring-cage and quick connection terminal blocks, labeled with ESL 26x6 mm or EST 25x6 mm, in the foot part with Zack marker strip, length: 29 mm

Component terminal block - PT 2,5-QUATTRO-DIO/R-L

3210279

<https://www.phoenixcontact.com/de/produkte/3210279>

DIN rail, unperforated

DIN rail, unperforated - NS 35/ 7,5 WH UNPERF 2000MM-VPE 10 - 1204122

<https://www.phoenixcontact.com/de/produkte/1204122>



DIN rail, unperforated, acc. to EN 60715, material: Steel, Galvanized, white passivated, Standard profile, color: silver, Pack of 10 (20 m)

Partition plate

Partition plate - ATP-ST QUATTRO - 3030815

<https://www.phoenixcontact.com/de/produkte/3030815>

Partition plate, length: 90.9 mm, width: 2 mm, height: 45 mm, color: gray



Component terminal block - PT 2,5-QUATTRO-DIO/R-L

3210279

<https://www.phoenixcontact.com/de/produkte/3210279>

DIN rail, unperforated

DIN rail, unperforated - NS 35/ 7,5 AL UNPERF 2000MM - 0801704

<https://www.phoenixcontact.com/de/produkte/0801704>



DIN rail, unperforated, acc. to EN 60715, material: Aluminum, uncoated, Standard profile, color: silver, Pack of 25 (50 m)

End cover

End cover - D-ST 2,5-QUATTRO - 3030514

<https://www.phoenixcontact.com/de/produkte/3030514>

End cover, length: 72.2 mm, width: 2.2 mm, height: 29.1 mm, color: gray



Component terminal block - PT 2,5-QUATTRO-DIO/R-L

3210279

<https://www.phoenixcontact.com/de/produkte/3210279>

DIN rail perforated

DIN rail perforated - NS 35/ 7,5 ZN PERF 2000MM - 1206421

<https://www.phoenixcontact.com/de/produkte/1206421>



DIN rail perforated, acc. to EN 60715, material: Steel, galvanized, Standard profile, color: silver, Pack of 25 (50 m)

Cover segment

Cover segment - DS-ST 2,5 - 3036602

<https://www.phoenixcontact.com/de/produkte/3036602>



End cover segments, large segment: 32.25 x 13.83 x 0.9, small segment: 22.65 x 11.65 x 0.9, color: gray

Component terminal block - PT 2,5-QUATTRO-DIO/R-L

3210279

<https://www.phoenixcontact.com/de/produkte/3210279>

DIN rail, unperforated

DIN rail, unperforated - NS 35/ 7,5 ZN UNPERF 2000MM - 1206434

<https://www.phoenixcontact.com/de/produkte/1206434>



DIN rail, unperforated, acc. to EN 60715, material: Steel, galvanized, Standard profile, color: silver, Pack of 25 (50 m)

End cover

End cover - D-ST 2,5-QUATTRO-0,8 OG - 3030513

<https://www.phoenixcontact.com/de/produkte/3030513>

End cover, length: 72 mm, width: 0.8 mm, height: 29 mm, color: orange



Component terminal block - PT 2,5-QUATTRO-DIO/R-L

3210279

<https://www.phoenixcontact.com/de/produkte/3210279>

DIN rail, unperforated

DIN rail, unperforated - NS 35/ 7,5 CU UNPERF 2000MM-VPE 10 - 0801762

<https://www.phoenixcontact.com/de/produkte/0801762>



DIN rail, unperforated, acc. to EN 60715, material: Copper, uncoated, Standard profile, color: copper-colored, Pack of 10 (20 m)

Mounting material

Mounting material - PT-IL - 3208090

<https://www.phoenixcontact.com/de/produkte/3208090>

Operating decal for the push-in Technology



Component terminal block - PT 2,5-QUATTRO-DIO/R-L

3210279

<https://www.phoenixcontact.com/de/produkte/3210279>

End cap

End cap - NS 35/ 7,5 CAP - 1206560

<https://www.phoenixcontact.com/de/produkte/1206560>

DIN rail end piece, for DIN rail NS 35/7.5



Actuation tool

Actuation tool - ST-BW - 1207608

<https://www.phoenixcontact.com/de/produkte/1207608>

Actuation tool, for all 2.5 mm² - 4.0 mm² spring-cages



Component terminal block - PT 2,5-QUATTRO-DIO/R-L

3210279

<https://www.phoenixcontact.com/de/produkte/3210279>

DIN rail perforated

DIN rail perforated - NS 35/15 PERF 2000MM - 1201730

<https://www.phoenixcontact.com/de/produkte/1201730>

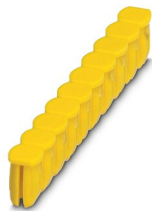


DIN rail perforated, similar to EN 60715, material: Steel, galvanized, passivated with a thick layer, Standard profile, color: silver, Pack of 25 (50 m)

Filler plugs

Filler plugs - CEC 2,5 - 3062757

<https://www.phoenixcontact.com/de/produkte/3062757>



Cover for conductor shaft, 10-pos., for spring cage terminal blocks (ST) and terminal blocks with push-in technology (PT) with a width of 5.2 mm

Component terminal block - PT 2,5-QUATTRO-DIO/R-L

3210279

<https://www.phoenixcontact.com/de/produkte/3210279>

DIN rail, unperforated

DIN rail, unperforated - NS 35/15 UNPERF 2000MM - 1201714

<https://www.phoenixcontact.com/de/produkte/1201714>



DIN rail, unperforated, similar to EN 60715, material: Steel, galvanized, passivated with a thick layer, Standard profile, color: silver, Pack of 25 (50 m)

Warning label

Warning label - WS PT 2,5 - 1029026

<https://www.phoenixcontact.com/de/produkte/1029026>



Warning label, yellow/black, labeled: Lightning flash, mounting type: plug in, for terminal block width: 5.2 mm

Component terminal block - PT 2,5-QUATTRO-DIO/R-L

3210279

<https://www.phoenixcontact.com/de/produkte/3210279>

DIN rail perforated

DIN rail perforated - NS 35/15 WH PERF 2000MM - 0806602

<https://www.phoenixcontact.com/de/produkte/0806602>



DIN rail perforated, similar to EN 60715, material: Steel, Galvanized, white passivated, Standard profile, color: white, Pack of 25 (50 m)

Warning label

Warning label - WS-DIO PT 2,5 - 1029037

<https://www.phoenixcontact.com/de/produkte/1029037>



Warning label, yellow/black, labeled: Diode, mounting type: plug in, for terminal block width: 5.2 mm

Component terminal block - PT 2,5-QUATTRO-DIO/R-L

3210279

<https://www.phoenixcontact.com/de/produkte/3210279>

DIN rail, unperforated

DIN rail, unperforated - NS 35/15 WH UNPERF 2000MM-VPE 10 - 1204135

<https://www.phoenixcontact.com/de/produkte/1204135>



DIN rail, unperforated, similar to EN 60715, material: Steel, Galvanized, white passivated, Standard profile, color: silver, Pack of 10 (20 m)

Wire bridge

Wire bridge - FBSW 2-5/250MM - 3030172

<https://www.phoenixcontact.com/de/produkte/3030172>

Wire bridge, color: red/black



Component terminal block - PT 2,5-QUATTRO-DIO/R-L

3210279

<https://www.phoenixcontact.com/de/produkte/3210279>

DIN rail, unperforated

DIN rail, unperforated - NS 35/15 AL UNPERF 2000MM - 1201756

<https://www.phoenixcontact.com/de/produkte/1201756>



DIN rail, unperforated, similar to EN 60715, material: Aluminum, uncoated, Standard profile, color: silver

Wire bridge

Wire bridge - FBSW 2-5/60MM - 3030170

<https://www.phoenixcontact.com/de/produkte/3030170>

Wire bridge, Not suitable for railway applications, color: red/black



Component terminal block - PT 2,5-QUATTRO-DIO/R-L

3210279

<https://www.phoenixcontact.com/de/produkte/3210279>

DIN rail perforated

DIN rail perforated - NS 35/15 ZN PERF 2000MM - 1206599

<https://www.phoenixcontact.com/de/produkte/1206599>



DIN rail perforated, similar to EN 60715, material: Steel, galvanized, Standard profile, color: silver, Pack of 25 (50 m)

Wire bridge

Wire bridge - FBSW 2-5/110MM - 3030171

<https://www.phoenixcontact.com/de/produkte/3030171>

Wire bridge, color: red/black



Component terminal block - PT 2,5-QUATTRO-DIO/R-L

3210279

<https://www.phoenixcontact.com/de/produkte/3210279>

DIN rail, unperforated

DIN rail, unperforated - NS 35/15 ZN UNPERF 2000MM - 1206586

<https://www.phoenixcontact.com/de/produkte/1206586>



DIN rail, unperforated, similar to EN 60715, material: Steel, galvanized, Standard profile, color: silver, Pack of 25 (50 m)

DIN rail, unperforated

DIN rail, unperforated - NS 35/15 CU UNPERF 2000MM-VPE 10 - 1201895

<https://www.phoenixcontact.com/de/produkte/1201895>



DIN rail, unperforated, similar to EN 60715, material: Copper, uncoated, Standard profile, color: copper-colored, Pack of 10 (20 m)

Component terminal block - PT 2,5-QUATTRO-DIO/R-L

3210279

<https://www.phoenixcontact.com/de/produkte/3210279>

End cap

End cap - NS 35/15 CAP - 1206573

<https://www.phoenixcontact.com/de/produkte/1206573>

DIN rail end piece, for DIN rail NS 35/15



DIN rail, unperforated

DIN rail, unperforated - NS 35/15-2,3 UNPERF 2000MM-VPE 10 - 1201798

<https://www.phoenixcontact.com/de/produkte/1201798>



DIN rail, unperforated, acc. to EN 60715, material: Steel, galvanized, passivated with a thick layer, Standard profile 2.3 mm, color: silver, Pack of 10 (20 m)

Component terminal block - PT 2,5-QUATTRO-DIO/R-L

3210279

<https://www.phoenixcontact.com/de/produkte/3210279>

Zack marker strip

Zack marker strip - ZB 5 :UNBEDRUCKT - 1050004

<https://www.phoenixcontact.com/de/produkte/1050004>

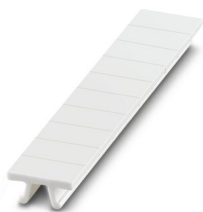


Zack marker strip, Strip, white, unlabeled, can be labeled with: PLOTMARK, CMS-P1-PLOTTER, mounting type: snapped, for terminal block width: 5.2 mm, lettering field size: 5.1 x 10.5 mm, Number of individual labels: 10

Zack marker strip

Zack marker strip - ZB 5 CUS - 0824962

<https://www.phoenixcontact.com/de/produkte/0824962>



Zack marker strip, can be ordered: Strip, white, labeled according to customer specifications, mounting type: snap into tall marker groove, for terminal block width: 5.2 mm, lettering field size: 5.15 x 10.5 mm, Number of individual labels: 10

Component terminal block - PT 2,5-QUATTRO-DIO/R-L

3210279

<https://www.phoenixcontact.com/de/produkte/3210279>

Zack marker strip

Zack marker strip - ZB 5,LGS:FORTL.ZAHLEN - 1050017

<https://www.phoenixcontact.com/de/produkte/1050017>

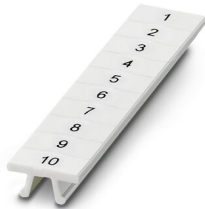


Zack marker strip, Strip, white, labeled, printed horizontally: consecutive numbers 1 ... 10, 11 ... 20, etc. up to 491 ... 500, mounting type: snapped, for terminal block width: 5.2 mm, lettering field size: 5.15 x 10.5 mm, Number of individual labels: 10

Zack marker strip

Zack marker strip - ZB 5,QR:FORTL.ZAHLEN - 1050020

<https://www.phoenixcontact.com/de/produkte/1050020>



Zack marker strip, white, Printed vertically: consecutive numbers 1 ... 10, 11 ... 20, etc. up to 491 ... 500, mounting type: snapped, for terminal block width: 5.2 mm, lettering field size: 5.15 x 10.5 mm

Component terminal block - PT 2,5-QUATTRO-DIO/R-L

3210279

<https://www.phoenixcontact.com/de/produkte/3210279>

Zack marker strip

Zack marker strip - ZB 5,LGS:GLEICHE ZAHLEN - 1050033

<https://www.phoenixcontact.com/de/produkte/1050033>

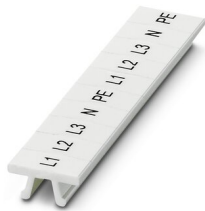


Zack marker strip, Strip, white, labeled, can be labeled with: CMS-P1-PLOTTER, printed horizontally: Identical numbers 1 or 2, etc. up to 100, mounting type: snapped, for terminal block width: 5.2 mm, lettering field size: 5.15 x 10.5 mm, Number of individual labels: 10

Zack marker strip

Zack marker strip - ZB 5,LGS:L1-N,PE - 1050415

<https://www.phoenixcontact.com/de/produkte/1050415>



Zack marker strip, Strip, white, labeled, horizontal: L1, L2, L3, N, PE, L1, L2, L3, N, PE, mounting type: snapped, for terminal block width: 5.2 mm, lettering field size: 5.15 x 10.5 mm, Number of individual labels: 10

Component terminal block - PT 2,5-QUATTRO-DIO/R-L

3210279

<https://www.phoenixcontact.com/de/produkte/3210279>

Marker for terminal blocks

Marker for terminal blocks - UC-TM 5 - 0818108

<https://www.phoenixcontact.com/de/produkte/0818108>



Marker for terminal blocks, Sheet, white, unlabeled, can be labeled with: BLUEMARK ID COLOR, BLUEMARK ID, BLUEMARK CLED, PLOTMARK, CMS-P1-PLOTTER, mounting type: snapped, for terminal block width: 5.2 mm, lettering field size: 10.5 x 4.6 mm, Number of individual labels: 96

Marker for terminal blocks

Marker for terminal blocks - UC-TM 5 CUS - 0824581

<https://www.phoenixcontact.com/de/produkte/0824581>



Marker for terminal blocks, can be ordered: by sheet, white, labeled according to customer specifications, mounting type: snap into tall marker groove, for terminal block width: 5.2 mm, lettering field size: 10.5 x 4.6 mm, Number of individual labels: 96

Component terminal block - PT 2,5-QUATTRO-DIO/R-

L



3210279

<https://www.phoenixcontact.com/de/produkte/3210279>

Marker for terminal blocks

Marker for terminal blocks - UCT-TM 5 - 0828734

<https://www.phoenixcontact.com/de/produkte/0828734>



Marker for terminal blocks, Sheet, white, unlabeled, can be labeled with: TOPMARK NEO, TOPMARK LASER, BLUEMARK ID COLOR, BLUEMARK ID, BLUEMARK CLED, THERMOMARK PRIME, THERMOMARK CARD 2.0, THERMOMARK CARD, mounting type: snapped, for terminal block width: 5.2 mm, lettering field size: 4.6 x 10.5 mm, Number of individual labels: 72

Marker for terminal blocks

Marker for terminal blocks - UCT-TM 5 CUS - 0829595

<https://www.phoenixcontact.com/de/produkte/0829595>



Marker for terminal blocks, can be ordered: by sheet, white, labeled according to customer specifications, mounting type: snap into tall marker groove, for terminal block width: 5.2 mm, lettering field size: 4.6 x 10.5 mm, Number of individual labels: 72

Component terminal block - PT 2,5-QUATTRO-DIO/R-

L

3210279

<https://www.phoenixcontact.com/de/produkte/3210279>

Zack Marker strip, flat

Zack Marker strip, flat - ZBF 5:UNBEDRUCKT - 0808642

<https://www.phoenixcontact.com/de/produkte/0808642>



Zack Marker strip, flat, Strip, white, unlabeled, can be labeled with: PLOTMARK, CMS-P1-PLOTTER, mounting type: snapped, for terminal block width: 5 mm, lettering field size: 5.1 x 5.2 mm, Number of individual labels: 10

Zack Marker strip, flat

Zack Marker strip, flat - ZBF 5 CUS - 0825025

<https://www.phoenixcontact.com/de/produkte/0825025>



Zack Marker strip, flat, can be ordered: Strip, white, labeled according to customer specifications, mounting type: snap into flat marker groove, for terminal block width: 5 mm, lettering field size: 5.15 x 5.15 mm, Number of individual labels: 10

Component terminal block - PT 2,5-QUATTRO-DIO/R-L

3210279

<https://www.phoenixcontact.com/de/produkte/3210279>

Zack Marker strip, flat

Zack Marker strip, flat - ZBF 5,LGS:FORTL.ZAHLEN - 0808671

<https://www.phoenixcontact.com/de/produkte/0808671>



Zack Marker strip, flat, Strip, white, labeled, printed horizontally: consecutive numbers 1 ... 10, 11 ... 20, etc. up to 491 ... 500, mounting type: snapped, for terminal block width: 5 mm, lettering field size: 5.15 x 5.15 mm, Number of individual labels: 10

Zack Marker strip, flat

Zack Marker strip, flat - ZBF 5,QR:FORTL.ZAHLEN - 0808697

<https://www.phoenixcontact.com/de/produkte/0808697>



Zack Marker strip, flat, Strip, white, labeled, Printed vertically: consecutive numbers 1 ... 10, 11 ... 20, etc. up to 91 ... 100, mounting type: snapped, for terminal block width: 5 mm, lettering field size: 5.15 x 5.15 mm, Number of individual labels: 10

Component terminal block - PT 2,5-QUATTRO-DIO/R-L

3210279

<https://www.phoenixcontact.com/de/produkte/3210279>

Zack Marker strip, flat

Zack Marker strip, flat - ZBF 5,LGS:GERADE ZAHLEN - 0810821

<https://www.phoenixcontact.com/de/produkte/0810821>



Zack Marker strip, flat, Strip, white, labeled, printed horizontally: consecutive even numbers 2 ... 20, 22 ... 40, etc. up to 82 ... 100, mounting type: snapped, for terminal block width: 5 mm, lettering field size: 5.15 x 5.15 mm, Number of individual labels: 10

Zack Marker strip, flat

Zack Marker strip, flat - ZBF 5,LGS:UNGERADE ZAHLEN - 0810863

<https://www.phoenixcontact.com/de/produkte/0810863>



Zack Marker strip, flat, Strip, white, labeled, printed horizontally: Odd numbers 1 - 19, 21 - 39, etc. up to 81 - 99, mounting type: snapped, for terminal block width: 5 mm, lettering field size: 5.15 x 5.15 mm, Number of individual labels: 10

Component terminal block - PT 2,5-QUATTRO-DIO/R-

L



3210279

<https://www.phoenixcontact.com/de/produkte/3210279>

Marker for terminal blocks

Marker for terminal blocks - UC-TMF 5 - 0818153

<https://www.phoenixcontact.com/de/produkte/0818153>



Marker for terminal blocks, Sheet, white, unlabeled, can be labeled with: BLUEMARK ID COLOR, BLUEMARK ID, BLUEMARK CLED, PLOTMARK, CMS-P1-PLOTTER, mounting type: snapped, for terminal block width: 5.2 mm, lettering field size: 4.6 x 5.1 mm, Number of individual labels: 96

Marker for terminal blocks

Marker for terminal blocks - UC-TMF 5 CUS - 0824638

<https://www.phoenixcontact.com/de/produkte/0824638>



Marker for terminal blocks, can be ordered: by sheet, white, labeled according to customer specifications, mounting type: snap into flat marker groove, for terminal block width: 5.2 mm, lettering field size: 4.6 x 5.1 mm, Number of individual labels: 96

Component terminal block - PT 2,5-QUATTRO-DIO/R-L

3210279

<https://www.phoenixcontact.com/de/produkte/3210279>

Marker for terminal blocks

Marker for terminal blocks - UCT-TMF 5 - 0828744

<https://www.phoenixcontact.com/de/produkte/0828744>



Marker for terminal blocks, Sheet, white, unlabeled, can be labeled with: TOPMARK NEO, TOPMARK LASER, BLUEMARK ID COLOR, BLUEMARK ID, BLUEMARK CLED, THERMOMARK PRIME, THERMOMARK CARD 2.0, THERMOMARK CARD, mounting type: snapped, for terminal block width: 5.2 mm, lettering field size: 4.4 x 4.7 mm, Number of individual labels: 72

Marker for terminal blocks

Marker for terminal blocks - UCT-TMF 5 CUS - 0829658

<https://www.phoenixcontact.com/de/produkte/0829658>



Marker for terminal blocks, can be ordered: by sheet, white, labeled according to customer specifications, mounting type: snap into flat marker groove, for terminal block width: 5.2 mm, lettering field size: 4.4 x 4.7 mm, Number of individual labels: 72

Component terminal block - PT 2,5-QUATTRO-DIO/R-L

3210279

<https://www.phoenixcontact.com/de/produkte/3210279>

Test plugs

Test plugs - MPS-MT - 0201744

<https://www.phoenixcontact.com/de/produkte/0201744>



Test plugs, with solder connection up to 1 mm² conductor cross section, color: gray

Insulating sleeve

Insulating sleeve - MPS-IH WH - 0201663

<https://www.phoenixcontact.com/de/produkte/0201663>



Insulating sleeve, color: white

Component terminal block - PT 2,5-QUATTRO-DIO/R-L

3210279

<https://www.phoenixcontact.com/de/produkte/3210279>

Insulating sleeve

Insulating sleeve - MPS-IH RD - 0201676

<https://www.phoenixcontact.com/de/produkte/0201676>

Insulating sleeve, color: red

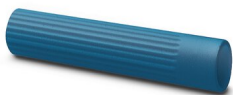


Insulating sleeve

Insulating sleeve - MPS-IH BU - 0201689

<https://www.phoenixcontact.com/de/produkte/0201689>

Insulating sleeve, color: blue



Component terminal block - PT 2,5-QUATTRO-DIO/R-L

3210279

<https://www.phoenixcontact.com/de/produkte/3210279>

Insulating sleeve

Insulating sleeve - MPS-IH YE - 0201692

<https://www.phoenixcontact.com/de/produkte/0201692>

Insulating sleeve, color: yellow



Insulating sleeve

Insulating sleeve - MPS-IH GN - 0201702

<https://www.phoenixcontact.com/de/produkte/0201702>

Insulating sleeve, color: green



Component terminal block - PT 2,5-QUATTRO-DIO/R-L

3210279

<https://www.phoenixcontact.com/de/produkte/3210279>

Insulating sleeve

Insulating sleeve - MPS-IH GY - 0201728

<https://www.phoenixcontact.com/de/produkte/0201728>

Insulating sleeve, color: gray



Insulating sleeve

Insulating sleeve - MPS-IH BK - 0201731

<https://www.phoenixcontact.com/de/produkte/0201731>

Insulating sleeve, color: black



Component terminal block - PT 2,5-QUATTRO-DIO/R-L

3210279

<https://www.phoenixcontact.com/de/produkte/3210279>

Insulating sleeve

Insulating sleeve - ISH 2,5/0,2 - 3002843

<https://www.phoenixcontact.com/de/produkte/3002843>



Insulating sleeve, color: white

Insulating sleeve

Insulating sleeve - ISH 2,5/0,5 - 3002856

<https://www.phoenixcontact.com/de/produkte/3002856>



Insulating sleeve, color: gray

Component terminal block - PT 2,5-QUATTRO-DIO/R-L

3210279

<https://www.phoenixcontact.com/de/produkte/3210279>

Insulating sleeve

Insulating sleeve - ISH 2,5/1,0 - 3002869

<https://www.phoenixcontact.com/de/produkte/3002869>



Insulating sleeve, color: black

Test adapter

Test adapter - PAI-4-FIX-5/6 BU - 3035975

<https://www.phoenixcontact.com/de/produkte/3035975>



4 mm test adapter, for terminal blocks with 5.2 mm and 6.2 mm pitch

Component terminal block - PT 2,5-QUATTRO-DIO/R-L

3210279

<https://www.phoenixcontact.com/de/produkte/3210279>

Test adapter

Test adapter - PAI-4-FIX-5/6 OG - 3035974

<https://www.phoenixcontact.com/de/produkte/3035974>



4 mm test adapter, for terminal blocks with 5.2 mm and 6.2 mm pitch

Test adapter

Test adapter - PAI-4-FIX-5/6 YE - 3035977

<https://www.phoenixcontact.com/de/produkte/3035977>



4 mm test adapter, for terminal blocks with 5.2 mm and 6.2 mm pitch

Component terminal block - PT 2,5-QUATTRO-DIO/R-L

3210279

<https://www.phoenixcontact.com/de/produkte/3210279>

Test adapter

Test adapter - PAI-4-FIX-5/6 RD - 3035976

<https://www.phoenixcontact.com/de/produkte/3035976>



4 mm test adapter, for terminal blocks with 5.2 mm and 6.2 mm pitch

Test adapter

Test adapter - PAI-4-FIX-5/6 GN - 3035978

<https://www.phoenixcontact.com/de/produkte/3035978>



4 mm test adapter, for terminal blocks with 5.2 mm and 6.2 mm pitch

Component terminal block - PT 2,5-QUATTRO-DIO/R-L

3210279

<https://www.phoenixcontact.com/de/produkte/3210279>

Test adapter

Test adapter - PAI-4-FIX-5/6 BK - 3035980

<https://www.phoenixcontact.com/de/produkte/3035980>



4 mm test adapter, for terminal blocks with 5.2 mm and 6.2 mm pitch

Test adapter

Test adapter - PAI-4-FIX-5/6 GY - 3035982

<https://www.phoenixcontact.com/de/produkte/3035982>



4 mm test adapter, for terminal blocks with 5.2 mm and 6.2 mm pitch

Component terminal block - PT 2,5-QUATTRO-DIO/R-L

3210279

<https://www.phoenixcontact.com/de/produkte/3210279>

Test adapter

Test adapter - PAI-4-FIX-5/6 VT - 3035979

<https://www.phoenixcontact.com/de/produkte/3035979>



4 mm test adapter, for terminal blocks with 5.2 mm and 6.2 mm pitch

Test adapter

Test adapter - PAI-4-FIX-5/6 BN - 3035981

<https://www.phoenixcontact.com/de/produkte/3035981>



4 mm test adapter, for terminal blocks with 5.2 mm and 6.2 mm pitch

Component terminal block - PT 2,5-QUATTRO-DIO/R-L

3210279

<https://www.phoenixcontact.com/de/produkte/3210279>

Test adapter

Test adapter - PAI-4-FIX-5/6 WH - 3035983

<https://www.phoenixcontact.com/de/produkte/3035983>

4 mm test adapter, for terminal blocks with 5.2 mm and 6.2 mm pitch



Test plugs

Test plugs - PS-5 - 3030983

<https://www.phoenixcontact.com/de/produkte/3030983>

Test plugs, Modular test plug, color: red



Component terminal block - PT 2,5-QUATTRO-DIO/R-L

3210279

<https://www.phoenixcontact.com/de/produkte/3210279>

Spacer plate

Spacer plate - DP PS-5 - 3036725

<https://www.phoenixcontact.com/de/produkte/3036725>



Spacer plate, length: 22.4 mm, width: 5.2 mm, height: 29 mm, number of positions: 1, color: red

Test plugs

Test plugs - PS-5/2,3MM RD - 3038723

<https://www.phoenixcontact.com/de/produkte/3038723>



Test plugs, color: red

Component terminal block - PT 2,5-QUATTRO-DIO/R-L

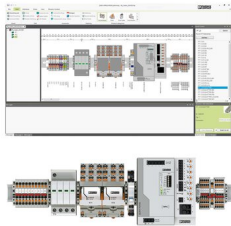
3210279

<https://www.phoenixcontact.com/de/produkte/3210279>

Software

Software - PROJECT COMPLETE - 1050453

<https://www.phoenixcontact.com/de/produkte/1050453>



Intuitive planning and marking software for configuring terminal strips and for professional marking of marking materials for terminal blocks, conductors, cables, devices, and systems. The software is available for download

End clamp

End clamp - CLIPFIX 35 - 3022218

<https://www.phoenixcontact.com/de/produkte/3022218>



Quick mounting end clamp for NS 35/7,5 DIN rail or NS 35/15 DIN rail, with marking option, width: 9.5 mm, color: gray

Component terminal block - PT 2,5-QUATTRO-DIO/R-L

3210279

<https://www.phoenixcontact.com/de/produkte/3210279>

End clamp

End clamp - CLIPFIX 35-5 - 3022276

<https://www.phoenixcontact.com/de/produkte/3022276>

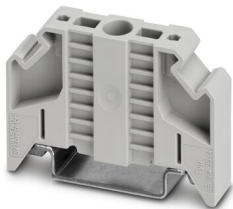


Quick mounting end clamp for NS 35/7,5 DIN rail or NS 35/15 DIN rail, with marking option, with parking option for FBS...5, FBS...6, KSS 5, KSS 6, width: 5.15 mm, color: gray

End clamp

End clamp - E/NS 35 N - 0800886

<https://www.phoenixcontact.com/de/produkte/0800886>



End clamp, width: 9.5 mm, color: gray

Component terminal block - PT 2,5-QUATTRO-DIO/R-L

3210279

<https://www.phoenixcontact.com/de/produkte/3210279>

Crimping pliers

Crimping pliers - CRIMPFOX CENTRUS 6S - 1213144

<https://www.phoenixcontact.com/de/produkte/1213144>



Crimping pliers, for uninsulated and insulated ferrules, DIN 46228 Part 1 and 4, from 0.14 mm² ... 6 mm², also for TWIN ferrules up to 2 x 4 mm², automatic cross section adjustment, lateral insertion, equipped with fall protection

Crimping pliers

Crimping pliers - CRIMPFOX CENTRUS 10S - 1213154

<https://www.phoenixcontact.com/de/produkte/1213154>



Crimping pliers, for uninsulated and insulated ferrules, DIN 46228 Part 1 and 4, from 0.14 mm² ... 10 mm², also for TWIN ferrules up to 2 x 4 mm², automatic cross section adjustment, lateral insertion, equipped with fall protection

Component terminal block - PT 2,5-QUATTRO-DIO/R-L

3210279

<https://www.phoenixcontact.com/de/produkte/3210279>

Crimping pliers

Crimping pliers - CRIMPFOX CENTRUS 6H - 1213146

<https://www.phoenixcontact.com/de/produkte/1213146>



Crimping pliers, for uninsulated and insulated ferrules, DIN 46228 Part 1 and 4, from 0.14 mm² ... 6 mm², also for TWIN ferrules up to 2 x 4 mm², automatic cross section adjustment, lateral insertion, equipped with fall protection

Crimping pliers

Crimping pliers - CRIMPFOX CENTRUS 10H - 1213156

<https://www.phoenixcontact.com/de/produkte/1213156>



Crimping pliers, for uninsulated and insulated ferrules, DIN 46228 Part 1 and 4, from 0.14 mm² ... 10 mm², also for TWIN ferrules up to 2 x 4 mm², automatic cross section adjustment, lateral insertion, equipped with fall protection

Component terminal block - PT 2,5-QUATTRO-DIO/R-L

3210279

<https://www.phoenixcontact.com/de/produkte/3210279>

Crimping pliers

Crimping pliers - CRIMPFOX 10S - 1212045

<https://www.phoenixcontact.com/de/produkte/1212045>



Crimping pliers, for ferrules without insulating collar according to DIN 46228 Part 1 and ferrules with insulating collar according to DIN 46228 Part 4, 0.14 mm² ... 10 mm², unlockable pressure lock, lateral entry

Crimping pliers

Crimping pliers - CRIMPFOX 6H - 1212046

<https://www.phoenixcontact.com/de/produkte/1212046>



Crimping pliers, for ferrules without insulating collar according to DIN 46228 Part 1 and ferrules with insulating collar according to DIN 46228 Part 4, 0.14 mm² ... 6 mm², unlockable pressure lock, lateral entry

Component terminal block - PT 2,5-QUATTRO-DIO/R-L

3210279

<https://www.phoenixcontact.com/de/produkte/3210279>

Crimping pliers

Crimping pliers - CRIMPFOX 2,5-M - 1212719

<https://www.phoenixcontact.com/de/produkte/1212719>



Crimping pliers, for ferrules without insulating collar according to DIN 46228 Part 1 and ferrules with insulating collar according to DIN 46228 Part 4, 0.25 mm² ... 2.5 mm², lateral entry, trapezoidal crimp

Crimping pliers

Crimping pliers - CRIMPFOX 6-M - 1212720

<https://www.phoenixcontact.com/de/produkte/1212720>



Crimping pliers, for ferrules without insulating collar according to DIN 46228 Part 1 and ferrules with insulating collar according to DIN 46228 Part 4, 0.25 mm² ... 6.0 mm², lateral entry, trapezoidal crimp

Component terminal block - PT 2,5-QUATTRO-DIO/R-L

3210279

<https://www.phoenixcontact.com/de/produkte/3210279>

Crimping pliers

Crimping pliers - CRIMPFOX 6 - 1212034

<https://www.phoenixcontact.com/de/produkte/1212034>



Crimping pliers, for ferrules without insulating collar according to DIN 46228 Part 1 and ferrules with insulating collar according to DIN 46228 Part 4, 0.25 mm² ... 6.0 mm², lateral entry, trapezoidal crimp

Crimping pliers

Crimping pliers - CRIMPFOX 6T - 1212037

<https://www.phoenixcontact.com/de/produkte/1212037>



Crimping pliers, for ferrules without insulating collar according to DIN 46228 Part 1 and ferrules with insulating collar according to DIN 46228 Part 4, 0.25 mm² ... 6 mm², lateral entry, trapezoidal crimp

Component terminal block - PT 2,5-QUATTRO-DIO/R-L

3210279

<https://www.phoenixcontact.com/de/produkte/3210279>

Crimping pliers

Crimping pliers - CRIMPFOX 6T-F - 1212038

<https://www.phoenixcontact.com/de/produkte/1212038>



Crimping pliers, for ferrules without insulating collar according to DIN 46228 Part 1 and ferrules with insulating collar according to DIN 46228 Part 4, 0.25 mm² ... 6 mm², front entry, trapezoidal crimp

Crimping pliers

Crimping pliers - CRIMPFOX 6S-F - 1212043

<https://www.phoenixcontact.com/de/produkte/1212043>



Crimping pliers, for ferrules without insulating collar according to DIN 46228 Part 1 and ferrules with insulating collar according to DIN 46228 Part 4, 0.5 mm² ... 6 mm², front entry, square crimp

Component terminal block - PT 2,5-QUATTRO-DIO/R-L



3210279

<https://www.phoenixcontact.com/de/produkte/3210279>

Crimping pliers

Crimping pliers - CRIMPFOX-M - 1212072

<https://www.phoenixcontact.com/de/produkte/1212072>



Basic pliers, for accommodating dies for a wide range of type of contacts

Phoenix Contact 2022 © - all rights reserved

<https://www.phoenixcontact.com>

PHOENIX CONTACT Deutschland GmbH

Flachsmarktstraße 8

D-32825 Blomberg

+49 52 35/3-1 20 00

info@phoenixcontact.de