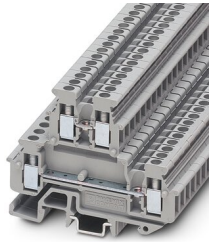


Mini feed-through terminal block - MBKKB 2,5

1414064

<https://www.phoenixcontact.com/de/produkte/1414064>

Please be informed that the data shown in this PDF document is generated from our Online Catalog. Please find the complete data in the user documentation. Our General Terms of Use for Downloads are valid.



Mini feed-through terminal block, nom. voltage: 500 V, nominal current: 24 A, connection method: Screw connection, 1st and 2nd level, Rated cross section: 2.5 mm², cross section: 0.2 mm² - 4 mm², mounting type: NS 15, NS 35/7,5, NS 35/15, color: gray

Your advantages

- Fixed bridges and test sockets can be used on both levels
- Space saving thanks to compact design and mounting option on a 15 mm DIN rail
- Clear arrangement thanks to marking of all terminal points
- Easy potential distribution thanks to standardized plug-in bridges

Mini feed-through terminal block - MBKKB 2,5



1414064

<https://www.phoenixcontact.com/de/produkte/1414064>

Commercial Data

Item number	1414064
Packing unit	50 pc
Minimum order quantity	1 pc
Sales Key	A1 - Reihenklennen
Product Key	BE1264
Catalog Page	Page 560 (C-1-2019)
GTIN	4017918021313
Weight per Piece (including packing)	11,384 g
Weight per Piece (excluding packing)	10,413 g
Customs tariff number	85369010
Country of origin	CN

Mini feed-through terminal block - MBKKB 2,5



1414064

<https://www.phoenixcontact.com/de/produkte/1414064>

Technical Data

Product properties

Product type	Miniature terminal block
Number of connections	4
Number of rows	2
Potentials	2

Insulation characteristics

Overvoltage category	III
Degree of pollution	3

Electrical properties

Rated surge voltage	6 kV
Maximum power dissipation for nominal condition	0.77 W

Connection data

Number of connections per level	2
Nominal cross section	2.5 mm ²

1st and 2nd level

Screw thread	M3
Tightening torque	0.5 ... 0.6 Nm
Stripping length	7 mm
Internal cylindrical gage	A3
Conductor cross section solid	0.2 mm ² ... 4 mm ²
Cross section AWG	24 ... 12
Conductor cross section flexible	0.2 mm ² ... 2.5 mm ²
Conductor cross section, flexible [AWG]	24 ... 14
Flexible conductor cross section flexible (ferrule, w/o plastic sleeve)	0.25 mm ² ... 2.5 mm ²
Flexible conductor cross section (ferrule with plastic sleeve)	0.25 mm ² ... 1.5 mm ²
Cross-section with insertion bridge, rigid	2.5 mm ²
Cross-section with insertion bridge, flexible	2.5 mm ²
2 conductors with same cross section, solid	0.2 mm ² ... 1.5 mm ²
2 conductors with same cross section, flexible	0.2 mm ² ... 1.5 mm ²
2 conductors with same cross section, flexible, with ferrule without plastic sleeve	0.25 mm ² ... 1.5 mm ²
2 conductors with the same cross section, flexible, with TWIN ferrule with plastic sleeve	0.5 mm ² ... 1 mm ²
Nominal current	24 A
Maximum load current	24 A (with 4 mm ² conductor cross section)
Nominal voltage	500 V
Nominal cross section	2.5 mm ²

Mini feed-through terminal block - MBKKB 2,5



1414064

<https://www.phoenixcontact.com/de/produkte/1414064>

Ex data

Rated data (ATEX/IECEX)

ATEX certificate	KEMA 03 ATEX 2082 U
IEC Ex certificate	IECEX KEM 07.0018 U
Identification	□ II 2 GD Ex e II
Operating temperature range	-50 °C ... 110 °C
Ex-certified accessories	1413052 D-MBKKB 2,5 1413065 DP-MBKKB 2,5 1205053 SZS 0,6X3,5 3022218 CLIPFIX 35 1401637 E/MBK
Bridge data	19 A / 2.5 mm ²
Ex temperature increase	34 K (21 A / 2.5 mm ²)
Rated voltage	250 V
for bridging with bridge	275 V
Rated insulation voltage	250 V

Ex level General

Rated current	21 A
Maximum load current	26 A

Ex connection data General

Torque range	0.5 Nm ... 0.6 Nm
Nominal cross section	2.5 mm ²
Rated cross section AWG	14
Connection capacity rigid	0.2 mm ² ... 4 mm ²
Connection capacity AWG	24 ... 12
Connection capacity flexible	0.2 mm ² ... 2.5 mm ²
Connection capacity AWG	24 ... 14
2 conductors with same cross section, solid	0.2 mm ² ... 1.5 mm ²
2 conductors with the same cross-section AWG rigid	24 ... 16
2 conductors with same cross section, stranded	0.2 mm ² ... 1.5 mm ²
2 conductors with the same cross-section AWG flexible	24 ... 16

Ex level Level 1

Contact resistance	0.5 mΩ
--------------------	--------

Ex level Level 2

Contact resistance	0.4 mΩ
--------------------	--------

Dimensions

Width	5.2 mm
End cover width	2.5 mm
Height NS 15	47.5 mm

Mini feed-through terminal block - MBKKB 2,5



1414064

<https://www.phoenixcontact.com/de/produkte/1414064>

Height NS 35/15	55.5 mm
Height NS 35/7,5	48 mm
Height	1.87 "
Length	62 mm

Material specifications

Color	gray
Flammability rating according to UL 94	V2
Insulating material group	I
Insulating material	PA
Temperature index of insulation material (DIN EN 60216-1 (VDE 0304-21))	125 °C
Relative insulation material temperature index (Elec., UL 746 B)	125 °C

Electrical tests

Surge voltage test

Test voltage setpoint	7.3 kV
Result	Test passed

Temperature-rise test

Requirement temperature-rise test	Increase in temperature ≤ 45 K
Result	Test passed
Short-time withstand current 2.5 mm ²	0.3 kA
Result	Test passed

Power-frequency withstand voltage

Test voltage setpoint	1.89 kV
Result	Test passed

Mechanical properties

Mechanical data

Open side panel	Yes
-----------------	-----

Mechanical tests

Mechanical strength

Result	Test passed
--------	-------------

Attachment on the carrier

DIN rail/fixing support	NS 35/NS 15
Test force setpoint	1 N
Result	Test passed

Test for conductor damage and slackening

Rotation speed	10 rpm
Revolutions	135

Mini feed-through terminal block - MBKKB 2,5



1414064

<https://www.phoenixcontact.com/de/produkte/1414064>

Conductor cross section/weight	0.2 mm ² / 0.2 kg
	2.5 mm ² / 0.7 kg
	4 mm ² / 0.9 kg
Result	Test passed

Environmental and real-life conditions

Needle-flame test

Time of exposure	30 s
Result	Test passed

Ambient conditions

Ambient temperature (operation)	-60 °C ... 105 °C (max. short-term operating temperature RTI Elec.)
Ambient temperature (storage/transport)	-25 °C ... 60 °C (for a short time, not exceeding 24 h, -60 °C to +70 °C)
Ambient temperature (assembly)	-5 °C ... 70 °C
Ambient temperature (actuation)	-5 °C ... 70 °C
Permissible humidity (storage/transport)	30 % ... 70 %

Standards and regulations

Connection in acc. with standard	IEC 60947-7-1
----------------------------------	---------------

Mounting

Mounting type	NS 15
	NS 35/7,5
	NS 35/15

Mini feed-through terminal block - MBKKB 2,5

1414064

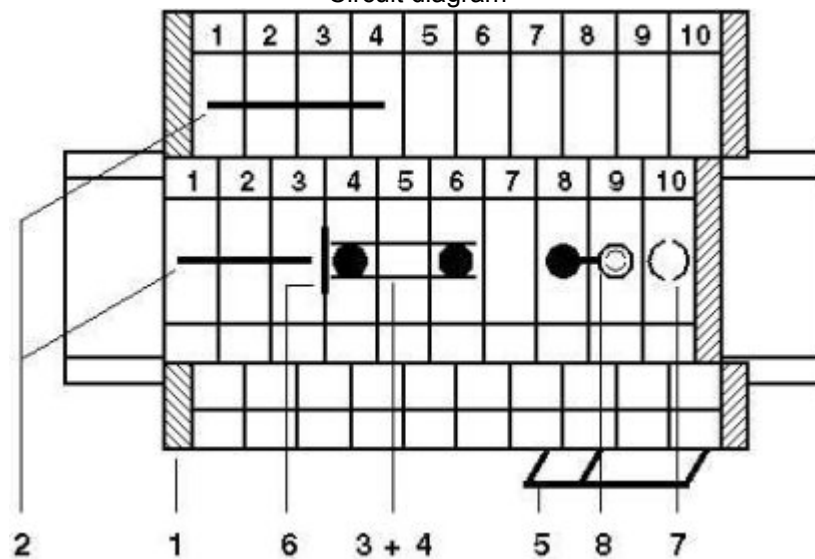
<https://www.phoenixcontact.com/de/produkte/1414064>

Drawings

Circuit diagram



Circuit diagram



- 1 = cover
- 2 = spacer plate
- 3 = fixed bridge
- 4 = insertion bridge
- 5 = separating plate
- 6 = test plug sockets, for test connection with test plug MPS or adapter plug RPS
- 7 = test plug sockets, insulated, can only be used for FBRNI

Mini feed-through terminal block - MBKKB 2,5



1414064

<https://www.phoenixcontact.com/de/produkte/1414064>

Approvals

DNV Approval ID: TAE00001CT				
	Nominal Voltage U_N	Nominal Current I_N	Cross Section AWG	Cross Section mm^2
			-	-

CSA Approval ID: 13631				
	Nominal Voltage U_N	Nominal Current I_N	Cross Section AWG	Cross Section mm^2
	300 V	20 A	28 - 12	-

cULus Recognized Approval ID: E60425				
	Nominal Voltage U_N	Nominal Current I_N	Cross Section AWG	Cross Section mm^2
Use group B				
	300 V	20 A	30 - 12	-
Use group C				
	300 V	20 A	30 - 12	-

ATEX Approval ID: KEMA 03ATEX2082 U				
---	--	--	--	--

EAC Ex Approval ID: RU C-DE.HA91.B.00066				
--	--	--	--	--

IECEx Approval ID: IECEx KEM 07.0018U				
---	--	--	--	--

CCC Approval ID: 2020322313000629				
---	--	--	--	--

NEPSI Approval ID: GYJ20.1196U				
--	--	--	--	--

Mini feed-through terminal block - MBKKB 2,5



1414064

<https://www.phoenixcontact.com/de/produkte/1414064>

Classifications

ECLASS

ECLASS-9.0	27141120
ECLASS-10.0.1	27141120
ECLASS-11.0	27141120

ETIM

ETIM 8.0	EC000897
----------	----------

UNSPSC

UNSPSC 21.0	39121400
-------------	----------

Mini feed-through terminal block - MBKKB 2,5



1414064

<https://www.phoenixcontact.com/de/produkte/1414064>

Environmental Product Compliance

China RoHS	Environmentally friendly use period: unlimited = EFUP-e
	No hazardous substances above threshold values

Mini feed-through terminal block - MBKKB 2,5

1414064

<https://www.phoenixcontact.com/de/produkte/1414064>

Accessories

 Note: Applying some accessories below might limit this product.


Fixed bridge

Fixed bridge - FBRNI 2-5 N - 3000175

<https://www.phoenixcontact.com/de/produkte/3000175>



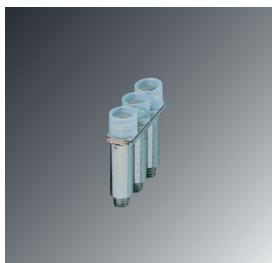
Fixed bridge, pitch: 5 mm, color: silver

 Max. current carrying capacity: 22 A

Fixed bridge

Fixed bridge - FBRNI 3-5 N - 3000162

<https://www.phoenixcontact.com/de/produkte/3000162>



Fixed bridge, pitch: 5 mm, color: silver

 Max. current carrying capacity: 22 A

Mini feed-through terminal block - MBKKB 2,5

1414064

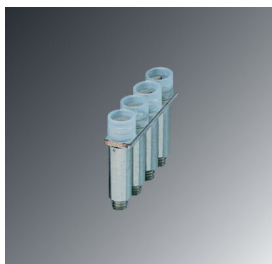
<https://www.phoenixcontact.com/de/produkte/1414064>




Fixed bridge

Fixed bridge - FBRNI 4-5 N - 3000159

<https://www.phoenixcontact.com/de/produkte/3000159>



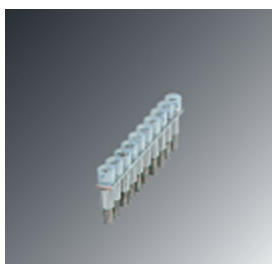
Fixed bridge, pitch: 5 mm, color: silver

 Max. current carrying capacity: 22 A


Fixed bridge

Fixed bridge - FBRNI 10-5 N - 2770639

<https://www.phoenixcontact.com/de/produkte/2770639>



Fixed bridge, pitch: 5.2 mm, color: silver

 Max. current carrying capacity: 22 A

Mini feed-through terminal block - MBKKB 2,5

1414064

<https://www.phoenixcontact.com/de/produkte/1414064>




Fixed bridge

Fixed bridge - FBRNI 20-5 N - 3000609

<https://www.phoenixcontact.com/de/produkte/3000609>



Fixed bridge, color: silver

 Max. current carrying capacity: 22 A


Insertion bridge

Insertion bridge - EB 2- 5 - 1401158

<https://www.phoenixcontact.com/de/produkte/1401158>



Insertion bridge, pitch: 5 mm, color: gray

 Max. current carrying capacity: 20 A

Mini feed-through terminal block - MBKKB 2,5

1414064

<https://www.phoenixcontact.com/de/produkte/1414064>




Insertion bridge

Insertion bridge - EB 3- 5 - 1401145

<https://www.phoenixcontact.com/de/produkte/1401145>

Insertion bridge, pitch: 5 mm, color: gray



 Max. current carrying capacity: 20 A


Insertion bridge

Insertion bridge - EB 10- 5 - 1401132

<https://www.phoenixcontact.com/de/produkte/1401132>

Insertion bridge, pitch: 5.2 mm, color: gray



 Max. current carrying capacity: 20 A

Mini feed-through terminal block - MBKKB 2,5

1414064

<https://www.phoenixcontact.com/de/produkte/1414064>

Switching jumper

Switching jumper - SBRN 2-7 - 1413230

<https://www.phoenixcontact.com/de/produkte/1413230>

Switching jumper, pitch: 7 mm, color: silver



Spacer plate

Spacer plate - DP-MBKKB 2,5 - 1413065

<https://www.phoenixcontact.com/de/produkte/1413065>

Spacer plate, length: 62 mm, width: 2.5 mm, color: gray



Mini feed-through terminal block - MBKKB 2,5

1414064

<https://www.phoenixcontact.com/de/produkte/1414064>

DIN rail, unperforated

DIN rail, unperforated - NS 15 UNPERF 2000MM VPE 10 - 1401695

<https://www.phoenixcontact.com/de/produkte/1401695>

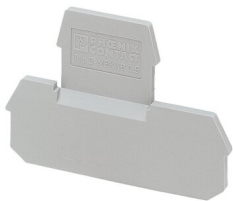


DIN rail, unperforated, acc. to EN 60715, material: Steel, galvanized, passivated with a thick layer, Standard profile, color: silver, Pack of 10 (20 m)

End cover

End cover - D-MBKKB 2,5 - 1413052

<https://www.phoenixcontact.com/de/produkte/1413052>



End cover, length: 62 mm, width: 5 mm, height: 40 mm, color: gray

Mini feed-through terminal block - MBKKB 2,5

1414064

<https://www.phoenixcontact.com/de/produkte/1414064>



DIN rail perforated

DIN rail perforated - NS 15 PERF 2000MM VPE 10 - 1401682

<https://www.phoenixcontact.com/de/produkte/1401682>



DIN rail perforated, acc. to EN 60715, material: Steel, galvanized, passivated with a thick layer, Standard profile, color: silver, Pack of 10 (20 m)

Fixed bridge

Fixed bridge - FB-150

METER - 0201595

<https://www.phoenixcontact.com/de/produkte/0201595>



Cross connection rail, for fixed bridging of identical inputs and outputs, made of Cu, nickel-plated, 1 m long

Mini feed-through terminal block - MBKKB 2,5

1414064

<https://www.phoenixcontact.com/de/produkte/1414064>



DIN rail perforated

DIN rail perforated - NS 15 AL PERF 2000MM VPE 10 - 1401763

<https://www.phoenixcontact.com/de/produkte/1401763>



DIN rail perforated, acc. to EN 60715, material: Aluminum, uncoated, Standard profile, color: silver, Pack of 10 (20 m)

Reducing plug

Reducing plug - RPS - 0201647

<https://www.phoenixcontact.com/de/produkte/0201647>



Reducing plug, color: gray

Mini feed-through terminal block - MBKKB 2,5

1414064

<https://www.phoenixcontact.com/de/produkte/1414064>



DIN rail perforated

DIN rail perforated - NS 15 WH PERF 2000MM-VPE 10 - 1204096

<https://www.phoenixcontact.com/de/produkte/1204096>



DIN rail perforated, acc. to EN 60715, material: Steel, Galvanized, white passivated, Standard profile, color: silver, Pack of 10 (20 m)

Separating plate

Separating plate - TS-KK 3 SO - 2778534

<https://www.phoenixcontact.com/de/produkte/2778534>



Separating plate, width: 0.5 mm, color: gray

Mini feed-through terminal block - MBKKB 2,5

1414064

<https://www.phoenixcontact.com/de/produkte/1414064>



DIN rail perforated

DIN rail perforated - NS 35/ 7,5 PERF 2000MM - 0801733

<https://www.phoenixcontact.com/de/produkte/0801733>



DIN rail perforated, acc. to EN 60715, material: Steel, galvanized, passivated with a thick layer, Standard profile, color: silver, Pack of 25 (50 m)

DIN rail, unperforated

DIN rail, unperforated - NS 35/ 7,5 UNPERF 2000MM - 0801681

<https://www.phoenixcontact.com/de/produkte/0801681>



DIN rail, unperforated, acc. to EN 60715, material: Steel, galvanized, passivated with a thick layer, Standard profile, color: silver, Pack of 25 (50 m)

Mini feed-through terminal block - MBKKB 2,5

1414064

<https://www.phoenixcontact.com/de/produkte/1414064>

Screwdriver

Screwdriver - SZS 0,6X3,5 - 1205053

<https://www.phoenixcontact.com/de/produkte/1205053>



Actuation tool, for ST terminal blocks, insulated, also suitable for use as a bladed screwdriver, size: 0.6 x 3.5 x 100 mm, 2-component grip, with non-slip grip

DIN rail perforated

DIN rail perforated - NS 35/ 7,5 WH PERF 2000MM - 1204119

<https://www.phoenixcontact.com/de/produkte/1204119>



DIN rail perforated, acc. to EN 60715, material: Steel, Galvanized, white passivated, Standard profile, color: silver, Pack of 25 (50 m)

Mini feed-through terminal block - MBKKB 2,5

1414064

<https://www.phoenixcontact.com/de/produkte/1414064>



DIN rail, unperforated

DIN rail, unperforated - NS 35/ 7,5 WH UNPERF 2000MM-VPE 10 - 1204122

<https://www.phoenixcontact.com/de/produkte/1204122>



DIN rail, unperforated, acc. to EN 60715, material: Steel, Galvanized, white passivated, Standard profile, color: silver, Pack of 10 (20 m)

DIN rail, unperforated

DIN rail, unperforated - NS 35/ 7,5 AL UNPERF 2000MM - 0801704

<https://www.phoenixcontact.com/de/produkte/0801704>



DIN rail, unperforated, acc. to EN 60715, material: Aluminum, uncoated, Standard profile, color: silver, Pack of 25 (50 m)

Mini feed-through terminal block - MBKKB 2,5

1414064

<https://www.phoenixcontact.com/de/produkte/1414064>



DIN rail perforated

DIN rail perforated - NS 35/ 7,5 ZN PERF 2000MM - 1206421

<https://www.phoenixcontact.com/de/produkte/1206421>



DIN rail perforated, acc. to EN 60715, material: Steel, galvanized, Standard profile, color: silver, Pack of 25 (50 m)

DIN rail, unperforated

DIN rail, unperforated - NS 35/ 7,5 ZN UNPERF 2000MM - 1206434

<https://www.phoenixcontact.com/de/produkte/1206434>



DIN rail, unperforated, acc. to EN 60715, material: Steel, galvanized, Standard profile, color: silver, Pack of 25 (50 m)

Mini feed-through terminal block - MBKKB 2,5

1414064

<https://www.phoenixcontact.com/de/produkte/1414064>



DIN rail, unperforated

DIN rail, unperforated - NS 35/ 7,5 CU UNPERF 2000MM-VPE 10 - 0801762

<https://www.phoenixcontact.com/de/produkte/0801762>



DIN rail, unperforated, acc. to EN 60715, material: Copper, uncoated, Standard profile, color: copper-colored, Pack of 10 (20 m)

End cap

End cap - NS 35/ 7,5 CAP - 1206560

<https://www.phoenixcontact.com/de/produkte/1206560>

DIN rail end piece, for DIN rail NS 35/7.5



Mini feed-through terminal block - MBKKB 2,5

1414064

<https://www.phoenixcontact.com/de/produkte/1414064>

DIN rail perforated

DIN rail perforated - NS 35/15 PERF 2000MM - 1201730

<https://www.phoenixcontact.com/de/produkte/1201730>



DIN rail perforated, similar to EN 60715, material: Steel, galvanized, passivated with a thick layer, Standard profile, color: silver, Pack of 25 (50 m)

DIN rail, unperforated

DIN rail, unperforated - NS 35/15 UNPERF 2000MM - 1201714

<https://www.phoenixcontact.com/de/produkte/1201714>



DIN rail, unperforated, similar to EN 60715, material: Steel, galvanized, passivated with a thick layer, Standard profile, color: silver, Pack of 25 (50 m)

Mini feed-through terminal block - MBKKB 2,5

1414064

<https://www.phoenixcontact.com/de/produkte/1414064>

DIN rail perforated

DIN rail perforated - NS 35/15 WH PERF 2000MM - 0806602

<https://www.phoenixcontact.com/de/produkte/0806602>



DIN rail perforated, similar to EN 60715, material: Steel, Galvanized, white passivated, Standard profile, color: white, Pack of 25 (50 m)

DIN rail, unperforated

DIN rail, unperforated - NS 35/15 WH UNPERF 2000MM-VPE 10 - 1204135

<https://www.phoenixcontact.com/de/produkte/1204135>



DIN rail, unperforated, similar to EN 60715, material: Steel, Galvanized, white passivated, Standard profile, color: silver, Pack of 10 (20 m)

Mini feed-through terminal block - MBKKB 2,5

1414064

<https://www.phoenixcontact.com/de/produkte/1414064>



DIN rail, unperforated

DIN rail, unperforated - NS 35/15 AL UNPERF 2000MM - 1201756

<https://www.phoenixcontact.com/de/produkte/1201756>



DIN rail, unperforated, similar to EN 60715, material: Aluminum, uncoated, Standard profile, color: silver

DIN rail perforated

DIN rail perforated - NS 35/15 ZN PERF 2000MM - 1206599

<https://www.phoenixcontact.com/de/produkte/1206599>



DIN rail perforated, similar to EN 60715, material: Steel, galvanized, Standard profile, color: silver, Pack of 25 (50 m)

Mini feed-through terminal block - MBKKB 2,5

1414064

<https://www.phoenixcontact.com/de/produkte/1414064>



DIN rail, unperforated

DIN rail, unperforated - NS 35/15 ZN UNPERF 2000MM - 1206586

<https://www.phoenixcontact.com/de/produkte/1206586>



DIN rail, unperforated, similar to EN 60715, material: Steel, galvanized, Standard profile, color: silver, Pack of 25 (50 m)

DIN rail, unperforated

DIN rail, unperforated - NS 35/15 CU UNPERF 2000MM-VPE 10 - 1201895

<https://www.phoenixcontact.com/de/produkte/1201895>



DIN rail, unperforated, similar to EN 60715, material: Copper, uncoated, Standard profile, color: copper-colored, Pack of 10 (20 m)

Mini feed-through terminal block - MBKKB 2,5

1414064

<https://www.phoenixcontact.com/de/produkte/1414064>



End cap

End cap - NS 35/15 CAP - 1206573

<https://www.phoenixcontact.com/de/produkte/1206573>

DIN rail end piece, for DIN rail NS 35/15



DIN rail, unperforated

DIN rail, unperforated - NS 35/15-2,3 UNPERF 2000MM-VPE 10 - 1201798

<https://www.phoenixcontact.com/de/produkte/1201798>



DIN rail, unperforated, acc. to EN 60715, material: Steel, galvanized, passivated with a thick layer, Standard profile 2.3 mm, color: silver, Pack of 10 (20 m)

Mini feed-through terminal block - MBKKB 2,5

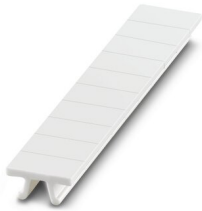
1414064

<https://www.phoenixcontact.com/de/produkte/1414064>

Zack marker strip

Zack marker strip - ZB 5 :UNBEDRUCKT - 1050004

<https://www.phoenixcontact.com/de/produkte/1050004>



Zack marker strip, Strip, white, unlabeled, can be labeled with: PLOTMARK, CMS-P1-PLOTTER, mounting type: snapped, for terminal block width: 5.2 mm, lettering field size: 5.1 x 10.5 mm, Number of individual labels: 10

Zack marker strip

Zack marker strip - ZB 5 CUS - 0824962

<https://www.phoenixcontact.com/de/produkte/0824962>



Zack marker strip, can be ordered: Strip, white, labeled according to customer specifications, mounting type: snap into tall marker groove, for terminal block width: 5.2 mm, lettering field size: 5.15 x 10.5 mm, Number of individual labels: 10

Mini feed-through terminal block - MBKKB 2,5

1414064

<https://www.phoenixcontact.com/de/produkte/1414064>

Zack marker strip

Zack marker strip - ZB 5,LGS:FORTL.ZAHLEN - 1050017

<https://www.phoenixcontact.com/de/produkte/1050017>

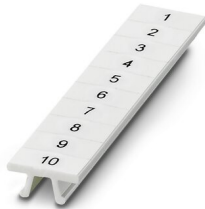


Zack marker strip, Strip, white, labeled, printed horizontally: consecutive numbers 1 ... 10, 11 ... 20, etc. up to 491 ... 500, mounting type: snapped, for terminal block width: 5.2 mm, lettering field size: 5.15 x 10.5 mm, Number of individual labels: 10

Zack marker strip

Zack marker strip - ZB 5,QR:FORTL.ZAHLEN - 1050020

<https://www.phoenixcontact.com/de/produkte/1050020>



Zack marker strip, white, Printed vertically: consecutive numbers 1 ... 10, 11 ... 20, etc. up to 491 ... 500, mounting type: snapped, for terminal block width: 5.2 mm, lettering field size: 5.15 x 10.5 mm

Mini feed-through terminal block - MBKKB 2,5

1414064

<https://www.phoenixcontact.com/de/produkte/1414064>

Zack marker strip

Zack marker strip - ZB 5,LGS:GLEICHE ZAHLEN - 1050033

<https://www.phoenixcontact.com/de/produkte/1050033>



Zack marker strip, Strip, white, labeled, can be labeled with: CMS-P1-PLOTTER, printed horizontally: Identical numbers 1 or 2, etc. up to 100, mounting type: snapped, for terminal block width: 5.2 mm, lettering field size: 5.15 x 10.5 mm, Number of individual labels: 10

Zack marker strip

Zack marker strip - ZB 5,LGS:L1-N,PE - 1050415

<https://www.phoenixcontact.com/de/produkte/1050415>



Zack marker strip, Strip, white, labeled, horizontal: L1, L2, L3, N, PE, L1, L2, L3, N, PE, mounting type: snapped, for terminal block width: 5.2 mm, lettering field size: 5.15 x 10.5 mm, Number of individual labels: 10

Mini feed-through terminal block - MBKKB 2,5

1414064

<https://www.phoenixcontact.com/de/produkte/1414064>

Marker for terminal blocks

Marker for terminal blocks - UC-TM 5 - 0818108

<https://www.phoenixcontact.com/de/produkte/0818108>



Marker for terminal blocks, Sheet, white, unlabeled, can be labeled with: BLUEMARK ID COLOR, BLUEMARK ID, BLUEMARK CLED, PLOTMARK, CMS-P1-PLOTTER, mounting type: snapped, for terminal block width: 5.2 mm, lettering field size: 10.5 x 4.6 mm, Number of individual labels: 96

Marker for terminal blocks

Marker for terminal blocks - UC-TM 5 CUS - 0824581

<https://www.phoenixcontact.com/de/produkte/0824581>



Marker for terminal blocks, can be ordered: by sheet, white, labeled according to customer specifications, mounting type: snap into tall marker groove, for terminal block width: 5.2 mm, lettering field size: 10.5 x 4.6 mm, Number of individual labels: 96

Mini feed-through terminal block - MBKKB 2,5

1414064

<https://www.phoenixcontact.com/de/produkte/1414064>

Marker for terminal blocks

Marker for terminal blocks - UCT-TM 5 - 0828734

<https://www.phoenixcontact.com/de/produkte/0828734>



Marker for terminal blocks, Sheet, white, unlabeled, can be labeled with: TOPMARK NEO, TOPMARK LASER, BLUEMARK ID COLOR, BLUEMARK ID, BLUEMARK CLED, THERMOMARK PRIME, THERMOMARK CARD 2.0, THERMOMARK CARD, mounting type: snapped, for terminal block width: 5.2 mm, lettering field size: 4.6 x 10.5 mm, Number of individual labels: 72

Marker for terminal blocks

Marker for terminal blocks - UCT-TM 5 CUS - 0829595

<https://www.phoenixcontact.com/de/produkte/0829595>



Marker for terminal blocks, can be ordered: by sheet, white, labeled according to customer specifications, mounting type: snap into tall marker groove, for terminal block width: 5.2 mm, lettering field size: 4.6 x 10.5 mm, Number of individual labels: 72

Mini feed-through terminal block - MBKKB 2,5

1414064

<https://www.phoenixcontact.com/de/produkte/1414064>

End clamp

End clamp - CLIPFIX 35 - 3022218

<https://www.phoenixcontact.com/de/produkte/3022218>



Quick mounting end clamp for NS 35/7,5 DIN rail or NS 35/15 DIN rail, with marking option, width: 9.5 mm, color: gray

End clamp

End clamp - CLIPFIX 35-5 - 3022276

<https://www.phoenixcontact.com/de/produkte/3022276>



Quick mounting end clamp for NS 35/7,5 DIN rail or NS 35/15 DIN rail, with marking option, with parking option for FBS...5, FBS...6, KSS 5, KSS 6, width: 5.15 mm, color: gray

Mini feed-through terminal block - MBKKB 2,5

1414064

<https://www.phoenixcontact.com/de/produkte/1414064>

End clamp

End clamp - E/NS 35 N - 0800886

<https://www.phoenixcontact.com/de/produkte/0800886>

End clamp, width: 9.5 mm, color: gray

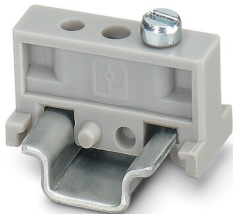


End clamp

End clamp - E/MBK - 1401637

<https://www.phoenixcontact.com/de/produkte/1401637>

End clamp, width: 6.2 mm, color: gray



Mini feed-through terminal block - MBKKB 2,5

1414064

<https://www.phoenixcontact.com/de/produkte/1414064>

End clamp

End clamp - E/MK - 1421633

<https://www.phoenixcontact.com/de/produkte/1421633>

End clamp, width: 6.2 mm, color: gray

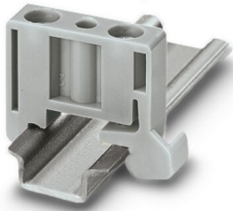


End clamp

End clamp - E/MK 1 - 1421659

<https://www.phoenixcontact.com/de/produkte/1421659>

End clamp width: 6 mm, color: gray



Mini feed-through terminal block - MBKKB 2,5

1414064

<https://www.phoenixcontact.com/de/produkte/1414064>



Female test connector

Female test connector - PSBJ 3/13/4 - 0201304

<https://www.phoenixcontact.com/de/produkte/0201304>



Female test connector, color: silver

Female test connector

Female test connector - PSB 3/10/4 - 0601292

<https://www.phoenixcontact.com/de/produkte/0601292>



Female test connector, color: silver

Mini feed-through terminal block - MBKKB 2,5

1414064

<https://www.phoenixcontact.com/de/produkte/1414064>

End clamp

End clamp - E/UK - 1201442

<https://www.phoenixcontact.com/de/produkte/1201442>

End clamp, material: PA, color: gray, Mounting on a DIN rail NS 32 or NS 35



End clamp

End clamp - E/UK 1 - 1201413

<https://www.phoenixcontact.com/de/produkte/1201413>

End clamps, for supporting the ends of double-level and three-level terminal blocks, width: 10 mm, color: gray



Phoenix Contact 2022 © - all rights reserved
<https://www.phoenixcontact.com>

PHOENIX CONTACT Deutschland GmbH
Flachsmarktstraße 8
D-32825 Blomberg
+49 52 35/3-1 20 00
info@phoenixcontact.de