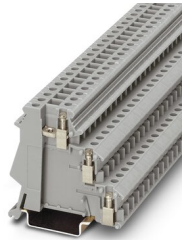


Sensor/actuator terminal block - DIK 1,5

2715966

<https://www.phoenixcontact.com/de/produkte/2715966>

Please be informed that the data shown in this PDF document is generated from our Online Catalog. Please find the complete data in the user documentation. Our General Terms of Use for Downloads are valid.



Sensor/actuator terminal block, nom. voltage: 250 V, nominal current: 24 A, connection method: Screw connection, 1st, 2nd and 3rd level, Rated cross section: 2.5 mm², cross section: 0.2 mm² - 4 mm², mounting type: NS 35/7,5, NS 35/15, color: gray

Your advantages

- The upper level contains the feed-through connections for the signal cable which can be labeled
- The lower terminal points can be bridged using an insertion bridge that can be separated
- The two lower terminal points supply potential to the initiator

Sensor/actuator terminal block - DIK 1,5



2715966

<https://www.phoenixcontact.com/de/produkte/2715966>

Commercial Data

Item number	2715966
Packing unit	50 pc
Minimum order quantity	1 pc
Sales Key	A1 - Reihenklemmen
Product Key	BE1217
Catalog Page	Page 480 (C-1-2019)
GTIN	4017918061715
Weight per Piece (including packing)	12,396 g
Weight per Piece (excluding packing)	11,221 g
Customs tariff number	85369010
Country of origin	PL

Sensor/actuator terminal block - DIK 1,5



2715966

<https://www.phoenixcontact.com/de/produkte/2715966>

Technical Data

Product properties

Product type	Sensor/actuator terminal block
Number of connections	3
Number of rows	3
Potentials	3

Insulation characteristics

Overvoltage category	III
Degree of pollution	3

Electrical properties

Rated surge voltage	4 kV
Maximum power dissipation for nominal condition	0.77 W

Connection data

Number of connections per level	1
Nominal cross section	2.5 mm ²

1st, 2nd and 3rd level

Screw thread	M3
Tightening torque	0.5 ... 0.6 Nm
Stripping length	8 mm
Internal cylindrical gage	A3
Conductor cross section solid	0.2 mm ² ... 4 mm ²
Cross section AWG	24 ... 12
Conductor cross section flexible	0.2 mm ² ... 2.5 mm ²
Conductor cross section, flexible [AWG]	24 ... 14
Flexible conductor cross section flexible (ferrule, w/o plastic sleeve)	0.25 mm ² ... 2.5 mm ²
Flexible conductor cross section (ferrule with plastic sleeve)	0.25 mm ² ... 2.5 mm ²
Cross-section with insertion bridge, rigid	4 mm ²
Cross-section with insertion bridge, flexible	2.5 mm ²
2 conductors with same cross section, solid	0.2 mm ² ... 1 mm ²
2 conductors with same cross section, flexible	0.2 mm ² ... 1 mm ²
2 conductors with same cross section, flexible, with ferrule without plastic sleeve	0.25 mm ² ... 1 mm ²
2 conductors with the same cross section, flexible, with TWIN ferrule with plastic sleeve	0.5 mm ² ... 1 mm ²
Nominal current	24 A
Maximum load current	26 A (with 4 mm ² conductor cross section)
Nominal voltage	250 V
Nominal cross section	2.5 mm ²

Sensor/actuator terminal block - DIK 1,5



2715966

<https://www.phoenixcontact.com/de/produkte/2715966>

Dimensions

Width	6.2 mm
Height NS 35/15	62 mm
Height NS 35/7,5	54.5 mm
Height	2.146 "
Length	55 mm

Material specifications

Color	gray
Flammability rating according to UL 94	V2
Insulating material group	I
Insulating material	PA
Static insulating material application in cold	-40 °C
Temperature index of insulation material (DIN EN 60216-1 (VDE 0304-21))	125 °C
Relative insulation material temperature index (Elec., UL 746 B)	125 °C

Electrical tests

Surge voltage test

Test voltage setpoint	4.8 kV
Result	Test passed

Temperature-rise test

Requirement temperature-rise test	Increase in temperature ≤ 45 K
Result	Test passed
Short-time withstand current 2.5 mm ²	0.3 kA
Short-time withstand current 4 mm ²	0.48 kA
Result	Test passed

Power-frequency withstand voltage

Test voltage setpoint	1.5 kV
Result	Test passed

Mechanical properties

Mechanical data

Open side panel	No
-----------------	----

Mechanical tests

Mechanical strength

Result	Test passed
--------	-------------

Attachment on the carrier

DIN rail/fixing support	NS 35
Test force setpoint	1 N

Sensor/actuator terminal block - DIK 1,5



2715966

<https://www.phoenixcontact.com/de/produkte/2715966>

Result	Test passed
--------	-------------

Test for conductor damage and slackening

Rotation speed	10 rpm
Revolutions	135
Conductor cross section/weight	0.2 mm ² / 0.2 kg
	2.5 mm ² / 0.7 kg
	4 mm ² / 0.9 kg
Result	Test passed

Environmental and real-life conditions

Needle-flame test

Time of exposure	30 s
Result	Test passed

Ambient conditions

Ambient temperature (operation)	-60 °C ... 105 °C (max. short-term operating temperature RTI Elec.)
Ambient temperature (storage/transport)	-25 °C ... 60 °C (for a short time, not exceeding 24 h, -60 °C to +70 °C)
Ambient temperature (assembly)	-5 °C ... 70 °C
Ambient temperature (actuation)	-5 °C ... 70 °C
Permissible humidity (storage/transport)	30 % ... 70 %

Standards and regulations

Connection in acc. with standard	IEC 60947-7-1
----------------------------------	---------------

Mounting

Mounting type	NS 35/7,5
	NS 35/15

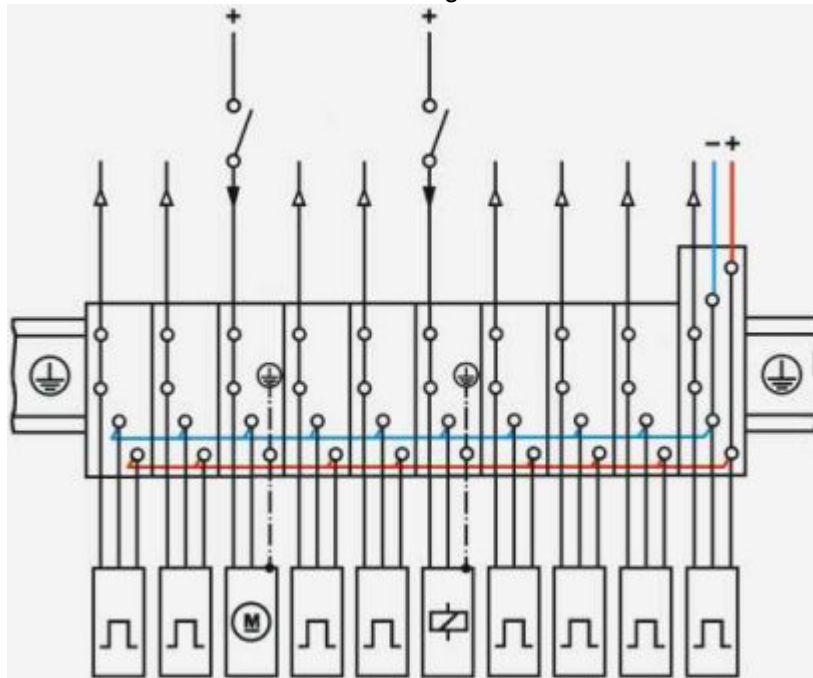
Sensor/actuator terminal block - DIK 1,5

2715966

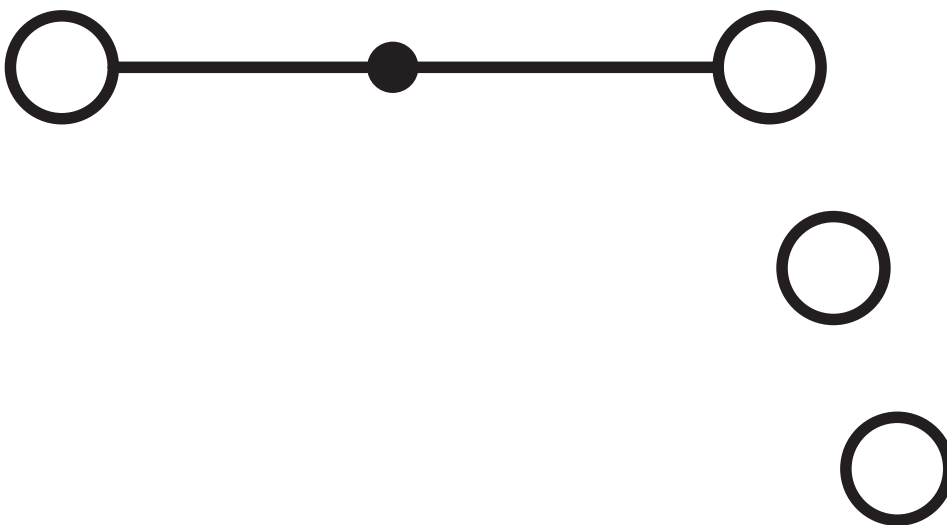
<https://www.phoenixcontact.com/de/produkte/2715966>

Drawings

Circuit diagram



Circuit diagram




Sensor/actuator terminal block - DIK 1,5





2715966

<https://www.phoenixcontact.com/de/produkte/2715966>

Approvals

 CSA Approval ID: 13631				
	Nominal Voltage U_N	Nominal Current I_N	Cross Section AWG	Cross Section mm^2
	300 V	15 A	28 - 14	-

 EAC Approval ID: RU C-DE.BL08.B.00534				
---	--	--	--	--

 cULus Recognized Approval ID: E60425				
	Nominal Voltage U_N	Nominal Current I_N	Cross Section AWG	Cross Section mm^2
Use group B				
	300 V	15 A	30 - 14	-
PE connection			30 - 14	-
Use group C				
	150 V	15 A	30 - 14	-
PE connection			30 - 14	-
Use group D				
	300 V	10 A	30 - 14	-

Sensor/actuator terminal block - DIK 1,5



2715966

<https://www.phoenixcontact.com/de/produkte/2715966>

Classifications

ECLASS

ECLASS-9.0	27141128
ECLASS-10.0.1	27141128
ECLASS-11.0	27141128

ETIM

ETIM 8.0	EC000900
----------	----------

UNSPSC

UNSPSC 21.0	39121400
-------------	----------

Sensor/actuator terminal block - DIK 1,5



2715966

<https://www.phoenixcontact.com/de/produkte/2715966>

Environmental Product Compliance

China RoHS	Environmentally friendly use period: unlimited = EFUP-e
	No hazardous substances above threshold values

Sensor/actuator terminal block - DIK 1,5

2715966

<https://www.phoenixcontact.com/de/produkte/2715966>

Accessories

 Note: Applying some accessories below might limit this product.

Fixed bridge

Fixed bridge - FBI 100- 6 - 0201650

<https://www.phoenixcontact.com/de/produkte/0201650>



Fixed bridge, pitch: 6.2 mm, color: silver

Fixed bridge

Fixed bridge - FBI 10- 6 - 0203250

<https://www.phoenixcontact.com/de/produkte/0203250>



Fixed bridge, pitch: 6.2 mm, color: silver

 Max. current carrying capacity: 24 A

Sensor/actuator terminal block - DIK 1,5

2715966

<https://www.phoenixcontact.com/de/produkte/2715966>

Fixed bridge

Fixed bridge - FBI 20- 6 - 0201867

<https://www.phoenixcontact.com/de/produkte/0201867>



Fixed bridge, pitch: 6.2 mm, color: silver

Insertion bridge

Insertion bridge - EB 80- DIK RD - 2715953

<https://www.phoenixcontact.com/de/produkte/2715953>



Insertion bridge, pitch: 6.2 mm, color: red

 Max. current carrying capacity: 24 A

Sensor/actuator terminal block - DIK 1,5

2715966

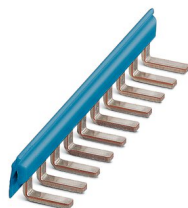
<https://www.phoenixcontact.com/de/produkte/2715966>



Insertion bridge

Insertion bridge - EB 80- DIK BU - 2715940

<https://www.phoenixcontact.com/de/produkte/2715940>



Insertion bridge, pitch: 6.2 mm, color: blue

 Max. current carrying capacity: 24 A

Insertion bridge

Insertion bridge - EB 10- DIK RD - 2716774

<https://www.phoenixcontact.com/de/produkte/2716774>



Insertion bridge, pitch: 6.15 mm, color: red

Sensor/actuator terminal block - DIK 1,5

2715966

<https://www.phoenixcontact.com/de/produkte/2715966>

Insertion bridge

Insertion bridge - EB 10- DIK BU - 2716680

<https://www.phoenixcontact.com/de/produkte/2716680>



Insertion bridge, pitch: 6.15 mm, color: blue

Insertion bridge

Insertion bridge - EB 10- DIK GY - 2715937

<https://www.phoenixcontact.com/de/produkte/2715937>



Insertion bridge, pitch: 6.15 mm, color: gray

Sensor/actuator terminal block - DIK 1,5

2715966

<https://www.phoenixcontact.com/de/produkte/2715966>



Insertion bridge

Insertion bridge - EB 80- DIK WH - 2715788

<https://www.phoenixcontact.com/de/produkte/2715788>



Insertion bridge, pitch: 6.15 mm, color: white

Insertion bridge

Insertion bridge - EB 5- DIK BU - 2716677

<https://www.phoenixcontact.com/de/produkte/2716677>



Insertion bridge, pitch: 6.15 mm, color: blue

Sensor/actuator terminal block - DIK 1,5

2715966

<https://www.phoenixcontact.com/de/produkte/2715966>



Insertion bridge

Insertion bridge - EB 4- DIK BU - 2716664

<https://www.phoenixcontact.com/de/produkte/2716664>



Insertion bridge, pitch: 6.15 mm, color: blue

Insertion bridge

Insertion bridge - EB 3- DIK BU - 2716651

<https://www.phoenixcontact.com/de/produkte/2716651>



Insertion bridge, pitch: 6.15 mm, color: blue

Sensor/actuator terminal block - DIK 1,5

2715966

<https://www.phoenixcontact.com/de/produkte/2715966>

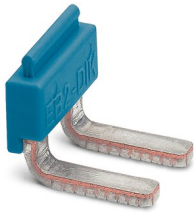


Insertion bridge

Insertion bridge - EB 2- DIK BU - 2716648

<https://www.phoenixcontact.com/de/produkte/2716648>

Insertion bridge, pitch: 6.15 mm, color: blue



Insertion bridge

Insertion bridge - EB 5- DIK RD - 2716761

<https://www.phoenixcontact.com/de/produkte/2716761>

Insertion bridge, pitch: 6.15 mm, color: red



Sensor/actuator terminal block - DIK 1,5

2715966

<https://www.phoenixcontact.com/de/produkte/2715966>



Insertion bridge

Insertion bridge - EB 4- DIK RD - 2716758

<https://www.phoenixcontact.com/de/produkte/2716758>



Insertion bridge, pitch: 6.15 mm, color: red

Insertion bridge

Insertion bridge - EB 3- DIK RD - 2716745

<https://www.phoenixcontact.com/de/produkte/2716745>



Insertion bridge, pitch: 6.15 mm, color: red

Sensor/actuator terminal block - DIK 1,5

2715966

<https://www.phoenixcontact.com/de/produkte/2715966>



Insertion bridge

Insertion bridge - EB 2- DIK RD - 2716693

<https://www.phoenixcontact.com/de/produkte/2716693>

Insertion bridge, pitch: 6.15 mm, color: red



Fixed bridge

Fixed bridge - FB-150

METER - 0201595

<https://www.phoenixcontact.com/de/produkte/0201595>



Cross connection rail, for fixed bridging of identical inputs and outputs, made of Cu, nickel-plated, 1 m long

 Max. current carrying capacity: 26 A

Sensor/actuator terminal block - DIK 1,5

2715966

<https://www.phoenixcontact.com/de/produkte/2715966>

Screw

Screw - ZS-6 - 0201605

<https://www.phoenixcontact.com/de/produkte/0201605>



Screw

Partition plate

Partition plate - ATP-DIKD 1,5 - 1413285

<https://www.phoenixcontact.com/de/produkte/1413285>



Partition plate, length: 83 mm, width: 2 mm, height: 60 mm, color: gray

Sensor/actuator terminal block - DIK 1,5

2715966

<https://www.phoenixcontact.com/de/produkte/2715966>

DIN rail perforated

DIN rail perforated - NS 35/ 7,5 PERF 2000MM - 0801733

<https://www.phoenixcontact.com/de/produkte/0801733>

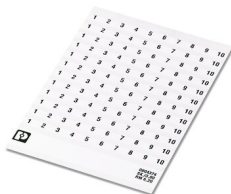


DIN rail perforated, acc. to EN 60715, material: Steel, galvanized, passivated with a thick layer, Standard profile, color: silver, Pack of 25 (50 m)

Marker card

Marker card - SK 6,2/3,8:FORTL.ZAHLEN - 0804374

<https://www.phoenixcontact.com/de/produkte/0804374>



Marker card, white, labeled, horizontal: consecutive numbers 1 ... 10, 11 ... 20, etc. up to 91 ... (99)100, mounting type: adhesive, for terminal block width: 6.2 mm, lettering field size: 6.2 x 3.8 mm

Sensor/actuator terminal block - DIK 1,5

2715966

<https://www.phoenixcontact.com/de/produkte/2715966>

DIN rail, unperforated

DIN rail, unperforated - NS 35/ 7,5 UNPERF 2000MM - 0801681

<https://www.phoenixcontact.com/de/produkte/0801681>



DIN rail, unperforated, acc. to EN 60715, material: Steel, galvanized, passivated with a thick layer, Standard profile, color: silver, Pack of 25 (50 m)

Marker card

Marker card - SBS 6:UNBEDRUCKT - 1007222

<https://www.phoenixcontact.com/de/produkte/1007222>



Marker card, Card, white, unlabeled, can be labeled with: Marker pen, mounting type: snapped, snap into flat marker groove, for terminal block width: 6 mm, lettering field size: 6 x 6.1 mm, Number of individual labels: 250

Sensor/actuator terminal block - DIK 1,5

2715966

<https://www.phoenixcontact.com/de/produkte/2715966>

DIN rail perforated

DIN rail perforated - NS 35/ 7,5 WH PERF 2000MM - 1204119

<https://www.phoenixcontact.com/de/produkte/1204119>



DIN rail perforated, acc. to EN 60715, material: Steel, Galvanized, white passivated, Standard profile, color: silver, Pack of 25 (50 m)

DIN rail, unperforated

DIN rail, unperforated - NS 35/ 7,5 WH UNPERF 2000MM-VPE 10 - 1204122

<https://www.phoenixcontact.com/de/produkte/1204122>



DIN rail, unperforated, acc. to EN 60715, material: Steel, Galvanized, white passivated, Standard profile, color: silver, Pack of 10 (20 m)

Sensor/actuator terminal block - DIK 1,5

2715966

<https://www.phoenixcontact.com/de/produkte/2715966>

DIN rail, unperforated

DIN rail, unperforated - NS 35/ 7,5 AL UNPERF 2000MM - 0801704

<https://www.phoenixcontact.com/de/produkte/0801704>



DIN rail, unperforated, acc. to EN 60715, material: Aluminum, uncoated, Standard profile, color: silver, Pack of 25 (50 m)

DIN rail perforated

DIN rail perforated - NS 35/ 7,5 ZN PERF 2000MM - 1206421

<https://www.phoenixcontact.com/de/produkte/1206421>



DIN rail perforated, acc. to EN 60715, material: Steel, galvanized, Standard profile, color: silver, Pack of 25 (50 m)

Sensor/actuator terminal block - DIK 1,5

2715966

<https://www.phoenixcontact.com/de/produkte/2715966>

DIN rail, unperforated

DIN rail, unperforated - NS 35/ 7,5 ZN UNPERF 2000MM - 1206434

<https://www.phoenixcontact.com/de/produkte/1206434>



DIN rail, unperforated, acc. to EN 60715, material: Steel, galvanized, Standard profile, color: silver, Pack of 25 (50 m)

DIN rail, unperforated

DIN rail, unperforated - NS 35/ 7,5 CU UNPERF 2000MM-VPE 10 - 0801762

<https://www.phoenixcontact.com/de/produkte/0801762>



DIN rail, unperforated, acc. to EN 60715, material: Copper, uncoated, Standard profile, color: copper-colored, Pack of 10 (20 m)

Sensor/actuator terminal block - DIK 1,5

2715966

<https://www.phoenixcontact.com/de/produkte/2715966>



End cap

End cap - NS 35/ 7,5 CAP - 1206560

<https://www.phoenixcontact.com/de/produkte/1206560>

DIN rail end piece, for DIN rail NS 35/7.5



DIN rail perforated

DIN rail perforated - NS 35/15 PERF 2000MM - 1201730

<https://www.phoenixcontact.com/de/produkte/1201730>



DIN rail perforated, similar to EN 60715, material: Steel, galvanized, passivated with a thick layer, Standard profile, color: silver, Pack of 25 (50 m)

Sensor/actuator terminal block - DIK 1,5

2715966

<https://www.phoenixcontact.com/de/produkte/2715966>

DIN rail, unperforated

DIN rail, unperforated - NS 35/15 UNPERF 2000MM - 1201714

<https://www.phoenixcontact.com/de/produkte/1201714>



DIN rail, unperforated, similar to EN 60715, material: Steel, galvanized, passivated with a thick layer, Standard profile, color: silver, Pack of 25 (50 m)

DIN rail perforated

DIN rail perforated - NS 35/15 WH PERF 2000MM - 0806602

<https://www.phoenixcontact.com/de/produkte/0806602>



DIN rail perforated, similar to EN 60715, material: Steel, Galvanized, white passivated, Standard profile, color: white, Pack of 25 (50 m)

Sensor/actuator terminal block - DIK 1,5

2715966

<https://www.phoenixcontact.com/de/produkte/2715966>

DIN rail, unperforated

DIN rail, unperforated - NS 35/15 WH UNPERF 2000MM-VPE 10 - 1204135

<https://www.phoenixcontact.com/de/produkte/1204135>



DIN rail, unperforated, similar to EN 60715, material: Steel, Galvanized, white passivated, Standard profile, color: silver, Pack of 10 (20 m)

DIN rail, unperforated

DIN rail, unperforated - NS 35/15 AL UNPERF 2000MM - 1201756

<https://www.phoenixcontact.com/de/produkte/1201756>



DIN rail, unperforated, similar to EN 60715, material: Aluminum, uncoated, Standard profile, color: silver

Sensor/actuator terminal block - DIK 1,5

2715966

<https://www.phoenixcontact.com/de/produkte/2715966>

DIN rail perforated

DIN rail perforated - NS 35/15 ZN PERF 2000MM - 1206599

<https://www.phoenixcontact.com/de/produkte/1206599>



DIN rail perforated, similar to EN 60715, material: Steel, galvanized, Standard profile, color: silver, Pack of 25 (50 m)

DIN rail, unperforated

DIN rail, unperforated - NS 35/15 ZN UNPERF 2000MM - 1206586

<https://www.phoenixcontact.com/de/produkte/1206586>



DIN rail, unperforated, similar to EN 60715, material: Steel, galvanized, Standard profile, color: silver, Pack of 25 (50 m)

Sensor/actuator terminal block - DIK 1,5

2715966

<https://www.phoenixcontact.com/de/produkte/2715966>

DIN rail, unperforated

DIN rail, unperforated - NS 35/15 CU UNPERF 2000MM-VPE 10 - 1201895

<https://www.phoenixcontact.com/de/produkte/1201895>



DIN rail, unperforated, similar to EN 60715, material: Copper, uncoated, Standard profile, color: copper-colored, Pack of 10 (20 m)

End cap

End cap - NS 35/15 CAP - 1206573

<https://www.phoenixcontact.com/de/produkte/1206573>

DIN rail end piece, for DIN rail NS 35/15



Sensor/actuator terminal block - DIK 1,5

2715966

<https://www.phoenixcontact.com/de/produkte/2715966>

DIN rail, unperforated

DIN rail, unperforated - NS 35/15-2,3 UNPERF 2000MM-VPE 10 - 1201798

<https://www.phoenixcontact.com/de/produkte/1201798>



DIN rail, unperforated, acc. to EN 60715, material: Steel, galvanized, passivated with a thick layer, Standard profile 2.3 mm, color: silver, Pack of 10 (20 m)

Zack marker strip

Zack marker strip - ZB 6:UNBEDRUCKT - 1051003

<https://www.phoenixcontact.com/de/produkte/1051003>



Zack marker strip, Strip, white, unlabeled, can be labeled with: PLOTMARK, CMS-P1-PLOTTER, mounting type: snapped, for terminal block width: 6.2 mm, lettering field size: 6.15 x 10.5 mm, Number of individual labels: 10

Sensor/actuator terminal block - DIK 1,5

2715966

<https://www.phoenixcontact.com/de/produkte/2715966>

Zack marker strip

Zack marker strip - ZB 6 CUS - 0824992

<https://www.phoenixcontact.com/de/produkte/0824992>



Zack marker strip, can be ordered: Strip, white, labeled according to customer specifications, mounting type: snap into tall marker groove, for terminal block width: 6.2 mm, lettering field size: 6.15 x 10.5 mm, Number of individual labels: 10

Zack marker strip

Zack marker strip - ZB 6,LGS:FORTL.ZAHLEN - 1051016

<https://www.phoenixcontact.com/de/produkte/1051016>



Zack marker strip, Strip, white, labeled, can be labeled with: CMS-P1-PLOTTER, printed horizontally: consecutive numbers 1 ... 10, 11 ... 20, etc. up to 491 ... 500, mounting type: snapped, for terminal block width: 6.2 mm, lettering field size: 6.15 x 10.5 mm, Number of individual labels: 10

Sensor/actuator terminal block - DIK 1,5

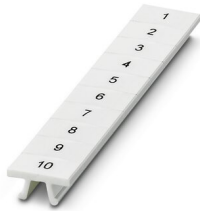
2715966

<https://www.phoenixcontact.com/de/produkte/2715966>

Zack marker strip

Zack marker strip - ZB 6,QR:FORTL.ZAHLEN - 1051029

<https://www.phoenixcontact.com/de/produkte/1051029>



Zack marker strip, Strip, white, labeled, can be labeled with: CMS-P1-PLOTTER, Printed vertically: consecutive numbers 1 ... 10, 11 ... 20, etc. up to 491 ... 500, mounting type: snapped, for terminal block width: 6.2 mm, lettering field size: 6.15 x 10.5 mm, Number of individual labels: 10

Zack marker strip

Zack marker strip - ZB 6,LGS:GLEICHE ZAHLEN - 1051032

<https://www.phoenixcontact.com/de/produkte/1051032>



Zack marker strip, Strip, white, labeled, can be labeled with: CMS-P1-PLOTTER, printed horizontally: Identical numbers 1 or 2, etc. up to 100, mounting type: snapped, for terminal block width: 6.2 mm, lettering field size: 6.15 x 10.5 mm, Number of individual labels: 10

Sensor/actuator terminal block - DIK 1,5

2715966

<https://www.phoenixcontact.com/de/produkte/2715966>

Marker for terminal blocks

Marker for terminal blocks - ZB 6,LGS:L1-N,PE - 1051414

<https://www.phoenixcontact.com/de/produkte/1051414>



Marker for terminal blocks, Strip, white, labeled, can be labeled with: CMS-P1-PLOTTER, horizontal: L1, L2, L3, N, PE, L1, L2, L3, N, PE, mounting type: snapped, for terminal block width: 6.2 mm, lettering field size: 6.15 x 10.5 mm, Number of individual labels: 10

Marker for terminal blocks

Marker for terminal blocks - ZB 6,LGS:U-N - 1051430

<https://www.phoenixcontact.com/de/produkte/1051430>



Marker for terminal blocks, Strip, white, labeled, can be labeled with: CMS-P1-PLOTTER, printed horizontally: U, V, W, N, GND, U, V, W, N, GND, mounting type: snapped, for terminal block width: 6.2 mm, lettering field size: 6.15 x 10.5 mm, Number of individual labels: 10

Sensor/actuator terminal block - DIK 1,5

2715966

<https://www.phoenixcontact.com/de/produkte/2715966>

Marker for terminal blocks

Marker for terminal blocks - UC-TM 6 - 0818085

<https://www.phoenixcontact.com/de/produkte/0818085>



Marker for terminal blocks, Sheet, white, unlabeled, can be labeled with: BLUEMARK ID COLOR, BLUEMARK ID, BLUEMARK CLED, PLOTMARK, CMS-P1-PLOTTER, mounting type: snapped, for terminal block width: 6.2 mm, lettering field size: 5.6 x 10.5 mm, Number of individual labels: 80

Marker for terminal blocks

Marker for terminal blocks - UC-TM 6 CUS - 0824589

<https://www.phoenixcontact.com/de/produkte/0824589>



Marker for terminal blocks, can be ordered: by sheet, white, labeled according to customer specifications, mounting type: snap into tall marker groove, for terminal block width: 6.2 mm, lettering field size: 5.6 x 10.5 mm, Number of individual labels: 80

Sensor/actuator terminal block - DIK 1,5

2715966

<https://www.phoenixcontact.com/de/produkte/2715966>

Marker for terminal blocks

Marker for terminal blocks - UCT-TM 6 - 0828736

<https://www.phoenixcontact.com/de/produkte/0828736>



Marker for terminal blocks, Sheet, white, unlabeled, can be labeled with: TOPMARK NEO, TOPMARK LASER, BLUEMARK ID COLOR, BLUEMARK ID, BLUEMARK CLED, THERMOMARK PRIME, THERMOMARK CARD 2.0, THERMOMARK CARD, mounting type: snapped, for terminal block width: 6.2 mm, lettering field size: 5.6 x 10.5 mm, Number of individual labels: 60

Marker for terminal blocks

Marker for terminal blocks - UCT-TM 6 CUS - 0829602

<https://www.phoenixcontact.com/de/produkte/0829602>



Marker for terminal blocks, can be ordered: by sheet, white, labeled according to customer specifications, mounting type: snap into tall marker groove, for terminal block width: 6.2 mm, lettering field size: 5.6 x 10.5 mm, Number of individual labels: 60

Sensor/actuator terminal block - DIK 1,5

2715966

<https://www.phoenixcontact.com/de/produkte/2715966>

End clamp

End clamp - CLIPFIX 35 - 3022218

<https://www.phoenixcontact.com/de/produkte/3022218>



Quick mounting end clamp for NS 35/7,5 DIN rail or NS 35/15 DIN rail, with marking option, width: 9.5 mm, color: gray

End clamp

End clamp - CLIPFIX 35-5 - 3022276

<https://www.phoenixcontact.com/de/produkte/3022276>



Quick mounting end clamp for NS 35/7,5 DIN rail or NS 35/15 DIN rail, with marking option, with parking option for FBS...5, FBS...6, KSS 5, KSS 6, width: 5.15 mm, color: gray

Sensor/actuator terminal block - DIK 1,5

2715966

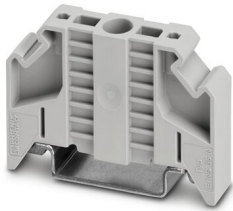
<https://www.phoenixcontact.com/de/produkte/2715966>

End clamp

End clamp - E/NS 35 N - 0800886

<https://www.phoenixcontact.com/de/produkte/0800886>

End clamp, width: 9.5 mm, color: gray



End clamp

End clamp - E/UK - 1201442

<https://www.phoenixcontact.com/de/produkte/1201442>

End clamp, material: PA, color: gray, Mounting on a DIN rail NS 32 or NS 35



Sensor/actuator terminal block - DIK 1,5

2715966

<https://www.phoenixcontact.com/de/produkte/2715966>

End clamp

End clamp - E/UK 1 - 1201413

<https://www.phoenixcontact.com/de/produkte/1201413>



End clamps, for supporting the ends of double-level and three-level terminal blocks, width: 10 mm, color: gray

Phoenix Contact 2022 © - all rights reserved

<https://www.phoenixcontact.com>

PHOENIX CONTACT Deutschland GmbH

Flachsmarktstraße 8

D-32825 Blomberg

+49 52 35/3-1 20 00

info@phoenixcontact.de