

# Feed-through terminal block - UK 2,5 N BU

3003350

<https://www.phoenixcontact.com/de/produkte/3003350>

Please be informed that the data shown in this PDF document is generated from our Online Catalog. Please find the complete data in the user documentation. Our General Terms of Use for Downloads are valid.

---



Feed-through terminal block, nom. voltage: 800 V, nominal current: 24 A, connection method: Screw connection, Rated cross section: 2.5 mm<sup>2</sup>, cross section: 0.2 mm<sup>2</sup> - 4 mm<sup>2</sup>, mounting type: NS 35/7,5, NS 35/15, NS 32, color: blue

---

## Your advantages

- Universal foot which can be used on NS 35... and NS 32... DIN rails
- The UK universal screw terminal block series has the typical features which are decisive for practical applications
- Potential distribution via fixed bridges in the terminal center or insertion bridges in the clamping space

# Feed-through terminal block - UK 2,5 N BU



3003350

<https://www.phoenixcontact.com/de/produkte/3003350>

## Commercial Data

Item number	3003350
Packing unit	50 pc
Minimum order quantity	1 pc
Sales Key	A1 - Reihenklennen
Product Key	BE1211
Catalog Page	Page 459 (C-1-2019)
GTIN	4017918099282
Weight per Piece (including packing)	6,359 g
Weight per Piece (excluding packing)	5,955 g
Customs tariff number	85369010
Country of origin	IN

3003350

<https://www.phoenixcontact.com/de/produkte/3003350>

## Technical Data

### Product properties

Product type	Feed-through terminal block
Number of connections	2
Number of rows	1
Potentials	1

### Insulation characteristics

Overvoltage category	III
Degree of pollution	3

### Electrical properties

Rated surge voltage	8 kV
Maximum power dissipation for nominal condition	0.77 W

### Connection data

Number of connections per level	2
Nominal cross section	2.5 mm <sup>2</sup>

### Level 1 above 1 below 1

Screw thread	M3
Tightening torque	0.6 ... 0.8 Nm
Stripping length	7 mm
Internal cylindrical gage	A3
Conductor cross section solid	0.2 mm <sup>2</sup> ... 4 mm <sup>2</sup>
Cross section AWG	24 ... 12
Conductor cross section flexible	0.2 mm <sup>2</sup> ... 2.5 mm <sup>2</sup>
Conductor cross section, flexible [AWG]	24 ... 14
Flexible conductor cross section flexible (ferrule, w/o plastic sleeve)	0.25 mm <sup>2</sup> ... 2.5 mm <sup>2</sup>
Flexible conductor cross section (ferrule with plastic sleeve)	0.25 mm <sup>2</sup> ... 1.5 mm <sup>2</sup>
Cross-section with insertion bridge, rigid	2.5 mm <sup>2</sup>
Cross-section with insertion bridge, flexible	2.5 mm <sup>2</sup>
2 conductors with same cross section, solid	0.2 mm <sup>2</sup> ... 1 mm <sup>2</sup>
2 conductors with same cross section, flexible	0.2 mm <sup>2</sup> ... 1 mm <sup>2</sup>
2 conductors with same cross section, flexible, with ferrule without plastic sleeve	0.25 mm <sup>2</sup> ... 1 mm <sup>2</sup>
2 conductors with the same cross section, flexible, with TWIN ferrule with plastic sleeve	0.5 mm <sup>2</sup> ... 1.5 mm <sup>2</sup>
Nominal current	24 A
Maximum load current	24 A (with a 2.5 mm <sup>2</sup> conductor cross section)
Nominal voltage	800 V
Nominal cross section	2.5 mm <sup>2</sup>

# Feed-through terminal block - UK 2,5 N BU



3003350

<https://www.phoenixcontact.com/de/produkte/3003350>

## Ex data

### Rated data (ATEX/IECEX)

ATEX certificate	PTB 19 ATEX 1014 U
IEC Ex certificate	IECEX PTB 19.0039 U
Identification	□ II 2 G Ex eb IIC Gb
Operating temperature range	-60 °C ... 105 °C
Ex-certified accessories	3001022 D-UK 2,5 3003020 D-UK 4/10 1212587 SF-SL 0,6X3,5-100 S-VDE 1201442 E/UK
Bridge data	20 A / 2.5 mm <sup>2</sup>
Ex temperature increase	40 K (20.5 A / 2.5 mm <sup>2</sup> ) 40 K (25.5 A / 4 mm <sup>2</sup> )
Rated voltage	500 V
for bridging with bridge	550 V
- At bridging between non-adjacent terminal blocks	176 V
Rated insulation voltage	500 V

### Ex level General

Rated current	20.5 A (2.5 mm <sup>2</sup> )
Maximum load current	25.5 A (4 mm <sup>2</sup> )
Contact resistance	0.34 mΩ

### Ex connection data General

Torque range	0.6 Nm ... 0.8 Nm
Nominal cross section	2.5 mm <sup>2</sup>
Rated cross section AWG	14
Connection capacity rigid	0.2 mm <sup>2</sup> ... 4 mm <sup>2</sup>
Connection capacity AWG	24 ... 12
Connection capacity flexible	0.2 mm <sup>2</sup> ... 2.5 mm <sup>2</sup>
Connection capacity AWG	24 ... 14
2 conductors with same cross section, solid	0.2 mm <sup>2</sup> ... 1 mm <sup>2</sup>
2 conductors with the same cross-section AWG rigid	24 ... 18
2 conductors with same cross section, stranded	0.2 mm <sup>2</sup> ... 1 mm <sup>2</sup>
2 conductors with the same cross-section AWG flexible	24 ... 18

## Dimensions

Width	5.2 mm
End cover width	1.5 mm
Height NS 35/15	49.5 mm
Height NS 35/7,5	42 mm
Height	1.654 "
Height NS 32	47 mm
Length	42.5 mm

# Feed-through terminal block - UK 2,5 N BU



3003350

<https://www.phoenixcontact.com/de/produkte/3003350>

## Material specifications

Color	blue
Flammability rating according to UL 94	V2
Insulating material group	I
Insulating material	PA
Temperature index of insulation material (DIN EN 60216-1 (VDE 0304-21))	125 °C
Relative insulation material temperature index (Elec., UL 746 B)	125 °C

## Electrical tests

### Surge voltage test

Test voltage setpoint	9.8 kV
Result	Test passed

### Temperature-rise test

Requirement temperature-rise test	Increase in temperature $\leq 45$ K
Result	Test passed
Short-time withstand current 2.5 mm <sup>2</sup>	0.3 kA
Short-time withstand current 4 mm <sup>2</sup>	0.48 kA
Result	Test passed

### Power-frequency withstand voltage

Test voltage setpoint	2 kV
Result	Test passed

## Mechanical properties

### Mechanical data

Open side panel	Yes
-----------------	-----

## Mechanical tests

### Mechanical strength

Result	Test passed
--------	-------------

### Attachment on the carrier

DIN rail/fixing support	NS 32/NS 35
Test force setpoint	1 N
Result	Test passed

### Test for conductor damage and slackening

Rotation speed	10 rpm
Revolutions	135
Conductor cross section/weight	0.2 mm <sup>2</sup> / 0.2 kg
	2.5 mm <sup>2</sup> / 0.7 kg
	4 mm <sup>2</sup> / 0.9 kg

# Feed-through terminal block - UK 2,5 N BU



3003350

<https://www.phoenixcontact.com/de/produkte/3003350>

Result	Test passed
--------	-------------

## Environmental and real-life conditions

### Needle-flame test

Time of exposure	30 s
Result	Test passed

### Ambient conditions

Ambient temperature (operation)	-60 °C ... 105 °C (max. short-term operating temperature RTI Elec.)
Ambient temperature (storage/transport)	-25 °C ... 60 °C (for a short time, not exceeding 24 h, -60 °C to +70 °C)
Ambient temperature (assembly)	-5 °C ... 70 °C
Ambient temperature (actuation)	-5 °C ... 70 °C
Permissible humidity (storage/transport)	30 % ... 70 %

## Standards and regulations

Connection in acc. with standard	IEC 60947-7-1
----------------------------------	---------------

## Mounting

Mounting type	NS 35/7,5
	NS 35/15
	NS 32

# Feed-through terminal block - UK 2,5 N BU

3003350

<https://www.phoenixcontact.com/de/produkte/3003350>



## Drawings

Circuit diagram



# Feed-through terminal block - UK 2,5 N BU



3003350

<https://www.phoenixcontact.com/de/produkte/3003350>

## Approvals

<b>DNV</b> Approval ID: TAE00001CT				
	Nominal Voltage $U_N$	Nominal Current $I_N$	Cross Section AWG	Cross Section $mm^2$
			-	-

<b>CSA</b> Approval ID: 13631				
	Nominal Voltage $U_N$	Nominal Current $I_N$	Cross Section AWG	Cross Section $mm^2$
	300 V	20 A	28 - 12	-

<b>IECEE CB Scheme</b> Approval ID: NL-65062				
	Nominal Voltage $U_N$	Nominal Current $I_N$	Cross Section AWG	Cross Section $mm^2$
	800 V	24 A	-	- 2.5

<b>EAC</b> Approval ID: RU C-DE.BL08.B.00534				
---	--	--	--	--

<b>cULus Recognized</b> Approval ID: E60425				
	Nominal Voltage $U_N$	Nominal Current $I_N$	Cross Section AWG	Cross Section $mm^2$
Use group B	300 V	20 A	30 - 12	-
Use group C	300 V	20 A	30 - 12	-
Use group D	600 V	5 A	30 - 12	-

<b>CCA</b> Approval ID: NTR-NL 3067				
	Nominal Voltage $U_N$	Nominal Current $I_N$	Cross Section AWG	Cross Section $mm^2$
	800 V		-	- 2.5

<b>KEMA-KEUR</b> Approval ID: 71-113414				
	Nominal Voltage $U_N$	Nominal Current $I_N$	Cross Section AWG	Cross Section $mm^2$
	800 V		-	- 2.5



# Feed-through terminal block - UK 2,5 N BU





3003350

<https://www.phoenixcontact.com/de/produkte/3003350>

 <b>BV</b> Approval ID: 07774/E0 BV	Nominal Voltage $U_N$	Nominal Current $I_N$	Cross Section AWG	Cross Section $\text{mm}^2$
			-	-


 <b>cUL Recognized</b> Approval ID: E192998	Nominal Voltage $U_N$	Nominal Current $I_N$	Cross Section AWG	Cross Section $\text{mm}^2$
	300 V	20 A	30 - 12	-

 <b>EAC Ex</b> Approval ID: RU C-DE.HA91.B.00066
--

 <b>IECEX</b> Approval ID: IECEX PTB 19.0039U
---

 <b>UL Recognized</b> Approval ID: E192998	Nominal Voltage $U_N$	Nominal Current $I_N$	Cross Section AWG	Cross Section $\text{mm}^2$
	300 V	20 A	30 - 12	-

 <b>ATEX</b> Approval ID: PTB19ATEX1014U
--

 <b>CCC</b> Approval ID: 2020322313000623
---

 <b>NEPSI</b> Approval ID: GYJ20.1195U
--

 <b>DNV GL-EX</b> Approval ID: TAE00003K6	Nominal Voltage $U_N$	Nominal Current $I_N$	Cross Section AWG	Cross Section $\text{mm}^2$
	EEx e II part certificate	440 V	32 A	-

<b>cULus Recognized</b>
-------------------------

# Feed-through terminal block - UK 2,5 N BU

3003350

<https://www.phoenixcontact.com/de/produkte/3003350>



# Feed-through terminal block - UK 2,5 N BU



3003350

<https://www.phoenixcontact.com/de/produkte/3003350>

## Classifications

### ECLASS

ECLASS-9.0	27141120
ECLASS-10.0.1	27141120
ECLASS-11.0	27141120

### ETIM

ETIM 8.0	EC000897
----------	----------

### UNSPSC

UNSPSC 21.0	39121400
-------------	----------

# Feed-through terminal block - UK 2,5 N BU



3003350

<https://www.phoenixcontact.com/de/produkte/3003350>

## Environmental Product Compliance

China RoHS	Environmentally friendly use period: unlimited = EFUP-e
	No hazardous substances above threshold values

# Feed-through terminal block - UK 2,5 N BU

3003350

<https://www.phoenixcontact.com/de/produkte/3003350>

## Accessories

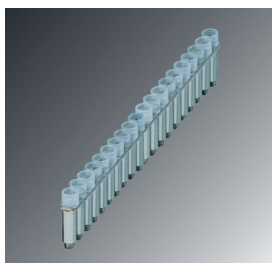


Note: Applying some accessories below might limit this product.

### Fixed bridge

Fixed bridge - FBRI 20-5 N - 3000515

<https://www.phoenixcontact.com/de/produkte/3000515>

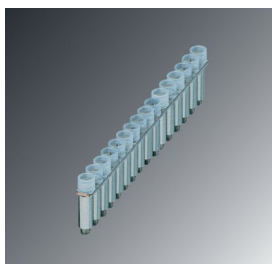


Fixed bridge, pitch: 5 mm, color: silver

### Fixed bridge

Fixed bridge - FBRI 16-5 N - 3000476

<https://www.phoenixcontact.com/de/produkte/3000476>



Fixed bridge, color: silver

# Feed-through terminal block - UK 2,5 N BU

3003350

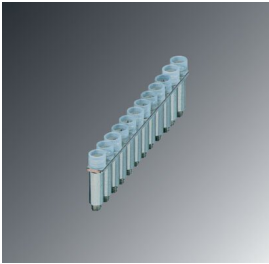
<https://www.phoenixcontact.com/de/produkte/3003350>



## Fixed bridge

Fixed bridge - FBRI 12-5 N - 3000434

<https://www.phoenixcontact.com/de/produkte/3000434>



Fixed bridge, color: silver

---

## Fixed bridge

Fixed bridge - FBRI 2-5 N - 3000227

<https://www.phoenixcontact.com/de/produkte/3000227>



Fixed bridge, pitch: 5 mm, color: silver

# Feed-through terminal block - UK 2,5 N BU

3003350

<https://www.phoenixcontact.com/de/produkte/3003350>

## Fixed bridge

Fixed bridge - FBRI 10-5 N - 2770642

<https://www.phoenixcontact.com/de/produkte/2770642>



Fixed bridge, pitch: 5.2 mm, color: silver

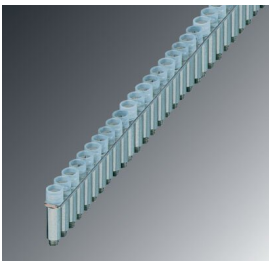
 Max. current carrying capacity: 24 A

---

## Fixed bridge

Fixed bridge - FBRI 40-5 N - 3006823

<https://www.phoenixcontact.com/de/produkte/3006823>



Fixed bridge, color: silver

# Feed-through terminal block - UK 2,5 N BU

3003350

<https://www.phoenixcontact.com/de/produkte/3003350>



## Insertion bridge

Insertion bridge - EBL 3- 5 - 2303158

<https://www.phoenixcontact.com/de/produkte/2303158>

Insertion bridge, pitch: 5.2 mm, color: gray



 Max. current carrying capacity: 24 A

---

## Insertion bridge

Insertion bridge - EBL 2- 5 - 2303145

<https://www.phoenixcontact.com/de/produkte/2303145>

Insertion bridge, pitch: 5.2 mm, color: gray



 Max. current carrying capacity: 24 A



# Feed-through terminal block - UK 2,5 N BU

3003350

<https://www.phoenixcontact.com/de/produkte/3003350>



## Insertion bridge

Insertion bridge - EBL 10- 5 - 2303132

<https://www.phoenixcontact.com/de/produkte/2303132>

Insertion bridge, pitch: 5.2 mm, color: gray



 Max. current carrying capacity: 24 A

---


## Switching jumper

Switching jumper - USBR 2-7 - 2303239

<https://www.phoenixcontact.com/de/produkte/2303239>

Switching jumper, pitch: 7 mm, color: silver



 Max. current carrying capacity: 18 A

# Feed-through terminal block - UK 2,5 N BU

3003350

<https://www.phoenixcontact.com/de/produkte/3003350>

## Switching jumper

Switching jumper - USBRJ 2-7 - 2305538

<https://www.phoenixcontact.com/de/produkte/2305538>



Switching jumper, color: silver

---

## Switching jumper

Switching jumper - SBRN 2-7 - 1413230

<https://www.phoenixcontact.com/de/produkte/1413230>



Switching jumper, pitch: 7 mm, color: silver

# Feed-through terminal block - UK 2,5 N BU



3003350

<https://www.phoenixcontact.com/de/produkte/3003350>

## Fixed bridge

Fixed bridge - FB-150                      METER - 0201595

<https://www.phoenixcontact.com/de/produkte/0201595>



Cross connection rail, for fixed bridging of identical inputs and outputs, made of Cu, nickel-plated, 1 m long

---

## End cover

End cover - D-UK 2,5 - 3001022

<https://www.phoenixcontact.com/de/produkte/3001022>



End cover, length: 42.5 mm, width: 1.5 mm, height: 30.7 mm, color: gray

# Feed-through terminal block - UK 2,5 N BU

3003350

<https://www.phoenixcontact.com/de/produkte/3003350>

## DIN rail perforated

DIN rail perforated - NS 32 PERF 2000MM-VPE 10 - 1201002

<https://www.phoenixcontact.com/de/produkte/1201002>



DIN rail perforated, acc. to EN 60715, material: Steel, galvanized, passivated with a thick layer, G profile, color: silver, Pack of 10 (20 m)

---

## Warning label

Warning label - WS 4- 5 - 0805344

<https://www.phoenixcontact.com/de/produkte/0805344>

Warning plate, with 2 plastic screws, across 4 terminal blocks, pitch 5 mm



# Feed-through terminal block - UK 2,5 N BU

3003350

<https://www.phoenixcontact.com/de/produkte/3003350>

## DIN rail, unperforated

DIN rail, unperforated - NS 32 UNPERF 2000MM-VPE 10 - 1201015

<https://www.phoenixcontact.com/de/produkte/1201015>



DIN rail, unperforated, acc. to EN 60715, material: Steel, galvanized, passivated with a thick layer, G profile, color: silver, Pack of 10 (20 m)

---

## Warning label

Warning label - WS 3- 5 - 0805357

<https://www.phoenixcontact.com/de/produkte/0805357>

Warning plate, with 2 plastic screws, across 3 terminal blocks, pitch 5 mm



# Feed-through terminal block - UK 2,5 N BU

3003350

<https://www.phoenixcontact.com/de/produkte/3003350>

## DIN rail perforated

DIN rail perforated - NS 35/ 7,5 PERF 2000MM - 0801733

<https://www.phoenixcontact.com/de/produkte/0801733>



DIN rail perforated, acc. to EN 60715, material: Steel, galvanized, passivated with a thick layer, Standard profile, color: silver, Pack of 25 (50 m)

---

## Warning label

Warning label - WS 5- 5 - 0805331

<https://www.phoenixcontact.com/de/produkte/0805331>

Warning plate, with 2 plastic screws, across 5 terminal blocks, pitch 5 mm



# Feed-through terminal block - UK 2,5 N BU

3003350

<https://www.phoenixcontact.com/de/produkte/3003350>

## DIN rail, unperforated

DIN rail, unperforated - NS 35/ 7,5 UNPERF 2000MM - 0801681

<https://www.phoenixcontact.com/de/produkte/0801681>



DIN rail, unperforated, acc. to EN 60715, material: Steel, galvanized, passivated with a thick layer, Standard profile, color: silver, Pack of 25 (50 m)

---

## Screw

Screw - ZSR - 2303608

<https://www.phoenixcontact.com/de/produkte/2303608>



Screw

# Feed-through terminal block - UK 2,5 N BU

3003350

<https://www.phoenixcontact.com/de/produkte/3003350>



## DIN rail perforated

DIN rail perforated - NS 35/ 7,5 WH PERF 2000MM - 1204119

<https://www.phoenixcontact.com/de/produkte/1204119>



DIN rail perforated, acc. to EN 60715, material: Steel, Galvanized, white passivated, Standard profile, color: silver, Pack of 25 (50 m)

---

## Short-circuit connector

Short-circuit connector - KSS 5 - 2303543

<https://www.phoenixcontact.com/de/produkte/2303543>



Short-circuit connector, pitch: 5 mm, color: black



# Feed-through terminal block - UK 2,5 N BU

3003350

<https://www.phoenixcontact.com/de/produkte/3003350>



## DIN rail, unperforated

DIN rail, unperforated - NS 35/ 7,5 WH UNPERF 2000MM-VPE 10 - 1204122

<https://www.phoenixcontact.com/de/produkte/1204122>



DIN rail, unperforated, acc. to EN 60715, material: Steel, Galvanized, white passivated, Standard profile, color: silver, Pack of 10 (20 m)

---

## Reducing plug

Reducing plug - RPS - 0201647

<https://www.phoenixcontact.com/de/produkte/0201647>



Reducing plug, color: gray

# Feed-through terminal block - UK 2,5 N BU

3003350

<https://www.phoenixcontact.com/de/produkte/3003350>

## DIN rail, unperforated

DIN rail, unperforated - NS 35/ 7,5 AL UNPERF 2000MM - 0801704

<https://www.phoenixcontact.com/de/produkte/0801704>



DIN rail, unperforated, acc. to EN 60715, material: Aluminum, uncoated, Standard profile, color: silver, Pack of 25 (50 m)

---

## Separating plate

Separating plate - TS-KK 3 - 2770215

<https://www.phoenixcontact.com/de/produkte/2770215>



Separating plate, length: 14 mm, width: 0.5 mm, height: 16 mm, color: gray

# Feed-through terminal block - UK 2,5 N BU

3003350

<https://www.phoenixcontact.com/de/produkte/3003350>

## DIN rail perforated

DIN rail perforated - NS 35/ 7,5 ZN PERF 2000MM - 1206421

<https://www.phoenixcontact.com/de/produkte/1206421>



DIN rail perforated, acc. to EN 60715, material: Steel, galvanized, Standard profile, color: silver, Pack of 25 (50 m)

---

## Partition plate

Partition plate - ATP-UK - 3003224

<https://www.phoenixcontact.com/de/produkte/3003224>



Partition plate, length: 56 mm, width: 1.5 mm, height: 45.7 mm, color: gray

# Feed-through terminal block - UK 2,5 N BU

3003350

<https://www.phoenixcontact.com/de/produkte/3003350>

## DIN rail, unperforated

DIN rail, unperforated - NS 35/ 7,5 ZN UNPERF 2000MM - 1206434

<https://www.phoenixcontact.com/de/produkte/1206434>



DIN rail, unperforated, acc. to EN 60715, material: Steel, galvanized, Standard profile, color: silver, Pack of 25 (50 m)

---

## DIN rail, unperforated

DIN rail, unperforated - NS 35/ 7,5 CU UNPERF 2000MM-VPE 10 - 0801762

<https://www.phoenixcontact.com/de/produkte/0801762>



DIN rail, unperforated, acc. to EN 60715, material: Copper, uncoated, Standard profile, color: copper-colored, Pack of 10 (20 m)

# Feed-through terminal block - UK 2,5 N BU

3003350

<https://www.phoenixcontact.com/de/produkte/3003350>

## Screwdriver

Screwdriver - SF-SL 0,6X3,5-100 S-VDE - 1212587

<https://www.phoenixcontact.com/de/produkte/1212587>



Actuation tool, for ST terminal blocks, VDE insulated, with slimmer insulation integrated in the blade, also suitable for use as a bladed screwdriver, size: 0.6 x 3.5 x 100 mm, 2-component grip, with non-slip grip

---

## End cap

End cap - NS 35/ 7,5 CAP - 1206560

<https://www.phoenixcontact.com/de/produkte/1206560>

DIN rail end piece, for DIN rail NS 35/7.5



# Feed-through terminal block - UK 2,5 N BU

3003350

<https://www.phoenixcontact.com/de/produkte/3003350>

## Test plugs

Test plugs - PS-UK 2,5 B/E - 3001132

<https://www.phoenixcontact.com/de/produkte/3001132>



Test plugs, color: red

---

## DIN rail perforated

DIN rail perforated - NS 35/15 PERF 2000MM - 1201730

<https://www.phoenixcontact.com/de/produkte/1201730>



DIN rail perforated, similar to EN 60715, material: Steel, galvanized, passivated with a thick layer, Standard profile, color: silver, Pack of 25 (50 m)

# Feed-through terminal block - UK 2,5 N BU

3003350

<https://www.phoenixcontact.com/de/produkte/3003350>

## Test plugs

Test plugs - PS-UK 2,5 B/Z-5 - 3001226

<https://www.phoenixcontact.com/de/produkte/3001226>



Test plugs, color: red

---

## DIN rail, unperforated

DIN rail, unperforated - NS 35/15 UNPERF 2000MM - 1201714

<https://www.phoenixcontact.com/de/produkte/1201714>



DIN rail, unperforated, similar to EN 60715, material: Steel, galvanized, passivated with a thick layer, Standard profile, color: silver, Pack of 25 (50 m)

# Feed-through terminal block - UK 2,5 N BU

3003350

<https://www.phoenixcontact.com/de/produkte/3003350>

## DIN rail perforated

DIN rail perforated - NS 35/15 WH PERF 2000MM - 0806602

<https://www.phoenixcontact.com/de/produkte/0806602>



DIN rail perforated, similar to EN 60715, material: Steel, Galvanized, white passivated, Standard profile, color: white, Pack of 25 (50 m)

---

## DIN rail, unperforated

DIN rail, unperforated - NS 35/15 WH UNPERF 2000MM-VPE 10 - 1204135

<https://www.phoenixcontact.com/de/produkte/1204135>



DIN rail, unperforated, similar to EN 60715, material: Steel, Galvanized, white passivated, Standard profile, color: silver, Pack of 10 (20 m)



# Feed-through terminal block - UK 2,5 N BU

3003350

<https://www.phoenixcontact.com/de/produkte/3003350>

## DIN rail, unperforated

DIN rail, unperforated - NS 35/15 AL UNPERF 2000MM - 1201756

<https://www.phoenixcontact.com/de/produkte/1201756>



DIN rail, unperforated, similar to EN 60715, material: Aluminum, uncoated, Standard profile, color: silver

---

## DIN rail perforated

DIN rail perforated - NS 35/15 ZN PERF 2000MM - 1206599

<https://www.phoenixcontact.com/de/produkte/1206599>



DIN rail perforated, similar to EN 60715, material: Steel, galvanized, Standard profile, color: silver, Pack of 25 (50 m)

# Feed-through terminal block - UK 2,5 N BU

3003350

<https://www.phoenixcontact.com/de/produkte/3003350>

## DIN rail, unperforated

DIN rail, unperforated - NS 35/15 ZN UNPERF 2000MM - 1206586

<https://www.phoenixcontact.com/de/produkte/1206586>



DIN rail, unperforated, similar to EN 60715, material: Steel, galvanized, Standard profile, color: silver, Pack of 25 (50 m)

---

## DIN rail, unperforated

DIN rail, unperforated - NS 35/15 CU UNPERF 2000MM-VPE 10 - 1201895

<https://www.phoenixcontact.com/de/produkte/1201895>



DIN rail, unperforated, similar to EN 60715, material: Copper, uncoated, Standard profile, color: copper-colored, Pack of 10 (20 m)

# Feed-through terminal block - UK 2,5 N BU

3003350

<https://www.phoenixcontact.com/de/produkte/3003350>

## End cap

End cap - NS 35/15 CAP - 1206573

<https://www.phoenixcontact.com/de/produkte/1206573>

DIN rail end piece, for DIN rail NS 35/15



---

## DIN rail, unperforated

DIN rail, unperforated - NS 35/15-2,3 UNPERF 2000MM-VPE 10 - 1201798

<https://www.phoenixcontact.com/de/produkte/1201798>



DIN rail, unperforated, acc. to EN 60715, material: Steel, galvanized, passivated with a thick layer, Standard profile 2.3 mm, color: silver, Pack of 10 (20 m)

# Feed-through terminal block - UK 2,5 N BU

3003350

<https://www.phoenixcontact.com/de/produkte/3003350>

## Zack marker strip

Zack marker strip - ZB 5 :UNBEDRUCKT - 1050004

<https://www.phoenixcontact.com/de/produkte/1050004>



Zack marker strip, Strip, white, unlabeled, can be labeled with: PLOTMARK, CMS-P1-PLOTTER, mounting type: snapped, for terminal block width: 5.2 mm, lettering field size: 5.1 x 10.5 mm, Number of individual labels: 10

---

## Zack marker strip

Zack marker strip - ZB 5 CUS - 0824962

<https://www.phoenixcontact.com/de/produkte/0824962>



Zack marker strip, can be ordered: Strip, white, labeled according to customer specifications, mounting type: snap into tall marker groove, for terminal block width: 5.2 mm, lettering field size: 5.15 x 10.5 mm, Number of individual labels: 10

# Feed-through terminal block - UK 2,5 N BU

3003350

<https://www.phoenixcontact.com/de/produkte/3003350>

## Zack marker strip

Zack marker strip - ZB 5,LGS:FORTL.ZAHLEN - 1050017

<https://www.phoenixcontact.com/de/produkte/1050017>



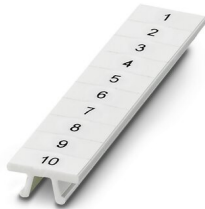
Zack marker strip, Strip, white, labeled, printed horizontally: consecutive numbers 1 ... 10, 11 ... 20, etc. up to 491 ... 500, mounting type: snapped, for terminal block width: 5.2 mm, lettering field size: 5.15 x 10.5 mm, Number of individual labels: 10

---

## Zack marker strip

Zack marker strip - ZB 5,QR:FORTL.ZAHLEN - 1050020

<https://www.phoenixcontact.com/de/produkte/1050020>



Zack marker strip, white, Printed vertically: consecutive numbers 1 ... 10, 11 ... 20, etc. up to 491 ... 500, mounting type: snapped, for terminal block width: 5.2 mm, lettering field size: 5.15 x 10.5 mm

# Feed-through terminal block - UK 2,5 N BU

3003350

<https://www.phoenixcontact.com/de/produkte/3003350>

## Zack marker strip

Zack marker strip - ZB 5,LGS:GLEICHE ZAHLEN - 1050033

<https://www.phoenixcontact.com/de/produkte/1050033>



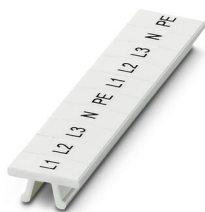
Zack marker strip, Strip, white, labeled, can be labeled with: CMS-P1-PLOTTER, printed horizontally: Identical numbers 1 or 2, etc. up to 100, mounting type: snapped, for terminal block width: 5.2 mm, lettering field size: 5.15 x 10.5 mm, Number of individual labels: 10

---

## Zack marker strip

Zack marker strip - ZB 5,LGS:L1-N,PE - 1050415

<https://www.phoenixcontact.com/de/produkte/1050415>



Zack marker strip, Strip, white, labeled, horizontal: L1, L2, L3, N, PE, L1, L2, L3, N, PE, mounting type: snapped, for terminal block width: 5.2 mm, lettering field size: 5.15 x 10.5 mm, Number of individual labels: 10

# Feed-through terminal block - UK 2,5 N BU

3003350

<https://www.phoenixcontact.com/de/produkte/3003350>

## Marker for terminal blocks

Marker for terminal blocks - UC-TM 5 - 0818108

<https://www.phoenixcontact.com/de/produkte/0818108>



Marker for terminal blocks, Sheet, white, unlabeled, can be labeled with: BLUEMARK ID COLOR, BLUEMARK ID, BLUEMARK CLED, PLOTMARK, CMS-P1-PLOTTER, mounting type: snapped, for terminal block width: 5.2 mm, lettering field size: 10.5 x 4.6 mm, Number of individual labels: 96

---

## Marker for terminal blocks

Marker for terminal blocks - UC-TM 5 CUS - 0824581

<https://www.phoenixcontact.com/de/produkte/0824581>



Marker for terminal blocks, can be ordered: by sheet, white, labeled according to customer specifications, mounting type: snap into tall marker groove, for terminal block width: 5.2 mm, lettering field size: 10.5 x 4.6 mm, Number of individual labels: 96

# Feed-through terminal block - UK 2,5 N BU

3003350

<https://www.phoenixcontact.com/de/produkte/3003350>

## Marker for terminal blocks

Marker for terminal blocks - UCT-TM 5 - 0828734

<https://www.phoenixcontact.com/de/produkte/0828734>



Marker for terminal blocks, Sheet, white, unlabeled, can be labeled with: TOPMARK NEO, TOPMARK LASER, BLUEMARK ID COLOR, BLUEMARK ID, BLUEMARK CLED, THERMOMARK PRIME, THERMOMARK CARD 2.0, THERMOMARK CARD, mounting type: snapped, for terminal block width: 5.2 mm, lettering field size: 4.6 x 10.5 mm, Number of individual labels: 72

---

## Marker for terminal blocks

Marker for terminal blocks - UCT-TM 5 CUS - 0829595

<https://www.phoenixcontact.com/de/produkte/0829595>



Marker for terminal blocks, can be ordered: by sheet, white, labeled according to customer specifications, mounting type: snap into tall marker groove, for terminal block width: 5.2 mm, lettering field size: 4.6 x 10.5 mm, Number of individual labels: 72



# Feed-through terminal block - UK 2,5 N BU

3003350

<https://www.phoenixcontact.com/de/produkte/3003350>

## Test plugs

Test plugs - MPS-MT - 0201744

<https://www.phoenixcontact.com/de/produkte/0201744>



Test plugs, with solder connection up to 1 mm<sup>2</sup> conductor cross section, color: gray

---

## Insulating sleeve

Insulating sleeve - MPS-IH WH - 0201663

<https://www.phoenixcontact.com/de/produkte/0201663>



Insulating sleeve, color: white

# Feed-through terminal block - UK 2,5 N BU

3003350

<https://www.phoenixcontact.com/de/produkte/3003350>



## Insulating sleeve

Insulating sleeve - MPS-IH RD - 0201676

<https://www.phoenixcontact.com/de/produkte/0201676>

Insulating sleeve, color: red



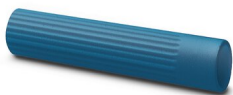
---

## Insulating sleeve

Insulating sleeve - MPS-IH BU - 0201689

<https://www.phoenixcontact.com/de/produkte/0201689>

Insulating sleeve, color: blue



# Feed-through terminal block - UK 2,5 N BU

3003350

<https://www.phoenixcontact.com/de/produkte/3003350>

## Insulating sleeve

Insulating sleeve - MPS-IH YE - 0201692

<https://www.phoenixcontact.com/de/produkte/0201692>

Insulating sleeve, color: yellow



## Insulating sleeve

Insulating sleeve - MPS-IH GN - 0201702

<https://www.phoenixcontact.com/de/produkte/0201702>

Insulating sleeve, color: green



# Feed-through terminal block - UK 2,5 N BU

3003350

<https://www.phoenixcontact.com/de/produkte/3003350>

## Insulating sleeve

Insulating sleeve - MPS-IH GY - 0201728

<https://www.phoenixcontact.com/de/produkte/0201728>

Insulating sleeve, color: gray



## Insulating sleeve

Insulating sleeve - MPS-IH BK - 0201731

<https://www.phoenixcontact.com/de/produkte/0201731>

Insulating sleeve, color: black



# Feed-through terminal block - UK 2,5 N BU

3003350

<https://www.phoenixcontact.com/de/produkte/3003350>

## End clamp

End clamp - CLIPFIX 35 - 3022218

<https://www.phoenixcontact.com/de/produkte/3022218>



Quick mounting end clamp for NS 35/7,5 DIN rail or NS 35/15 DIN rail, with marking option, width: 9.5 mm, color: gray

---

## End clamp

End clamp - CLIPFIX 35-5 - 3022276

<https://www.phoenixcontact.com/de/produkte/3022276>



Quick mounting end clamp for NS 35/7,5 DIN rail or NS 35/15 DIN rail, with marking option, with parking option for FBS...5, FBS...6, KSS 5, KSS 6, width: 15 mm, color: gray

# Feed-through terminal block - UK 2,5 N BU

3003350

<https://www.phoenixcontact.com/de/produkte/3003350>

## End clamp

End clamp - E/NS 35 N - 0800886

<https://www.phoenixcontact.com/de/produkte/0800886>

End clamp, width: 9.5 mm, color: gray



---

## End clamp

End clamp - E/UK - 1201442

<https://www.phoenixcontact.com/de/produkte/1201442>

End clamp, material: PA, color: gray, Mounting on a DIN rail NS 32 or NS 35



# Feed-through terminal block - UK 2,5 N BU

3003350

<https://www.phoenixcontact.com/de/produkte/3003350>

## End clamp

End clamp - E/UK 1 - 1201413

<https://www.phoenixcontact.com/de/produkte/1201413>



End clamps, for supporting the ends of double-level and three-level terminal blocks, width: 10 mm, color: gray

---

## Female test connector

Female test connector - PSBJ 3/13/4 - 0201304

<https://www.phoenixcontact.com/de/produkte/0201304>



Female test connector, color: silver

# Feed-through terminal block - UK 2,5 N BU

3003350

<https://www.phoenixcontact.com/de/produkte/3003350>



## Female test connector

Female test connector - PSB 3/10/4 - 0601292

<https://www.phoenixcontact.com/de/produkte/0601292>



Female test connector, color: silver

---

Phoenix Contact 2022 © - all rights reserved

<https://www.phoenixcontact.com>

PHOENIX CONTACT Deutschland GmbH

Flachsmarktstraße 8

D-32825 Blomberg

+49 52 35/3-1 20 00

[info@phoenixcontact.de](mailto:info@phoenixcontact.de)