

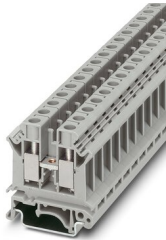
# Feed-through terminal block - UK 10 N

3005073

<https://www.phoenixcontact.com/de/produkte/3005073>

Please be informed that the data shown in this PDF document is generated from our Online Catalog. Please find the complete data in the user documentation. Our General Terms of Use for Downloads are valid.

---



Feed-through terminal block, nom. voltage: 800 V, nominal current: 57 A, connection method: Screw connection, Rated cross section: 10 mm<sup>2</sup>, cross section: 0.5 mm<sup>2</sup> - 16 mm<sup>2</sup>, mounting type: NS 35/7,5, NS 35/15, NS 32, color: gray

---

## Your advantages

- All universal terminal blocks in the UK... series can also be used in the Ex e area according to IEC/EN 60079 as standard
- The corresponding EC-type examination numbers for Ex approval can be found in the technical connection data

# Feed-through terminal block - UK 10 N



3005073

<https://www.phoenixcontact.com/de/produkte/3005073>

## Commercial Data

Item number	3005073
Packing unit	50 pc
Minimum order quantity	1 pc
Sales Key	A1 - Reihenklennen
Product Key	BE1211
Catalog Page	Page 461 (C-1-2019)
GTIN	4017918091019
Weight per Piece (including packing)	16,942 g
Weight per Piece (excluding packing)	16,327 g
Customs tariff number	85369010
Country of origin	CN

# Feed-through terminal block - UK 10 N



3005073

<https://www.phoenixcontact.com/de/produkte/3005073>

## Technical Data

### Product properties

Product type	Feed-through terminal block
Number of connections	2
Number of rows	1
Potentials	1

### Insulation characteristics

Overvoltage category	III
Degree of pollution	3

### Electrical properties

Rated surge voltage	8 kV
Maximum power dissipation for nominal condition	1.82 W

### Connection data

Number of connections per level	2
Nominal cross section	10 mm <sup>2</sup>

### Level 1 above 1 below 1

Screw thread	M4
Tightening torque	1.5 ... 1.8 Nm
Stripping length	10 mm
Internal cylindrical gage	B6
Conductor cross section solid	0.5 mm <sup>2</sup> ... 16 mm <sup>2</sup>
Cross section AWG	20 ... 6
Conductor cross section flexible	0.5 mm <sup>2</sup> ... 10 mm <sup>2</sup>
Conductor cross section, flexible [AWG]	20 ... 8
Flexible conductor cross section flexible (ferrule, w/o plastic sleeve)	0.5 mm <sup>2</sup> ... 10 mm <sup>2</sup>
Flexible conductor cross section (ferrule with plastic sleeve)	0.5 mm <sup>2</sup> ... 6 mm <sup>2</sup>
Cross-section with insertion bridge, rigid	10 mm <sup>2</sup>
Cross-section with insertion bridge, flexible	10 mm <sup>2</sup>
2 conductors with same cross section, solid	0.5 mm <sup>2</sup> ... 4 mm <sup>2</sup>
2 conductors with same cross section, flexible	0.5 mm <sup>2</sup> ... 4 mm <sup>2</sup>
2 conductors with same cross section, flexible, with ferrule without plastic sleeve	0.5 mm <sup>2</sup> ... 2.5 mm <sup>2</sup>
2 conductors with the same cross section, flexible, with TWIN ferrule with plastic sleeve	0.5 mm <sup>2</sup> ... 6 mm <sup>2</sup>
Nominal current	57 A
Maximum load current	76 A (with 16 mm <sup>2</sup> conductor cross section)
Nominal voltage	800 V
Nominal cross section	10 mm <sup>2</sup>

# Feed-through terminal block - UK 10 N



3005073

<https://www.phoenixcontact.com/de/produkte/3005073>

## Ex data

### Rated data (ATEX/IECEX)

ATEX certificate	KEMA 98 ATEX 1786 U
IEC Ex certificate	IECEX KEM 06.0029 U
Identification	Ex eb IIC Gb
Operating temperature range	-60 °C ... 110 °C
Ex-certified accessories	3003020 D-UK 4/10
	3006027 D-UK 16
	3004210 ATP-UK 5-MTK
	1205066 SZS 1,0X4,0 VDE
	1201442 E/UK
Bridge data	51.5 A / 10 mm <sup>2</sup>
	50 A / 10 mm <sup>2</sup>
Ex temperature increase	40 K (59.1 A / 10 mm <sup>2</sup> )
Rated voltage	630 V
at bridging with insertion bridge	690 V
for bridging with bridge	690 V
Rated insulation voltage	630 V

### Ex level General

Rated current	53.5 A
Maximum load current	67 A
Contact resistance	0.12 mΩ

### Ex connection data General

Torque range	1.5 Nm ... 1.8 Nm
Nominal cross section	10 mm <sup>2</sup>
Rated cross section AWG	8
Connection capacity rigid	0.5 mm <sup>2</sup> ... 16 mm <sup>2</sup>
Connection capacity AWG	20 ... 6
Connection capacity flexible	0.5 mm <sup>2</sup> ... 10 mm <sup>2</sup>
Connection capacity AWG	20 ... 8
2 conductors with same cross section, solid	0.5 mm <sup>2</sup> ... 4 mm <sup>2</sup>
2 conductors with the same cross-section AWG rigid	20 ... 12
2 conductors with same cross section, stranded	0.5 mm <sup>2</sup> ... 4 mm <sup>2</sup>
2 conductors with the same cross-section AWG flexible	20 ... 12

## Dimensions

Width	10.2 mm
End cover width	1.8 mm
Height NS 35/15	54.8 mm
Height NS 35/7,5	47.3 mm
Height	1.85 "
Height NS 32	52.3 mm

# Feed-through terminal block - UK 10 N



3005073

<https://www.phoenixcontact.com/de/produkte/3005073>

Length	42.5 mm
--------	---------

## Material specifications

Color	gray
Flammability rating according to UL 94	V0
Insulating material group	I
Insulating material	PA
Static insulating material application in cold	-60 °C
Temperature index of insulation material (DIN EN 60216-1 (VDE 0304-21))	130 °C
Relative insulation material temperature index (Elec., UL 746 B)	130 °C
Fire protection for rail vehicles (DIN EN 45545-2) R22	HL 1 - HL 3
Fire protection for rail vehicles (DIN EN 45545-2) R23	HL 1 - HL 3
Fire protection for rail vehicles (DIN EN 45545-2) R24	HL 1 - HL 3
Fire protection for rail vehicles (DIN EN 45545-2) R26	HL 1 - HL 3
Calorimetric heat release NFPA 130 (ASTM E 1354)	28 MJ/kg
Surface flammability NFPA 130 (ASTM E 162)	passed
Specific optical density of smoke NFPA 130 (ASTM E 662)	passed
Smoke gas toxicity NFPA 130 (SMP 800C)	passed

## Electrical tests

### Surge voltage test

Test voltage setpoint	9.8 kV
Result	Test passed

### Temperature-rise test

Requirement temperature-rise test	Increase in temperature $\leq$ 45 K
Result	Test passed
Short-time withstand current 10 mm <sup>2</sup>	1.2 kA
Short-time withstand current 16 mm <sup>2</sup>	1.92 kA
Result	Test passed

### Power-frequency withstand voltage

Test voltage setpoint	2 kV
Result	Test passed

## Mechanical properties

### Mechanical data

Open side panel	Yes
-----------------	-----

## Mechanical tests

### Mechanical strength

Result	Test passed
--------	-------------

### Attachment on the carrier

# Feed-through terminal block - UK 10 N



3005073

<https://www.phoenixcontact.com/de/produkte/3005073>

DIN rail/fixing support	NS 32/NS 35
Test force setpoint	5 N
Result	Test passed

## Test for conductor damage and slackening

Rotation speed	10 rpm
Revolutions	135
Conductor cross section/weight	0.5 mm <sup>2</sup> / 0.3 kg
	10 mm <sup>2</sup> / 2 kg
	16 mm <sup>2</sup> / 2.9 kg
Result	Test passed

## Environmental and real-life conditions

### Needle-flame test

Time of exposure	30 s
Result	Test passed

### Oscillation/broadband noise

Specification	DIN EN 50155 (VDE 0115-200):2008-03
Spectrum	Service life test category 1, class B, body mounted
Frequency	$f_1 = 5 \text{ Hz}$ to $f_2 = 150 \text{ Hz}$
ASD level	1.857 (m/s <sup>2</sup> ) <sup>2</sup> /Hz
Acceleration	0.8g
Test duration per axis	5 h
Test directions	X-, Y- and Z-axis
Result	Test passed

### Shocks

Specification	DIN EN 50155 (VDE 0115-200):2008-03
Pulse shape	Half-sine
Acceleration	5g
Shock duration	30 ms
Number of shocks per direction	3
Test directions	X-, Y- and Z-axis (pos. and neg.)
Result	Test passed

### Ambient conditions

Ambient temperature (operation)	-60 °C ... 105 °C (max. short-term operating temperature RTI Elec.)
Ambient temperature (storage/transport)	-25 °C ... 60 °C (for a short time, not exceeding 24 h, -60 °C to +70 °C)
Ambient temperature (assembly)	-5 °C ... 70 °C
Ambient temperature (actuation)	-5 °C ... 70 °C
Permissible humidity (storage/transport)	30 % ... 70 %

## Standards and regulations

# Feed-through terminal block - UK 10 N



3005073

<https://www.phoenixcontact.com/de/produkte/3005073>

Connection in acc. with standard	IEC 60947-7-1
----------------------------------	---------------

## Mounting

Mounting type	NS 35/7,5
	NS 35/15
	NS 32

# Feed-through terminal block - UK 10 N

3005073

<https://www.phoenixcontact.com/de/produkte/3005073>



## Drawings

### Circuit diagram





# Feed-through terminal block - UK 10 N



3005073

<https://www.phoenixcontact.com/de/produkte/3005073>

## Approvals

<b>DNV</b> Approval ID: TAE00001CT				
	Nominal Voltage $U_N$	Nominal Current $I_N$	Cross Section AWG	Cross Section $mm^2$
			-	-

<b>CSA</b> Approval ID: 13631				
	Nominal Voltage $U_N$	Nominal Current $I_N$	Cross Section AWG	Cross Section $mm^2$
Use group B	600 V	65 A	24 - 6	-
Use group C	600 V	65 A	24 - 6	-

<b>IECEE CB Scheme</b> Approval ID: NL-39959				
	Nominal Voltage $U_N$	Nominal Current $I_N$	Cross Section AWG	Cross Section $mm^2$
	800 V	57 A	-	- 10

<b>cULus Recognized</b> Approval ID: E60425				
	Nominal Voltage $U_N$	Nominal Current $I_N$	Cross Section AWG	Cross Section $mm^2$
Use group B	600 V	65 A	24 - 6	-
Use group C	600 V	65 A	24 - 6	-
Use group F	800 V	65 A	24 - 6	-

<b>KEMA-KEUR</b> Approval ID: 71-119849				
	Nominal Voltage $U_N$	Nominal Current $I_N$	Cross Section AWG	Cross Section $mm^2$
	800 V	57 A	-	- 10

<b>KR</b> Approval ID: HMB17372-EL001				
--	--	--	--	--

<b>ClassNK</b> Approval ID: 09 ME 141				
--	--	--	--	--

# Feed-through terminal block - UK 10 N



3005073

<https://www.phoenixcontact.com/de/produkte/3005073>

	Nominal Voltage $U_N$	Nominal Current $I_N$	Cross Section AWG	Cross Section $mm^2$
			-	-



**RS**

Approval ID: 17.00013.272



**ATEX**

Approval ID: KEMA98ATEX1786U



**cUL Recognized**

Approval ID: E192998

	Nominal Voltage $U_N$	Nominal Current $I_N$	Cross Section AWG	Cross Section $mm^2$
	600 V	65 A	24 - 6	-



**EAC Ex**

Approval ID: RU C-DE.HA91.B.00066



**GL**

Approval ID: 98876-96 HH

	Nominal Voltage $U_N$	Nominal Current $I_N$	Cross Section AWG	Cross Section $mm^2$
EEx e II part certificate	690 V	57 A	-	- 10



**IECEx**

Approval ID: IECEx KEM 06.0029U



**UL Recognized**

Approval ID: E192998

	Nominal Voltage $U_N$	Nominal Current $I_N$	Cross Section AWG	Cross Section $mm^2$
	600 V	65 A	24 - 6	-



**CCC**

Approval ID: 2020322313000623



**NEPSI**

Approval ID: GYJ20.1195U



**DNV GL-EX**

# Feed-through terminal block - UK 10 N



3005073

<https://www.phoenixcontact.com/de/produkte/3005073>

Approval ID: TAE00003K6				
	Nominal Voltage $U_N$	Nominal Current $I_N$	Cross Section AWG	Cross Section $\text{mm}^2$
EEEx e II part certificate	440 V	32 A	-	- 2.5

**cULus Recognized**

# Feed-through terminal block - UK 10 N



3005073

<https://www.phoenixcontact.com/de/produkte/3005073>

## Classifications

### ECLASS

ECLASS-9.0	27141120
ECLASS-10.0.1	27141120
ECLASS-11.0	27141120

### ETIM

ETIM 8.0	EC000897
----------	----------

### UNSPSC

UNSPSC 21.0	39121400
-------------	----------

# Feed-through terminal block - UK 10 N



3005073

<https://www.phoenixcontact.com/de/produkte/3005073>

## Environmental Product Compliance

China RoHS	Environmentally friendly use period: unlimited = EFUP-e
	No hazardous substances above threshold values

# Feed-through terminal block - UK 10 N

3005073

<https://www.phoenixcontact.com/de/produkte/3005073>

## Accessories



Note: Applying some accessories below might limit this product.

### Chain bridge

Chain bridge - KB- 10 - 0203205

<https://www.phoenixcontact.com/de/produkte/0203205>



Chain bridge, pitch: 10 mm, color: silver

### Fixed bridge

Fixed bridge - FBI 2-10 - 0203483

<https://www.phoenixcontact.com/de/produkte/0203483>



Fixed bridge, pitch: 10 mm, color: silver

# Feed-through terminal block - UK 10 N

3005073

<https://www.phoenixcontact.com/de/produkte/3005073>




## Fixed bridge

Fixed bridge - FBI 10-10 - 0203276

<https://www.phoenixcontact.com/de/produkte/0203276>

Fixed bridge, pitch: 10 mm, color: silver



 Max. current carrying capacity: 76 A

---

## Fixed bridge

Fixed bridge - FB 10-10-EX - 0203247

<https://www.phoenixcontact.com/de/produkte/0203247>

Fixed bridge, pitch: 10 mm, color: silver



# Feed-through terminal block - UK 10 N

3005073

<https://www.phoenixcontact.com/de/produkte/3005073>

## Fixed bridge

Fixed bridge - FB 4-10 - 0203182

<https://www.phoenixcontact.com/de/produkte/0203182>



Fixed bridge, color: silver

---

## Fixed bridge

Fixed bridge - FB 10-10 - 0203179

<https://www.phoenixcontact.com/de/produkte/0203179>



Fixed bridge, pitch: 10 mm, color: silver



# Feed-through terminal block - UK 10 N

3005073

<https://www.phoenixcontact.com/de/produkte/3005073>



## Fixed bridge

Fixed bridge - FB 3-10 - 0203140

<https://www.phoenixcontact.com/de/produkte/0203140>



Fixed bridge, pitch: 10 mm, color: silver

---


## Insertion bridge

Insertion bridge - EB 2-10 - 0203153

<https://www.phoenixcontact.com/de/produkte/0203153>



Insertion bridge, pitch: 10 mm, color: gray

 Max. current carrying capacity: 70 A

# Feed-through terminal block - UK 10 N

3005073

<https://www.phoenixcontact.com/de/produkte/3005073>




## Insertion bridge

Insertion bridge - EB 3-10 - 0203328

<https://www.phoenixcontact.com/de/produkte/0203328>

Insertion bridge, pitch: 10 mm, color: gray



 Max. current carrying capacity: 70 A

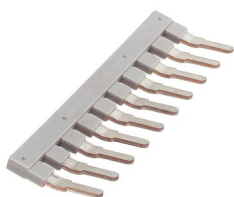
---


## Insertion bridge

Insertion bridge - EB 10-10 - 0203137

<https://www.phoenixcontact.com/de/produkte/0203137>

Insertion bridge, pitch: 10 mm, color: gray



 Max. current carrying capacity: 70 A

# Feed-through terminal block - UK 10 N

3005073

<https://www.phoenixcontact.com/de/produkte/3005073>


## Bridge

Bridge - ISSBI 10-10 - 0301521

<https://www.phoenixcontact.com/de/produkte/0301521>



Bridge, pitch: 10 mm, color: silver

 Max. current carrying capacity: 52 A

---

## End cover

End cover - D-UK 4/10 - 3003020

<https://www.phoenixcontact.com/de/produkte/3003020>



End cover, length: 42.5 mm, width: 1.8 mm, height: 35.9 mm, color: gray

# Feed-through terminal block - UK 10 N

3005073

<https://www.phoenixcontact.com/de/produkte/3005073>

## DIN rail perforated

DIN rail perforated - NS 32 PERF 2000MM-VPE 10 - 1201002

<https://www.phoenixcontact.com/de/produkte/1201002>



DIN rail perforated, acc. to EN 60715, material: Steel, galvanized, passivated with a thick layer, G profile, color: silver, Pack of 10 (20 m)

---

## End cover

End cover - D-UK 4/10 BU - 3003101

<https://www.phoenixcontact.com/de/produkte/3003101>



End cover, length: 42.5 mm, width: 1.8 mm, height: 47 mm, color: blue

# Feed-through terminal block - UK 10 N

3005073

<https://www.phoenixcontact.com/de/produkte/3005073>

## DIN rail, unperforated

DIN rail, unperforated - NS 32 UNPERF 2000MM-VPE 10 - 1201015

<https://www.phoenixcontact.com/de/produkte/1201015>



DIN rail, unperforated, acc. to EN 60715, material: Steel, galvanized, passivated with a thick layer, G profile, color: silver, Pack of 10 (20 m)

---

## Warning label

Warning label - WS 5-10 - 1004429

<https://www.phoenixcontact.com/de/produkte/1004429>



Warning label, Plate, yellow/black, labeled: Lightning flash and warning in English, mounting type: plug in, for terminal block width: 10 mm, diameter: 0 mm

# Feed-through terminal block - UK 10 N

3005073

<https://www.phoenixcontact.com/de/produkte/3005073>

## DIN rail perforated

DIN rail perforated - NS 35/ 7,5 PERF 2000MM - 0801733

<https://www.phoenixcontact.com/de/produkte/0801733>



DIN rail perforated, acc. to EN 60715, material: Steel, galvanized, passivated with a thick layer, Standard profile, color: silver, Pack of 25 (50 m)

---

## Warning label

Warning label - WS 4-10 - 1004225

<https://www.phoenixcontact.com/de/produkte/1004225>



Warning label, Plate, yellow/black, labeled: Lightning flash and warning in English, mounting type: plug in, for terminal block width: 10 mm, diameter: 0 mm

# Feed-through terminal block - UK 10 N

3005073

<https://www.phoenixcontact.com/de/produkte/3005073>



## DIN rail, unperforated

DIN rail, unperforated - NS 35/ 7,5 UNPERF 2000MM - 0801681

<https://www.phoenixcontact.com/de/produkte/0801681>



DIN rail, unperforated, acc. to EN 60715, material: Steel, galvanized, passivated with a thick layer, Standard profile, color: silver, Pack of 25 (50 m)

---

## Short-circuit connector

Short-circuit connector - KSS 10 - 0310541

<https://www.phoenixcontact.com/de/produkte/0310541>



Short-circuit connector, pitch: 10 mm, color: black

# Feed-through terminal block - UK 10 N

3005073

<https://www.phoenixcontact.com/de/produkte/3005073>

## DIN rail perforated

DIN rail perforated - NS 35/ 7,5 WH PERF 2000MM - 1204119

<https://www.phoenixcontact.com/de/produkte/1204119>



DIN rail perforated, acc. to EN 60715, material: Steel, Galvanized, white passivated, Standard profile, color: silver, Pack of 25 (50 m)

---

## Step bracket

Step bracket - STL 10N/5N - 0204110

<https://www.phoenixcontact.com/de/produkte/0204110>



Step bracket, pitch: 5 mm, color: silver



# Feed-through terminal block - UK 10 N

3005073

<https://www.phoenixcontact.com/de/produkte/3005073>



## DIN rail, unperforated

DIN rail, unperforated - NS 35/ 7,5 WH UNPERF 2000MM-VPE 10 - 1204122

<https://www.phoenixcontact.com/de/produkte/1204122>



DIN rail, unperforated, acc. to EN 60715, material: Steel, Galvanized, white passivated, Standard profile, color: silver, Pack of 10 (20 m)

---

## Separating plate

Separating plate - TS-K - 1302215

<https://www.phoenixcontact.com/de/produkte/1302215>



Separating plate, length: 22 mm, width: 0.5 mm, height: 22 mm, color: gray

# Feed-through terminal block - UK 10 N

3005073

<https://www.phoenixcontact.com/de/produkte/3005073>

## DIN rail, unperforated

DIN rail, unperforated - NS 35/ 7,5 AL UNPERF 2000MM - 0801704

<https://www.phoenixcontact.com/de/produkte/0801704>



DIN rail, unperforated, acc. to EN 60715, material: Aluminum, uncoated, Standard profile, color: silver, Pack of 25 (50 m)

---

## Partition plate

Partition plate - ATP-UK - 3003224

<https://www.phoenixcontact.com/de/produkte/3003224>



Partition plate, length: 56 mm, width: 1.5 mm, height: 45.7 mm, color: gray

# Feed-through terminal block - UK 10 N

3005073

<https://www.phoenixcontact.com/de/produkte/3005073>

## DIN rail perforated

DIN rail perforated - NS 35/ 7,5 ZN PERF 2000MM - 1206421

<https://www.phoenixcontact.com/de/produkte/1206421>



DIN rail perforated, acc. to EN 60715, material: Steel, galvanized, Standard profile, color: silver, Pack of 25 (50 m)

---

## Marker card

Marker card - SBS10:UNBEDRUCKT - 1007248

<https://www.phoenixcontact.com/de/produkte/1007248>



Marker card, Card, white, unlabeled, can be labeled with: Marker pen, perforated, mounting type: snapped, snap into flat marker groove, for terminal block width: 10 mm, lettering field size: 6 x 10.1 mm, Number of individual labels: 250

# Feed-through terminal block - UK 10 N

3005073

<https://www.phoenixcontact.com/de/produkte/3005073>



## DIN rail, unperforated

DIN rail, unperforated - NS 35/ 7,5 ZN UNPERF 2000MM - 1206434

<https://www.phoenixcontact.com/de/produkte/1206434>



DIN rail, unperforated, acc. to EN 60715, material: Steel, galvanized, Standard profile, color: silver, Pack of 25 (50 m)

---

## Screwdriver

Screwdriver - SZS 1,0X4,0 VDE - 1205066

<https://www.phoenixcontact.com/de/produkte/1205066>



Screwdriver, slot-headed, VDE insulated, size: 1.0 x 4.0 x 100 mm, 2-component grip, with non-slip grip

# Feed-through terminal block - UK 10 N

3005073

<https://www.phoenixcontact.com/de/produkte/3005073>



## DIN rail, unperforated

DIN rail, unperforated - NS 35/ 7,5 CU UNPERF 2000MM-VPE 10 - 0801762

<https://www.phoenixcontact.com/de/produkte/0801762>



DIN rail, unperforated, acc. to EN 60715, material: Copper, uncoated, Standard profile, color: copper-colored, Pack of 10 (20 m)

---

## End cap

End cap - NS 35/ 7,5 CAP - 1206560

<https://www.phoenixcontact.com/de/produkte/1206560>

DIN rail end piece, for DIN rail NS 35/7.5



# Feed-through terminal block - UK 10 N

3005073

<https://www.phoenixcontact.com/de/produkte/3005073>

## DIN rail perforated

DIN rail perforated - NS 35/15 PERF 2000MM - 1201730

<https://www.phoenixcontact.com/de/produkte/1201730>



DIN rail perforated, similar to EN 60715, material: Steel, galvanized, passivated with a thick layer, Standard profile, color: silver, Pack of 25 (50 m)

---

## Bridge bar isolator

Bridge bar isolator - IS-K 10 - 1303337

<https://www.phoenixcontact.com/de/produkte/1303337>



Bridge bar isolator, color: gray

# Feed-through terminal block - UK 10 N

3005073

<https://www.phoenixcontact.com/de/produkte/3005073>

## DIN rail, unperforated

DIN rail, unperforated - NS 35/15 UNPERF 2000MM - 1201714

<https://www.phoenixcontact.com/de/produkte/1201714>



DIN rail, unperforated, similar to EN 60715, material: Steel, galvanized, passivated with a thick layer, Standard profile, color: silver, Pack of 25 (50 m)

---

## DIN rail perforated

DIN rail perforated - NS 35/15 WH PERF 2000MM - 0806602

<https://www.phoenixcontact.com/de/produkte/0806602>



DIN rail perforated, similar to EN 60715, material: Steel, Galvanized, white passivated, Standard profile, color: white, Pack of 25 (50 m)

# Feed-through terminal block - UK 10 N

3005073

<https://www.phoenixcontact.com/de/produkte/3005073>

## DIN rail, unperforated

DIN rail, unperforated - NS 35/15 WH UNPERF 2000MM-VPE 10 - 1204135

<https://www.phoenixcontact.com/de/produkte/1204135>



DIN rail, unperforated, similar to EN 60715, material: Steel, Galvanized, white passivated, Standard profile, color: silver, Pack of 10 (20 m)

---

## DIN rail, unperforated

DIN rail, unperforated - NS 35/15 AL UNPERF 2000MM - 1201756

<https://www.phoenixcontact.com/de/produkte/1201756>



DIN rail, unperforated, similar to EN 60715, material: Aluminum, uncoated, Standard profile, color: silver



# Feed-through terminal block - UK 10 N

3005073

<https://www.phoenixcontact.com/de/produkte/3005073>

## DIN rail perforated

DIN rail perforated - NS 35/15 ZN PERF 2000MM - 1206599

<https://www.phoenixcontact.com/de/produkte/1206599>



DIN rail perforated, similar to EN 60715, material: Steel, galvanized, Standard profile, color: silver, Pack of 25 (50 m)

---

## DIN rail, unperforated

DIN rail, unperforated - NS 35/15 ZN UNPERF 2000MM - 1206586

<https://www.phoenixcontact.com/de/produkte/1206586>



DIN rail, unperforated, similar to EN 60715, material: Steel, galvanized, Standard profile, color: silver, Pack of 25 (50 m)

# Feed-through terminal block - UK 10 N

3005073

<https://www.phoenixcontact.com/de/produkte/3005073>

## DIN rail, unperforated

DIN rail, unperforated - NS 35/15 CU UNPERF 2000MM-VPE 10 - 1201895

<https://www.phoenixcontact.com/de/produkte/1201895>



DIN rail, unperforated, similar to EN 60715, material: Copper, uncoated, Standard profile, color: copper-colored, Pack of 10 (20 m)

---

## End cap

End cap - NS 35/15 CAP - 1206573

<https://www.phoenixcontact.com/de/produkte/1206573>

DIN rail end piece, for DIN rail NS 35/15



# Feed-through terminal block - UK 10 N

3005073

<https://www.phoenixcontact.com/de/produkte/3005073>

## DIN rail, unperforated

DIN rail, unperforated - NS 35/15-2,3 UNPERF 2000MM-VPE 10 - 1201798

<https://www.phoenixcontact.com/de/produkte/1201798>



DIN rail, unperforated, acc. to EN 60715, material: Steel, galvanized, passivated with a thick layer, Standard profile 2.3 mm, color: silver, Pack of 10 (20 m)

---

## Zack marker strip

Zack marker strip - ZB 10:UNBEDRUCKT - 1053001

<https://www.phoenixcontact.com/de/produkte/1053001>



Zack marker strip, Strip, white, unlabeled, can be labeled with: PLOTMARK, CMS-P1-PLOTTER, mounting type: snapped, for terminal block width: 10.2 mm, lettering field size: 10.5 mm x 10.15 mm, Number of individual labels: 10

# Feed-through terminal block - UK 10 N

3005073

<https://www.phoenixcontact.com/de/produkte/3005073>

## Zack marker strip

Zack marker strip - ZB 10 CUS - 0824941

<https://www.phoenixcontact.com/de/produkte/0824941>



Zack marker strip, can be ordered: Strip, white, labeled according to customer specifications, mounting type: snap into tall marker groove, for terminal block width: 10.2 mm, lettering field size: 10.15 x 10.5 mm, Number of individual labels: 10

---

## Zack marker strip

Zack marker strip - ZB10,LGS:FORTL.ZAHLEN - 1053014

<https://www.phoenixcontact.com/de/produkte/1053014>



Zack marker strip, Strip, white, labeled, can be labeled with: CMS-P1-PLOTTER, printed horizontally: consecutive numbers 1 ... 10, 11 ... 20, etc. up to 91 ... 100, mounting type: snapped, for terminal block width: 10.2 mm, lettering field size: 10.15 x 10.5 mm, Number of individual labels: 10

# Feed-through terminal block - UK 10 N

3005073

<https://www.phoenixcontact.com/de/produkte/3005073>

## Zack marker strip

Zack marker strip - ZB10,QR:FORTL.ZAHLEN - 1053027

<https://www.phoenixcontact.com/de/produkte/1053027>



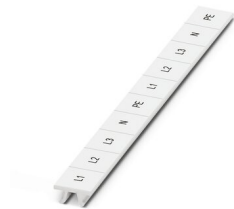
Zack marker strip, Strip, white, labeled, can be labeled with: CMS-P1-PLOTTER, Printed vertically: consecutive numbers 1 ... 10, 11 ... 20, etc. up to 91 ... 100, mounting type: snapped, for terminal block width: 10.2 mm, lettering field size: 10.15 x 10.5 mm, Number of individual labels: 10

---

## Marker for terminal blocks

Marker for terminal blocks - ZB10,LGS:L1-N,PE - 1053412

<https://www.phoenixcontact.com/de/produkte/1053412>



Marker for terminal blocks, Strip, white, labeled, can be labeled with: CMS-P1-PLOTTER, horizontal: L1, L2, L3, N, PE, L1, L2, L3, N, PE, mounting type: snapped, for terminal block width: 10.2 mm, lettering field size: 10.15 x 10.5 mm, Number of individual labels: 10

# Feed-through terminal block - UK 10 N

3005073

<https://www.phoenixcontact.com/de/produkte/3005073>

## Marker for terminal blocks

Marker for terminal blocks - ZB10,LGS:U-N - 1053438

<https://www.phoenixcontact.com/de/produkte/1053438>



Marker for terminal blocks, Strip, white, labeled, can be labeled with: CMS-P1-PLOTTER, horizontal: U, V, W, N, GND, U, V, W, N, GND, mounting type: snapped, for terminal block width: 10.2 mm, lettering field size: 10.15 x 10.5 mm, Number of individual labels: 10

---

## Marker for terminal blocks

Marker for terminal blocks - UC-TM 10 - 0818069

<https://www.phoenixcontact.com/de/produkte/0818069>



Marker for terminal blocks, Sheet, white, unlabeled, can be labeled with: BLUEMARK ID COLOR, BLUEMARK ID, BLUEMARK CLED, PLOTMARK, CMS-P1-PLOTTER, mounting type: snapped, for terminal block width: 10.2 mm, lettering field size: 9.6 x 10.5 mm, Number of individual labels: 48

# Feed-through terminal block - UK 10 N

3005073

<https://www.phoenixcontact.com/de/produkte/3005073>

## Marker for terminal blocks

Marker for terminal blocks - UC-TM 10 CUS - 0824605

<https://www.phoenixcontact.com/de/produkte/0824605>



Marker for terminal blocks, can be ordered: by sheet, white, labeled according to customer specifications, mounting type: snap into tall marker groove, for terminal block width: 10.2 mm, lettering field size: 9.6 x 10.5 mm, Number of individual labels: 48

---

## Marker for terminal blocks

Marker for terminal blocks - UCT-TM 10 - 0829142

<https://www.phoenixcontact.com/de/produkte/0829142>



Marker for terminal blocks, Sheet, white, unlabeled, can be labeled with: TOPMARK NEO, TOPMARK LASER, BLUEMARK ID COLOR, BLUEMARK ID, BLUEMARK CLED, THERMOMARK PRIME, THERMOMARK CARD 2.0, THERMOMARK CARD, mounting type: snapped, for terminal block width: 10.2 mm, lettering field size: 8.9 x 9.6 mm, Number of individual labels: 36

# Feed-through terminal block - UK 10 N

3005073

<https://www.phoenixcontact.com/de/produkte/3005073>



## Marker for terminal blocks

Marker for terminal blocks - UCT-TM 10 CUS - 0829623

<https://www.phoenixcontact.com/de/produkte/0829623>



Marker for terminal blocks, can be ordered: by sheet, white, labeled according to customer specifications, mounting type: snap into tall marker groove, for terminal block width: 10.2 mm, lettering field size: 8.9 x 9.6 mm, Number of individual labels: 36

---

## Test plugs

Test plugs - PS-MT - 0311647

<https://www.phoenixcontact.com/de/produkte/0311647>



Test plugs, color: silver



# Feed-through terminal block - UK 10 N

3005073

<https://www.phoenixcontact.com/de/produkte/3005073>



## Insulating sleeve

Insulating sleeve - PS-IH WH - 0311566

<https://www.phoenixcontact.com/de/produkte/0311566>



Insulating sleeve, color: white

---

## Insulating sleeve

Insulating sleeve - PS-IH RD - 0311579

<https://www.phoenixcontact.com/de/produkte/0311579>



Insulating sleeve, color: red

# Feed-through terminal block - UK 10 N

3005073

<https://www.phoenixcontact.com/de/produkte/3005073>



## Insulating sleeve

Insulating sleeve - PS-IH BU - 0311582

<https://www.phoenixcontact.com/de/produkte/0311582>



Insulating sleeve, color: blue

---

## Insulating sleeve

Insulating sleeve - PS-IH YE - 0311595

<https://www.phoenixcontact.com/de/produkte/0311595>



Insulating sleeve, color: yellow

# Feed-through terminal block - UK 10 N

3005073

<https://www.phoenixcontact.com/de/produkte/3005073>



## Insulating sleeve

Insulating sleeve - PS-IH GN - 0311605

<https://www.phoenixcontact.com/de/produkte/0311605>



Insulating sleeve, color: green

---

## Insulating sleeve

Insulating sleeve - PS-IH GY - 0311621

<https://www.phoenixcontact.com/de/produkte/0311621>



Insulating sleeve, color: gray

# Feed-through terminal block - UK 10 N

3005073

<https://www.phoenixcontact.com/de/produkte/3005073>



## Insulating sleeve

Insulating sleeve - PS-IH BK - 0311634

<https://www.phoenixcontact.com/de/produkte/0311634>



Insulating sleeve, color: black

---

## Insulating sleeve

Insulating sleeve - PS-IH VT - 0311618

<https://www.phoenixcontact.com/de/produkte/0311618>



Insulating sleeve, color: violet

# Feed-through terminal block - UK 10 N

3005073

<https://www.phoenixcontact.com/de/produkte/3005073>

## End clamp

End clamp - CLIPFIX 35 - 3022218

<https://www.phoenixcontact.com/de/produkte/3022218>



Quick mounting end clamp for NS 35/7,5 DIN rail or NS 35/15 DIN rail, with marking option, width: 9.5 mm, color: gray

---

## End clamp

End clamp - CLIPFIX 35-5 - 3022276

<https://www.phoenixcontact.com/de/produkte/3022276>



Quick mounting end clamp for NS 35/7,5 DIN rail or NS 35/15 DIN rail, with marking option, with parking option for FBS...5, FBS...6, KSS 5, KSS 6, width: 5.15 mm, color: gray

# Feed-through terminal block - UK 10 N

3005073

<https://www.phoenixcontact.com/de/produkte/3005073>

## End clamp

End clamp - E/NS 35 N - 0800886

<https://www.phoenixcontact.com/de/produkte/0800886>

End clamp, width: 9.5 mm, color: gray



---

## End clamp

End clamp - E/UK - 1201442

<https://www.phoenixcontact.com/de/produkte/1201442>

End clamp, material: PA, color: gray, Mounting on a DIN rail NS 32 or NS 35



# Feed-through terminal block - UK 10 N

3005073

<https://www.phoenixcontact.com/de/produkte/3005073>



## End clamp

End clamp - E/UK 1 - 1201413

<https://www.phoenixcontact.com/de/produkte/1201413>



End clamps, for supporting the ends of double-level and three-level terminal blocks, width: 10 mm, color: gray

---

## Female test connector

Female test connector - PSBJ 4/15/6 FARBLOS - 0303419

<https://www.phoenixcontact.com/de/produkte/0303419>



Female test connector, color: transparent

# Feed-through terminal block - UK 10 N

3005073

<https://www.phoenixcontact.com/de/produkte/3005073>



## Female test connector

Female test connector - PSBJ 4/15/6 WH - 0303312

<https://www.phoenixcontact.com/de/produkte/0303312>



Female test connector, color: white

---

## Female test connector

Female test connector - PSBJ 4/15/6 RD - 0303325

<https://www.phoenixcontact.com/de/produkte/0303325>



Female test connector, color: red



# Feed-through terminal block - UK 10 N

3005073

<https://www.phoenixcontact.com/de/produkte/3005073>



## Female test connector

Female test connector - PSBJ 4/15/6 BU - 0303354

<https://www.phoenixcontact.com/de/produkte/0303354>



Female test connector, color: blue

---

## Female test connector

Female test connector - PSBJ 4/15/6 YE - 0303367

<https://www.phoenixcontact.com/de/produkte/0303367>



Female test connector, color: yellow

# Feed-through terminal block - UK 10 N

3005073

<https://www.phoenixcontact.com/de/produkte/3005073>



## Female test connector

Female test connector - PSBJ 4/15/6 GN - 0303370

<https://www.phoenixcontact.com/de/produkte/0303370>



Female test connector, color: green

---

## Female test connector

Female test connector - PSBJ 4/15/6 VT - 0303383

<https://www.phoenixcontact.com/de/produkte/0303383>



Female test connector, color: violet

# Feed-through terminal block - UK 10 N

3005073

<https://www.phoenixcontact.com/de/produkte/3005073>



## Female test connector

Female test connector - PSBJ 4/15/6 GY - 0303396

<https://www.phoenixcontact.com/de/produkte/0303396>



Female test connector, color: gray

---

## Female test connector

Female test connector - PSBJ 4/15/6 BK - 0303406

<https://www.phoenixcontact.com/de/produkte/0303406>



Female test connector, color: black

# Feed-through terminal block - UK 10 N

3005073

<https://www.phoenixcontact.com/de/produkte/3005073>



## Female test connector

Female test connector - PSB 4/7/6 - 0303299

<https://www.phoenixcontact.com/de/produkte/0303299>



Female test connector, color: silver

---

Phoenix Contact 2022 © - all rights reserved

<https://www.phoenixcontact.com>

PHOENIX CONTACT Deutschland GmbH

Flachsmarktstraße 8

D-32825 Blomberg

+49 52 35/3-1 20 00

[info@phoenixcontact.de](mailto:info@phoenixcontact.de)