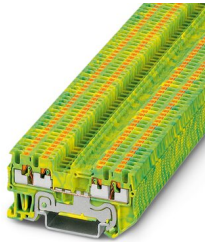


Ground modular terminal block - PT 1,5/S-QUATTRO-PE

3208333

<https://www.phoenixcontact.com/de/produkte/3208333>

Please be informed that the data shown in this PDF document is generated from our Online Catalog. Please find the complete data in the user documentation. Our General Terms of Use for Downloads are valid.



Ground modular terminal block, number of connections: 4, connection method: Push-in connection, 1 level, cross section: 0.14 mm² - 1.5 mm², mounting type: NS 35/7,5, NS 35/15, color: green-yellow

Your advantages

- The compact design and front connection enable wiring in a confined space
- The Push-in connection terminal blocks are characterized by the system features of the CLIPLINE complete system and by easy and tool-free wiring of conductors with ferrules or solid conductors
- In addition to the testing facility in the double function shaft, all terminal blocks provide an additional test connection
- Tested for railway applications

Ground modular terminal block - PT 1,5/S-QUATTRO-PE



3208333

<https://www.phoenixcontact.com/de/produkte/3208333>

Commercial Data

Item number	3208333
Packing unit	50 pc
Minimum order quantity	50 pc
Sales Key	A1 - Reihenklemmen
Product Key	BE2223
Catalog Page	Page 39 (C-1-2019)
GTIN	4046356564304
Weight per Piece (including packing)	7,205 g
Weight per Piece (excluding packing)	7,205 g
Customs tariff number	85369010
Country of origin	DE

Ground modular terminal block - PT 1,5/S-QUATTRO-PE



3208333

<https://www.phoenixcontact.com/de/produkte/3208333>

Technical Data

Product properties

Product type	Ground terminal block
Area of application	Railway industry
	Machine building
	Plant engineering
Number of connections	4
Number of rows	1

Insulation characteristics

Overvoltage category	III
Degree of pollution	3

Electrical properties

Rated surge voltage	6 kV
Maximum power dissipation for nominal condition	0.56 W

Connection data

Grounding foot	Yes
Number of connections per level	4
Nominal cross section	1.5 mm ²

1 level

Note	Please observe the current carrying capacity of the DIN rails.
Stripping length	8 mm ... 10 mm
Internal cylindrical gage	A1 / B1
Conductor cross section solid	0.14 mm ² ... 1.5 mm ²
Cross section AWG	26 ... 14
Conductor cross section flexible	0.14 mm ² ... 1.5 mm ²
Conductor cross section, flexible [AWG]	26 ... 14
Flexible conductor cross section flexible (ferrule, w/o plastic sleeve)	0.14 mm ² ... 1.5 mm ²
Flexible conductor cross section (ferrule with plastic sleeve)	0.14 mm ² ... 1 mm ² Using the AI-S 1-8 TQ ferrule, Item No. 1200293, is recommended

1 level Connection cross sections directly pluggable

Conductor cross section solid	0.25 mm ² ... 1.5 mm ²
Flexible conductor cross section flexible (ferrule, w/o plastic sleeve)	0.34 mm ² ... 1.5 mm ²
Flexible conductor cross section (ferrule with plastic sleeve)	0.34 mm ² ... 1 mm ²

Ex data

Rated data (ATEX/IECEX)

ATEX certificate	SEV 13 ATEX 0159 U
------------------	--------------------

Ground modular terminal block - PT 1,5/S-QUATTRO-PE



3208333

<https://www.phoenixcontact.com/de/produkte/3208333>

IEC Ex certificate	IECEX SEV 13.0005 U
Identification	□ II 2 GD Ex eb IIC Gb
Operating temperature range	-60 °C ... 110 °C
Ex-certified accessories	3208375 D-PT 1,5/S-QUATTRO 1204504 SZF 0-0,4X2,5 3022276 CLIPFIX 35-5 3022218 CLIPFIX 35

Ex connection data General

Nominal cross section	1.5 mm ²
Rated cross section AWG	16
Connection capacity rigid	0.14 mm ² ... 1.5 mm ²
Connection capacity AWG	26 ... 16
Connection capacity flexible	0.14 mm ² ... 1.5 mm ²
Connection capacity AWG	26 ... 16

Dimensions

Width	3.5 mm
End cover width	2.2 mm
Height	30.5 mm
Height NS 35/15	39.5 mm
Height NS 35/7,5	32 mm
Length	63.2 mm

Material specifications

Color	green-yellow
Flammability rating according to UL 94	V0
Insulating material group	I
Insulating material	PA
Static insulating material application in cold	-60 °C
Temperature index of insulation material (DIN EN 60216-1 (VDE 0304-21))	130 °C
Relative insulation material temperature index (Elec., UL 746 B)	130 °C
Fire protection for rail vehicles (DIN EN 45545-2) R22	HL 1 - HL 3
Fire protection for rail vehicles (DIN EN 45545-2) R23	HL 1 - HL 3
Fire protection for rail vehicles (DIN EN 45545-2) R24	HL 1 - HL 3
Fire protection for rail vehicles (DIN EN 45545-2) R26	HL 1 - HL 3
Calorimetric heat release NFPA 130 (ASTM E 1354)	28 MJ/kg
Surface flammability NFPA 130 (ASTM E 162)	passed
Specific optical density of smoke NFPA 130 (ASTM E 662)	passed
Smoke gas toxicity NFPA 130 (SMP 800C)	passed

Mechanical properties

Mechanical data

Ground modular terminal block - PT 1,5/S-QUATTRO-PE



3208333

<https://www.phoenixcontact.com/de/produkte/3208333>

Open side panel	Yes
-----------------	-----

Environmental and real-life conditions

Oscillation/broadband noise

Specification	DIN EN 50155 (VDE 0115-200):2008-03
Spectrum	Service life test category 2, bogie-mounted
Frequency	$f_1 = 5 \text{ Hz}$ to $f_2 = 250 \text{ Hz}$
ASD level	$6.12 \text{ (m/s}^2\text{)}^2\text{/Hz}$
Acceleration	3.12g
Test duration per axis	5 h
Test directions	X-, Y- and Z-axis
Result	Test passed

Shocks

Specification	DIN EN 50155 (VDE 0115-200):2008-03
Pulse shape	Half-sine
Acceleration	30g
Shock duration	18 ms
Number of shocks per direction	3
Test directions	X-, Y- and Z-axis (pos. and neg.)
Result	Test passed

Ambient conditions

Ambient temperature (operation)	-60 °C ... 105 °C (max. short-term operating temperature RTI Elec.)
Ambient temperature (storage/transport)	-25 °C ... 60 °C (for a short time, not exceeding 24 h, -60 °C to +70 °C)
Ambient temperature (assembly)	-5 °C ... 70 °C
Ambient temperature (actuation)	-5 °C ... 70 °C
Permissible humidity (storage/transport)	30 % ... 70 %

Standards and regulations

Connection in acc. with standard	IEC 60947-7-2
----------------------------------	---------------

Mounting

Mounting type	NS 35/7,5
	NS 35/15

Ground modular terminal block - PT 1,5/S-QUATTRO-PE

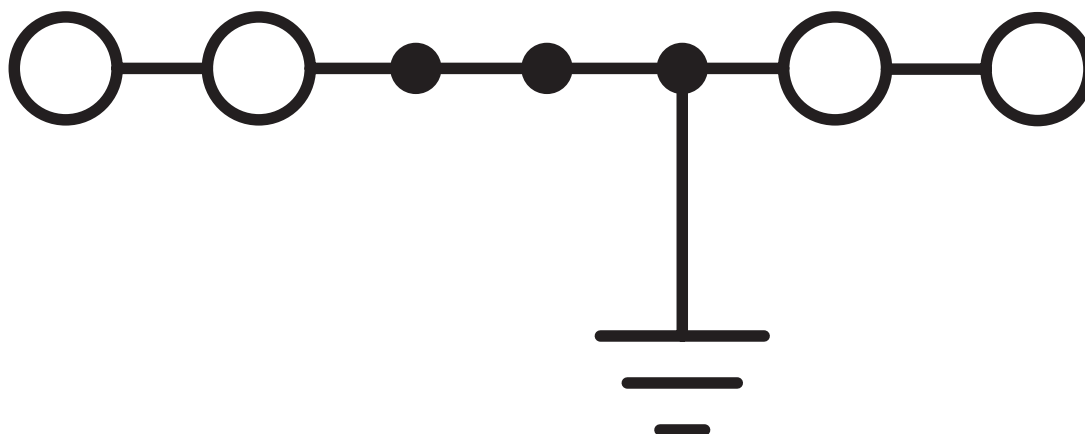


3208333

<https://www.phoenixcontact.com/de/produkte/3208333>

Drawings

Circuit diagram



Ground modular terminal block - PT 1,5/S-QUATTRO-PE



3208333

<https://www.phoenixcontact.com/de/produkte/3208333>

Approvals

DNV

Approval ID: TAE00003JE



CSA

Approval ID: 13631

Nominal Voltage U_N

Nominal Current I_N

Cross Section AWG

Cross Section mm^2

26 - 14

-



EAC

Approval ID: RU C-DE.AI30.B.01102



cULus Recognized

Approval ID: E60425

Nominal Voltage U_N

Nominal Current I_N

Cross Section AWG

Cross Section mm^2

Use group B

26 - 14

-

Use group C

26 - 14

-

Use group D

26 - 14

-



LR

Approval ID: 12/20038 (E3)



NK

Approval ID: 14ME0912



RS

Approval ID: 17.00013.272



BV

Approval ID: 39980/B0 BV



VDE Zeichengenehmigung

Approval ID: 40039744

Nominal Voltage U_N

Nominal Current I_N

Cross Section AWG

Cross Section mm^2

-

0.14 - 1.5

Ground modular terminal block - PT 1,5/S-QUATTRO-PE



3208333

<https://www.phoenixcontact.com/de/produkte/3208333>

ABS

Approval ID: 21-2192245-PDA



EAC Ex

Approval ID: RU C-DE.AB72.B.02351



IECEx

Approval ID: IECEx SEV13.0005U



ATEX

Approval ID: SEV13ATEX0159U



CCC

Approval ID: 2020322313000631



NEPSI

Approval ID: GYJ20.1198U

Ground modular terminal block - PT 1,5/S-QUATTRO-PE



3208333

<https://www.phoenixcontact.com/de/produkte/3208333>

Classifications

ECLASS

ECLASS-9.0	27141141
ECLASS-10.0.1	27141141
ECLASS-11.0	27141141

ETIM

ETIM 8.0	EC000901
----------	----------

UNSPSC

UNSPSC 21.0	39121400
-------------	----------

Ground modular terminal block - PT 1,5/S-QUATTRO-PE



3208333

<https://www.phoenixcontact.com/de/produkte/3208333>

Environmental Product Compliance

China RoHS	Environmentally friendly use period: unlimited = EFUP-e
	No hazardous substances above threshold values

Ground modular terminal block - PT 1,5/S-QUATTRO-PE

3208333

<https://www.phoenixcontact.com/de/produkte/3208333>

Accessories

Plug-in bridge

Plug-in bridge - FBS 2-3,5 - 3213014

<https://www.phoenixcontact.com/de/produkte/3213014>



Plug-in bridge, pitch: 3.5 mm, color: red

Plug-in bridge

Plug-in bridge - FBS 3-3,5 - 3213027

<https://www.phoenixcontact.com/de/produkte/3213027>



Plug-in bridge, pitch: 3.5 mm, color: red

Ground modular terminal block - PT 1,5/S-QUATTRO-PE

3208333

<https://www.phoenixcontact.com/de/produkte/3208333>

Plug-in bridge

Plug-in bridge - FBS 4-3,5 - 3213030

<https://www.phoenixcontact.com/de/produkte/3213030>



Plug-in bridge, pitch: 3.5 mm, color: red

Plug-in bridge

Plug-in bridge - FBS 5-3,5 - 3213043

<https://www.phoenixcontact.com/de/produkte/3213043>



Plug-in bridge, pitch: 3.5 mm, color: red

Ground modular terminal block - PT 1,5/S-QUATTRO-PE

3208333

<https://www.phoenixcontact.com/de/produkte/3208333>

Plug-in bridge

Plug-in bridge - FBS 10-3,5 - 3213056

<https://www.phoenixcontact.com/de/produkte/3213056>



Plug-in bridge, pitch: 3.5 mm, color: red

Plug-in bridge

Plug-in bridge - FBS 20-3,5 - 3213069

<https://www.phoenixcontact.com/de/produkte/3213069>



Plug-in bridge, pitch: 3.5 mm, color: red

Ground modular terminal block - PT 1,5/S-QUATTRO-PE

3208333

<https://www.phoenixcontact.com/de/produkte/3208333>

Plug-in bridge

Plug-in bridge - FBS 2-3,5 BU - 3213086

<https://www.phoenixcontact.com/de/produkte/3213086>



Plug-in bridge, pitch: 3.5 mm, color: blue

Plug-in bridge

Plug-in bridge - FBS 3-3,5 BU - 3213099

<https://www.phoenixcontact.com/de/produkte/3213099>



Plug-in bridge, pitch: 3.5 mm, color: blue

Ground modular terminal block - PT 1,5/S-QUATTRO-PE

3208333

<https://www.phoenixcontact.com/de/produkte/3208333>

Plug-in bridge

Plug-in bridge - FBS 4-3,5 BU - 3213109

<https://www.phoenixcontact.com/de/produkte/3213109>



Plug-in bridge, pitch: 3.5 mm, color: blue

Plug-in bridge

Plug-in bridge - FBS 5-3,5 BU - 3213112

<https://www.phoenixcontact.com/de/produkte/3213112>



Plug-in bridge, pitch: 3.5 mm, color: blue

Ground modular terminal block - PT 1,5/S-QUATTRO-PE

3208333

<https://www.phoenixcontact.com/de/produkte/3208333>

Plug-in bridge

Plug-in bridge - FBS 10-3,5 BU - 3213125

<https://www.phoenixcontact.com/de/produkte/3213125>



Plug-in bridge, pitch: 3.5 mm, color: blue

Plug-in bridge

Plug-in bridge - FBS 20-3,5 BU - 3213138

<https://www.phoenixcontact.com/de/produkte/3213138>



Plug-in bridge, pitch: 3.5 mm, color: blue

Ground modular terminal block - PT 1,5/S-QUATTRO-PE

3208333

<https://www.phoenixcontact.com/de/produkte/3208333>

Plug-in bridge

Plug-in bridge - FBS 2-3,5 GY - 3213153

<https://www.phoenixcontact.com/de/produkte/3213153>



Plug-in bridge, pitch: 3.5 mm, color: gray

Plug-in bridge

Plug-in bridge - FBS 3-3,5 GY - 3213167

<https://www.phoenixcontact.com/de/produkte/3213167>



Plug-in bridge, pitch: 3.5 mm, color: gray

Ground modular terminal block - PT 1,5/S-QUATTRO-PE

3208333

<https://www.phoenixcontact.com/de/produkte/3208333>

Plug-in bridge

Plug-in bridge - FBS 4-3,5 GY - 3213180

<https://www.phoenixcontact.com/de/produkte/3213180>



Plug-in bridge, pitch: 3.5 mm, color: gray

Plug-in bridge

Plug-in bridge - FBS 5-3,5 GY - 3213183

<https://www.phoenixcontact.com/de/produkte/3213183>



Plug-in bridge, pitch: 3.5 mm, color: gray

Ground modular terminal block - PT 1,5/S-QUATTRO-PE

3208333

<https://www.phoenixcontact.com/de/produkte/3208333>

Plug-in bridge

Plug-in bridge - FBS 10-3,5 GY - 3213196

<https://www.phoenixcontact.com/de/produkte/3213196>



Plug-in bridge, pitch: 3.5 mm, color: gray

Plug-in bridge

Plug-in bridge - FBS 20-3,5 GY - 3213206

<https://www.phoenixcontact.com/de/produkte/3213206>



Plug-in bridge, pitch: 3.5 mm, color: gray

Ground modular terminal block - PT 1,5/S-QUATTRO-PE

3208333

<https://www.phoenixcontact.com/de/produkte/3208333>

Group marker label for terminal marking

Group marker label for terminal marking - GBS-ZB/26X6 - 0809298

<https://www.phoenixcontact.com/de/produkte/0809298>



Group marking label, snaps onto terminal center for screw, spring-cage and quick connection terminal blocks, labeled with ESL 26x6 mm or EST 25x6 mm, in the foot part with Zack marker strip, length: 29 mm

DIN rail perforated

DIN rail perforated - NS 35/ 7,5 PERF 2000MM - 0801733

<https://www.phoenixcontact.com/de/produkte/0801733>



DIN rail perforated, acc. to EN 60715, material: Steel, galvanized, passivated with a thick layer, Standard profile, color: silver, Pack of 25 (50 m)

Ground modular terminal block - PT 1,5/S-QUATTRO-PE



3208333

<https://www.phoenixcontact.com/de/produkte/3208333>

Screwdriver

Screwdriver - SZF 0-0,4X2,5 - 1204504

<https://www.phoenixcontact.com/de/produkte/1204504>



Actuation tool, for ST terminal blocks, also suitable for use as a bladed screwdriver, size: 0.4 x 2.5 x 75 mm, 2-component grip, with non-slip grip

DIN rail, unperforated

DIN rail, unperforated - NS 35/ 7,5 UNPERF 2000MM - 0801681

<https://www.phoenixcontact.com/de/produkte/0801681>



DIN rail, unperforated, acc. to EN 60715, material: Steel, galvanized, passivated with a thick layer, Standard profile, color: silver, Pack of 25 (50 m)

Ground modular terminal block - PT 1,5/S-QUATTRO-PE



3208333

<https://www.phoenixcontact.com/de/produkte/3208333>

Partition plate

Partition plate - ATP-ST QUATTRO - 3030815

<https://www.phoenixcontact.com/de/produkte/3030815>

Partition plate, length: 90.9 mm, width: 2 mm, height: 45 mm, color: gray



DIN rail perforated

DIN rail perforated - NS 35/ 7,5 WH PERF 2000MM - 1204119

<https://www.phoenixcontact.com/de/produkte/1204119>

DIN rail perforated, acc. to EN 60715, material: Steel, Galvanized, white passivated, Standard profile, color: silver, Pack of 25 (50 m)



Ground modular terminal block - PT 1,5/S-QUATTRO-PE

3208333

<https://www.phoenixcontact.com/de/produkte/3208333>

End cover

End cover - D-PT 1,5/S-QUATTRO - 3208375

<https://www.phoenixcontact.com/de/produkte/3208375>

End cover, length: 63.2 mm, width: 2.2 mm, height: 24.3 mm, color: gray



DIN rail, unperforated

DIN rail, unperforated - NS 35/ 7,5 WH UNPERF 2000MM-VPE 10 - 1204122

<https://www.phoenixcontact.com/de/produkte/1204122>

DIN rail, unperforated, acc. to EN 60715, material: Steel, Galvanized, white passivated, Standard profile, color: silver, Pack of 10 (20 m)



Ground modular terminal block - PT 1,5/S-QUATTRO-PE

3208333

<https://www.phoenixcontact.com/de/produkte/3208333>

Mounting material

Mounting material - PT-IL - 3208090

<https://www.phoenixcontact.com/de/produkte/3208090>

Operating decal for the push-in Technology



DIN rail, unperforated

DIN rail, unperforated - NS 35/ 7,5 AL UNPERF 2000MM - 0801704

<https://www.phoenixcontact.com/de/produkte/0801704>



DIN rail, unperforated, acc. to EN 60715, material: Aluminum, uncoated, Standard profile, color: silver, Pack of 25 (50 m)

Ground modular terminal block - PT 1,5/S-QUATTRO-PE



3208333

<https://www.phoenixcontact.com/de/produkte/3208333>

Actuation tool

Actuation tool - ST-BW 0 - 1200135

<https://www.phoenixcontact.com/de/produkte/1200135>

Actuation tool, for all 1.5 mm² spring cages from PT 1,5/S and FT 1,5/S



DIN rail perforated

DIN rail perforated - NS 35/ 7,5 ZN PERF 2000MM - 1206421

<https://www.phoenixcontact.com/de/produkte/1206421>



DIN rail perforated, acc. to EN 60715, material: Steel, galvanized, Standard profile, color: silver, Pack of 25 (50 m)

Ground modular terminal block - PT 1,5/S-QUATTRO-PE

3208333

<https://www.phoenixcontact.com/de/produkte/3208333>

End cover

End cover - D-PT 1,5/S-QUATTRO-0,8 OG - 1029591

<https://www.phoenixcontact.com/de/produkte/1029591>

End cover, length: 63.2 mm, width: 0.8 mm, height: 24.3 mm, color: orange



DIN rail, unperforated

DIN rail, unperforated - NS 35/ 7,5 ZN UNPERF 2000MM - 1206434

<https://www.phoenixcontact.com/de/produkte/1206434>



DIN rail, unperforated, acc. to EN 60715, material: Steel, galvanized, Standard profile, color: silver, Pack of 25 (50 m)

Ground modular terminal block - PT 1,5/S-QUATTRO-PE



3208333

<https://www.phoenixcontact.com/de/produkte/3208333>

Ferrule

Ferrule - AI-S 1 - 8 TQ - 1200293

<https://www.phoenixcontact.com/de/produkte/1200293>



Ferrule, S-Slimline, sleeve length: 8 mm, length: 14.5 mm, color: turquoise

DIN rail, unperforated

DIN rail, unperforated - NS 35/ 7,5 CU UNPERF 2000MM-VPE 10 - 0801762

<https://www.phoenixcontact.com/de/produkte/0801762>



DIN rail, unperforated, acc. to EN 60715, material: Copper, uncoated, Standard profile, color: copper-colored, Pack of 10 (20 m)

Ground modular terminal block - PT 1,5/S-QUATTRO-PE

3208333

<https://www.phoenixcontact.com/de/produkte/3208333>

End cap

End cap - NS 35/ 7,5 CAP - 1206560

<https://www.phoenixcontact.com/de/produkte/1206560>

DIN rail end piece, for DIN rail NS 35/7.5



DIN rail perforated

DIN rail perforated - NS 35/15 PERF 2000MM - 1201730

<https://www.phoenixcontact.com/de/produkte/1201730>



DIN rail perforated, similar to EN 60715, material: Steel, galvanized, passivated with a thick layer, Standard profile, color: silver, Pack of 25 (50 m)

Ground modular terminal block - PT 1,5/S-QUATTRO-PE

3208333

<https://www.phoenixcontact.com/de/produkte/3208333>

DIN rail, unperforated

DIN rail, unperforated - NS 35/15 UNPERF 2000MM - 1201714

<https://www.phoenixcontact.com/de/produkte/1201714>



DIN rail, unperforated, similar to EN 60715, material: Steel, galvanized, passivated with a thick layer, Standard profile, color: silver, Pack of 25 (50 m)

DIN rail perforated

DIN rail perforated - NS 35/15 WH PERF 2000MM - 0806602

<https://www.phoenixcontact.com/de/produkte/0806602>



DIN rail perforated, similar to EN 60715, material: Steel, Galvanized, white passivated, Standard profile, color: white, Pack of 25 (50 m)

Ground modular terminal block - PT 1,5/S-QUATTRO-PE

3208333

<https://www.phoenixcontact.com/de/produkte/3208333>

DIN rail, unperforated

DIN rail, unperforated - NS 35/15 WH UNPERF 2000MM-VPE 10 - 1204135

<https://www.phoenixcontact.com/de/produkte/1204135>



DIN rail, unperforated, similar to EN 60715, material: Steel, Galvanized, white passivated, Standard profile, color: silver, Pack of 10 (20 m)

DIN rail, unperforated

DIN rail, unperforated - NS 35/15 AL UNPERF 2000MM - 1201756

<https://www.phoenixcontact.com/de/produkte/1201756>



DIN rail, unperforated, similar to EN 60715, material: Aluminum, uncoated, Standard profile, color: silver

Ground modular terminal block - PT 1,5/S-QUATTRO-PE

3208333

<https://www.phoenixcontact.com/de/produkte/3208333>

DIN rail perforated

DIN rail perforated - NS 35/15 ZN PERF 2000MM - 1206599

<https://www.phoenixcontact.com/de/produkte/1206599>



DIN rail perforated, similar to EN 60715, material: Steel, galvanized, Standard profile, color: silver, Pack of 25 (50 m)

DIN rail, unperforated

DIN rail, unperforated - NS 35/15 ZN UNPERF 2000MM - 1206586

<https://www.phoenixcontact.com/de/produkte/1206586>



DIN rail, unperforated, similar to EN 60715, material: Steel, galvanized, Standard profile, color: silver, Pack of 25 (50 m)

Ground modular terminal block - PT 1,5/S-QUATTRO-PE

3208333

<https://www.phoenixcontact.com/de/produkte/3208333>

DIN rail, unperforated

DIN rail, unperforated - NS 35/15 CU UNPERF 2000MM-VPE 10 - 1201895

<https://www.phoenixcontact.com/de/produkte/1201895>



DIN rail, unperforated, similar to EN 60715, material: Copper, uncoated, Standard profile, color: copper-colored, Pack of 10 (20 m)

End cap

End cap - NS 35/15 CAP - 1206573

<https://www.phoenixcontact.com/de/produkte/1206573>

DIN rail end piece, for DIN rail NS 35/15



Ground modular terminal block - PT 1,5/S-QUATTRO-PE

3208333

<https://www.phoenixcontact.com/de/produkte/3208333>

DIN rail, unperforated

DIN rail, unperforated - NS 35/15-2,3 UNPERF 2000MM-VPE 10 - 1201798

<https://www.phoenixcontact.com/de/produkte/1201798>



DIN rail, unperforated, acc. to EN 60715, material: Steel, galvanized, passivated with a thick layer, Standard profile 2.3 mm, color: silver, Pack of 10 (20 m)

Zack marker strip

Zack marker strip - ZB 3,5:UNBEDRUCKT - 0829414

<https://www.phoenixcontact.com/de/produkte/0829414>



Zack marker strip, Strip, white, unlabeled, can be labeled with: PLOTMARK, CMS-P1-PLOTTER, mounting type: snapped, for terminal block width: 3.5 mm, lettering field size: 3.5 x 10.5 mm, Number of individual labels: 10

Ground modular terminal block - PT 1,5/S-QUATTRO-PE

3208333

<https://www.phoenixcontact.com/de/produkte/3208333>

Zack marker strip

Zack marker strip - ZB 3,5 CUS - 0829415

<https://www.phoenixcontact.com/de/produkte/0829415>

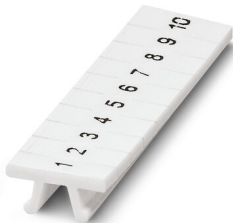


Zack marker strip, can be ordered: Strip, white, labeled according to customer specifications, mounting type: snap into tall marker groove, for terminal block width: 3.5 mm, lettering field size: 3.5 x 10.5 mm, Number of individual labels: 10

Zack marker strip

Zack marker strip - ZB 3,5,LGS:FORTL.ZAHLEN - 0801404

<https://www.phoenixcontact.com/de/produkte/0801404>



Zack marker strip, Strip, white, labeled, printed horizontally: consecutive numbers 1 ... 10, 11 ... 20, etc. up to 91 ... 100, mounting type: snapped, for terminal block width: 3.5 mm, lettering field size: 3.5 x 10.5 mm, Number of individual labels: 10

Ground modular terminal block - PT 1,5/S-QUATTRO-PE

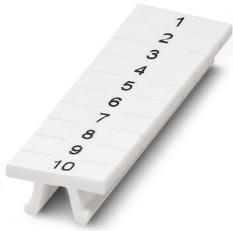
3208333

<https://www.phoenixcontact.com/de/produkte/3208333>

Zack marker strip

Zack marker strip - ZB 3,5,QR:FORT.ZAHLEN - 0801405

<https://www.phoenixcontact.com/de/produkte/0801405>



Zack marker strip, Strip, white, labeled, Printed vertically: consecutive numbers 1 ... 10, 11 ... 20, etc. up to 91 ... 100, mounting type: snapped, for terminal block width: 3.5 mm, lettering field size: 3.5 x 10.5 mm, Number of individual labels: 10

Marker for terminal blocks

Marker for terminal blocks - UCT-TM 3,5 - 0829484

<https://www.phoenixcontact.com/de/produkte/0829484>



Marker for terminal blocks, Sheet, white, unlabeled, can be labeled with: TOPMARK NEO, TOPMARK LASER, BLUEMARK ID COLOR, BLUEMARK ID, BLUEMARK CLED, THERMOMARK PRIME, THERMOMARK CARD 2.0, THERMOMARK CARD, mounting type: snapped, for terminal block width: 3.5 mm, lettering field size: 2.95 x 10.5 mm, Number of individual labels: 102

Ground modular terminal block - PT 1,5/S-QUATTRO-PE

3208333

<https://www.phoenixcontact.com/de/produkte/3208333>

Marker for terminal blocks

Marker for terminal blocks - UCT-TM 3,5 CUS - 0829581

<https://www.phoenixcontact.com/de/produkte/0829581>

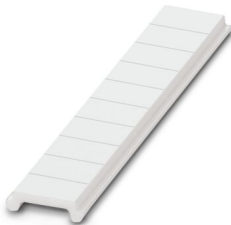


Marker for terminal blocks, can be ordered: by sheet, white, labeled according to customer specifications, mounting type: snap into tall marker groove, for terminal block width: 3.5 mm, lettering field size: 2.95 x 10.5 mm, Number of individual labels: 102

Zack Marker strip, flat

Zack Marker strip, flat - ZBF 3,5:UNBEDRUCKT - 0829392

<https://www.phoenixcontact.com/de/produkte/0829392>



Zack Marker strip, flat, Strip, white, unlabeled, can be labeled with: PLOTMARK, CMS-P1-PLOTTER, mounting type: snapped, for terminal block width: 3.5 mm, lettering field size: 3.5 x 5.2 mm, Number of individual labels: 10

Ground modular terminal block - PT 1,5/S-QUATTRO-PE

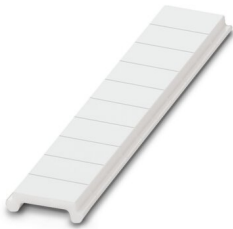
3208333

<https://www.phoenixcontact.com/de/produkte/3208333>

Zack Marker strip, flat

Zack Marker strip, flat - ZBF 3,5 CUS - 0829394

<https://www.phoenixcontact.com/de/produkte/0829394>



Zack Marker strip, flat, can be ordered: Strip, white, labeled according to customer specifications, mounting type: snap into flat marker groove, for terminal block width: 3.5 mm, lettering field size: 3.5 x 5.2 mm, Number of individual labels: 10

Zack Marker strip, flat

Zack Marker strip, flat - ZBF 3,5,LGS:FORTL.ZAHLEN - 0801406

<https://www.phoenixcontact.com/de/produkte/0801406>



Zack Marker strip, flat, Strip, white, labeled, printed horizontally: consecutive numbers 1 ... 10, 11 ... 20, etc. up to 91 ... 100, mounting type: snapped, for terminal block width: 3.5 mm, lettering field size: 5.15 x 3.5 mm, Number of individual labels: 10

Ground modular terminal block - PT 1,5/S-QUATTRO-PE



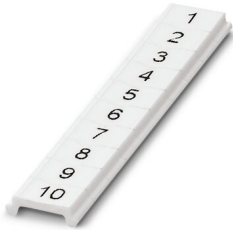
3208333

<https://www.phoenixcontact.com/de/produkte/3208333>

Zack Marker strip, flat

Zack Marker strip, flat - ZBF 3,5,QR:FORTL.ZAHLEN - 0801407

<https://www.phoenixcontact.com/de/produkte/0801407>



Zack Marker strip, flat, Strip, white, labeled, Printed vertically: consecutive numbers 1 ... 10, 11 ... 20, etc. up to 91 ... 100, mounting type: snapped, for terminal block width: 3.5 mm, lettering field size: 5.15 x 3.5 mm, Number of individual labels: 10

Marker for terminal blocks

Marker for terminal blocks - UCT-TMF 3,5 - 0829486

<https://www.phoenixcontact.com/de/produkte/0829486>



Marker for terminal blocks, Sheet, white, unlabeled, can be labeled with: TOPMARK NEO, TOPMARK LASER, BLUEMARK ID COLOR, BLUEMARK ID, BLUEMARK CLED, THERMOMARK PRIME, THERMOMARK CARD 2.0, THERMOMARK CARD, mounting type: snapped, for terminal block width: 3.5 mm, lettering field size: 2.7 x 4.7 mm, Number of individual labels: 108

Ground modular terminal block - PT 1,5/S-QUATTRO-PE

3208333

<https://www.phoenixcontact.com/de/produkte/3208333>

Marker for terminal blocks

Marker for terminal blocks - UCT-TMF 3,5 CUS - 0829644

<https://www.phoenixcontact.com/de/produkte/0829644>



Marker for terminal blocks, can be ordered: by sheet, white, labeled according to customer specifications, mounting type: snap into flat marker groove, for terminal block width: 3.5 mm, lettering field size: 2.7 x 4.7 mm, Number of individual labels: 108

Test plugs

Test plugs - MPS-MT - 0201744

<https://www.phoenixcontact.com/de/produkte/0201744>



Test plugs, with solder connection up to 1 mm² conductor cross section, color: gray

Ground modular terminal block - PT 1,5/S-QUATTRO-PE

3208333

<https://www.phoenixcontact.com/de/produkte/3208333>

Insulating sleeve

Insulating sleeve - MPS-IH WH - 0201663

<https://www.phoenixcontact.com/de/produkte/0201663>

Insulating sleeve, color: white



Insulating sleeve

Insulating sleeve - MPS-IH RD - 0201676

<https://www.phoenixcontact.com/de/produkte/0201676>

Insulating sleeve, color: red



Ground modular terminal block - PT 1,5/S-QUATTRO-PE

3208333

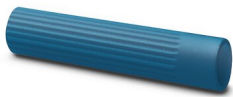
<https://www.phoenixcontact.com/de/produkte/3208333>

Insulating sleeve

Insulating sleeve - MPS-IH BU - 0201689

<https://www.phoenixcontact.com/de/produkte/0201689>

Insulating sleeve, color: blue



Insulating sleeve

Insulating sleeve - MPS-IH YE - 0201692

<https://www.phoenixcontact.com/de/produkte/0201692>

Insulating sleeve, color: yellow



Ground modular terminal block - PT 1,5/S-QUATTRO-PE

3208333

<https://www.phoenixcontact.com/de/produkte/3208333>

Insulating sleeve

Insulating sleeve - MPS-IH GN - 0201702

<https://www.phoenixcontact.com/de/produkte/0201702>

Insulating sleeve, color: green



Insulating sleeve

Insulating sleeve - MPS-IH GY - 0201728

<https://www.phoenixcontact.com/de/produkte/0201728>

Insulating sleeve, color: gray



Ground modular terminal block - PT 1,5/S-QUATTRO-PE

3208333

<https://www.phoenixcontact.com/de/produkte/3208333>

Insulating sleeve

Insulating sleeve - MPS-IH BK - 0201731

<https://www.phoenixcontact.com/de/produkte/0201731>

Insulating sleeve, color: black



Software

Software - PROJECT COMPLETE - 1050453

<https://www.phoenixcontact.com/de/produkte/1050453>



Intuitive planning and marking software for configuring terminal strips and for professional marking of marking materials for terminal blocks, conductors, cables, devices, and systems. The software is available for download

Ground modular terminal block - PT 1,5/S-QUATTRO-PE

3208333

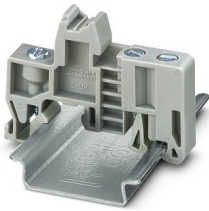
<https://www.phoenixcontact.com/de/produkte/3208333>

End clamp

End clamp - E/UK - 1201442

<https://www.phoenixcontact.com/de/produkte/1201442>

End clamp, material: PA, color: gray, Mounting on a DIN rail NS 32 or NS 35



End clamp

End clamp - E/UK 1 - 1201413

<https://www.phoenixcontact.com/de/produkte/1201413>

End clamps, for supporting the ends of double-level and three-level terminal blocks, width: 10 mm, color: gray



Ground modular terminal block - PT 1,5/S-QUATTRO-PE

3208333

<https://www.phoenixcontact.com/de/produkte/3208333>

Marker for terminal blocks

Marker for terminal blocks - TMT (EX9,5)R - 0828295

<https://www.phoenixcontact.com/de/produkte/0828295>



Marker for terminal blocks, Roll, white, unlabeled, can be labeled with: THERMOMARK ROLL 2.0, THERMOMARK ROLL, THERMOMARK ROLL X1, THERMOMARK ROLLMASTER 300/600, THERMOMARK X1.2, mounting type: snapped, snap into tall marker groove, for terminal block width: 50000 mm, lettering field size: 9.5 x 50000 mm, Number of individual labels: 1

Marker for terminal blocks

Marker for terminal blocks - US-TM 100 - 0829255

<https://www.phoenixcontact.com/de/produkte/0829255>



Marker for terminal blocks, Card, white, unlabeled, can be labeled with: BLUEMARK ID COLOR, BLUEMARK ID, THERMOMARK PRIME, THERMOMARK CARD 2.0, THERMOMARK CARD, mounting type: snapped, lettering field size: 104 x 9.8 mm, Number of individual labels: 13

Ground modular terminal block - PT 1,5/S-QUATTRO-PE

3208333

<https://www.phoenixcontact.com/de/produkte/3208333>

End clamp

End clamp - CLIPFIX 35 - 3022218

<https://www.phoenixcontact.com/de/produkte/3022218>

Quick mounting end clamp for NS 35/7,5 DIN rail or NS 35/15 DIN rail, with marking option, width: 9.5 mm, color: gray



End clamp

End clamp - CLIPFIX 35-5 - 3022276

<https://www.phoenixcontact.com/de/produkte/3022276>

Quick mounting end clamp for NS 35/7,5 DIN rail or NS 35/15 DIN rail, with marking option, with parking option for FBS...5, FBS...6, KSS 5, KSS 6, width: 5.15 mm, color: gray



Ground modular terminal block - PT 1,5/S-QUATTRO-PE

3208333

<https://www.phoenixcontact.com/de/produkte/3208333>

End clamp

End clamp - E/NS 35 N - 0800886

<https://www.phoenixcontact.com/de/produkte/0800886>

End clamp, width: 9.5 mm, color: gray



Test plugs

Test plugs - PS-3,5 - 3031010

<https://www.phoenixcontact.com/de/produkte/3031010>

Test plugs, Modular test plug, color: red



Ground modular terminal block - PT 1,5/S-QUATTRO-PE



3208333

<https://www.phoenixcontact.com/de/produkte/3208333>

Spacer plate

Spacer plate - DP PS-3,5 - 3031011

<https://www.phoenixcontact.com/de/produkte/3031011>



Spacer plate, length: 15.9 mm, width: 3.5 mm, height: 33.5 mm, number of positions: 1, color: red

Test plugs

Test plugs - PS-3,5/E - 3031012

<https://www.phoenixcontact.com/de/produkte/3031012>



Test plugs, Individual test plug, color: red

Phoenix Contact 2022 © - all rights reserved
<https://www.phoenixcontact.com>

PHOENIX CONTACT Deutschland GmbH
Flachsmarktstraße 8
D-32825 Blomberg
+49 52 35/3-1 20 00
info@phoenixcontact.de