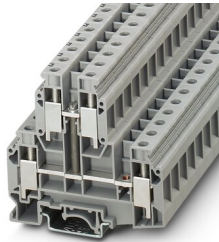


Double-level terminal block - UKKB 10-PV

3003567

<https://www.phoenixcontact.com/de/produkte/3003567>

Please be informed that the data shown in this PDF document is generated from our Online Catalog. Please find the complete data in the user documentation. Our General Terms of Use for Downloads are valid.



Double-level terminal block, with equipotential bonder, nom. voltage: 500 V, nominal current: 57 A, connection method: Screw connection, 1st and 2nd level, Rated cross section: 10 mm², cross section: 0.5 mm² - 16 mm², Rated cross section: 10 mm², mounting type: NS 35/7,5, NS 35/15, NS 32, color: gray

Your advantages

- Design width of just 10.2 mm

Double-level terminal block - UKKB 10-PV



3003567

<https://www.phoenixcontact.com/de/produkte/3003567>

Commercial Data

Item number	3003567
Packing unit	50 pc
Minimum order quantity	1 pc
Sales Key	A1 - Reihenklennen
Product Key	BE1214
Catalog Page	Page 474 (C-1-2019)
GTIN	4017918100759
Weight per Piece (including packing)	46,92 g
Weight per Piece (excluding packing)	46,92 g
Customs tariff number	85369010
Country of origin	TR

Double-level terminal block - UKKB 10-PV



3003567

<https://www.phoenixcontact.com/de/produkte/3003567>

Technical Data

Product properties

Product type	Multi-level terminal block
Number of connections	4
Number of rows	2
Potentials	2

Insulation characteristics

Overvoltage category	III
Degree of pollution	3

Electrical properties

Rated surge voltage	6 kV
Maximum power dissipation for nominal condition	1.82 W

Connection data

Number of connections per level	2
Nominal cross section	10 mm ²

1st and 2nd level

Screw thread	M4
Tightening torque	1.5 ... 1.8 Nm
Stripping length	11 mm
Internal cylindrical gage	B6
Conductor cross section solid	0.5 mm ² ... 16 mm ²
Cross section AWG	20 ... 6
Conductor cross section flexible	0.5 mm ² ... 10 mm ²
Conductor cross section, flexible [AWG]	20 ... 8
Flexible conductor cross section flexible (ferrule, w/o plastic sleeve)	0.5 mm ² ... 10 mm ²
Flexible conductor cross section (ferrule with plastic sleeve)	0.5 mm ² ... 6 mm ²
2 conductors with same cross section, solid	0.5 mm ² ... 6 mm ²
2 conductors with same cross section, flexible	0.5 mm ² ... 4 mm ²
2 conductors with same cross section, flexible, with ferrule without plastic sleeve	0.5 mm ² ... 6 mm ²
2 conductors with the same cross section, flexible, with TWIN ferrule with plastic sleeve	0.5 mm ² ... 6 mm ²
Nominal current	57 A
Maximum load current	70 A (with 16 mm ² conductor cross section)
Nominal voltage	500 V
Nominal cross section	10 mm ²
Nominal current	57 A
Nominal cross section	10 mm ²

Double-level terminal block - UKKB 10-PV



3003567

<https://www.phoenixcontact.com/de/produkte/3003567>

Dimensions

Width	10.2 mm
End cover width	1.5 mm
Height NS 35/15	80.5 mm
Height NS 35/7,5	73 mm
Height	2.874 "
Height NS 32	78 mm
Length	77.5 mm

Material specifications

Color	gray
Flammability rating according to UL 94	V0
Insulating material group	I
Insulating material	PA
Static insulating material application in cold	-60 °C
Temperature index of insulation material (DIN EN 60216-1 (VDE 0304-21))	130 °C
Relative insulation material temperature index (Elec., UL 746 B)	130 °C
Fire protection for rail vehicles (DIN EN 45545-2) R22	HL 1 - HL 3
Fire protection for rail vehicles (DIN EN 45545-2) R23	HL 1 - HL 3
Fire protection for rail vehicles (DIN EN 45545-2) R24	HL 1 - HL 3
Fire protection for rail vehicles (DIN EN 45545-2) R26	HL 1 - HL 3
Calorimetric heat release NFPA 130 (ASTM E 1354)	28 MJ/kg
Surface flammability NFPA 130 (ASTM E 162)	passed
Specific optical density of smoke NFPA 130 (ASTM E 662)	passed
Smoke gas toxicity NFPA 130 (SMP 800C)	passed

Electrical tests

Surge voltage test

Result	Test passed
--------	-------------

Temperature-rise test

Requirement temperature-rise test	Increase in temperature ≤ 45 K
Result	Test passed
Short-time withstand current 10 mm ²	1.2 kA
Result	Test passed

Power-frequency withstand voltage

Test voltage setpoint	1.89 kV
Result	Test passed

Mechanical properties

Mechanical data

Open side panel	Yes
-----------------	-----

Double-level terminal block - UKKB 10-PV



3003567

<https://www.phoenixcontact.com/de/produkte/3003567>

Mechanical tests

Mechanical strength

Result	Test passed
--------	-------------

Attachment on the carrier

DIN rail/fixing support	NS 32/NS 35
Test force setpoint	5 N
Result	Test passed

Test for conductor damage and slackening

Rotation speed	10 (+/- 2) rpm
Revolutions	135
Conductor cross section/weight	0.5 mm ² / 0.3 kg
	10 mm ² / 2 kg
	16 mm ² / 2.9 kg
Result	Test passed

Environmental and real-life conditions

Needle-flame test

Time of exposure	30 s
Result	Test passed

Ambient conditions

Ambient temperature (operation)	-60 °C ... 105 °C (max. short-term operating temperature RTI Elec.)
Ambient temperature (storage/transport)	-25 °C ... 60 °C (for a short time, not exceeding 24 h, -60 °C to +70 °C)
Ambient temperature (assembly)	-5 °C ... 70 °C
Ambient temperature (actuation)	-5 °C ... 70 °C
Permissible humidity (storage/transport)	30 % ... 70 %

Standards and regulations

Connection in acc. with standard	IEC 60947-7-1
	IEC 60947-7-1

Mounting

Mounting type	NS 35/7,5
	NS 35/15
	NS 32

Double-level terminal block - UKKB 10-PV

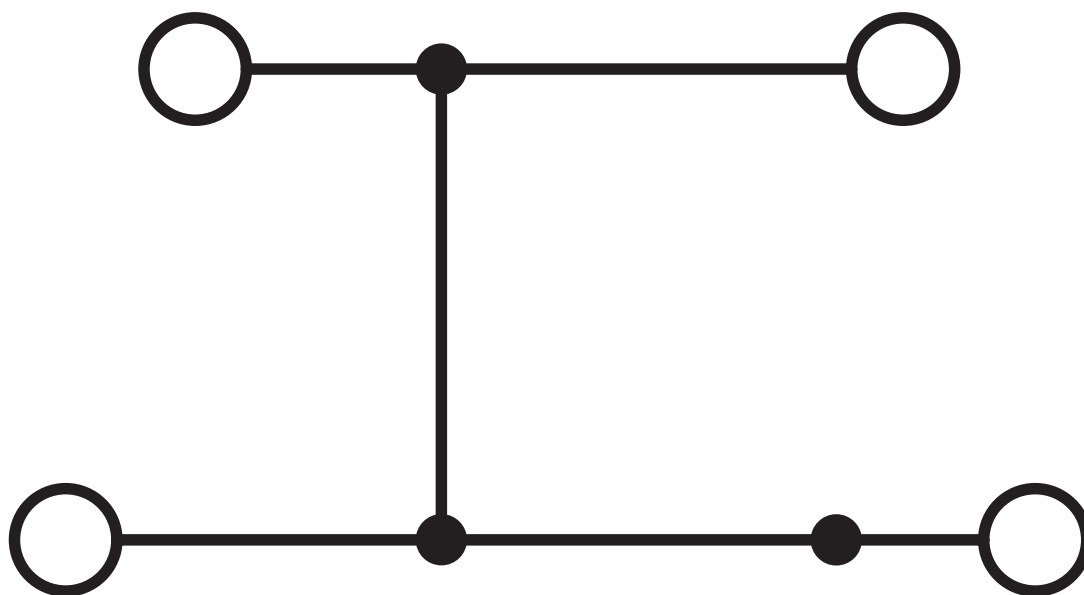
3003567

<https://www.phoenixcontact.com/de/produkte/3003567>



Drawings

Circuit diagram



Double-level terminal block - UKKB 10-PV



3003567

<https://www.phoenixcontact.com/de/produkte/3003567>

Approvals



EAC

Approval ID: RU C-DE.BL08.B.00534

Double-level terminal block - UKKB 10-PV



3003567

<https://www.phoenixcontact.com/de/produkte/3003567>

Classifications

ECLASS

ECLASS-10.0.1	27141120
ECLASS-9.0	27141120
ECLASS-11.0	27141120

ETIM

ETIM 8.0	EC000897
----------	----------

UNSPSC

UNSPSC 21.0	39121400
-------------	----------

Double-level terminal block - UKKB 10-PV



3003567

<https://www.phoenixcontact.com/de/produkte/3003567>

Environmental Product Compliance


REACH SVHC	Lead 7439-92-1
China RoHS	Environmentally Friendly Use Period = 50 years
	For information on hazardous substances, refer to the manufacturer's declaration available under "Downloads"

Double-level terminal block - UKKB 10-PV

3003567

<https://www.phoenixcontact.com/de/produkte/3003567>

Accessories

 Note: Applying some accessories below might limit this product.

Bridge bar isolator

Bridge bar isolator - IS-K 10 - 1303337

<https://www.phoenixcontact.com/de/produkte/1303337>



Bridge bar isolator, color: gray

Bridge

Bridge - ISSBI 10-10 - 0301521

<https://www.phoenixcontact.com/de/produkte/0301521>



Bridge, pitch: 10 mm, color: silver

 Max. current carrying capacity: 50 A

Double-level terminal block - UKKB 10-PV

3003567

<https://www.phoenixcontact.com/de/produkte/3003567>


Chain bridge

Chain bridge - KB- 10 - 0203205

<https://www.phoenixcontact.com/de/produkte/0203205>



Chain bridge, pitch: 10 mm, color: silver

 Max. current carrying capacity: 70 A

Fixed bridge

Fixed bridge - FBI 2-10 - 0203483

<https://www.phoenixcontact.com/de/produkte/0203483>



Fixed bridge, pitch: 10 mm, color: silver

Double-level terminal block - UKKB 10-PV

3003567

<https://www.phoenixcontact.com/de/produkte/3003567>




Fixed bridge

Fixed bridge - FBI 10-10 - 0203276

<https://www.phoenixcontact.com/de/produkte/0203276>



Fixed bridge, pitch: 10 mm, color: silver

 Max. current carrying capacity: 70 A

Insertion bridge

Insertion bridge - EB 2-10 - 0203153

<https://www.phoenixcontact.com/de/produkte/0203153>



Insertion bridge, pitch: 10 mm, color: gray

Double-level terminal block - UKKB 10-PV

3003567

<https://www.phoenixcontact.com/de/produkte/3003567>

Insertion bridge

Insertion bridge - EB 3-10 - 0203328

<https://www.phoenixcontact.com/de/produkte/0203328>

Insertion bridge, pitch: 10 mm, color: gray

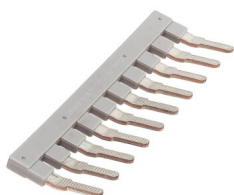


Insertion bridge

Insertion bridge - EB 10-10 - 0203137

<https://www.phoenixcontact.com/de/produkte/0203137>

Insertion bridge, pitch: 10 mm, color: gray



Double-level terminal block - UKKB 10-PV

3003567

<https://www.phoenixcontact.com/de/produkte/3003567>

Switching jumper

Switching jumper - SB 2-10/15 - 0203234

<https://www.phoenixcontact.com/de/produkte/0203234>

Switching jumper, pitch: 15 mm, color: silver



End cover

End cover - D-UKKB 10 - 3001394

<https://www.phoenixcontact.com/de/produkte/3001394>

End cover, length: 77.5 mm, width: 1.5 mm, height: 73 mm, color: gray



Double-level terminal block - UKKB 10-PV

3003567

<https://www.phoenixcontact.com/de/produkte/3003567>

DIN rail perforated

DIN rail perforated - NS 32 PERF 2000MM-VPE 10 - 1201002

<https://www.phoenixcontact.com/de/produkte/1201002>



DIN rail perforated, acc. to EN 60715, material: Steel, galvanized, passivated with a thick layer, G profile, color: silver, Pack of 10 (20 m)

Short-circuit connector

Short-circuit connector - KSS 10 - 0310541

<https://www.phoenixcontact.com/de/produkte/0310541>



Short-circuit connector, pitch: 10 mm, color: black

Double-level terminal block - UKKB 10-PV

3003567

<https://www.phoenixcontact.com/de/produkte/3003567>

DIN rail, unperforated

DIN rail, unperforated - NS 32 UNPERF 2000MM-VPE 10 - 1201015

<https://www.phoenixcontact.com/de/produkte/1201015>



DIN rail, unperforated, acc. to EN 60715, material: Steel, galvanized, passivated with a thick layer, G profile, color: silver, Pack of 10 (20 m)

Marker card

Marker card - SBS10:UNBEDRUCKT - 1007248

<https://www.phoenixcontact.com/de/produkte/1007248>



Marker card, Card, white, unlabeled, can be labeled with: Marker pen, perforated, mounting type: snapped, snap into flat marker groove, for terminal block width: 10 mm, lettering field size: 6 x 10.1 mm, Number of individual labels: 250

Double-level terminal block - UKKB 10-PV

3003567

<https://www.phoenixcontact.com/de/produkte/3003567>

DIN rail perforated

DIN rail perforated - NS 35/ 7,5 PERF 2000MM - 0801733

<https://www.phoenixcontact.com/de/produkte/0801733>



DIN rail perforated, acc. to EN 60715, material: Steel, galvanized, passivated with a thick layer, Standard profile, color: silver, Pack of 25 (50 m)

DIN rail, unperforated

DIN rail, unperforated - NS 35/ 7,5 UNPERF 2000MM - 0801681

<https://www.phoenixcontact.com/de/produkte/0801681>



DIN rail, unperforated, acc. to EN 60715, material: Steel, galvanized, passivated with a thick layer, Standard profile, color: silver, Pack of 25 (50 m)

Double-level terminal block - UKKB 10-PV

3003567

<https://www.phoenixcontact.com/de/produkte/3003567>

DIN rail perforated

DIN rail perforated - NS 35/ 7,5 WH PERF 2000MM - 1204119

<https://www.phoenixcontact.com/de/produkte/1204119>



DIN rail perforated, acc. to EN 60715, material: Steel, Galvanized, white passivated, Standard profile, color: silver, Pack of 25 (50 m)

DIN rail, unperforated

DIN rail, unperforated - NS 35/ 7,5 WH UNPERF 2000MM-VPE 10 - 1204122

<https://www.phoenixcontact.com/de/produkte/1204122>



DIN rail, unperforated, acc. to EN 60715, material: Steel, Galvanized, white passivated, Standard profile, color: silver, Pack of 10 (20 m)

Double-level terminal block - UKKB 10-PV

3003567

<https://www.phoenixcontact.com/de/produkte/3003567>

DIN rail, unperforated

DIN rail, unperforated - NS 35/ 7,5 AL UNPERF 2000MM - 0801704

<https://www.phoenixcontact.com/de/produkte/0801704>



DIN rail, unperforated, acc. to EN 60715, material: Aluminum, uncoated, Standard profile, color: silver, Pack of 25 (50 m)

DIN rail perforated

DIN rail perforated - NS 35/ 7,5 ZN PERF 2000MM - 1206421

<https://www.phoenixcontact.com/de/produkte/1206421>



DIN rail perforated, acc. to EN 60715, material: Steel, galvanized, Standard profile, color: silver, Pack of 25 (50 m)

Double-level terminal block - UKKB 10-PV

3003567

<https://www.phoenixcontact.com/de/produkte/3003567>

DIN rail, unperforated

DIN rail, unperforated - NS 35/ 7,5 ZN UNPERF 2000MM - 1206434

<https://www.phoenixcontact.com/de/produkte/1206434>



DIN rail, unperforated, acc. to EN 60715, material: Steel, galvanized, Standard profile, color: silver, Pack of 25 (50 m)

DIN rail, unperforated

DIN rail, unperforated - NS 35/ 7,5 CU UNPERF 2000MM-VPE 10 - 0801762

<https://www.phoenixcontact.com/de/produkte/0801762>



DIN rail, unperforated, acc. to EN 60715, material: Copper, uncoated, Standard profile, color: copper-colored, Pack of 10 (20 m)

Double-level terminal block - UKKB 10-PV

3003567

<https://www.phoenixcontact.com/de/produkte/3003567>



End cap

End cap - NS 35/ 7,5 CAP - 1206560

<https://www.phoenixcontact.com/de/produkte/1206560>

DIN rail end piece, for DIN rail NS 35/7.5



DIN rail perforated

DIN rail perforated - NS 35/15 PERF 2000MM - 1201730

<https://www.phoenixcontact.com/de/produkte/1201730>



DIN rail perforated, similar to EN 60715, material: Steel, galvanized, passivated with a thick layer, Standard profile, color: silver, Pack of 25 (50 m)

Double-level terminal block - UKKB 10-PV

3003567

<https://www.phoenixcontact.com/de/produkte/3003567>

DIN rail, unperforated

DIN rail, unperforated - NS 35/15 UNPERF 2000MM - 1201714

<https://www.phoenixcontact.com/de/produkte/1201714>



DIN rail, unperforated, similar to EN 60715, material: Steel, galvanized, passivated with a thick layer, Standard profile, color: silver, Pack of 25 (50 m)

DIN rail perforated

DIN rail perforated - NS 35/15 WH PERF 2000MM - 0806602

<https://www.phoenixcontact.com/de/produkte/0806602>



DIN rail perforated, similar to EN 60715, material: Steel, Galvanized, white passivated, Standard profile, color: white, Pack of 25 (50 m)

Double-level terminal block - UKKB 10-PV

3003567

<https://www.phoenixcontact.com/de/produkte/3003567>

DIN rail, unperforated

DIN rail, unperforated - NS 35/15 WH UNPERF 2000MM-VPE 10 - 1204135

<https://www.phoenixcontact.com/de/produkte/1204135>



DIN rail, unperforated, similar to EN 60715, material: Steel, Galvanized, white passivated, Standard profile, color: silver, Pack of 10 (20 m)

DIN rail, unperforated

DIN rail, unperforated - NS 35/15 AL UNPERF 2000MM - 1201756

<https://www.phoenixcontact.com/de/produkte/1201756>



DIN rail, unperforated, similar to EN 60715, material: Aluminum, uncoated, Standard profile, color: silver

Double-level terminal block - UKKB 10-PV

3003567

<https://www.phoenixcontact.com/de/produkte/3003567>

DIN rail perforated

DIN rail perforated - NS 35/15 ZN PERF 2000MM - 1206599

<https://www.phoenixcontact.com/de/produkte/1206599>



DIN rail perforated, similar to EN 60715, material: Steel, galvanized, Standard profile, color: silver, Pack of 25 (50 m)

DIN rail, unperforated

DIN rail, unperforated - NS 35/15 ZN UNPERF 2000MM - 1206586

<https://www.phoenixcontact.com/de/produkte/1206586>



DIN rail, unperforated, similar to EN 60715, material: Steel, galvanized, Standard profile, color: silver, Pack of 25 (50 m)

Double-level terminal block - UKKB 10-PV

3003567

<https://www.phoenixcontact.com/de/produkte/3003567>

DIN rail, unperforated

DIN rail, unperforated - NS 35/15 CU UNPERF 2000MM-VPE 10 - 1201895

<https://www.phoenixcontact.com/de/produkte/1201895>



DIN rail, unperforated, similar to EN 60715, material: Copper, uncoated, Standard profile, color: copper-colored, Pack of 10 (20 m)

End cap

End cap - NS 35/15 CAP - 1206573

<https://www.phoenixcontact.com/de/produkte/1206573>

DIN rail end piece, for DIN rail NS 35/15



Double-level terminal block - UKKB 10-PV

3003567

<https://www.phoenixcontact.com/de/produkte/3003567>

DIN rail, unperforated

DIN rail, unperforated - NS 35/15-2,3 UNPERF 2000MM-VPE 10 - 1201798

<https://www.phoenixcontact.com/de/produkte/1201798>

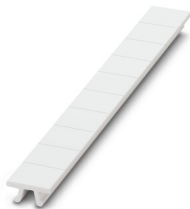


DIN rail, unperforated, acc. to EN 60715, material: Steel, galvanized, passivated with a thick layer, Standard profile 2.3 mm, color: silver, Pack of 10 (20 m)

Zack marker strip

Zack marker strip - ZB 10:UNBEDRUCKT - 1053001

<https://www.phoenixcontact.com/de/produkte/1053001>



Zack marker strip, Strip, white, unlabeled, can be labeled with: PLOTMARK, CMS-P1-PLOTTER, mounting type: snapped, for terminal block width: 10.2 mm, lettering field size: 10.5 mm x 10.15 mm, Number of individual labels: 10

Double-level terminal block - UKKB 10-PV

3003567

<https://www.phoenixcontact.com/de/produkte/3003567>

Zack marker strip

Zack marker strip - ZB 10 CUS - 0824941

<https://www.phoenixcontact.com/de/produkte/0824941>



Zack marker strip, can be ordered: Strip, white, labeled according to customer specifications, mounting type: snap into tall marker groove, for terminal block width: 10.2 mm, lettering field size: 10.15 x 10.5 mm, Number of individual labels: 10

Zack marker strip

Zack marker strip - ZB10,LGS:FORTL.ZAHLEN - 1053014

<https://www.phoenixcontact.com/de/produkte/1053014>



Zack marker strip, Strip, white, labeled, can be labeled with: CMS-P1-PLOTTER, printed horizontally: consecutive numbers 1 ... 10, 11 ... 20, etc. up to 91 ... 100, mounting type: snapped, for terminal block width: 10.2 mm, lettering field size: 10.15 x 10.5 mm, Number of individual labels: 10

Double-level terminal block - UKKB 10-PV

3003567

<https://www.phoenixcontact.com/de/produkte/3003567>

Zack marker strip

Zack marker strip - ZB10,QR:FORTL.ZAHLEN - 1053027

<https://www.phoenixcontact.com/de/produkte/1053027>



Zack marker strip, Strip, white, labeled, can be labeled with: CMS-P1-PLOTTER, Printed vertically: consecutive numbers 1 ... 10, 11 ... 20, etc. up to 91 ... 100, mounting type: snapped, for terminal block width: 10.2 mm, lettering field size: 10.15 x 10.5 mm, Number of individual labels: 10

Marker for terminal blocks

Marker for terminal blocks - ZB10,LGS:L1-N,PE - 1053412

<https://www.phoenixcontact.com/de/produkte/1053412>



Marker for terminal blocks, Strip, white, labeled, can be labeled with: CMS-P1-PLOTTER, horizontal: L1, L2, L3, N, PE, L1, L2, L3, N, PE, mounting type: snapped, for terminal block width: 10.2 mm, lettering field size: 10.15 x 10.5 mm, Number of individual labels: 10

Double-level terminal block - UKKB 10-PV

3003567

<https://www.phoenixcontact.com/de/produkte/3003567>

Marker for terminal blocks

Marker for terminal blocks - ZB10,LGS:U-N - 1053438

<https://www.phoenixcontact.com/de/produkte/1053438>



Marker for terminal blocks, Strip, white, labeled, can be labeled with: CMS-P1-PLOTTER, horizontal: U, V, W, N, GND, U, V, W, N, GND, mounting type: snapped, for terminal block width: 10.2 mm, lettering field size: 10.15 x 10.5 mm, Number of individual labels: 10

Marker for terminal blocks

Marker for terminal blocks - UC-TM 10 - 0818069

<https://www.phoenixcontact.com/de/produkte/0818069>



Marker for terminal blocks, Sheet, white, unlabeled, can be labeled with: BLUEMARK ID COLOR, BLUEMARK ID, BLUEMARK CLED, PLOTMARK, CMS-P1-PLOTTER, mounting type: snapped, for terminal block width: 10.2 mm, lettering field size: 9.6 x 10.5 mm, Number of individual labels: 48

Double-level terminal block - UKKB 10-PV

3003567

<https://www.phoenixcontact.com/de/produkte/3003567>

Marker for terminal blocks

Marker for terminal blocks - UC-TM 10 CUS - 0824605

<https://www.phoenixcontact.com/de/produkte/0824605>



Marker for terminal blocks, can be ordered: by sheet, white, labeled according to customer specifications, mounting type: snap into tall marker groove, for terminal block width: 10.2 mm, lettering field size: 9.6 x 10.5 mm, Number of individual labels: 48

Marker for terminal blocks

Marker for terminal blocks - UCT-TM 10 - 0829142

<https://www.phoenixcontact.com/de/produkte/0829142>



Marker for terminal blocks, Sheet, white, unlabeled, can be labeled with: TOPMARK NEO, TOPMARK LASER, BLUEMARK ID COLOR, BLUEMARK ID, BLUEMARK CLED, THERMOMARK PRIME, THERMOMARK CARD 2.0, THERMOMARK CARD, mounting type: snapped, for terminal block width: 10.2 mm, lettering field size: 8.9 x 9.6 mm, Number of individual labels: 36

Double-level terminal block - UKKB 10-PV

3003567

<https://www.phoenixcontact.com/de/produkte/3003567>

Marker for terminal blocks

Marker for terminal blocks - UCT-TM 10 CUS - 0829623

<https://www.phoenixcontact.com/de/produkte/0829623>



Marker for terminal blocks, can be ordered: by sheet, white, labeled according to customer specifications, mounting type: snap into tall marker groove, for terminal block width: 10.2 mm, lettering field size: 8.9 x 9.6 mm, Number of individual labels: 36

End clamp

End clamp - CLIPFIX 35 - 3022218

<https://www.phoenixcontact.com/de/produkte/3022218>



Quick mounting end clamp for NS 35/7,5 DIN rail or NS 35/15 DIN rail, with marking option, width: 9.5 mm, color: gray

Double-level terminal block - UKKB 10-PV

3003567

<https://www.phoenixcontact.com/de/produkte/3003567>

End clamp

End clamp - CLIPFIX 35-5 - 3022276

<https://www.phoenixcontact.com/de/produkte/3022276>

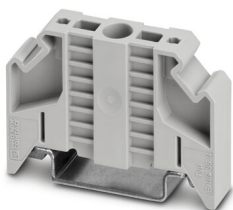


Quick mounting end clamp for NS 35/7,5 DIN rail or NS 35/15 DIN rail, with marking option, with parking option for FBS...5, FBS...6, KSS 5, KSS 6, width: 5.15 mm, color: gray

End clamp

End clamp - E/NS 35 N - 0800886

<https://www.phoenixcontact.com/de/produkte/0800886>



End clamp, width: 9.5 mm, color: gray

Double-level terminal block - UKKB 10-PV

3003567

<https://www.phoenixcontact.com/de/produkte/3003567>

Female test connector

Female test connector - PSBJ 4/15/6 FARBLOS - 0303419

<https://www.phoenixcontact.com/de/produkte/0303419>



Female test connector, color: transparent

Female test connector

Female test connector - PSBJ 4/15/6 WH - 0303312

<https://www.phoenixcontact.com/de/produkte/0303312>



Female test connector, color: white

Double-level terminal block - UKKB 10-PV

3003567

<https://www.phoenixcontact.com/de/produkte/3003567>

Female test connector

Female test connector - PSBJ 4/15/6 RD - 0303325

<https://www.phoenixcontact.com/de/produkte/0303325>



Female test connector, color: red

Female test connector

Female test connector - PSBJ 4/15/6 BU - 0303354

<https://www.phoenixcontact.com/de/produkte/0303354>



Female test connector, color: blue

Double-level terminal block - UKKB 10-PV

3003567

<https://www.phoenixcontact.com/de/produkte/3003567>

Female test connector

Female test connector - PSBJ 4/15/6 YE - 0303367

<https://www.phoenixcontact.com/de/produkte/0303367>



Female test connector, color: yellow

Female test connector

Female test connector - PSBJ 4/15/6 GN - 0303370

<https://www.phoenixcontact.com/de/produkte/0303370>



Female test connector, color: green

Double-level terminal block - UKKB 10-PV

3003567

<https://www.phoenixcontact.com/de/produkte/3003567>

Female test connector

Female test connector - PSBJ 4/15/6 VT - 0303383

<https://www.phoenixcontact.com/de/produkte/0303383>



Female test connector, color: violet

Female test connector

Female test connector - PSBJ 4/15/6 GY - 0303396

<https://www.phoenixcontact.com/de/produkte/0303396>



Female test connector, color: gray

Double-level terminal block - UKKB 10-PV

3003567

<https://www.phoenixcontact.com/de/produkte/3003567>

Female test connector

Female test connector - PSBJ 4/15/6 BK - 0303406

<https://www.phoenixcontact.com/de/produkte/0303406>



Female test connector, color: black

Female test connector

Female test connector - PSB 4/7/6 - 0303299

<https://www.phoenixcontact.com/de/produkte/0303299>



Female test connector, color: silver

Double-level terminal block - UKKB 10-PV

3003567

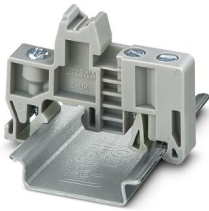
<https://www.phoenixcontact.com/de/produkte/3003567>

End clamp

End clamp - E/UK - 1201442

<https://www.phoenixcontact.com/de/produkte/1201442>

End clamp, material: PA, color: gray, Mounting on a DIN rail NS 32 or NS 35



End clamp

End clamp - E/UK 1 - 1201413

<https://www.phoenixcontact.com/de/produkte/1201413>

End clamps, for supporting the ends of double-level and three-level terminal blocks, width: 10 mm, color: gray



Phoenix Contact 2022 © - all rights reserved
<https://www.phoenixcontact.com>

PHOENIX CONTACT Deutschland GmbH
Flachsmarktstraße 8
D-32825 Blomberg
+49 52 35/3-1 20 00
info@phoenixcontact.de