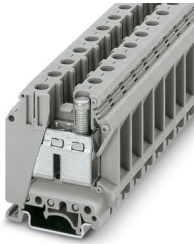


Feed-through terminal block - UK 35

3008012

<https://www.phoenixcontact.com/de/produkte/3008012>

Please be informed that the data shown in this PDF document is generated from our Online Catalog. Please find the complete data in the user documentation. Our General Terms of Use for Downloads are valid.



Feed-through terminal block, nom. voltage: 1000 V, nominal current: 125 A, connection method: Screw connection, cross section: 0.75 mm² - 50 mm², mounting type: NS 35/7,5, NS 35/15, NS 32, color: gray

Your advantages

- The large wiring space enables the connection of solid and stranded conductors without ferrules, even above the nominal cross section
- As well as saving space, the compact design enables user-friendly wiring in a small amount of space
- Optimum screwdriver guidance through closed screw shafts

Feed-through terminal block - UK 35



3008012

<https://www.phoenixcontact.com/de/produkte/3008012>

Commercial Data

Item number	3008012
Packing unit	50 pc
Minimum order quantity	1 pc
Sales Key	A1 - Reihenklennen
Product Key	BE1211
Catalog Page	Page 213 (CL-2005)
GTIN	4017918091552
Weight per Piece (including packing)	57,6 g
Weight per Piece (excluding packing)	55,656 g
Customs tariff number	85369010
Country of origin	DE

Feed-through terminal block - UK 35



3008012

<https://www.phoenixcontact.com/de/produkte/3008012>

Technical Data

Product properties

Product type	Feed-through terminal block
Number of connections	2
Number of rows	1
Potentials	1

Insulation characteristics

Overvoltage category	III
Degree of pollution	3

Electrical properties

Rated surge voltage	8 kV
Maximum power dissipation for nominal condition	4.06 W

Connection data

Number of connections per level	2
Nominal cross section	35 mm ²
Rated cross section AWG	2

Level 1 above 1 below 1

Screw thread	M6
Tightening torque	3.2 ... 3.7 Nm
Stripping length	16 mm
Internal cylindrical gage	B9
Conductor cross section solid	0.75 mm ² ... 50 mm ²
Cross section AWG	18 ... 1/0
Conductor cross section flexible	0.75 mm ² ... 35 mm ²
Conductor cross section, flexible [AWG]	18 ... 2
Flexible conductor cross section flexible (ferrule, w/o plastic sleeve)	0.75 mm ² ... 35 mm ²
Flexible conductor cross section (ferrule with plastic sleeve)	0.75 mm ² ... 35 mm ²
2 conductors with same cross section, solid	0.75 mm ² ... 16 mm ²
2 conductors with same cross section, flexible	0.75 mm ² ... 10 mm ²
2 conductors with same cross section, flexible, with ferrule without plastic sleeve	0.75 mm ² ... 10 mm ²
2 conductors with the same cross section, flexible, with TWIN ferrule with plastic sleeve	0.75 mm ² ... 6 mm ²
Nominal current	125 A
Maximum load current	150 A (with 50 mm ² conductor cross section)
Nominal voltage	1000 V

Ex data

Rated data (ATEX/IECEx)

Feed-through terminal block - UK 35



3008012

<https://www.phoenixcontact.com/de/produkte/3008012>

ATEX certificate	KEMA 98 ATEX 1786 U
IEC Ex certificate	IECEX KEM 06.0029 U
Identification	Ex eb IIC Gb
Operating temperature range	-60 °C ... 110 °C
Ex-certified accessories	3008096 TP-UK 35
	1205079 SZS 1,0X6,5 VDE
	1201442 E/UK
Bridge data	118.5 A / 35 mm ²
	105.5 A / 35 mm ²
	116 A / 35 mm ²
Ex temperature increase	40 K (130.5 A / 35 mm ²)
Rated voltage	630 V
at bridging with insertion bridge	690 V
for bridging with bridge	690 V
Rated insulation voltage	630 V

Ex level General

Rated current	118.5 A
Maximum load current	147 A
Contact resistance	0.08 mΩ

Ex connection data General

Torque range	3.2 Nm ... 3.7 Nm
Nominal cross section	35 mm ²
Rated cross section AWG	2
Connection capacity rigid	0.75 mm ² ... 50 mm ²
Connection capacity AWG	18 ... 1/0
Connection capacity flexible	0.75 mm ² ... 35 mm ²
Connection capacity AWG	18 ... 2
2 conductors with same cross section, solid	0.75 mm ² ... 16 mm ²
2 conductors with the same cross-section AWG rigid	18 ... 6
2 conductors with same cross section, stranded	0.75 mm ² ... 10 mm ²
2 conductors with the same cross-section AWG flexible	18 ... 8

Dimensions

Width	15.1 mm
Height NS 35/15	69.5 mm
Height NS 35/7,5	62 mm
Height	2.441 "
Height NS 32	67 mm
Length	50 mm

Material specifications

Color	gray
Flammability rating according to UL 94	V0

Feed-through terminal block - UK 35



3008012

<https://www.phoenixcontact.com/de/produkte/3008012>

Insulating material group	I
Insulating material	PA
Static insulating material application in cold	-60 °C
Temperature index of insulation material (DIN EN 60216-1 (VDE 0304-21))	125 °C
Relative insulation material temperature index (Elec., UL 746 B)	130 °C
Fire protection for rail vehicles (DIN EN 45545-2) R22	HL 1 - HL 3
Fire protection for rail vehicles (DIN EN 45545-2) R23	HL 1 - HL 3
Fire protection for rail vehicles (DIN EN 45545-2) R24	HL 1 - HL 3
Fire protection for rail vehicles (DIN EN 45545-2) R26	HL 1 - HL 3
Calorimetric heat release NFPA 130 (ASTM E 1354)	27,5 MJ/kg
Surface flammability NFPA 130 (ASTM E 162)	passed
Specific optical density of smoke NFPA 130 (ASTM E 662)	passed
Smoke gas toxicity NFPA 130 (SMP 800C)	passed

Electrical tests

Surge voltage test

Test voltage setpoint	9.8 kV
Result	Test passed

Temperature-rise test

Requirement temperature-rise test	Increase in temperature ≤ 45 K
Result	Test passed
Short-time withstand current 35 mm ²	4.2 kA
Short-time withstand current 50 mm ²	6 kA
Result	Test passed

Power-frequency withstand voltage

Test voltage setpoint	2.2 kV
Result	Test passed

Mechanical properties

Mechanical data

Open side panel	No
-----------------	----

Mechanical tests

Mechanical strength

Result	Test passed
--------	-------------

Attachment on the carrier

DIN rail/fixing support	NS 32/NS 35
Test force setpoint	10 N
Result	Test passed

Test for conductor damage and slackening

Feed-through terminal block - UK 35



3008012

<https://www.phoenixcontact.com/de/produkte/3008012>

Rotation speed	10 rpm
Revolutions	135
Conductor cross section/weight	0.75 mm ² / 0.4 kg
	35 mm ² / 6.8 kg
	50 mm ² / 9.5 kg
Result	Test passed

Environmental and real-life conditions

Needle-flame test

Time of exposure	30 s
Result	Test passed

Ambient conditions

Ambient temperature (operation)	-60 °C ... 105 °C (max. short-term operating temperature RTI Elec.)
Ambient temperature (storage/transport)	-25 °C ... 60 °C (for a short time, not exceeding 24 h, -60 °C to +70 °C)
Ambient temperature (assembly)	-5 °C ... 70 °C
Ambient temperature (actuation)	-5 °C ... 70 °C
Permissible humidity (storage/transport)	30 % ... 70 %

Standards and regulations

Connection in acc. with standard	IEC 60947-7-1
----------------------------------	---------------

Mounting

Mounting type	NS 35/7,5
	NS 35/15
	NS 32

Feed-through terminal block - UK 35

3008012

<https://www.phoenixcontact.com/de/produkte/3008012>



Drawings

Circuit diagram



Feed-through terminal block - UK 35



3008012

<https://www.phoenixcontact.com/de/produkte/3008012>

Approvals

DNV Approval ID: TAE00001CT				
	Nominal Voltage U_N	Nominal Current I_N	Cross Section AWG	Cross Section mm^2
			-	-

CSA Approval ID: 13631				
	Nominal Voltage U_N	Nominal Current I_N	Cross Section AWG	Cross Section mm^2
Use group B				
	600 V	150 A	18 - 1/0	-
Use group C				
	600 V	150 A	18 - 1/0	-
With ATP	1000 V	150 A	18 - 1/0	-

IECEE CB Scheme Approval ID: NL-26111				
	Nominal Voltage U_N	Nominal Current I_N	Cross Section AWG	Cross Section mm^2
	1000 V		-	- 35

cULus Recognized Approval ID: E60425				
	Nominal Voltage U_N	Nominal Current I_N	Cross Section AWG	Cross Section mm^2
Use group B				
	600 V	150 A	18 - 1/0	-
Use group C				
	600 V	150 A	18 - 1/0	-
Use group F				
	1000 V	150 A	18 - 1/0	-

KEMA-KEUR Approval ID: 71-119836				
	Nominal Voltage U_N	Nominal Current I_N	Cross Section AWG	Cross Section mm^2
	1000 V		-	0.75 - 35

KR Approval ID: HMB17372-EL001				
--	--	--	--	--

Feed-through terminal block - UK 35



3008012

<https://www.phoenixcontact.com/de/produkte/3008012>

ClassNK NK Approval ID: 09 ME 141	Nominal Voltage U_N	Nominal Current I_N	Cross Section AWG	Cross Section mm^2
			-	-

RS Approval ID: 17.00013.272
--

ATEX Approval ID: KEMA98ATEX1786U

cUL Recognized Approval ID: E192998	Nominal Voltage U_N	Nominal Current I_N	Cross Section AWG	Cross Section mm^2
	600 V	150 A	18 - 1/0	-

EAC Ex Approval ID: RU C-DE.HA91.B.00066
--

GL Approval ID: 98876-96 HH	Nominal Voltage U_N	Nominal Current I_N	Cross Section AWG	Cross Section mm^2
	EEEx e II part certificate 690 V	118.5 A	-	- 35

IECEX Approval ID: IECEX KEM 06.0029U

UL Recognized Approval ID: E192998	Nominal Voltage U_N	Nominal Current I_N	Cross Section AWG	Cross Section mm^2
	600 V	150 A	18 - 1/0	-

CCC Approval ID: 2020322313000623

NEPSI Approval ID: GYJ20.1195U
--

Feed-through terminal block - UK 35



3008012

<https://www.phoenixcontact.com/de/produkte/3008012>



DNV GL-EX
Approval ID: TAE00003K6

	Nominal Voltage U_N	Nominal Current I_N	Cross Section AWG	Cross Section mm^2
EEx e II part certificate	440 V	32 A	-	- 2.5

cULus Recognized

Feed-through terminal block - UK 35



3008012

<https://www.phoenixcontact.com/de/produkte/3008012>

Classifications

ECLASS

ECLASS-9.0	27141120
ECLASS-10.0.1	27141120
ECLASS-11.0	27141120

ETIM

ETIM 8.0	EC000897
----------	----------

UNSPSC

UNSPSC 21.0	39121400
-------------	----------

Feed-through terminal block - UK 35



3008012

<https://www.phoenixcontact.com/de/produkte/3008012>

Environmental Product Compliance

China RoHS	Environmentally friendly use period: unlimited = EFUP-e
	No hazardous substances above threshold values

Feed-through terminal block - UK 35

3008012

<https://www.phoenixcontact.com/de/produkte/3008012>

Accessories

i Note: Applying some accessories below might limit this product.

Fixed bridge

Fixed bridge - FBI 2-15 - 0201333

<https://www.phoenixcontact.com/de/produkte/0201333>



Fixed bridge, pitch: 15 mm, color: silver

i Max. current carrying capacity: 125 A

Fixed bridge

Fixed bridge - FBI 3-15 - 0201278

<https://www.phoenixcontact.com/de/produkte/0201278>



Fixed bridge, pitch: 15 mm, color: silver

i Max. current carrying capacity: 125 A

Feed-through terminal block - UK 35

3008012

<https://www.phoenixcontact.com/de/produkte/3008012>



Fixed bridge

Fixed bridge - FBI 5-15 - 0711302

<https://www.phoenixcontact.com/de/produkte/0711302>

Fixed bridge, pitch: 15 mm, color: silver



 Max. current carrying capacity: 125 A


Insertion bridge

Insertion bridge - EB 2-15 - 0203166

<https://www.phoenixcontact.com/de/produkte/0203166>

Insertion bridge, pitch: 15.25 mm, color: gray



 Max. current carrying capacity: 76 A

Feed-through terminal block - UK 35

3008012

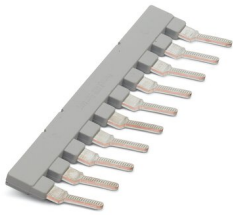
<https://www.phoenixcontact.com/de/produkte/3008012>



Insertion bridge

Insertion bridge - EB 10-15 - 0205135

<https://www.phoenixcontact.com/de/produkte/0205135>



Insertion bridge, pitch: 15.25 mm, color: gray

 Max. current carrying capacity: 76 A


Insertion bridge

Insertion bridge - EB 2-15 K/UK 35 - 0205119

<https://www.phoenixcontact.com/de/produkte/0205119>



Insertion bridge, pitch: 15 mm, color: gray

 Max. current carrying capacity: 76 A

Feed-through terminal block - UK 35

3008012

<https://www.phoenixcontact.com/de/produkte/3008012>




Insertion bridge

Insertion bridge - EB 3-15 K/UK 35 - 0205106

<https://www.phoenixcontact.com/de/produkte/0205106>

Insertion bridge, pitch: 15 mm, color: gray



 Max. current carrying capacity: 76 A


Insertion bridge

Insertion bridge - EB 10-15 K/UK 35 - 0205096

<https://www.phoenixcontact.com/de/produkte/0205096>

Insertion bridge, pitch: 15 mm, color: gray



 Max. current carrying capacity: 76 A

Feed-through terminal block - UK 35

3008012

<https://www.phoenixcontact.com/de/produkte/3008012>



Switching jumper

Switching jumper - SBH 2-15 - 0205232

<https://www.phoenixcontact.com/de/produkte/0205232>



Switching jumper, pitch: 15 mm, color: silver

 Max. current carrying capacity: 120 A

Warning label

Warning label - WS 5-15 - 1004445

<https://www.phoenixcontact.com/de/produkte/1004445>

Warning label, Plate, orange, labeled: Lightning flash and warning in English, mounting type: plug in, for terminal block width: 15 mm, diameter: 0 mm



Feed-through terminal block - UK 35

3008012

<https://www.phoenixcontact.com/de/produkte/3008012>

DIN rail perforated

DIN rail perforated - NS 32 PERF 2000MM-VPE 10 - 1201002

<https://www.phoenixcontact.com/de/produkte/1201002>



DIN rail perforated, acc. to EN 60715, material: Steel, galvanized, passivated with a thick layer, G profile, color: silver, Pack of 10 (20 m)

Warning label

Warning label - WS 4-15 - 1004241

<https://www.phoenixcontact.com/de/produkte/1004241>



Warning label, Plate, orange, labeled: Lightning flash and warning in English, mounting type: plug in, for terminal block width: 15 mm, diameter: 0 mm

Feed-through terminal block - UK 35

3008012

<https://www.phoenixcontact.com/de/produkte/3008012>

DIN rail, unperforated

DIN rail, unperforated - NS 32 UNPERF 2000MM-VPE 10 - 1201015

<https://www.phoenixcontact.com/de/produkte/1201015>



DIN rail, unperforated, acc. to EN 60715, material: Steel, galvanized, passivated with a thick layer, G profile, color: silver, Pack of 10 (20 m)

Cover

Cover - EA 11 - 1024263

<https://www.phoenixcontact.com/de/produkte/1024263>



Single cover, for covering one terminal block, snap fit, cannot be labeled, color: transparent

Feed-through terminal block - UK 35

3008012

<https://www.phoenixcontact.com/de/produkte/3008012>



DIN rail perforated

DIN rail perforated - NS 35/ 7,5 PERF 2000MM - 0801733

<https://www.phoenixcontact.com/de/produkte/0801733>



DIN rail perforated, acc. to EN 60715, material: Steel, galvanized, passivated with a thick layer, Standard profile, color: silver, Pack of 25 (50 m)

Step bracket

Step bracket - STL 35/10 - 0204084

<https://www.phoenixcontact.com/de/produkte/0204084>



Step bracket, color: silver

Feed-through terminal block - UK 35

3008012

<https://www.phoenixcontact.com/de/produkte/3008012>



DIN rail, unperforated

DIN rail, unperforated - NS 35/ 7,5 UNPERF 2000MM - 0801681

<https://www.phoenixcontact.com/de/produkte/0801681>



DIN rail, unperforated, acc. to EN 60715, material: Steel, galvanized, passivated with a thick layer, Standard profile, color: silver, Pack of 25 (50 m)

Step bracket

Step bracket - STL 35/ 5 - 0204107

<https://www.phoenixcontact.com/de/produkte/0204107>



Step bracket, pitch: 5 mm, color: silver

Feed-through terminal block - UK 35

3008012

<https://www.phoenixcontact.com/de/produkte/3008012>



DIN rail perforated

DIN rail perforated - NS 35/ 7,5 WH PERF 2000MM - 1204119

<https://www.phoenixcontact.com/de/produkte/1204119>



DIN rail perforated, acc. to EN 60715, material: Steel, Galvanized, white passivated, Standard profile, color: silver, Pack of 25 (50 m)

Step bracket

Step bracket - STL 35/16 - 0204097

<https://www.phoenixcontact.com/de/produkte/0204097>



Step bracket, color: silver

Feed-through terminal block - UK 35

3008012

<https://www.phoenixcontact.com/de/produkte/3008012>



DIN rail, unperforated

DIN rail, unperforated - NS 35/ 7,5 WH UNPERF 2000MM-VPE 10 - 1204122

<https://www.phoenixcontact.com/de/produkte/1204122>



DIN rail, unperforated, acc. to EN 60715, material: Steel, Galvanized, white passivated, Standard profile, color: silver, Pack of 10 (20 m)

Separating plate

Separating plate - TS-K - 1302215

<https://www.phoenixcontact.com/de/produkte/1302215>



Separating plate, length: 22 mm, width: 0.5 mm, height: 22 mm, color: gray

Feed-through terminal block - UK 35

3008012

<https://www.phoenixcontact.com/de/produkte/3008012>



DIN rail, unperforated

DIN rail, unperforated - NS 35/ 7,5 AL UNPERF 2000MM - 0801704

<https://www.phoenixcontact.com/de/produkte/0801704>



DIN rail, unperforated, acc. to EN 60715, material: Aluminum, uncoated, Standard profile, color: silver, Pack of 25 (50 m)

Separating plate

Separating plate - TP-UK 35 - 3008096

<https://www.phoenixcontact.com/de/produkte/3008096>



Separating plate, length: 50 mm, width: 7.5 mm, height: 52 mm, color: gray

Feed-through terminal block - UK 35

3008012

<https://www.phoenixcontact.com/de/produkte/3008012>



DIN rail perforated

DIN rail perforated - NS 35/ 7,5 ZN PERF 2000MM - 1206421

<https://www.phoenixcontact.com/de/produkte/1206421>



DIN rail perforated, acc. to EN 60715, material: Steel, galvanized, Standard profile, color: silver, Pack of 25 (50 m)

DIN rail, unperforated

DIN rail, unperforated - NS 35/ 7,5 ZN UNPERF 2000MM - 1206434

<https://www.phoenixcontact.com/de/produkte/1206434>



DIN rail, unperforated, acc. to EN 60715, material: Steel, galvanized, Standard profile, color: silver, Pack of 25 (50 m)

Feed-through terminal block - UK 35

3008012

<https://www.phoenixcontact.com/de/produkte/3008012>

DIN rail, unperforated

DIN rail, unperforated - NS 35/ 7,5 CU UNPERF 2000MM-VPE 10 - 0801762

<https://www.phoenixcontact.com/de/produkte/0801762>



DIN rail, unperforated, acc. to EN 60715, material: Copper, uncoated, Standard profile, color: copper-colored, Pack of 10 (20 m)

End cap

End cap - NS 35/ 7,5 CAP - 1206560

<https://www.phoenixcontact.com/de/produkte/1206560>

DIN rail end piece, for DIN rail NS 35/7.5



Feed-through terminal block - UK 35

3008012

<https://www.phoenixcontact.com/de/produkte/3008012>

DIN rail perforated

DIN rail perforated - NS 35/15 PERF 2000MM - 1201730

<https://www.phoenixcontact.com/de/produkte/1201730>



DIN rail perforated, similar to EN 60715, material: Steel, galvanized, passivated with a thick layer, Standard profile, color: silver, Pack of 25 (50 m)

DIN rail, unperforated

DIN rail, unperforated - NS 35/15 UNPERF 2000MM - 1201714

<https://www.phoenixcontact.com/de/produkte/1201714>



DIN rail, unperforated, similar to EN 60715, material: Steel, galvanized, passivated with a thick layer, Standard profile, color: silver, Pack of 25 (50 m)

Feed-through terminal block - UK 35

3008012

<https://www.phoenixcontact.com/de/produkte/3008012>

DIN rail perforated

DIN rail perforated - NS 35/15 WH PERF 2000MM - 0806602

<https://www.phoenixcontact.com/de/produkte/0806602>



DIN rail perforated, similar to EN 60715, material: Steel, Galvanized, white passivated, Standard profile, color: white, Pack of 25 (50 m)

DIN rail, unperforated

DIN rail, unperforated - NS 35/15 WH UNPERF 2000MM-VPE 10 - 1204135

<https://www.phoenixcontact.com/de/produkte/1204135>



DIN rail, unperforated, similar to EN 60715, material: Steel, Galvanized, white passivated, Standard profile, color: silver, Pack of 10 (20 m)

Feed-through terminal block - UK 35

3008012

<https://www.phoenixcontact.com/de/produkte/3008012>

DIN rail, unperforated

DIN rail, unperforated - NS 35/15 AL UNPERF 2000MM - 1201756

<https://www.phoenixcontact.com/de/produkte/1201756>



DIN rail, unperforated, similar to EN 60715, material: Aluminum, uncoated, Standard profile, color: silver

DIN rail perforated

DIN rail perforated - NS 35/15 ZN PERF 2000MM - 1206599

<https://www.phoenixcontact.com/de/produkte/1206599>



DIN rail perforated, similar to EN 60715, material: Steel, galvanized, Standard profile, color: silver, Pack of 25 (50 m)

Feed-through terminal block - UK 35

3008012

<https://www.phoenixcontact.com/de/produkte/3008012>

DIN rail, unperforated

DIN rail, unperforated - NS 35/15 ZN UNPERF 2000MM - 1206586

<https://www.phoenixcontact.com/de/produkte/1206586>



DIN rail, unperforated, similar to EN 60715, material: Steel, galvanized, Standard profile, color: silver, Pack of 25 (50 m)

DIN rail, unperforated

DIN rail, unperforated - NS 35/15 CU UNPERF 2000MM-VPE 10 - 1201895

<https://www.phoenixcontact.com/de/produkte/1201895>



DIN rail, unperforated, similar to EN 60715, material: Copper, uncoated, Standard profile, color: copper-colored, Pack of 10 (20 m)

Feed-through terminal block - UK 35

3008012

<https://www.phoenixcontact.com/de/produkte/3008012>



End cap

End cap - NS 35/15 CAP - 1206573

<https://www.phoenixcontact.com/de/produkte/1206573>

DIN rail end piece, for DIN rail NS 35/15



DIN rail, unperforated

DIN rail, unperforated - NS 35/15-2,3 UNPERF 2000MM-VPE 10 - 1201798

<https://www.phoenixcontact.com/de/produkte/1201798>



DIN rail, unperforated, acc. to EN 60715, material: Steel, galvanized, passivated with a thick layer, Standard profile 2.3 mm, color: silver, Pack of 10 (20 m)

Feed-through terminal block - UK 35

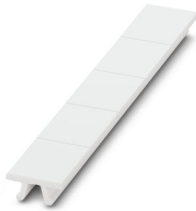
3008012

<https://www.phoenixcontact.com/de/produkte/3008012>

Zack marker strip

Zack marker strip - ZB 15:UNBEDRUCKT - 0811972

<https://www.phoenixcontact.com/de/produkte/0811972>

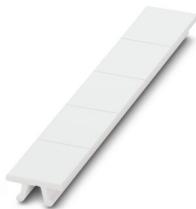


Zack marker strip, Strip, white, unlabeled, can be labeled with: PLOTMARK, CMS-P1-PLOTTER, mounting type: snapped, for terminal block width: 15.2 mm, lettering field size: 10.5 x 15.1 mm, Number of individual labels: 5

Zack marker strip

Zack marker strip - ZB 15 CUS - 0824945

<https://www.phoenixcontact.com/de/produkte/0824945>



Zack marker strip, can be ordered: Strip, white, labeled according to customer specifications, mounting type: snap into tall marker groove, for terminal block width: 15.2 mm, lettering field size: 10.5 x 15.1 mm, Number of individual labels: 5

Feed-through terminal block - UK 35

3008012

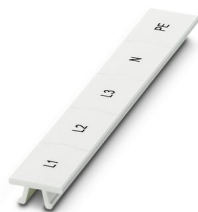
<https://www.phoenixcontact.com/de/produkte/3008012>



Zack marker strip

Zack marker strip - ZB 15,LGS:L1-N,PE - 0811998

<https://www.phoenixcontact.com/de/produkte/0811998>



Zack marker strip, Strip, white, labeled, printed horizontally: L1, L2, L3, N, PE, mounting type: snapped, for terminal block width: 15.2 mm, lettering field size: 10.5 x 15.1 mm, Number of individual labels: 5

Test plugs

Test plugs - PS-MT - 0311647

<https://www.phoenixcontact.com/de/produkte/0311647>



Test plugs, color: silver

Feed-through terminal block - UK 35

3008012

<https://www.phoenixcontact.com/de/produkte/3008012>



Insulating sleeve

Insulating sleeve - PS-IH WH - 0311566

<https://www.phoenixcontact.com/de/produkte/0311566>



Insulating sleeve, color: white

Insulating sleeve

Insulating sleeve - PS-IH RD - 0311579

<https://www.phoenixcontact.com/de/produkte/0311579>



Insulating sleeve, color: red

Feed-through terminal block - UK 35

3008012

<https://www.phoenixcontact.com/de/produkte/3008012>

Insulating sleeve

Insulating sleeve - PS-IH BU - 0311582

<https://www.phoenixcontact.com/de/produkte/0311582>



Insulating sleeve, color: blue

Insulating sleeve

Insulating sleeve - PS-IH YE - 0311595

<https://www.phoenixcontact.com/de/produkte/0311595>



Insulating sleeve, color: yellow

Feed-through terminal block - UK 35

3008012

<https://www.phoenixcontact.com/de/produkte/3008012>



Insulating sleeve

Insulating sleeve - PS-IH GN - 0311605

<https://www.phoenixcontact.com/de/produkte/0311605>



Insulating sleeve, color: green

Insulating sleeve

Insulating sleeve - PS-IH GY - 0311621

<https://www.phoenixcontact.com/de/produkte/0311621>



Insulating sleeve, color: gray

Feed-through terminal block - UK 35

3008012

<https://www.phoenixcontact.com/de/produkte/3008012>



Insulating sleeve

Insulating sleeve - PS-IH BK - 0311634

<https://www.phoenixcontact.com/de/produkte/0311634>



Insulating sleeve, color: black

Insulating sleeve

Insulating sleeve - PS-IH VT - 0311618

<https://www.phoenixcontact.com/de/produkte/0311618>



Insulating sleeve, color: violet

Feed-through terminal block - UK 35

3008012

<https://www.phoenixcontact.com/de/produkte/3008012>

End clamp

End clamp - CLIPFIX 35 - 3022218

<https://www.phoenixcontact.com/de/produkte/3022218>



Quick mounting end clamp for NS 35/7,5 DIN rail or NS 35/15 DIN rail, with marking option, width: 9.5 mm, color: gray

End clamp

End clamp - CLIPFIX 35-5 - 3022276

<https://www.phoenixcontact.com/de/produkte/3022276>



Quick mounting end clamp for NS 35/7,5 DIN rail or NS 35/15 DIN rail, with marking option, with parking option for FBS...5, FBS...6, KSS 5, KSS 6, width: 5.15 mm, color: gray

Feed-through terminal block - UK 35

3008012

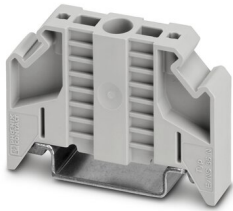
<https://www.phoenixcontact.com/de/produkte/3008012>

End clamp

End clamp - E/NS 35 N - 0800886

<https://www.phoenixcontact.com/de/produkte/0800886>

End clamp, width: 9.5 mm, color: gray



End clamp

End clamp - E/UK - 1201442

<https://www.phoenixcontact.com/de/produkte/1201442>

End clamp, material: PA, color: gray, Mounting on a DIN rail NS 32 or NS 35



Feed-through terminal block - UK 35

3008012

<https://www.phoenixcontact.com/de/produkte/3008012>

End clamp

End clamp - E/UK 1 - 1201413

<https://www.phoenixcontact.com/de/produkte/1201413>



End clamps, for supporting the ends of double-level and three-level terminal blocks, width: 10 mm, color: gray

Female test connector

Female test connector - PSB 6/5/6 - 0205290

<https://www.phoenixcontact.com/de/produkte/0205290>



Female test connector, color: silver

Phoenix Contact 2022 © - all rights reserved
<https://www.phoenixcontact.com>

PHOENIX CONTACT Deutschland GmbH
Flachsmarktstraße 8
D-32825 Blomberg
+49 52 35/3-1 20 00
info@phoenixcontact.de