

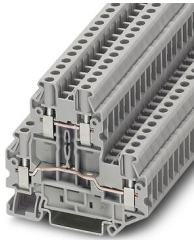
# Double-level terminal block - UTTB 4

3044814

<https://www.phoenixcontact.com/de/produkte/3044814>

Please be informed that the data shown in this PDF document is generated from our Online Catalog. Please find the complete data in the user documentation. Our General Terms of Use for Downloads are valid.

---



Double-level terminal block, nom. voltage: 800 V, nominal current: 30 A, connection method: Screw connection, Rated cross section: 4 mm<sup>2</sup>, cross section: 0.14 mm<sup>2</sup> - 6 mm<sup>2</sup>, mounting type: NS 35/7,5, NS 35/15, color: gray

---

## Your advantages

- Since there are two function shafts per level, all potential distribution tasks can be implemented quickly
- For a clear overview, each terminal point supports large-surface labeling
- As an option, the levels can be connected using the FBS-PV UT vertical bridge
- For example, two separate potentials can be routed side by side with the help of bridging between non-adjacent terminal blocks
- Tested for railway applications

# Double-level terminal block - UTTB 4



3044814

<https://www.phoenixcontact.com/de/produkte/3044814>

## Commercial Data

Item number	3044814
Packing unit	50 pc
Minimum order quantity	1 pc
Sales Key	A1 - Reihenklennen
Product Key	BE1114
Catalog Page	Page 160 (C-1-2019)
GTIN	4046356055512
Weight per Piece (including packing)	19,366 g
Weight per Piece (excluding packing)	18,434 g
Customs tariff number	85369010
Country of origin	DE

# Double-level terminal block - UTTB 4



3044814

<https://www.phoenixcontact.com/de/produkte/3044814>

## Technical Data

### Product properties

Product type	Multi-level terminal block
Area of application	Railway industry
	Machine building
	Plant engineering
	Process industry
Number of connections	4
Number of rows	2
Potentials	2

### Insulation characteristics

Overvoltage category	III
Degree of pollution	3

### Electrical properties

Rated surge voltage	8 kV
Maximum power dissipation for nominal condition	1.02 W

### Connection data

Number of connections per level	2
Nominal cross section	4 mm <sup>2</sup>

### Level 1+2

Screw thread	M3
Tightening torque	0.6 ... 0.8 Nm
Stripping length	9 mm
Internal cylindrical gage	A4
Conductor cross section solid	0.14 mm <sup>2</sup> ... 6 mm <sup>2</sup>
Cross section AWG	26 ... 10
Conductor cross section flexible	0.14 mm <sup>2</sup> ... 6 mm <sup>2</sup>
Conductor cross section, flexible [AWG]	26 ... 10
Flexible conductor cross section flexible (ferrule, w/o plastic sleeve)	0.14 mm <sup>2</sup> ... 4 mm <sup>2</sup>
Flexible conductor cross section (ferrule with plastic sleeve)	0.14 mm <sup>2</sup> ... 4 mm <sup>2</sup>
2 conductors with same cross section, solid	0.14 mm <sup>2</sup> ... 1.5 mm <sup>2</sup>
2 conductors with same cross section, flexible	0.14 mm <sup>2</sup> ... 1.5 mm <sup>2</sup>
2 conductors with same cross section, flexible, with ferrule without plastic sleeve	0.14 mm <sup>2</sup> ... 1.5 mm <sup>2</sup>
2 conductors with the same cross section, flexible, with TWIN ferrule with plastic sleeve	0.5 mm <sup>2</sup> ... 2.5 mm <sup>2</sup>
Nominal current	30 A
Maximum load current	36 A (with 6 mm <sup>2</sup> conductor cross section)
Nominal voltage	800 V

# Double-level terminal block - UTTB 4



3044814

<https://www.phoenixcontact.com/de/produkte/3044814>

Nominal cross section	4 mm <sup>2</sup>
-----------------------	-------------------

## Ex data

### Rated data (ATEX/IECEX)

ATEX certificate	KEMA 06 ATEX 0017 U
IEC Ex certificate	IECEX KEM 06.0013 U
Identification	□ II 2 GD Ex eb IIC Gb
Operating temperature range	-60 °C ... 110 °C
Ex-certified accessories	3047293 D-UTTBT 2,5/4 3047303 DP-UTTBT 2,5/4 3047316 ATP-UTTBT 2,5/4 1212587 SF-SL 0,6X3,5-100 S-VDE 3022276 CLIPFIX 35-5 3022218 CLIPFIX 35
Bridge data	25.5 A / 4 mm <sup>2</sup>
Ex temperature increase	40 K (28.5 A / 4 mm <sup>2</sup> )
Rated voltage	400 V
for bridging with bridge	440 V
- At bridging between non-adjacent terminal blocks	275 V
- At bridging between non-adjacent terminal blocks via PE terminal block	275 V
- At cut-to-length bridging with cover	220 V
- At cut-to-length bridging with partition plate	176 V
Rated insulation voltage	400 V

### Ex level General

Rated current	25.5 A
Maximum load current	31.5 A

### Ex connection data General

Torque range	0.6 Nm ... 0.8 Nm
Nominal cross section	4 mm <sup>2</sup>
Rated cross section AWG	12
Connection capacity rigid	0.14 mm <sup>2</sup> ... 6 mm <sup>2</sup>
Connection capacity AWG	26 ... 10
Connection capacity flexible	0.14 mm <sup>2</sup> ... 4 mm <sup>2</sup>
Connection capacity AWG	26 ... 12
2 conductors with same cross section, solid	0.14 mm <sup>2</sup> ... 1.5 mm <sup>2</sup>
2 conductors with the same cross-section AWG rigid	26 ... 16
2 conductors with same cross section, stranded	0.14 mm <sup>2</sup> ... 1.5 mm <sup>2</sup>
2 conductors with the same cross-section AWG flexible	26 ... 16

### Ex level Level 1

Contact resistance	0.35 mΩ
--------------------	---------

### Ex level Level 2

# Double-level terminal block - UTTB 4



3044814

<https://www.phoenixcontact.com/de/produkte/3044814>

Contact resistance	0.2 mΩ
--------------------	--------

## Dimensions

Width	6.2 mm
End cover width	2.2 mm
Height NS 35/15	72.5 mm
Height NS 35/7,5	65 mm
Length	69.9 mm

## Material specifications

Color	gray
Flammability rating according to UL 94	V0
Insulating material group	I
Insulating material	PA
Static insulating material application in cold	-60 °C
Temperature index of insulation material (DIN EN 60216-1 (VDE 0304-21))	130 °C
Relative insulation material temperature index (Elec., UL 746 B)	130 °C
Fire protection for rail vehicles (DIN EN 45545-2) R22	HL 1 - HL 3
Fire protection for rail vehicles (DIN EN 45545-2) R23	HL 1 - HL 3
Fire protection for rail vehicles (DIN EN 45545-2) R24	HL 1 - HL 3
Fire protection for rail vehicles (DIN EN 45545-2) R26	HL 1 - HL 3
Calorimetric heat release NFPA 130 (ASTM E 1354)	28 MJ/kg
Surface flammability NFPA 130 (ASTM E 162)	passed
Specific optical density of smoke NFPA 130 (ASTM E 662)	passed
Smoke gas toxicity NFPA 130 (SMP 800C)	passed

## Electrical tests

### Surge voltage test

Result	Test passed
--------	-------------

### Temperature-rise test

Requirement temperature-rise test	Increase in temperature $\leq$ 45 K
Result	Test passed
Short-time withstand current 4 mm <sup>2</sup>	0.48 kA
Short-time withstand current 6 mm <sup>2</sup>	0.72 kA
Result	Test passed

### Power-frequency withstand voltage

Test voltage setpoint	2 kV
Result	Test passed

## Mechanical properties

### Mechanical data

Open side panel	Yes
-----------------	-----

# Double-level terminal block - UTTB 4



3044814

<https://www.phoenixcontact.com/de/produkte/3044814>

## Mechanical tests

### Mechanical strength

Result	Test passed
--------	-------------

### Attachment on the carrier

DIN rail/fixing support	NS 35
Test force setpoint	1 N
Result	Test passed

### Test for conductor damage and slacking

Rotation speed	10 rpm
Revolutions	135
Conductor cross section/weight	0.14 mm <sup>2</sup> / 0.2 kg
	4 mm <sup>2</sup> / 0.9 kg
	6 mm <sup>2</sup> / 1.4 kg
Result	Test passed

## Environmental and real-life conditions

### Aging

Temperature cycles	192
--------------------	-----

### Needle-flame test

Time of exposure	30 s
Result	Test passed

### Ambient conditions

Ambient temperature (operation)	-60 °C ... 105 °C (max. short-term operating temperature RTI Elec.)
Ambient temperature (storage/transport)	-25 °C ... 60 °C (for a short time, not exceeding 24 h, -60 °C to +70 °C)
Ambient temperature (assembly)	-5 °C ... 70 °C
Ambient temperature (actuation)	-5 °C ... 70 °C
Permissible humidity (storage/transport)	30 % ... 70 %

## Standards and regulations

Connection in acc. with standard	IEC 60947-7-1
----------------------------------	---------------

## Mounting

Mounting type	NS 35/7,5
	NS 35/15

# Double-level terminal block - UTTB 4

3044814

<https://www.phoenixcontact.com/de/produkte/3044814>

## Drawings

Circuit diagram



# Double-level terminal block - UTTB 4



3044814

<https://www.phoenixcontact.com/de/produkte/3044814>

## Approvals

**DNV**

Approval ID: TAE00001S9



**CSA**

Approval ID: 13631

	Nominal Voltage $U_N$	Nominal Current $I_N$	Cross Section AWG	Cross Section $mm^2$
Use group B	300 V	30 A	26 - 10	-
Use group C	300 V	30 A	26 - 10	-
Use group D	600 V	5 A	26 - 10	-



**EAC**

Approval ID: RU C-DE.BL08.B.00534



**cULus Recognized**

Approval ID: E60425

	Nominal Voltage $U_N$	Nominal Current $I_N$	Cross Section AWG	Cross Section $mm^2$
Use group B	300 V	30 A	26 - 10	-
Multi-conductor connection	300 V	30 A	26 - 14	-
Use group C	300 V	30 A	26 - 10	-
Multi-conductor connection	300 V	30 A	26 - 14	-
Use group D	600 V	5 A	26 - 10	-
Multi-conductor connection	600 V	5 A	26 - 14	-



**RS**

Approval ID: 17.00013.272



**PRS**

Approval ID: TE/2156/880590/17



# Double-level terminal block - UTTB 4



3044814

<https://www.phoenixcontact.com/de/produkte/3044814>



**ATEX**

Approval ID: KEMA06ATEX0017U



**cUL Recognized**

Approval ID: E192998

	Nominal Voltage $U_N$	Nominal Current $I_N$	Cross Section AWG	Cross Section $\text{mm}^2$
Use group B	300 V	30 A	26 - 10	-
Use group C	300 V	30 A	26 - 10	-



**EAC Ex**

Approval ID: RU C-DE.HA91.B.00066



**IECEX**

Approval ID: IECEX KEM 06.0013U



**UL Recognized**

Approval ID: E192998

	Nominal Voltage $U_N$	Nominal Current $I_N$	Cross Section AWG	Cross Section $\text{mm}^2$
Use group B	300 V	30 A	26 - 10	-
Use group C	300 V	30 A	26 - 10	-



**CCC**

Approval ID: 2020322313000622



**NEPSI**

Approval ID: GYJ20.1194U

**cULus Recognized**

# Double-level terminal block - UTTB 4



3044814

<https://www.phoenixcontact.com/de/produkte/3044814>

## Classifications

### ECLASS

ECLASS-9.0	27141120
ECLASS-10.0.1	27141120
ECLASS-11.0	27141120

### ETIM

ETIM 8.0	EC000897
----------	----------

### UNSPSC

UNSPSC 21.0	39121400
-------------	----------

# Double-level terminal block - UTTB 4



3044814

<https://www.phoenixcontact.com/de/produkte/3044814>

## Environmental Product Compliance

REACH SVHC	Lead 7439-92-1
China RoHS	Environmentally Friendly Use Period = 50 years
	For information on hazardous substances, refer to the manufacturer's declaration available under "Downloads"

# Double-level terminal block - UTTB 4

3044814

<https://www.phoenixcontact.com/de/produkte/3044814>

## Accessories

**i** Note: Applying some accessories below might limit this product.

### Plug-in bridge

Plug-in bridge - FBS 2-6 - 3030336

<https://www.phoenixcontact.com/de/produkte/3030336>



Plug-in bridge, pitch: 6.2 mm, color: red

**i** Max. current carrying capacity: 30 A

---

### Plug-in bridge

Plug-in bridge - FBS 3-6 - 3030242

<https://www.phoenixcontact.com/de/produkte/3030242>



Plug-in bridge, pitch: 6.2 mm, color: red

**i** Max. current carrying capacity: 30 A

# Double-level terminal block - UTTB 4

3044814

<https://www.phoenixcontact.com/de/produkte/3044814>




## Plug-in bridge

Plug-in bridge - FBS 4-6 - 3030255

<https://www.phoenixcontact.com/de/produkte/3030255>



Plug-in bridge, pitch: 6.2 mm, color: red

 Max. current carrying capacity: 30 A

---


## Plug-in bridge

Plug-in bridge - FBS 5-6 - 3030349

<https://www.phoenixcontact.com/de/produkte/3030349>



Plug-in bridge, pitch: 6.2 mm, color: red

 Max. current carrying capacity: 30 A

# Double-level terminal block - UTTB 4

3044814

<https://www.phoenixcontact.com/de/produkte/3044814>

## Plug-in bridge

Plug-in bridge - FBS 6-6 - 1008238

<https://www.phoenixcontact.com/de/produkte/1008238>



Plug-in bridge, Version with single- or double-sided cutting edge. Keep in mind the possible impact on touch protection as well as the air clearances and creepage distances. For applications in explosion-proof areas, the voltage reduces to the voltage specified in the Ex certificate for bridges that are cut to length., One side not fully isolated, pitch: 6.2 mm, color: red

 Max. current carrying capacity: 30 A

---


## Plug-in bridge

Plug-in bridge - FBS 10-6 - 3030271

<https://www.phoenixcontact.com/de/produkte/3030271>



Plug-in bridge, pitch: 6.2 mm, color: red

 Max. current carrying capacity: 30 A

# Double-level terminal block - UTTB 4

3044814

<https://www.phoenixcontact.com/de/produkte/3044814>




## Plug-in bridge

Plug-in bridge - FBS 20-6 - 3030365

<https://www.phoenixcontact.com/de/produkte/3030365>



Plug-in bridge, pitch: 6.2 mm, color: red

 Max. current carrying capacity: 30 A

---


## Plug-in bridge

Plug-in bridge - FBS 50-6 - 3032224

<https://www.phoenixcontact.com/de/produkte/3032224>



Plug-in bridge, pitch: 6.2 mm, color: red

 Max. current carrying capacity: 30 A

# Double-level terminal block - UTTB 4

3044814

<https://www.phoenixcontact.com/de/produkte/3044814>


## Plug-in bridge

Plug-in bridge - FBSR 2-6 - 3033715

<https://www.phoenixcontact.com/de/produkte/3033715>



Plug-in bridge, pitch: 6.2 mm, color: red

 Max. current carrying capacity: 24 A

---


## Plug-in bridge

Plug-in bridge - FBSR 3-6 - 3001594

<https://www.phoenixcontact.com/de/produkte/3001594>



Plug-in bridge, pitch: 6.2 mm, color: red

 Max. current carrying capacity: 24 A

---



# Double-level terminal block - UTTB 4

3044814

<https://www.phoenixcontact.com/de/produkte/3044814>



## Plug-in bridge

Plug-in bridge - FBSR 4-6 - 3001595

<https://www.phoenixcontact.com/de/produkte/3001595>



Plug-in bridge, pitch: 6.2 mm, color: red

 Max. current carrying capacity: 24 A

---

## Plug-in bridge

Plug-in bridge - FBSR 5-6 - 3001596

<https://www.phoenixcontact.com/de/produkte/3001596>



Plug-in bridge, pitch: 6.2 mm, color: red

 Max. current carrying capacity: 24 A

# Double-level terminal block - UTTB 4

3044814

<https://www.phoenixcontact.com/de/produkte/3044814>




## Plug-in bridge

Plug-in bridge - FBSR 10-6 - 3033716

<https://www.phoenixcontact.com/de/produkte/3033716>



Plug-in bridge, pitch: 6.2 mm, color: red

 Max. current carrying capacity: 24 A

---

## Potential bridge

Potential bridge - FBS-PV UT - 3047358

<https://www.phoenixcontact.com/de/produkte/3047358>



Vertical potential bridge, to connect the upper and lower level

# Double-level terminal block - UTTB 4

3044814

<https://www.phoenixcontact.com/de/produkte/3044814>




## Short-circuit connector

Short-circuit connector - FBSRH 2-6 - 3033812

<https://www.phoenixcontact.com/de/produkte/3033812>



Short-circuit connector, pitch: 6.2 mm, color: red

 Max. current carrying capacity: 24 A

---


## Plug-in bridge

Plug-in bridge - FBS 2-6 BU - 3036932

<https://www.phoenixcontact.com/de/produkte/3036932>



Plug-in bridge, pitch: 6.2 mm, color: blue

 Max. current carrying capacity: 30 A

# Double-level terminal block - UTTB 4

3044814

<https://www.phoenixcontact.com/de/produkte/3044814>




## Plug-in bridge

Plug-in bridge - FBS 3-6 BU - 3036945

<https://www.phoenixcontact.com/de/produkte/3036945>



Plug-in bridge, pitch: 6.2 mm, color: blue

 Max. current carrying capacity: 30 A

---


## Plug-in bridge

Plug-in bridge - FBS 4-6 BU - 3036958

<https://www.phoenixcontact.com/de/produkte/3036958>



Plug-in bridge, pitch: 6.2 mm, color: blue

 Max. current carrying capacity: 30 A

# Double-level terminal block - UTTB 4

3044814

<https://www.phoenixcontact.com/de/produkte/3044814>




## Plug-in bridge

Plug-in bridge - FBS 5-6 BU - 3036961

<https://www.phoenixcontact.com/de/produkte/3036961>



Plug-in bridge, pitch: 6.2 mm, color: blue

 Max. current carrying capacity: 30 A

---


## Plug-in bridge

Plug-in bridge - FBS 10-6 BU - 3032198

<https://www.phoenixcontact.com/de/produkte/3032198>



Plug-in bridge, pitch: 6.2 mm, color: blue

 Max. current carrying capacity: 30 A

# Double-level terminal block - UTTB 4

3044814

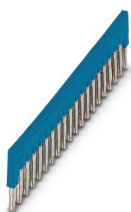
<https://www.phoenixcontact.com/de/produkte/3044814>




## Plug-in bridge

Plug-in bridge - FBS 20-6 BU - 3032208

<https://www.phoenixcontact.com/de/produkte/3032208>



Plug-in bridge, pitch: 6.2 mm, color: blue

 Max. current carrying capacity: 30 A

---


## Plug-in bridge

Plug-in bridge - FBS 50-6 BU - 3032211

<https://www.phoenixcontact.com/de/produkte/3032211>



Plug-in bridge, pitch: 6.2 mm, color: blue

 Max. current carrying capacity: 30 A

# Double-level terminal block - UTTB 4

3044814

<https://www.phoenixcontact.com/de/produkte/3044814>

## End cover

End cover - D-UTT 2,5/4 - 3047293

<https://www.phoenixcontact.com/de/produkte/3047293>

End cover, length: 69.9 mm, width: 2.2 mm, height: 57.5 mm, color: gray



---

## DIN rail perforated

DIN rail perforated - NS 35/ 7,5 PERF 2000MM - 0801733

<https://www.phoenixcontact.com/de/produkte/0801733>

DIN rail perforated, acc. to EN 60715, material: Steel, galvanized, passivated with a thick layer, Standard profile, color: silver, Pack of 25 (50 m)



# Double-level terminal block - UTTB 4

3044814

<https://www.phoenixcontact.com/de/produkte/3044814>

## Spacer plate

Spacer plate - DP-UTT B 2,5/4 - 3047303

<https://www.phoenixcontact.com/de/produkte/3047303>

Spacer plate, length: 69.9 mm, width: 2.6 mm, height: 33 mm, color: gray



---

## DIN rail, unperforated

DIN rail, unperforated - NS 35/ 7,5 UNPERF 2000MM - 0801681

<https://www.phoenixcontact.com/de/produkte/0801681>

DIN rail, unperforated, acc. to EN 60715, material: Steel, galvanized, passivated with a thick layer, Standard profile, color: silver, Pack of 25 (50 m)





# Double-level terminal block - UTTB 4

3044814

<https://www.phoenixcontact.com/de/produkte/3044814>

## Partition plate

Partition plate - ATP-UTT 2,5/4 - 3047316

<https://www.phoenixcontact.com/de/produkte/3047316>

Partition plate, length: 74.3 mm, width: 2.2 mm, height: 70 mm, color: gray



---

## DIN rail perforated

DIN rail perforated - NS 35/ 7,5 WH PERF 2000MM - 1204119

<https://www.phoenixcontact.com/de/produkte/1204119>

DIN rail perforated, acc. to EN 60715, material: Steel, Galvanized, white passivated, Standard profile, color: silver, Pack of 25 (50 m)



# Double-level terminal block - UTTB 4

3044814

<https://www.phoenixcontact.com/de/produkte/3044814>

## Screwdriver

Screwdriver - SF-SL 0,6X3,5-100 S-VDE - 1212587

<https://www.phoenixcontact.com/de/produkte/1212587>



Actuation tool, for ST terminal blocks, VDE insulated, with slimmer insulation integrated in the blade, also suitable for use as a bladed screwdriver, size: 0.6 x 3.5 x 100 mm, 2-component grip, with non-slip grip

---

## DIN rail, unperforated

DIN rail, unperforated - NS 35/ 7,5 WH UNPERF 2000MM-VPE 10 - 1204122

<https://www.phoenixcontact.com/de/produkte/1204122>



DIN rail, unperforated, acc. to EN 60715, material: Steel, Galvanized, white passivated, Standard profile, color: silver, Pack of 10 (20 m)

# Double-level terminal block - UTTB 4

3044814

<https://www.phoenixcontact.com/de/produkte/3044814>

## Marker pen

Marker pen - X-PEN 0,35 - 0811228

<https://www.phoenixcontact.com/de/produkte/0811228>



Marker pen without ink cartridge, for manual labeling of markers, labeling extremely wipe-proof, line thickness 0.35 mm

---

## DIN rail, unperforated

DIN rail, unperforated - NS 35/ 7,5 AL UNPERF 2000MM - 0801704

<https://www.phoenixcontact.com/de/produkte/0801704>



DIN rail, unperforated, acc. to EN 60715, material: Aluminum, uncoated, Standard profile, color: silver, Pack of 25 (50 m)

# Double-level terminal block - UTTB 4

3044814

<https://www.phoenixcontact.com/de/produkte/3044814>



## Test plugs

Test plugs - PS-6/2,3MM RD - 3038736

<https://www.phoenixcontact.com/de/produkte/3038736>



Test plugs, color: red

---

## DIN rail perforated

DIN rail perforated - NS 35/ 7,5 ZN PERF 2000MM - 1206421

<https://www.phoenixcontact.com/de/produkte/1206421>



DIN rail perforated, acc. to EN 60715, material: Steel, galvanized, Standard profile, color: silver, Pack of 25 (50 m)

# Double-level terminal block - UTTB 4

3044814

<https://www.phoenixcontact.com/de/produkte/3044814>



## Warning label

Warning label - WS UT 4 - 3047332

<https://www.phoenixcontact.com/de/produkte/3047332>

Warning sign for UT terminal blocks



---

## DIN rail, unperforated

DIN rail, unperforated - NS 35/ 7,5 ZN UNPERF 2000MM - 1206434

<https://www.phoenixcontact.com/de/produkte/1206434>



DIN rail, unperforated, acc. to EN 60715, material: Steel, galvanized, Standard profile, color: silver, Pack of 25 (50 m)

# Double-level terminal block - UTTB 4

3044814

<https://www.phoenixcontact.com/de/produkte/3044814>

## DIN rail, unperforated

DIN rail, unperforated - NS 35/ 7,5 CU UNPERF 2000MM-VPE 10 - 0801762

<https://www.phoenixcontact.com/de/produkte/0801762>



DIN rail, unperforated, acc. to EN 60715, material: Copper, uncoated, Standard profile, color: copper-colored, Pack of 10 (20 m)

---

## End cap

End cap - NS 35/ 7,5 CAP - 1206560

<https://www.phoenixcontact.com/de/produkte/1206560>

DIN rail end piece, for DIN rail NS 35/7.5



# Double-level terminal block - UTTB 4

3044814

<https://www.phoenixcontact.com/de/produkte/3044814>

## DIN rail perforated

DIN rail perforated - NS 35/15 PERF 2000MM - 1201730

<https://www.phoenixcontact.com/de/produkte/1201730>



DIN rail perforated, similar to EN 60715, material: Steel, galvanized, passivated with a thick layer, Standard profile, color: silver, Pack of 25 (50 m)

---

## DIN rail, unperforated

DIN rail, unperforated - NS 35/15 UNPERF 2000MM - 1201714

<https://www.phoenixcontact.com/de/produkte/1201714>



DIN rail, unperforated, similar to EN 60715, material: Steel, galvanized, passivated with a thick layer, Standard profile, color: silver, Pack of 25 (50 m)

# Double-level terminal block - UTTB 4

3044814

<https://www.phoenixcontact.com/de/produkte/3044814>

## DIN rail perforated

DIN rail perforated - NS 35/15 WH PERF 2000MM - 0806602

<https://www.phoenixcontact.com/de/produkte/0806602>



DIN rail perforated, similar to EN 60715, material: Steel, Galvanized, white passivated, Standard profile, color: white, Pack of 25 (50 m)

---

## DIN rail, unperforated

DIN rail, unperforated - NS 35/15 WH UNPERF 2000MM-VPE 10 - 1204135

<https://www.phoenixcontact.com/de/produkte/1204135>



DIN rail, unperforated, similar to EN 60715, material: Steel, Galvanized, white passivated, Standard profile, color: silver, Pack of 10 (20 m)



# Double-level terminal block - UTTB 4

3044814

<https://www.phoenixcontact.com/de/produkte/3044814>

## DIN rail, unperforated

DIN rail, unperforated - NS 35/15 AL UNPERF 2000MM - 1201756

<https://www.phoenixcontact.com/de/produkte/1201756>



DIN rail, unperforated, similar to EN 60715, material: Aluminum, uncoated, Standard profile, color: silver

---

## DIN rail perforated

DIN rail perforated - NS 35/15 ZN PERF 2000MM - 1206599

<https://www.phoenixcontact.com/de/produkte/1206599>



DIN rail perforated, similar to EN 60715, material: Steel, galvanized, Standard profile, color: silver, Pack of 25 (50 m)

# Double-level terminal block - UTTB 4

3044814

<https://www.phoenixcontact.com/de/produkte/3044814>

## DIN rail, unperforated

DIN rail, unperforated - NS 35/15 ZN UNPERF 2000MM - 1206586

<https://www.phoenixcontact.com/de/produkte/1206586>



DIN rail, unperforated, similar to EN 60715, material: Steel, galvanized, Standard profile, color: silver, Pack of 25 (50 m)

---

## DIN rail, unperforated

DIN rail, unperforated - NS 35/15 CU UNPERF 2000MM-VPE 10 - 1201895

<https://www.phoenixcontact.com/de/produkte/1201895>



DIN rail, unperforated, similar to EN 60715, material: Copper, uncoated, Standard profile, color: copper-colored, Pack of 10 (20 m)

# Double-level terminal block - UTTB 4

3044814

<https://www.phoenixcontact.com/de/produkte/3044814>



## End cap

End cap - NS 35/15 CAP - 1206573

<https://www.phoenixcontact.com/de/produkte/1206573>

DIN rail end piece, for DIN rail NS 35/15



---

## DIN rail, unperforated

DIN rail, unperforated - NS 35/15-2,3 UNPERF 2000MM-VPE 10 - 1201798

<https://www.phoenixcontact.com/de/produkte/1201798>



DIN rail, unperforated, acc. to EN 60715, material: Steel, galvanized, passivated with a thick layer, Standard profile 2.3 mm, color: silver, Pack of 10 (20 m)

# Double-level terminal block - UTTB 4

3044814

<https://www.phoenixcontact.com/de/produkte/3044814>

## Zack marker strip

Zack marker strip - ZB 6:UNBEDRUCKT - 1051003

<https://www.phoenixcontact.com/de/produkte/1051003>



Zack marker strip, Strip, white, unlabeled, can be labeled with: PLOTMARK, CMS-P1-PLOTTER, mounting type: snapped, for terminal block width: 6.2 mm, lettering field size: 6.15 x 10.5 mm, Number of individual labels: 10

---

## Zack marker strip

Zack marker strip - ZB 6 CUS - 0824992

<https://www.phoenixcontact.com/de/produkte/0824992>



Zack marker strip, can be ordered: Strip, white, labeled according to customer specifications, mounting type: snap into tall marker groove, for terminal block width: 6.2 mm, lettering field size: 6.15 x 10.5 mm, Number of individual labels: 10

# Double-level terminal block - UTTB 4

3044814

<https://www.phoenixcontact.com/de/produkte/3044814>

## Zack marker strip

Zack marker strip - ZB 6,LGS:FORTL.ZAHLEN - 1051016

<https://www.phoenixcontact.com/de/produkte/1051016>



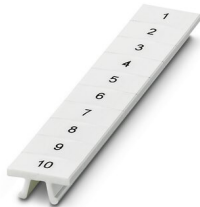
Zack marker strip, Strip, white, labeled, can be labeled with: CMS-P1-PLOTTER, printed horizontally: consecutive numbers 1 ... 10, 11 ... 20, etc. up to 491 ... 500, mounting type: snapped, for terminal block width: 6.2 mm, lettering field size: 6. 15 x 10.5 mm, Number of individual labels: 10

---

## Zack marker strip

Zack marker strip - ZB 6,QR:FORTL.ZAHLEN - 1051029

<https://www.phoenixcontact.com/de/produkte/1051029>



Zack marker strip, Strip, white, labeled, can be labeled with: CMS-P1-PLOTTER, Printed vertically: consecutive numbers 1 ... 10, 11 ... 20, etc. up to 491 ... 500, mounting type: snapped, for terminal block width: 6.2 mm, lettering field size: 6. 15 x 10.5 mm, Number of individual labels: 10

# Double-level terminal block - UTTB 4

3044814

<https://www.phoenixcontact.com/de/produkte/3044814>

## Zack marker strip

Zack marker strip - ZB 6,LGS:GLEICHE ZAHLEN - 1051032

<https://www.phoenixcontact.com/de/produkte/1051032>



Zack marker strip, Strip, white, labeled, can be labeled with: CMS-P1-PLOTTER, printed horizontally: Identical numbers 1 or 2, etc. up to 100, mounting type: snapped, for terminal block width: 6.2 mm, lettering field size: 6.15 x 10.5 mm, Number of individual labels: 10

---

## Marker for terminal blocks

Marker for terminal blocks - ZB 6,LGS:L1-N,PE - 1051414

<https://www.phoenixcontact.com/de/produkte/1051414>



Marker for terminal blocks, Strip, white, labeled, can be labeled with: CMS-P1-PLOTTER, horizontal: L1, L2, L3, N, PE, L1, L2, L3, N, PE, mounting type: snapped, for terminal block width: 6.2 mm, lettering field size: 6.15 x 10.5 mm, Number of individual labels: 10

# Double-level terminal block - UTTB 4

3044814

<https://www.phoenixcontact.com/de/produkte/3044814>

## Marker for terminal blocks

Marker for terminal blocks - ZB 6,LGS:U-N - 1051430

<https://www.phoenixcontact.com/de/produkte/1051430>



Marker for terminal blocks, Strip, white, labeled, can be labeled with: CMS-P1-PLOTTER, printed horizontally: U, V, W, N, GND, U, V, W, N, GND, mounting type: snapped, for terminal block width: 6.2 mm, lettering field size: 6.15 x 10.5 mm, Number of individual labels: 10

---

## Marker for terminal blocks

Marker for terminal blocks - UC-TM 6 - 0818085

<https://www.phoenixcontact.com/de/produkte/0818085>



Marker for terminal blocks, Sheet, white, unlabeled, can be labeled with: BLUEMARK ID COLOR, BLUEMARK ID, BLUEMARK CLED, PLOTMARK, CMS-P1-PLOTTER, mounting type: snapped, for terminal block width: 6.2 mm, lettering field size: 5.6 x 10.5 mm, Number of individual labels: 80

# Double-level terminal block - UTTB 4

3044814

<https://www.phoenixcontact.com/de/produkte/3044814>

## Marker for terminal blocks

Marker for terminal blocks - UC-TM 6 CUS - 0824589

<https://www.phoenixcontact.com/de/produkte/0824589>



Marker for terminal blocks, can be ordered: by sheet, white, labeled according to customer specifications, mounting type: snap into tall marker groove, for terminal block width: 6.2 mm, lettering field size: 5.6 x 10.5 mm, Number of individual labels: 80

---

## Marker for terminal blocks

Marker for terminal blocks - UCT-TM 6 - 0828736

<https://www.phoenixcontact.com/de/produkte/0828736>



Marker for terminal blocks, Sheet, white, unlabeled, can be labeled with: TOPMARK NEO, TOPMARK LASER, BLUEMARK ID COLOR, BLUEMARK ID, BLUEMARK CLED, THERMOMARK PRIME, THERMOMARK CARD 2.0, THERMOMARK CARD, mounting type: snapped, for terminal block width: 6.2 mm, lettering field size: 5.6 x 10.5 mm, Number of individual labels: 60



# Double-level terminal block - UTTB 4

3044814

<https://www.phoenixcontact.com/de/produkte/3044814>

## Marker for terminal blocks

Marker for terminal blocks - UCT-TM 6 CUS - 0829602

<https://www.phoenixcontact.com/de/produkte/0829602>



Marker for terminal blocks, can be ordered: by sheet, white, labeled according to customer specifications, mounting type: snap into tall marker groove, for terminal block width: 6.2 mm, lettering field size: 5.6 x 10.5 mm, Number of individual labels: 60

---

## Test plugs

Test plugs - MPS-MT - 0201744

<https://www.phoenixcontact.com/de/produkte/0201744>



Test plugs, with solder connection up to 1 mm<sup>2</sup> conductor cross section, color: gray

# Double-level terminal block - UTTB 4

3044814

<https://www.phoenixcontact.com/de/produkte/3044814>



## Insulating sleeve

Insulating sleeve - MPS-IH WH - 0201663

<https://www.phoenixcontact.com/de/produkte/0201663>

Insulating sleeve, color: white



---

## Insulating sleeve

Insulating sleeve - MPS-IH RD - 0201676

<https://www.phoenixcontact.com/de/produkte/0201676>

Insulating sleeve, color: red



# Double-level terminal block - UTTB 4

3044814

<https://www.phoenixcontact.com/de/produkte/3044814>

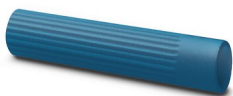


## Insulating sleeve

Insulating sleeve - MPS-IH BU - 0201689

<https://www.phoenixcontact.com/de/produkte/0201689>

Insulating sleeve, color: blue



---

## Insulating sleeve

Insulating sleeve - MPS-IH YE - 0201692

<https://www.phoenixcontact.com/de/produkte/0201692>

Insulating sleeve, color: yellow



# Double-level terminal block - UTTB 4

3044814

<https://www.phoenixcontact.com/de/produkte/3044814>



## Insulating sleeve

Insulating sleeve - MPS-IH GN - 0201702

<https://www.phoenixcontact.com/de/produkte/0201702>

Insulating sleeve, color: green



---

## Insulating sleeve

Insulating sleeve - MPS-IH GY - 0201728

<https://www.phoenixcontact.com/de/produkte/0201728>

Insulating sleeve, color: gray



# Double-level terminal block - UTTB 4

3044814

<https://www.phoenixcontact.com/de/produkte/3044814>



## Insulating sleeve

Insulating sleeve - MPS-IH BK - 0201731

<https://www.phoenixcontact.com/de/produkte/0201731>

Insulating sleeve, color: black



---

## Test adapter

Test adapter - PAI-4-FIX-5/6 BU - 3035975

<https://www.phoenixcontact.com/de/produkte/3035975>

4 mm test adapter, for terminal blocks with 5.2 mm and 6.2 mm pitch



# Double-level terminal block - UTTB 4

3044814

<https://www.phoenixcontact.com/de/produkte/3044814>

## Test adapter

Test adapter - PAI-4-FIX-5/6 OG - 3035974

<https://www.phoenixcontact.com/de/produkte/3035974>



4 mm test adapter, for terminal blocks with 5.2 mm and 6.2 mm pitch

---

## Test adapter

Test adapter - PAI-4-FIX-5/6 YE - 3035977

<https://www.phoenixcontact.com/de/produkte/3035977>



4 mm test adapter, for terminal blocks with 5.2 mm and 6.2 mm pitch

# Double-level terminal block - UTTB 4

3044814

<https://www.phoenixcontact.com/de/produkte/3044814>

## Test adapter

Test adapter - PAI-4-FIX-5/6 RD - 3035976

<https://www.phoenixcontact.com/de/produkte/3035976>



4 mm test adapter, for terminal blocks with 5.2 mm and 6.2 mm pitch

---

## Test adapter

Test adapter - PAI-4-FIX-5/6 GN - 3035978

<https://www.phoenixcontact.com/de/produkte/3035978>



4 mm test adapter, for terminal blocks with 5.2 mm and 6.2 mm pitch

# Double-level terminal block - UTTB 4

3044814

<https://www.phoenixcontact.com/de/produkte/3044814>

## Test adapter

Test adapter - PAI-4-FIX-5/6 BK - 3035980

<https://www.phoenixcontact.com/de/produkte/3035980>

4 mm test adapter, for terminal blocks with 5.2 mm and 6.2 mm pitch



---

## Test adapter

Test adapter - PAI-4-FIX-5/6 GY - 3035982

<https://www.phoenixcontact.com/de/produkte/3035982>

4 mm test adapter, for terminal blocks with 5.2 mm and 6.2 mm pitch





# Double-level terminal block - UTTB 4

3044814

<https://www.phoenixcontact.com/de/produkte/3044814>

## Test adapter

Test adapter - PAI-4-FIX-5/6 VT - 3035979

<https://www.phoenixcontact.com/de/produkte/3035979>

4 mm test adapter, for terminal blocks with 5.2 mm and 6.2 mm pitch



---

## Test adapter

Test adapter - PAI-4-FIX-5/6 BN - 3035981

<https://www.phoenixcontact.com/de/produkte/3035981>

4 mm test adapter, for terminal blocks with 5.2 mm and 6.2 mm pitch



# Double-level terminal block - UTTB 4

3044814

<https://www.phoenixcontact.com/de/produkte/3044814>

## Test adapter

Test adapter - PAI-4-FIX-5/6 WH - 3035983

<https://www.phoenixcontact.com/de/produkte/3035983>

4 mm test adapter, for terminal blocks with 5.2 mm and 6.2 mm pitch



---

## Test plugs

Test plugs - PS-6 - 3030996

<https://www.phoenixcontact.com/de/produkte/3030996>

Test plugs, Modular test plug, color: red



# Double-level terminal block - UTTB 4

3044814

<https://www.phoenixcontact.com/de/produkte/3044814>

## End clamp

End clamp - CLIPFIX 35 - 3022218

<https://www.phoenixcontact.com/de/produkte/3022218>



Quick mounting end clamp for NS 35/7,5 DIN rail or NS 35/15 DIN rail, with marking option, width: 9.5 mm, color: gray

---

## End clamp

End clamp - CLIPFIX 35-5 - 3022276

<https://www.phoenixcontact.com/de/produkte/3022276>



Quick mounting end clamp for NS 35/7,5 DIN rail or NS 35/15 DIN rail, with marking option, with parking option for FBS...5, FBS...6, KSS 5, KSS 6, width: 5.15 mm, color: gray

# Double-level terminal block - UTTB 4

3044814

<https://www.phoenixcontact.com/de/produkte/3044814>

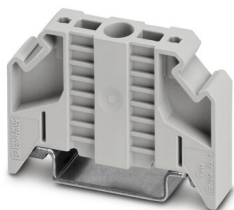


## End clamp

End clamp - E/NS 35 N - 0800886

<https://www.phoenixcontact.com/de/produkte/0800886>

End clamp, width: 9.5 mm, color: gray



---

Phoenix Contact 2022 © - all rights reserved

<https://www.phoenixcontact.com>

PHOENIX CONTACT Deutschland GmbH

Flachsmarktstraße 8

D-32825 Blomberg

+49 52 35/3-1 20 00

[info@phoenixcontact.de](mailto:info@phoenixcontact.de)