

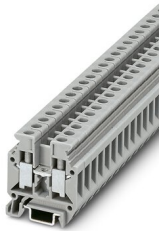
# Mini feed-through terminal block - MBK 5/E-Z

1402940

<https://www.phoenixcontact.com/de/produkte/1402940>

Please be informed that the data shown in this PDF document is generated from our Online Catalog. Please find the complete data in the user documentation. Our General Terms of Use for Downloads are valid.

---



Mini feed-through terminal block, nom. voltage: 500 V, nominal current: 32 A, connection method: Screw connection, 1 level, Rated cross section: 4 mm<sup>2</sup>, cross section: 0.2 mm<sup>2</sup> - 6 mm<sup>2</sup>, mounting type: NS 15, color: gray

---

## Your advantages

- Separating disks, partition plates, and test sockets complete the range of accessories
- Clear arrangement thanks to marking of all terminal points
- Space saving thanks to compact design and mounting option on a 15 mm DIN rail
- Easy potential distribution thanks to standardized plug-in bridges

# Mini feed-through terminal block - MBK 5/E-Z



1402940

<https://www.phoenixcontact.com/de/produkte/1402940>

## Commercial Data

Item number	1402940
Packing unit	50 pc
Minimum order quantity	1 pc
Sales Key	A1 - Reihenklennen
Product Key	BE1261
Catalog Page	Page 517 (CL1-2011)
GTIN	4017918116941
Weight per Piece (including packing)	6,12 g
Weight per Piece (excluding packing)	6,12 g
Customs tariff number	85369010
Country of origin	CN

# Mini feed-through terminal block - MBK 5/E-Z



1402940

<https://www.phoenixcontact.com/de/produkte/1402940>

## Technical Data

### Product properties

Product type	Miniature terminal block
Number of connections	2
Number of rows	1
Potentials	1

### Insulation characteristics

Overvoltage category	III
Degree of pollution	3

### Electrical properties

Rated surge voltage	6 kV
Maximum power dissipation for nominal condition	1.02 W

### Connection data

Number of connections per level	2
Nominal cross section	4 mm <sup>2</sup>

#### 1 level

Screw thread	M3
Tightening torque	0.5 ... 0.6 Nm
Stripping length	8 mm
Internal cylindrical gage	A4
Conductor cross section solid	0.2 mm <sup>2</sup> ... 6 mm <sup>2</sup>
Cross section AWG	24 ... 10
Conductor cross section flexible	0.2 mm <sup>2</sup> ... 4 mm <sup>2</sup>
Conductor cross section, flexible [AWG]	24 ... 12
Flexible conductor cross section flexible (ferrule, w/o plastic sleeve)	0.25 mm <sup>2</sup> ... 4 mm <sup>2</sup>
Flexible conductor cross section (ferrule with plastic sleeve)	0.25 mm <sup>2</sup> ... 2.5 mm <sup>2</sup>
Cross-section with insertion bridge, rigid	4 mm <sup>2</sup>
Cross-section with insertion bridge, flexible	4 mm <sup>2</sup>
2 conductors with same cross section, solid	0.2 mm <sup>2</sup> ... 1.5 mm <sup>2</sup>
2 conductors with same cross section, flexible	0.2 mm <sup>2</sup> ... 1.5 mm <sup>2</sup>
2 conductors with same cross section, flexible, with ferrule without plastic sleeve	0.25 mm <sup>2</sup> ... 1.5 mm <sup>2</sup>
2 conductors with the same cross section, flexible, with TWIN ferrule with plastic sleeve	0.5 mm <sup>2</sup> ... 2.5 mm <sup>2</sup>
Nominal current	32 A
Maximum load current	41 A (with 6 mm <sup>2</sup> conductor cross section)
Nominal voltage	500 V
Nominal cross section	4 mm <sup>2</sup>

# Mini feed-through terminal block - MBK 5/E-Z



1402940

<https://www.phoenixcontact.com/de/produkte/1402940>

## Dimensions

Width	6.2 mm
End cover width	1 mm
Height NS 15	32 mm
Height	1.26 "
Length	28 mm

## Material specifications

Color	gray
Flammability rating according to UL 94	V0
Insulating material group	I
Insulating material	PA
Static insulating material application in cold	-40 °C
Temperature index of insulation material (DIN EN 60216-1 (VDE 0304-21))	125 °C
Relative insulation material temperature index (Elec., UL 746 B)	125 °C

## Electrical tests

### Surge voltage test

Test voltage setpoint	7.3 kV
Result	Test passed

### Temperature-rise test

Requirement temperature-rise test	Increase in temperature $\leq$ 45 K
Result	Test passed
Short-time withstand current 4 mm <sup>2</sup>	0.48 kA
Short-time withstand current 6 mm <sup>2</sup>	0.72 kA
Result	Test passed

### Power-frequency withstand voltage

Test voltage setpoint	1.89 kV
Result	Test passed

## Mechanical properties

### Mechanical data

Open side panel	Yes
-----------------	-----

## Mechanical tests

### Mechanical strength

Result	Test passed
--------	-------------

### Attachment on the carrier

DIN rail/fixing support	NS 15
Test force setpoint	1 N

# Mini feed-through terminal block - MBK 5/E-Z



1402940

<https://www.phoenixcontact.com/de/produkte/1402940>

Result	Test passed
Test for conductor damage and slackening	
Rotation speed	10 rpm
Revolutions	135
Conductor cross section/weight	0.2 mm <sup>2</sup> / 0.2 kg
	4 mm <sup>2</sup> / 0.9 kg
	6 mm <sup>2</sup> / 1.4 kg
Result	Test passed

## Environmental and real-life conditions

### Needle-flame test

Time of exposure	30 s
Result	Test passed

### Ambient conditions

Ambient temperature (operation)	-60 °C ... 105 °C (max. short-term operating temperature RTI Elec.)
Ambient temperature (storage/transport)	-25 °C ... 60 °C (for a short time, not exceeding 24 h, -60 °C to +70 °C)
Ambient temperature (assembly)	-5 °C ... 70 °C
Ambient temperature (actuation)	-5 °C ... 70 °C
Permissible humidity (storage/transport)	30 % ... 70 %

## Standards and regulations

Connection in acc. with standard	IEC 60947-7-1
----------------------------------	---------------

## Mounting

Mounting type	NS 15
---------------	-------

# Mini feed-through terminal block - MBK 5/E-Z

1402940

<https://www.phoenixcontact.com/de/produkte/1402940>



## Drawings

### Circuit diagram




# Mini feed-through terminal block - MBK 5/E-Z





1402940

<https://www.phoenixcontact.com/de/produkte/1402940>

## Approvals

 <b>CSA</b> Approval ID: 13631				
	Nominal Voltage $U_N$	Nominal Current $I_N$	Cross Section AWG	Cross Section $mm^2$
Use group B	300 V	30 A	26 - 10	-
Use group C	300 V	30 A	26 - 10	-

 <b>EAC</b> Approval ID: RU C-DE.BL08.B.00534				
---	--	--	--	--

 <b>cULus Recognized</b> Approval ID: E60425				
	Nominal Voltage $U_N$	Nominal Current $I_N$	Cross Section AWG	Cross Section $mm^2$
Use group B	300 V	30 A	26 - 10	-
Use group C	300 V	30 A	26 - 10	-
Use group F	500 V	30 A	26 - 10	-
Use group D	600 V	5 A	26 - 10	-

# Mini feed-through terminal block - MBK 5/E-Z



1402940

<https://www.phoenixcontact.com/de/produkte/1402940>

## Classifications

### ECLASS

ECLASS-9.0	27141120
ECLASS-10.0.1	27141120
ECLASS-11.0	27141120

### ETIM

ETIM 8.0	EC000897
----------	----------

### UNSPSC

UNSPSC 21.0	39121400
-------------	----------



# Mini feed-through terminal block - MBK 5/E-Z



1402940

<https://www.phoenixcontact.com/de/produkte/1402940>

## Environmental Product Compliance

REACH SVHC	Lead 7439-92-1
China RoHS	Environmentally Friendly Use Period = 50 years
	For information on hazardous substances, refer to the manufacturer's declaration available under "Downloads"

# Mini feed-through terminal block - MBK 5/E-Z

1402940

<https://www.phoenixcontact.com/de/produkte/1402940>

## Accessories

 Note: Applying some accessories below might limit this product.


### Fixed bridge

Fixed bridge - FBI 10- 6 - 0203250

<https://www.phoenixcontact.com/de/produkte/0203250>



Fixed bridge, pitch: 6.2 mm, color: silver

 Max. current carrying capacity: 41 A

---

### Fixed bridge

Fixed bridge - FBI 20- 6 - 0201867

<https://www.phoenixcontact.com/de/produkte/0201867>



Fixed bridge, pitch: 6.2 mm, color: silver

# Mini feed-through terminal block - MBK 5/E-Z

1402940

<https://www.phoenixcontact.com/de/produkte/1402940>

## Fixed bridge

Fixed bridge - FBI 100- 6 - 0201650

<https://www.phoenixcontact.com/de/produkte/0201650>



Fixed bridge, pitch: 6.2 mm, color: silver

---

## Insertion bridge

Insertion bridge - EB 2- 6 - 0201155

<https://www.phoenixcontact.com/de/produkte/0201155>



Insertion bridge, pitch: 6.2 mm, color: gray

 Max. current carrying capacity: 32 A

# Mini feed-through terminal block - MBK 5/E-Z

1402940

<https://www.phoenixcontact.com/de/produkte/1402940>



## Insertion bridge

Insertion bridge - EB 3- 6 - 0201142

<https://www.phoenixcontact.com/de/produkte/0201142>

Insertion bridge, pitch: 6.2 mm, color: gray



 Max. current carrying capacity: 32 A

---

## Insertion bridge

Insertion bridge - EB 10- 6 - 0201139

<https://www.phoenixcontact.com/de/produkte/0201139>

Insertion bridge, pitch: 6.2 mm, color: gray



 Max. current carrying capacity: 32 A

# Mini feed-through terminal block - MBK 5/E-Z

1402940

<https://www.phoenixcontact.com/de/produkte/1402940>

## Switching jumper

Switching jumper - SBRN 2-7 - 1413230

<https://www.phoenixcontact.com/de/produkte/1413230>



Switching jumper, pitch: 7 mm, color: silver

 Max. current carrying capacity: 24 A

---

## End cover

End cover - D-MBK/E - 1415021

<https://www.phoenixcontact.com/de/produkte/1415021>



End cover, length: 28 mm, width: 1 mm, height: 26.2 mm, color: gray

# Mini feed-through terminal block - MBK 5/E-Z

1402940

<https://www.phoenixcontact.com/de/produkte/1402940>

## DIN rail, unperforated

DIN rail, unperforated - NS 15 UNPERF 2000MM VPE 10 - 1401695

<https://www.phoenixcontact.com/de/produkte/1401695>



DIN rail, unperforated, acc. to EN 60715, material: Steel, galvanized, passivated with a thick layer, Standard profile, color: silver, Pack of 10 (20 m)

---

## Separating plate

Separating plate - TS-KK 3 - 2770215

<https://www.phoenixcontact.com/de/produkte/2770215>



Separating plate, length: 14 mm, width: 0.5 mm, height: 16 mm, color: gray

# Mini feed-through terminal block - MBK 5/E-Z

1402940

<https://www.phoenixcontact.com/de/produkte/1402940>

## DIN rail perforated

DIN rail perforated - NS 15 PERF 2000MM VPE 10 - 1401682

<https://www.phoenixcontact.com/de/produkte/1401682>



DIN rail perforated, acc. to EN 60715, material: Steel, galvanized, passivated with a thick layer, Standard profile, color: silver, Pack of 10 (20 m)

---

## Partition plate

Partition plate - ATP-MBK - 1413227

<https://www.phoenixcontact.com/de/produkte/1413227>



Partition plate, length: 42.5 mm, width: 2.5 mm, height: 30.5 mm, color: gray

# Mini feed-through terminal block - MBK 5/E-Z

1402940

<https://www.phoenixcontact.com/de/produkte/1402940>

## DIN rail perforated

DIN rail perforated - NS 15 AL PERF 2000MM VPE 10 - 1401763

<https://www.phoenixcontact.com/de/produkte/1401763>



DIN rail perforated, acc. to EN 60715, material: Aluminum, uncoated, Standard profile, color: silver, Pack of 10 (20 m)

---

## Marker card

Marker card - SBS 6:UNBEDRUCKT - 1007222

<https://www.phoenixcontact.com/de/produkte/1007222>



Marker card, Card, white, unlabeled, can be labeled with: Marker pen, mounting type: snapped, snap into flat marker groove, for terminal block width: 6 mm, lettering field size: 6 x 6.1 mm, Number of individual labels: 250



# Mini feed-through terminal block - MBK 5/E-Z

1402940

<https://www.phoenixcontact.com/de/produkte/1402940>

## DIN rail perforated

DIN rail perforated - NS 15 WH PERF 2000MM-VPE 10 - 1204096

<https://www.phoenixcontact.com/de/produkte/1204096>



DIN rail perforated, acc. to EN 60715, material: Steel, Galvanized, white passivated, Standard profile, color: silver, Pack of 10 (20 m)

---

## Screwdriver

Screwdriver - SZS 0,6X3,5 - 1205053

<https://www.phoenixcontact.com/de/produkte/1205053>



Actuation tool, for ST terminal blocks, insulated, also suitable for use as a bladed screwdriver, size: 0.6 x 3.5 x 100 mm, 2-component grip, with non-slip grip

# Mini feed-through terminal block - MBK 5/E-Z

1402940

<https://www.phoenixcontact.com/de/produkte/1402940>

## Zack marker strip

Zack marker strip - ZB 6:UNBEDRUCKT - 1051003

<https://www.phoenixcontact.com/de/produkte/1051003>



Zack marker strip, Strip, white, unlabeled, can be labeled with: PLOTMARK, CMS-P1-PLOTTER, mounting type: snapped, for terminal block width: 6.2 mm, lettering field size: 6.15 x 10.5 mm, Number of individual labels: 10

---

## Zack marker strip

Zack marker strip - ZB 6 CUS - 0824992

<https://www.phoenixcontact.com/de/produkte/0824992>



Zack marker strip, can be ordered: Strip, white, labeled according to customer specifications, mounting type: snap into tall marker groove, for terminal block width: 6.2 mm, lettering field size: 6.15 x 10.5 mm, Number of individual labels: 10

# Mini feed-through terminal block - MBK 5/E-Z

1402940

<https://www.phoenixcontact.com/de/produkte/1402940>

## Zack marker strip

Zack marker strip - ZB 6,LGS:FORTL.ZAHLEN - 1051016

<https://www.phoenixcontact.com/de/produkte/1051016>



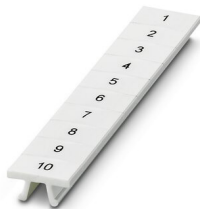
Zack marker strip, Strip, white, labeled, can be labeled with: CMS-P1-PLOTTER, printed horizontally: consecutive numbers 1 ... 10, 11 ... 20, etc. up to 491 ... 500, mounting type: snapped, for terminal block width: 6.2 mm, lettering field size: 6. 15 x 10.5 mm, Number of individual labels: 10

---

## Zack marker strip

Zack marker strip - ZB 6,QR:FORTL.ZAHLEN - 1051029

<https://www.phoenixcontact.com/de/produkte/1051029>



Zack marker strip, Strip, white, labeled, can be labeled with: CMS-P1-PLOTTER, Printed vertically: consecutive numbers 1 ... 10, 11 ... 20, etc. up to 491 ... 500, mounting type: snapped, for terminal block width: 6.2 mm, lettering field size: 6. 15 x 10.5 mm, Number of individual labels: 10

# Mini feed-through terminal block - MBK 5/E-Z

1402940

<https://www.phoenixcontact.com/de/produkte/1402940>

## Zack marker strip

Zack marker strip - ZB 6,LGS:GLEICHE ZAHLEN - 1051032

<https://www.phoenixcontact.com/de/produkte/1051032>



Zack marker strip, Strip, white, labeled, can be labeled with: CMS-P1-PLOTTER, printed horizontally: Identical numbers 1 or 2, etc. up to 100, mounting type: snapped, for terminal block width: 6.2 mm, lettering field size: 6.15 x 10.5 mm, Number of individual labels: 10

---

## Marker for terminal blocks

Marker for terminal blocks - ZB 6,LGS:L1-N,PE - 1051414

<https://www.phoenixcontact.com/de/produkte/1051414>



Marker for terminal blocks, Strip, white, labeled, can be labeled with: CMS-P1-PLOTTER, horizontal: L1, L2, L3, N, PE, L1, L2, L3, N, PE, mounting type: snapped, for terminal block width: 6.2 mm, lettering field size: 6.15 x 10.5 mm, Number of individual labels: 10

# Mini feed-through terminal block - MBK 5/E-Z

1402940

<https://www.phoenixcontact.com/de/produkte/1402940>

## Marker for terminal blocks

Marker for terminal blocks - ZB 6,LGS:U-N - 1051430

<https://www.phoenixcontact.com/de/produkte/1051430>



Marker for terminal blocks, Strip, white, labeled, can be labeled with: CMS-P1-PLOTTER, printed horizontally: U, V, W, N, GND, U, V, W, N, GND, mounting type: snapped, for terminal block width: 6.2 mm, lettering field size: 6.15 x 10.5 mm, Number of individual labels: 10

---

## Marker for terminal blocks

Marker for terminal blocks - UC-TM 6 - 0818085

<https://www.phoenixcontact.com/de/produkte/0818085>



Marker for terminal blocks, Sheet, white, unlabeled, can be labeled with: BLUEMARK ID COLOR, BLUEMARK ID, BLUEMARK CLED, PLOTMARK, CMS-P1-PLOTTER, mounting type: snapped, for terminal block width: 6.2 mm, lettering field size: 5.6 x 10.5 mm, Number of individual labels: 80

# Mini feed-through terminal block - MBK 5/E-Z

1402940

<https://www.phoenixcontact.com/de/produkte/1402940>

## Marker for terminal blocks

Marker for terminal blocks - UC-TM 6 CUS - 0824589

<https://www.phoenixcontact.com/de/produkte/0824589>



Marker for terminal blocks, can be ordered: by sheet, white, labeled according to customer specifications, mounting type: snap into tall marker groove, for terminal block width: 6.2 mm, lettering field size: 5.6 x 10.5 mm, Number of individual labels: 80

---

## Marker for terminal blocks

Marker for terminal blocks - UCT-TM 6 - 0828736

<https://www.phoenixcontact.com/de/produkte/0828736>



Marker for terminal blocks, Sheet, white, unlabeled, can be labeled with: TOPMARK NEO, TOPMARK LASER, BLUEMARK ID COLOR, BLUEMARK ID, BLUEMARK CLED, THERMOMARK PRIME, THERMOMARK CARD 2.0, THERMOMARK CARD, mounting type: snapped, for terminal block width: 6.2 mm, lettering field size: 5.6 x 10.5 mm, Number of individual labels: 60

# Mini feed-through terminal block - MBK 5/E-Z

1402940

<https://www.phoenixcontact.com/de/produkte/1402940>

## Marker for terminal blocks

Marker for terminal blocks - UCT-TM 6 CUS - 0829602

<https://www.phoenixcontact.com/de/produkte/0829602>



Marker for terminal blocks, can be ordered: by sheet, white, labeled according to customer specifications, mounting type: snap into tall marker groove, for terminal block width: 6.2 mm, lettering field size: 5.6 x 10.5 mm, Number of individual labels: 60

## End clamp

End clamp - E/MBK - 1401637

<https://www.phoenixcontact.com/de/produkte/1401637>



End clamp, width: 6.2 mm, color: gray

# Mini feed-through terminal block - MBK 5/E-Z

1402940

<https://www.phoenixcontact.com/de/produkte/1402940>

## End clamp

End clamp - E/MK - 1421633

<https://www.phoenixcontact.com/de/produkte/1421633>

End clamp, width: 6.2 mm, color: gray



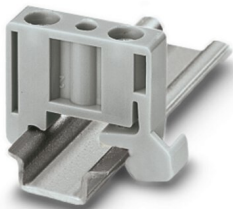
---

## End clamp

End clamp - E/MK 1 - 1421659

<https://www.phoenixcontact.com/de/produkte/1421659>

End clamp width: 6 mm, color: gray





# Mini feed-through terminal block - MBK 5/E-Z

1402940

<https://www.phoenixcontact.com/de/produkte/1402940>



## Female test connector

Female test connector - PSB 3/10/4 - 0601292

<https://www.phoenixcontact.com/de/produkte/0601292>



Female test connector, color: silver

---

Phoenix Contact 2022 © - all rights reserved

<https://www.phoenixcontact.com>

PHOENIX CONTACT Deutschland GmbH

Flachsmarktstraße 8

D-32825 Blomberg

+49 52 35/3-1 20 00

[info@phoenixcontact.de](mailto:info@phoenixcontact.de)