

Feed-through terminal block - UK 5 N YE

3003952

<https://www.phoenixcontact.com/de/produkte/3003952>

Please be informed that the data shown in this PDF document is generated from our Online Catalog. Please find the complete data in the user documentation. Our General Terms of Use for Downloads are valid.



Feed-through terminal block, nom. voltage: 800 V, nominal current: 32 A, connection method: Screw connection, Rated cross section: 4 mm², cross section: 0.2 mm² - 6 mm², mounting type: NS 35/7,5, NS 35/15, NS 32, color: yellow

Feed-through terminal block - UK 5 N YE



3003952

<https://www.phoenixcontact.com/de/produkte/3003952>

Commercial Data

Item number	3003952
Packing unit	50 pc
Minimum order quantity	1 pc
Sales Key	A1 - Reihenklemmen
Product Key	BE1211
GTIN	4017918282172
Weight per Piece (including packing)	8,539 g
Weight per Piece (excluding packing)	8,539 g
Customs tariff number	85369010
Country of origin	CN

3003952

<https://www.phoenixcontact.com/de/produkte/3003952>

Technical Data

Product properties

Product type	Feed-through terminal block
Number of connections	2
Number of rows	1
Potentials	1

Insulation characteristics

Overvoltage category	III
Degree of pollution	3

Electrical properties

Rated surge voltage	8 kV
Maximum power dissipation for nominal condition	1.02 W

Connection data

Number of connections per level	2
Nominal cross section	4 mm ²

Level 1 above 1 below 1

Screw thread	M3
Tightening torque	0.6 ... 0.8 Nm
Stripping length	8 mm
Internal cylindrical gage	A4
Conductor cross section solid	0.2 mm ² ... 6 mm ²
Cross section AWG	24 ... 10
Conductor cross section flexible	0.2 mm ² ... 4 mm ²
Conductor cross section, flexible [AWG]	24 ... 12
Flexible conductor cross section flexible (ferrule, w/o plastic sleeve)	0.25 mm ² ... 4 mm ²
Flexible conductor cross section (ferrule with plastic sleeve)	0.25 mm ² ... 2.5 mm ²
Cross-section with insertion bridge, rigid	4 mm ²
Cross-section with insertion bridge, flexible	4 mm ²
2 conductors with same cross section, solid	0.2 mm ² ... 1.5 mm ²
2 conductors with same cross section, flexible	0.2 mm ² ... 1.5 mm ²
2 conductors with same cross section, flexible, with ferrule without plastic sleeve	0.25 mm ² ... 1.5 mm ²
2 conductors with the same cross section, flexible, with TWIN ferrule with plastic sleeve	0.5 mm ² ... 2.5 mm ²
Nominal current	32 A
Maximum load current	41 A (with 6 mm ² conductor cross section)
Nominal voltage	800 V
Nominal cross section	4 mm ²

Feed-through terminal block - UK 5 N YE



3003952

<https://www.phoenixcontact.com/de/produkte/3003952>

Ex data

Rated data (ATEX/IECEX)

ATEX certificate	KEMA 98 ATEX 1651 U
IEC Ex certificate	IECEX KEM 06.0034 U
Identification	Ex eb IIC Gb
Operating temperature range	-60 °C ... 110 °C
Ex-certified accessories	3003020 D-UK 4/10
	3006027 D-UK 16
	3003224 ATP-UK
	1212587 SF-SL 0,6X3,5-100 S-VDE
	1201442 E/UK
Bridge data	27.5 A / 4 mm ²
	28.5 A / 4 mm ²
	28 A / 4 mm ²
	28 A / 4 mm ²
	26 A / 4 mm ²
Ex temperature increase	40 K (30 A / 4 mm ²)
Rated voltage	630 V (NS 35)
	500 V (NS 32)
for bridging with bridge	550 V (NS 32)
- At bridging between non-adjacent terminal blocks	176 V
Rated insulation voltage	630 V (NS 35)
	500 V (NS 32)

Ex level General

Rated current	27 A
Maximum load current	35 A
Contact resistance	0.37 mΩ

Ex connection data General

Torque range	0.6 Nm ... 0.8 Nm
Nominal cross section	4 mm ²
Rated cross section AWG	12
Connection capacity rigid	0.2 mm ² ... 6 mm ²
Connection capacity AWG	24 ... 10
Connection capacity flexible	0.2 mm ² ... 4 mm ²
Connection capacity AWG	24 ... 12
2 conductors with same cross section, solid	0.2 mm ² ... 1.5 mm ²
2 conductors with the same cross-section AWG rigid	24 ... 16
2 conductors with same cross section, stranded	0.2 mm ² ... 1.5 mm ²
2 conductors with the same cross-section AWG flexible	24 ... 16

Dimensions

Width	6.2 mm
-------	--------

Feed-through terminal block - UK 5 N YE



3003952

<https://www.phoenixcontact.com/de/produkte/3003952>

End cover width	1.8 mm
Height NS 35/15	54.5 mm
Height NS 35/7,5	47 mm
Height	1.85 "
Height NS 32	52 mm
Length	42.5 mm

Material specifications

Color	yellow
Flammability rating according to UL 94	V0
Insulating material group	I
Insulating material	PA
Static insulating material application in cold	-60 °C
Temperature index of insulation material (DIN EN 60216-1 (VDE 0304-21))	125 °C
Relative insulation material temperature index (Elec., UL 746 B)	130 °C
Fire protection for rail vehicles (DIN EN 45545-2) R22	HL 1 - HL 3
Fire protection for rail vehicles (DIN EN 45545-2) R23	HL 1 - HL 3
Fire protection for rail vehicles (DIN EN 45545-2) R24	HL 1 - HL 3
Fire protection for rail vehicles (DIN EN 45545-2) R26	HL 1 - HL 3
Calorimetric heat release NFPA 130 (ASTM E 1354)	27,5 MJ/kg
Surface flammability NFPA 130 (ASTM E 162)	passed
Specific optical density of smoke NFPA 130 (ASTM E 662)	passed
Smoke gas toxicity NFPA 130 (SMP 800C)	passed

Electrical tests

Surge voltage test

Test voltage setpoint	9.8 kV
Result	Test passed

Temperature-rise test

Requirement temperature-rise test	Increase in temperature \leq 45 K
Result	Test passed
Short-time withstand current 4 mm ²	0.48 kA
Result	Test passed

Power-frequency withstand voltage

Test voltage setpoint	2 kV
Result	Test passed

Mechanical properties

Mechanical data

Open side panel	Yes
-----------------	-----

Mechanical tests

Feed-through terminal block - UK 5 N YE



3003952

<https://www.phoenixcontact.com/de/produkte/3003952>

Mechanical strength

Result	Test passed
--------	-------------

Attachment on the carrier

DIN rail/fixing support	NS 32/NS 35
Test force setpoint	5 N
Result	Test passed

Test for conductor damage and slackening

Rotation speed	10 rpm
Revolutions	135
Conductor cross section/weight	0.2 mm ² / 0.2 kg
	4 mm ² / 0.9 kg
	6 mm ² / 1.4 kg
Result	Test passed

Environmental and real-life conditions

Needle-flame test

Time of exposure	30 s
Result	Test passed

Ambient conditions

Ambient temperature (operation)	-60 °C ... 105 °C (max. short-term operating temperature RTI Elec.)
Ambient temperature (storage/transport)	-25 °C ... 60 °C (for a short time, not exceeding 24 h, -60 °C to +70 °C)
Ambient temperature (assembly)	-5 °C ... 70 °C
Ambient temperature (actuation)	-5 °C ... 70 °C
Permissible humidity (storage/transport)	30 % ... 70 %

Standards and regulations

Connection in acc. with standard	IEC 60947-7-1
----------------------------------	---------------

Mounting

Mounting type	NS 35/7,5
	NS 35/15
	NS 32

Feed-through terminal block - UK 5 N YE

3003952

<https://www.phoenixcontact.com/de/produkte/3003952>



Drawings

Circuit diagram



Feed-through terminal block - UK 5 N YE



3003952

<https://www.phoenixcontact.com/de/produkte/3003952>

Approvals

DNV Approval ID: TAE00001CT				
	Nominal Voltage U_N	Nominal Current I_N	Cross Section AWG	Cross Section mm^2
			-	-

CSA Approval ID: 13631				
	Nominal Voltage U_N	Nominal Current I_N	Cross Section AWG	Cross Section mm^2
	600 V	30 A	28 - 10	-

IECEE CB Scheme Approval ID: NL-65062				
	Nominal Voltage U_N	Nominal Current I_N	Cross Section AWG	Cross Section mm^2
	800 V	32 A	-	- 4

EAC Approval ID: RU C-DE.BL08.B.00534				
---	--	--	--	--

cULus Recognized Approval ID: E60425				
	Nominal Voltage U_N	Nominal Current I_N	Cross Section AWG	Cross Section mm^2
Use group F	800 V	30 A	30 - 10	-

CCA Approval ID: NTR-NL 3069				
	Nominal Voltage U_N	Nominal Current I_N	Cross Section AWG	Cross Section mm^2
	800 V		-	- 4

KEMA-KEUR Approval ID: 71-113414				
	Nominal Voltage U_N	Nominal Current I_N	Cross Section AWG	Cross Section mm^2
	800 V		-	- 4

RS Approval ID: 17.00013.272				
--	--	--	--	--

Feed-through terminal block - UK 5 N YE



3003952

<https://www.phoenixcontact.com/de/produkte/3003952>



ATEX

Approval ID: KEMA98ATEX1651U



cUL Recognized

Approval ID: E192998

	Nominal Voltage U_N	Nominal Current I_N	Cross Section AWG	Cross Section mm^2
	600 V	30 A	30 - 10	-



EAC Ex

Approval ID: RU C-DE.HA91.B.00066



GL

Approval ID: 98876-96 HH

	Nominal Voltage U_N	Nominal Current I_N	Cross Section AWG	Cross Section mm^2
EEx e II part certificate	690 V	32.5 A	-	- 4



IECEX

Approval ID: IECEX KEM 06.0034U



UL Recognized

Approval ID: E192998

	Nominal Voltage U_N	Nominal Current I_N	Cross Section AWG	Cross Section mm^2
	600 V	30 A	30 - 10	-



CCC

Approval ID: 2020322313000623



NEPSI

Approval ID: GYJ20.1195U



DNV GL-EX

Approval ID: TAE00003K6

	Nominal Voltage U_N	Nominal Current I_N	Cross Section AWG	Cross Section mm^2
EEx e II part certificate	440 V	32 A	-	- 2.5

cULus Recognized

Feed-through terminal block - UK 5 N YE

3003952

<https://www.phoenixcontact.com/de/produkte/3003952>



Feed-through terminal block - UK 5 N YE



3003952

<https://www.phoenixcontact.com/de/produkte/3003952>

Classifications

ECLASS

ECLASS-9.0	27141120
ECLASS-10.0.1	27141120
ECLASS-11.0	27141120

ETIM

ETIM 8.0	EC000897
----------	----------

UNSPSC

UNSPSC 21.0	39121400
-------------	----------

Feed-through terminal block - UK 5 N YE



3003952

<https://www.phoenixcontact.com/de/produkte/3003952>

Environmental Product Compliance

REACH SVHC	Lead 7439-92-1
China RoHS	Environmentally Friendly Use Period = 50 years
	For information on hazardous substances, refer to the manufacturer's declaration available under "Downloads"

Feed-through terminal block - UK 5 N YE

3003952

<https://www.phoenixcontact.com/de/produkte/3003952>

Accessories

 Note: Applying some accessories below might limit this product.

Bridge bar isolator

Bridge bar isolator - IS-K 4 - 1302338

<https://www.phoenixcontact.com/de/produkte/1302338>



Bridge bar isolator, color: gray


Bridge

Bridge - ISSBI 10- 6 - 0301505

<https://www.phoenixcontact.com/de/produkte/0301505>



Bridge, pitch: 6 mm, color: silver

 Max. current carrying capacity: 30 A

Feed-through terminal block - UK 5 N YE

3003952

<https://www.phoenixcontact.com/de/produkte/3003952>




Bridge

Bridge - LB 10-6 BU - 0202280

<https://www.phoenixcontact.com/de/produkte/0202280>



Bridge, pitch: 6 mm, color: blue

 Max. current carrying capacity: 32 A

Bridge

Bridge - LB 10-6 GY - 0202358

<https://www.phoenixcontact.com/de/produkte/0202358>



Bridge, pitch: 6 mm, color: gray

 Max. current carrying capacity: 32 A

Feed-through terminal block - UK 5 N YE

3003952

<https://www.phoenixcontact.com/de/produkte/3003952>



Bridge

Bridge - LB 100-6 GY - 0202345

<https://www.phoenixcontact.com/de/produkte/0202345>



Bridge, pitch: 6 mm, color: gray

 Max. current carrying capacity: 32 A


Bridge

Bridge - LB 100-6 BU - 0202303

<https://www.phoenixcontact.com/de/produkte/0202303>



Bridge, color: blue

 Max. current carrying capacity: 32 A

Feed-through terminal block - UK 5 N YE

3003952

<https://www.phoenixcontact.com/de/produkte/3003952>

Chain bridge

Chain bridge - KB- 6-EX - 0201485

<https://www.phoenixcontact.com/de/produkte/0201485>



Chain bridge, color: silver

 Max. current carrying capacity: 32 A


Fixed bridge

Fixed bridge - FBI 2- 6 - 0203438

<https://www.phoenixcontact.com/de/produkte/0203438>



Fixed bridge, pitch: 6.2 mm, color: silver

 Max. current carrying capacity: 41 A

Feed-through terminal block - UK 5 N YE

3003952

<https://www.phoenixcontact.com/de/produkte/3003952>




Fixed bridge

Fixed bridge - FBI 10- 6 - 0203250

<https://www.phoenixcontact.com/de/produkte/0203250>

Fixed bridge, pitch: 6.2 mm, color: silver



 Max. current carrying capacity: 41 A


Fixed bridge

Fixed bridge - FB 3- 6-EX - 0201469

<https://www.phoenixcontact.com/de/produkte/0201469>

Fixed bridge, pitch: 6.2 mm, color: silver



 Max. current carrying capacity: 41 A

Feed-through terminal block - UK 5 N YE

3003952

<https://www.phoenixcontact.com/de/produkte/3003952>

Fixed bridge

Fixed bridge - FB 2- 6-EX - 0201456

<https://www.phoenixcontact.com/de/produkte/0201456>



Fixed bridge, pitch: 6.2 mm, color: silver

 Max. current carrying capacity: 41 A


Fixed bridge

Fixed bridge - FB 5- 6 - 0201029

<https://www.phoenixcontact.com/de/produkte/0201029>



Fixed bridge, pitch: 6.2 mm, color: silver

 Max. current carrying capacity: 41 A

Feed-through terminal block - UK 5 N YE

3003952

<https://www.phoenixcontact.com/de/produkte/3003952>



Fixed bridge

Fixed bridge - FBI 100- 6 - 0201650

<https://www.phoenixcontact.com/de/produkte/0201650>



Fixed bridge, pitch: 6.2 mm, color: silver

 Max. current carrying capacity: 41 A


Fixed bridge

Fixed bridge - FBI 20- 6 - 0201867

<https://www.phoenixcontact.com/de/produkte/0201867>



Fixed bridge, pitch: 6.2 mm, color: silver

 Max. current carrying capacity: 41 A

Feed-through terminal block - UK 5 N YE

3003952

<https://www.phoenixcontact.com/de/produkte/3003952>




Fixed bridge

Fixed bridge - FB 10- 6-EX - 0201281

<https://www.phoenixcontact.com/de/produkte/0201281>



Fixed bridge, pitch: 6.2 mm, color: silver

 Max. current carrying capacity: 41 A


Fixed bridge

Fixed bridge - FB 10- 6 - 0201184

<https://www.phoenixcontact.com/de/produkte/0201184>



Fixed bridge, pitch: 6.2 mm, color: silver

 Max. current carrying capacity: 41 A

Feed-through terminal block - UK 5 N YE

3003952

<https://www.phoenixcontact.com/de/produkte/3003952>



Insertion bridge

Insertion bridge - EB 2-6 - 0201155

<https://www.phoenixcontact.com/de/produkte/0201155>

Insertion bridge, pitch: 6.2 mm, color: gray



 Max. current carrying capacity: 32 A


Insertion bridge

Insertion bridge - EB 3-6 - 0201142

<https://www.phoenixcontact.com/de/produkte/0201142>

Insertion bridge, pitch: 6.2 mm, color: gray



 Max. current carrying capacity: 32 A

Feed-through terminal block - UK 5 N YE

3003952

<https://www.phoenixcontact.com/de/produkte/3003952>




Insertion bridge

Insertion bridge - EB 10- 6 - 0201139

<https://www.phoenixcontact.com/de/produkte/0201139>

Insertion bridge, pitch: 6.2 mm, color: gray



 Max. current carrying capacity: 32 A


Switching jumper

Switching jumper - USBRJ 2-7 - 2305538

<https://www.phoenixcontact.com/de/produkte/2305538>

Switching jumper, color: silver



 Max. current carrying capacity: 34 A

Feed-through terminal block - UK 5 N YE

3003952

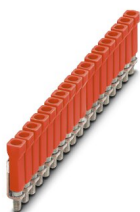
<https://www.phoenixcontact.com/de/produkte/3003952>




Bridge

Bridge - LB 100-6 RD - 0202316

<https://www.phoenixcontact.com/de/produkte/0202316>



Bridge, color: red

 Max. current carrying capacity: 32 A


Bridge

Bridge - LB 10-6 RD - 0202293

<https://www.phoenixcontact.com/de/produkte/0202293>



Bridge, pitch: 6 mm, color: red

 Max. current carrying capacity: 32 A

Feed-through terminal block - UK 5 N YE

3003952

<https://www.phoenixcontact.com/de/produkte/3003952>

End cover

End cover - D-UK 4/10 - 3003020

<https://www.phoenixcontact.com/de/produkte/3003020>

End cover, length: 42.5 mm, width: 1.8 mm, height: 35.9 mm, color: gray



DIN rail perforated

DIN rail perforated - NS 32 PERF 2000MM-VPE 10 - 1201002

<https://www.phoenixcontact.com/de/produkte/1201002>

DIN rail perforated, acc. to EN 60715, material: Steel, galvanized, passivated with a thick layer, G profile, color: silver, Pack of 10 (20 m)



Feed-through terminal block - UK 5 N YE

3003952

<https://www.phoenixcontact.com/de/produkte/3003952>

Warning label

Warning label - WS 3- 6 - 1004115

<https://www.phoenixcontact.com/de/produkte/1004115>

Warning plate, with 2 plastic screws, across 3 terminal blocks, pitch 6 mm



DIN rail, unperforated

DIN rail, unperforated - NS 32 UNPERF 2000MM-VPE 10 - 1201015

<https://www.phoenixcontact.com/de/produkte/1201015>

DIN rail, unperforated, acc. to EN 60715, material: Steel, galvanized, passivated with a thick layer, G profile, color: silver, Pack of 10 (20 m)



Feed-through terminal block - UK 5 N YE

3003952

<https://www.phoenixcontact.com/de/produkte/3003952>

Warning label

Warning label - WS 4- 6 - 1004209

<https://www.phoenixcontact.com/de/produkte/1004209>

Warning plate, with 2 plastic screws, across 4 terminal blocks, pitch 6 mm



DIN rail perforated

DIN rail perforated - NS 35/ 7,5 PERF 2000MM - 0801733

<https://www.phoenixcontact.com/de/produkte/0801733>



DIN rail perforated, acc. to EN 60715, material: Steel, galvanized, passivated with a thick layer, Standard profile, color: silver, Pack of 25 (50 m)

Feed-through terminal block - UK 5 N YE

3003952

<https://www.phoenixcontact.com/de/produkte/3003952>

Warning label

Warning label - WS 5- 6 - 1004403

<https://www.phoenixcontact.com/de/produkte/1004403>

Warning plate, with 2 plastic screws, across 5 terminal blocks, pitch 6 mm



DIN rail, unperforated

DIN rail, unperforated - NS 35/ 7,5 UNPERF 2000MM - 0801681

<https://www.phoenixcontact.com/de/produkte/0801681>



DIN rail, unperforated, acc. to EN 60715, material: Steel, galvanized, passivated with a thick layer, Standard profile, color: silver, Pack of 25 (50 m)

Feed-through terminal block - UK 5 N YE

3003952

<https://www.phoenixcontact.com/de/produkte/3003952>

Screw

Screw - ZSR - 2303608

<https://www.phoenixcontact.com/de/produkte/2303608>



Screw

DIN rail perforated

DIN rail perforated - NS 35/ 7,5 WH PERF 2000MM - 1204119

<https://www.phoenixcontact.com/de/produkte/1204119>



DIN rail perforated, acc. to EN 60715, material: Steel, Galvanized, white passivated, Standard profile, color: silver, Pack of 25 (50 m)

Feed-through terminal block - UK 5 N YE

3003952

<https://www.phoenixcontact.com/de/produkte/3003952>

Screw

Screw - ZSR-EX - 0200017

<https://www.phoenixcontact.com/de/produkte/0200017>

Screw



DIN rail, unperforated

DIN rail, unperforated - NS 35/ 7,5 WH UNPERF 2000MM-VPE 10 - 1204122

<https://www.phoenixcontact.com/de/produkte/1204122>



DIN rail, unperforated, acc. to EN 60715, material: Steel, Galvanized, white passivated, Standard profile, color: silver, Pack of 10 (20 m)

Feed-through terminal block - UK 5 N YE

3003952

<https://www.phoenixcontact.com/de/produkte/3003952>

Fixed bridge

Fixed bridge - FB-150 METER - 0201595

<https://www.phoenixcontact.com/de/produkte/0201595>



Cross connection rail, for fixed bridging of identical inputs and outputs, made of Cu, nickel-plated, 1 m long

DIN rail, unperforated

DIN rail, unperforated - NS 35/ 7,5 AL UNPERF 2000MM - 0801704

<https://www.phoenixcontact.com/de/produkte/0801704>



DIN rail, unperforated, acc. to EN 60715, material: Aluminum, uncoated, Standard profile, color: silver, Pack of 25 (50 m)

Feed-through terminal block - UK 5 N YE

3003952

<https://www.phoenixcontact.com/de/produkte/3003952>

Short-circuit connector

Short-circuit connector - KSS 6 - 0301547

<https://www.phoenixcontact.com/de/produkte/0301547>



Short-circuit connector, pitch: 6 mm, color: black

DIN rail perforated

DIN rail perforated - NS 35/ 7,5 ZN PERF 2000MM - 1206421

<https://www.phoenixcontact.com/de/produkte/1206421>



DIN rail perforated, acc. to EN 60715, material: Steel, galvanized, Standard profile, color: silver, Pack of 25 (50 m)

Feed-through terminal block - UK 5 N YE

3003952

<https://www.phoenixcontact.com/de/produkte/3003952>



Short-circuit connector

Short-circuit connector - KSS 3- 6 - 0309523

<https://www.phoenixcontact.com/de/produkte/0309523>



Short-circuit connector, pitch: 6 mm, color: black

DIN rail, unperforated

DIN rail, unperforated - NS 35/ 7,5 ZN UNPERF 2000MM - 1206434

<https://www.phoenixcontact.com/de/produkte/1206434>



DIN rail, unperforated, acc. to EN 60715, material: Steel, galvanized, Standard profile, color: silver, Pack of 25 (50 m)

Feed-through terminal block - UK 5 N YE

3003952

<https://www.phoenixcontact.com/de/produkte/3003952>

Cover

Cover - EA 5 - 1024014

<https://www.phoenixcontact.com/de/produkte/1024014>

Cover, material: ABS, color: transparent



DIN rail, unperforated

DIN rail, unperforated - NS 35/ 7,5 CU UNPERF 2000MM-VPE 10 - 0801762

<https://www.phoenixcontact.com/de/produkte/0801762>



DIN rail, unperforated, acc. to EN 60715, material: Copper, uncoated, Standard profile, color: copper-colored, Pack of 10 (20 m)

Feed-through terminal block - UK 5 N YE

3003952

<https://www.phoenixcontact.com/de/produkte/3003952>

Cover

Cover - EA 5-WS - 1024085

<https://www.phoenixcontact.com/de/produkte/1024085>

Single covers, for covering one terminal block, with black symbol (lightning flash)
snap fit, color: transparent/yellow



End cap

End cap - NS 35/ 7,5 CAP - 1206560

<https://www.phoenixcontact.com/de/produkte/1206560>

DIN rail end piece, for DIN rail NS 35/7.5



Feed-through terminal block - UK 5 N YE

3003952

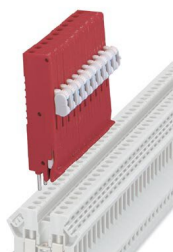
<https://www.phoenixcontact.com/de/produkte/3003952>



Test plugs

Test plugs - PS-UK 2,5 B/Z-6 - 3001239

<https://www.phoenixcontact.com/de/produkte/3001239>



Test plugs, color: red

DIN rail perforated

DIN rail perforated - NS 35/15 PERF 2000MM - 1201730

<https://www.phoenixcontact.com/de/produkte/1201730>



DIN rail perforated, similar to EN 60715, material: Steel, galvanized, passivated with a thick layer, Standard profile, color: silver, Pack of 25 (50 m)

Feed-through terminal block - UK 5 N YE

3003952

<https://www.phoenixcontact.com/de/produkte/3003952>

Test plugs

Test plugs - PS-UK 2,5 B/E - 3001132

<https://www.phoenixcontact.com/de/produkte/3001132>



Test plugs, color: red

DIN rail, unperforated

DIN rail, unperforated - NS 35/15 UNPERF 2000MM - 1201714

<https://www.phoenixcontact.com/de/produkte/1201714>



DIN rail, unperforated, similar to EN 60715, material: Steel, galvanized, passivated with a thick layer, Standard profile, color: silver, Pack of 25 (50 m)

Feed-through terminal block - UK 5 N YE

3003952

<https://www.phoenixcontact.com/de/produkte/3003952>

Reducing plug

Reducing plug - RPS - 0201647

<https://www.phoenixcontact.com/de/produkte/0201647>



Reducing plug, color: gray

DIN rail perforated

DIN rail perforated - NS 35/15 WH PERF 2000MM - 0806602

<https://www.phoenixcontact.com/de/produkte/0806602>



DIN rail perforated, similar to EN 60715, material: Steel, Galvanized, white passivated, Standard profile, color: white, Pack of 25 (50 m)

Feed-through terminal block - UK 5 N YE

3003952

<https://www.phoenixcontact.com/de/produkte/3003952>



Step bracket

Step bracket - STL 10N/5N - 0204110

<https://www.phoenixcontact.com/de/produkte/0204110>



Step bracket, pitch: 5 mm, color: silver

DIN rail, unperforated

DIN rail, unperforated - NS 35/15 WH UNPERF 2000MM-VPE 10 - 1204135

<https://www.phoenixcontact.com/de/produkte/1204135>



DIN rail, unperforated, similar to EN 60715, material: Steel, Galvanized, white passivated, Standard profile, color: silver, Pack of 10 (20 m)

Feed-through terminal block - UK 5 N YE

3003952

<https://www.phoenixcontact.com/de/produkte/3003952>



Step bracket

Step bracket - STL 35/ 5 - 0204107

<https://www.phoenixcontact.com/de/produkte/0204107>

Step bracket, pitch: 5 mm, color: silver



DIN rail, unperforated

DIN rail, unperforated - NS 35/15 AL UNPERF 2000MM - 1201756

<https://www.phoenixcontact.com/de/produkte/1201756>

DIN rail, unperforated, similar to EN 60715, material: Aluminum, uncoated,
Standard profile, color: silver



Feed-through terminal block - UK 5 N YE

3003952

<https://www.phoenixcontact.com/de/produkte/3003952>

Separating plate

Separating plate - TS-K - 1302215

<https://www.phoenixcontact.com/de/produkte/1302215>



Separating plate, length: 22 mm, width: 0.5 mm, height: 22 mm, color: gray

DIN rail perforated

DIN rail perforated - NS 35/15 ZN PERF 2000MM - 1206599

<https://www.phoenixcontact.com/de/produkte/1206599>



DIN rail perforated, similar to EN 60715, material: Steel, galvanized, Standard profile, color: silver, Pack of 25 (50 m)

Feed-through terminal block - UK 5 N YE

3003952

<https://www.phoenixcontact.com/de/produkte/3003952>

Partition plate

Partition plate - ATP-UK - 3003224

<https://www.phoenixcontact.com/de/produkte/3003224>



Partition plate, length: 56 mm, width: 1.5 mm, height: 45.7 mm, color: gray

DIN rail, unperforated

DIN rail, unperforated - NS 35/15 ZN UNPERF 2000MM - 1206586

<https://www.phoenixcontact.com/de/produkte/1206586>



DIN rail, unperforated, similar to EN 60715, material: Steel, galvanized, Standard profile, color: silver, Pack of 25 (50 m)

Feed-through terminal block - UK 5 N YE

3003952

<https://www.phoenixcontact.com/de/produkte/3003952>

Marker card

Marker card - SBS 6:UNBEDRUCKT - 1007222

<https://www.phoenixcontact.com/de/produkte/1007222>



Marker card, Card, white, unlabeled, can be labeled with: Marker pen, mounting type: snapped, snap into flat marker groove, for terminal block width: 6 mm, lettering field size: 6 x 6.1 mm, Number of individual labels: 250

DIN rail, unperforated

DIN rail, unperforated - NS 35/15 CU UNPERF 2000MM-VPE 10 - 1201895

<https://www.phoenixcontact.com/de/produkte/1201895>



DIN rail, unperforated, similar to EN 60715, material: Copper, uncoated, Standard profile, color: copper-colored, Pack of 10 (20 m)

Feed-through terminal block - UK 5 N YE

3003952

<https://www.phoenixcontact.com/de/produkte/3003952>

Screwdriver

Screwdriver - SF-SL 0,6X3,5-100 S-VDE - 1212587

<https://www.phoenixcontact.com/de/produkte/1212587>



Actuation tool, for ST terminal blocks, VDE insulated, with slimmer insulation integrated in the blade, also suitable for use as a bladed screwdriver, size: 0.6 x 3.5 x 100 mm, 2-component grip, with non-slip grip

End cap

End cap - NS 35/15 CAP - 1206573

<https://www.phoenixcontact.com/de/produkte/1206573>



DIN rail end piece, for DIN rail NS 35/15

Feed-through terminal block - UK 5 N YE

3003952

<https://www.phoenixcontact.com/de/produkte/3003952>

DIN rail, unperforated

DIN rail, unperforated - NS 35/15-2,3 UNPERF 2000MM-VPE 10 - 1201798

<https://www.phoenixcontact.com/de/produkte/1201798>



DIN rail, unperforated, acc. to EN 60715, material: Steel, galvanized, passivated with a thick layer, Standard profile 2.3 mm, color: silver, Pack of 10 (20 m)

Zack marker strip

Zack marker strip - ZB 6:UNBEDRUCKT - 1051003

<https://www.phoenixcontact.com/de/produkte/1051003>



Zack marker strip, Strip, white, unlabeled, can be labeled with: PLOTMARK, CMS-P1-PLOTTER, mounting type: snapped, for terminal block width: 6.2 mm, lettering field size: 6.15 x 10.5 mm, Number of individual labels: 10

Feed-through terminal block - UK 5 N YE

3003952

<https://www.phoenixcontact.com/de/produkte/3003952>

Zack marker strip

Zack marker strip - ZB 6 CUS - 0824992

<https://www.phoenixcontact.com/de/produkte/0824992>



Zack marker strip, can be ordered: Strip, white, labeled according to customer specifications, mounting type: snap into tall marker groove, for terminal block width: 6.2 mm, lettering field size: 6.15 x 10.5 mm, Number of individual labels: 10

Zack marker strip

Zack marker strip - ZB 6,LGS:FORTL.ZAHLEN - 1051016

<https://www.phoenixcontact.com/de/produkte/1051016>



Zack marker strip, Strip, white, labeled, can be labeled with: CMS-P1-PLOTTER, printed horizontally: consecutive numbers 1 ... 10, 11 ... 20, etc. up to 491 ... 500, mounting type: snapped, for terminal block width: 6.2 mm, lettering field size: 6.15 x 10.5 mm, Number of individual labels: 10

Feed-through terminal block - UK 5 N YE

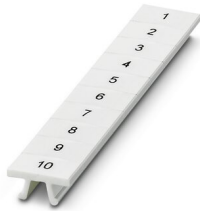
3003952

<https://www.phoenixcontact.com/de/produkte/3003952>

Zack marker strip

Zack marker strip - ZB 6,QR:FORTL.ZAHLEN - 1051029

<https://www.phoenixcontact.com/de/produkte/1051029>



Zack marker strip, Strip, white, labeled, can be labeled with: CMS-P1-PLOTTER, Printed vertically: consecutive numbers 1 ... 10, 11 ... 20, etc. up to 491 ... 500, mounting type: snapped, for terminal block width: 6.2 mm, lettering field size: 6.15 x 10.5 mm, Number of individual labels: 10

Zack marker strip

Zack marker strip - ZB 6,LGS:GLEICHE ZAHLEN - 1051032

<https://www.phoenixcontact.com/de/produkte/1051032>



Zack marker strip, Strip, white, labeled, can be labeled with: CMS-P1-PLOTTER, printed horizontally: Identical numbers 1 or 2, etc. up to 100, mounting type: snapped, for terminal block width: 6.2 mm, lettering field size: 6.15 x 10.5 mm, Number of individual labels: 10

Feed-through terminal block - UK 5 N YE

3003952

<https://www.phoenixcontact.com/de/produkte/3003952>

Marker for terminal blocks

Marker for terminal blocks - ZB 6,LGS:L1-N,PE - 1051414

<https://www.phoenixcontact.com/de/produkte/1051414>



Marker for terminal blocks, Strip, white, labeled, can be labeled with: CMS-P1-PLOTTER, horizontal: L1, L2, L3, N, PE, L1, L2, L3, N, PE, mounting type: snapped, for terminal block width: 6.2 mm, lettering field size: 6.15 x 10.5 mm, Number of individual labels: 10

Marker for terminal blocks

Marker for terminal blocks - ZB 6,LGS:U-N - 1051430

<https://www.phoenixcontact.com/de/produkte/1051430>



Marker for terminal blocks, Strip, white, labeled, can be labeled with: CMS-P1-PLOTTER, printed horizontally: U, V, W, N, GND, U, V, W, N, GND, mounting type: snapped, for terminal block width: 6.2 mm, lettering field size: 6.15 x 10.5 mm, Number of individual labels: 10

Feed-through terminal block - UK 5 N YE

3003952

<https://www.phoenixcontact.com/de/produkte/3003952>

Marker for terminal blocks

Marker for terminal blocks - UC-TM 6 - 0818085

<https://www.phoenixcontact.com/de/produkte/0818085>



Marker for terminal blocks, Sheet, white, unlabeled, can be labeled with: BLUEMARK ID COLOR, BLUEMARK ID, BLUEMARK CLED, PLOTMARK, CMS-P1-PLOTTER, mounting type: snapped, for terminal block width: 6.2 mm, lettering field size: 5.6 x 10.5 mm, Number of individual labels: 80

Marker for terminal blocks

Marker for terminal blocks - UC-TM 6 CUS - 0824589

<https://www.phoenixcontact.com/de/produkte/0824589>



Marker for terminal blocks, can be ordered: by sheet, white, labeled according to customer specifications, mounting type: snap into tall marker groove, for terminal block width: 6.2 mm, lettering field size: 5.6 x 10.5 mm, Number of individual labels: 80

Feed-through terminal block - UK 5 N YE

3003952

<https://www.phoenixcontact.com/de/produkte/3003952>

Marker for terminal blocks

Marker for terminal blocks - UCT-TM 6 - 0828736

<https://www.phoenixcontact.com/de/produkte/0828736>



Marker for terminal blocks, Sheet, white, unlabeled, can be labeled with: TOPMARK NEO, TOPMARK LASER, BLUEMARK ID COLOR, BLUEMARK ID, BLUEMARK CLED, THERMOMARK PRIME, THERMOMARK CARD 2.0, THERMOMARK CARD, mounting type: snapped, for terminal block width: 6.2 mm, lettering field size: 5.6 x 10.5 mm, Number of individual labels: 60

Marker for terminal blocks

Marker for terminal blocks - UCT-TM 6 CUS - 0829602

<https://www.phoenixcontact.com/de/produkte/0829602>



Marker for terminal blocks, can be ordered: by sheet, white, labeled according to customer specifications, mounting type: snap into tall marker groove, for terminal block width: 6.2 mm, lettering field size: 5.6 x 10.5 mm, Number of individual labels: 60

Feed-through terminal block - UK 5 N YE

3003952

<https://www.phoenixcontact.com/de/produkte/3003952>

Test plugs

Test plugs - MPS-MT - 0201744

<https://www.phoenixcontact.com/de/produkte/0201744>



Test plugs, with solder connection up to 1 mm² conductor cross section, color: gray

Insulating sleeve

Insulating sleeve - MPS-IH WH - 0201663

<https://www.phoenixcontact.com/de/produkte/0201663>



Insulating sleeve, color: white

Feed-through terminal block - UK 5 N YE

3003952

<https://www.phoenixcontact.com/de/produkte/3003952>



Insulating sleeve

Insulating sleeve - MPS-IH RD - 0201676

<https://www.phoenixcontact.com/de/produkte/0201676>

Insulating sleeve, color: red

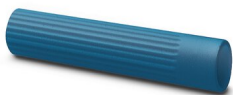


Insulating sleeve

Insulating sleeve - MPS-IH BU - 0201689

<https://www.phoenixcontact.com/de/produkte/0201689>

Insulating sleeve, color: blue



Feed-through terminal block - UK 5 N YE

3003952

<https://www.phoenixcontact.com/de/produkte/3003952>

Insulating sleeve

Insulating sleeve - MPS-IH YE - 0201692

<https://www.phoenixcontact.com/de/produkte/0201692>

Insulating sleeve, color: yellow



Insulating sleeve

Insulating sleeve - MPS-IH GN - 0201702

<https://www.phoenixcontact.com/de/produkte/0201702>

Insulating sleeve, color: green



Feed-through terminal block - UK 5 N YE

3003952

<https://www.phoenixcontact.com/de/produkte/3003952>

Insulating sleeve

Insulating sleeve - MPS-IH GY - 0201728

<https://www.phoenixcontact.com/de/produkte/0201728>

Insulating sleeve, color: gray



Insulating sleeve

Insulating sleeve - MPS-IH BK - 0201731

<https://www.phoenixcontact.com/de/produkte/0201731>

Insulating sleeve, color: black



Feed-through terminal block - UK 5 N YE

3003952

<https://www.phoenixcontact.com/de/produkte/3003952>

End clamp

End clamp - CLIPFIX 35 - 3022218

<https://www.phoenixcontact.com/de/produkte/3022218>



Quick mounting end clamp for NS 35/7,5 DIN rail or NS 35/15 DIN rail, with marking option, width: 9.5 mm, color: gray

End clamp

End clamp - CLIPFIX 35-5 - 3022276

<https://www.phoenixcontact.com/de/produkte/3022276>



Quick mounting end clamp for NS 35/7,5 DIN rail or NS 35/15 DIN rail, with marking option, with parking option for FBS...5, FBS...6, KSS 5, KSS 6, width: 5.15 mm, color: gray

Feed-through terminal block - UK 5 N YE

3003952

<https://www.phoenixcontact.com/de/produkte/3003952>

End clamp

End clamp - E/NS 35 N - 0800886

<https://www.phoenixcontact.com/de/produkte/0800886>

End clamp, width: 9.5 mm, color: gray



End clamp

End clamp - E/UK - 1201442

<https://www.phoenixcontact.com/de/produkte/1201442>

End clamp, material: PA, color: gray, Mounting on a DIN rail NS 32 or NS 35



Feed-through terminal block - UK 5 N YE

3003952

<https://www.phoenixcontact.com/de/produkte/3003952>



End clamp

End clamp - E/UK 1 - 1201413

<https://www.phoenixcontact.com/de/produkte/1201413>



End clamps, for supporting the ends of double-level and three-level terminal blocks, width: 10 mm, color: gray

Female test connector

Female test connector - PSBJ 3/13/4 - 0201304

<https://www.phoenixcontact.com/de/produkte/0201304>



Female test connector, color: silver

Feed-through terminal block - UK 5 N YE

3003952

<https://www.phoenixcontact.com/de/produkte/3003952>



Female test connector

Female test connector - PSB 3/10/4 - 0601292

<https://www.phoenixcontact.com/de/produkte/0601292>



Female test connector, color: silver

Phoenix Contact 2022 © - all rights reserved

<https://www.phoenixcontact.com>

PHOENIX CONTACT Deutschland GmbH

Flachsmarktstraße 8

D-32825 Blomberg

+49 52 35/3-1 20 00

info@phoenixcontact.de