

# Bolt connection terminal block - RBO 16-HC

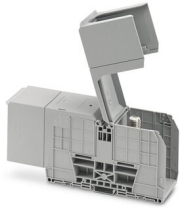


3247989

<https://www.phoenixcontact.com/de/produkte/3247989>

Please be informed that the data shown in this PDF document is generated from our Online Catalog. Please find the complete data in the user documentation. Our General Terms of Use for Downloads are valid.

---



Bolt connection terminal block, nom. voltage: 1500 V, nominal current: 520 A, connection method: Bolt connection, 1 level, Rated cross section: 300 mm<sup>2</sup>, mounting type: NS 35/7,5, NS 35/15, direct screw connection, color: gray

---

## Your advantages

- Tested for railway applications

# Bolt connection terminal block - RBO 16-HC



3247989

<https://www.phoenixcontact.com/de/produkte/3247989>

## Commercial Data

Item number	3247989
Packing unit	5 pc
Minimum order quantity	5 pc
Sales Key	A1 - Reihenklemmen
Product Key	BE4412
Catalog Page	Page 393 (C-1-2019)
GTIN	4046356725163
Weight per Piece (including packing)	658 g
Weight per Piece (excluding packing)	637,06 g
Customs tariff number	85369010
Country of origin	CN

# Bolt connection terminal block - RBO 16-HC



3247989

<https://www.phoenixcontact.com/de/produkte/3247989>

## Technical Data

### Product properties

Product type	Bolt connection terminal block
Number of positions	1
Pitch	54.8 mm
Area of application	Railway industry
	Machine building
	Plant engineering
Number of connections	2
Number of rows	1
Potentials	1

### Insulation characteristics

Overvoltage category	III
Degree of pollution	3

### Electrical properties

Rated surge voltage	8 kV
Maximum power dissipation for nominal condition	16.22 W

### Connection data

Number of connections per level	2
Nominal cross section	300 mm <sup>2</sup>

#### 1 level

Stripping length	The stripping length depends on the specification provided by the cable lug manufacturer.
Nominal current	520 A
Maximum load current	520 A (At a conductor cross section of 300 mm <sup>2</sup> )
Nominal voltage	1500 V
Nominal cross section	300 mm <sup>2</sup>

#### Cable lug connection DIN 46234:1980-03

Connection in acc. with standard	DIN 46234:1980-03
Cross section	25 mm <sup>2</sup> ... 240 mm <sup>2</sup>
Cross section range AWG	4 ... 500 kcmil
Hole diameter	17 mm
Width	38 mm
Bolt diameter	16 mm
Screw thread	M16
Tightening torque	25 ... 35 Nm
Connection in acc. with standard	DIN 46235:1983-07
Cross section	50 mm <sup>2</sup> ... 300 mm <sup>2</sup>
Cross section range AWG	0 ... 500 kcmil

# Bolt connection terminal block - RBO 16-HC



3247989

<https://www.phoenixcontact.com/de/produkte/3247989>

Hole diameter	17 mm
Width	48 mm
Bolt diameter	16 mm
Screw thread	M16
Tightening torque	25 ... 35 Nm

## Ex data

### Rated data (ATEX/IECEX)

ATEX certificate	SEV 13 ATEX 0132 U
IEC Ex certificate	IECEX SEV 13.0003 U
Identification	II 2 GD Ex eb IIC
Operating temperature range	-60 °C ... 110 °C
Ex-certified accessories	0800886 E/NS 35 N
Bridge data	520 A / 300 mm <sup>2</sup>
Ex temperature increase	40 K (520 A / 300 mm <sup>2</sup> )
Rated voltage	1000 V
for bridging with bridge	1100 V
Rated insulation voltage	1000 V

### Ex level General

Rated current	520 A
Maximum load current	520 A
Contact resistance	0.02 mΩ

### Ex connection data General

Torque range	25 Nm ... 35 Nm
Nominal cross section	300 mm <sup>2</sup>
Rated cross section AWG	600 kcmil
Connection capacity rigid	25 mm <sup>2</sup> ... 300 mm <sup>2</sup>
Connection capacity AWG	4 ... 600 kcmil
Connection capacity flexible	25 mm <sup>2</sup> ... 300 mm <sup>2</sup>
Connection capacity AWG	4 ... 600 kcmil
2 conductors with same cross section, solid	25 mm <sup>2</sup> ... 300 mm <sup>2</sup>
2 conductors with the same cross-section AWG rigid	4 ... 600 kcmil
2 conductors with same cross section, stranded	25 mm <sup>2</sup> ... 300 mm <sup>2</sup>
2 conductors with the same cross-section AWG flexible	4 ... 600 kcmil

## Dimensions

# Bolt connection terminal block - RBO 16-HC



3247989

<https://www.phoenixcontact.com/de/produkte/3247989>

Dimensional drawing	
Width	54.8 mm
Height NS 35/15	99.3 mm
Height NS 35/7,5	91.8 mm
Length	283.5 mm
Bolt length	45 mm
Pitch	54.8 mm

## Material specifications

Color	gray
Flammability rating according to UL 94	V0
Insulating material group	I
Insulating material	PA
Static insulating material application in cold	-60 °C
Temperature index of insulation material (DIN EN 60216-1 (VDE 0304-21))	130 °C
Relative insulation material temperature index (Elec., UL 746 B)	130 °C
Fire protection for rail vehicles (DIN EN 45545-2) R22	HL 1 - HL 3
Fire protection for rail vehicles (DIN EN 45545-2) R23	HL 1 - HL 3
Fire protection for rail vehicles (DIN EN 45545-2) R24	HL 1 - HL 3
Fire protection for rail vehicles (DIN EN 45545-2) R26	HL 1 - HL 3
Calorimetric heat release NFPA 130 (ASTM E 1354)	28 MJ/kg
Surface flammability NFPA 130 (ASTM E 162)	passed
Specific optical density of smoke NFPA 130 (ASTM E 662)	passed
Smoke gas toxicity NFPA 130 (SMP 800C)	passed

## Electrical tests

### Surge voltage test

Test voltage setpoint	12 kV
Result	Test passed

### Temperature-rise test

Requirement temperature-rise test	Increase in temperature ≤ 45 K
Result	Test passed
Short-time withstand current 300 mm <sup>2</sup>	36 kA
Result	Test passed

### Power-frequency withstand voltage

Test voltage setpoint	2.2 kV
Result	Test passed

## Mechanical properties

### Mechanical data

Open side panel	No
-----------------	----

## Mechanical tests

### Mechanical strength

Result	Test passed
--------	-------------

### Attachment on the carrier

DIN rail/fixing support	NS 35
Test force setpoint	20 N
Result	Test passed

## Environmental and real-life conditions

### Needle-flame test

Time of exposure	30 s
Result	Test passed

### Oscillation/broadband noise

Specification	DIN EN 50155 (VDE 0115-200):2008-03
Spectrum	Service life test category 1, class B, body mounted
Frequency	$f_1 = 5 \text{ Hz}$ to $f_2 = 150 \text{ Hz}$
ASD level	$1.857 \text{ (m/s}^2\text{)}^2\text{/Hz}$
Acceleration	0.8g
Test duration per axis	5 h
Test directions	X-, Y- and Z-axis
Result	Test passed

### Shocks

Specification	DIN EN 50155 (VDE 0115-200):2008-03
Pulse shape	Half-sine
Acceleration	5g
Shock duration	30 ms
Number of shocks per direction	3
Test directions	X-, Y- and Z-axis (pos. and neg.)
Result	Test passed

### Ambient conditions

Ambient temperature (operation)	-60 °C ... 105 °C (max. short-term operating temperature RTI Elec.)
Ambient temperature (storage/transport)	-25 °C ... 60 °C (for a short time, not exceeding 24 h, -60 °C to +70 °C)

# Bolt connection terminal block - RBO 16-HC



3247989

<https://www.phoenixcontact.com/de/produkte/3247989>

Ambient temperature (assembly)	-5 °C ... 70 °C
Ambient temperature (actuation)	-5 °C ... 70 °C
Permissible humidity (storage/transport)	30 % ... 70 %

## Standards and regulations

Connection in acc. with standard	IEC 60947-7-1
----------------------------------	---------------

## Mounting

Mounting type	NS 35/7,5
	NS 35/15
	direct screw connection

# Bolt connection terminal block - RBO 16-HC

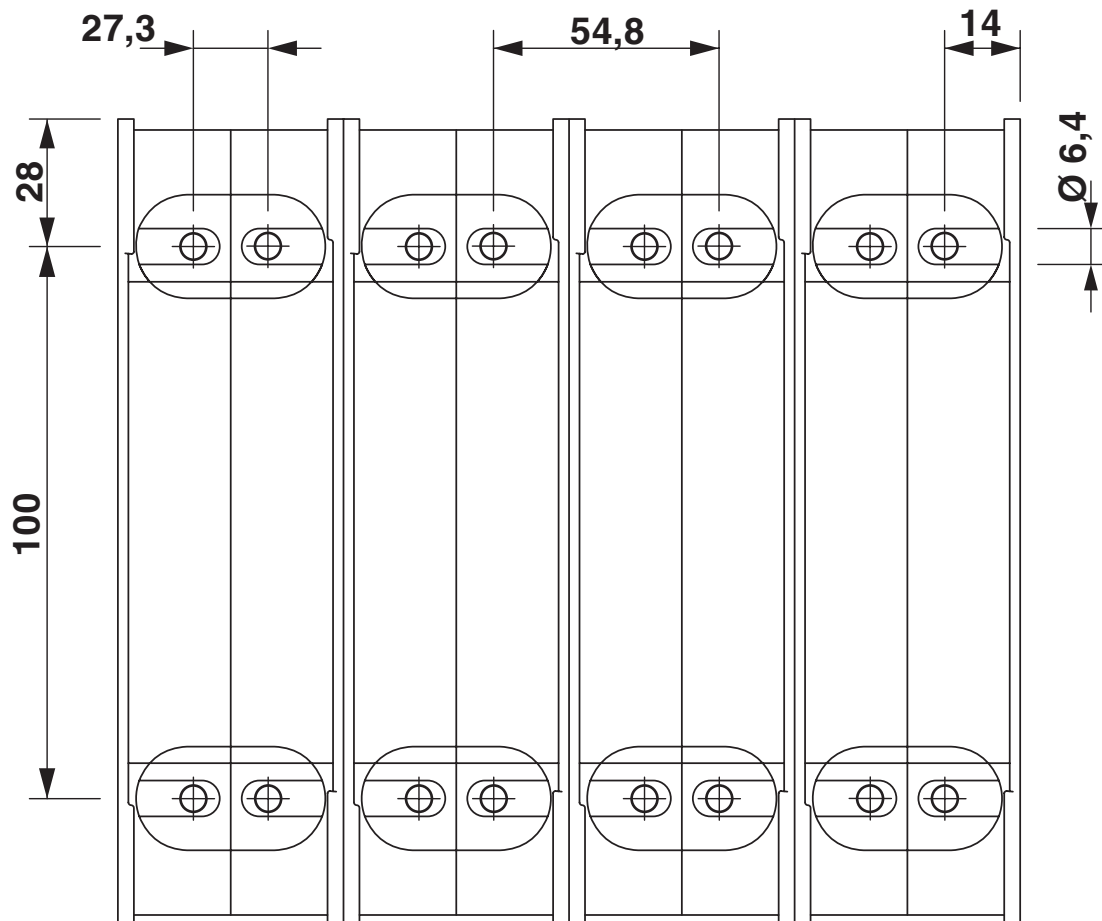


3247989

<https://www.phoenixcontact.com/de/produkte/3247989>

## Drawings

Dimensional drawing





# Bolt connection terminal block - RBO 16-HC



3247989

<https://www.phoenixcontact.com/de/produkte/3247989>

Circuit diagram




# Bolt connection terminal block - RBO 16-HC





3247989

<https://www.phoenixcontact.com/de/produkte/3247989>


## Approvals


 <b>CSA</b> Approval ID: 13631				
	Nominal Voltage $U_N$	Nominal Current $I_N$	Cross Section AWG	Cross Section $\text{mm}^2$
Use group C	1000 V	540 A	4 - 1000	-


 <b>UL Recognized</b> Approval ID: E60425				
	Nominal Voltage $U_N$	Nominal Current $I_N$	Cross Section AWG	Cross Section $\text{mm}^2$
Use group B	600 V	540 A	4 - 1000	-
Use group C	600 V	540 A	4 - 1000	-
Use group E	1000 V	540 A	4 - 1000	-

 <b>EAC</b> Approval ID: RU C-DE.AI30.B.01102				
---	--	--	--	--

 <b>EAC</b> Approval ID: RU C-DE.BL08.B.00540				
---	--	--	--	--

 <b>EAC Ex</b> Approval ID: RU C-DE.HA91.B.00066				
--	--	--	--	--

 <b>IECEX</b> Approval ID: IECEX SEV13.0003U				
	Nominal Voltage $U_N$	Nominal Current $I_N$	Cross Section AWG	Cross Section $\text{mm}^2$
	1100 V	520 A	-	25 - 300

 <b>ATEX</b> Approval ID: SEV13ATEX0132U				
	Nominal Voltage $U_N$	Nominal Current $I_N$	Cross Section AWG	Cross Section $\text{mm}^2$
	1100 V	520 A	-	25 - 300

 <b>CCC</b> Approval ID: 2020322313000627				
---	--	--	--	--

# Bolt connection terminal block - RBO 16-HC



3247989

<https://www.phoenixcontact.com/de/produkte/3247989>



**NEPSI**

Approval ID: GYJ20.1202U

# Bolt connection terminal block - RBO 16-HC



3247989

<https://www.phoenixcontact.com/de/produkte/3247989>

## Classifications

### ECLASS

ECLASS-9.0	27141120
ECLASS-10.0.1	27141120
ECLASS-11.0	27141120

### ETIM

ETIM 8.0	EC000897
----------	----------

### UNSPSC

UNSPSC 21.0	39121400
-------------	----------

# Bolt connection terminal block - RBO 16-HC



3247989

<https://www.phoenixcontact.com/de/produkte/3247989>

## Environmental Product Compliance

China RoHS	Environmentally friendly use period: unlimited = EFUP-e
	No hazardous substances above threshold values

# Bolt connection terminal block - RBO 16-HC

3247989

<https://www.phoenixcontact.com/de/produkte/3247989>

## Accessories

**i** Note: Applying some accessories below might limit this product.

### Connection rail

Connection rail - RBO 16-VS 3 - 3244698

<https://www.phoenixcontact.com/de/produkte/3244698>



Connection rail, color: silver

**i** Max. current carrying capacity: 520 A

### Covering hood

Covering hood - HC-RBO 16 - 3247996

<https://www.phoenixcontact.com/de/produkte/3247996>



Covering hood, length: 164 mm, width: 54.8 mm, height: 33 mm, color: gray

**i** Max. current carrying capacity: 520 A

# Bolt connection terminal block - RBO 16-HC

3247989

<https://www.phoenixcontact.com/de/produkte/3247989>


## Connection rail

Connection rail - RBO 16-VS 2 - 3244685

<https://www.phoenixcontact.com/de/produkte/3244685>

Connection rail, color: silver



 Max. current carrying capacity: 520 A

---

## Label

Label - EML (51X25)R YE /RBO8 - 0801353

<https://www.phoenixcontact.com/de/produkte/0801353>



Label, yellow/black, labeled, can be labeled with: THERMOMARK ROLL 2.0, THERMOMARK ROLL, THERMOMARK ROLL X1, THERMOMARK ROLLMASTER 300/600, THERMOMARK X1.2: Lightning flash, mounting type: adhesive, lettering field size: 51 x 25 mm

# Bolt connection terminal block - RBO 16-HC

3247989

<https://www.phoenixcontact.com/de/produkte/3247989>

## DIN rail perforated

DIN rail perforated - NS 35/ 7,5 PERF 2000MM - 0801733

<https://www.phoenixcontact.com/de/produkte/0801733>



DIN rail perforated, acc. to EN 60715, material: Steel, galvanized, passivated with a thick layer, Standard profile, color: silver, Pack of 25 (50 m)

---

## Terminal strip marker carrier

Terminal strip marker carrier - KLM 3-L - 0814788

<https://www.phoenixcontact.com/de/produkte/0814788>



Terminal strip marker carrier, height-adjustable, for end brackets CLIPFIX 15, CLIPFIX 35 and CLIPFIX 35-5, can be labeled with BMK...20 x 8 labels, or directly with the M-PEN or X-PEN



# Bolt connection terminal block - RBO 16-HC

3247989

<https://www.phoenixcontact.com/de/produkte/3247989>

## DIN rail, unperforated

DIN rail, unperforated - NS 35/ 7,5 UNPERF 2000MM - 0801681

<https://www.phoenixcontact.com/de/produkte/0801681>



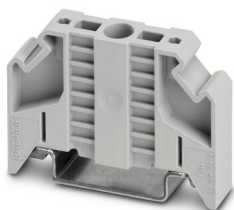
DIN rail, unperforated, acc. to EN 60715, material: Steel, galvanized, passivated with a thick layer, Standard profile, color: silver, Pack of 25 (50 m)

---

## End clamp

End clamp - E/NS 35 N - 0800886

<https://www.phoenixcontact.com/de/produkte/0800886>



End clamp, width: 9.5 mm, color: gray

# Bolt connection terminal block - RBO 16-HC

3247989

<https://www.phoenixcontact.com/de/produkte/3247989>

## DIN rail perforated

DIN rail perforated - NS 35/ 7,5 WH PERF 2000MM - 1204119

<https://www.phoenixcontact.com/de/produkte/1204119>



DIN rail perforated, acc. to EN 60715, material: Steel, Galvanized, white passivated, Standard profile, color: silver, Pack of 25 (50 m)

---

## Warning label

Warning label - PML-W101 (25X25) - 0830433

<https://www.phoenixcontact.com/de/produkte/0830433>



Warning label, Sheet, yellow/black, labeled: Lightning flash, mounting type: adhesive, diameter: 0 mm, lettering field size: 25 x 25 mm, Number of individual labels: 25

# Bolt connection terminal block - RBO 16-HC

3247989

<https://www.phoenixcontact.com/de/produkte/3247989>

## DIN rail, unperforated

DIN rail, unperforated - NS 35/ 7,5 WH UNPERF 2000MM-VPE 10 - 1204122

<https://www.phoenixcontact.com/de/produkte/1204122>



DIN rail, unperforated, acc. to EN 60715, material: Steel, Galvanized, white passivated, Standard profile, color: silver, Pack of 10 (20 m)

---

## DIN rail, unperforated

DIN rail, unperforated - NS 35/ 7,5 AL UNPERF 2000MM - 0801704

<https://www.phoenixcontact.com/de/produkte/0801704>



DIN rail, unperforated, acc. to EN 60715, material: Aluminum, uncoated, Standard profile, color: silver, Pack of 25 (50 m)

# Bolt connection terminal block - RBO 16-HC

3247989

<https://www.phoenixcontact.com/de/produkte/3247989>

## DIN rail perforated

DIN rail perforated - NS 35/ 7,5 ZN PERF 2000MM - 1206421

<https://www.phoenixcontact.com/de/produkte/1206421>



DIN rail perforated, acc. to EN 60715, material: Steel, galvanized, Standard profile, color: silver, Pack of 25 (50 m)

---

## DIN rail, unperforated

DIN rail, unperforated - NS 35/ 7,5 ZN UNPERF 2000MM - 1206434

<https://www.phoenixcontact.com/de/produkte/1206434>



DIN rail, unperforated, acc. to EN 60715, material: Steel, galvanized, Standard profile, color: silver, Pack of 25 (50 m)

# Bolt connection terminal block - RBO 16-HC

3247989

<https://www.phoenixcontact.com/de/produkte/3247989>

## DIN rail, unperforated

DIN rail, unperforated - NS 35/ 7,5 CU UNPERF 2000MM-VPE 10 - 0801762

<https://www.phoenixcontact.com/de/produkte/0801762>



DIN rail, unperforated, acc. to EN 60715, material: Copper, uncoated, Standard profile, color: copper-colored, Pack of 10 (20 m)

---

## End cap

End cap - NS 35/ 7,5 CAP - 1206560

<https://www.phoenixcontact.com/de/produkte/1206560>

DIN rail end piece, for DIN rail NS 35/7.5



# Bolt connection terminal block - RBO 16-HC

3247989

<https://www.phoenixcontact.com/de/produkte/3247989>

## DIN rail perforated

DIN rail perforated - NS 35/15 PERF 2000MM - 1201730

<https://www.phoenixcontact.com/de/produkte/1201730>



DIN rail perforated, similar to EN 60715, material: Steel, galvanized, passivated with a thick layer, Standard profile, color: silver, Pack of 25 (50 m)

---

## DIN rail, unperforated

DIN rail, unperforated - NS 35/15 UNPERF 2000MM - 1201714

<https://www.phoenixcontact.com/de/produkte/1201714>



DIN rail, unperforated, similar to EN 60715, material: Steel, galvanized, passivated with a thick layer, Standard profile, color: silver, Pack of 25 (50 m)

# Bolt connection terminal block - RBO 16-HC

3247989

<https://www.phoenixcontact.com/de/produkte/3247989>

## DIN rail perforated

DIN rail perforated - NS 35/15 WH PERF 2000MM - 0806602

<https://www.phoenixcontact.com/de/produkte/0806602>



DIN rail perforated, similar to EN 60715, material: Steel, Galvanized, white passivated, Standard profile, color: white, Pack of 25 (50 m)

---

## DIN rail, unperforated

DIN rail, unperforated - NS 35/15 WH UNPERF 2000MM-VPE 10 - 1204135

<https://www.phoenixcontact.com/de/produkte/1204135>



DIN rail, unperforated, similar to EN 60715, material: Steel, Galvanized, white passivated, Standard profile, color: silver, Pack of 10 (20 m)

# Bolt connection terminal block - RBO 16-HC

3247989

<https://www.phoenixcontact.com/de/produkte/3247989>

## DIN rail, unperforated

DIN rail, unperforated - NS 35/15 AL UNPERF 2000MM - 1201756

<https://www.phoenixcontact.com/de/produkte/1201756>



DIN rail, unperforated, similar to EN 60715, material: Aluminum, uncoated, Standard profile, color: silver

---

## DIN rail perforated

DIN rail perforated - NS 35/15 ZN PERF 2000MM - 1206599

<https://www.phoenixcontact.com/de/produkte/1206599>



DIN rail perforated, similar to EN 60715, material: Steel, galvanized, Standard profile, color: silver, Pack of 25 (50 m)



# Bolt connection terminal block - RBO 16-HC

3247989

<https://www.phoenixcontact.com/de/produkte/3247989>

## DIN rail, unperforated

DIN rail, unperforated - NS 35/15 ZN UNPERF 2000MM - 1206586

<https://www.phoenixcontact.com/de/produkte/1206586>



DIN rail, unperforated, similar to EN 60715, material: Steel, galvanized, Standard profile, color: silver, Pack of 25 (50 m)

---

## DIN rail, unperforated

DIN rail, unperforated - NS 35/15 CU UNPERF 2000MM-VPE 10 - 1201895

<https://www.phoenixcontact.com/de/produkte/1201895>



DIN rail, unperforated, similar to EN 60715, material: Copper, uncoated, Standard profile, color: copper-colored, Pack of 10 (20 m)

# Bolt connection terminal block - RBO 16-HC

3247989

<https://www.phoenixcontact.com/de/produkte/3247989>

## End cap

End cap - NS 35/15 CAP - 1206573

<https://www.phoenixcontact.com/de/produkte/1206573>

DIN rail end piece, for DIN rail NS 35/15



---

## DIN rail, unperforated

DIN rail, unperforated - NS 35/15-2,3 UNPERF 2000MM-VPE 10 - 1201798

<https://www.phoenixcontact.com/de/produkte/1201798>



DIN rail, unperforated, acc. to EN 60715, material: Steel, galvanized, passivated with a thick layer, Standard profile 2.3 mm, color: silver, Pack of 10 (20 m)

# Bolt connection terminal block - RBO 16-HC

3247989

<https://www.phoenixcontact.com/de/produkte/3247989>

## Zack marker strip

Zack marker strip - ZB 10:UNBEDRUCKT - 1053001

<https://www.phoenixcontact.com/de/produkte/1053001>



Zack marker strip, Strip, white, unlabeled, can be labeled with: PLOTMARK, CMS-P1-PLOTTER, mounting type: snapped, for terminal block width: 10.2 mm, lettering field size: 10.5 mm x 10.15 mm, Number of individual labels: 10

---

## Zack marker strip

Zack marker strip - ZB 10 CUS - 0824941

<https://www.phoenixcontact.com/de/produkte/0824941>



Zack marker strip, can be ordered: Strip, white, labeled according to customer specifications, mounting type: snap into tall marker groove, for terminal block width: 10.2 mm, lettering field size: 10.15 x 10.5 mm, Number of individual labels: 10

# Bolt connection terminal block - RBO 16-HC

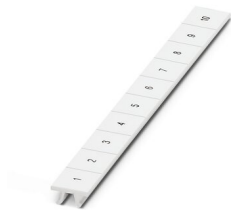
3247989

<https://www.phoenixcontact.com/de/produkte/3247989>

## Zack marker strip

Zack marker strip - ZB10,LGS:FORTL.ZAHLEN - 1053014

<https://www.phoenixcontact.com/de/produkte/1053014>



Zack marker strip, Strip, white, labeled, can be labeled with: CMS-P1-PLOTTER, printed horizontally: consecutive numbers 1 ... 10, 11 ... 20, etc. up to 91 ... 100, mounting type: snapped, for terminal block width: 10.2 mm, lettering field size: 10.15 x 10.5 mm, Number of individual labels: 10

---

## Zack marker strip

Zack marker strip - ZB10,QR:FORTL.ZAHLEN - 1053027

<https://www.phoenixcontact.com/de/produkte/1053027>



Zack marker strip, Strip, white, labeled, can be labeled with: CMS-P1-PLOTTER, Printed vertically: consecutive numbers 1 ... 10, 11 ... 20, etc. up to 91 ... 100, mounting type: snapped, for terminal block width: 10.2 mm, lettering field size: 10.15 x 10.5 mm, Number of individual labels: 10

# Bolt connection terminal block - RBO 16-HC

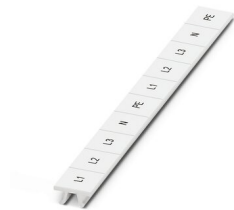
3247989

<https://www.phoenixcontact.com/de/produkte/3247989>

## Marker for terminal blocks

Marker for terminal blocks - ZB10,LGS:L1-N,PE - 1053412

<https://www.phoenixcontact.com/de/produkte/1053412>



Marker for terminal blocks, Strip, white, labeled, can be labeled with: CMS-P1-PLOTTER, horizontal: L1, L2, L3, N, PE, L1, L2, L3, N, PE, mounting type: snapped, for terminal block width: 10.2 mm, lettering field size: 10.15 x 10.5 mm, Number of individual labels: 10

---

## Marker for terminal blocks

Marker for terminal blocks - ZB10,LGS:U-N - 1053438

<https://www.phoenixcontact.com/de/produkte/1053438>



Marker for terminal blocks, Strip, white, labeled, can be labeled with: CMS-P1-PLOTTER, horizontal: U, V, W, N, GND, U, V, W, N, GND, mounting type: snapped, for terminal block width: 10.2 mm, lettering field size: 10.15 x 10.5 mm, Number of individual labels: 10

# Bolt connection terminal block - RBO 16-HC

3247989

<https://www.phoenixcontact.com/de/produkte/3247989>

## Marker for terminal blocks

Marker for terminal blocks - UC-TM 10 - 0818069

<https://www.phoenixcontact.com/de/produkte/0818069>



Marker for terminal blocks, Sheet, white, unlabeled, can be labeled with: BLUEMARK ID COLOR, BLUEMARK ID, BLUEMARK CLED, PLOTMARK, CMS-P1-PLOTTER, mounting type: snapped, for terminal block width: 10.2 mm, lettering field size: 9.6 x 10.5 mm, Number of individual labels: 48

---

## Marker for terminal blocks

Marker for terminal blocks - UC-TM 10 CUS - 0824605

<https://www.phoenixcontact.com/de/produkte/0824605>



Marker for terminal blocks, can be ordered: by sheet, white, labeled according to customer specifications, mounting type: snap into tall marker groove, for terminal block width: 10.2 mm, lettering field size: 9.6 x 10.5 mm, Number of individual labels: 48

# Bolt connection terminal block - RBO 16-HC

3247989

<https://www.phoenixcontact.com/de/produkte/3247989>

## Marker for terminal blocks

Marker for terminal blocks - UCT-TM 10 - 0829142

<https://www.phoenixcontact.com/de/produkte/0829142>



Marker for terminal blocks, Sheet, white, unlabeled, can be labeled with: TOPMARK NEO, TOPMARK LASER, BLUEMARK ID COLOR, BLUEMARK ID, BLUEMARK CLED, THERMOMARK PRIME, THERMOMARK CARD 2.0, THERMOMARK CARD, mounting type: snapped, for terminal block width: 10.2 mm, lettering field size: 8.9 x 9.6 mm, Number of individual labels: 36

---

## Marker for terminal blocks

Marker for terminal blocks - UCT-TM 10 CUS - 0829623

<https://www.phoenixcontact.com/de/produkte/0829623>



Marker for terminal blocks, can be ordered: by sheet, white, labeled according to customer specifications, mounting type: snap into tall marker groove, for terminal block width: 10.2 mm, lettering field size: 8.9 x 9.6 mm, Number of individual labels: 36

# Bolt connection terminal block - RBO 16-HC

3247989

<https://www.phoenixcontact.com/de/produkte/3247989>

## Zack Marker strip, flat

Zack Marker strip, flat - ZBF10:UNBEDRUCKT - 0809997

<https://www.phoenixcontact.com/de/produkte/0809997>



Zack Marker strip, flat, Strip, white, unlabeled, can be labeled with: CMS-P1-PLOTTER, PLOTMARK, mounting type: snapped, for terminal block width: 10 mm, lettering field size: 5.15 x 10 mm, Number of individual labels: 10

---

## Zack Marker strip, flat

Zack Marker strip, flat - ZBF10 CUS - 0825031

<https://www.phoenixcontact.com/de/produkte/0825031>



Zack Marker strip, flat, can be ordered: Strip, white, labeled according to customer specifications, mounting type: snap into flat marker groove, for terminal block width: 10 mm, lettering field size: 5.15 x 10 mm, Number of individual labels: 10



# Bolt connection terminal block - RBO 16-HC

3247989

<https://www.phoenixcontact.com/de/produkte/3247989>

## Zack Marker strip, flat

Zack Marker strip, flat - ZBF10,LGS:FORTL.ZAHLEN - 0810009

<https://www.phoenixcontact.com/de/produkte/0810009>



Zack Marker strip, flat, Strip, white, labeled, printed horizontally: consecutive numbers 1 ... 10, 11 ... 20, etc. up to 91 ... 100, mounting type: snapped, for terminal block width: 10 mm, lettering field size: 5.15 x 10 mm, Number of individual labels: 10

---

## Zack Marker strip, flat

Zack Marker strip, flat - ZBF10,QR:FORTL.ZAHLEN - 0810025

<https://www.phoenixcontact.com/de/produkte/0810025>



Zack Marker strip, flat, Strip, white, labeled, Printed vertically: consecutive numbers 1 ... 10, 11 ... 20, etc. up to 91 ... 100, mounting type: snapped, for terminal block width: 10 mm, lettering field size: 5.15 x 10 mm, Number of individual labels: 10

# Bolt connection terminal block - RBO 16-HC

3247989

<https://www.phoenixcontact.com/de/produkte/3247989>

## Marker for terminal blocks

Marker for terminal blocks - UC-TMF 10 - 0818124

<https://www.phoenixcontact.com/de/produkte/0818124>



Marker for terminal blocks, Sheet, white, unlabeled, can be labeled with: BLUEMARK ID COLOR, BLUEMARK ID, BLUEMARK CLED, PLOTMARK, CMS-P1-PLOTTER, mounting type: snapped, for terminal block width: 10.2 mm, lettering field size: 9.6 x 5.1 mm, Number of individual labels: 48

---

## Marker for terminal blocks

Marker for terminal blocks - UC-TMF 10 CUS - 0824662

<https://www.phoenixcontact.com/de/produkte/0824662>



Marker for terminal blocks, can be ordered: by sheet, white, labeled according to customer specifications, mounting type: snap into flat marker groove, for terminal block width: 10.2 mm, lettering field size: 9.6 x 5.1 mm, Number of individual labels: 48

# Bolt connection terminal block - RBO 16-HC

3247989

<https://www.phoenixcontact.com/de/produkte/3247989>

## Marker for terminal blocks

Marker for terminal blocks - UCT-TMF 10 - 0829204

<https://www.phoenixcontact.com/de/produkte/0829204>



Marker for terminal blocks, Sheet, white, unlabeled, can be labeled with: TOPMARK NEO, TOPMARK LASER, BLUEMARK ID COLOR, BLUEMARK ID, BLUEMARK CLED, THERMOMARK PRIME, THERMOMARK CARD 2.0, THERMOMARK CARD, mounting type: snapped, for terminal block width: 10.2 mm, lettering field size: 9.4 x 4.7 mm, Number of individual labels: 36

---

## Marker for terminal blocks

Marker for terminal blocks - UCT-TMF 10 CUS - 0829679

<https://www.phoenixcontact.com/de/produkte/0829679>



Marker for terminal blocks, can be ordered: by sheet, white, labeled according to customer specifications, mounting type: snap into flat marker groove, for terminal block width: 10.2 mm, lettering field size: 9.4 x 4.7 mm, Number of individual labels: 36

# Bolt connection terminal block - RBO 16-HC

3247989

<https://www.phoenixcontact.com/de/produkte/3247989>

## Test plugs

Test plugs - PS-MT - 0311647

<https://www.phoenixcontact.com/de/produkte/0311647>



Test plugs, color: silver

---

## Insulating sleeve

Insulating sleeve - PS-IH WH - 0311566

<https://www.phoenixcontact.com/de/produkte/0311566>



Insulating sleeve, color: white

# Bolt connection terminal block - RBO 16-HC

3247989

<https://www.phoenixcontact.com/de/produkte/3247989>

## Insulating sleeve

Insulating sleeve - PS-IH RD - 0311579

<https://www.phoenixcontact.com/de/produkte/0311579>



Insulating sleeve, color: red

---

## Insulating sleeve

Insulating sleeve - PS-IH BU - 0311582

<https://www.phoenixcontact.com/de/produkte/0311582>



Insulating sleeve, color: blue

# Bolt connection terminal block - RBO 16-HC

3247989

<https://www.phoenixcontact.com/de/produkte/3247989>

## Insulating sleeve

Insulating sleeve - PS-IH YE - 0311595

<https://www.phoenixcontact.com/de/produkte/0311595>



Insulating sleeve, color: yellow

---

## Insulating sleeve

Insulating sleeve - PS-IH GN - 0311605

<https://www.phoenixcontact.com/de/produkte/0311605>



Insulating sleeve, color: green

# Bolt connection terminal block - RBO 16-HC

3247989

<https://www.phoenixcontact.com/de/produkte/3247989>

## Insulating sleeve

Insulating sleeve - PS-IH GY - 0311621

<https://www.phoenixcontact.com/de/produkte/0311621>



Insulating sleeve, color: gray

---

## Insulating sleeve

Insulating sleeve - PS-IH BK - 0311634

<https://www.phoenixcontact.com/de/produkte/0311634>



Insulating sleeve, color: black

# Bolt connection terminal block - RBO 16-HC

3247989

<https://www.phoenixcontact.com/de/produkte/3247989>

## Insulating sleeve

Insulating sleeve - PS-IH VT - 0311618

<https://www.phoenixcontact.com/de/produkte/0311618>



Insulating sleeve, color: violet

---

## Software

Software - PROJECT COMPLETE - 1050453

<https://www.phoenixcontact.com/de/produkte/1050453>



Intuitive planning and marking software for configuring terminal strips and for professional marking of marking materials for terminal blocks, conductors, cables, devices, and systems. The software is available for download

---

Phoenix Contact 2022 © - all rights reserved  
<https://www.phoenixcontact.com>

PHOENIX CONTACT Deutschland GmbH  
Flachsmarktstraße 8  
D-32825 Blomberg  
+49 52 35/3-1 20 00  
[info@phoenixcontact.de](mailto:info@phoenixcontact.de)