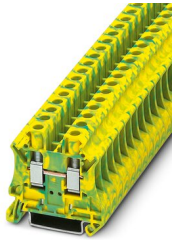


Ground modular terminal block - UT 6-PE

3044157

<https://www.phoenixcontact.com/de/produkte/3044157>

Please be informed that the data shown in this PDF document is generated from our Online Catalog. Please find the complete data in the user documentation. Our General Terms of Use for Downloads are valid.



Ground modular terminal block, number of connections: 2, connection method: Screw connection, cross section: 0.5 mm² - 16 mm², mounting type: NS 35/7,5, NS 35/15, color: green-yellow

Your advantages

- The large wiring space enables the connection of solid and stranded conductors without ferrules, even above the nominal cross section
- As well as saving space, the compact design enables user-friendly wiring in a small amount of space
- Optimum screwdriver guidance through closed screw shafts
- Tested for railway applications
- The cable entry funnel enables the use of conductors with ferrules and plastic collars within the nominal cross section

Ground modular terminal block - UT 6-PE



3044157

<https://www.phoenixcontact.com/de/produkte/3044157>

Commercial Data

Item number	3044157
Packing unit	50 pc
Minimum order quantity	1 pc
Sales Key	A1 - Reihenklennen
Product Key	BE1121
Catalog Page	Page 173 (C-1-2019)
GTIN	4017918960414
Weight per Piece (including packing)	22,1 g
Weight per Piece (excluding packing)	21,6 g
Customs tariff number	85369010
Country of origin	DE

Technical Data

Product properties

Product type	Ground terminal block
Area of application	Railway industry
	Machine building
	Plant engineering
	Process industry
Number of connections	2
Number of rows	1

Insulation characteristics

Overvoltage category	III
Degree of pollution	3

Electrical properties

Rated surge voltage	8 kV
Maximum power dissipation for nominal condition	1.31 W

Connection data

Grounding foot	Yes
Number of connections per level	2
Nominal cross section	6 mm ²
Rated cross section AWG	8

Level 1 above 1 below 1

Screw thread	M4
Note	Please observe the current carrying capacity of the DIN rails.
Tightening torque	1.5 ... 1.8 Nm
Stripping length	10 mm
Internal cylindrical gage	A5
Conductor cross section solid	0.5 mm ² ... 16 mm ²
Cross section AWG	24 ... 8
Conductor cross section flexible	0.2 mm ² ... 10 mm ²
Conductor cross section, flexible [AWG]	24 ... 8
Flexible conductor cross section flexible (ferrule, w/o plastic sleeve)	0.5 mm ² ... 16 mm ²
Flexible conductor cross section (ferrule with plastic sleeve)	0.25 mm ² ... 6 mm ²
Note	Note: Product releases, connection cross sections and notes on connecting aluminum cables can be found in the download area.

Ex data

Rated data (ATEX/IECEx)

ATEX certificate	KEMA 04 ATEX 2048 U
------------------	---------------------

Ground modular terminal block - UT 6-PE



3044157

<https://www.phoenixcontact.com/de/produkte/3044157>

IEC Ex certificate	IECEX KEM 06.0027 U
Identification	□ II 2 GD Ex eb IIC Gb
Operating temperature range	-60 °C ... 110 °C
Ex-certified accessories	3047028 D-UT 2,5/10
	1205066 SZS 1,0X4,0 VDE
	3022276 CLIPFIX 35-5
	3022218 CLIPFIX 35

Ex connection data General

Torque range	1.5 Nm ... 1.8 Nm
Nominal cross section	6 mm ²
Rated cross section AWG	10
Connection capacity rigid	0.2 mm ² ... 10 mm ²
Connection capacity AWG	24 ... 8
Connection capacity flexible	0.2 mm ² ... 6 mm ²
Connection capacity AWG	24 ... 10

Dimensions

Width	8.2 mm
End cover width	2.2 mm
Height	46.9 mm
Height NS 35/15	55 mm
Height NS 35/7,5	47.5 mm
Length	47.7 mm

Material specifications

Color	green-yellow
Flammability rating according to UL 94	V0
Insulating material group	I
Insulating material	PA
Static insulating material application in cold	-60 °C
Temperature index of insulation material (DIN EN 60216-1 (VDE 0304-21))	125 °C
Relative insulation material temperature index (Elec., UL 746 B)	130 °C
Fire protection for rail vehicles (DIN EN 45545-2) R22	HL 1 - HL 3
Fire protection for rail vehicles (DIN EN 45545-2) R23	HL 1 - HL 3
Fire protection for rail vehicles (DIN EN 45545-2) R24	HL 1 - HL 3
Fire protection for rail vehicles (DIN EN 45545-2) R26	HL 1 - HL 3
Calorimetric heat release NFPA 130 (ASTM E 1354)	27,5 MJ/kg
Surface flammability NFPA 130 (ASTM E 162)	passed
Specific optical density of smoke NFPA 130 (ASTM E 662)	passed
Smoke gas toxicity NFPA 130 (SMP 800C)	passed

Mechanical properties

Ground modular terminal block - UT 6-PE



3044157

<https://www.phoenixcontact.com/de/produkte/3044157>

Mechanical data

Open side panel	Yes
-----------------	-----

Environmental and real-life conditions

Oscillation/broadband noise

Specification	DIN EN 50155 (VDE 0115-200):2018-05
Spectrum	Service life test category 2, bogie-mounted
Frequency	$f_1 = 5 \text{ Hz}$ to $f_2 = 250 \text{ Hz}$
ASD level	6.12 (m/s ²)/Hz
Acceleration	3.12g
Test duration per axis	5 h
Test directions	X-, Y- and Z-axis

Shocks

Pulse shape	Half-sine
Acceleration	30g
Shock duration	18 ms
Number of shocks per direction	3
Test directions	X-, Y- and Z-axis (pos. and neg.)

Ambient conditions

Ambient temperature (operation)	-60 °C ... 105 °C (max. short-term operating temperature RTI Elec.)
Ambient temperature (storage/transport)	-25 °C ... 60 °C (for a short time, not exceeding 24 h, -60 °C to +70 °C)
Ambient temperature (assembly)	-5 °C ... 70 °C
Ambient temperature (actuation)	-5 °C ... 70 °C
Permissible humidity (storage/transport)	30 % ... 70 %

Standards and regulations

Connection in acc. with standard	IEC 60947-7-2
----------------------------------	---------------

Mounting

Mounting type	NS 35/7,5
	NS 35/15

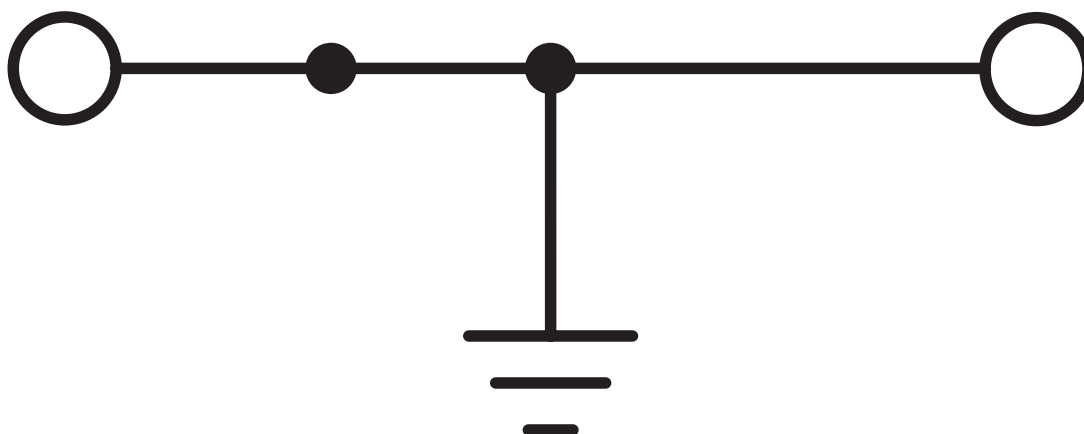
Ground modular terminal block - UT 6-PE

3044157

<https://www.phoenixcontact.com/de/produkte/3044157>

Drawings

Circuit diagram




Ground modular terminal block - UT 6-PE




3044157


<https://www.phoenixcontact.com/de/produkte/3044157>

Approvals

 DNV Approval ID: TAE00001S9				
---	--	--	--	--

 CSA Approval ID: 13631				
	Nominal Voltage U_N	Nominal Current I_N	Cross Section AWG	Cross Section mm^2
Use group B			24 - 8	-
Use group C			24 - 8	-

 IECEE CB Scheme Approval ID: DE1-63045				
	Nominal Voltage U_N	Nominal Current I_N	Cross Section AWG	Cross Section mm^2
			-	-

 cULus Recognized Approval ID: E60425				
	Nominal Voltage U_N	Nominal Current I_N	Cross Section AWG	Cross Section mm^2
Use group B			24 - 8	-
Multi-conductor connection			24 - 12	-
Use group C			24 - 8	-
Multi-conductor connection			24 - 12	-
Use group D			24 - 8	-
Multi-conductor connection			24 - 12	-

 VDE Gutachten mit Fertigungsüberwachung Approval ID: 40013715				
	Nominal Voltage U_N	Nominal Current I_N	Cross Section AWG	Cross Section mm^2
			-	0.2 - 6

 PRS Approval ID: TE/2156/880590/17				
--	--	--	--	--

Ground modular terminal block - UT 6-PE



3044157

<https://www.phoenixcontact.com/de/produkte/3044157>



ATEX

Approval ID: KEMA04ATEX2048U



cUL Recognized

Approval ID: E192998

	Nominal Voltage U_N	Nominal Current I_N	Cross Section AWG	Cross Section mm^2
Use group B			24 - 8	-
Use group C			24 - 8	-



EAC Ex

Approval ID: RU C-DE.HA91.B.00066



IECEx

Approval ID: IECEx KEM 06.0027U



UL Recognized

Approval ID: E192998

	Nominal Voltage U_N	Nominal Current I_N	Cross Section AWG	Cross Section mm^2
Use group B			24 - 8	-
Use group C			24 - 8	-



CCC

Approval ID: 2020322313000622



NEPSI

Approval ID: GYJ20.1194U

cULus Recognized

Ground modular terminal block - UT 6-PE



3044157

<https://www.phoenixcontact.com/de/produkte/3044157>

Classifications

ECLASS

ECLASS-9.0	27141141
ECLASS-10.0.1	27141141
ECLASS-11.0	27141141

ETIM

ETIM 8.0	EC000901
----------	----------

UNSPSC

UNSPSC 21.0	39121400
-------------	----------

Ground modular terminal block - UT 6-PE



3044157

<https://www.phoenixcontact.com/de/produkte/3044157>

Environmental Product Compliance

REACH SVHC	Lead 7439-92-1
China RoHS	Environmentally Friendly Use Period = 50 years
	For information on hazardous substances, refer to the manufacturer's declaration available under "Downloads"

Ground modular terminal block - UT 6-PE

3044157

<https://www.phoenixcontact.com/de/produkte/3044157>

Accessories

Plug-in bridge

Plug-in bridge - FBS 2-8 - 3030284

<https://www.phoenixcontact.com/de/produkte/3030284>



Plug-in bridge, pitch: 8.2 mm, color: red

Plug-in bridge

Plug-in bridge - FBS 3-8 - 3030297

<https://www.phoenixcontact.com/de/produkte/3030297>



Plug-in bridge, pitch: 8.2 mm, color: red

Ground modular terminal block - UT 6-PE

3044157

<https://www.phoenixcontact.com/de/produkte/3044157>

Plug-in bridge

Plug-in bridge - FBS 5-8 - 3030310

<https://www.phoenixcontact.com/de/produkte/3030310>

Plug-in bridge, pitch: 8.2 mm, color: red



Plug-in bridge

Plug-in bridge - FBS 6-8 - 3032470

<https://www.phoenixcontact.com/de/produkte/3032470>

Plug-in bridge, pitch: 8.2 mm, color: red



Ground modular terminal block - UT 6-PE

3044157

<https://www.phoenixcontact.com/de/produkte/3044157>

Plug-in bridge

Plug-in bridge - FBS 10-8 - 3030323

<https://www.phoenixcontact.com/de/produkte/3030323>

Plug-in bridge, pitch: 8.2 mm, color: red



Short-circuit connector

Short-circuit connector - FBSRH 2-8 - 3033802

<https://www.phoenixcontact.com/de/produkte/3033802>

Short-circuit connector, pitch: 8.2 mm, color: red



Ground modular terminal block - UT 6-PE

3044157

<https://www.phoenixcontact.com/de/produkte/3044157>

Short-circuit connector

Short-circuit connector - FBSRH 3-8 - 3033803

<https://www.phoenixcontact.com/de/produkte/3033803>



Short-circuit connector, pitch: 8.2 mm, color: red

Short-circuit connector

Short-circuit connector - FBSRH 4-8 - 3033804

<https://www.phoenixcontact.com/de/produkte/3033804>



Short-circuit connector, pitch: 8.2 mm, color: red

Ground modular terminal block - UT 6-PE

3044157

<https://www.phoenixcontact.com/de/produkte/3044157>

Plug-in bridge

Plug-in bridge - FBSR 2-8 - 3033808

<https://www.phoenixcontact.com/de/produkte/3033808>



Plug-in bridge, pitch: 8.2 mm, color: red

Plug-in bridge

Plug-in bridge - FBSR 3-8 - 3001597

<https://www.phoenixcontact.com/de/produkte/3001597>



Plug-in bridge, pitch: 8.2 mm, color: red

Ground modular terminal block - UT 6-PE

3044157

<https://www.phoenixcontact.com/de/produkte/3044157>

Plug-in bridge

Plug-in bridge - FBSR 4-8 - 3000585

<https://www.phoenixcontact.com/de/produkte/3000585>



Plug-in bridge, pitch: 8.2 mm, color: red

Plug-in bridge

Plug-in bridge - FBSR 5-8 - 3033809

<https://www.phoenixcontact.com/de/produkte/3033809>



Plug-in bridge, pitch: 8.2 mm, color: red

Ground modular terminal block - UT 6-PE

3044157

<https://www.phoenixcontact.com/de/produkte/3044157>

Plug-in bridge

Plug-in bridge - FBSR 10-8 - 3001599

<https://www.phoenixcontact.com/de/produkte/3001599>

Plug-in bridge, pitch: 8.2 mm, color: red



Plug-in bridge

Plug-in bridge - FBS 2-8 CT - 3033830

<https://www.phoenixcontact.com/de/produkte/3033830>

Plug-in bridge, pitch: 8.2 mm, color: orange



Ground modular terminal block - UT 6-PE

3044157

<https://www.phoenixcontact.com/de/produkte/3044157>

Plug-in bridge

Plug-in bridge - FBS 3-8 CT - 3033831

<https://www.phoenixcontact.com/de/produkte/3033831>



Plug-in bridge, pitch: 8.2 mm, color: orange

Plug-in bridge

Plug-in bridge - FBS 4-8 CT - 3033832

<https://www.phoenixcontact.com/de/produkte/3033832>



Plug-in bridge, pitch: 8.2 mm, color: orange

Ground modular terminal block - UT 6-PE

3044157

<https://www.phoenixcontact.com/de/produkte/3044157>

Plug-in bridge

Plug-in bridge - FBS 10-8 CT - 3033833

<https://www.phoenixcontact.com/de/produkte/3033833>



Plug-in bridge, pitch: 8.2 mm, color: orange

Switching jumper

Switching jumper - SB-MER 2-8 - 3000587

<https://www.phoenixcontact.com/de/produkte/3000587>



Switching jumper, pitch: 8.2 mm, color: gray/orange

Ground modular terminal block - UT 6-PE

3044157

<https://www.phoenixcontact.com/de/produkte/3044157>

Switching jumper

Switching jumper - SB-MER 3-8 - 3000588

<https://www.phoenixcontact.com/de/produkte/3000588>



Switching jumper, pitch: 8.2 mm, color: gray/orange

Switching jumper

Switching jumper - SB-MER 4-8 - 3000589

<https://www.phoenixcontact.com/de/produkte/3000589>



Switching jumper, pitch: 8.2 mm, color: gray/orange

Ground modular terminal block - UT 6-PE

3044157

<https://www.phoenixcontact.com/de/produkte/3044157>

Plug-in bridge

Plug-in bridge - FBS 2-8 BU - 3032567

<https://www.phoenixcontact.com/de/produkte/3032567>



Plug-in bridge, pitch: 8.2 mm, color: blue

Plug-in bridge

Plug-in bridge - FBS 3-8 BU - 3032570

<https://www.phoenixcontact.com/de/produkte/3032570>



Plug-in bridge, pitch: 8.2 mm, color: blue

Ground modular terminal block - UT 6-PE

3044157

<https://www.phoenixcontact.com/de/produkte/3044157>

Plug-in bridge

Plug-in bridge - FBS 4-8 BU - 3032583

<https://www.phoenixcontact.com/de/produkte/3032583>



Plug-in bridge, pitch: 8.2 mm, color: blue

Plug-in bridge

Plug-in bridge - FBS 5-8 BU - 3032596

<https://www.phoenixcontact.com/de/produkte/3032596>



Plug-in bridge, pitch: 8.2 mm, color: blue

Ground modular terminal block - UT 6-PE

3044157

<https://www.phoenixcontact.com/de/produkte/3044157>

Plug-in bridge

Plug-in bridge - FBS 6-8 BU - 3032677

<https://www.phoenixcontact.com/de/produkte/3032677>



Plug-in bridge, pitch: 8.2 mm, color: blue

Plug-in bridge

Plug-in bridge - FBS 10-8 BU - 3032606

<https://www.phoenixcontact.com/de/produkte/3032606>



Plug-in bridge, pitch: 8.2 mm, color: blue

Ground modular terminal block - UT 6-PE

3044157

<https://www.phoenixcontact.com/de/produkte/3044157>

End cover

End cover - D-UT 2,5/10 - 3047028

<https://www.phoenixcontact.com/de/produkte/3047028>



End cover, length: 47 mm, width: 2.2 mm, height: 39.8 mm, color: gray

DIN rail perforated

DIN rail perforated - NS 35/ 7,5 PERF 2000MM - 0801733

<https://www.phoenixcontact.com/de/produkte/0801733>



DIN rail perforated, acc. to EN 60715, material: Steel, galvanized, passivated with a thick layer, Standard profile, color: silver, Pack of 25 (50 m)

Ground modular terminal block - UT 6-PE

3044157

<https://www.phoenixcontact.com/de/produkte/3044157>

Partition plate

Partition plate - ATP-UT - 3047167

<https://www.phoenixcontact.com/de/produkte/3047167>



Partition plate, length: 53.4 mm, width: 2.2 mm, height: 45.7 mm, color: gray

DIN rail, unperforated

DIN rail, unperforated - NS 35/ 7,5 UNPERF 2000MM - 0801681

<https://www.phoenixcontact.com/de/produkte/0801681>



DIN rail, unperforated, acc. to EN 60715, material: Steel, galvanized, passivated with a thick layer, Standard profile, color: silver, Pack of 25 (50 m)

Ground modular terminal block - UT 6-PE

3044157

<https://www.phoenixcontact.com/de/produkte/3044157>

Screwdriver

Screwdriver - SZS 1,0X4,0 VDE - 1205066

<https://www.phoenixcontact.com/de/produkte/1205066>



Screwdriver, slot-headed, VDE insulated, size: 1.0 x 4.0 x 100 mm, 2-component grip, with non-slip grip

DIN rail perforated

DIN rail perforated - NS 35/ 7,5 WH PERF 2000MM - 1204119

<https://www.phoenixcontact.com/de/produkte/1204119>



DIN rail perforated, acc. to EN 60715, material: Steel, Galvanized, white passivated, Standard profile, color: silver, Pack of 25 (50 m)

Ground modular terminal block - UT 6-PE

3044157

<https://www.phoenixcontact.com/de/produkte/3044157>

Marker pen

Marker pen - X-PEN 0,35 - 0811228

<https://www.phoenixcontact.com/de/produkte/0811228>



Marker pen without ink cartridge, for manual labeling of markers, labeling extremely wipe-proof, line thickness 0.35 mm

DIN rail, unperforated

DIN rail, unperforated - NS 35/ 7,5 WH UNPERF 2000MM-VPE 10 - 1204122

<https://www.phoenixcontact.com/de/produkte/1204122>



DIN rail, unperforated, acc. to EN 60715, material: Steel, Galvanized, white passivated, Standard profile, color: silver, Pack of 10 (20 m)

Ground modular terminal block - UT 6-PE

3044157

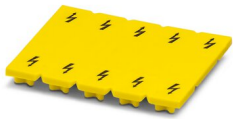
<https://www.phoenixcontact.com/de/produkte/3044157>

Warning label

Warning label - WS UT 6 - 3047345

<https://www.phoenixcontact.com/de/produkte/3047345>

Warning sign for UT terminal blocks



DIN rail, unperforated

DIN rail, unperforated - NS 35/ 7,5 AL UNPERF 2000MM - 0801704

<https://www.phoenixcontact.com/de/produkte/0801704>



DIN rail, unperforated, acc. to EN 60715, material: Aluminum, uncoated, Standard profile, color: silver, Pack of 25 (50 m)

Ground modular terminal block - UT 6-PE

3044157

<https://www.phoenixcontact.com/de/produkte/3044157>

Test adapter

Test adapter - PAI-4 - 3030925

<https://www.phoenixcontact.com/de/produkte/3030925>



Test adapter, Touch proof against unintentional direct contact according to DIN EN 50274 when plugged in, for 4 mm test plug and terminal blocks with 4.2 mm pitch, color: gray

DIN rail perforated

DIN rail perforated - NS 35/ 7,5 ZN PERF 2000MM - 1206421

<https://www.phoenixcontact.com/de/produkte/1206421>



DIN rail perforated, acc. to EN 60715, material: Steel, galvanized, Standard profile, color: silver, Pack of 25 (50 m)

Ground modular terminal block - UT 6-PE

3044157

<https://www.phoenixcontact.com/de/produkte/3044157>

DIN rail, unperforated

DIN rail, unperforated - NS 35/ 7,5 ZN UNPERF 2000MM - 1206434

<https://www.phoenixcontact.com/de/produkte/1206434>



DIN rail, unperforated, acc. to EN 60715, material: Steel, galvanized, Standard profile, color: silver, Pack of 25 (50 m)

DIN rail, unperforated

DIN rail, unperforated - NS 35/ 7,5 CU UNPERF 2000MM-VPE 10 - 0801762

<https://www.phoenixcontact.com/de/produkte/0801762>



DIN rail, unperforated, acc. to EN 60715, material: Copper, uncoated, Standard profile, color: copper-colored, Pack of 10 (20 m)

Ground modular terminal block - UT 6-PE

3044157

<https://www.phoenixcontact.com/de/produkte/3044157>

End cap

End cap - NS 35/ 7,5 CAP - 1206560

<https://www.phoenixcontact.com/de/produkte/1206560>

DIN rail end piece, for DIN rail NS 35/7.5



DIN rail perforated

DIN rail perforated - NS 35/15 PERF 2000MM - 1201730

<https://www.phoenixcontact.com/de/produkte/1201730>



DIN rail perforated, similar to EN 60715, material: Steel, galvanized, passivated with a thick layer, Standard profile, color: silver, Pack of 25 (50 m)

Ground modular terminal block - UT 6-PE

3044157

<https://www.phoenixcontact.com/de/produkte/3044157>

DIN rail, unperforated

DIN rail, unperforated - NS 35/15 UNPERF 2000MM - 1201714

<https://www.phoenixcontact.com/de/produkte/1201714>



DIN rail, unperforated, similar to EN 60715, material: Steel, galvanized, passivated with a thick layer, Standard profile, color: silver, Pack of 25 (50 m)

DIN rail perforated

DIN rail perforated - NS 35/15 WH PERF 2000MM - 0806602

<https://www.phoenixcontact.com/de/produkte/0806602>



DIN rail perforated, similar to EN 60715, material: Steel, Galvanized, white passivated, Standard profile, color: white, Pack of 25 (50 m)

Ground modular terminal block - UT 6-PE

3044157

<https://www.phoenixcontact.com/de/produkte/3044157>

DIN rail, unperforated

DIN rail, unperforated - NS 35/15 WH UNPERF 2000MM-VPE 10 - 1204135

<https://www.phoenixcontact.com/de/produkte/1204135>



DIN rail, unperforated, similar to EN 60715, material: Steel, Galvanized, white passivated, Standard profile, color: silver, Pack of 10 (20 m)

DIN rail, unperforated

DIN rail, unperforated - NS 35/15 AL UNPERF 2000MM - 1201756

<https://www.phoenixcontact.com/de/produkte/1201756>



DIN rail, unperforated, similar to EN 60715, material: Aluminum, uncoated, Standard profile, color: silver

Ground modular terminal block - UT 6-PE

3044157

<https://www.phoenixcontact.com/de/produkte/3044157>

DIN rail perforated

DIN rail perforated - NS 35/15 ZN PERF 2000MM - 1206599

<https://www.phoenixcontact.com/de/produkte/1206599>



DIN rail perforated, similar to EN 60715, material: Steel, galvanized, Standard profile, color: silver, Pack of 25 (50 m)

DIN rail, unperforated

DIN rail, unperforated - NS 35/15 ZN UNPERF 2000MM - 1206586

<https://www.phoenixcontact.com/de/produkte/1206586>



DIN rail, unperforated, similar to EN 60715, material: Steel, galvanized, Standard profile, color: silver, Pack of 25 (50 m)

Ground modular terminal block - UT 6-PE

3044157

<https://www.phoenixcontact.com/de/produkte/3044157>

DIN rail, unperforated

DIN rail, unperforated - NS 35/15 CU UNPERF 2000MM-VPE 10 - 1201895

<https://www.phoenixcontact.com/de/produkte/1201895>



DIN rail, unperforated, similar to EN 60715, material: Copper, uncoated, Standard profile, color: copper-colored, Pack of 10 (20 m)

End cap

End cap - NS 35/15 CAP - 1206573

<https://www.phoenixcontact.com/de/produkte/1206573>

DIN rail end piece, for DIN rail NS 35/15



Ground modular terminal block - UT 6-PE

3044157

<https://www.phoenixcontact.com/de/produkte/3044157>

DIN rail, unperforated

DIN rail, unperforated - NS 35/15-2,3 UNPERF 2000MM-VPE 10 - 1201798

<https://www.phoenixcontact.com/de/produkte/1201798>

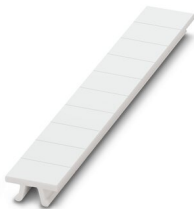


DIN rail, unperforated, acc. to EN 60715, material: Steel, galvanized, passivated with a thick layer, Standard profile 2.3 mm, color: silver, Pack of 10 (20 m)

Zack marker strip

Zack marker strip - ZB 8:UNBEDRUCKT - 1052002

<https://www.phoenixcontact.com/de/produkte/1052002>



Zack marker strip, Strip, white, unlabeled, can be labeled with: CMS-P1-PLOTTER, PLOTMARK, mounting type: snapped, for terminal block width: 8.2 mm, lettering field size: 10.5 x 8.15 mm, Number of individual labels: 10

Ground modular terminal block - UT 6-PE

3044157

<https://www.phoenixcontact.com/de/produkte/3044157>

Zack marker strip

Zack marker strip - ZB 8 CUS - 0825011

<https://www.phoenixcontact.com/de/produkte/0825011>



Zack marker strip, can be ordered: Strip, white, labeled according to customer specifications, mounting type: snap into tall marker groove, for terminal block width: 8.2 mm, lettering field size: 10.5 x 8.15 mm, Number of individual labels: 10

Marker for terminal blocks

Marker for terminal blocks - UC-TM 8 - 0818072

<https://www.phoenixcontact.com/de/produkte/0818072>



Marker for terminal blocks, Sheet, white, unlabeled, can be labeled with: BLUEMARK ID COLOR, BLUEMARK ID, BLUEMARK CLED, PLOTMARK, CMS-P1-PLOTTER, mounting type: snapped, for terminal block width: 8.2 mm, lettering field size: 7.6 x 10.5 mm, Number of individual labels: 56

Ground modular terminal block - UT 6-PE

3044157

<https://www.phoenixcontact.com/de/produkte/3044157>

Marker for terminal blocks

Marker for terminal blocks - UC-TM 8 CUS - 0824597

<https://www.phoenixcontact.com/de/produkte/0824597>



Marker for terminal blocks, can be ordered: by sheet, white, labeled according to customer specifications, mounting type: snap into tall marker groove, for terminal block width: 8.2 mm, lettering field size: 7.6 x 10.5 mm, Number of individual labels: 56

Marker for terminal blocks

Marker for terminal blocks - UCT-TM 8 - 0828740

<https://www.phoenixcontact.com/de/produkte/0828740>



Marker for terminal blocks, Sheet, white, unlabeled, can be labeled with: TOPMARK NEO, TOPMARK LASER, BLUEMARK ID COLOR, BLUEMARK ID, BLUEMARK CLED, THERMOMARK PRIME, THERMOMARK CARD 2.0, THERMOMARK CARD, mounting type: snapped, for terminal block width: 8.2 mm, lettering field size: 7.6 x 10.5 mm, Number of individual labels: 42

Ground modular terminal block - UT 6-PE

3044157

<https://www.phoenixcontact.com/de/produkte/3044157>

Marker for terminal blocks

Marker for terminal blocks - UCT-TM 8 CUS - 0829616

<https://www.phoenixcontact.com/de/produkte/0829616>

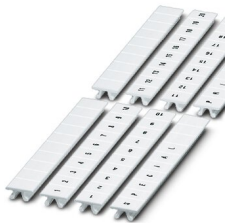


Marker for terminal blocks, can be ordered: by sheet, white, labeled according to customer specifications, mounting type: snap into tall marker groove, for terminal block width: 8.2 mm, lettering field size: 7.6 x 10.5 mm, Number of individual labels: 42

Zack marker strip

Zack marker strip - ZB 8,LGS:FORTL.ZAHLEN - 1052015

<https://www.phoenixcontact.com/de/produkte/1052015>



Zack marker strip, Strip, white, labeled, can be labeled with: CMS-P1-PLOTTER, printed horizontally: consecutive numbers 1 ... 10, 11 ... 20, etc. up to 91 ... 100, mounting type: snapped, for terminal block width: 8.2 mm, lettering field size: 10.5 x 8.15 mm, Number of individual labels: 10

Ground modular terminal block - UT 6-PE

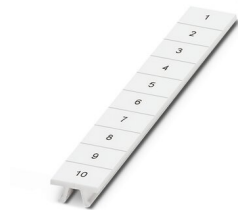
3044157

<https://www.phoenixcontact.com/de/produkte/3044157>

Zack marker strip

Zack marker strip - ZB 8,QR:FORTL.ZAHLEN - 1052028

<https://www.phoenixcontact.com/de/produkte/1052028>

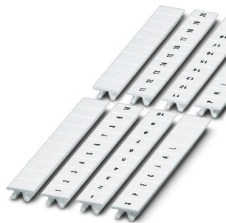


Zack marker strip, Strip, white, labeled, can be labeled with: CMS-P1-PLOTTER, Printed vertically: consecutive numbers 1 ... 10, 11 ... 20, etc. up to 91 ... 100, mounting type: snapped, for terminal block width: 8.2 mm, lettering field size: 10.5 x 8.15 mm, Number of individual labels: 10

Marker for terminal blocks

Marker for terminal blocks - ZB 8,LGS:L1-N,PE - 1052413

<https://www.phoenixcontact.com/de/produkte/1052413>



Marker for terminal blocks, Strip, white, labeled, can be labeled with: CMS-P1-PLOTTER, horizontal: L1, L2, L3, N, PE, L1, L2, L3, N, PE, mounting type: snapped, for terminal block width: 8.2 mm, lettering field size: 10.5 x 8.15 mm, Number of individual labels: 10

Ground modular terminal block - UT 6-PE

3044157

<https://www.phoenixcontact.com/de/produkte/3044157>

Test adapter

Test adapter - PAI-4-FIX BU - 3032729

<https://www.phoenixcontact.com/de/produkte/3032729>



Test adapter, Touch proof against unintentional direct contact according to DIN EN 50274 when plugged in, for 4 mm test plug and terminal blocks with 8.2 mm pitch, color: blue

Test adapter

Test adapter - PAI-4-FIX OG - 3034455

<https://www.phoenixcontact.com/de/produkte/3034455>



4 mm test adapter, for terminal blocks with 8.2 mm pitch

Ground modular terminal block - UT 6-PE

3044157

<https://www.phoenixcontact.com/de/produkte/3044157>

Test adapter

Test adapter - PAI-4-FIX YE - 3032745

<https://www.phoenixcontact.com/de/produkte/3032745>



Test adapter, Touch proof against unintentional direct contact according to DIN EN 50274 when plugged in, for 4 mm test plug and terminal blocks with 8.2 mm pitch, color: yellow

Test adapter

Test adapter - PAI-4-FIX RD - 3032732

<https://www.phoenixcontact.com/de/produkte/3032732>



Test adapter, Touch proof against unintentional direct contact according to DIN EN 50274 when plugged in, for 4 mm test plug and terminal blocks with 8.2 mm pitch, color: red

Ground modular terminal block - UT 6-PE

3044157

<https://www.phoenixcontact.com/de/produkte/3044157>

Test adapter

Test adapter - PAI-4-FIX GN - 3032758

<https://www.phoenixcontact.com/de/produkte/3032758>



Test adapter, Touch proof against unintentional direct contact according to DIN EN 50274 when plugged in, for 4 mm test plug and terminal blocks with 8.2 mm pitch, color: green

Test adapter

Test adapter - PAI-4-FIX BK - 3032774

<https://www.phoenixcontact.com/de/produkte/3032774>



Test adapter, Touch proof against unintentional direct contact according to DIN EN 50274 when plugged in, for 4 mm test plug and terminal blocks with 8.2 mm pitch, color: black

Ground modular terminal block - UT 6-PE

3044157

<https://www.phoenixcontact.com/de/produkte/3044157>

Test adapter

Test adapter - PAI-4-FIX GY - 3032790

<https://www.phoenixcontact.com/de/produkte/3032790>



Test adapter, Touch proof against unintentional direct contact according to DIN EN 50274 when plugged in, for 4 mm test plug and terminal blocks with 8.2 mm pitch, color: gray

Test adapter

Test adapter - PAI-4-FIX VT - 3032761

<https://www.phoenixcontact.com/de/produkte/3032761>



Test adapter, Touch proof against unintentional direct contact according to DIN EN 50274 when plugged in, for 4 mm test plug and terminal blocks with 4.2 mm .. 8.2 mm pitch, color: violet

Ground modular terminal block - UT 6-PE

3044157

<https://www.phoenixcontact.com/de/produkte/3044157>

Test adapter

Test adapter - PAI-4-FIX BN - 3032787

<https://www.phoenixcontact.com/de/produkte/3032787>



Test adapter, Touch proof against unintentional direct contact according to DIN EN 50274 when plugged in, for 4 mm test plug and terminal blocks with 8.2 mm pitch, color: brown

Test adapter

Test adapter - PAI-4-FIX WH - 3032797

<https://www.phoenixcontact.com/de/produkte/3032797>



4 mm test adapter, for terminal blocks with 8.2 mm pitch

Ground modular terminal block - UT 6-PE

3044157

<https://www.phoenixcontact.com/de/produkte/3044157>

Test adapter

Test adapter - PAIS-4-FIX GY - 3032791

<https://www.phoenixcontact.com/de/produkte/3032791>



Test adapter, Touch proof against unintentional direct contact according to DIN EN 50274 when plugged in, for 4 mm test plug and terminal blocks with 5.2 mm, 6.2 mm, and 8.2 mm pitch, color: gray

Test adapter

Test adapter - PAIS-4-FIX BK - 3032792

<https://www.phoenixcontact.com/de/produkte/3032792>



Test adapter, Touch proof against unintentional direct contact according to DIN EN 50274 when plugged in, for 4 mm test plug and terminal blocks with 5.2 mm, 6.2 mm, and 8.2 mm pitch, color: black

Ground modular terminal block - UT 6-PE

3044157

<https://www.phoenixcontact.com/de/produkte/3044157>

Test adapter

Test adapter - PAIS-4-FIX RD - 3032793

<https://www.phoenixcontact.com/de/produkte/3032793>



Test adapter, Do not plug in while the power is connected, for 4 mm test plug and terminal blocks with 5.2 mm, 6.2 mm, and 8.2 mm pitch, color: red

Test adapter

Test adapter - PAIS-4-FIX BU - 3032798

<https://www.phoenixcontact.com/de/produkte/3032798>



Test adapter, Touch proof against unintentional direct contact according to DIN EN 50274 when plugged in, for 4 mm test plug and terminal blocks with 5.2 mm, 6.2 mm, and 8.2 mm pitch, color: blue

Ground modular terminal block - UT 6-PE

3044157

<https://www.phoenixcontact.com/de/produkte/3044157>

Test adapter

Test adapter - PAIS-4-FIX YE - 3032799

<https://www.phoenixcontact.com/de/produkte/3032799>



Test adapter, Touch proof against unintentional direct contact according to DIN EN 50274 when plugged in, for 4 mm test plug and terminal blocks with 5.2 mm, 6.2 mm, and 8.2 mm pitch, color: yellow

Test adapter

Test adapter - PAIS-4-FIX GN - 3032801

<https://www.phoenixcontact.com/de/produkte/3032801>



Test adapter, Touch proof against unintentional direct contact according to DIN EN 50274 when plugged in, for 4 mm test plug and terminal blocks with 5.2 mm, 6.2 mm, and 8.2 mm pitch, color: green

Ground modular terminal block - UT 6-PE

3044157

<https://www.phoenixcontact.com/de/produkte/3044157>

Test adapter

Test adapter - PAIS-4-FIX VT - 3032802

<https://www.phoenixcontact.com/de/produkte/3032802>



Test adapter, Touch proof against unintentional direct contact according to DIN EN 50274 when plugged in, for 4 mm test plug and terminal blocks with 5.2 mm, 6.2 mm, and 8.2 mm pitch, color: violet

Test plugs

Test plugs - PS-8 - 3031005

<https://www.phoenixcontact.com/de/produkte/3031005>



Test plugs, Modular test plug, color: red

Ground modular terminal block - UT 6-PE

3044157

<https://www.phoenixcontact.com/de/produkte/3044157>

Spacer plate

Spacer plate - DP PS-8 - 3036741

<https://www.phoenixcontact.com/de/produkte/3036741>



Spacer plate, length: 22.4 mm, width: 8.2 mm, height: 29 mm, number of positions: 1, color: red

Test plugs

Test plugs - PS-8/2,3MM RD - 3048564

<https://www.phoenixcontact.com/de/produkte/3048564>



Test plugs, color: red

Ground modular terminal block - UT 6-PE

3044157

<https://www.phoenixcontact.com/de/produkte/3044157>

Software

Software - PROJECT COMPLETE - 1050453

<https://www.phoenixcontact.com/de/produkte/1050453>



Intuitive planning and marking software for configuring terminal strips and for professional marking of marking materials for terminal blocks, conductors, cables, devices, and systems. The software is available for download

End clamp

End clamp - CLIPFIX 35 - 3022218

<https://www.phoenixcontact.com/de/produkte/3022218>



Quick mounting end clamp for NS 35/7,5 DIN rail or NS 35/15 DIN rail, with marking option, width: 9.5 mm, color: gray

Ground modular terminal block - UT 6-PE

3044157

<https://www.phoenixcontact.com/de/produkte/3044157>

End clamp

End clamp - CLIPFIX 35-5 - 3022276

<https://www.phoenixcontact.com/de/produkte/3022276>

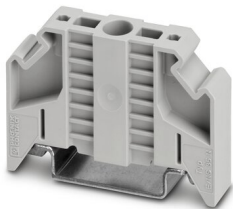


Quick mounting end clamp for NS 35/7,5 DIN rail or NS 35/15 DIN rail, with marking option, with parking option for FBS...5, FBS...6, KSS 5, KSS 6, width: 5.15 mm, color: gray

End clamp

End clamp - E/NS 35 N - 0800886

<https://www.phoenixcontact.com/de/produkte/0800886>



End clamp, width: 9.5 mm, color: gray

Ground modular terminal block - UT 6-PE

3044157

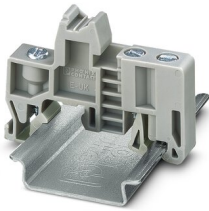
<https://www.phoenixcontact.com/de/produkte/3044157>

End clamp

End clamp - E/UK - 1201442

<https://www.phoenixcontact.com/de/produkte/1201442>

End clamp, material: PA, color: gray, Mounting on a DIN rail NS 32 or NS 35



End clamp

End clamp - E/UK 1 - 1201413

<https://www.phoenixcontact.com/de/produkte/1201413>

End clamps, for supporting the ends of double-level and three-level terminal blocks, width: 10 mm, color: gray



Phoenix Contact 2022 © - all rights reserved
<https://www.phoenixcontact.com>

PHOENIX CONTACT Deutschland GmbH
Flachsmarktstraße 8
D-32825 Blomberg
+49 52 35/3-1 20 00
info@phoenixcontact.de