

# Fuse modular terminal block - UK 10-DREHSILED 24 (5X20)



3005138

<https://www.phoenixcontact.com/de/produkte/3005138>

Please be informed that the data shown in this PDF document is generated from our Online Catalog. Please find the complete data in the user documentation. Our General Terms of Use for Downloads are valid.

---



Fuse terminal block for cartridge fuse insert, cross section: 0.5 - 16 mm<sup>2</sup>, AWG: 24 - 6, width: 12 mm, color: black

---

## Your advantages

- Can be bridged with FBI ... fixed bridge

# Fuse modular terminal block - UK 10-DREHSILED 24 (5X20)



3005138

<https://www.phoenixcontact.com/de/produkte/3005138>

## Commercial Data

Item number	3005138
Packing unit	50 pc
Minimum order quantity	1 pc
Sales Key	A1 - Reihenklemmen
Product Key	BE1235
Catalog Page	Page 496 (C-1-2019)
GTIN	4017918091071
Weight per Piece (including packing)	34,4 g
Weight per Piece (excluding packing)	34,4 g
Customs tariff number	85369095
Country of origin	PL

# Fuse modular terminal block - UK 10-DREHSILED 24 (5X20)



3005138

<https://www.phoenixcontact.com/de/produkte/3005138>

## Technical Data

### Product properties

Product type	Fuse terminal block
Number of positions	1
Number of connections	2
Number of rows	1
Potentials	1

### Insulation characteristics

Overvoltage category	III
Degree of pollution	3

### Electrical properties

Fuse type	Glass / ceramics / ...
Rated surge voltage	4 kV
Maximum power dissipation for nominal condition	2.43 W
Fuse	G / 5 x 20
LED voltage range	15 V AC/DC ... 30 V AC/DC
LED current range	1 mA ... 2.5 mA

### Input data

LED voltage range	15 V AC/DC ... 30 V AC/DC
-------------------	---------------------------

### Connection data

Number of connections per level	2
Nominal cross section	16 mm <sup>2</sup>

### Level 1 above 1 below 1

Screw thread	M4
Tightening torque	1.5 ... 1.8 Nm
Stripping length	11 mm
Internal cylindrical gage	B6
Conductor cross section solid	0.5 mm <sup>2</sup> ... 16 mm <sup>2</sup>
Cross section AWG	20 ... 6
Conductor cross section flexible	0.5 mm <sup>2</sup> ... 16 mm <sup>2</sup>
Conductor cross section, flexible [AWG]	20 ... 6
Flexible conductor cross section flexible (ferrule, w/o plastic sleeve)	0.5 mm <sup>2</sup> ... 10 mm <sup>2</sup>
Flexible conductor cross section (ferrule with plastic sleeve)	0.5 mm <sup>2</sup> ... 10 mm <sup>2</sup>
Cross-section with insertion bridge, rigid	10 mm <sup>2</sup>
Cross-section with insertion bridge, flexible	10 mm <sup>2</sup>
2 conductors with same cross section, solid	0.5 mm <sup>2</sup> ... 4 mm <sup>2</sup>
2 conductors with same cross section, flexible	0.5 mm <sup>2</sup> ... 4 mm <sup>2</sup>
2 conductors with same cross section, flexible, with ferrule	0.5 mm <sup>2</sup> ... 4 mm <sup>2</sup>

# Fuse modular terminal block - UK 10-DREHSILED 24 (5X20)



3005138

<https://www.phoenixcontact.com/de/produkte/3005138>

without plastic sleeve	
2 conductors with the same cross section, flexible, with TWIN ferrule with plastic sleeve	0.5 mm <sup>2</sup> ... 10 mm <sup>2</sup>
Nominal current	10 A
Maximum load current	10 A
Nominal voltage	500 V 800 V (As a disconnect terminal block)
Nominal cross section	1.5 mm <sup>2</sup>

## Dimensions

Width	12 mm
Height NS 35/15	64.7 mm
Height NS 35/7,5	57.2 mm
Height	2.323 "
Height NS 32	62.2 mm
Length	62 mm

## Material specifications

Color	black
Flammability rating according to UL 94	V0
Insulating material group	I
Insulating material	PA
Static insulating material application in cold	-60 °C
Temperature index of insulation material (DIN EN 60216-1 (VDE 0304-21))	130 °C
Relative insulation material temperature index (Elec., UL 746 B)	130 °C
Fire protection for rail vehicles (DIN EN 45545-2) R22	HL 1 - HL 3
Fire protection for rail vehicles (DIN EN 45545-2) R23	HL 1 - HL 3
Fire protection for rail vehicles (DIN EN 45545-2) R24	HL 1 - HL 3
Fire protection for rail vehicles (DIN EN 45545-2) R26	HL 1 - HL 3
Calorimetric heat release NFPA 130 (ASTM E 1354)	28 MJ/kg
Surface flammability NFPA 130 (ASTM E 162)	passed
Specific optical density of smoke NFPA 130 (ASTM E 662)	passed
Smoke gas toxicity NFPA 130 (SMP 800C)	passed

## Mechanical properties

### Mechanical data

Open side panel	No
-----------------	----

## Environmental and real-life conditions

### Oscillation/broadband noise

Specification	DIN EN 50155 (VDE 0115-200):2008-03
Spectrum	Service life test category 1, class B, body mounted
Frequency	f <sub>1</sub> = 5 Hz to f <sub>2</sub> = 150 Hz

# Fuse modular terminal block - UK 10-DREHSILED 24 (5X20)



3005138

<https://www.phoenixcontact.com/de/produkte/3005138>

ASD level	1.857 (m/s <sup>2</sup> )/Hz
Acceleration	0.8g
Test duration per axis	5 h
Test directions	X-, Y- and Z-axis
Result	Test passed

## Shocks

Specification	DIN EN 50155 (VDE 0115-200):2008-03
Pulse shape	Half-sine
Acceleration	5g
Shock duration	30 ms
Number of shocks per direction	3
Test directions	X-, Y- and Z-axis (pos. and neg.)
Result	Test passed

## Ambient conditions

Ambient temperature (operation)	-60 °C ... 105 °C (max. short-term operating temperature RTI Elec.)
Ambient temperature (storage/transport)	-25 °C ... 60 °C (for a short time, not exceeding 24 h, -60 °C to +70 °C)
Ambient temperature (assembly)	-5 °C ... 70 °C
Ambient temperature (actuation)	-5 °C ... 70 °C
Permissible humidity (storage/transport)	30 % ... 70 %

## Standards and regulations

Connection in acc. with standard	IEC 60947-7-3
----------------------------------	---------------

## Mounting

Mounting type	NS 35/7,5
	NS 35/15
	NS 32

# Fuse modular terminal block - UK 10-DREHSILED 24 (5X20)





3005138

<https://www.phoenixcontact.com/de/produkte/3005138>

## Approvals

 <b>IECEE CB Scheme</b> Approval ID: NL-56826/A1				
	Nominal Voltage $U_N$	Nominal Current $I_N$	Cross Section AWG	Cross Section $\text{mm}^2$
	800 V		-	0.5 - 16

 <b>EAC</b> Approval ID: RU C-DE.BL08.B.00534				
---	--	--	--	--

 <b>cULus Recognized</b> Approval ID: E60425				
	Nominal Voltage $U_N$	Nominal Current $I_N$	Cross Section AWG	Cross Section $\text{mm}^2$
Use group B	300 V	20 A	24 - 6	-
Use group C	300 V	20 A	24 - 6	-
Use group F	500 V	20 A	24 - 6	-

 <b>KEMA-KEUR</b> Approval ID: 71-119846				
	Nominal Voltage $U_N$	Nominal Current $I_N$	Cross Section AWG	Cross Section $\text{mm}^2$
		10 A	-	0.5 - 16

# Fuse modular terminal block - UK 10-DREHSILED 24 (5X20)



3005138

<https://www.phoenixcontact.com/de/produkte/3005138>

## Classifications

### ECLASS

ECLASS-9.0	27141116
ECLASS-10.0.1	27141116
ECLASS-11.0	27141116

### ETIM

ETIM 8.0	EC000899
----------	----------

### UNSPSC

UNSPSC 21.0	39121400
-------------	----------

# Fuse modular terminal block - UK 10-DREHSILED 24 (5X20)



3005138

<https://www.phoenixcontact.com/de/produkte/3005138>

## Environmental Product Compliance

REACH SVHC	Lead 7439-92-1
China RoHS	Environmentally Friendly Use Period = 50 years
	For information on hazardous substances, refer to the manufacturer's declaration available under "Downloads"




# Fuse modular terminal block - UK 10-DREHSILED 24 (5X20)

3005138

<https://www.phoenixcontact.com/de/produkte/3005138>

## Accessories

 Note: Applying some accessories below might limit this product.


### Fixed bridge

Fixed bridge - FBI 10-12 - 0203454

<https://www.phoenixcontact.com/de/produkte/0203454>



Fixed bridge, pitch: 12 mm, color: silver

 Max. current carrying capacity: 63 A

---

### Fixed bridge

Fixed bridge - FBI 2-12 - 0200075

<https://www.phoenixcontact.com/de/produkte/0200075>



Fixed bridge, pitch: 12 mm, color: silver

# Fuse modular terminal block - UK 10-DREHSILED 24 (5X20)

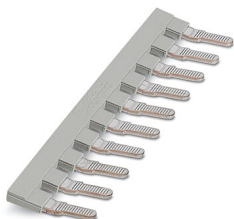
3005138

<https://www.phoenixcontact.com/de/produkte/3005138>


## Insertion bridge

Insertion bridge - EB 10-12 - 3006137

<https://www.phoenixcontact.com/de/produkte/3006137>



Insertion bridge, pitch: 12 mm, color: gray

 Max. current carrying capacity: 63 A

---

## Screwdriver

Screwdriver - SZS 1,0X4,0 VDE - 1205066

<https://www.phoenixcontact.com/de/produkte/1205066>



Screwdriver, slot-headed, VDE insulated, size: 1.0 x 4.0 x 100 mm, 2-component grip, with non-slip grip

# Fuse modular terminal block - UK 10-DREHSILED 24 (5X20)

3005138

<https://www.phoenixcontact.com/de/produkte/3005138>

## DIN rail perforated

DIN rail perforated - NS 32 PERF 2000MM-VPE 10 - 1201002

<https://www.phoenixcontact.com/de/produkte/1201002>



DIN rail perforated, acc. to EN 60715, material: Steel, galvanized, passivated with a thick layer, G profile, color: silver, Pack of 10 (20 m)

---

## Fuse holder

Fuse holder - FUSE CAP (5X20)-DREHSI - 1006736

<https://www.phoenixcontact.com/de/produkte/1006736>



Fuse holder, sleeve length: 13.2 mm, length: 22.5 mm, diameter: 11 mm, color: black

# Fuse modular terminal block - UK 10-DREHSILED 24 (5X20)

3005138

<https://www.phoenixcontact.com/de/produkte/3005138>

## DIN rail, unperforated

DIN rail, unperforated - NS 32 UNPERF 2000MM-VPE 10 - 1201015

<https://www.phoenixcontact.com/de/produkte/1201015>



DIN rail, unperforated, acc. to EN 60715, material: Steel, galvanized, passivated with a thick layer, G profile, color: silver, Pack of 10 (20 m)

---

## DIN rail perforated

DIN rail perforated - NS 35/ 7,5 PERF 2000MM - 0801733

<https://www.phoenixcontact.com/de/produkte/0801733>



DIN rail perforated, acc. to EN 60715, material: Steel, galvanized, passivated with a thick layer, Standard profile, color: silver, Pack of 25 (50 m)

# Fuse modular terminal block - UK 10-DREHSILED 24 (5X20)

3005138

<https://www.phoenixcontact.com/de/produkte/3005138>

## DIN rail, unperforated

DIN rail, unperforated - NS 35/ 7,5 UNPERF 2000MM - 0801681

<https://www.phoenixcontact.com/de/produkte/0801681>



DIN rail, unperforated, acc. to EN 60715, material: Steel, galvanized, passivated with a thick layer, Standard profile, color: silver, Pack of 25 (50 m)

---

## DIN rail perforated

DIN rail perforated - NS 35/ 7,5 WH PERF 2000MM - 1204119

<https://www.phoenixcontact.com/de/produkte/1204119>



DIN rail perforated, acc. to EN 60715, material: Steel, Galvanized, white passivated, Standard profile, color: silver, Pack of 25 (50 m)

# Fuse modular terminal block - UK 10-DREHSILED 24 (5X20)

3005138

<https://www.phoenixcontact.com/de/produkte/3005138>

## DIN rail, unperforated

DIN rail, unperforated - NS 35/ 7,5 WH UNPERF 2000MM-VPE 10 - 1204122

<https://www.phoenixcontact.com/de/produkte/1204122>



DIN rail, unperforated, acc. to EN 60715, material: Steel, Galvanized, white passivated, Standard profile, color: silver, Pack of 10 (20 m)

---

## DIN rail, unperforated

DIN rail, unperforated - NS 35/ 7,5 AL UNPERF 2000MM - 0801704

<https://www.phoenixcontact.com/de/produkte/0801704>



DIN rail, unperforated, acc. to EN 60715, material: Aluminum, uncoated, Standard profile, color: silver, Pack of 25 (50 m)

# Fuse modular terminal block - UK 10-DREHSILED 24 (5X20)

3005138

<https://www.phoenixcontact.com/de/produkte/3005138>

## DIN rail perforated

DIN rail perforated - NS 35/ 7,5 ZN PERF 2000MM - 1206421

<https://www.phoenixcontact.com/de/produkte/1206421>



DIN rail perforated, acc. to EN 60715, material: Steel, galvanized, Standard profile, color: silver, Pack of 25 (50 m)

---

## DIN rail, unperforated

DIN rail, unperforated - NS 35/ 7,5 ZN UNPERF 2000MM - 1206434

<https://www.phoenixcontact.com/de/produkte/1206434>



DIN rail, unperforated, acc. to EN 60715, material: Steel, galvanized, Standard profile, color: silver, Pack of 25 (50 m)

# Fuse modular terminal block - UK 10-DREHSILED 24 (5X20)

3005138

<https://www.phoenixcontact.com/de/produkte/3005138>

## DIN rail, unperforated

DIN rail, unperforated - NS 35/ 7,5 CU UNPERF 2000MM-VPE 10 - 0801762

<https://www.phoenixcontact.com/de/produkte/0801762>



DIN rail, unperforated, acc. to EN 60715, material: Copper, uncoated, Standard profile, color: copper-colored, Pack of 10 (20 m)

---

## End cap

End cap - NS 35/ 7,5 CAP - 1206560

<https://www.phoenixcontact.com/de/produkte/1206560>

DIN rail end piece, for DIN rail NS 35/7.5





# Fuse modular terminal block - UK 10-DREHSEILED 24 (5X20)

3005138

<https://www.phoenixcontact.com/de/produkte/3005138>

## DIN rail perforated

DIN rail perforated - NS 35/15 PERF 2000MM - 1201730

<https://www.phoenixcontact.com/de/produkte/1201730>



DIN rail perforated, similar to EN 60715, material: Steel, galvanized, passivated with a thick layer, Standard profile, color: silver, Pack of 25 (50 m)

---

## DIN rail, unperforated

DIN rail, unperforated - NS 35/15 UNPERF 2000MM - 1201714

<https://www.phoenixcontact.com/de/produkte/1201714>



DIN rail, unperforated, similar to EN 60715, material: Steel, galvanized, passivated with a thick layer, Standard profile, color: silver, Pack of 25 (50 m)

# Fuse modular terminal block - UK 10-DREHSILED 24 (5X20)

3005138

<https://www.phoenixcontact.com/de/produkte/3005138>

## DIN rail perforated

DIN rail perforated - NS 35/15 WH PERF 2000MM - 0806602

<https://www.phoenixcontact.com/de/produkte/0806602>



DIN rail perforated, similar to EN 60715, material: Steel, Galvanized, white passivated, Standard profile, color: white, Pack of 25 (50 m)

---

## DIN rail, unperforated

DIN rail, unperforated - NS 35/15 WH UNPERF 2000MM-VPE 10 - 1204135

<https://www.phoenixcontact.com/de/produkte/1204135>



DIN rail, unperforated, similar to EN 60715, material: Steel, Galvanized, white passivated, Standard profile, color: silver, Pack of 10 (20 m)

# Fuse modular terminal block - UK 10-DREHSEILED 24 (5X20)

3005138

<https://www.phoenixcontact.com/de/produkte/3005138>

## DIN rail, unperforated

DIN rail, unperforated - NS 35/15 AL UNPERF 2000MM - 1201756

<https://www.phoenixcontact.com/de/produkte/1201756>



DIN rail, unperforated, similar to EN 60715, material: Aluminum, uncoated, Standard profile, color: silver

---

## DIN rail perforated

DIN rail perforated - NS 35/15 ZN PERF 2000MM - 1206599

<https://www.phoenixcontact.com/de/produkte/1206599>



DIN rail perforated, similar to EN 60715, material: Steel, galvanized, Standard profile, color: silver, Pack of 25 (50 m)

# Fuse modular terminal block - UK 10-DREHSEILED 24 (5X20)

3005138

<https://www.phoenixcontact.com/de/produkte/3005138>

## DIN rail, unperforated

DIN rail, unperforated - NS 35/15 ZN UNPERF 2000MM - 1206586

<https://www.phoenixcontact.com/de/produkte/1206586>



DIN rail, unperforated, similar to EN 60715, material: Steel, galvanized, Standard profile, color: silver, Pack of 25 (50 m)

---

## DIN rail, unperforated

DIN rail, unperforated - NS 35/15 CU UNPERF 2000MM-VPE 10 - 1201895

<https://www.phoenixcontact.com/de/produkte/1201895>



DIN rail, unperforated, similar to EN 60715, material: Copper, uncoated, Standard profile, color: copper-colored, Pack of 10 (20 m)

# Fuse modular terminal block - UK 10-DREHSILED 24 (5X20)

3005138

<https://www.phoenixcontact.com/de/produkte/3005138>

## End cap

End cap - NS 35/15 CAP - 1206573

<https://www.phoenixcontact.com/de/produkte/1206573>

DIN rail end piece, for DIN rail NS 35/15



---

## DIN rail, unperforated

DIN rail, unperforated - NS 35/15-2,3 UNPERF 2000MM-VPE 10 - 1201798

<https://www.phoenixcontact.com/de/produkte/1201798>



DIN rail, unperforated, acc. to EN 60715, material: Steel, galvanized, passivated with a thick layer, Standard profile 2.3 mm, color: silver, Pack of 10 (20 m)

# Fuse modular terminal block - UK 10-DREHSEILED 24 (5X20)

3005138

<https://www.phoenixcontact.com/de/produkte/3005138>

## Zack marker strip

Zack marker strip - ZB 6:UNBEDRUCKT - 1051003

<https://www.phoenixcontact.com/de/produkte/1051003>



Zack marker strip, Strip, white, unlabeled, can be labeled with: PLOTMARK, CMS-P1-PLOTTER, mounting type: snapped, for terminal block width: 6.2 mm, lettering field size: 6.15 x 10.5 mm, Number of individual labels: 10

---

## Zack marker strip

Zack marker strip - ZB 6 CUS - 0824992

<https://www.phoenixcontact.com/de/produkte/0824992>



Zack marker strip, can be ordered: Strip, white, labeled according to customer specifications, mounting type: snap into tall marker groove, for terminal block width: 6.2 mm, lettering field size: 6.15 x 10.5 mm, Number of individual labels: 10

# Fuse modular terminal block - UK 10-DREHSILED 24 (5X20)

3005138

<https://www.phoenixcontact.com/de/produkte/3005138>

## Zack marker strip

Zack marker strip - ZB 6,LGS:FORTL.ZAHLEN - 1051016

<https://www.phoenixcontact.com/de/produkte/1051016>



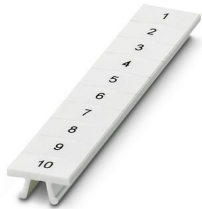
Zack marker strip, Strip, white, labeled, can be labeled with: CMS-P1-PLOTTER, printed horizontally: consecutive numbers 1 ... 10, 11 ... 20, etc. up to 491 ... 500, mounting type: snapped, for terminal block width: 6.2 mm, lettering field size: 6. 15 x 10.5 mm, Number of individual labels: 10

---

## Zack marker strip

Zack marker strip - ZB 6,QR:FORTL.ZAHLEN - 1051029

<https://www.phoenixcontact.com/de/produkte/1051029>



Zack marker strip, Strip, white, labeled, can be labeled with: CMS-P1-PLOTTER, Printed vertically: consecutive numbers 1 ... 10, 11 ... 20, etc. up to 491 ... 500, mounting type: snapped, for terminal block width: 6.2 mm, lettering field size: 6. 15 x 10.5 mm, Number of individual labels: 10

# Fuse modular terminal block - UK 10-DREHSILED 24 (5X20)

3005138

<https://www.phoenixcontact.com/de/produkte/3005138>

## Zack marker strip

Zack marker strip - ZB 6,LGS:GLEICHE ZAHLEN - 1051032

<https://www.phoenixcontact.com/de/produkte/1051032>



Zack marker strip, Strip, white, labeled, can be labeled with: CMS-P1-PLOTTER, printed horizontally: Identical numbers 1 or 2, etc. up to 100, mounting type: snapped, for terminal block width: 6.2 mm, lettering field size: 6.15 x 10.5 mm, Number of individual labels: 10

---

## Marker for terminal blocks

Marker for terminal blocks - ZB 6,LGS:L1-N,PE - 1051414

<https://www.phoenixcontact.com/de/produkte/1051414>



Marker for terminal blocks, Strip, white, labeled, can be labeled with: CMS-P1-PLOTTER, horizontal: L1, L2, L3, N, PE, L1, L2, L3, N, PE, mounting type: snapped, for terminal block width: 6.2 mm, lettering field size: 6.15 x 10.5 mm, Number of individual labels: 10



# Fuse modular terminal block - UK 10-DREHSILED 24 (5X20)

3005138

<https://www.phoenixcontact.com/de/produkte/3005138>

## Marker for terminal blocks

Marker for terminal blocks - ZB 6,LGS:U-N - 1051430

<https://www.phoenixcontact.com/de/produkte/1051430>



Marker for terminal blocks, Strip, white, labeled, can be labeled with: CMS-P1-PLOTTER, printed horizontally: U, V, W, N, GND, U, V, W, N, GND, mounting type: snapped, for terminal block width: 6.2 mm, lettering field size: 6.15 x 10.5 mm, Number of individual labels: 10

---

## Marker for terminal blocks

Marker for terminal blocks - UC-TM 6 - 0818085

<https://www.phoenixcontact.com/de/produkte/0818085>



Marker for terminal blocks, Sheet, white, unlabeled, can be labeled with: BLUEMARK ID COLOR, BLUEMARK ID, BLUEMARK CLED, PLOTMARK, CMS-P1-PLOTTER, mounting type: snapped, for terminal block width: 6.2 mm, lettering field size: 5.6 x 10.5 mm, Number of individual labels: 80

# Fuse modular terminal block - UK 10-DREHSILED 24 (5X20)

3005138

<https://www.phoenixcontact.com/de/produkte/3005138>

## Marker for terminal blocks

Marker for terminal blocks - UC-TM 6 CUS - 0824589

<https://www.phoenixcontact.com/de/produkte/0824589>



Marker for terminal blocks, can be ordered: by sheet, white, labeled according to customer specifications, mounting type: snap into tall marker groove, for terminal block width: 6.2 mm, lettering field size: 5.6 x 10.5 mm, Number of individual labels: 80

---

## Marker for terminal blocks

Marker for terminal blocks - UCT-TM 6 - 0828736

<https://www.phoenixcontact.com/de/produkte/0828736>



Marker for terminal blocks, Sheet, white, unlabeled, can be labeled with: TOPMARK NEO, TOPMARK LASER, BLUEMARK ID COLOR, BLUEMARK ID, BLUEMARK CLED, THERMOMARK PRIME, THERMOMARK CARD 2.0, THERMOMARK CARD, mounting type: snapped, for terminal block width: 6.2 mm, lettering field size: 5.6 x 10.5 mm, Number of individual labels: 60

# Fuse modular terminal block - UK 10-DREHSILED 24 (5X20)

3005138

<https://www.phoenixcontact.com/de/produkte/3005138>

## Marker for terminal blocks

Marker for terminal blocks - UCT-TM 6 CUS - 0829602

<https://www.phoenixcontact.com/de/produkte/0829602>



Marker for terminal blocks, can be ordered: by sheet, white, labeled according to customer specifications, mounting type: snap into tall marker groove, for terminal block width: 6.2 mm, lettering field size: 5.6 x 10.5 mm, Number of individual labels: 60

---

## End clamp

End clamp - CLIPFIX 35 - 3022218

<https://www.phoenixcontact.com/de/produkte/3022218>



Quick mounting end clamp for NS 35/7,5 DIN rail or NS 35/15 DIN rail, with marking option, width: 9.5 mm, color: gray

# Fuse modular terminal block - UK 10-DREHSEILED 24 (5X20)

3005138

<https://www.phoenixcontact.com/de/produkte/3005138>

## End clamp

End clamp - CLIPFIX 35-5 - 3022276

<https://www.phoenixcontact.com/de/produkte/3022276>



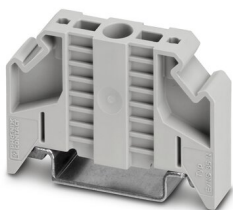
Quick mounting end clamp for NS 35/7,5 DIN rail or NS 35/15 DIN rail, with marking option, with parking option for FBS...5, FBS...6, KSS 5, KSS 6, width: 5.15 mm, color: gray

---

## End clamp

End clamp - E/NS 35 N - 0800886

<https://www.phoenixcontact.com/de/produkte/0800886>



End clamp, width: 9.5 mm, color: gray

# Fuse modular terminal block - UK 10-DREHSILED 24 (5X20)

3005138

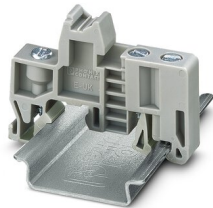
<https://www.phoenixcontact.com/de/produkte/3005138>

## End clamp

End clamp - E/UK - 1201442

<https://www.phoenixcontact.com/de/produkte/1201442>

End clamp, material: PA, color: gray, Mounting on a DIN rail NS 32 or NS 35



---

## End clamp

End clamp - E/UK 1 - 1201413

<https://www.phoenixcontact.com/de/produkte/1201413>

End clamps, for supporting the ends of double-level and three-level terminal blocks, width: 10 mm, color: gray



# Fuse modular terminal block - UK 10-DREHSILED 24 (5X20)

3005138

<https://www.phoenixcontact.com/de/produkte/3005138>

## Female test connector

Female test connector - PSBJ 4/15/6 FARBLOS - 0303419

<https://www.phoenixcontact.com/de/produkte/0303419>



Female test connector, color: transparent

---

## Female test connector

Female test connector - PSBJ 4/15/6 WH - 0303312

<https://www.phoenixcontact.com/de/produkte/0303312>



Female test connector, color: white

# Fuse modular terminal block - UK 10-DREHSILED 24 (5X20)

3005138

<https://www.phoenixcontact.com/de/produkte/3005138>

## Female test connector

Female test connector - PSBJ 4/15/6 RD - 0303325

<https://www.phoenixcontact.com/de/produkte/0303325>



Female test connector, color: red

---

## Female test connector

Female test connector - PSBJ 4/15/6 BU - 0303354

<https://www.phoenixcontact.com/de/produkte/0303354>



Female test connector, color: blue

# Fuse modular terminal block - UK 10-DREHSILED 24 (5X20)

3005138

<https://www.phoenixcontact.com/de/produkte/3005138>

## Female test connector

Female test connector - PSBJ 4/15/6 YE - 0303367

<https://www.phoenixcontact.com/de/produkte/0303367>



Female test connector, color: yellow

---

## Female test connector

Female test connector - PSBJ 4/15/6 GN - 0303370

<https://www.phoenixcontact.com/de/produkte/0303370>



Female test connector, color: green



# Fuse modular terminal block - UK 10-DREHSILED 24 (5X20)

3005138

<https://www.phoenixcontact.com/de/produkte/3005138>

## Female test connector

Female test connector - PSBJ 4/15/6 VT - 0303383

<https://www.phoenixcontact.com/de/produkte/0303383>



Female test connector, color: violet

---

## Female test connector

Female test connector - PSBJ 4/15/6 GY - 0303396

<https://www.phoenixcontact.com/de/produkte/0303396>



Female test connector, color: gray

# Fuse modular terminal block - UK 10-DREHSILED 24 (5X20)

3005138

<https://www.phoenixcontact.com/de/produkte/3005138>

## Female test connector

Female test connector - PSBJ 4/15/6 BK - 0303406

<https://www.phoenixcontact.com/de/produkte/0303406>



Female test connector, color: black

---

## Female test connector

Female test connector - PSB 4/7/6 - 0303299

<https://www.phoenixcontact.com/de/produkte/0303299>



Female test connector, color: silver

---

Phoenix Contact 2022 © - all rights reserved  
<https://www.phoenixcontact.com>

PHOENIX CONTACT Deutschland GmbH  
Flachsmarktstraße 8  
D-32825 Blomberg  
+49 52 35/3-1 20 00  
[info@phoenixcontact.de](mailto:info@phoenixcontact.de)