

Fuse modular terminal block - PT 10,3-HESILED 1000V

3062143

<https://www.phoenixcontact.com/de/produkte/3062143>

Please be informed that the data shown in this PDF document is generated from our Online Catalog. Please find the complete data in the user documentation. Our General Terms of Use for Downloads are valid.



Fuse modular terminal block, fuse type: Midget / 10.3 x 38, nom. voltage: 1000 V, nominal current: 20 A, connection method: Push-in connection, Rated cross section: 10 mm², cross section: 1.5 mm²- 10 mm², mounting type: NS 35/7,5, NS 35/15, color: black

Your advantages

- Fuse holder for fusing PV strings 1000 V DC
- Quick identification of faulty fuses regardless of the current direction, thanks to LED status indicator
- For 10 x 38 gPV fuse-links in accordance with IEC 60269-6

Fuse modular terminal block - PT 10,3-HESILED 1000V



3062143

<https://www.phoenixcontact.com/de/produkte/3062143>

Commercial Data

Item number	3062143
Packing unit	10 pc
Minimum order quantity	10 pc
Sales Key	A1 - Reihenklennen
Product Key	BE2234
Catalog Page	Page 122 (C-1-2019)
GTIN	4046356724739
Weight per Piece (including packing)	54,84 g
Weight per Piece (excluding packing)	54,84 g
Customs tariff number	85369095
Country of origin	CN

Fuse modular terminal block - PT 10,3-HESILED 1000V



3062143

<https://www.phoenixcontact.com/de/produkte/3062143>

Technical Data

Product properties

Product type	Fuse terminal block
Number of connections	2
Number of rows	1

Insulation characteristics

Overvoltage category	III
Degree of pollution	3

Electrical properties

Rated surge voltage	6 kV
Maximum power dissipation for nominal condition	1.82 W
Fuse	Midget / 10.3 x 38
LED voltage range	400 V DC ... 1000 V DC
Maximum power dissipation	3 W (Fuse insert)

Input data

LED voltage range	400 V DC ... 1000 V DC
-------------------	------------------------

Connection data

Number of connections per level	2
Nominal cross section	10 mm ²
Rated cross section AWG	6

Level 1 above 1 below 1

Stripping length	18 mm
Conductor cross section solid	1.5 mm ² ... 10 mm ²
Cross section AWG	16 ... 6
Conductor cross section flexible	1.5 mm ² ... 16 mm ²
Conductor cross section, flexible [AWG]	14 ... 6
Flexible conductor cross section flexible (ferrule, w/o plastic sleeve)	1.5 mm ² ... 10 mm ²
Flexible conductor cross section (ferrule with plastic sleeve)	1.5 mm ² ... 10 mm ²
Nominal current	20 A (the current is determined by the fuse used)
Maximum load current	20 A (the current is determined by the fuse used)
Nominal voltage	1000 V (the voltage is determined by the fuse used)
Nominal cross section	10 mm ²

Level 1 above 1 below 1 Connection cross sections directly pluggable

Conductor cross section solid	1.5 mm ² ... 10 mm ²
Conductor cross section, solid [AWG]	16 ... 6
Flexible conductor cross section flexible (ferrule, w/o plastic sleeve)	4 mm ² ... 10 mm ²

Fuse modular terminal block - PT 10,3-HESILED 1000V



3062143

<https://www.phoenixcontact.com/de/produkte/3062143>

Flexible conductor cross section (ferrule with plastic sleeve)	2.5 mm ² ... 10 mm ²
--	--

Dimensions

Width	17.6 mm
Height NS 35/15	70.5 mm
Height NS 35/7,5	63 mm
Length	87 mm

Material specifications

Color	black
Flammability rating according to UL 94	V0
Insulating material group	IIIa
Insulating material	PA

Mechanical properties

Mechanical data

Open side panel	No
-----------------	----

Environmental and real-life conditions

Ambient conditions

Ambient temperature (operation)	-60 °C ... 85 °C
Ambient temperature (storage/transport)	-25 °C ... 55 °C (for a short time, not exceeding 24 h, -60 °C to +70 °C)
Ambient temperature (assembly)	-5 °C ... 70 °C
Ambient temperature (actuation)	-5 °C ... 70 °C
Permissible humidity (storage/transport)	30 % ... 70 %

Standards and regulations

Connection in acc. with standard	IEC 60269-1 / -2
----------------------------------	------------------

Mounting

Mounting type	NS 35/7,5
	NS 35/15

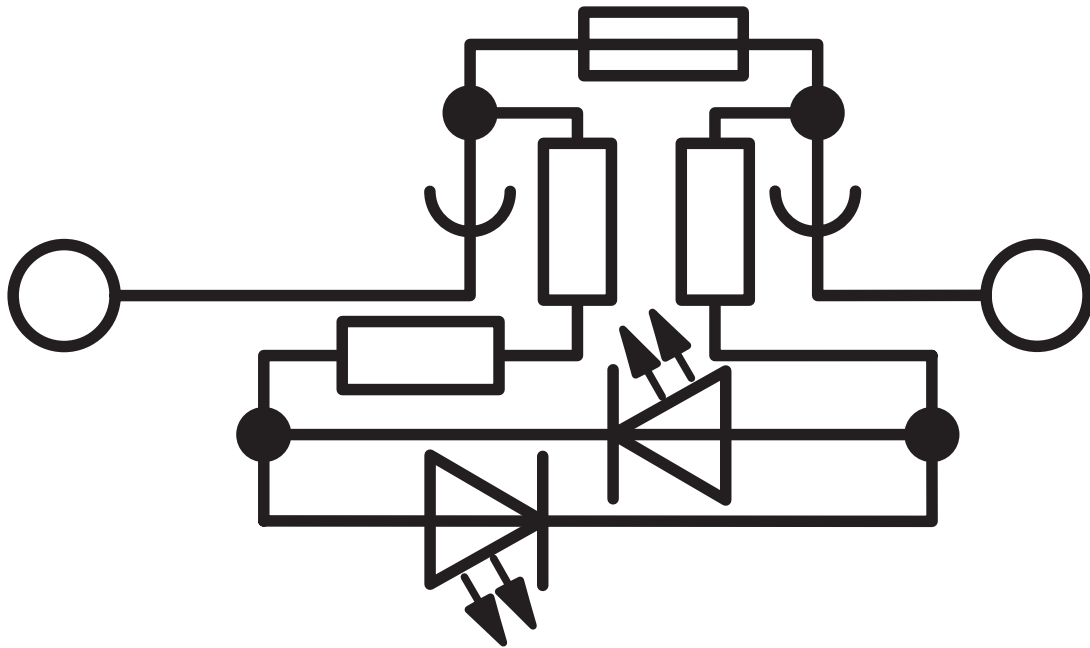
Fuse modular terminal block - PT 10,3-HESILED 1000V

3062143

<https://www.phoenixcontact.com/de/produkte/3062143>

Drawings

Circuit diagram



Fuse modular terminal block - PT 10,3-HESILED 1000V



3062143

<https://www.phoenixcontact.com/de/produkte/3062143>

Approvals



EAC

Approval ID: RU C-DE.AI30.B.01102



EAC

Approval ID: RU C-DE.BL08.B.00644



UL Listed

Approval ID: FILE E 353282

	Nominal Voltage U_N	Nominal Current I_N	Cross Section AWG	Cross Section mm^2
	1000 V	32 A	-	16 - 6

Fuse modular terminal block - PT 10,3-HESILED 1000V



3062143

<https://www.phoenixcontact.com/de/produkte/3062143>

Classifications

ECLASS

ECLASS-9.0	27141116
ECLASS-10.0.1	27141116
ECLASS-11.0	27141116

ETIM

ETIM 8.0	EC000899
----------	----------

UNSPSC

UNSPSC 21.0	39121400
-------------	----------

Fuse modular terminal block - PT 10,3-HESILED 1000V



3062143

<https://www.phoenixcontact.com/de/produkte/3062143>

Environmental Product Compliance

China RoHS	Environmentally friendly use period: unlimited = EFUP-e
	No hazardous substances above threshold values

Fuse modular terminal block - PT 10,3-HESILED 1000V



3062143

<https://www.phoenixcontact.com/de/produkte/3062143>

Accessories

Spacer

Spacer - DP-PT 10,3-HESI - 3062155

<https://www.phoenixcontact.com/de/produkte/3062155>



Spacer for adjacent fuse carriers, 4 should be inserted (2 should be inserted on the outer ends of the fuse terminal block)

DIN rail perforated

DIN rail perforated - NS 35/ 7,5 PERF 2000MM - 0801733

<https://www.phoenixcontact.com/de/produkte/0801733>



DIN rail perforated, acc. to EN 60715, material: Steel, galvanized, passivated with a thick layer, Standard profile, color: silver, Pack of 25 (50 m)

Fuse modular terminal block - PT 10,3-HESILED 1000V

3062143

<https://www.phoenixcontact.com/de/produkte/3062143>

Connection pin

Connection pin - VS-PT 10,3-HESI 16 - 3062157

<https://www.phoenixcontact.com/de/produkte/3062157>



Connection pin, for combining multiple safety levers. Used with fuse carriers without spacer.

DIN rail, unperforated

DIN rail, unperforated - NS 35/ 7,5 UNPERF 2000MM - 0801681

<https://www.phoenixcontact.com/de/produkte/0801681>



DIN rail, unperforated, acc. to EN 60715, material: Steel, galvanized, passivated with a thick layer, Standard profile, color: silver, Pack of 25 (50 m)

Fuse modular terminal block - PT 10,3-HESILED 1000V

3062143

<https://www.phoenixcontact.com/de/produkte/3062143>

Connection pin

Connection pin - VS-PT 10,3-HESI 20 - 3062158

<https://www.phoenixcontact.com/de/produkte/3062158>



Connection pin, for combining multiple safety levers. Used with fuse carriers with spacer.

DIN rail perforated

DIN rail perforated - NS 35/ 7,5 WH PERF 2000MM - 1204119

<https://www.phoenixcontact.com/de/produkte/1204119>



DIN rail perforated, acc. to EN 60715, material: Steel, Galvanized, white passivated, Standard profile, color: silver, Pack of 25 (50 m)

Fuse modular terminal block - PT 10,3-HESILED 1000V

3062143

<https://www.phoenixcontact.com/de/produkte/3062143>

Mounting material

Mounting material - PT-IL - 3208090

<https://www.phoenixcontact.com/de/produkte/3208090>

Operating decal for the push-in Technology



DIN rail, unperforated

DIN rail, unperforated - NS 35/ 7,5 WH UNPERF 2000MM-VPE 10 - 1204122

<https://www.phoenixcontact.com/de/produkte/1204122>



DIN rail, unperforated, acc. to EN 60715, material: Steel, Galvanized, white passivated, Standard profile, color: silver, Pack of 10 (20 m)

Fuse modular terminal block - PT 10,3-HESILED 1000V



3062143

<https://www.phoenixcontact.com/de/produkte/3062143>

Marker card

Marker card - SBS10:UNBEDRUCKT - 1007248

<https://www.phoenixcontact.com/de/produkte/1007248>



Marker card, Card, white, unlabeled, can be labeled with: Marker pen, perforated, mounting type: snapped, snap into flat marker groove, for terminal block width: 10 mm, lettering field size: 6 x 10.1 mm, Number of individual labels: 250

DIN rail, unperforated

DIN rail, unperforated - NS 35/ 7,5 AL UNPERF 2000MM - 0801704

<https://www.phoenixcontact.com/de/produkte/0801704>



DIN rail, unperforated, acc. to EN 60715, material: Aluminum, uncoated, Standard profile, color: silver, Pack of 25 (50 m)

Fuse modular terminal block - PT 10,3-HESILED 1000V

3062143

<https://www.phoenixcontact.com/de/produkte/3062143>

Screwdriver

Screwdriver - SZS 1,0X4,0 VDE - 1205066

<https://www.phoenixcontact.com/de/produkte/1205066>



Screwdriver, slot-headed, VDE insulated, size: 1.0 x 4.0 x 100 mm, 2-component grip, with non-slip grip

DIN rail perforated

DIN rail perforated - NS 35/ 7,5 ZN PERF 2000MM - 1206421

<https://www.phoenixcontact.com/de/produkte/1206421>



DIN rail perforated, acc. to EN 60715, material: Steel, galvanized, Standard profile, color: silver, Pack of 25 (50 m)

Fuse modular terminal block - PT 10,3-HESILED 1000V



3062143

<https://www.phoenixcontact.com/de/produkte/3062143>

Warning label

Warning label - WS PT 16 - 1029033

<https://www.phoenixcontact.com/de/produkte/1029033>



Warning label, yellow/black, labeled: Lightning flash, mounting type: plug in, for terminal block width: 12.2 mm

DIN rail, unperforated

DIN rail, unperforated - NS 35/ 7,5 ZN UNPERF 2000MM - 1206434

<https://www.phoenixcontact.com/de/produkte/1206434>



DIN rail, unperforated, acc. to EN 60715, material: Steel, galvanized, Standard profile, color: silver, Pack of 25 (50 m)

Fuse modular terminal block - PT 10,3-HESILED 1000V

3062143

<https://www.phoenixcontact.com/de/produkte/3062143>

DIN rail, unperforated

DIN rail, unperforated - NS 35/ 7,5 CU UNPERF 2000MM-VPE 10 - 0801762

<https://www.phoenixcontact.com/de/produkte/0801762>



DIN rail, unperforated, acc. to EN 60715, material: Copper, uncoated, Standard profile, color: copper-colored, Pack of 10 (20 m)

End cap

End cap - NS 35/ 7,5 CAP - 1206560

<https://www.phoenixcontact.com/de/produkte/1206560>

DIN rail end piece, for DIN rail NS 35/7.5



Fuse modular terminal block - PT 10,3-HESILED 1000V

3062143

<https://www.phoenixcontact.com/de/produkte/3062143>

DIN rail perforated

DIN rail perforated - NS 35/15 PERF 2000MM - 1201730

<https://www.phoenixcontact.com/de/produkte/1201730>



DIN rail perforated, similar to EN 60715, material: Steel, galvanized, passivated with a thick layer, Standard profile, color: silver, Pack of 25 (50 m)

DIN rail, unperforated

DIN rail, unperforated - NS 35/15 UNPERF 2000MM - 1201714

<https://www.phoenixcontact.com/de/produkte/1201714>



DIN rail, unperforated, similar to EN 60715, material: Steel, galvanized, passivated with a thick layer, Standard profile, color: silver, Pack of 25 (50 m)

Fuse modular terminal block - PT 10,3-HESILED 1000V

3062143

<https://www.phoenixcontact.com/de/produkte/3062143>

DIN rail perforated

DIN rail perforated - NS 35/15 WH PERF 2000MM - 0806602

<https://www.phoenixcontact.com/de/produkte/0806602>



DIN rail perforated, similar to EN 60715, material: Steel, Galvanized, white passivated, Standard profile, color: white, Pack of 25 (50 m)

DIN rail, unperforated

DIN rail, unperforated - NS 35/15 WH UNPERF 2000MM-VPE 10 - 1204135

<https://www.phoenixcontact.com/de/produkte/1204135>



DIN rail, unperforated, similar to EN 60715, material: Steel, Galvanized, white passivated, Standard profile, color: silver, Pack of 10 (20 m)

Fuse modular terminal block - PT 10,3-HESILED 1000V

3062143

<https://www.phoenixcontact.com/de/produkte/3062143>

DIN rail, unperforated

DIN rail, unperforated - NS 35/15 AL UNPERF 2000MM - 1201756

<https://www.phoenixcontact.com/de/produkte/1201756>



DIN rail, unperforated, similar to EN 60715, material: Aluminum, uncoated, Standard profile, color: silver

DIN rail perforated

DIN rail perforated - NS 35/15 ZN PERF 2000MM - 1206599

<https://www.phoenixcontact.com/de/produkte/1206599>



DIN rail perforated, similar to EN 60715, material: Steel, galvanized, Standard profile, color: silver, Pack of 25 (50 m)

Fuse modular terminal block - PT 10,3-HESILED 1000V

3062143

<https://www.phoenixcontact.com/de/produkte/3062143>

DIN rail, unperforated

DIN rail, unperforated - NS 35/15 ZN UNPERF 2000MM - 1206586

<https://www.phoenixcontact.com/de/produkte/1206586>



DIN rail, unperforated, similar to EN 60715, material: Steel, galvanized, Standard profile, color: silver, Pack of 25 (50 m)

DIN rail, unperforated

DIN rail, unperforated - NS 35/15 CU UNPERF 2000MM-VPE 10 - 1201895

<https://www.phoenixcontact.com/de/produkte/1201895>



DIN rail, unperforated, similar to EN 60715, material: Copper, uncoated, Standard profile, color: copper-colored, Pack of 10 (20 m)

Fuse modular terminal block - PT 10,3-HESILED 1000V

3062143

<https://www.phoenixcontact.com/de/produkte/3062143>

End cap

End cap - NS 35/15 CAP - 1206573

<https://www.phoenixcontact.com/de/produkte/1206573>

DIN rail end piece, for DIN rail NS 35/15



DIN rail, unperforated

DIN rail, unperforated - NS 35/15-2,3 UNPERF 2000MM-VPE 10 - 1201798

<https://www.phoenixcontact.com/de/produkte/1201798>



DIN rail, unperforated, acc. to EN 60715, material: Steel, galvanized, passivated with a thick layer, Standard profile 2.3 mm, color: silver, Pack of 10 (20 m)

Fuse modular terminal block - PT 10,3-HESILED 1000V



3062143

<https://www.phoenixcontact.com/de/produkte/3062143>

Zack Marker strip, flat

Zack Marker strip, flat - ZBF 16:UNPRINTED - 0827464

<https://www.phoenixcontact.com/de/produkte/0827464>



Zack Marker strip, flat, Strip, white, unlabeled, can be labeled with: PLOTMARK, CMS-P1-PLOTTER, mounting type: snapped, for terminal block width: 16 mm, lettering field size: 16.25 x 10.5 mm, Number of individual labels: 50

Zack Marker strip, flat

Zack Marker strip, flat - ZBF 16 CUS - 0827465

<https://www.phoenixcontact.com/de/produkte/0827465>



Zack Marker strip, flat, can be ordered: Strip, white, labeled according to customer specifications, mounting type: snap into flat marker groove, for terminal block width: 16 mm, lettering field size: 5.15 x 16 mm, Number of individual labels: 5

Fuse modular terminal block - PT 10,3-HESILED 1000V

3062143

<https://www.phoenixcontact.com/de/produkte/3062143>

Marker for terminal blocks

Marker for terminal blocks - UC-TMF 16 - 0819262

<https://www.phoenixcontact.com/de/produkte/0819262>



Marker for terminal blocks, Sheet, white, unlabeled, can be labeled with: BLUEMARK ID COLOR, BLUEMARK ID, BLUEMARK CLED, PLOTMARK, CMS-P1-PLOTTER, mounting type: snapped, for terminal block width: 16 mm, lettering field size: 15.45 x 5.1 mm, Number of individual labels: 32

Marker for terminal blocks

Marker for terminal blocks - UC-TMF 16 CUS - 0824678

<https://www.phoenixcontact.com/de/produkte/0824678>



Marker for terminal blocks, can be ordered: by sheet, white, labeled according to customer specifications, mounting type: snap into flat marker groove, for terminal block width: 16 mm, lettering field size: 15.45 x 5.1 mm, Number of individual labels: 32

Fuse modular terminal block - PT 10,3-HESILED 1000V

3062143

<https://www.phoenixcontact.com/de/produkte/3062143>

Marker for terminal blocks

Marker for terminal blocks - UCT-TMF 16 - 0829218

<https://www.phoenixcontact.com/de/produkte/0829218>



Marker for terminal blocks, Sheet, white, unlabeled, can be labeled with: TOPMARK NEO, TOPMARK LASER, BLUEMARK ID COLOR, BLUEMARK ID, BLUEMARK CLED, THERMOMARK PRIME, THERMOMARK CARD 2.0, THERMOMARK CARD, mounting type: snapped, for terminal block width: 16 mm, lettering field size: 15.2 x 4.7 mm, Number of individual labels: 24

Marker for terminal blocks

Marker for terminal blocks - UCT-TMF 16 CUS - 0829693

<https://www.phoenixcontact.com/de/produkte/0829693>



Marker for terminal blocks, can be ordered: by sheet, white, labeled according to customer specifications, mounting type: snap into flat marker groove, for terminal block width: 16 mm, lettering field size: 15.2 x 4.7 mm, Number of individual labels: 24

Fuse modular terminal block - PT 10,3-HESILED 1000V

3062143

<https://www.phoenixcontact.com/de/produkte/3062143>

End clamp

End clamp - CLIPFIX 35 - 3022218

<https://www.phoenixcontact.com/de/produkte/3022218>

Quick mounting end clamp for NS 35/7,5 DIN rail or NS 35/15 DIN rail, with marking option, width: 9.5 mm, color: gray



End clamp

End clamp - CLIPFIX 35-5 - 3022276

<https://www.phoenixcontact.com/de/produkte/3022276>

Quick mounting end clamp for NS 35/7,5 DIN rail or NS 35/15 DIN rail, with marking option, with parking option for FBS...5, FBS...6, KSS 5, KSS 6, width: 5.15 mm, color: gray



Fuse modular terminal block - PT 10,3-HESILED 1000V

3062143

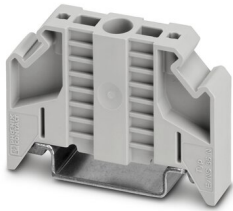
<https://www.phoenixcontact.com/de/produkte/3062143>

End clamp

End clamp - E/NS 35 N - 0800886

<https://www.phoenixcontact.com/de/produkte/0800886>

End clamp, width: 9.5 mm, color: gray



End clamp

End clamp - E/UK - 1201442

<https://www.phoenixcontact.com/de/produkte/1201442>

End clamp, material: PA, color: gray, Mounting on a DIN rail NS 32 or NS 35



Fuse modular terminal block - PT 10,3-HESILED 1000V

3062143

<https://www.phoenixcontact.com/de/produkte/3062143>

End clamp

End clamp - E/UK 1 - 1201413

<https://www.phoenixcontact.com/de/produkte/1201413>



End clamps, for supporting the ends of double-level and three-level terminal blocks, width: 10 mm, color: gray

Fuse

Fuse - FUSE 10,3X38 2A PV - 3061295

<https://www.phoenixcontact.com/de/produkte/3061295>



Fuse, 10.3x38 mm, up to 1000 V DC, gPV characteristics

Fuse modular terminal block - PT 10,3-HESILED 1000V

3062143

<https://www.phoenixcontact.com/de/produkte/3062143>

Fuse

Fuse - FUSE 10,3X38 4A PV - 3061305

<https://www.phoenixcontact.com/de/produkte/3061305>

Fuse, 10.3x38 mm, up to 1000 V DC, gPV characteristics



Fuse

Fuse - FUSE 10,3X38 6A PV - 3061318

<https://www.phoenixcontact.com/de/produkte/3061318>

Fuse, 10.3x38 mm, up to 1000 V DC, gPV characteristics



Fuse modular terminal block - PT 10,3-HESILED 1000V

3062143

<https://www.phoenixcontact.com/de/produkte/3062143>

Fuse

Fuse - FUSE 10,3X38 8A PV - 3061321

<https://www.phoenixcontact.com/de/produkte/3061321>

Fuse, 10.3x38 mm, up to 1000 V DC, gPV characteristics



Fuse

Fuse - FUSE 10,3X38 10A PV - 3061334

<https://www.phoenixcontact.com/de/produkte/3061334>

Fuse, 10.3x38 mm, up to 1000 V DC, gPV characteristics



Fuse modular terminal block - PT 10,3-HESILED 1000V

3062143

<https://www.phoenixcontact.com/de/produkte/3062143>

Fuse

Fuse - FUSE 10,3X38 12A PV - 3061347

<https://www.phoenixcontact.com/de/produkte/3061347>

Fuse, 10.3x38 mm, up to 1000 V DC, gPV characteristics



Fuse

Fuse - FUSE 10,3X38 15A PV - 3061348

<https://www.phoenixcontact.com/de/produkte/3061348>

Fuse, 10.3x38 mm, up to 1000 V DC, gPV characteristics



Fuse modular terminal block - PT 10,3-HESILED 1000V

3062143

<https://www.phoenixcontact.com/de/produkte/3062143>

Fuse

Fuse - FUSE 10,3X38 16A PV - 3061350

<https://www.phoenixcontact.com/de/produkte/3061350>

Fuse, 10.3x38 mm, up to 1000 V DC, gPV characteristics



Fuse

Fuse - FUSE 10,3X38 20A PV - 3061363

<https://www.phoenixcontact.com/de/produkte/3061363>

Fuse, 10.3x38 mm, up to 1000 V DC, gPV characteristics



Fuse modular terminal block - PT 10,3-HESILED 1000V

3062143

<https://www.phoenixcontact.com/de/produkte/3062143>

Fuse

Fuse - FUSE 10,3X38 25A PV - 3061364

<https://www.phoenixcontact.com/de/produkte/3061364>

Fuse, 10.3x38 mm, up to 1000 V DC, gPV characteristics



Fuse

Fuse - FUSE 10,3X38 25A PV 900V - 3061365

<https://www.phoenixcontact.com/de/produkte/3061365>

Fuse, 10.3 mm x 38 mm, up to 900 V DC, gPV characteristic



Fuse modular terminal block - PT 10,3-HESILED 1000V

3062143

<https://www.phoenixcontact.com/de/produkte/3062143>

Fuse

Fuse - FUSE 10,3X38 6A PV A - 3062778

<https://www.phoenixcontact.com/de/produkte/3062778>



Fuse, for the photovoltaics industry according to UL 2579, nominal current: 6 A, length: 38 mm, diameter: 10.3 mm, color: white

Fuse

Fuse - FUSE 10,3X38 8A PV A - 3062779

<https://www.phoenixcontact.com/de/produkte/3062779>



Fuse, for the photovoltaics industry according to UL 2579, nominal current: 8 A, length: 38 mm, diameter: 10.3 mm, color: white

Fuse modular terminal block - PT 10,3-HESILED 1000V

3062143

<https://www.phoenixcontact.com/de/produkte/3062143>

Fuse

Fuse - FUSE 10,3X38 10A PV A - 3062780

<https://www.phoenixcontact.com/de/produkte/3062780>



Fuse, for the photovoltaics industry according to UL 2579, nominal current: 10 A, length: 38 mm, diameter: 10.3 mm, color: white

Fuse

Fuse - FUSE 10,3X38 12A PV A - 3062781

<https://www.phoenixcontact.com/de/produkte/3062781>



Fuse, for the photovoltaics industry according to UL 2579, nominal current: 12 A, length: 38 mm, diameter: 10.3 mm, color: white

Fuse modular terminal block - PT 10,3-HESILED 1000V

3062143

<https://www.phoenixcontact.com/de/produkte/3062143>

Fuse

Fuse - FUSE 10,3X38 16A PV A - 3062782

<https://www.phoenixcontact.com/de/produkte/3062782>



Fuse, for the photovoltaics industry according to UL 2579, nominal current: 16 A, length: 38 mm, diameter: 10.3 mm, color: white

Fuse

Fuse - FUSE 10,3X38 15A PV A - 3062784

<https://www.phoenixcontact.com/de/produkte/3062784>



Fuse, for the photovoltaics industry according to UL 2579, nominal current: 15 A, length: 38 mm, diameter: 10.3 mm, color: white

Fuse modular terminal block - PT 10,3-HESILED 1000V

3062143

<https://www.phoenixcontact.com/de/produkte/3062143>

Crimping pliers

Crimping pliers - CRIMPFOX CENTRUS 6S - 1213144

<https://www.phoenixcontact.com/de/produkte/1213144>



Crimping pliers, for uninsulated and insulated ferrules, DIN 46228 Part 1 and 4, from 0.14 mm² ... 6 mm², also for TWIN ferrules up to 2 x 4 mm², automatic cross section adjustment, lateral insertion, equipped with fall protection

Crimping pliers

Crimping pliers - CRIMPFOX CENTRUS 10S - 1213154

<https://www.phoenixcontact.com/de/produkte/1213154>



Crimping pliers, for uninsulated and insulated ferrules, DIN 46228 Part 1 and 4, from 0.14 mm² ... 10 mm², also for TWIN ferrules up to 2 x 4 mm², automatic cross section adjustment, lateral insertion, equipped with fall protection

Fuse modular terminal block - PT 10,3-HESILED 1000V

3062143

<https://www.phoenixcontact.com/de/produkte/3062143>

Crimping pliers

Crimping pliers - CRIMPFOX CENTRUS 6H - 1213146

<https://www.phoenixcontact.com/de/produkte/1213146>



Crimping pliers, for uninsulated and insulated ferrules, DIN 46228 Part 1 and 4, from 0.14 mm² ... 6 mm², also for TWIN ferrules up to 2 x 4 mm², automatic cross section adjustment, lateral insertion, equipped with fall protection

Crimping pliers

Crimping pliers - CRIMPFOX CENTRUS 10H - 1213156

<https://www.phoenixcontact.com/de/produkte/1213156>



Crimping pliers, for uninsulated and insulated ferrules, DIN 46228 Part 1 and 4, from 0.14 mm² ... 10 mm², also for TWIN ferrules up to 2 x 4 mm², automatic cross section adjustment, lateral insertion, equipped with fall protection

Fuse modular terminal block - PT 10,3-HESILED 1000V

3062143

<https://www.phoenixcontact.com/de/produkte/3062143>

Crimping pliers

Crimping pliers - CRIMPFOX 10S - 1212045

<https://www.phoenixcontact.com/de/produkte/1212045>



Crimping pliers, for ferrules without insulating collar according to DIN 46228 Part 1 and ferrules with insulating collar according to DIN 46228 Part 4, 0.14 mm² ... 10 mm², unlockable pressure lock, lateral entry

Crimping pliers

Crimping pliers - CRIMPFOX 6H - 1212046

<https://www.phoenixcontact.com/de/produkte/1212046>



Crimping pliers, for ferrules without insulating collar according to DIN 46228 Part 1 and ferrules with insulating collar according to DIN 46228 Part 4, 0.14 mm² ... 6 mm², unlockable pressure lock, lateral entry

Fuse modular terminal block - PT 10,3-HESILED 1000V

3062143

<https://www.phoenixcontact.com/de/produkte/3062143>

Crimping pliers

Crimping pliers - CRIMPFOX 2,5-M - 1212719

<https://www.phoenixcontact.com/de/produkte/1212719>



Crimping pliers, for ferrules without insulating collar according to DIN 46228 Part 1 and ferrules with insulating collar according to DIN 46228 Part 4, 0.25 mm² ... 2.5 mm², lateral entry, trapezoidal crimp

Crimping pliers

Crimping pliers - CRIMPFOX 6-M - 1212720

<https://www.phoenixcontact.com/de/produkte/1212720>



Crimping pliers, for ferrules without insulating collar according to DIN 46228 Part 1 and ferrules with insulating collar according to DIN 46228 Part 4, 0.25 mm² ... 6.0 mm², lateral entry, trapezoidal crimp

Fuse modular terminal block - PT 10,3-HESILED 1000V

3062143

<https://www.phoenixcontact.com/de/produkte/3062143>

Crimping pliers

Crimping pliers - CRIMPFOX 6 - 1212034

<https://www.phoenixcontact.com/de/produkte/1212034>



Crimping pliers, for ferrules without insulating collar according to DIN 46228 Part 1 and ferrules with insulating collar according to DIN 46228 Part 4, 0.25 mm² ... 6.0 mm², lateral entry, trapezoidal crimp

Crimping pliers

Crimping pliers - CRIMPFOX 6T - 1212037

<https://www.phoenixcontact.com/de/produkte/1212037>



Crimping pliers, for ferrules without insulating collar according to DIN 46228 Part 1 and ferrules with insulating collar according to DIN 46228 Part 4, 0.25 mm² ... 6 mm², lateral entry, trapezoidal crimp

Fuse modular terminal block - PT 10,3-HESILED 1000V

3062143

<https://www.phoenixcontact.com/de/produkte/3062143>

Crimping pliers

Crimping pliers - CRIMPFOX 6T-F - 1212038

<https://www.phoenixcontact.com/de/produkte/1212038>



Crimping pliers, for ferrules without insulating collar according to DIN 46228 Part 1 and ferrules with insulating collar according to DIN 46228 Part 4, 0.25 mm² ... 6 mm², front entry, trapezoidal crimp

Crimping pliers

Crimping pliers - CRIMPFOX 6S-F - 1212043

<https://www.phoenixcontact.com/de/produkte/1212043>



Crimping pliers, for ferrules without insulating collar according to DIN 46228 Part 1 and ferrules with insulating collar according to DIN 46228 Part 4, 0.5 mm² ... 6 mm², front entry, square crimp

Fuse modular terminal block - PT 10,3-HESILED 1000V



3062143

<https://www.phoenixcontact.com/de/produkte/3062143>

Crimping pliers

Crimping pliers - CRIMPFOX-M - 1212072

<https://www.phoenixcontact.com/de/produkte/1212072>



Basic pliers, for accommodating dies for a wide range of type of contacts

Phoenix Contact 2022 © - all rights reserved

<https://www.phoenixcontact.com>

PHOENIX CONTACT Deutschland GmbH

Flachsmarktstraße 8

D-32825 Blomberg

+49 52 35/3-1 20 00

info@phoenixcontact.de