

# Relay base - RIF-1-BPT/2X21

2900931

<https://www.phoenixcontact.com/de/produkte/2900931>

Please be informed that the data shown in this PDF document is generated from our Online Catalog. Please find the complete data in the user documentation. Our General Terms of Use for Downloads are valid.

---



Relay base RIF-1..., for miniature power relay with 1 or 2 changeover contacts or solid-state relays of the same design, Push-in connection, plug-in option for input/interference suppression modules, for mounting on NS 35/7,5

---

# Relay base - RIF-1-BPT/2X21



2900931

<https://www.phoenixcontact.com/de/produkte/2900931>

## Commercial Data

Item number	2900931
Packing unit	10 pc
Minimum order quantity	1 pc
Sales Key	G1 - Relais
Product Key	CK6522
Catalog Page	Page 288 (C-5-2019)
GTIN	4046356733151
Weight per Piece (including packing)	49,7 g
Weight per Piece (excluding packing)	49,7 g
Customs tariff number	85366990
Country of origin	CN

# Relay base - RIF-1-BPT/2X21



2900931

<https://www.phoenixcontact.com/de/produkte/2900931>

## Technical Data

### Notes

Notes on operation	FBS 2-6... plug-in bridge for the input side (A2) and FBS-2-8... plug-in bridge for the output side (11/21)
--------------------	---

### Product properties

Product type	Relay socket
--------------	--------------

### Electrical properties

Nominal voltage $U_N$	250 V AC/DC
Nominal current $I_N$	max. 13 A (Depends on application/assembly)
Protective circuit	depending on the selected input/suppressor modules

### Connection data

Connection method	Push-in connection
Stripping length	8 mm
Conductor cross section solid	0.14 mm <sup>2</sup> ... 1.5 mm <sup>2</sup>
Conductor cross section flexible	0.14 mm <sup>2</sup> ... 1.5 mm <sup>2</sup>
	0.14 mm <sup>2</sup> ... 1.5 mm <sup>2</sup> (Ferrule with plastic sleeve)
	0.14 mm <sup>2</sup> ... 1 mm <sup>2</sup> (Ferrule with plastic sleeve, two conductors on double terminal block)
Conductor cross section AWG	26 ... 16 (solid)
	26 ... 16 (flexible)

### Dimensions

Width	16 mm
Height	96 mm
Depth	75 mm (with retaining bracket)
Hole diameter	3.2 mm

### Material specifications

Flammability rating according to UL 94	V2 (Housing)
--	--------------

### Environmental and real-life conditions

#### Ambient conditions

Ambient temperature (operation)	-40 °C ... 85 °C (Depends on application/assembly)
Ambient temperature (storage/transport)	-40 °C ... 85 °C

### Approval data

#### Corrosive gas test

Identification	ISA-S71.04. G3 Harsh Group
	EN 60068-2-60

# Relay base - RIF-1-BPT/2X21



2900931

<https://www.phoenixcontact.com/de/produkte/2900931>

## Mounting

Mounting type	DIN rail mounting
Mounting position	any

# Relay base - RIF-1-BPT/2X21



2900931

<https://www.phoenixcontact.com/de/produkte/2900931>

## Approvals



**CSA**

Approval ID: 2607057



**UL Recognized**

Approval ID: FILE E 113228



**EAC**

Approval ID: RU D-DE.B\*00573/18



**DNV GL**

Approval ID: TAA000018V



**DNV GL**

Approval ID: TAA000018V

# Relay base - RIF-1-BPT/2X21



2900931

<https://www.phoenixcontact.com/de/produkte/2900931>

## Classifications

### ECLASS

ECLASS-9.0	27371603
ECLASS-10.0.1	27371603
ECLASS-11.0	27371603

### ETIM

ETIM 8.0	EC001456
----------	----------

### UNSPSC

UNSPSC 21.0	39122300
-------------	----------

# Relay base - RIF-1-BPT/2X21

2900931

<https://www.phoenixcontact.com/de/produkte/2900931>



## Environmental Product Compliance

China RoHS

Environmentally Friendly Use Period = 50 years

For information on hazardous substances, refer to the manufacturer's declaration available under "Downloads"

# Relay base - RIF-1-BPT/2X21

2900931

<https://www.phoenixcontact.com/de/produkte/2900931>



## Accessories

### Plug-in bridge

Plug-in bridge - FBS 2-6 - 3030336

<https://www.phoenixcontact.com/de/produkte/3030336>



Plug-in bridge, pitch: 6.2 mm, color: red

---

### DIN rail perforated

DIN rail perforated - NS 35/ 7,5 PERF 2000MM - 0801733

<https://www.phoenixcontact.com/de/produkte/0801733>



DIN rail perforated, acc. to EN 60715, material: Steel, galvanized, passivated with a thick layer, Standard profile, color: silver, Pack of 25 (50 m)



# Relay base - RIF-1-BPT/2X21

2900931

<https://www.phoenixcontact.com/de/produkte/2900931>



## Plug-in bridge

Plug-in bridge - FBS 2-6 BU - 3036932

<https://www.phoenixcontact.com/de/produkte/3036932>



Plug-in bridge, pitch: 6.2 mm, color: blue

---

## DIN rail, unperforated

DIN rail, unperforated - NS 35/ 7,5 UNPERF 2000MM - 0801681

<https://www.phoenixcontact.com/de/produkte/0801681>



DIN rail, unperforated, acc. to EN 60715, material: Steel, galvanized, passivated with a thick layer, Standard profile, color: silver, Pack of 25 (50 m)

# Relay base - RIF-1-BPT/2X21

2900931

<https://www.phoenixcontact.com/de/produkte/2900931>



## Plug-in bridge

Plug-in bridge - FBS 2-6 GY - 3032237

<https://www.phoenixcontact.com/de/produkte/3032237>



Plug-in bridge, pitch: 6.2 mm, color: gray

---

## DIN rail perforated

DIN rail perforated - NS 35/ 7,5 WH PERF 2000MM - 1204119

<https://www.phoenixcontact.com/de/produkte/1204119>



DIN rail perforated, acc. to EN 60715, material: Steel, Galvanized, white passivated, Standard profile, color: silver, Pack of 25 (50 m)

# Relay base - RIF-1-BPT/2X21

2900931

<https://www.phoenixcontact.com/de/produkte/2900931>



## Plug-in bridge

Plug-in bridge - FBS 2-8 - 3030284

<https://www.phoenixcontact.com/de/produkte/3030284>



Plug-in bridge, pitch: 8.2 mm, color: red

---

## DIN rail, unperforated

DIN rail, unperforated - NS 35/ 7,5 WH UNPERF 2000MM-VPE 10 - 1204122

<https://www.phoenixcontact.com/de/produkte/1204122>



DIN rail, unperforated, acc. to EN 60715, material: Steel, Galvanized, white passivated, Standard profile, color: silver, Pack of 10 (20 m)

# Relay base - RIF-1-BPT/2X21

2900931

<https://www.phoenixcontact.com/de/produkte/2900931>



## Plug-in bridge

Plug-in bridge - FBS 2-8 BU - 3032567

<https://www.phoenixcontact.com/de/produkte/3032567>



Plug-in bridge, pitch: 8.2 mm, color: blue

---

## DIN rail, unperforated

DIN rail, unperforated - NS 35/ 7,5 AL UNPERF 2000MM - 0801704

<https://www.phoenixcontact.com/de/produkte/0801704>



DIN rail, unperforated, acc. to EN 60715, material: Aluminum, uncoated, Standard profile, color: silver, Pack of 25 (50 m)

# Relay base - RIF-1-BPT/2X21

2900931

<https://www.phoenixcontact.com/de/produkte/2900931>



## Plug-in bridge

Plug-in bridge - FBS 2-8 GY 7042 - 3032541

<https://www.phoenixcontact.com/de/produkte/3032541>



Bridge for potential distribution

---

## DIN rail perforated

DIN rail perforated - NS 35/ 7,5 ZN PERF 2000MM - 1206421

<https://www.phoenixcontact.com/de/produkte/1206421>



DIN rail perforated, acc. to EN 60715, material: Steel, galvanized, Standard profile, color: silver, Pack of 25 (50 m)

# Relay base - RIF-1-BPT/2X21

2900931

<https://www.phoenixcontact.com/de/produkte/2900931>



## Retaining bracket

Retaining bracket - RIF-RH-1 - 2900953

<https://www.phoenixcontact.com/de/produkte/2900953>



Relay retaining bracket, with ejector function and holder for marking material, suitable for RIF-1 relay base, for 16 mm tall miniature power relay and solid-state relay

---

## DIN rail, unperforated

DIN rail, unperforated - NS 35/ 7,5 ZN UNPERF 2000MM - 1206434

<https://www.phoenixcontact.com/de/produkte/1206434>



DIN rail, unperforated, acc. to EN 60715, material: Steel, galvanized, Standard profile, color: silver, Pack of 25 (50 m)

# Relay base - RIF-1-BPT/2X21

2900931

<https://www.phoenixcontact.com/de/produkte/2900931>



## Retaining bracket

Retaining bracket - RIF-RH-1-H - 2904468

<https://www.phoenixcontact.com/de/produkte/2904468>



Relay retaining bracket, with ejector function and holder for marking material, suitable for RIF-1 relay base, for 25 mm tall miniature power relay and solid-state relay

---

## DIN rail, unperforated

DIN rail, unperforated - NS 35/ 7,5 CU UNPERF 2000MM-VPE 10 - 0801762

<https://www.phoenixcontact.com/de/produkte/0801762>



DIN rail, unperforated, acc. to EN 60715, material: Copper, uncoated, Standard profile, color: copper-colored, Pack of 10 (20 m)

# Relay base - RIF-1-BPT/2X21

2900931

<https://www.phoenixcontact.com/de/produkte/2900931>



## Relay retaining bracket

Relay retaining bracket - RIF-RHM-1 - 2905986

<https://www.phoenixcontact.com/de/produkte/2905986>



Relay retaining bracket, wire model, suitable for RIF-1 relay base, for 16 mm high octal miniature power and solid-state relays

---

## End cap

End cap - NS 35/ 7,5 CAP - 1206560

<https://www.phoenixcontact.com/de/produkte/1206560>

DIN rail end piece, for DIN rail NS 35/7.5





# Relay base - RIF-1-BPT/2X21

2900931

<https://www.phoenixcontact.com/de/produkte/2900931>



## Relay retaining bracket

Relay retaining bracket - RIF-RHM-1-H - 2905985

<https://www.phoenixcontact.com/de/produkte/2905985>



Relay retaining bracket, wire model, suitable for RIF-1 relay base, for 25 mm high octal miniature power relays

---

## DIN rail perforated

DIN rail perforated - NS 35/15 PERF 2000MM - 1201730

<https://www.phoenixcontact.com/de/produkte/1201730>



DIN rail perforated, similar to EN 60715, material: Steel, galvanized, passivated with a thick layer, Standard profile, color: silver, Pack of 25 (50 m)

# Relay base - RIF-1-BPT/2X21

2900931

<https://www.phoenixcontact.com/de/produkte/2900931>



## Plug-in module

Plug-in module - RIF-LDP-12-24 DC - 2900939

<https://www.phoenixcontact.com/de/produkte/2900939>



Plug-in module, for mounting on RIF-1, RIF-2, RIF-3, and RIF-4, with freewheeling diode and yellow LED, polarity: A1+, A2-, input voltage: 12 V DC ... 24 V DC  $\pm 30\%$

---

## DIN rail, unperforated

DIN rail, unperforated - NS 35/15 UNPERF 2000MM - 1201714

<https://www.phoenixcontact.com/de/produkte/1201714>



DIN rail, unperforated, similar to EN 60715, material: Steel, galvanized, passivated with a thick layer, Standard profile, color: silver, Pack of 25 (50 m)

# Relay base - RIF-1-BPT/2X21

2900931

<https://www.phoenixcontact.com/de/produkte/2900931>



## Plug-in module

Plug-in module - RIF-LDP-48-60 DC - 2900940

<https://www.phoenixcontact.com/de/produkte/2900940>



Plug-in module, for mounting on RIF-1, RIF-2, RIF-3, and RIF-4, with freewheeling diode and yellow LED, polarity: A1+, A2-, input voltage: 48 V DC ... 60 V DC  $\pm 20\%$

---

## DIN rail perforated

DIN rail perforated - NS 35/15 WH PERF 2000MM - 0806602

<https://www.phoenixcontact.com/de/produkte/0806602>



DIN rail perforated, similar to EN 60715, material: Steel, Galvanized, white passivated, Standard profile, color: white, Pack of 25 (50 m)

# Relay base - RIF-1-BPT/2X21

2900931

<https://www.phoenixcontact.com/de/produkte/2900931>



## Plug-in module

Plug-in module - RIF-LDP-110 DC - 2900941

<https://www.phoenixcontact.com/de/produkte/2900941>



Plug-in module, for mounting on RIF-1, RIF-2, RIF-3, and RIF-4, with freewheeling diode and yellow LED, polarity: A1+, A2-, input voltage: 110 V DC  $\pm 20\%$

---

## DIN rail, unperforated

DIN rail, unperforated - NS 35/15 WH UNPERF 2000MM-VPE 10 - 1204135

<https://www.phoenixcontact.com/de/produkte/1204135>



DIN rail, unperforated, similar to EN 60715, material: Steel, Galvanized, white passivated, Standard profile, color: silver, Pack of 10 (20 m)

# Relay base - RIF-1-BPT/2X21

2900931

<https://www.phoenixcontact.com/de/produkte/2900931>



## Plug-in module

Plug-in module - RIF-LV-12-24 UC - 2900942

<https://www.phoenixcontact.com/de/produkte/2900942>



Plug-in module, for mounting on RIF-1, RIF-2, RIF-3, and RIF-4, with varistor and yellow LED, input voltage: 12 V AC ... 24 V AC / DC  $\pm 20$  %

---

## DIN rail, unperforated

DIN rail, unperforated - NS 35/15 AL UNPERF 2000MM - 1201756

<https://www.phoenixcontact.com/de/produkte/1201756>



DIN rail, unperforated, similar to EN 60715, material: Aluminum, uncoated, Standard profile, color: silver

# Relay base - RIF-1-BPT/2X21

2900931

<https://www.phoenixcontact.com/de/produkte/2900931>



## Plug-in module

Plug-in module - RIF-LV-48-60 UC - 2900943

<https://www.phoenixcontact.com/de/produkte/2900943>



Plug-in module, for mounting on RIF-1, RIF-2, RIF-3, and RIF-4, with varistor and yellow LED, input voltage: 48 V AC ... 60 V AC / DC  $\pm$ 20 %

---

## DIN rail perforated

DIN rail perforated - NS 35/15 ZN PERF 2000MM - 1206599

<https://www.phoenixcontact.com/de/produkte/1206599>



DIN rail perforated, similar to EN 60715, material: Steel, galvanized, Standard profile, color: silver, Pack of 25 (50 m)

# Relay base - RIF-1-BPT/2X21

2900931

<https://www.phoenixcontact.com/de/produkte/2900931>



## Plug-in module

Plug-in module - RIF-LV-120-230 AC/110 DC - 2900944

<https://www.phoenixcontact.com/de/produkte/2900944>



Plug-in module, for mounting on RIF-1, RIF-2, RIF-3, and RIF-4, with varistor and yellow LED, input voltage: 120 V AC... 230 V AC / 110 V DC  $\pm 20$  %

---

## DIN rail, unperforated

DIN rail, unperforated - NS 35/15 ZN UNPERF 2000MM - 1206586

<https://www.phoenixcontact.com/de/produkte/1206586>



DIN rail, unperforated, similar to EN 60715, material: Steel, galvanized, Standard profile, color: silver, Pack of 25 (50 m)

# Relay base - RIF-1-BPT/2X21

2900931

<https://www.phoenixcontact.com/de/produkte/2900931>



## Plug-in module

Plug-in module - RIF-V-12-24 UC - 2900945

<https://www.phoenixcontact.com/de/produkte/2900945>



Plug-in module, for mounting on RIF-1, RIF-2, RIF-3, and RIF-4, with varistor, input voltage: 12 V AC ... 24 V AC / DC  $\pm$ 20 %

---

## DIN rail, unperforated

DIN rail, unperforated - NS 35/15 CU UNPERF 2000MM-VPE 10 - 1201895

<https://www.phoenixcontact.com/de/produkte/1201895>



DIN rail, unperforated, similar to EN 60715, material: Copper, uncoated, Standard profile, color: copper-colored, Pack of 10 (20 m)



# Relay base - RIF-1-BPT/2X21

2900931

<https://www.phoenixcontact.com/de/produkte/2900931>



## Plug-in module

Plug-in module - RIF-V-48-60 UC - 2900947

<https://www.phoenixcontact.com/de/produkte/2900947>



Plug-in module, for mounting on RIF-1, RIF-2, RIF-3, and RIF-4, with varistor, input voltage: 48 V AC ... 60 V AC / DC  $\pm 20$  %

---

## End cap

End cap - NS 35/15 CAP - 1206573

<https://www.phoenixcontact.com/de/produkte/1206573>

DIN rail end piece, for DIN rail NS 35/15



# Relay base - RIF-1-BPT/2X21

2900931

<https://www.phoenixcontact.com/de/produkte/2900931>



## Plug-in module

Plug-in module - RIF-V-120-230 UC - 2900948

<https://www.phoenixcontact.com/de/produkte/2900948>



Plug-in module, for mounting on RIF-1, RIF-2, RIF-3, and RIF-4, with varistor, input voltage: 120 V AC ... 230 V AC / DC  $\pm 20\%$

---

## DIN rail, unperforated

DIN rail, unperforated - NS 35/15-2,3 UNPERF 2000MM-VPE 10 - 1201798

<https://www.phoenixcontact.com/de/produkte/1201798>



DIN rail, unperforated, acc. to EN 60715, material: Steel, galvanized, passivated with a thick layer, Standard profile 2.3 mm, color: silver, Pack of 10 (20 m)

# Relay base - RIF-1-BPT/2X21

2900931

<https://www.phoenixcontact.com/de/produkte/2900931>



## Plug-in module

Plug-in module - RIF-RC-12-24 UC - 2900949

<https://www.phoenixcontact.com/de/produkte/2900949>



Plug-in module, for mounting on RIF-1, RIF-2, RIF-3, and RIF-4, with RC element, input voltage: 12 V AC ... 24 V AC / DC  $\pm 20\%$

---

## End clamp

End clamp - CLIPFIX 35 - 3022218

<https://www.phoenixcontact.com/de/produkte/3022218>



Quick mounting end clamp for NS 35/7,5 DIN rail or NS 35/15 DIN rail, with marking option, width: 9.5 mm, color: gray

# Relay base - RIF-1-BPT/2X21

2900931

<https://www.phoenixcontact.com/de/produkte/2900931>



## Plug-in module

Plug-in module - RIF-RC-48-60 UC - 2900950

<https://www.phoenixcontact.com/de/produkte/2900950>



Plug-in module, for mounting on RIF-1, RIF-2, RIF-3, and RIF-4, with RC element, input voltage: 48 V AC ... 60 V AC / DC  $\pm 20\%$

---

## End clamp

End clamp - CLIPFIX 35-5 - 3022276

<https://www.phoenixcontact.com/de/produkte/3022276>



Quick mounting end clamp for NS 35/7,5 DIN rail or NS 35/15 DIN rail, with marking option, with parking option for FBS...5, FBS...6, KSS 5, KSS 6, width: 5.15 mm, color: gray

# Relay base - RIF-1-BPT/2X21

2900931

<https://www.phoenixcontact.com/de/produkte/2900931>



## Plug-in module

Plug-in module - RIF-RC-120-230 UC - 2900951

<https://www.phoenixcontact.com/de/produkte/2900951>



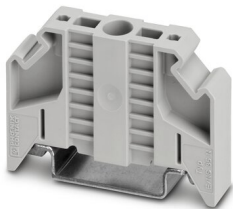
Plug-in module, for mounting on RIF-1, RIF-2, RIF-3, and RIF-4, with RC element, input voltage: 120 V AC ... 230 V AC / DC  $\pm 20$  %

---

## End clamp

End clamp - E/NS 35 N - 0800886

<https://www.phoenixcontact.com/de/produkte/0800886>



End clamp, width: 9.5 mm, color: gray

# Relay base - RIF-1-BPT/2X21

2900931

<https://www.phoenixcontact.com/de/produkte/2900931>



## Timer module

Timer module - RIF-T3-24UC - 2902647

<https://www.phoenixcontact.com/de/produkte/2902647>



Plug-in module for extending a relay module to create a timer relay, 3 time functions, 4 time ranges, for mounting on RIF-1, RIF-2, RIF-3, and RIF-4, input voltage: 12 ... 24 V DC

---

## Test plugs

Test plugs - MPS-MT - 0201744

<https://www.phoenixcontact.com/de/produkte/0201744>



Test plugs, with solder connection up to 1 mm<sup>2</sup> conductor cross section, color: gray

# Relay base - RIF-1-BPT/2X21

2900931

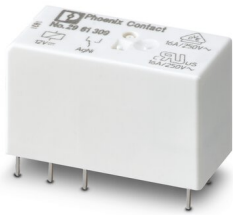
<https://www.phoenixcontact.com/de/produkte/2900931>



## Single relay

Single relay - REL-MR- 12DC/21HC - 2961309

<https://www.phoenixcontact.com/de/produkte/2961309>



Plug-in miniature power relay, with power contact for high continuous currents, 1 changeover contact, input voltage 12 V DC

---

## Insulating sleeve

Insulating sleeve - MPS-IH WH - 0201663

<https://www.phoenixcontact.com/de/produkte/0201663>

Insulating sleeve, color: white



# Relay base - RIF-1-BPT/2X21

2900931

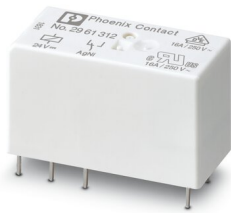
<https://www.phoenixcontact.com/de/produkte/2900931>



## Single relay

Single relay - REL-MR- 24DC/21HC - 2961312

<https://www.phoenixcontact.com/de/produkte/2961312>



Plug-in miniature power relay, with power contact for high continuous currents, 1 changeover contact, input voltage 24 V DC

---

## Insulating sleeve

Insulating sleeve - MPS-IH RD - 0201676

<https://www.phoenixcontact.com/de/produkte/0201676>

Insulating sleeve, color: red





# Relay base - RIF-1-BPT/2X21

2900931

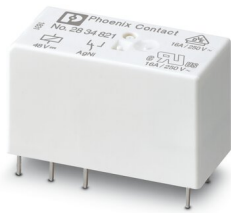
<https://www.phoenixcontact.com/de/produkte/2900931>



## Single relay

Single relay - REL-MR- 48DC/21HC - 2834821

<https://www.phoenixcontact.com/de/produkte/2834821>



Plug-in miniature power relay, with power contact for high continuous currents, 1 changeover contact, input voltage 48 V DC

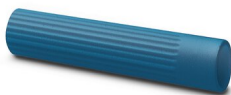
---

## Insulating sleeve

Insulating sleeve - MPS-IH BU - 0201689

<https://www.phoenixcontact.com/de/produkte/0201689>

Insulating sleeve, color: blue



# Relay base - RIF-1-BPT/2X21

2900931

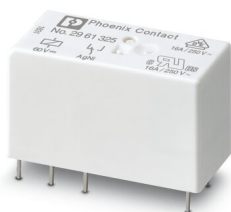
<https://www.phoenixcontact.com/de/produkte/2900931>



## Single relay

Single relay - REL-MR- 60DC/21HC - 2961325

<https://www.phoenixcontact.com/de/produkte/2961325>



Plug-in miniature power relay, with power contact for high continuous currents, 1 changeover contact, 60 V DC

---

## Insulating sleeve

Insulating sleeve - MPS-IH YE - 0201692

<https://www.phoenixcontact.com/de/produkte/0201692>

Insulating sleeve, color: yellow



# Relay base - RIF-1-BPT/2X21

2900931

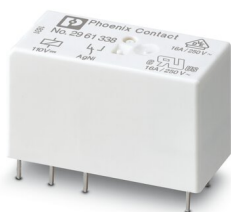
<https://www.phoenixcontact.com/de/produkte/2900931>



## Single relay

Single relay - REL-MR-110DC/21HC - 2961338

<https://www.phoenixcontact.com/de/produkte/2961338>



Plug-in miniature power relay, with power contact for high continuous currents, 1 changeover contact, input voltage 110 V DC

---

## Insulating sleeve

Insulating sleeve - MPS-IH GN - 0201702

<https://www.phoenixcontact.com/de/produkte/0201702>

Insulating sleeve, color: green



# Relay base - RIF-1-BPT/2X21

2900931

<https://www.phoenixcontact.com/de/produkte/2900931>



## Single relay

Single relay - REL-MR- 24AC/21HC - 2961406

<https://www.phoenixcontact.com/de/produkte/2961406>



Plug-in miniature power relay, with power contact for high continuous currents, 1 changeover contact, input voltage 24 V AC

---

## Insulating sleeve

Insulating sleeve - MPS-IH GY - 0201728

<https://www.phoenixcontact.com/de/produkte/0201728>

Insulating sleeve, color: gray



# Relay base - RIF-1-BPT/2X21

2900931

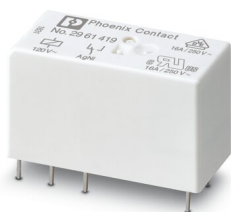
<https://www.phoenixcontact.com/de/produkte/2900931>



## Single relay

Single relay - REL-MR-120AC/21HC - 2961419

<https://www.phoenixcontact.com/de/produkte/2961419>



Plug-in miniature power relay, with power contact for high continuous currents, 1 changeover contact, input voltage 120 V AC

---

## Insulating sleeve

Insulating sleeve - MPS-IH BK - 0201731

<https://www.phoenixcontact.com/de/produkte/0201731>

Insulating sleeve, color: black



# Relay base - RIF-1-BPT/2X21

2900931

<https://www.phoenixcontact.com/de/produkte/2900931>



## Single relay

Single relay - REL-MR-230AC/21HC - 2961422

<https://www.phoenixcontact.com/de/produkte/2961422>



Plug-in miniature power relay, with power contact for high continuous currents, 1 changeover contact, input voltage 230 V AC

---

## Zack marker strip

Zack marker strip - ZB 5 :UNBEDRUCKT - 1050004

<https://www.phoenixcontact.com/de/produkte/1050004>



Zack marker strip, Strip, white, unlabeled, can be labeled with: PLOTMARK, CMS-P1-PLOTTER, mounting type: snapped, for terminal block width: 5.2 mm, lettering field size: 5.1 x 10.5 mm, Number of individual labels: 10

# Relay base - RIF-1-BPT/2X21

2900931

<https://www.phoenixcontact.com/de/produkte/2900931>



## Single relay

Single relay - REL-MR- 12DC/21HC AU - 2961532

<https://www.phoenixcontact.com/de/produkte/2961532>



Plug-in miniature power relay, with multi-layer gold contact for high continuous currents, 1 changeover contact, input voltage 12 V DC

---

## Zack marker strip

Zack marker strip - ZB 5 CUS - 0824962

<https://www.phoenixcontact.com/de/produkte/0824962>



Zack marker strip, can be ordered: Strip, white, labeled according to customer specifications, mounting type: snap into tall marker groove, for terminal block width: 5.2 mm, lettering field size: 5.15 x 10.5 mm, Number of individual labels: 10

# Relay base - RIF-1-BPT/2X21

2900931

<https://www.phoenixcontact.com/de/produkte/2900931>



## Single relay

Single relay - REL-MR- 24DC/21HC AU - 2961545

<https://www.phoenixcontact.com/de/produkte/2961545>



Plug-in miniature power relay, with multi-layer gold contact for high continuous currents, 1 changeover contact, input voltage 24 V DC

---

## Zack marker strip

Zack marker strip - ZB 5,LGS:FORTL.ZAHLEN - 1050017

<https://www.phoenixcontact.com/de/produkte/1050017>



Zack marker strip, Strip, white, labeled, printed horizontally: consecutive numbers 1 ... 10, 11 ... 20, etc. up to 491 ... 500, mounting type: snapped, for terminal block width: 5.2 mm, lettering field size: 5.15 x 10.5 mm, Number of individual labels: 10



# Relay base - RIF-1-BPT/2X21

2900931

<https://www.phoenixcontact.com/de/produkte/2900931>



## Single relay

Single relay - REL-MR-110DC/21HC AU - 2961561

<https://www.phoenixcontact.com/de/produkte/2961561>



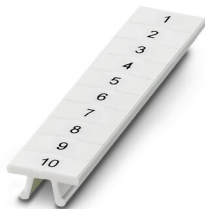
Plug-in miniature power relay, with multi-layer gold contact for high continuous currents, 1 changeover contact, input voltage 110 V DC

---

## Zack marker strip

Zack marker strip - ZB 5,QR:FORTL.ZAHLEN - 1050020

<https://www.phoenixcontact.com/de/produkte/1050020>



Zack marker strip, white, Printed vertically: consecutive numbers 1 ... 10, 11 ... 20, etc. up to 491 ... 500, mounting type: snapped, for terminal block width: 5.2 mm, lettering field size: 5.15 x 10.5 mm

# Relay base - RIF-1-BPT/2X21

2900931

<https://www.phoenixcontact.com/de/produkte/2900931>



## Single relay

Single relay - REL-MR- 24AC/21HC AU - 2961503

<https://www.phoenixcontact.com/de/produkte/2961503>



Plug-in miniature power relay, with multi-layer gold contact for high continuous currents, 1 changeover contact, input voltage 24 V AC

---

## Zack marker strip

Zack marker strip - ZB 5,LGS:GLEICHE ZAHLEN - 1050033

<https://www.phoenixcontact.com/de/produkte/1050033>



Zack marker strip, Strip, white, labeled, can be labeled with: CMS-P1-PLOTTER, printed horizontally: Identical numbers 1 or 2, etc. up to 100, mounting type: snapped, for terminal block width: 5.2 mm, lettering field size: 5.15 x 10.5 mm, Number of individual labels: 10

# Relay base - RIF-1-BPT/2X21

2900931

<https://www.phoenixcontact.com/de/produkte/2900931>



## Single relay

Single relay - REL-MR-120AC/21HC AU - 2961516

<https://www.phoenixcontact.com/de/produkte/2961516>



Plug-in miniature power relay, with multi-layer gold contact for high continuous currents, 1 changeover contact, input voltage 120 V AC

---

## Zack marker strip

Zack marker strip - ZB 5,LGS:L1-N,PE - 1050415

<https://www.phoenixcontact.com/de/produkte/1050415>



Zack marker strip, Strip, white, labeled, horizontal: L1, L2, L3, N, PE, L1, L2, L3, N, PE, mounting type: snapped, for terminal block width: 5.2 mm, lettering field size: 5.15 x 10.5 mm, Number of individual labels: 10

# Relay base - RIF-1-BPT/2X21

2900931

<https://www.phoenixcontact.com/de/produkte/2900931>



## Single relay

Single relay - REL-MR-230AC/21HC AU - 2961529

<https://www.phoenixcontact.com/de/produkte/2961529>



Plug-in miniature power relay, with multi-layer gold contact for high continuous currents, 1 changeover contact, input voltage 230 V AC

---

## Marker for terminal blocks

Marker for terminal blocks - UC-TM 5 - 0818108

<https://www.phoenixcontact.com/de/produkte/0818108>



Marker for terminal blocks, Sheet, white, unlabeled, can be labeled with: BLUEMARK ID COLOR, BLUEMARK ID, BLUEMARK CLED, PLOTMARK, CMS-P1-PLOTTER, mounting type: snapped, for terminal block width: 5.2 mm, lettering field size: 10.5 x 4.6 mm, Number of individual labels: 96

# Relay base - RIF-1-BPT/2X21

2900931

<https://www.phoenixcontact.com/de/produkte/2900931>



## Single relay

Single relay - REL-MR- 12DC/21-21 - 2961257

<https://www.phoenixcontact.com/de/produkte/2961257>



Plug-in miniature power relay, with power contact, 2 changeover contacts, input voltage 12 V DC

---

## Marker for terminal blocks

Marker for terminal blocks - UC-TM 5 CUS - 0824581

<https://www.phoenixcontact.com/de/produkte/0824581>



Marker for terminal blocks, can be ordered: by sheet, white, labeled according to customer specifications, mounting type: snap into tall marker groove, for terminal block width: 5.2 mm, lettering field size: 10.5 x 4.6 mm, Number of individual labels: 96

# Relay base - RIF-1-BPT/2X21

2900931

<https://www.phoenixcontact.com/de/produkte/2900931>



## Single relay

Single relay - REL-MR- 24DC/21-21 - 2961192

<https://www.phoenixcontact.com/de/produkte/2961192>



Plug-in miniature power relay, with power contact, 2 changeover contacts, input voltage 24 V DC

---

## Marker for terminal blocks

Marker for terminal blocks - UCT-TM 5 - 0828734

<https://www.phoenixcontact.com/de/produkte/0828734>



Marker for terminal blocks, Sheet, white, unlabeled, can be labeled with: TOPMARK NEO, TOPMARK LASER, BLUEMARK ID COLOR, BLUEMARK ID, BLUEMARK CLED, THERMOMARK PRIME, THERMOMARK CARD 2.0, THERMOMARK CARD, mounting type: snapped, for terminal block width: 5.2 mm, lettering field size: 4.6 x 10.5 mm, Number of individual labels: 72

# Relay base - RIF-1-BPT/2X21

2900931

<https://www.phoenixcontact.com/de/produkte/2900931>



## Single relay

Single relay - REL-MR- 48DC/21-21 - 2834834

<https://www.phoenixcontact.com/de/produkte/2834834>



Plug-in miniature power relay, with power contact, 2 changeover contacts, input voltage 48 V DC

---

## Marker for terminal blocks

Marker for terminal blocks - UCT-TM 5 CUS - 0829595

<https://www.phoenixcontact.com/de/produkte/0829595>



Marker for terminal blocks, can be ordered: by sheet, white, labeled according to customer specifications, mounting type: snap into tall marker groove, for terminal block width: 5.2 mm, lettering field size: 4.6 x 10.5 mm, Number of individual labels: 72

# Relay base - RIF-1-BPT/2X21

2900931

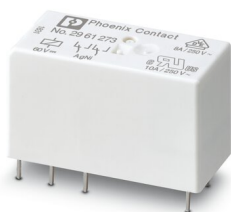
<https://www.phoenixcontact.com/de/produkte/2900931>



## Single relay

Single relay - REL-MR- 60DC/21-21 - 2961273

<https://www.phoenixcontact.com/de/produkte/2961273>



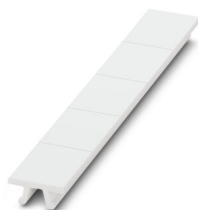
Plug-in miniature power relay, with power contact, 2 changeover contacts, input voltage 60 V DC

---

## Zack marker strip

Zack marker strip - ZB 15:UNBEDRUCKT - 0811972

<https://www.phoenixcontact.com/de/produkte/0811972>



Zack marker strip, Strip, white, unlabeled, can be labeled with: PLOTMARK, CMS-P1-PLOTTER, mounting type: snapped, for terminal block width: 15.2 mm, lettering field size: 10.5 x 15.1 mm, Number of individual labels: 5



# Relay base - RIF-1-BPT/2X21

2900931

<https://www.phoenixcontact.com/de/produkte/2900931>



## Single relay

Single relay - REL-MR-110DC/21-21 - 2961202

<https://www.phoenixcontact.com/de/produkte/2961202>



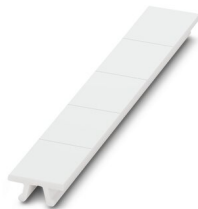
Plug-in miniature power relay, with power contact, 2 changeover contacts, input voltage 110 V DC

---

## Zack marker strip

Zack marker strip - ZB 15 CUS - 0824945

<https://www.phoenixcontact.com/de/produkte/0824945>



Zack marker strip, can be ordered: Strip, white, labeled according to customer specifications, mounting type: snap into tall marker groove, for terminal block width: 15.2 mm, lettering field size: 10.5 x 15.1 mm, Number of individual labels: 5

# Relay base - RIF-1-BPT/2X21

2900931

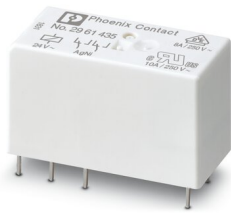
<https://www.phoenixcontact.com/de/produkte/2900931>



## Single relay

Single relay - REL-MR- 24AC/21-21 - 2961435

<https://www.phoenixcontact.com/de/produkte/2961435>



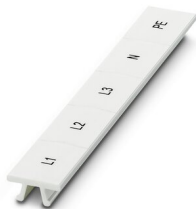
Plug-in miniature power relay, with power contact, 2 changeover contacts, input voltage 24 V AC

---

## Zack marker strip

Zack marker strip - ZB 15,LGS:L1-N,PE - 0811998

<https://www.phoenixcontact.com/de/produkte/0811998>



Zack marker strip, Strip, white, labeled, printed horizontally: L1, L2, L3, N, PE, mounting type: snapped, for terminal block width: 15.2 mm, lettering field size: 10.5 x 15.1 mm, Number of individual labels: 5

# Relay base - RIF-1-BPT/2X21

2900931

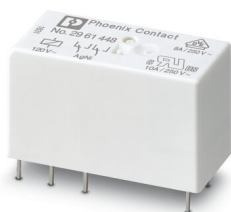
<https://www.phoenixcontact.com/de/produkte/2900931>



## Single relay

Single relay - REL-MR-120AC/21-21 - 2961448

<https://www.phoenixcontact.com/de/produkte/2961448>



Plug-in miniature power relay, with power contact, 2 changeover contacts, input voltage 120 V AC

---

## Single relay

Single relay - REL-MR-230AC/21-21 - 2961451

<https://www.phoenixcontact.com/de/produkte/2961451>



Plug-in miniature power relay, with power contact, 2 changeover contacts, input voltage 230 V AC

# Relay base - RIF-1-BPT/2X21

2900931

<https://www.phoenixcontact.com/de/produkte/2900931>



## Single relay

Single relay - REL-MR- 12DC/21-21AU - 2961299

<https://www.phoenixcontact.com/de/produkte/2961299>



Plug-in miniature power relay, with multi-layer gold contact, 2 changeover contacts, input voltage 12 V DC

---

## Single relay

Single relay - REL-MR- 24DC/21-21AU - 2961215

<https://www.phoenixcontact.com/de/produkte/2961215>



Plug-in miniature power relay, with multi-layer gold contact, 2 changeover contacts, input voltage 24 V DC

# Relay base - RIF-1-BPT/2X21

2900931

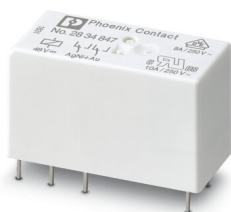
<https://www.phoenixcontact.com/de/produkte/2900931>



## Single relay

Single relay - REL-MR- 48DC/21-21AU - 2834847

<https://www.phoenixcontact.com/de/produkte/2834847>



Plug-in miniature power relay, with multi-layer gold contact, 2 changeover contacts, input voltage 48 V DC

---

## Single relay

Single relay - REL-MR- 60DC/21-21AU - 2961286

<https://www.phoenixcontact.com/de/produkte/2961286>



Plug-in miniature power relay, with multi-layer gold contact, 2 changeover contacts, input voltage 60 V DC

# Relay base - RIF-1-BPT/2X21

2900931

<https://www.phoenixcontact.com/de/produkte/2900931>



## Single relay

Single relay - REL-MR-110DC/21-21AU - 2961228

<https://www.phoenixcontact.com/de/produkte/2961228>



Plug-in miniature power relay, with multi-layer gold contact, 2 changeover contacts, input voltage 110 V DC

---

## Single relay

Single relay - REL-MR- 24AC/21-21AU - 2961464

<https://www.phoenixcontact.com/de/produkte/2961464>



Plug-in miniature power relay, with multi-layer gold contact, 2 changeover contacts, input voltage 24 V AC

# Relay base - RIF-1-BPT/2X21

2900931

<https://www.phoenixcontact.com/de/produkte/2900931>



## Single relay

Single relay - REL-MR-120AC/21-21AU - 2961477

<https://www.phoenixcontact.com/de/produkte/2961477>



Plug-in miniature power relay, with multi-layer gold contact, 2 changeover contacts, input voltage 120 V AC

---

## Single relay

Single relay - REL-MR-230AC/21-21AU - 2961480

<https://www.phoenixcontact.com/de/produkte/2961480>



Plug-in miniature power relay, with multi-layer gold contact, 2 changeover contacts, input voltage 230 V AC

# Relay base - RIF-1-BPT/2X21

2900931

<https://www.phoenixcontact.com/de/produkte/2900931>



## Single relay

Single relay - REL-MR- 24DC/21HC/MS - 2987888

<https://www.phoenixcontact.com/de/produkte/2987888>



Plug-in miniature relay, with power contact, 1 changeover contact, test button, mechanical switching position indicator, status LED, freewheeling diode, polarity A1+, A2-, input voltage 24 V DC

---

## Single relay

Single relay - REL-MR- 24AC/21HC/MS - 2987891

<https://www.phoenixcontact.com/de/produkte/2987891>



Plug-in miniature relay, with power contact, 1 changeover contact, test button, mechanical switching position indicator, status LED, input voltage 24 V AC



# Relay base - RIF-1-BPT/2X21

2900931

<https://www.phoenixcontact.com/de/produkte/2900931>



## Single relay

Single relay - REL-MR-120AC/21HC/MS - 2987901

<https://www.phoenixcontact.com/de/produkte/2987901>



Plug-in miniature relay, with power contact, 1 changeover contact, test button, mechanical switching position indicator, status LED, input voltage 120 V AC

---

## Single relay

Single relay - REL-MR-230AC/21HC/MS - 2987914

<https://www.phoenixcontact.com/de/produkte/2987914>



Plug-in miniature relay, with power contact, 1 changeover contact, test button, mechanical switching position indicator, status LED, input voltage 230 V AC

# Relay base - RIF-1-BPT/2X21

2900931

<https://www.phoenixcontact.com/de/produkte/2900931>



## Single relay

Single relay - REL-MR- 24DC/21HC AU/MS - 2987927

<https://www.phoenixcontact.com/de/produkte/2987927>



Plug-in miniature relay, with multi-layer contact with hard gold coating, 1 changeover contact, test button, mechanical switching position indicator, status LED, freewheeling diode, polarity A1+, A2-, input voltage 24 V DC

---

## Single relay

Single relay - REL-MR-230AC/21HC AU/MS - 2987930

<https://www.phoenixcontact.com/de/produkte/2987930>



Plug-in miniature relay, with multi-layer contact with hard gold coating, 1 changeover contact, test button, mechanical switching position indicator, status LED, input voltage 230 V AC

# Relay base - RIF-1-BPT/2X21

2900931

<https://www.phoenixcontact.com/de/produkte/2900931>



## Single relay

Single relay - REL-MR- 24DC/21-21/MS - 2987943

<https://www.phoenixcontact.com/de/produkte/2987943>



Plug-in miniature relay, with power contact, 2 changeover contacts, test button, mechanical switching position indicator, status LED, freewheeling diode, polarity A1+, A2, input voltage 24 V DC

---

## Single relay

Single relay - REL-MR- 24AC/21-21/MS - 2987956

<https://www.phoenixcontact.com/de/produkte/2987956>



Plug-in miniature relay, with power contact, 2 changeover contacts, test button, mechanical switching position indicator, status LED, input voltage 24 V AC

# Relay base - RIF-1-BPT/2X21

2900931

<https://www.phoenixcontact.com/de/produkte/2900931>



## Single relay

Single relay - REL-MR-120AC/21-21/MS - 2987969

<https://www.phoenixcontact.com/de/produkte/2987969>



Plug-in miniature relay, with power contact, 2 changeover contacts, test button, mechanical switching position indicator, status LED, coil voltage 120 V AC

---

## Single relay

Single relay - REL-MR-230AC/21-21/MS - 2987972

<https://www.phoenixcontact.com/de/produkte/2987972>



Plug-in miniature relay, with power contact, 2 changeover contacts, test button, mechanical switching position indicator, status LED, coil voltage 230 V AC

# Relay base - RIF-1-BPT/2X21

2900931

<https://www.phoenixcontact.com/de/produkte/2900931>



## Single relay

Single relay - REL-MR- 24DC/21-21AU/MS - 2987985

<https://www.phoenixcontact.com/de/produkte/2987985>



Plug-in miniature relay, with multi-layer contact with hard gold coating, 2 changeover contacts, test button, mechanical switching position indicator, status LED, freewheeling diode, polarity A1+, A2-, input voltage 24 V DC

---

## Single relay

Single relay - REL-MR-230AC/21-21AU/MS - 2987998

<https://www.phoenixcontact.com/de/produkte/2987998>



Plug-in miniature relay, with multi-layer contact with hard gold coating, 2 changeover contacts, test button, mechanical switching position indicator, status LED, coil voltage 230 V AC

# Relay base - RIF-1-BPT/2X21

2900931

<https://www.phoenixcontact.com/de/produkte/2900931>



## Miniature solid-state relay

Miniature solid-state relay - OPT- 5DC/ 24DC/ 5 - 2982113

<https://www.phoenixcontact.com/de/produkte/2982113>



Plug-in miniature solid-state relay, power solid-state relay, 1 N/O contact, input: 5 V DC, output: 3 - 33 V DC/5 A

---

## Miniature solid-state relay

Miniature solid-state relay - OPT-24DC/ 24DC/ 5 - 2982100

<https://www.phoenixcontact.com/de/produkte/2982100>



Plug-in miniature solid-state relay, power solid-state relay, 1 N/O contact, input: 24 V DC, output: 3 - 33 V DC/5 A

# Relay base - RIF-1-BPT/2X21

2900931

<https://www.phoenixcontact.com/de/produkte/2900931>



## Miniature solid-state relay

Miniature solid-state relay - OPT-60DC/ 24DC/ 5 - 2982126

<https://www.phoenixcontact.com/de/produkte/2982126>



Plug-in miniature solid-state relay, power solid-state relay, 1 N/O contact, input: 60 V DC, output: 3 - 33 V DC/5 A

---

## Miniature solid-state relay

Miniature solid-state relay - OPT- 5DC/230AC/ 2 - 2982168

<https://www.phoenixcontact.com/de/produkte/2982168>



Plug-in miniature solid-state relay, power solid-state relay, 1 N/O contact, input: 5 V DC, output: 24 - 253 V AC/2 A

# Relay base - RIF-1-BPT/2X21

2900931

<https://www.phoenixcontact.com/de/produkte/2900931>



## Miniature solid-state relay

Miniature solid-state relay - OPT-24DC/230AC/ 2 - 2982171

<https://www.phoenixcontact.com/de/produkte/2982171>



Plug-in miniature solid-state relay, power solid-state relay, 1 N/O contact, input: 24 V DC, output: 24 - 253 V AC/2 A

---

## Marker for terminal blocks

Marker for terminal blocks - UC-TM 16 - 0819217

<https://www.phoenixcontact.com/de/produkte/0819217>



Marker for terminal blocks, Sheet, white, unlabeled, can be labeled with: BLUEMARK ID COLOR, BLUEMARK ID, BLUEMARK CLED, PLOTMARK, CMS-P1-PLOTTER, mounting type: snapped, for terminal block width: 16 mm, lettering field size: 15.45 x 10.5 mm, Number of individual labels: 32



# Relay base - RIF-1-BPT/2X21

2900931

<https://www.phoenixcontact.com/de/produkte/2900931>



## Marker for terminal blocks

Marker for terminal blocks - UC-TMF 16 - 0819262

<https://www.phoenixcontact.com/de/produkte/0819262>



Marker for terminal blocks, Sheet, white, unlabeled, can be labeled with: BLUEMARK ID COLOR, BLUEMARK ID, BLUEMARK CLED, PLOTMARK, CMS-P1-PLOTTER, mounting type: snapped, for terminal block width: 16 mm, lettering field size: 15.45 x 5.1 mm, Number of individual labels: 32

---

## Marker carriers

Marker carriers - STP 5-2 - 0800967

<https://www.phoenixcontact.com/de/produkte/0800967>



Double marker carrier, snaps onto the double-level spring-cage terminal block STTB 2,5, STTB 4, PTTB 2,5, PTTB 4 can be marked with UC-TM 5, ZB 5 or UC-TMF 5, ZBF 5

---

Phoenix Contact 2022 © - all rights reserved  
<https://www.phoenixcontact.com>

PHOENIX CONTACT Deutschland GmbH  
Flachsmarktstraße 8  
D-32825 Blomberg  
+49 52 35/3-1 20 00  
[info@phoenixcontact.de](mailto:info@phoenixcontact.de)