

Protective conductor double-level terminal block - UTT 2,5-PE

3044665

<https://www.phoenixcontact.com/de/produkte/3044665>

Please be informed that the data shown in this PDF document is generated from our Online Catalog. Please find the complete data in the user documentation. Our General Terms of Use for Downloads are valid.



Protective conductor double-level terminal block, number of connections: 4, connection method: Screw connection, cross section: 0.14 mm² - 4 mm², mounting type: NS 35/7,5, NS 35/15, color: green-yellow

Your advantages

- Since there are two function shafts per level, all potential distribution tasks can be implemented quickly
- For a clear overview, each terminal point supports large-surface labeling
- As an option, the levels can be connected using the FBS-PV UT vertical bridge
- Tested for railway applications
- For example, two separate potentials can be routed side by side with the help of bridging between non-adjacent terminal blocks

Protective conductor double-level terminal block - UTT 2,5-PE



3044665

<https://www.phoenixcontact.com/de/produkte/3044665>

Commercial Data

Item number	3044665
Packing unit	50 pc
Minimum order quantity	1 pc
Sales Key	A1 - Reihenklemmen
Product Key	BE1124
Catalog Page	Page 149 (C-1-2019)
GTIN	4017918997038
Weight per Piece (including packing)	20,36 g
Weight per Piece (excluding packing)	20,36 g
Customs tariff number	85369010
Country of origin	DE

Protective conductor double-level terminal block - UTT 2,5-PE



3044665

<https://www.phoenixcontact.com/de/produkte/3044665>

Technical Data

Notes

General

Note	When establishing a connection on the open housing side of a feed-through modular terminal block of the same series and size, the block must be provided with a cover if the expected insulation voltage is >320 V.
	The max. load current must not be exceeded by the total current of all connected conductors.

Product properties

Product type	Ground terminal block
Area of application	Railway industry
	Machine building
	Plant engineering
	Process industry
Number of connections	4
Number of rows	2

Insulation characteristics

Overvoltage category	III
Degree of pollution	3

Electrical properties

Rated surge voltage	6 kV
Maximum power dissipation for nominal condition	0.77 W

Connection data

Grounding foot	Yes
Number of connections per level	2
Nominal cross section	2.5 mm ²

Level 1+2

Screw thread	M3
Note	Please observe the current carrying capacity of the DIN rails.
Tightening torque	0.5 ... 0.6 Nm
Stripping length	9 mm
Internal cylindrical gage	A3
Conductor cross section solid	0.14 mm ² ... 4 mm ²
Cross section AWG	26 ... 12
Conductor cross section flexible	0.14 mm ² ... 4 mm ²
Conductor cross section, flexible [AWG]	26 ... 12
Flexible conductor cross section flexible (ferrule, w/o plastic)	0.14 mm ² ... 2.5 mm ²

Protective conductor double-level terminal block - UTT 2,5-PE



3044665

<https://www.phoenixcontact.com/de/produkte/3044665>

sleeve)	
Flexible conductor cross section (ferrule with plastic sleeve)	0.14 mm ² ... 2.5 mm ²

Ex data

Rated data (ATEX/IECEx)

ATEX certificate	KEMA 06 ATEX 0017 U
IEC Ex certificate	IECEX KEM 06.0013 U
Identification	□ II 2 GD Ex eb IIC Gb
Operating temperature range	-60 °C ... 110 °C
Ex-certified accessories	3047293 D-UTT 2,5/4 3047303 DP-UTT 2,5/4 1205053 SZS 0,6X3,5 3022276 CLIPFIX 35-5 3022218 CLIPFIX 35

Ex connection data General

Torque range	0.5 Nm ... 0.6 Nm
Nominal cross section	2.5 mm ²
Rated cross section AWG	14
Connection capacity rigid	0.14 mm ² ... 4 mm ²
Connection capacity AWG	26 ... 12
Connection capacity flexible	0.14 mm ² ... 2.5 mm ²
Connection capacity AWG	26 ... 14

Dimensions

Width	5.2 mm
End cover width	2.2 mm
Height	64.4 mm
Height NS 35/15	72.5 mm
Height NS 35/7,5	65 mm
Length	69.9 mm

Material specifications

Color	green-yellow
Flammability rating according to UL 94	V0
Insulating material group	I
Insulating material	PA
Static insulating material application in cold	-60 °C
Temperature index of insulation material (DIN EN 60216-1 (VDE 0304-21))	130 °C
Relative insulation material temperature index (Elec., UL 746 B)	130 °C
Fire protection for rail vehicles (DIN EN 45545-2) R22	HL 1 - HL 3
Fire protection for rail vehicles (DIN EN 45545-2) R23	HL 1 - HL 3

Protective conductor double-level terminal block - UTT 2,5-PE



3044665

<https://www.phoenixcontact.com/de/produkte/3044665>

Fire protection for rail vehicles (DIN EN 45545-2) R24	HL 1 - HL 3
Fire protection for rail vehicles (DIN EN 45545-2) R26	HL 1 - HL 3
Calorimetric heat release NFPA 130 (ASTM E 1354)	28 MJ/kg
Surface flammability NFPA 130 (ASTM E 162)	passed
Specific optical density of smoke NFPA 130 (ASTM E 662)	passed
Smoke gas toxicity NFPA 130 (SMP 800C)	passed

Mechanical properties

Mechanical data

Open side panel	Yes
-----------------	-----

Environmental and real-life conditions

Oscillation/broadband noise

Specification	DIN EN 50155 (VDE 0115-200):2018-05
Spectrum	Service life test category 2, bogie-mounted
Frequency	$f_1 = 5 \text{ Hz}$ to $f_2 = 250 \text{ Hz}$
ASD level	6.12 (m/s ²) ² /Hz
Acceleration	3.12g
Test duration per axis	5 h
Test directions	X-, Y- and Z-axis

Shocks

Specification	DIN EN 50155 (VDE 0115-200):2008-03
Pulse shape	Half-sine
Acceleration	30g
Shock duration	18 ms
Number of shocks per direction	3
Test directions	X-, Y- and Z-axis (pos. and neg.)

Ambient conditions

Ambient temperature (operation)	-60 °C ... 105 °C (max. short-term operating temperature RTI Elec.)
Ambient temperature (storage/transport)	-25 °C ... 60 °C (for a short time, not exceeding 24 h, -60 °C to +70 °C)
Ambient temperature (assembly)	-5 °C ... 70 °C
Ambient temperature (actuation)	-5 °C ... 70 °C
Permissible humidity (storage/transport)	30 % ... 70 %

Standards and regulations

Connection in acc. with standard	IEC 60947-7-2
----------------------------------	---------------

Mounting

Mounting type	NS 35/7,5
	NS 35/15

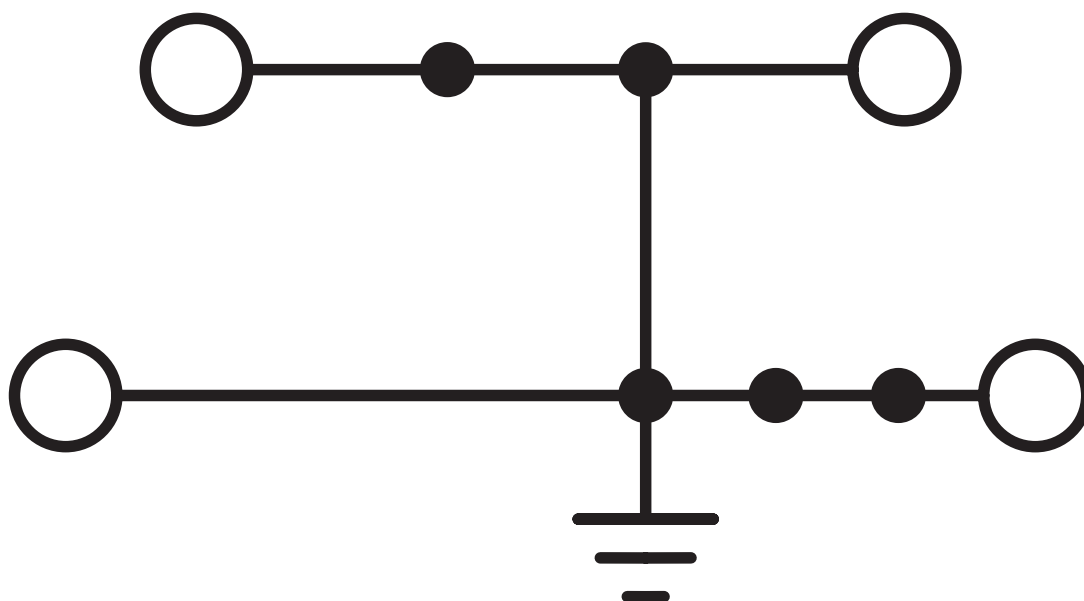
Protective conductor double-level terminal block - UTT 2,5-PE

3044665

<https://www.phoenixcontact.com/de/produkte/3044665>

Drawings

Circuit diagram



Protective conductor double-level terminal block - UTT 2,5-PE



3044665

<https://www.phoenixcontact.com/de/produkte/3044665>

Approvals

DNV

Approval ID: TAE00001S9



CSA

Approval ID: 13631

Nominal Voltage U_N

Nominal Current I_N

Cross Section AWG

Cross Section mm^2

26 - 12

-



EAC

Approval ID: RU C-DE.BL08.B.00534



cULus Recognized

Approval ID: E60425

Nominal Voltage U_N

Nominal Current I_N

Cross Section AWG

Cross Section mm^2

Use group B

26 - 12

-

Use group C

26 - 12

-

Use group D

26 - 12

-



RS

Approval ID: 17.00013.272



PRS

Approval ID: TE/2156/880590/17



ATEX

Approval ID: KEMA06ATEX0017U



cUL Recognized

Approval ID: E192998

Nominal Voltage U_N

Nominal Current I_N

Cross Section AWG

Cross Section mm^2

Use group B

26 - 12

-

Use group C

Protective conductor double-level terminal block - UTT B 2,5-PE



3044665

<https://www.phoenixcontact.com/de/produkte/3044665>

		26 - 12	-
Use group D		26 - 12	-



EAC Ex

Approval ID: RU C-DE.HA91.B.00066



IECEx

Approval ID: IECEx KEM 06.0013U



UL Recognized

Approval ID: E192998

	Nominal Voltage U_N	Nominal Current I_N	Cross Section AWG	Cross Section mm^2
Use group B			26 - 12	-
Use group C			26 - 12	-
Use group D			26 - 12	-



CCC

Approval ID: 2020322313000622



NEPSI

Approval ID: GYJ20.1194U

cULus Recognized

Protective conductor double-level terminal block - UTT 2,5-PE



3044665

<https://www.phoenixcontact.com/de/produkte/3044665>

Classifications

ECLASS

ECLASS-9.0	27141141
ECLASS-10.0.1	27141141
ECLASS-11.0	27141141

ETIM

ETIM 8.0	EC000901
----------	----------

UNSPSC

UNSPSC 21.0	39121400
-------------	----------

Protective conductor double-level terminal block - UTT2,5-PE



3044665

<https://www.phoenixcontact.com/de/produkte/3044665>

Environmental Product Compliance

REACH SVHC	Lead 7439-92-1
China RoHS	Environmentally Friendly Use Period = 50 years
	For information on hazardous substances, refer to the manufacturer's declaration available under "Downloads"

Protective conductor double-level terminal block - UTT 2,5-PE

3044665

<https://www.phoenixcontact.com/de/produkte/3044665>

Accessories

Plug-in bridge

Plug-in bridge - FBS 2-5 - 3030161

<https://www.phoenixcontact.com/de/produkte/3030161>



Plug-in bridge, pitch: 5.2 mm, color: red

Plug-in bridge

Plug-in bridge - FBS 3-5 - 3030174

<https://www.phoenixcontact.com/de/produkte/3030174>



Plug-in bridge, pitch: 5.2 mm, color: red

Protective conductor double-level terminal block - UTT2B 2,5-PE

3044665

<https://www.phoenixcontact.com/de/produkte/3044665>

Plug-in bridge

Plug-in bridge - FBS 4-5 - 3030187

<https://www.phoenixcontact.com/de/produkte/3030187>

Plug-in bridge, pitch: 5.2 mm, color: red



Plug-in bridge

Plug-in bridge - FBS 5-5 - 3030190

<https://www.phoenixcontact.com/de/produkte/3030190>

Plug-in bridge, pitch: 5.2 mm, color: red



Protective conductor double-level terminal block - UTT2B 2,5-PE

3044665

<https://www.phoenixcontact.com/de/produkte/3044665>

Plug-in bridge

Plug-in bridge - FBS 10-5 - 3030213

<https://www.phoenixcontact.com/de/produkte/3030213>



Plug-in bridge, pitch: 5.2 mm, color: red

Plug-in bridge

Plug-in bridge - FBS 20-5 - 3030226

<https://www.phoenixcontact.com/de/produkte/3030226>



Plug-in bridge, pitch: 5.2 mm, color: red

Protective conductor double-level terminal block - UTT2B 2,5-PE

3044665

<https://www.phoenixcontact.com/de/produkte/3044665>

Plug-in bridge

Plug-in bridge - FBS 50-5 - 3038930

<https://www.phoenixcontact.com/de/produkte/3038930>

Plug-in bridge, pitch: 5.2 mm, color: red



Plug-in bridge

Plug-in bridge - FBS 2-5 BU - 3036877

<https://www.phoenixcontact.com/de/produkte/3036877>

Plug-in bridge, pitch: 5.2 mm, color: blue



Protective conductor double-level terminal block - UTT2B 2,5-PE

3044665

<https://www.phoenixcontact.com/de/produkte/3044665>

Plug-in bridge

Plug-in bridge - FBS 3-5 BU - 3036880

<https://www.phoenixcontact.com/de/produkte/3036880>

Plug-in bridge, pitch: 5.2 mm, color: blue



Plug-in bridge

Plug-in bridge - FBS 4-5 BU - 3036893

<https://www.phoenixcontact.com/de/produkte/3036893>

Plug-in bridge, pitch: 5.2 mm, color: blue



Protective conductor double-level terminal block - UTT2B 2,5-PE

3044665

<https://www.phoenixcontact.com/de/produkte/3044665>

Plug-in bridge

Plug-in bridge - FBS 5-5 BU - 3036903

<https://www.phoenixcontact.com/de/produkte/3036903>



Plug-in bridge, pitch: 5.2 mm, color: blue

Plug-in bridge

Plug-in bridge - FBS 10-5 BU - 3036916

<https://www.phoenixcontact.com/de/produkte/3036916>



Plug-in bridge, pitch: 5.2 mm, color: blue

Protective conductor double-level terminal block - UTT 2,5-PE

3044665

<https://www.phoenixcontact.com/de/produkte/3044665>

Plug-in bridge

Plug-in bridge - FBS 20-5 BU - 3036929

<https://www.phoenixcontact.com/de/produkte/3036929>

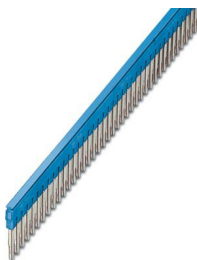


Plug-in bridge, pitch: 5.2 mm, color: blue

Plug-in bridge

Plug-in bridge - FBS 50-5 BU - 3032114

<https://www.phoenixcontact.com/de/produkte/3032114>



Plug-in bridge, Version with single- or double-sided cutting edge. Please keep in mind the possible impact on touch protection as well as air clearances and creepage distances., pitch: 5.2 mm, color: blue

Protective conductor double-level terminal block - UTT 2,5-PE

3044665

<https://www.phoenixcontact.com/de/produkte/3044665>

End cover

End cover - D-UTT 2,5/4 - 3047293

<https://www.phoenixcontact.com/de/produkte/3047293>



End cover, length: 69.9 mm, width: 2.2 mm, height: 57.5 mm, color: gray

DIN rail perforated

DIN rail perforated - NS 35/ 7,5 PERF 2000MM - 0801733

<https://www.phoenixcontact.com/de/produkte/0801733>



DIN rail perforated, acc. to EN 60715, material: Steel, galvanized, passivated with a thick layer, Standard profile, color: silver, Pack of 25 (50 m)

Protective conductor double-level terminal block - UTT 2,5-PE



3044665

<https://www.phoenixcontact.com/de/produkte/3044665>

Spacer plate

Spacer plate - DP-UTT 2,5/4 - 3047303

<https://www.phoenixcontact.com/de/produkte/3047303>

Spacer plate, length: 69.9 mm, width: 2.6 mm, height: 33 mm, color: gray



DIN rail, unperforated

DIN rail, unperforated - NS 35/ 7,5 UNPERF 2000MM - 0801681

<https://www.phoenixcontact.com/de/produkte/0801681>

DIN rail, unperforated, acc. to EN 60715, material: Steel, galvanized, passivated with a thick layer, Standard profile, color: silver, Pack of 25 (50 m)



Protective conductor double-level terminal block - UTT 2,5-PE

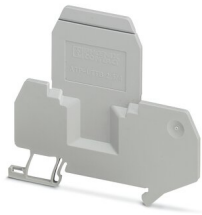
3044665

<https://www.phoenixcontact.com/de/produkte/3044665>

Partition plate

Partition plate - ATP-UTT 2,5/4 - 3047316

<https://www.phoenixcontact.com/de/produkte/3047316>



Partition plate, length: 74.3 mm, width: 2.2 mm, height: 70 mm, color: gray

DIN rail perforated

DIN rail perforated - NS 35/ 7,5 WH PERF 2000MM - 1204119

<https://www.phoenixcontact.com/de/produkte/1204119>



DIN rail perforated, acc. to EN 60715, material: Steel, Galvanized, white passivated, Standard profile, color: silver, Pack of 25 (50 m)

Protective conductor double-level terminal block - UTT 2,5-PE



3044665

<https://www.phoenixcontact.com/de/produkte/3044665>

Screwdriver

Screwdriver - SZS 0,6X3,5 - 1205053

<https://www.phoenixcontact.com/de/produkte/1205053>



Actuation tool, for ST terminal blocks, insulated, also suitable for use as a bladed screwdriver, size: 0.6 x 3.5 x 100 mm, 2-component grip, with non-slip grip

DIN rail, unperforated

DIN rail, unperforated - NS 35/ 7,5 WH UNPERF 2000MM-VPE 10 - 1204122

<https://www.phoenixcontact.com/de/produkte/1204122>



DIN rail, unperforated, acc. to EN 60715, material: Steel, Galvanized, white passivated, Standard profile, color: silver, Pack of 10 (20 m)

Protective conductor double-level terminal block - UTT 2,5-PE

3044665

<https://www.phoenixcontact.com/de/produkte/3044665>

Marker pen

Marker pen - X-PEN 0,35 - 0811228

<https://www.phoenixcontact.com/de/produkte/0811228>



Marker pen without ink cartridge, for manual labeling of markers, labeling extremely wipe-proof, line thickness 0.35 mm

DIN rail, unperforated

DIN rail, unperforated - NS 35/ 7,5 AL UNPERF 2000MM - 0801704

<https://www.phoenixcontact.com/de/produkte/0801704>



DIN rail, unperforated, acc. to EN 60715, material: Aluminum, uncoated, Standard profile, color: silver, Pack of 25 (50 m)

Protective conductor double-level terminal block - UTT 2,5-PE

3044665

<https://www.phoenixcontact.com/de/produkte/3044665>

Wire bridge

Wire bridge - FBSW 2-5/250MM - 3030172

<https://www.phoenixcontact.com/de/produkte/3030172>

Wire bridge, color: red/black



DIN rail perforated

DIN rail perforated - NS 35/ 7,5 ZN PERF 2000MM - 1206421

<https://www.phoenixcontact.com/de/produkte/1206421>



DIN rail perforated, acc. to EN 60715, material: Steel, galvanized, Standard profile, color: silver, Pack of 25 (50 m)

Protective conductor double-level terminal block - UTT 2,5-PE

3044665

<https://www.phoenixcontact.com/de/produkte/3044665>

Wire bridge

Wire bridge - FBSW 2-5/60MM - 3030170

<https://www.phoenixcontact.com/de/produkte/3030170>

Wire bridge, Not suitable for railway applications, color: red/black



DIN rail, unperforated

DIN rail, unperforated - NS 35/ 7,5 ZN UNPERF 2000MM - 1206434

<https://www.phoenixcontact.com/de/produkte/1206434>



DIN rail, unperforated, acc. to EN 60715, material: Steel, galvanized, Standard profile, color: silver, Pack of 25 (50 m)

Protective conductor double-level terminal block - UTT2,5-PE

3044665

<https://www.phoenixcontact.com/de/produkte/3044665>

Wire bridge

Wire bridge - FBSW 2-5/110MM - 3030171

<https://www.phoenixcontact.com/de/produkte/3030171>

Wire bridge, color: red/black



DIN rail, unperforated

DIN rail, unperforated - NS 35/ 7,5 CU UNPERF 2000MM-VPE 10 - 0801762

<https://www.phoenixcontact.com/de/produkte/0801762>



DIN rail, unperforated, acc. to EN 60715, material: Copper, uncoated, Standard profile, color: copper-colored, Pack of 10 (20 m)

Protective conductor double-level terminal block - UTT 2,5-PE

3044665

<https://www.phoenixcontact.com/de/produkte/3044665>

Screwdriver

Screwdriver - SF-SL 0,6X3,5-100 S-VDE - 1212587

<https://www.phoenixcontact.com/de/produkte/1212587>



Actuation tool, for ST terminal blocks, VDE insulated, with slimmer insulation integrated in the blade, also suitable for use as a bladed screwdriver, size: 0.6 x 3.5 x 100 mm, 2-component grip, with non-slip grip

End cap

End cap - NS 35/ 7,5 CAP - 1206560

<https://www.phoenixcontact.com/de/produkte/1206560>

DIN rail end piece, for DIN rail NS 35/7.5



Protective conductor double-level terminal block - UTT 2,5-PE

3044665

<https://www.phoenixcontact.com/de/produkte/3044665>

Zack marker strip

Zack marker strip - ZB 5 :UNBEDRUCKT - 1050004

<https://www.phoenixcontact.com/de/produkte/1050004>



Zack marker strip, Strip, white, unlabeled, can be labeled with: PLOTMARK, CMS-P1-PLOTTER, mounting type: snapped, for terminal block width: 5.2 mm, lettering field size: 5.1 x 10.5 mm, Number of individual labels: 10

Zack marker strip

Zack marker strip - ZB 5 CUS - 0824962

<https://www.phoenixcontact.com/de/produkte/0824962>



Zack marker strip, can be ordered: Strip, white, labeled according to customer specifications, mounting type: snap into tall marker groove, for terminal block width: 5.2 mm, lettering field size: 5.15 x 10.5 mm, Number of individual labels: 10

Protective conductor double-level terminal block - UTT 2,5-PE

3044665

<https://www.phoenixcontact.com/de/produkte/3044665>

Zack marker strip

Zack marker strip - ZB 5,LGS:FORTL.ZAHLEN - 1050017

<https://www.phoenixcontact.com/de/produkte/1050017>

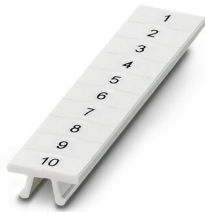


Zack marker strip, Strip, white, labeled, printed horizontally: consecutive numbers 1 ... 10, 11 ... 20, etc. up to 491 ... 500, mounting type: snapped, for terminal block width: 5.2 mm, lettering field size: 5.15 x 10.5 mm, Number of individual labels: 10

Zack marker strip

Zack marker strip - ZB 5,QR:FORTL.ZAHLEN - 1050020

<https://www.phoenixcontact.com/de/produkte/1050020>



Zack marker strip, white, Printed vertically: consecutive numbers 1 ... 10, 11 ... 20, etc. up to 491 ... 500, mounting type: snapped, for terminal block width: 5.2 mm, lettering field size: 5.15 x 10.5 mm

Protective conductor double-level terminal block - UTT 2,5-PE

3044665

<https://www.phoenixcontact.com/de/produkte/3044665>

Zack marker strip

Zack marker strip - ZB 5,LGS:GLEICHE ZAHLEN - 1050033

<https://www.phoenixcontact.com/de/produkte/1050033>



Zack marker strip, Strip, white, labeled, can be labeled with: CMS-P1-PLOTTER, printed horizontally: Identical numbers 1 or 2, etc. up to 100, mounting type: snapped, for terminal block width: 5.2 mm, lettering field size: 5.15 x 10.5 mm, Number of individual labels: 10

Zack marker strip

Zack marker strip - ZB 5,LGS:L1-N,PE - 1050415

<https://www.phoenixcontact.com/de/produkte/1050415>



Zack marker strip, Strip, white, labeled, horizontal: L1, L2, L3, N, PE, L1, L2, L3, N, PE, mounting type: snapped, for terminal block width: 5.2 mm, lettering field size: 5.15 x 10.5 mm, Number of individual labels: 10

Protective conductor double-level terminal block - UTT 2,5-PE

3044665

<https://www.phoenixcontact.com/de/produkte/3044665>

Marker for terminal blocks

Marker for terminal blocks - UC-TM 5 - 0818108

<https://www.phoenixcontact.com/de/produkte/0818108>



Marker for terminal blocks, Sheet, white, unlabeled, can be labeled with: BLUEMARK ID COLOR, BLUEMARK ID, BLUEMARK CLED, PLOTMARK, CMS-P1-PLOTTER, mounting type: snapped, for terminal block width: 5.2 mm, lettering field size: 10.5 x 4.6 mm, Number of individual labels: 96

Marker for terminal blocks

Marker for terminal blocks - UC-TM 5 CUS - 0824581

<https://www.phoenixcontact.com/de/produkte/0824581>



Marker for terminal blocks, can be ordered: by sheet, white, labeled according to customer specifications, mounting type: snap into tall marker groove, for terminal block width: 5.2 mm, lettering field size: 10.5 x 4.6 mm, Number of individual labels: 96

Protective conductor double-level terminal block - UTT 2,5-PE

3044665

<https://www.phoenixcontact.com/de/produkte/3044665>

Marker for terminal blocks

Marker for terminal blocks - UCT-TM 5 - 0828734

<https://www.phoenixcontact.com/de/produkte/0828734>



Marker for terminal blocks, Sheet, white, unlabeled, can be labeled with: TOPMARK NEO, TOPMARK LASER, BLUEMARK ID COLOR, BLUEMARK ID, BLUEMARK CLED, THERMOMARK PRIME, THERMOMARK CARD 2.0, THERMOMARK CARD, mounting type: snapped, for terminal block width: 5.2 mm, lettering field size: 4.6 x 10.5 mm, Number of individual labels: 72

Marker for terminal blocks

Marker for terminal blocks - UCT-TM 5 CUS - 0829595

<https://www.phoenixcontact.com/de/produkte/0829595>



Marker for terminal blocks, can be ordered: by sheet, white, labeled according to customer specifications, mounting type: snap into tall marker groove, for terminal block width: 5.2 mm, lettering field size: 4.6 x 10.5 mm, Number of individual labels: 72

Protective conductor double-level terminal block - UTT 2,5-PE

3044665

<https://www.phoenixcontact.com/de/produkte/3044665>

Test plugs

Test plugs - MPS-MT - 0201744

<https://www.phoenixcontact.com/de/produkte/0201744>



Test plugs, with solder connection up to 1 mm² conductor cross section, color:
gray

Insulating sleeve

Insulating sleeve - MPS-IH WH - 0201663

<https://www.phoenixcontact.com/de/produkte/0201663>



Insulating sleeve, color: white

Protective conductor double-level terminal block - UTT 2,5-PE

3044665

<https://www.phoenixcontact.com/de/produkte/3044665>

Insulating sleeve

Insulating sleeve - MPS-IH RD - 0201676

<https://www.phoenixcontact.com/de/produkte/0201676>

Insulating sleeve, color: red

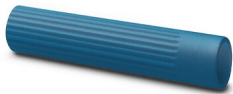


Insulating sleeve

Insulating sleeve - MPS-IH BU - 0201689

<https://www.phoenixcontact.com/de/produkte/0201689>

Insulating sleeve, color: blue



Protective conductor double-level terminal block - UTT 2,5-PE

3044665

<https://www.phoenixcontact.com/de/produkte/3044665>

Insulating sleeve

Insulating sleeve - MPS-IH YE - 0201692

<https://www.phoenixcontact.com/de/produkte/0201692>

Insulating sleeve, color: yellow



Insulating sleeve

Insulating sleeve - MPS-IH GN - 0201702

<https://www.phoenixcontact.com/de/produkte/0201702>

Insulating sleeve, color: green



Protective conductor double-level terminal block - UTT 2,5-PE

3044665

<https://www.phoenixcontact.com/de/produkte/3044665>

Insulating sleeve

Insulating sleeve - MPS-IH GY - 0201728

<https://www.phoenixcontact.com/de/produkte/0201728>

Insulating sleeve, color: gray



Insulating sleeve

Insulating sleeve - MPS-IH BK - 0201731

<https://www.phoenixcontact.com/de/produkte/0201731>

Insulating sleeve, color: black



Protective conductor double-level terminal block - UTT 2,5-PE

3044665

<https://www.phoenixcontact.com/de/produkte/3044665>

Test adapter

Test adapter - PAI-4-FIX-5/6 BU - 3035975

<https://www.phoenixcontact.com/de/produkte/3035975>



4 mm test adapter, for terminal blocks with 5.2 mm and 6.2 mm pitch

Test adapter

Test adapter - PAI-4-FIX-5/6 OG - 3035974

<https://www.phoenixcontact.com/de/produkte/3035974>



4 mm test adapter, for terminal blocks with 5.2 mm and 6.2 mm pitch

Protective conductor double-level terminal block - UTT 2,5-PE

3044665

<https://www.phoenixcontact.com/de/produkte/3044665>

Test adapter

Test adapter - PAI-4-FIX-5/6 YE - 3035977

<https://www.phoenixcontact.com/de/produkte/3035977>



4 mm test adapter, for terminal blocks with 5.2 mm and 6.2 mm pitch

Test adapter

Test adapter - PAI-4-FIX-5/6 RD - 3035976

<https://www.phoenixcontact.com/de/produkte/3035976>



4 mm test adapter, for terminal blocks with 5.2 mm and 6.2 mm pitch

Protective conductor double-level terminal block - UTT 2,5-PE

3044665

<https://www.phoenixcontact.com/de/produkte/3044665>

Test adapter

Test adapter - PAI-4-FIX-5/6 GN - 3035978

<https://www.phoenixcontact.com/de/produkte/3035978>



4 mm test adapter, for terminal blocks with 5.2 mm and 6.2 mm pitch

Test adapter

Test adapter - PAI-4-FIX-5/6 BK - 3035980

<https://www.phoenixcontact.com/de/produkte/3035980>



4 mm test adapter, for terminal blocks with 5.2 mm and 6.2 mm pitch

Protective conductor double-level terminal block - UTT 2,5-PE

3044665

<https://www.phoenixcontact.com/de/produkte/3044665>

Test adapter

Test adapter - PAI-4-FIX-5/6 GY - 3035982

<https://www.phoenixcontact.com/de/produkte/3035982>



4 mm test adapter, for terminal blocks with 5.2 mm and 6.2 mm pitch

Test adapter

Test adapter - PAI-4-FIX-5/6 VT - 3035979

<https://www.phoenixcontact.com/de/produkte/3035979>



4 mm test adapter, for terminal blocks with 5.2 mm and 6.2 mm pitch

Protective conductor double-level terminal block - UTT 2,5-PE

3044665

<https://www.phoenixcontact.com/de/produkte/3044665>

Test adapter

Test adapter - PAI-4-FIX-5/6 BN - 3035981

<https://www.phoenixcontact.com/de/produkte/3035981>



4 mm test adapter, for terminal blocks with 5.2 mm and 6.2 mm pitch

Test adapter

Test adapter - PAI-4-FIX-5/6 WH - 3035983

<https://www.phoenixcontact.com/de/produkte/3035983>



4 mm test adapter, for terminal blocks with 5.2 mm and 6.2 mm pitch

Protective conductor double-level terminal block - UTT 2,5-PE

3044665

<https://www.phoenixcontact.com/de/produkte/3044665>

Test plugs

Test plugs - PS-5 - 3030983

<https://www.phoenixcontact.com/de/produkte/3030983>



Test plugs, Modular test plug, color: red

Spacer plate

Spacer plate - DP PS-5 - 3036725

<https://www.phoenixcontact.com/de/produkte/3036725>



Spacer plate, length: 22.4 mm, width: 5.2 mm, height: 29 mm, number of positions: 1, color: red

Protective conductor double-level terminal block - UTT 2,5-PE

3044665

<https://www.phoenixcontact.com/de/produkte/3044665>

Test plugs

Test plugs - PS-5/2,3MM RD - 3038723

<https://www.phoenixcontact.com/de/produkte/3038723>

Test plugs, color: red



End clamp

End clamp - CLIPFIX 35 - 3022218

<https://www.phoenixcontact.com/de/produkte/3022218>

Quick mounting end clamp for NS 35/7,5 DIN rail or NS 35/15 DIN rail, with marking option, width: 9.5 mm, color: gray



Protective conductor double-level terminal block - UTT 2,5-PE

3044665

<https://www.phoenixcontact.com/de/produkte/3044665>

End clamp

End clamp - CLIPFIX 35-5 - 3022276

<https://www.phoenixcontact.com/de/produkte/3022276>

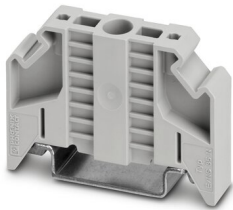


Quick mounting end clamp for NS 35/7,5 DIN rail or NS 35/15 DIN rail, with marking option, with parking option for FBS...5, FBS...6, KSS 5, KSS 6, width: 5.15 mm, color: gray

End clamp

End clamp - E/NS 35 N - 0800886

<https://www.phoenixcontact.com/de/produkte/0800886>



End clamp, width: 9.5 mm, color: gray

Phoenix Contact 2022 © - all rights reserved

<https://www.phoenixcontact.com>

PHOENIX CONTACT Deutschland GmbH

Flachsmarktstraße 8

D-32825 Blomberg

+49 52 35/3-1 20 00

info@phoenixcontact.de