

Single relay - REL-MR- 24DC/21HC/MS



2987888

<https://www.phoenixcontact.com/de/produkte/2987888>

Please be informed that the data shown in this PDF document is generated from our Online Catalog. Please find the complete data in the user documentation. Our General Terms of Use for Downloads are valid.



Plug-in miniature relay, with power contact, 1 changeover contact, test button, mechanical switching position indicator, status LED, freewheeling diode, polarity A1+, A2-, input voltage 24 V DC

Your advantages

- With detectable manual operation
- Integrated status LED
- Switching current of up to 16 A
- Mechanical switch position indicator
- DC types with integrated freewheeling diode

Single relay - REL-MR- 24DC/21HC/MS



2987888

<https://www.phoenixcontact.com/de/produkte/2987888>

Commercial Data

Item number	2987888
Packing unit	10 pc
Minimum order quantity	10 pc
Sales Key	G1 - Relais
Product Key	CK6195
Catalog Page	Page 292 (C-5-2019)
GTIN	4046356481014
Weight per Piece (including packing)	19,86 g
Weight per Piece (excluding packing)	17,64 g
Customs tariff number	85364190
Country of origin	CN

Single relay - REL-MR- 24DC/21HC/MS



2987888

<https://www.phoenixcontact.com/de/produkte/2987888>

Technical Data

Product properties

Product type	Single relay
Set comprises	2905289 RIF-1-RPT-LDP-24DC/1X21MS
	2905659 RIF-1-RSC-LDP-24DC/1X21MS
	2910514 PLC-RSC- 24DC/21HC/MS
	2910530 PLC-RPT- 24DC/21HC/MS
	2910515 PLC-RSC- 24UC/21HC/MS
	2910531 PLC-RPT- 24UC/21HC/MS
	2910516 PLC-RSC- 48DC/21HC/MS
	2910532 PLC-RPT- 48DC/21HC/MS
Mechanical service life	5x 10 ⁶ cycles

Electrical properties

Service life electrical	see diagram
Maximum power dissipation for nominal condition	0.43 W
Test voltage	5 kV AC (50 Hz, 1 min., winding/contact)

Input data

Coil side

Nominal input voltage U_N	24 V DC
Input voltage range	19.2 V DC ... 52.8 V DC
Input voltage range in reference to U_N	see diagram
Typical input current at U_N	18 mA
Typical response time	9 ms
Typical release time	6 ms

Output data

Switching

Contact type	1 changeover contact
Type of switch contact	Single contact
Drive and function	monostable
Contact material	AgNi
Maximum switching voltage	250 V AC/DC
Minimum switching voltage	12 V (at 10 mA)
Limiting continuous current	16 A
Maximum inrush current	32 A (20 ms)
Min. switching current	10 mA (at 12 V)
Interrupting rating (ohmic load) max.	4000 VA (for 250 V AC)
Switching capacity	2 A (at 24 V, DC13)
	3 A (at 24 V, AC15)

Single relay - REL-MR- 24DC/21HC/MS



2987888

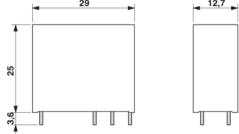
<https://www.phoenixcontact.com/de/produkte/2987888>

	3 A (at 120 V, AC15)
	3 A (at 240 V, AC15)
Motor load according to UL 508	1/2 HP, 120 V AC (N/O contact)
	1 HP, 240 V AC (N/O contact)
	1/3 HP, 120 V AC (N/C contact)
	1/2 HP, 240 V AC (N/C contact)

Connection data

Connection method	Solder connection
-------------------	-------------------

Dimensions

Dimensional drawing	
Width	12.7 mm
Height	29 mm
Depth	25 mm

Environmental and real-life conditions

Ambient conditions

Ambient temperature (operation)	-40 °C ... 70 °C
Ambient temperature (storage/transport)	-40 °C ... 85 °C

Approval data

Corrosive gas test

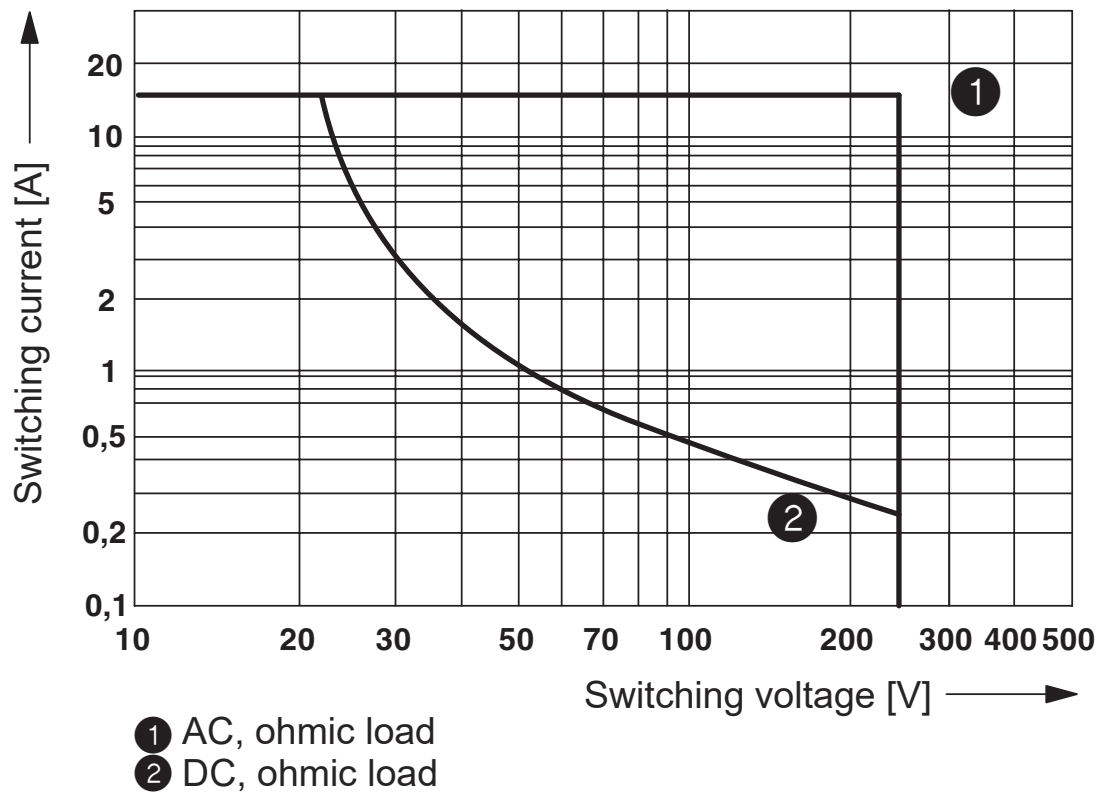
Identification	ISA-S71.04. G3 Harsh Group
	EN 60068-2-60

Standards and regulations

Standards/regulations	EN 61810-1
	VDE 0435-201
	EN 50178

Drawings

Diagram



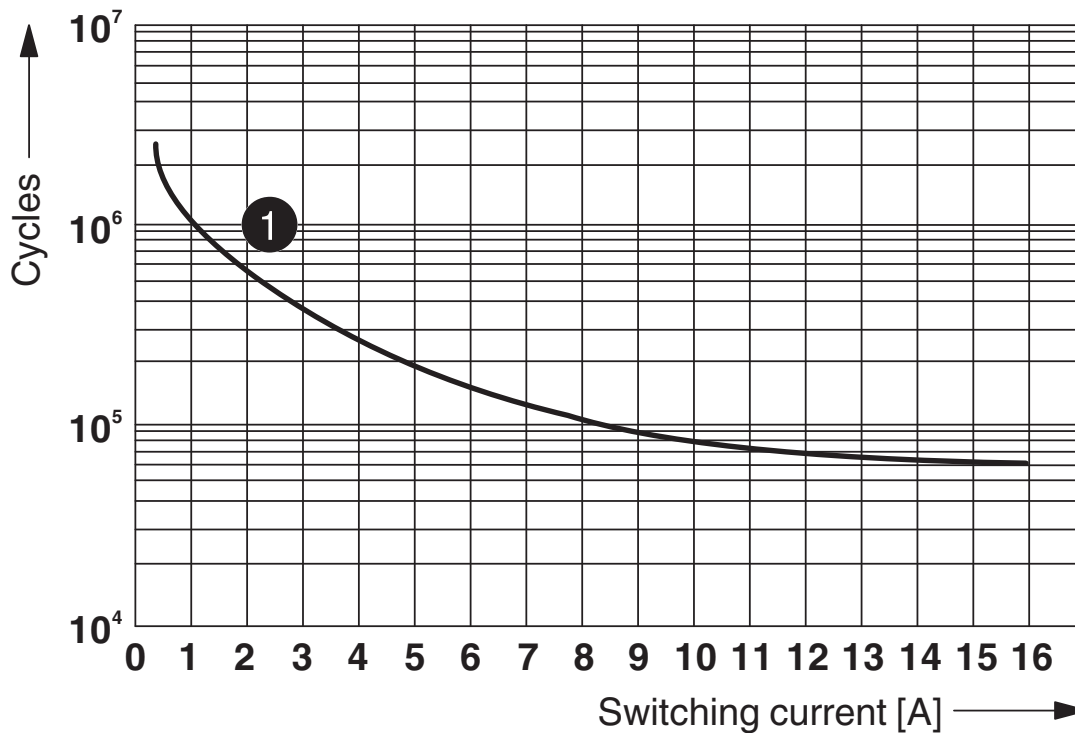
Interrupting rating

Single relay - REL-MR- 24DC/21HC/MS

2987888

<https://www.phoenixcontact.com/de/produkte/2987888>

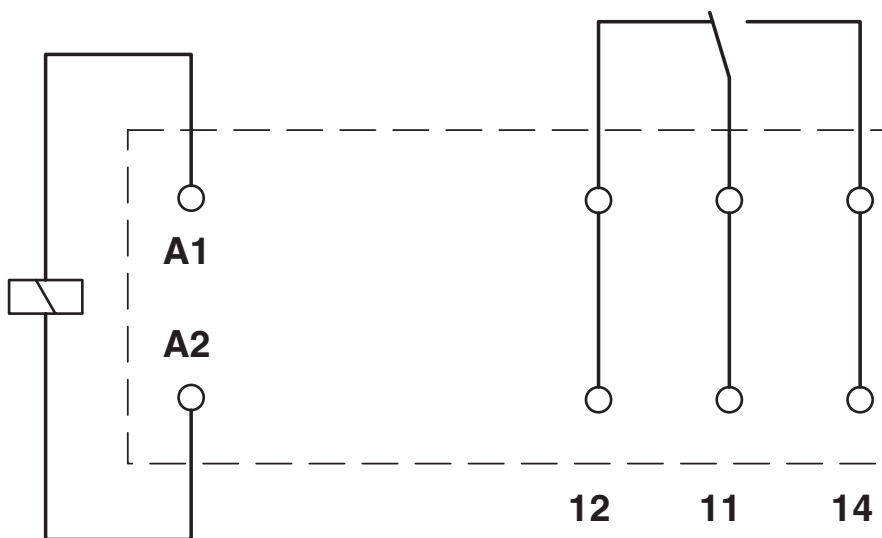
Diagram

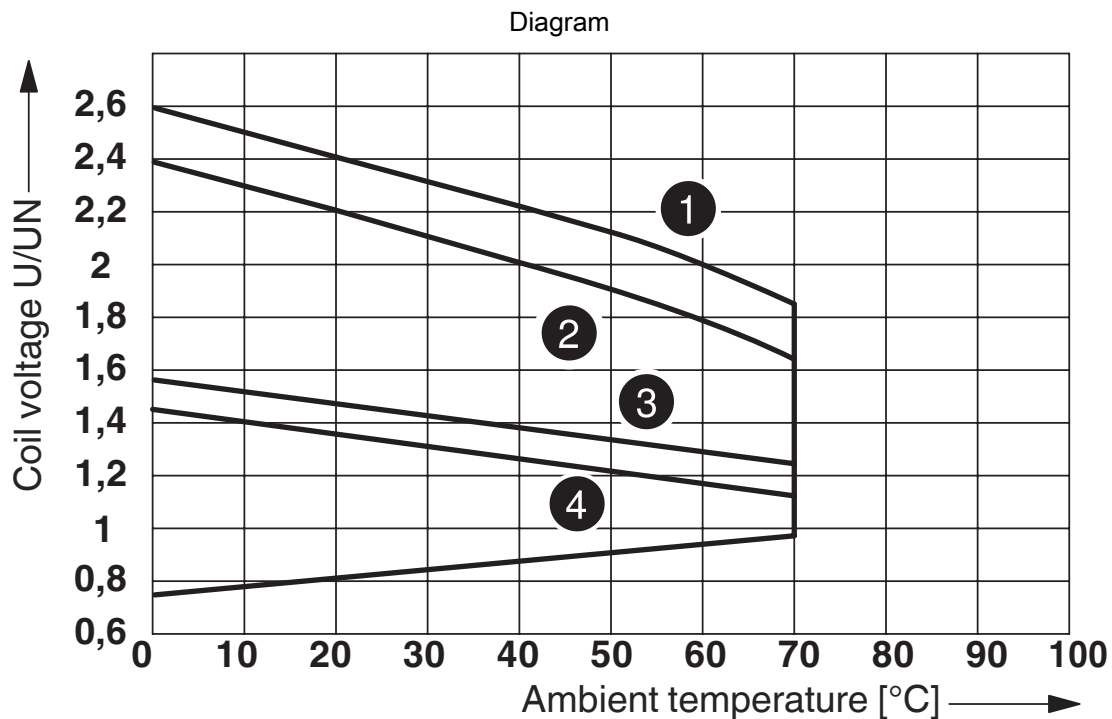


① 250 V AC, ohmic load

Electrical service life

Circuit diagram

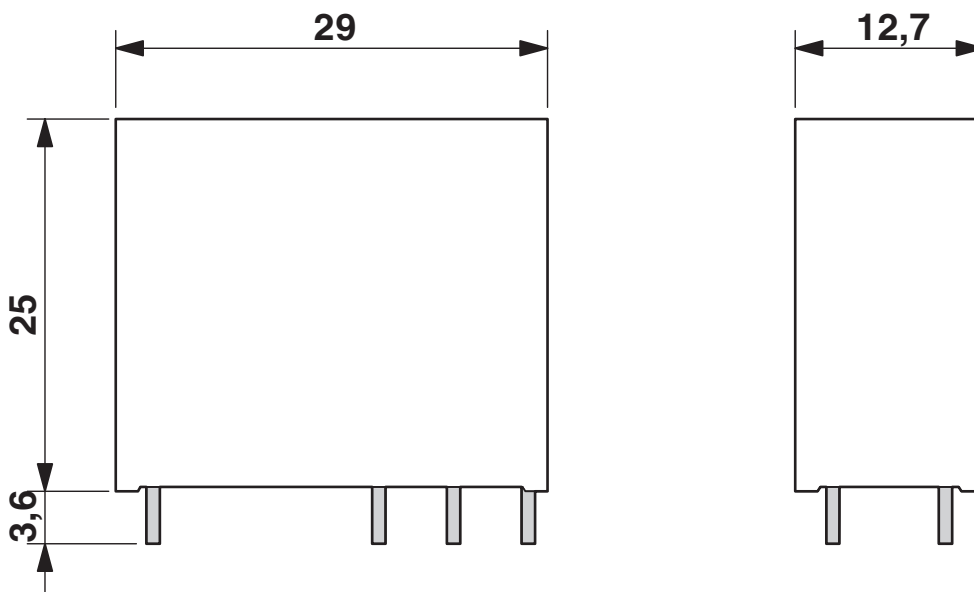




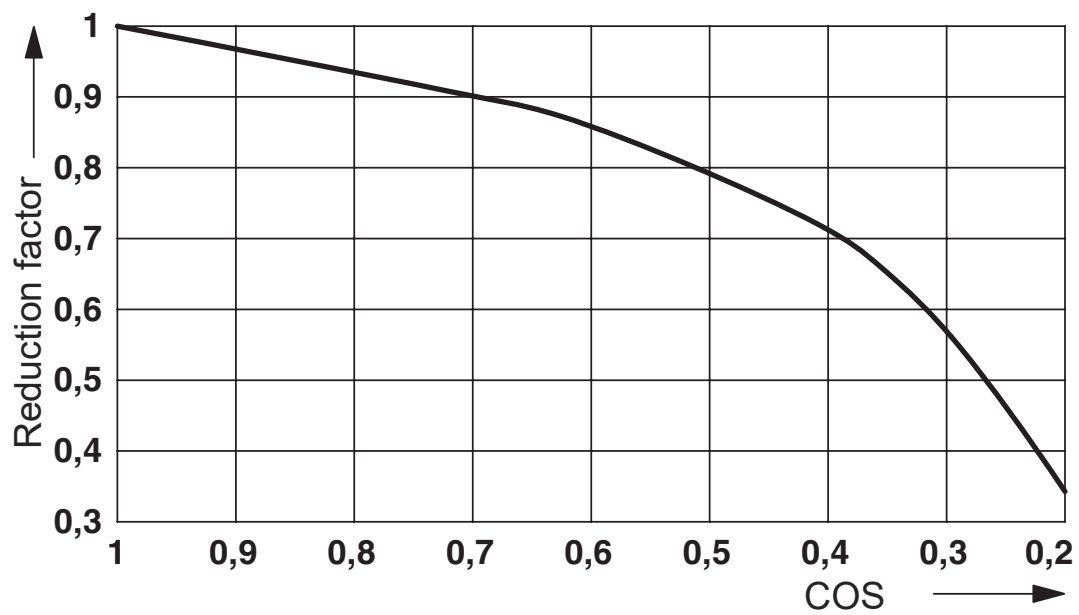
- ① DC coils, 0 A contact current
- ② DC coils, 16 A contact current
- ③ AC coils, 0 A contact current
- ④ AC coils, 16 A contact current

Operating voltage range

Dimensional drawing



Diagram



Service life reduction factor with various cos phi

Single relay - REL-MR- 24DC/21HC/MS



2987888

<https://www.phoenixcontact.com/de/produkte/2987888>

Approvals



cUL Recognized
Approval ID: FILE E 195083



UL Recognized
Approval ID: FILE E 195083



EAC
Approval ID: TR_TS_D_00573_c



EAC
Approval ID: RU*C-DE.*08.B.00010



VDE Zeichengenehmigung
Approval ID: 40027210

	Nominal Voltage U_N	Nominal Current I_N	Cross Section AWG	Cross Section mm^2
Mark approval certificate			-	-

cULus Recognized

Single relay - REL-MR- 24DC/21HC/MS



2987888

<https://www.phoenixcontact.com/de/produkte/2987888>

Classifications

ECLASS

ECLASS-9.0	27371601
ECLASS-10.0.1	27371601
ECLASS-11.0	27371601

ETIM

ETIM 8.0	EC001437
----------	----------

UNSPSC

UNSPSC 21.0	39122300
-------------	----------

Single relay - REL-MR- 24DC/21HC/MS



2987888

<https://www.phoenixcontact.com/de/produkte/2987888>

Environmental Product Compliance

China RoHS	Environmentally friendly use period: unlimited = EFUP-e
	No hazardous substances above threshold values

Single relay - REL-MR- 24DC/21HC/MS



2987888

<https://www.phoenixcontact.com/de/produkte/2987888>

Accessories

Relay base

Relay base - RIF-1-BPT/2X21 - 2900931

<https://www.phoenixcontact.com/de/produkte/2900931>

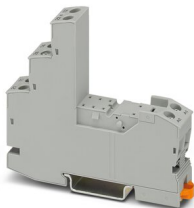


Relay base RIF-1..., for miniature power relay with 1 or 2 changeover contacts or solid-state relays of the same design, Push-in connection, plug-in option for input/interference suppression modules, for mounting on NS 35/7,5

Relay base

Relay base - RIF-1-BSC/2X21 - 2900930

<https://www.phoenixcontact.com/de/produkte/2900930>



RIF-1... relay base, for miniature power relay with 1 or 2 changeover contacts or identical solid-state relays, screw connection, plug-in option for input/interference suppression modules, for mounting on NS 35/7,5

Phoenix Contact 2022 © - all rights reserved

<https://www.phoenixcontact.com>

PHOENIX CONTACT Deutschland GmbH

Flachsmarktstraße 8

D-32825 Blomberg

+49 52 35/3-1 20 00

info@phoenixcontact.de