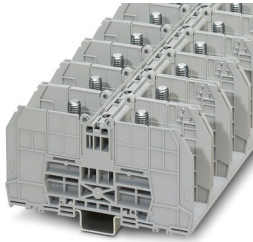


Bolt connection terminal block - RBO 10

3244614

<https://www.phoenixcontact.com/de/produkte/3244614>

Please be informed that the data shown in this PDF document is generated from our Online Catalog. Please find the complete data in the user documentation. Our General Terms of Use for Downloads are valid.



Bolt connection terminal block, nom. voltage: 1000 V, nominal current: 309 A, connection method: Bolt connection, 1 level, Rated cross section: 150 mm², mounting type: NS 35/7,5, NS 35/15, color: gray

Your advantages

- Tested for railway applications

Bolt connection terminal block - RBO 10



3244614

<https://www.phoenixcontact.com/de/produkte/3244614>

Commercial Data

Item number	3244614
Packing unit	5 pc
Minimum order quantity	1 pc
Sales Key	A1 - Reihenklennen
Product Key	BE4412
Catalog Page	Page 391 (C-1-2019)
GTIN	4046356583947
Weight per Piece (including packing)	273,9 g
Weight per Piece (excluding packing)	273,9 g
Customs tariff number	85369010
Country of origin	CN

Technical Data

Product properties

Product type	Bolt connection terminal block
Number of positions	1
Pitch	41 mm
Area of application	Railway industry
	Machine building
	Plant engineering
Number of connections	2
Number of rows	1
Potentials	1

Insulation characteristics

Overvoltage category	III
Degree of pollution	3

Electrical properties

Rated surge voltage	8 kV
Maximum power dissipation for nominal condition	9.55 W

Connection data

Number of connections per level	2
Nominal cross section	150 mm ²

1 level

Screw thread	M10
Stripping length	The stripping length depends on the specification provided by the cable lug manufacturer.
Nominal current	309 A
Maximum load current	309 A (with 150 mm ² conductor cross section)
Nominal voltage	1000 V
Nominal cross section	150 mm ²

Cable lug connection DIN 46234:1980-03

Connection in acc. with standard	DIN 46234:1980-03
Cross section	6 mm ² ... 150 mm ²
Hole diameter	10.5 mm
Width	30 mm
Bolt diameter	10 mm
Screw thread	M10
Tightening torque	10 ... 20 Nm
Connection in acc. with standard	DIN 46235:1983-07
Cross section	16 mm ² ... 150 mm ²
Hole diameter	10.5 mm

Bolt connection terminal block - RBO 10



3244614

<https://www.phoenixcontact.com/de/produkte/3244614>

Width	34 mm
Bolt diameter	10 mm
Screw thread	M10
Tightening torque	10 ... 20 Nm
Connection in acc. with standard	DIN 46237:1970-07
Cross section	6 mm ² ... 6 mm ²
Hole diameter	10.5 mm
Width	18 mm
Bolt diameter	10 mm
Screw thread	M10
Tightening torque	10 ... 20 Nm
Identification color of ring cable lugs	
Identification color of ring cable lugs : yellow	6 mm ²

Ex data

Rated data (ATEX/IECEX)

ATEX certificate	SEV 13 ATEX 0132 U
IEC Ex certificate	IECEX SEV 13.0003 U
Identification	II 2 GD Ex eb IIC
Operating temperature range	-60 °C ... 110 °C
Ex-certified accessories	3247970 HC-RBO 10 0800886 E/NS 35 N
Bridge data	309 A / 150 mm ²
Ex temperature increase	40 K (309 A / 150 mm ²)
Rated voltage	1000 V
for bridging with bridge	1100 V
Rated insulation voltage	1000 V

Ex level General

Rated current	309 A
Maximum load current	309 A
Contact resistance	0.05 mΩ

Ex connection data General

Torque range	10 Nm ... 20 Nm
Nominal cross section	150 mm ²
Rated cross section AWG	300 kcmil
Connection capacity rigid	6 mm ² ... 150 mm ²
Connection capacity AWG	10 ... 300 kcmil
Connection capacity flexible	6 mm ² ... 150 mm ²
Connection capacity AWG	10 ... 300 kcmil
2 conductors with same cross section, solid	6 mm ² ... 150 mm ²
2 conductors with the same cross-section AWG rigid	10 ... 300 kcmil
2 conductors with same cross section, stranded	6 mm ² ... 70 mm ²

Bolt connection terminal block - RBO 10

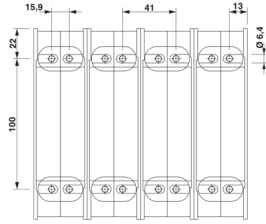
3244614

<https://www.phoenixcontact.com/de/produkte/3244614>

2 conductors with the same cross-section AWG flexible

10 ... 300 kcmil

Dimensions

Dimensional drawing	
Width	41 mm
Height NS 35/15	84.5 mm
Height NS 35/7,5	77 mm
Length	144 mm
Bolt length	31 mm
Pitch	41 mm

Material specifications

Color	gray
Flammability rating according to UL 94	V0
Insulating material group	I
Insulating material	PA
Static insulating material application in cold	-60 °C
Temperature index of insulation material (DIN EN 60216-1 (VDE 0304-21))	130 °C
Relative insulation material temperature index (Elec., UL 746 B)	130 °C
Fire protection for rail vehicles (DIN EN 45545-2) R22	HL 1 - HL 3
Fire protection for rail vehicles (DIN EN 45545-2) R23	HL 1 - HL 3
Fire protection for rail vehicles (DIN EN 45545-2) R24	HL 1 - HL 3
Fire protection for rail vehicles (DIN EN 45545-2) R26	HL 1 - HL 3
Calorimetric heat release NFPA 130 (ASTM E 1354)	28 MJ/kg
Surface flammability NFPA 130 (ASTM E 162)	passed
Specific optical density of smoke NFPA 130 (ASTM E 662)	passed
Smoke gas toxicity NFPA 130 (SMP 800C)	passed

Electrical tests

Surge voltage test

Test voltage setpoint	9.8 kV
Result	Test passed

Temperature-rise test

Requirement temperature-rise test	Increase in temperature ≤ 45 K
Result	Test passed
Short-time withstand current 150 mm ²	18 kA

Result	Test passed
Power-frequency withstand voltage	
Test voltage setpoint	2.2 kV
Result	Test passed

Mechanical properties

Mechanical data

Open side panel	No
-----------------	----

Mechanical tests

Mechanical strength

Result	Test passed
--------	-------------

Attachment on the carrier

DIN rail/fixing support	NS 35
Test force setpoint	15 N
Result	Test passed

Environmental and real-life conditions

Needle-flame test

Time of exposure	30 s
Result	Test passed

Oscillation/broadband noise

Specification	DIN EN 50155 (VDE 0115-200):2008-03
Spectrum	Service life test category 1, class B, body mounted
Frequency	$f_1 = 5 \text{ Hz}$ to $f_2 = 150 \text{ Hz}$
ASD level	$1.857 \text{ (m/s}^2\text{)}^2\text{/Hz}$
Acceleration	0.8g
Test duration per axis	5 h
Test directions	X-, Y- and Z-axis
Result	Test passed

Shocks

Specification	DIN EN 50155 (VDE 0115-200):2008-03
Pulse shape	Half-sine
Acceleration	5g
Shock duration	30 ms
Number of shocks per direction	3
Test directions	X-, Y- and Z-axis (pos. and neg.)
Result	Test passed

Ambient conditions

Ambient temperature (operation)	-60 °C ... 105 °C (max. short-term operating temperature RTI)
---------------------------------	---

Bolt connection terminal block - RBO 10



3244614

<https://www.phoenixcontact.com/de/produkte/3244614>

	Elec.)
Ambient temperature (storage/transport)	-25 °C ... 60 °C (for a short time, not exceeding 24 h, -60 °C to +70 °C)
Ambient temperature (assembly)	-5 °C ... 70 °C
Ambient temperature (actuation)	-5 °C ... 70 °C
Permissible humidity (storage/transport)	30 % ... 70 %

Standards and regulations

Connection in acc. with standard	IEC 60947-7-1
----------------------------------	---------------

Mounting

Mounting type	NS 35/7,5
	NS 35/15

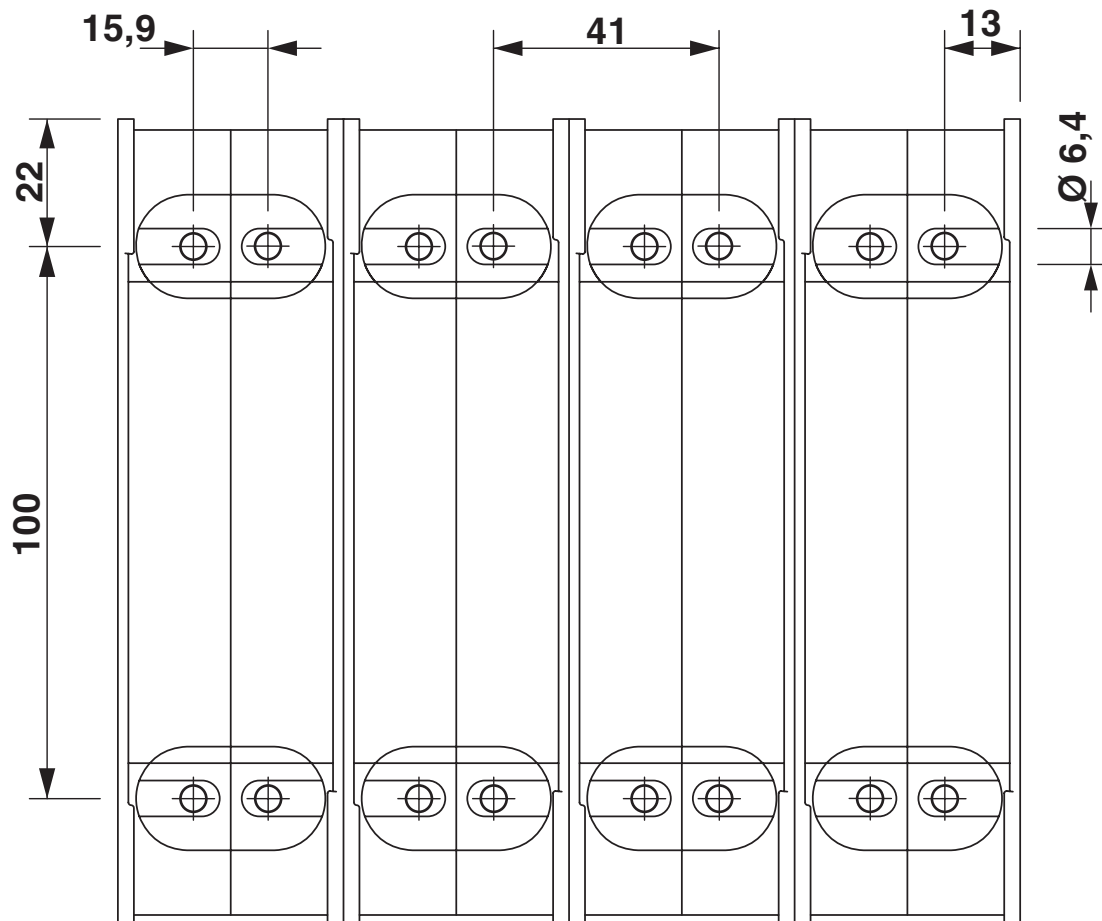
Bolt connection terminal block - RBO 10

3244614

<https://www.phoenixcontact.com/de/produkte/3244614>

Drawings

Dimensional drawing



Bolt connection terminal block - RBO 10



3244614

<https://www.phoenixcontact.com/de/produkte/3244614>

Circuit diagram




Bolt connection terminal block - RBO 10





3244614

<https://www.phoenixcontact.com/de/produkte/3244614>


Approvals


 CSA Approval ID: 13631				
	Nominal Voltage U_N	Nominal Current I_N	Cross Section AWG	Cross Section mm^2
Use group B	600 V	310 A	10 - 350	-
Use group C	1000 V	310 A	10 - 350	-


 UL Recognized Approval ID: E60425				
	Nominal Voltage U_N	Nominal Current I_N	Cross Section AWG	Cross Section mm^2
Use group B	600 V	310 A	10 - 350	-
Use group C	600 V	310 A	10 - 350	-
Use group E	1000 V	310 A	10 - 350	-

 EAC Ex Approval ID: RU C-DE.HA91.B.00066				
--	--	--	--	--

 IECEx Approval ID: IECEx SEV13.0003U				
	Nominal Voltage U_N	Nominal Current I_N	Cross Section AWG	Cross Section mm^2
	1100 V	309 A	-	6 - 150

 ATEX Approval ID: SEV13ATEX0132U				
	Nominal Voltage U_N	Nominal Current I_N	Cross Section AWG	Cross Section mm^2
	1100 V	309 A	-	6 - 150

 CCC Approval ID: 2020322313000627				
---	--	--	--	--

 NEPSI Approval ID: GYJ20.1202U				
--	--	--	--	--

Bolt connection terminal block - RBO 10



3244614

<https://www.phoenixcontact.com/de/produkte/3244614>

Classifications

ECLASS

ECLASS-9.0	27141120
ECLASS-10.0.1	27141120
ECLASS-11.0	27141120

ETIM

ETIM 8.0	EC000897
----------	----------

UNSPSC

UNSPSC 21.0	39121400
-------------	----------

Bolt connection terminal block - RBO 10



3244614

<https://www.phoenixcontact.com/de/produkte/3244614>

Environmental Product Compliance


China RoHS	Environmentally friendly use period: unlimited = EFUP-e
	No hazardous substances above threshold values

Bolt connection terminal block - RBO 10

3244614

<https://www.phoenixcontact.com/de/produkte/3244614>

Accessories

 Note: Applying some accessories below might limit this product.


Connection rail

Connection rail - RBO 10-VS 2 - 3244643

<https://www.phoenixcontact.com/de/produkte/3244643>

Connection rail, color: silver



 Max. current carrying capacity: 309 A


Connection rail

Connection rail - RBO 10-VS 3 - 3244656

<https://www.phoenixcontact.com/de/produkte/3244656>

Connection rail, color: silver



 Max. current carrying capacity: 309 A

Bolt connection terminal block - RBO 10

3244614

<https://www.phoenixcontact.com/de/produkte/3244614>

Label

Label - EML (51X25)R YE /RBO8 - 0801353

<https://www.phoenixcontact.com/de/produkte/0801353>



Label, yellow/black, labeled, can be labeled with: THERMOMARK ROLL 2.0, THERMOMARK ROLL, THERMOMARK ROLL X1, THERMOMARK ROLLMASTER 300/600, THERMOMARK X1.2: Lightning flash, mounting type: adhesive, lettering field size: 51 x 25 mm

DIN rail perforated

DIN rail perforated - NS 35/ 7,5 PERF 2000MM - 0801733

<https://www.phoenixcontact.com/de/produkte/0801733>



DIN rail perforated, acc. to EN 60715, material: Steel, galvanized, passivated with a thick layer, Standard profile, color: silver, Pack of 25 (50 m)

Bolt connection terminal block - RBO 10

3244614

<https://www.phoenixcontact.com/de/produkte/3244614>

Covering hood

Covering hood - HC-RBO 10 - 3247970

<https://www.phoenixcontact.com/de/produkte/3247970>

Covering hood, length: 115.2 mm, width: 40.8 mm, height: 67.7 mm, color: gray



DIN rail, unperforated

DIN rail, unperforated - NS 35/ 7,5 UNPERF 2000MM - 0801681

<https://www.phoenixcontact.com/de/produkte/0801681>

DIN rail, unperforated, acc. to EN 60715, material: Steel, galvanized, passivated with a thick layer, Standard profile, color: silver, Pack of 25 (50 m)



Bolt connection terminal block - RBO 10

3244614

<https://www.phoenixcontact.com/de/produkte/3244614>

Terminal strip marker carrier

Terminal strip marker carrier - KLM 3-L - 0814788

<https://www.phoenixcontact.com/de/produkte/0814788>



Terminal strip marker carrier, height-adjustable, for end brackets CLIPFIX 15, CLIPFIX 35 and CLIPFIX 35-5, can be labeled with BMK...20 x 8 labels, or directly with the M-PEN or X-PEN

DIN rail perforated

DIN rail perforated - NS 35/ 7,5 WH PERF 2000MM - 1204119

<https://www.phoenixcontact.com/de/produkte/1204119>



DIN rail perforated, acc. to EN 60715, material: Steel, Galvanized, white passivated, Standard profile, color: silver, Pack of 25 (50 m)

Bolt connection terminal block - RBO 10

3244614

<https://www.phoenixcontact.com/de/produkte/3244614>

Covering hood

Covering hood - HC-RBO 10 BU - 3247972

<https://www.phoenixcontact.com/de/produkte/3247972>

Covering hood, length: 144 mm, width: 41 mm, height: 33 mm, color: blue



DIN rail, unperforated

DIN rail, unperforated - NS 35/ 7,5 WH UNPERF 2000MM-VPE 10 - 1204122

<https://www.phoenixcontact.com/de/produkte/1204122>

DIN rail, unperforated, acc. to EN 60715, material: Steel, Galvanized, white passivated, Standard profile, color: silver, Pack of 10 (20 m)



Bolt connection terminal block - RBO 10

3244614

<https://www.phoenixcontact.com/de/produkte/3244614>

Covering hood

Covering hood - HC-RBO 10-FE - 3247971

<https://www.phoenixcontact.com/de/produkte/3247971>



Covering hood, length: 144 mm, width: 41 mm, height: 33 mm, color: black/yellow

DIN rail, unperforated

DIN rail, unperforated - NS 35/ 7,5 AL UNPERF 2000MM - 0801704

<https://www.phoenixcontact.com/de/produkte/0801704>



DIN rail, unperforated, acc. to EN 60715, material: Aluminum, uncoated, Standard profile, color: silver, Pack of 25 (50 m)

Bolt connection terminal block - RBO 10

3244614

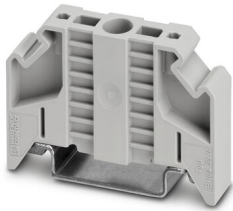
<https://www.phoenixcontact.com/de/produkte/3244614>

End clamp

End clamp - E/NS 35 N - 0800886

<https://www.phoenixcontact.com/de/produkte/0800886>

End clamp, width: 9.5 mm, color: gray



DIN rail perforated

DIN rail perforated - NS 35/ 7,5 ZN PERF 2000MM - 1206421

<https://www.phoenixcontact.com/de/produkte/1206421>

DIN rail perforated, acc. to EN 60715, material: Steel, galvanized, Standard profile, color: silver, Pack of 25 (50 m)



Bolt connection terminal block - RBO 10

3244614

<https://www.phoenixcontact.com/de/produkte/3244614>

Pick-off terminal block

Pick-off terminal block - AGK PT 4X6/M10 - 1017448

<https://www.phoenixcontact.com/de/produkte/1017448>



Pick-off terminal block, nom. voltage: 1000 V, nominal current: 41 A, connection method: Push-in connection, 1 level, Rated cross section: 6 mm², cross section: 0.5 mm² - 10 mm², Bolt connection, 1 level, mounting type: on base element, color: gray

DIN rail, unperforated

DIN rail, unperforated - NS 35/ 7,5 ZN UNPERF 2000MM - 1206434

<https://www.phoenixcontact.com/de/produkte/1206434>



DIN rail, unperforated, acc. to EN 60715, material: Steel, galvanized, Standard profile, color: silver, Pack of 25 (50 m)

Bolt connection terminal block - RBO 10

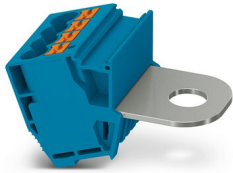
3244614

<https://www.phoenixcontact.com/de/produkte/3244614>

Pick-off terminal block

Pick-off terminal block - AGK PT 4X6/M10 BU - 1083237

<https://www.phoenixcontact.com/de/produkte/1083237>



Pick-off terminal block, nom. voltage: 1000 V, nominal current: 41 A, connection method: Push-in connection, 1 level, Rated cross section: 6 mm², cross section: 0.5 mm² - 10 mm², Bolt connection, 1 level, mounting type: on base element, color: blue

DIN rail, unperforated

DIN rail, unperforated - NS 35/ 7,5 CU UNPERF 2000MM-VPE 10 - 0801762

<https://www.phoenixcontact.com/de/produkte/0801762>



DIN rail, unperforated, acc. to EN 60715, material: Copper, uncoated, Standard profile, color: copper-colored, Pack of 10 (20 m)

Bolt connection terminal block - RBO 10

3244614

<https://www.phoenixcontact.com/de/produkte/3244614>

Pick-off terminal block

Pick-off terminal block - AGK PT 4X6/M10 GNYE - 1083238

<https://www.phoenixcontact.com/de/produkte/1083238>



Pick-off terminal block, nom. voltage: 1000 V, nominal current: 41 A, connection method: Push-in connection, 1 level, Rated cross section: 6 mm², cross section: 0.5 mm² - 10 mm², Bolt connection, 1 level, mounting type: on base element, color: green-yellow

End cap

End cap - NS 35/ 7,5 CAP - 1206560

<https://www.phoenixcontact.com/de/produkte/1206560>

DIN rail end piece, for DIN rail NS 35/7.5



Bolt connection terminal block - RBO 10

3244614

<https://www.phoenixcontact.com/de/produkte/3244614>

Pick-off terminal block

Pick-off terminal block - AGK PT 8X6/M10 - 1017450

<https://www.phoenixcontact.com/de/produkte/1017450>



Pick-off terminal block, nom. voltage: 1000 V, nominal current: 41 A, connection method: Push-in connection, 1 level, Rated cross section: 6 mm², cross section: 0.5 mm² - 10 mm², Bolt connection, 1 level, mounting type: on base element, color: gray

DIN rail perforated

DIN rail perforated - NS 35/15 PERF 2000MM - 1201730

<https://www.phoenixcontact.com/de/produkte/1201730>



DIN rail perforated, similar to EN 60715, material: Steel, galvanized, passivated with a thick layer, Standard profile, color: silver, Pack of 25 (50 m)

Bolt connection terminal block - RBO 10

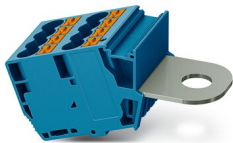
3244614

<https://www.phoenixcontact.com/de/produkte/3244614>

Pick-off terminal block

Pick-off terminal block - AGK PT 8X6/M10 BU - 1083235

<https://www.phoenixcontact.com/de/produkte/1083235>



Pick-off terminal block, nom. voltage: 1000 V, nominal current: 41 A, connection method: Push-in connection, 1 level, Rated cross section: 6 mm², cross section: 0.5 mm² - 10 mm², Bolt connection, 1 level, mounting type: on base element, color: blue

DIN rail, unperforated

DIN rail, unperforated - NS 35/15 UNPERF 2000MM - 1201714

<https://www.phoenixcontact.com/de/produkte/1201714>



DIN rail, unperforated, similar to EN 60715, material: Steel, galvanized, passivated with a thick layer, Standard profile, color: silver, Pack of 25 (50 m)

Bolt connection terminal block - RBO 10

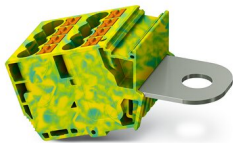
3244614

<https://www.phoenixcontact.com/de/produkte/3244614>

Pick-off terminal block

Pick-off terminal block - AGK PT 8X6/M10 GNYE - 1083236

<https://www.phoenixcontact.com/de/produkte/1083236>



Pick-off terminal block, nom. voltage: 1000 V, nominal current: 41 A, connection method: Push-in connection, 1 level, Rated cross section: 6 mm², cross section: 0.5 mm² - 10 mm², Bolt connection, 1 level, mounting type: on base element, color: green/yellow

DIN rail perforated

DIN rail perforated - NS 35/15 WH PERF 2000MM - 0806602

<https://www.phoenixcontact.com/de/produkte/0806602>



DIN rail perforated, similar to EN 60715, material: Steel, Galvanized, white passivated, Standard profile, color: white, Pack of 25 (50 m)

Bolt connection terminal block - RBO 10

3244614

<https://www.phoenixcontact.com/de/produkte/3244614>

DIN rail, unperforated

DIN rail, unperforated - NS 35/15 WH UNPERF 2000MM-VPE 10 - 1204135

<https://www.phoenixcontact.com/de/produkte/1204135>



DIN rail, unperforated, similar to EN 60715, material: Steel, Galvanized, white passivated, Standard profile, color: silver, Pack of 10 (20 m)

DIN rail, unperforated

DIN rail, unperforated - NS 35/15 AL UNPERF 2000MM - 1201756

<https://www.phoenixcontact.com/de/produkte/1201756>



DIN rail, unperforated, similar to EN 60715, material: Aluminum, uncoated, Standard profile, color: silver

Bolt connection terminal block - RBO 10

3244614

<https://www.phoenixcontact.com/de/produkte/3244614>

DIN rail perforated

DIN rail perforated - NS 35/15 ZN PERF 2000MM - 1206599

<https://www.phoenixcontact.com/de/produkte/1206599>



DIN rail perforated, similar to EN 60715, material: Steel, galvanized, Standard profile, color: silver, Pack of 25 (50 m)

DIN rail, unperforated

DIN rail, unperforated - NS 35/15 ZN UNPERF 2000MM - 1206586

<https://www.phoenixcontact.com/de/produkte/1206586>



DIN rail, unperforated, similar to EN 60715, material: Steel, galvanized, Standard profile, color: silver, Pack of 25 (50 m)

Bolt connection terminal block - RBO 10

3244614

<https://www.phoenixcontact.com/de/produkte/3244614>

DIN rail, unperforated

DIN rail, unperforated - NS 35/15 CU UNPERF 2000MM-VPE 10 - 1201895

<https://www.phoenixcontact.com/de/produkte/1201895>



DIN rail, unperforated, similar to EN 60715, material: Copper, uncoated, Standard profile, color: copper-colored, Pack of 10 (20 m)

End cap

End cap - NS 35/15 CAP - 1206573

<https://www.phoenixcontact.com/de/produkte/1206573>

DIN rail end piece, for DIN rail NS 35/15



Bolt connection terminal block - RBO 10

3244614

<https://www.phoenixcontact.com/de/produkte/3244614>

DIN rail, unperforated

DIN rail, unperforated - NS 35/15-2,3 UNPERF 2000MM-VPE 10 - 1201798

<https://www.phoenixcontact.com/de/produkte/1201798>



DIN rail, unperforated, acc. to EN 60715, material: Steel, galvanized, passivated with a thick layer, Standard profile 2.3 mm, color: silver, Pack of 10 (20 m)

Zack marker strip

Zack marker strip - ZB 10:UNBEDRUCKT - 1053001

<https://www.phoenixcontact.com/de/produkte/1053001>



Zack marker strip, Strip, white, unlabeled, can be labeled with: PLOTMARK, CMS-P1-PLOTTER, mounting type: snapped, for terminal block width: 10.2 mm, lettering field size: 10.5 mm x 10.15 mm, Number of individual labels: 10

Bolt connection terminal block - RBO 10

3244614

<https://www.phoenixcontact.com/de/produkte/3244614>

Zack marker strip

Zack marker strip - ZB 10 CUS - 0824941

<https://www.phoenixcontact.com/de/produkte/0824941>



Zack marker strip, can be ordered: Strip, white, labeled according to customer specifications, mounting type: snap into tall marker groove, for terminal block width: 10.2 mm, lettering field size: 10.15 x 10.5 mm, Number of individual labels: 10

Zack marker strip

Zack marker strip - ZB10,LGS:FORTL.ZAHLEN - 1053014

<https://www.phoenixcontact.com/de/produkte/1053014>



Zack marker strip, Strip, white, labeled, can be labeled with: CMS-P1-PLOTTER, printed horizontally: consecutive numbers 1 ... 10, 11 ... 20, etc. up to 91 ... 100, mounting type: snapped, for terminal block width: 10.2 mm, lettering field size: 10.15 x 10.5 mm, Number of individual labels: 10

Bolt connection terminal block - RBO 10

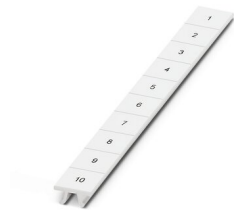
3244614

<https://www.phoenixcontact.com/de/produkte/3244614>

Zack marker strip

Zack marker strip - ZB10,QR:FORTL.ZAHLEN - 1053027

<https://www.phoenixcontact.com/de/produkte/1053027>



Zack marker strip, Strip, white, labeled, can be labeled with: CMS-P1-PLOTTER, Printed vertically: consecutive numbers 1 ... 10, 11 ... 20, etc. up to 91 ... 100, mounting type: snapped, for terminal block width: 10.2 mm, lettering field size: 10.15 x 10.5 mm, Number of individual labels: 10

Marker for terminal blocks

Marker for terminal blocks - ZB10,LGS:L1-N,PE - 1053412

<https://www.phoenixcontact.com/de/produkte/1053412>



Marker for terminal blocks, Strip, white, labeled, can be labeled with: CMS-P1-PLOTTER, horizontal: L1, L2, L3, N, PE, L1, L2, L3, N, PE, mounting type: snapped, for terminal block width: 10.2 mm, lettering field size: 10.15 x 10.5 mm, Number of individual labels: 10

Bolt connection terminal block - RBO 10

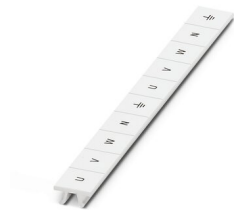
3244614

<https://www.phoenixcontact.com/de/produkte/3244614>

Marker for terminal blocks

Marker for terminal blocks - ZB10,LGS:U-N - 1053438

<https://www.phoenixcontact.com/de/produkte/1053438>



Marker for terminal blocks, Strip, white, labeled, can be labeled with: CMS-P1-PLOTTER, horizontal: U, V, W, N, GND, U, V, W, N, GND, mounting type: snapped, for terminal block width: 10.2 mm, lettering field size: 10.15 x 10.5 mm, Number of individual labels: 10

Marker for terminal blocks

Marker for terminal blocks - UC-TM 10 - 0818069

<https://www.phoenixcontact.com/de/produkte/0818069>



Marker for terminal blocks, Sheet, white, unlabeled, can be labeled with: BLUEMARK ID COLOR, BLUEMARK ID, BLUEMARK CLED, PLOTMARK, CMS-P1-PLOTTER, mounting type: snapped, for terminal block width: 10.2 mm, lettering field size: 9.6 x 10.5 mm, Number of individual labels: 48

Bolt connection terminal block - RBO 10

3244614

<https://www.phoenixcontact.com/de/produkte/3244614>

Marker for terminal blocks

Marker for terminal blocks - UC-TM 10 CUS - 0824605

<https://www.phoenixcontact.com/de/produkte/0824605>



Marker for terminal blocks, can be ordered: by sheet, white, labeled according to customer specifications, mounting type: snap into tall marker groove, for terminal block width: 10.2 mm, lettering field size: 9.6 x 10.5 mm, Number of individual labels: 48

Marker for terminal blocks

Marker for terminal blocks - UCT-TM 10 - 0829142

<https://www.phoenixcontact.com/de/produkte/0829142>



Marker for terminal blocks, Sheet, white, unlabeled, can be labeled with: TOPMARK NEO, TOPMARK LASER, BLUEMARK ID COLOR, BLUEMARK ID, BLUEMARK CLED, THERMOMARK PRIME, THERMOMARK CARD 2.0, THERMOMARK CARD, mounting type: snapped, for terminal block width: 10.2 mm, lettering field size: 8.9 x 9.6 mm, Number of individual labels: 36

Bolt connection terminal block - RBO 10

3244614

<https://www.phoenixcontact.com/de/produkte/3244614>

Marker for terminal blocks

Marker for terminal blocks - UCT-TM 10 CUS - 0829623

<https://www.phoenixcontact.com/de/produkte/0829623>



Marker for terminal blocks, can be ordered: by sheet, white, labeled according to customer specifications, mounting type: snap into tall marker groove, for terminal block width: 10.2 mm, lettering field size: 8.9 x 9.6 mm, Number of individual labels: 36

Zack Marker strip, flat

Zack Marker strip, flat - ZBF10:UNBEDRUCKT - 0809997

<https://www.phoenixcontact.com/de/produkte/0809997>



Zack Marker strip, flat, Strip, white, unlabeled, can be labeled with: CMS-P1-PLOTTER, PLOTMARK, mounting type: snapped, for terminal block width: 10 mm, lettering field size: 5.15 x 10 mm, Number of individual labels: 10

Bolt connection terminal block - RBO 10

3244614

<https://www.phoenixcontact.com/de/produkte/3244614>

Zack Marker strip, flat

Zack Marker strip, flat - ZBF10 CUS - 0825031

<https://www.phoenixcontact.com/de/produkte/0825031>



Zack Marker strip, flat, can be ordered: Strip, white, labeled according to customer specifications, mounting type: snap into flat marker groove, for terminal block width: 10 mm, lettering field size: 5.15 x 10 mm, Number of individual labels: 10

Zack Marker strip, flat

Zack Marker strip, flat - ZBF10,LGS:FORTL.ZAHLEN - 0810009

<https://www.phoenixcontact.com/de/produkte/0810009>



Zack Marker strip, flat, Strip, white, labeled, printed horizontally: consecutive numbers 1 ... 10, 11 ... 20, etc. up to 91 ... 100, mounting type: snapped, for terminal block width: 10 mm, lettering field size: 5.15 x 10 mm, Number of individual labels: 10

Bolt connection terminal block - RBO 10

3244614

<https://www.phoenixcontact.com/de/produkte/3244614>

Zack Marker strip, flat

Zack Marker strip, flat - ZBF10,QR:FORTL.ZAHLEN - 0810025

<https://www.phoenixcontact.com/de/produkte/0810025>



Zack Marker strip, flat, Strip, white, labeled, Printed vertically: consecutive numbers 1 ... 10, 11 ... 20, etc. up to 91 ... 100, mounting type: snapped, for terminal block width: 10 mm, lettering field size: 5.15 x 10 mm, Number of individual labels: 10

Marker for terminal blocks

Marker for terminal blocks - UC-TMF 10 - 0818124

<https://www.phoenixcontact.com/de/produkte/0818124>



Marker for terminal blocks, Sheet, white, unlabeled, can be labeled with: BLUEMARK ID COLOR, BLUEMARK ID, BLUEMARK CLED, PLOTMARK, CMS-P1-PLOTTER, mounting type: snapped, for terminal block width: 10.2 mm, lettering field size: 9.6 x 5.1 mm, Number of individual labels: 48

Bolt connection terminal block - RBO 10

3244614

<https://www.phoenixcontact.com/de/produkte/3244614>

Marker for terminal blocks

Marker for terminal blocks - UC-TMF 10 CUS - 0824662

<https://www.phoenixcontact.com/de/produkte/0824662>



Marker for terminal blocks, can be ordered: by sheet, white, labeled according to customer specifications, mounting type: snap into flat marker groove, for terminal block width: 10.2 mm, lettering field size: 9.6 x 5.1 mm, Number of individual labels: 48

Marker for terminal blocks

Marker for terminal blocks - UCT-TMF 10 - 0829204

<https://www.phoenixcontact.com/de/produkte/0829204>



Marker for terminal blocks, Sheet, white, unlabeled, can be labeled with: TOPMARK NEO, TOPMARK LASER, BLUEMARK ID COLOR, BLUEMARK ID, BLUEMARK CLED, THERMOMARK PRIME, THERMOMARK CARD 2.0, THERMOMARK CARD, mounting type: snapped, for terminal block width: 10.2 mm, lettering field size: 9.4 x 4.7 mm, Number of individual labels: 36

Bolt connection terminal block - RBO 10



3244614

<https://www.phoenixcontact.com/de/produkte/3244614>

Marker for terminal blocks

Marker for terminal blocks - UCT-TMF 10 CUS - 0829679

<https://www.phoenixcontact.com/de/produkte/0829679>

Marker for terminal blocks, can be ordered: by sheet, white, labeled according to customer specifications, mounting type: snap into flat marker groove, for terminal block width: 10.2 mm, lettering field size: 9.4 x 4.7 mm, Number of individual labels: 36



Software

Software - PROJECT COMPLETE - 1050453

<https://www.phoenixcontact.com/de/produkte/1050453>



Intuitive planning and marking software for configuring terminal strips and for professional marking of marking materials for terminal blocks, conductors, cables, devices, and systems. The software is available for download

Phoenix Contact 2022 © - all rights reserved
<https://www.phoenixcontact.com>

PHOENIX CONTACT Deutschland GmbH
Flachsmarktstraße 8
D-32825 Blomberg
+49 52 35/3-1 20 00
info@phoenixcontact.de