

1) Sensing surface, 2) Housing, 3) Potentiometer, 4) LED function indicator



**Basic features**

<b>Approval/Conformity</b>	CE cULus EAC WEEE
<b>Basic standard</b>	IEC 60947-5-2
<b>Scope of delivery</b>	Nut (2x) Screwdriver Short guide
<b>Sensitivity</b>	Switching distance adjustable
<b>Series</b>	M08

**Electrical data**

<b>No-load current <math>I_0</math> max. at <math>U_e</math></b>	10 mA
<b>Operating voltage <math>U_b</math></b>	11...30 VDC
<b>Rated insulation voltage <math>U_i</math></b>	75 V DC
<b>Rated operating current <math>I_e</math></b>	50 mA
<b>Rated operating voltage <math>U_e</math> DC</b>	24 V
<b>Ready delay <math>t_v</math> max.</b>	100 ms
<b>Ripple max. (% of <math>U_e</math>)</b>	10 %
<b>Switching frequency</b>	100 Hz
<b>Utilization category</b>	DC -13
<b>Voltage drop static max.</b>	2 V

**Display/Operation**

<b>Function indicator</b>	yes
---------------------------	-----

**Electrical connection**

<b>Connection</b>	M8x1-Male, 3-pin
<b>Polarity reversal protected</b>	yes
<b>Protection against device mix-ups</b>	yes
<b>Short-circuit protection</b>	yes

**Environmental conditions**

<b>Ambient temperature</b>	-10...70 °C
<b>Contamination scale</b>	2
<b>IP rating</b>	IP65

**Functional safety**

<b>MTTF (40 °C)</b>	444 a
---------------------	-------

**Interface**

<b>Switching output</b>	PNP normally open (NO)
-------------------------	------------------------

**Material**

<b>Housing material</b>	1.4301 stainless steel
<b>Material sensing surface</b>	PTFE

Capacitive Sensors  
**BCS M08T4E2-PSM30G-S49G**  
**Order Code: BCS002M**



**Mechanical data**

Dimension	Ø 8 x 54 mm
Installation	non-flush
Size	M8x1
Thread (A)	M8x1
Tightening torque	6 Nm

**Range/Distance**

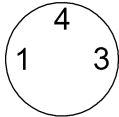
Hysteresis H max. (% of Sr)	15.0 %
Measuring range	0.1...3 mm
Rated operating distance S <sub>n</sub>	3 mm
Repeat accuracy max. (% of Sr)	2.0 %
Temperature drift max. (% of Sr)	15 %

**Remarks**

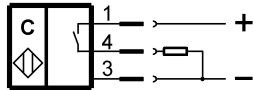
The potentiometer does not have a fixed stop, but can be turned endlessly without destroying anything.  
 If no change in the switching signal is detected, the potentiometer should be turned forwards or backwards until a signal change occurs at the output.  
 For more information about MTTF and B10d see MTTF / B10d Certificate

Indication of the MTTF- / B10d value does not represent a binding composition and/or life expectancy assurance; these are simply experiential values with no warranty implications. These declared values also do not extend the expiration period for defect claims or affect it in any way.

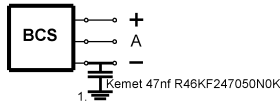
**Connector Drawings**



**Wiring Diagrams**



**Installation remarks**



1) Machine GND