

Feed-through terminal block - UK 3 N

3001501

<https://www.phoenixcontact.com/de/produkte/3001501>

Please be informed that the data shown in this PDF document is generated from our Online Catalog. Please find the complete data in the user documentation. Our General Terms of Use for Downloads are valid.



Feed-through terminal block, nom. voltage: 800 V, nominal current: 24 A, connection method: Screw connection, Rated cross section: 2.5 mm², cross section: 0.2 mm² - 4 mm², mounting type: NS 32, NS 35/15, NS 35/7,5, color: gray

Your advantages

- Universal foot which can be used on NS 35... and NS 32... DIN rails
- The UK universal screw terminal block series has the typical features which are decisive for practical applications
- Potential distribution via fixed bridges in the terminal center or insertion bridges in the clamping space

Feed-through terminal block - UK 3 N



3001501

<https://www.phoenixcontact.com/de/produkte/3001501>

Commercial Data

Item number	3001501
Packing unit	50 pc
Minimum order quantity	1 pc
Sales Key	A1 - Reihenklennen
Product Key	BE1211
Catalog Page	Page 459 (C-1-2019)
GTIN	4017918089955
Weight per Piece (including packing)	7,411 g
Weight per Piece (excluding packing)	6,984 g
Customs tariff number	85369010
Country of origin	CN

Feed-through terminal block - UK 3 N



3001501

<https://www.phoenixcontact.com/de/produkte/3001501>

Technical Data

Product properties

Product type	Feed-through terminal block
Number of connections	2
Number of rows	1
Potentials	1

Insulation characteristics

Overvoltage category	III
Degree of pollution	3

Electrical properties

Rated surge voltage	8 kV
Maximum power dissipation for nominal condition	0.77 W

Connection data

Number of connections per level	2
Nominal cross section	2.5 mm ²

Level 1 above 1 below 1

Screw thread	M3
Tightening torque	0.6 ... 0.8 Nm
Stripping length	8 mm
Conductor cross section solid	0.2 mm ² ... 4 mm ²
Cross section AWG	24 ... 12
Conductor cross section flexible	0.2 mm ² ... 2.5 mm ²
Conductor cross section, flexible [AWG]	24 ... 14
Flexible conductor cross section flexible (ferrule, w/o plastic sleeve)	0.25 mm ² ... 2.5 mm ²
Flexible conductor cross section (ferrule with plastic sleeve)	0.25 mm ² ... 1.5 mm ²
Cross-section with insertion bridge, rigid	4 mm ²
Cross-section with insertion bridge, flexible	2.5 mm ²
2 conductors with same cross section, solid	0.2 mm ² ... 1.5 mm ²
2 conductors with same cross section, flexible	0.2 mm ² ... 1.5 mm ²
2 conductors with same cross section, flexible, with ferrule without plastic sleeve	0.25 mm ² ... 1.5 mm ²
2 conductors with the same cross section, flexible, with TWIN ferrule with plastic sleeve	0.5 mm ² ... 1 mm ²
Nominal current	24 A
Maximum load current	32 A (with 4 mm ² conductor cross section)
Nominal voltage	800 V
Nominal cross section	2.5 mm ²

Ex data

Feed-through terminal block - UK 3 N



3001501

<https://www.phoenixcontact.com/de/produkte/3001501>

Rated data (ATEX/IECEX)

ATEX certificate	KEMA 98 ATEX 1651 U
IEC Ex certificate	IECEX KEM 06.0034 U
Identification	□ II 2 GD Ex eb IIC Gb
Operating temperature range	-60 °C ... 110 °C
Ex-certified accessories	3003020 D-UK 4/10 3006027 D-UK 16 3004210 ATP-UK 5-MTK 1212587 SF-SL 0,6X3,5-100 S-VDE 1201442 E/UK
Bridge data	18.5 A / 2.5 mm ² 20 A / 2.5 mm ²
Ex temperature increase	40 K (24 A / 2.5 mm ²)
Rated voltage	630 V
- At bridging between non-adjacent terminal blocks	176 V
Rated insulation voltage	630 V

Ex level General

Rated current	21.5 A
Maximum load current	27.5 A
Contact resistance	0.5 mΩ

Ex connection data General

Torque range	0.6 Nm ... 0.8 Nm
Nominal cross section	2.5 mm ²
Rated cross section AWG	14
Connection capacity rigid	0.2 mm ² ... 4 mm ²
Connection capacity AWG	24 ... 12
Connection capacity flexible	0.2 mm ² ... 2.5 mm ²
Connection capacity AWG	24 ... 14
2 conductors with same cross section, solid	0.2 mm ² ... 1.5 mm ²
2 conductors with the same cross-section AWG rigid	24 ... 16
2 conductors with same cross section, stranded	0.2 mm ² ... 1.5 mm ²
2 conductors with the same cross-section AWG flexible	24 ... 16

Dimensions

Width	5.2 mm
End cover width	1.8 mm
Height NS 35/15	54.5 mm
Height NS 35/7,5	47 mm
Height	1.85 "
Height NS 32	52 mm
Length	42.5 mm

Material specifications

Feed-through terminal block - UK 3 N



3001501

<https://www.phoenixcontact.com/de/produkte/3001501>

Color	gray
Flammability rating according to UL 94	V0
Insulating material group	I
Insulating material	PA

Electrical tests

Surge voltage test

Result	Test passed
--------	-------------

Temperature-rise test

Requirement temperature-rise test	Increase in temperature ≤ 45 K
Result	Test passed
Short-time withstand current 2.5 mm ²	0.3 kA
Result	Test passed

Power-frequency withstand voltage

Test voltage setpoint	2 kV
Result	Test passed

Mechanical properties

Mechanical data

Open side panel	Yes
-----------------	-----

Mechanical tests

Mechanical strength

Result	Test passed
--------	-------------

Attachment on the carrier

DIN rail/fixing support	NS 32/NS 35
Test force setpoint	1 N
Result	Test passed

Environmental and real-life conditions

Needle-flame test

Time of exposure	30 s
Result	Test passed

Ambient conditions

Ambient temperature (operation)	-60 °C ... 105 °C (max. short-term operating temperature RTI Elec.)
Ambient temperature (storage/transport)	-25 °C ... 60 °C (for a short time, not exceeding 24 h, -60 °C to +70 °C)
Ambient temperature (assembly)	-5 °C ... 70 °C
Ambient temperature (actuation)	-5 °C ... 70 °C
Permissible humidity (storage/transport)	30 % ... 70 %

Feed-through terminal block - UK 3 N



3001501

<https://www.phoenixcontact.com/de/produkte/3001501>

Standards and regulations

Connection in acc. with standard	IEC 60947-7-1
----------------------------------	---------------

Mounting

Mounting type	NS 32
	NS 35/15
	NS 35/7,5

Feed-through terminal block - UK 3 N

3001501

<https://www.phoenixcontact.com/de/produkte/3001501>



Drawings

Circuit diagram




Feed-through terminal block - UK 3 N



3001501


<https://www.phoenixcontact.com/de/produkte/3001501>

Approvals

 DNV Approval ID: TAE00001CT				
	Nominal Voltage U_N	Nominal Current I_N	Cross Section AWG	Cross Section mm^2
			-	-

 CSA Approval ID: 13631				
	Nominal Voltage U_N	Nominal Current I_N	Cross Section AWG	Cross Section mm^2
	600 V	20 A	28 - 12	-

 IECEE CB Scheme Approval ID: NL-39956_A1				
	Nominal Voltage U_N	Nominal Current I_N	Cross Section AWG	Cross Section mm^2
	800 V	24 A	-	- 2.5

 cULus Recognized Approval ID: E60425				
	Nominal Voltage U_N	Nominal Current I_N	Cross Section AWG	Cross Section mm^2
Use group B	600 V	20 A	28 - 12	-
Use group C	600 V	20 A	28 - 12	-
Use group F	800 V	20 A	28 - 12	-

 KEMA-KEUR Approval ID: 71-119849				
	Nominal Voltage U_N	Nominal Current I_N	Cross Section AWG	Cross Section mm^2
	800 V	24 A	-	- 2.5

 KR Approval ID: HMB17372-EL001				
--	--	--	--	--

 NK Approval ID: 09 ME 141				
	Nominal Voltage U_N	Nominal Current I_N	Cross Section AWG	Cross Section mm^2
			-	-

Feed-through terminal block - UK 3 N



3001501

<https://www.phoenixcontact.com/de/produkte/3001501>



RS

Approval ID: 17.00013.272



ATEX

Approval ID: KEMA98ATEX1651U



cUL Recognized

Approval ID: E192998

	Nominal Voltage U_N	Nominal Current I_N	Cross Section AWG	Cross Section mm^2
	300 V	20 A	28 - 12	-



EAC Ex

Approval ID: RU C-DE.HA91.B.00066



GL

Approval ID: 98876-96 HH

	Nominal Voltage U_N	Nominal Current I_N	Cross Section AWG	Cross Section mm^2
EEx e II part certificate	690 V	23 A	-	- 2.5



IECEX

Approval ID: IECEX KEM 06.0034U



UL Recognized

Approval ID: E192998

	Nominal Voltage U_N	Nominal Current I_N	Cross Section AWG	Cross Section mm^2
	300 V	20 A	28 - 12	-



CCC

Approval ID: 2020322313000623



NEPSI

Approval ID: GYJ20.1195U



DNV GL-EX

Approval ID: TAE00003K6

	Nominal Voltage U_N	Nominal Current I_N	Cross Section AWG	Cross Section mm^2
EEx e II part certificate	440 V	32 A	-	- 2.5

Feed-through terminal block - UK 3 N

3001501

<https://www.phoenixcontact.com/de/produkte/3001501>



cULus Recognized

Feed-through terminal block - UK 3 N



3001501

<https://www.phoenixcontact.com/de/produkte/3001501>

Classifications

ECLASS

ECLASS-9.0	27141120
ECLASS-10.0.1	27141120
ECLASS-11.0	27141120

ETIM

ETIM 8.0	EC000897
----------	----------

UNSPSC

UNSPSC 21.0	39121400
-------------	----------

Feed-through terminal block - UK 3 N



3001501

<https://www.phoenixcontact.com/de/produkte/3001501>

Environmental Product Compliance

China RoHS	Environmentally friendly use period: unlimited = EFUP-e No hazardous substances above threshold values
------------	---

Feed-through terminal block - UK 3 N

3001501

<https://www.phoenixcontact.com/de/produkte/3001501>

Accessories



Note: Applying some accessories below might limit this product.

Fixed bridge

Fixed bridge - FBR 80-5-EX - 3000942

<https://www.phoenixcontact.com/de/produkte/3000942>

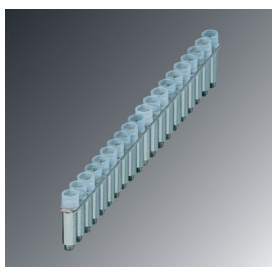


Fixed bridge, pitch: 5 mm, color: silver

Fixed bridge

Fixed bridge - FBRI 20-5 N - 3000515

<https://www.phoenixcontact.com/de/produkte/3000515>



Fixed bridge, pitch: 5 mm, color: silver

Feed-through terminal block - UK 3 N

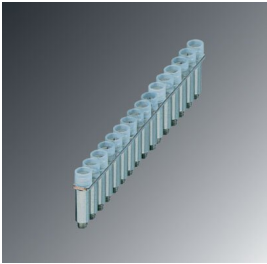
3001501

<https://www.phoenixcontact.com/de/produkte/3001501>

Fixed bridge

Fixed bridge - FBRI 16-5 N - 3000476

<https://www.phoenixcontact.com/de/produkte/3000476>

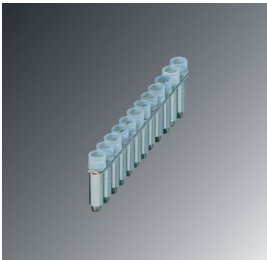


Fixed bridge, color: silver

Fixed bridge

Fixed bridge - FBRI 12-5 N - 3000434

<https://www.phoenixcontact.com/de/produkte/3000434>



Fixed bridge, color: silver

Feed-through terminal block - UK 3 N

3001501

<https://www.phoenixcontact.com/de/produkte/3001501>



Fixed bridge

Fixed bridge - FBRI 2-5 N - 3000227

<https://www.phoenixcontact.com/de/produkte/3000227>



Fixed bridge, pitch: 5 mm, color: silver

Fixed bridge

Fixed bridge - FBRI 10-5 N - 2770642

<https://www.phoenixcontact.com/de/produkte/2770642>



Fixed bridge, pitch: 5.2 mm, color: silver

 Max. current carrying capacity: 30 A

Feed-through terminal block - UK 3 N

3001501

<https://www.phoenixcontact.com/de/produkte/3001501>

Fixed bridge

Fixed bridge - FBR 10-5-EX - 2303226

<https://www.phoenixcontact.com/de/produkte/2303226>

Fixed bridge, pitch: 5 mm, color: silver

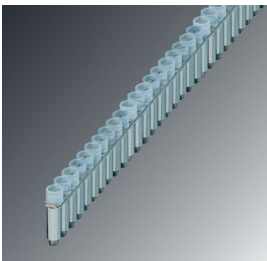


Fixed bridge

Fixed bridge - FBRI 40-5 N - 3006823

<https://www.phoenixcontact.com/de/produkte/3006823>

Fixed bridge, color: silver



Feed-through terminal block - UK 3 N

3001501

<https://www.phoenixcontact.com/de/produkte/3001501>

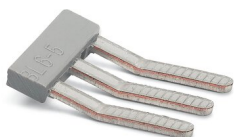



Insertion bridge

Insertion bridge - EBL 3- 5 - 2303158

<https://www.phoenixcontact.com/de/produkte/2303158>

Insertion bridge, pitch: 5.2 mm, color: gray



 Max. current carrying capacity: 24 A


Insertion bridge

Insertion bridge - EBL 2- 5 - 2303145

<https://www.phoenixcontact.com/de/produkte/2303145>

Insertion bridge, pitch: 5.2 mm, color: gray



 Max. current carrying capacity: 24 A

Feed-through terminal block - UK 3 N

3001501

<https://www.phoenixcontact.com/de/produkte/3001501>




Insertion bridge

Insertion bridge - EBL 10- 5 - 2303132

<https://www.phoenixcontact.com/de/produkte/2303132>

Insertion bridge, pitch: 5.2 mm, color: gray



 Max. current carrying capacity: 24 A

Switching jumper

Switching jumper - USBR 2-7 - 2303239

<https://www.phoenixcontact.com/de/produkte/2303239>

Switching jumper, pitch: 7 mm, color: silver



Feed-through terminal block - UK 3 N

3001501

<https://www.phoenixcontact.com/de/produkte/3001501>

Switching jumper

Switching jumper - USBRJ 2-7 - 2305538

<https://www.phoenixcontact.com/de/produkte/2305538>



Switching jumper, color: silver

End cover

End cover - D-UK 4/10 - 3003020

<https://www.phoenixcontact.com/de/produkte/3003020>



End cover, length: 42.5 mm, width: 1.8 mm, height: 35.9 mm, color: gray

Feed-through terminal block - UK 3 N

3001501

<https://www.phoenixcontact.com/de/produkte/3001501>

DIN rail perforated

DIN rail perforated - NS 32 PERF 2000MM-VPE 10 - 1201002

<https://www.phoenixcontact.com/de/produkte/1201002>



DIN rail perforated, acc. to EN 60715, material: Steel, galvanized, passivated with a thick layer, G profile, color: silver, Pack of 10 (20 m)

End cover

End cover - D-UK 4/10 BU - 3003101

<https://www.phoenixcontact.com/de/produkte/3003101>



End cover, length: 42.5 mm, width: 1.8 mm, height: 47 mm, color: blue

Feed-through terminal block - UK 3 N

3001501

<https://www.phoenixcontact.com/de/produkte/3001501>

DIN rail, unperforated

DIN rail, unperforated - NS 32 UNPERF 2000MM-VPE 10 - 1201015

<https://www.phoenixcontact.com/de/produkte/1201015>



DIN rail, unperforated, acc. to EN 60715, material: Steel, galvanized, passivated with a thick layer, G profile, color: silver, Pack of 10 (20 m)

Warning label

Warning label - WS 3- 5 - 0805357

<https://www.phoenixcontact.com/de/produkte/0805357>

Warning plate, with 2 plastic screws, across 3 terminal blocks, pitch 5 mm



Feed-through terminal block - UK 3 N

3001501

<https://www.phoenixcontact.com/de/produkte/3001501>

DIN rail perforated

DIN rail perforated - NS 35/ 7,5 PERF 2000MM - 0801733

<https://www.phoenixcontact.com/de/produkte/0801733>



DIN rail perforated, acc. to EN 60715, material: Steel, galvanized, passivated with a thick layer, Standard profile, color: silver, Pack of 25 (50 m)

Warning label

Warning label - WS 4- 5 - 0805344

<https://www.phoenixcontact.com/de/produkte/0805344>

Warning plate, with 2 plastic screws, across 4 terminal blocks, pitch 5 mm



Feed-through terminal block - UK 3 N

3001501

<https://www.phoenixcontact.com/de/produkte/3001501>

DIN rail, unperforated

DIN rail, unperforated - NS 35/ 7,5 UNPERF 2000MM - 0801681

<https://www.phoenixcontact.com/de/produkte/0801681>



DIN rail, unperforated, acc. to EN 60715, material: Steel, galvanized, passivated with a thick layer, Standard profile, color: silver, Pack of 25 (50 m)

Warning label

Warning label - WS 5- 5 - 0805331

<https://www.phoenixcontact.com/de/produkte/0805331>

Warning plate, with 2 plastic screws, across 5 terminal blocks, pitch 5 mm



Feed-through terminal block - UK 3 N

3001501

<https://www.phoenixcontact.com/de/produkte/3001501>

DIN rail perforated

DIN rail perforated - NS 35/ 7,5 WH PERF 2000MM - 1204119

<https://www.phoenixcontact.com/de/produkte/1204119>



DIN rail perforated, acc. to EN 60715, material: Steel, Galvanized, white passivated, Standard profile, color: silver, Pack of 25 (50 m)

Screw

Screw - ZSR - 2303608

<https://www.phoenixcontact.com/de/produkte/2303608>



Screw

Feed-through terminal block - UK 3 N

3001501

<https://www.phoenixcontact.com/de/produkte/3001501>

DIN rail, unperforated

DIN rail, unperforated - NS 35/ 7,5 WH UNPERF 2000MM-VPE 10 - 1204122

<https://www.phoenixcontact.com/de/produkte/1204122>



DIN rail, unperforated, acc. to EN 60715, material: Steel, Galvanized, white passivated, Standard profile, color: silver, Pack of 10 (20 m)

Fixed bridge

Fixed bridge - FB-150

METER - 0201595

<https://www.phoenixcontact.com/de/produkte/0201595>



Cross connection rail, for fixed bridging of identical inputs and outputs, made of Cu, nickel-plated, 1 m long

Feed-through terminal block - UK 3 N

3001501

<https://www.phoenixcontact.com/de/produkte/3001501>

DIN rail, unperforated

DIN rail, unperforated - NS 35/ 7,5 AL UNPERF 2000MM - 0801704

<https://www.phoenixcontact.com/de/produkte/0801704>



DIN rail, unperforated, acc. to EN 60715, material: Aluminum, uncoated, Standard profile, color: silver, Pack of 25 (50 m)

Cover

Cover - EA 5-WS - 1024085

<https://www.phoenixcontact.com/de/produkte/1024085>



Single covers, for covering one terminal block, with black symbol (lightning flash) snap fit, color: transparent/yellow

Feed-through terminal block - UK 3 N

3001501

<https://www.phoenixcontact.com/de/produkte/3001501>

DIN rail perforated

DIN rail perforated - NS 35/ 7,5 ZN PERF 2000MM - 1206421

<https://www.phoenixcontact.com/de/produkte/1206421>



DIN rail perforated, acc. to EN 60715, material: Steel, galvanized, Standard profile, color: silver, Pack of 25 (50 m)

Cover

Cover - EA 5 - 1024014

<https://www.phoenixcontact.com/de/produkte/1024014>

Cover, material: ABS, color: transparent



Feed-through terminal block - UK 3 N

3001501

<https://www.phoenixcontact.com/de/produkte/3001501>

DIN rail, unperforated

DIN rail, unperforated - NS 35/ 7,5 ZN UNPERF 2000MM - 1206434

<https://www.phoenixcontact.com/de/produkte/1206434>



DIN rail, unperforated, acc. to EN 60715, material: Steel, galvanized, Standard profile, color: silver, Pack of 25 (50 m)

Short-circuit connector

Short-circuit connector - KSS 5 - 2303543

<https://www.phoenixcontact.com/de/produkte/2303543>



Short-circuit connector, pitch: 5 mm, color: black

Feed-through terminal block - UK 3 N

3001501

<https://www.phoenixcontact.com/de/produkte/3001501>

DIN rail, unperforated

DIN rail, unperforated - NS 35/ 7,5 CU UNPERF 2000MM-VPE 10 - 0801762

<https://www.phoenixcontact.com/de/produkte/0801762>



DIN rail, unperforated, acc. to EN 60715, material: Copper, uncoated, Standard profile, color: copper-colored, Pack of 10 (20 m)

End cap

End cap - NS 35/ 7,5 CAP - 1206560

<https://www.phoenixcontact.com/de/produkte/1206560>

DIN rail end piece, for DIN rail NS 35/7.5



Feed-through terminal block - UK 3 N

3001501

<https://www.phoenixcontact.com/de/produkte/3001501>

Test plugs

Test plugs - PS-UK 2,5 B/Z-5 - 3001226

<https://www.phoenixcontact.com/de/produkte/3001226>



Test plugs, color: red

DIN rail perforated

DIN rail perforated - NS 35/15 PERF 2000MM - 1201730

<https://www.phoenixcontact.com/de/produkte/1201730>



DIN rail perforated, similar to EN 60715, material: Steel, galvanized, passivated with a thick layer, Standard profile, color: silver, Pack of 25 (50 m)

Feed-through terminal block - UK 3 N

3001501

<https://www.phoenixcontact.com/de/produkte/3001501>

Test plugs

Test plugs - PS-UK 2,5 B/E - 3001132

<https://www.phoenixcontact.com/de/produkte/3001132>



Test plugs, color: red

DIN rail, unperforated

DIN rail, unperforated - NS 35/15 UNPERF 2000MM - 1201714

<https://www.phoenixcontact.com/de/produkte/1201714>



DIN rail, unperforated, similar to EN 60715, material: Steel, galvanized, passivated with a thick layer, Standard profile, color: silver, Pack of 25 (50 m)

Feed-through terminal block - UK 3 N

3001501

<https://www.phoenixcontact.com/de/produkte/3001501>

Reducing plug

Reducing plug - RPS - 0201647

<https://www.phoenixcontact.com/de/produkte/0201647>



Reducing plug, color: gray

DIN rail perforated

DIN rail perforated - NS 35/15 WH PERF 2000MM - 0806602

<https://www.phoenixcontact.com/de/produkte/0806602>



DIN rail perforated, similar to EN 60715, material: Steel, Galvanized, white passivated, Standard profile, color: white, Pack of 25 (50 m)

Feed-through terminal block - UK 3 N

3001501

<https://www.phoenixcontact.com/de/produkte/3001501>

Separating plate

Separating plate - TS-K - 1302215

<https://www.phoenixcontact.com/de/produkte/1302215>



Separating plate, length: 22 mm, width: 0.5 mm, height: 22 mm, color: gray

DIN rail, unperforated

DIN rail, unperforated - NS 35/15 WH UNPERF 2000MM-VPE 10 - 1204135

<https://www.phoenixcontact.com/de/produkte/1204135>



DIN rail, unperforated, similar to EN 60715, material: Steel, Galvanized, white passivated, Standard profile, color: silver, Pack of 10 (20 m)

Feed-through terminal block - UK 3 N

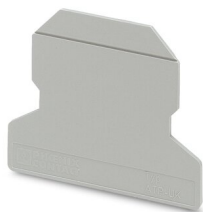
3001501

<https://www.phoenixcontact.com/de/produkte/3001501>

Partition plate

Partition plate - ATP-UK - 3003224

<https://www.phoenixcontact.com/de/produkte/3003224>



Partition plate, length: 56 mm, width: 1.5 mm, height: 45.7 mm, color: gray

DIN rail, unperforated

DIN rail, unperforated - NS 35/15 AL UNPERF 2000MM - 1201756

<https://www.phoenixcontact.com/de/produkte/1201756>



DIN rail, unperforated, similar to EN 60715, material: Aluminum, uncoated, Standard profile, color: silver

Feed-through terminal block - UK 3 N

3001501

<https://www.phoenixcontact.com/de/produkte/3001501>

DIN rail perforated

DIN rail perforated - NS 35/15 ZN PERF 2000MM - 1206599

<https://www.phoenixcontact.com/de/produkte/1206599>



DIN rail perforated, similar to EN 60715, material: Steel, galvanized, Standard profile, color: silver, Pack of 25 (50 m)

Screwdriver

Screwdriver - SF-SL 0,6X3,5-100 S-VDE - 1212587

<https://www.phoenixcontact.com/de/produkte/1212587>



Actuation tool, for ST terminal blocks, VDE insulated, with slimmer insulation integrated in the blade, also suitable for use as a bladed screwdriver, size: 0.6 x 3.5 x 100 mm, 2-component grip, with non-slip grip

Feed-through terminal block - UK 3 N

3001501

<https://www.phoenixcontact.com/de/produkte/3001501>

DIN rail, unperforated

DIN rail, unperforated - NS 35/15 ZN UNPERF 2000MM - 1206586

<https://www.phoenixcontact.com/de/produkte/1206586>



DIN rail, unperforated, similar to EN 60715, material: Steel, galvanized, Standard profile, color: silver, Pack of 25 (50 m)

DIN rail, unperforated

DIN rail, unperforated - NS 35/15 CU UNPERF 2000MM-VPE 10 - 1201895

<https://www.phoenixcontact.com/de/produkte/1201895>



DIN rail, unperforated, similar to EN 60715, material: Copper, uncoated, Standard profile, color: copper-colored, Pack of 10 (20 m)

Feed-through terminal block - UK 3 N

3001501

<https://www.phoenixcontact.com/de/produkte/3001501>

End cap

End cap - NS 35/15 CAP - 1206573

<https://www.phoenixcontact.com/de/produkte/1206573>

DIN rail end piece, for DIN rail NS 35/15



DIN rail, unperforated

DIN rail, unperforated - NS 35/15-2,3 UNPERF 2000MM-VPE 10 - 1201798

<https://www.phoenixcontact.com/de/produkte/1201798>



DIN rail, unperforated, acc. to EN 60715, material: Steel, galvanized, passivated with a thick layer, Standard profile 2.3 mm, color: silver, Pack of 10 (20 m)

Feed-through terminal block - UK 3 N

3001501

<https://www.phoenixcontact.com/de/produkte/3001501>

Zack marker strip

Zack marker strip - ZB 5 :UNBEDRUCKT - 1050004

<https://www.phoenixcontact.com/de/produkte/1050004>



Zack marker strip, Strip, white, unlabeled, can be labeled with: PLOTMARK, CMS-P1-PLOTTER, mounting type: snapped, for terminal block width: 5.2 mm, lettering field size: 5.1 x 10.5 mm, Number of individual labels: 10

Zack marker strip

Zack marker strip - ZB 5 CUS - 0824962

<https://www.phoenixcontact.com/de/produkte/0824962>



Zack marker strip, can be ordered: Strip, white, labeled according to customer specifications, mounting type: snap into tall marker groove, for terminal block width: 5.2 mm, lettering field size: 5.15 x 10.5 mm, Number of individual labels: 10

Feed-through terminal block - UK 3 N

3001501

<https://www.phoenixcontact.com/de/produkte/3001501>

Zack marker strip

Zack marker strip - ZB 5,LGS:FORTL.ZAHLEN - 1050017

<https://www.phoenixcontact.com/de/produkte/1050017>

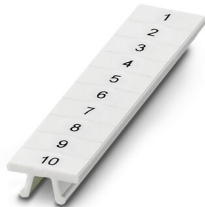


Zack marker strip, Strip, white, labeled, printed horizontally: consecutive numbers 1 ... 10, 11 ... 20, etc. up to 491 ... 500, mounting type: snapped, for terminal block width: 5.2 mm, lettering field size: 5.15 x 10.5 mm, Number of individual labels: 10

Zack marker strip

Zack marker strip - ZB 5,QR:FORTL.ZAHLEN - 1050020

<https://www.phoenixcontact.com/de/produkte/1050020>



Zack marker strip, white, Printed vertically: consecutive numbers 1 ... 10, 11 ... 20, etc. up to 491 ... 500, mounting type: snapped, for terminal block width: 5.2 mm, lettering field size: 5.15 x 10.5 mm

Feed-through terminal block - UK 3 N

3001501

<https://www.phoenixcontact.com/de/produkte/3001501>

Zack marker strip

Zack marker strip - ZB 5,LGS:GLEICHE ZAHLEN - 1050033

<https://www.phoenixcontact.com/de/produkte/1050033>

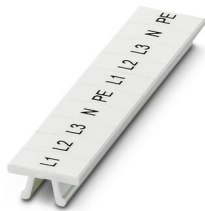


Zack marker strip, Strip, white, labeled, can be labeled with: CMS-P1-PLOTTER, printed horizontally: Identical numbers 1 or 2, etc. up to 100, mounting type: snapped, for terminal block width: 5.2 mm, lettering field size: 5.15 x 10.5 mm, Number of individual labels: 10

Zack marker strip

Zack marker strip - ZB 5,LGS:L1-N,PE - 1050415

<https://www.phoenixcontact.com/de/produkte/1050415>



Zack marker strip, Strip, white, labeled, horizontal: L1, L2, L3, N, PE, L1, L2, L3, N, PE, mounting type: snapped, for terminal block width: 5.2 mm, lettering field size: 5.15 x 10.5 mm, Number of individual labels: 10

Feed-through terminal block - UK 3 N

3001501

<https://www.phoenixcontact.com/de/produkte/3001501>

Marker for terminal blocks

Marker for terminal blocks - UC-TM 5 - 0818108

<https://www.phoenixcontact.com/de/produkte/0818108>



Marker for terminal blocks, Sheet, white, unlabeled, can be labeled with: BLUEMARK ID COLOR, BLUEMARK ID, BLUEMARK CLED, PLOTMARK, CMS-P1-PLOTTER, mounting type: snapped, for terminal block width: 5.2 mm, lettering field size: 10.5 x 4.6 mm, Number of individual labels: 96

Marker for terminal blocks

Marker for terminal blocks - UC-TM 5 CUS - 0824581

<https://www.phoenixcontact.com/de/produkte/0824581>



Marker for terminal blocks, can be ordered: by sheet, white, labeled according to customer specifications, mounting type: snap into tall marker groove, for terminal block width: 5.2 mm, lettering field size: 10.5 x 4.6 mm, Number of individual labels: 96

Feed-through terminal block - UK 3 N

3001501

<https://www.phoenixcontact.com/de/produkte/3001501>

Marker for terminal blocks

Marker for terminal blocks - UCT-TM 5 - 0828734

<https://www.phoenixcontact.com/de/produkte/0828734>



Marker for terminal blocks, Sheet, white, unlabeled, can be labeled with: TOPMARK NEO, TOPMARK LASER, BLUEMARK ID COLOR, BLUEMARK ID, BLUEMARK CLED, THERMOMARK PRIME, THERMOMARK CARD 2.0, THERMOMARK CARD, mounting type: snapped, for terminal block width: 5.2 mm, lettering field size: 4.6 x 10.5 mm, Number of individual labels: 72

Marker for terminal blocks

Marker for terminal blocks - UCT-TM 5 CUS - 0829595

<https://www.phoenixcontact.com/de/produkte/0829595>



Marker for terminal blocks, can be ordered: by sheet, white, labeled according to customer specifications, mounting type: snap into tall marker groove, for terminal block width: 5.2 mm, lettering field size: 4.6 x 10.5 mm, Number of individual labels: 72

Feed-through terminal block - UK 3 N

3001501

<https://www.phoenixcontact.com/de/produkte/3001501>

Test plugs

Test plugs - MPS-MT - 0201744

<https://www.phoenixcontact.com/de/produkte/0201744>



Test plugs, with solder connection up to 1 mm² conductor cross section, color: gray

Insulating sleeve

Insulating sleeve - MPS-IH WH - 0201663

<https://www.phoenixcontact.com/de/produkte/0201663>



Insulating sleeve, color: white

Feed-through terminal block - UK 3 N

3001501

<https://www.phoenixcontact.com/de/produkte/3001501>



Insulating sleeve

Insulating sleeve - MPS-IH RD - 0201676

<https://www.phoenixcontact.com/de/produkte/0201676>

Insulating sleeve, color: red

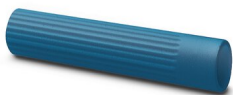


Insulating sleeve

Insulating sleeve - MPS-IH BU - 0201689

<https://www.phoenixcontact.com/de/produkte/0201689>

Insulating sleeve, color: blue



Feed-through terminal block - UK 3 N

3001501

<https://www.phoenixcontact.com/de/produkte/3001501>

Insulating sleeve

Insulating sleeve - MPS-IH YE - 0201692

<https://www.phoenixcontact.com/de/produkte/0201692>

Insulating sleeve, color: yellow



Insulating sleeve

Insulating sleeve - MPS-IH GN - 0201702

<https://www.phoenixcontact.com/de/produkte/0201702>

Insulating sleeve, color: green



Feed-through terminal block - UK 3 N

3001501

<https://www.phoenixcontact.com/de/produkte/3001501>

Insulating sleeve

Insulating sleeve - MPS-IH GY - 0201728

<https://www.phoenixcontact.com/de/produkte/0201728>

Insulating sleeve, color: gray



Insulating sleeve

Insulating sleeve - MPS-IH BK - 0201731

<https://www.phoenixcontact.com/de/produkte/0201731>

Insulating sleeve, color: black



Feed-through terminal block - UK 3 N

3001501

<https://www.phoenixcontact.com/de/produkte/3001501>

End clamp

End clamp - CLIPFIX 35 - 3022218

<https://www.phoenixcontact.com/de/produkte/3022218>



Quick mounting end clamp for NS 35/7,5 DIN rail or NS 35/15 DIN rail, with marking option, width: 9.5 mm, color: gray

End clamp

End clamp - CLIPFIX 35-5 - 3022276

<https://www.phoenixcontact.com/de/produkte/3022276>



Quick mounting end clamp for NS 35/7,5 DIN rail or NS 35/15 DIN rail, with marking option, with parking option for FBS...5, FBS...6, KSS 5, KSS 6, width: 15 mm, color: gray

Feed-through terminal block - UK 3 N

3001501

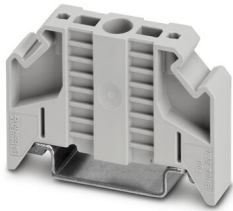
<https://www.phoenixcontact.com/de/produkte/3001501>

End clamp

End clamp - E/NS 35 N - 0800886

<https://www.phoenixcontact.com/de/produkte/0800886>

End clamp, width: 9.5 mm, color: gray



End clamp

End clamp - E/UK - 1201442

<https://www.phoenixcontact.com/de/produkte/1201442>

End clamp, material: PA, color: gray, Mounting on a DIN rail NS 32 or NS 35



Feed-through terminal block - UK 3 N

3001501

<https://www.phoenixcontact.com/de/produkte/3001501>

End clamp

End clamp - E/UK 1 - 1201413

<https://www.phoenixcontact.com/de/produkte/1201413>



End clamps, for supporting the ends of double-level and three-level terminal blocks, width: 10 mm, color: gray

Female test connector

Female test connector - PSBJ 3/13/4 - 0201304

<https://www.phoenixcontact.com/de/produkte/0201304>



Female test connector, color: silver

Feed-through terminal block - UK 3 N

3001501

<https://www.phoenixcontact.com/de/produkte/3001501>



Female test connector

Female test connector - PSB 3/10/4 - 0601292

<https://www.phoenixcontact.com/de/produkte/0601292>



Female test connector, color: silver

Phoenix Contact 2022 © - all rights reserved

<https://www.phoenixcontact.com>

PHOENIX CONTACT Deutschland GmbH

Flachsmarktstraße 8

D-32825 Blomberg

+49 52 35/3-1 20 00

info@phoenixcontact.de