

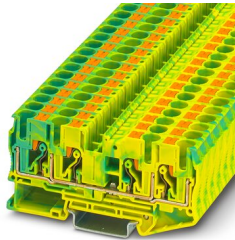
Ground modular terminal block - PT 6-QUATTRO-PE



3212950

<https://www.phoenixcontact.com/de/produkte/3212950>

Please be informed that the data shown in this PDF document is generated from our Online Catalog. Please find the complete data in the user documentation. Our General Terms of Use for Downloads are valid.



Ground modular terminal block, number of connections: 4, connection method: Push-in connection, 1 level, cross section: 0.5 mm² - 10 mm², mounting type: NS 35/7,5, NS 35/15, color: green-yellow

Your advantages

- In addition to the testing facility in the double function shaft, all terminal blocks provide an additional test connection
- The compact design and front connection enable wiring in a confined space
- The Push-in connection terminal blocks are characterized by the system features of the CLIPLINE complete system and by easy and tool-free wiring of conductors with ferrules or solid conductors
- Tested for railway applications

Ground modular terminal block - PT 6-QUATTRO-PE



3212950

<https://www.phoenixcontact.com/de/produkte/3212950>

Commercial Data

| | |
|--------------------------------------|---------------------|
| Item number | 3212950 |
| Packing unit | 50 pc |
| Minimum order quantity | 50 pc |
| Sales Key | A1 - Reihenklennen |
| Product Key | BE2223 |
| Catalog Page | Page 111 (C-1-2019) |
| GTIN | 4046356538145 |
| Weight per Piece (including packing) | 29,221 g |
| Weight per Piece (excluding packing) | 29,221 g |
| Customs tariff number | 85369010 |
| Country of origin | CN |

Technical Data

Notes

General

| | |
|------|--|
| Note | The max. load current must not be exceeded by the total current of all connected conductors. |
|------|--|

Product properties

| | |
|-----------------------|-----------------------|
| Product type | Ground terminal block |
| Area of application | Railway industry |
| | Machine building |
| | Plant engineering |
| Number of connections | 4 |
| Number of rows | 1 |

Insulation characteristics

| | |
|----------------------|-----|
| Overvoltage category | III |
| Degree of pollution | 3 |

Electrical properties

| | |
|---|--------|
| Rated surge voltage | 8 kV |
| Maximum power dissipation for nominal condition | 1.31 W |

Connection data

| | |
|---------------------------------|-------------------|
| Grounding foot | Yes |
| Number of connections per level | 4 |
| Nominal cross section | 6 mm ² |

1 level

| | |
|---|---|
| Note | Please observe the current carrying capacity of the DIN rails. |
| Stripping length | 10 mm ... 12 mm |
| Internal cylindrical gage | A5 |
| Conductor cross section solid | 0.5 mm ² ... 10 mm ² |
| Cross section AWG | 20 ... 8 |
| Conductor cross section flexible | 0.5 mm ² ... 10 mm ² |
| Conductor cross section, flexible [AWG] | 20 ... 10 |
| Flexible conductor cross section flexible (ferrule, w/o plastic sleeve) | 0.5 mm ² ... 6 mm ² |
| Flexible conductor cross section (ferrule with plastic sleeve) | 0.5 mm ² ... 6 mm ² |
| Conductor cross-section flexible (2 conductors with the same cross-section, with TWIN ferrule and plastic sleeve) | 0.5 mm ² ... 1.5 mm ² |
| 2 conductors with the same cross section, flexible, with TWIN ferrule with plastic sleeve | When using TWIN ferrules, we recommend a minimum ferrule length of 13 mm. |

1 level Connection cross sections directly pluggable

| | |
|-------------------------------|--|
| Conductor cross section solid | 1 mm ² ... 10 mm ² |
|-------------------------------|--|

Ground modular terminal block - PT 6-QUATTRO-PE



3212950

<https://www.phoenixcontact.com/de/produkte/3212950>

| | |
|---|---|
| Flexible conductor cross section flexible (ferrule, w/o plastic sleeve) | 1 mm ² ... 6 mm ² |
| Flexible conductor cross section (ferrule with plastic sleeve) | 1 mm ² ... 6 mm ² |

Ex data

Rated data (ATEX/IECEX)

| | |
|-----------------------------|---|
| ATEX certificate | SEV 13 ATEX 0159 U |
| IEC Ex certificate | IECEX SEV 13.0005 U |
| Identification | Ex eb IIC Gb |
| Operating temperature range | -60 °C ... 110 °C |
| Ex-certified accessories | 3212963 D-PT 6-QUATTRO 1204520 SZF 2-0,8X4,0 3022276 CLIPFIX 35-5 3022218 CLIPFIX 35 |

Ex connection data General

| | |
|------------------------------|--|
| Nominal cross section | 6 mm ² |
| Rated cross section AWG | 10 |
| Connection capacity rigid | 0.5 mm ² ... 10 mm ² |
| Connection capacity AWG | 20 ... 8 |
| Connection capacity flexible | 0.5 mm ² ... 6 mm ² |
| Connection capacity AWG | 20 ... 10 |

Dimensions

| | |
|------------------|---------|
| Width | 8.2 mm |
| End cover width | 2.2 mm |
| Height | 42.2 mm |
| Height NS 35/15 | 51 mm |
| Height NS 35/7,5 | 43.5 mm |
| Length | 90.5 mm |

Material specifications

| | |
|---|--------------|
| Color | green-yellow |
| Flammability rating according to UL 94 | V0 |
| Insulating material group | I |
| Insulating material | PA |
| Static insulating material application in cold | -60 °C |
| Temperature index of insulation material (DIN EN 60216-1 (VDE 0304-21)) | 130 °C |
| Relative insulation material temperature index (Elec., UL 746 B) | 130 °C |
| Fire protection for rail vehicles (DIN EN 45545-2) R22 | HL 1 - HL 3 |
| Fire protection for rail vehicles (DIN EN 45545-2) R23 | HL 1 - HL 3 |
| Fire protection for rail vehicles (DIN EN 45545-2) R24 | HL 1 - HL 3 |
| Fire protection for rail vehicles (DIN EN 45545-2) R26 | HL 1 - HL 3 |
| Calorimetric heat release NFPA 130 (ASTM E 1354) | 28 MJ/kg |

| | |
|---|--------|
| Surface flammability NFPA 130 (ASTM E 162) | passed |
| Specific optical density of smoke NFPA 130 (ASTM E 662) | passed |
| Smoke gas toxicity NFPA 130 (SMP 800C) | passed |

Mechanical properties

Mechanical data

| | |
|-----------------|-----|
| Open side panel | Yes |
|-----------------|-----|

Environmental and real-life conditions

Oscillation/broadband noise

| | |
|------------------------|--|
| Specification | DIN EN 50155 (VDE 0115-200):2008-03 |
| Spectrum | Service life test category 2, bogie-mounted |
| Frequency | $f_1 = 5 \text{ Hz}$ to $f_2 = 250 \text{ Hz}$ |
| ASD level | $6.12 \text{ (m/s}^2\text{)}^2\text{/Hz}$ |
| Acceleration | 3.12g |
| Test duration per axis | 5 h |
| Test directions | X-, Y- and Z-axis |
| Result | Test passed |

Shocks

| | |
|--------------------------------|-------------------------------------|
| Specification | DIN EN 50155 (VDE 0115-200):2008-03 |
| Pulse shape | Half-sine |
| Acceleration | 30g |
| Shock duration | 18 ms |
| Number of shocks per direction | 3 |
| Test directions | X-, Y- and Z-axis (pos. and neg.) |
| Result | Test passed |

Ambient conditions

| | |
|--|---|
| Ambient temperature (operation) | -60 °C ... 105 °C (max. short-term operating temperature RTI Elec.) |
| Ambient temperature (storage/transport) | -25 °C ... 60 °C (for a short time, not exceeding 24 h, -60 °C to +70 °C) |
| Ambient temperature (assembly) | -5 °C ... 70 °C |
| Ambient temperature (actuation) | -5 °C ... 70 °C |
| Permissible humidity (storage/transport) | 30 % ... 70 % |

Standards and regulations

| | |
|----------------------------------|---------------|
| Connection in acc. with standard | IEC 60947-7-2 |
|----------------------------------|---------------|

Mounting

| | |
|---------------|-----------|
| Mounting type | NS 35/7,5 |
| | NS 35/15 |

Ground modular terminal block - PT 6-QUATTRO-PE

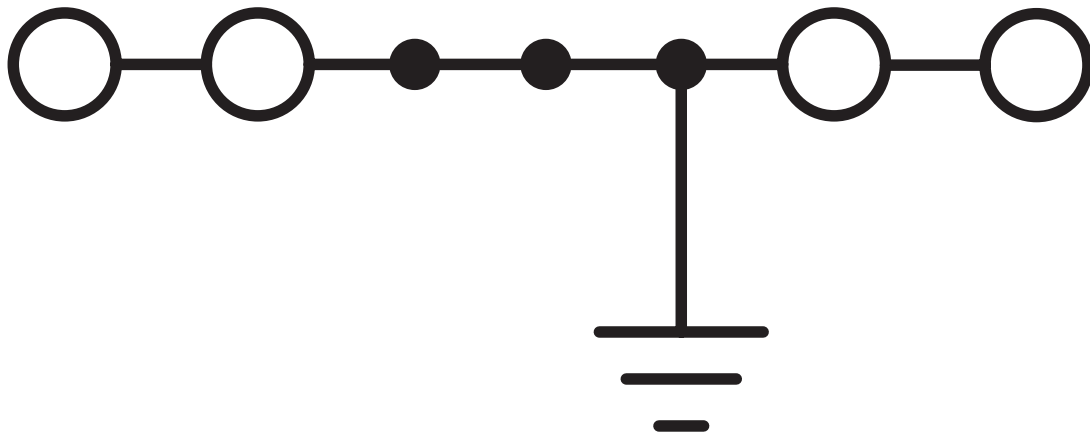


3212950

<https://www.phoenixcontact.com/de/produkte/3212950>

Drawings

Circuit diagram




Ground modular terminal block - PT 6-QUATTRO-PE





3212950


<https://www.phoenixcontact.com/de/produkte/3212950>

Approvals


|  CSA Approval ID: 13631 | | | | |
|--|-----------------------|-----------------------|-------------------|----------------------|
| | Nominal Voltage U_N | Nominal Current I_N | Cross Section AWG | Cross Section mm^2 |
| Use group B | | | 20 - 8 | - |
| Use group C | | | 20 - 8 | - |
| Use group D | | | 20 - 8 | - |

|  IECEE CB Scheme Approval ID: DE1-65860 | | | | |
|--|-----------------------|-----------------------|-------------------|----------------------|
| | Nominal Voltage U_N | Nominal Current I_N | Cross Section AWG | Cross Section mm^2 |
| | | | - | 0.5 - 6 |

|  EAC Approval ID: RU C-DE.AI30.B.01102 | | | | |
|---|--|--|--|--|
|---|--|--|--|--|

|  cULus Recognized Approval ID: E60425 | | | | |
|--|-----------------------|-----------------------|-------------------|----------------------|
| | Nominal Voltage U_N | Nominal Current I_N | Cross Section AWG | Cross Section mm^2 |
| Use group B | | | 20 - 8 | - |
| Use group C | | | 20 - 8 | - |
| Use group F | | | 20 - 8 | - |
| Use group D | | | 20 - 8 | - |

|  LR Approval ID: 12/20038 (E3) | | | | |
|---|--|--|--|--|
|---|--|--|--|--|

|  ClassNK Approval ID: 21ME0004 | | | | |
|---|--|--|--|--|
|---|--|--|--|--|

|  RS Approval ID: 17.00013.272 | | | | |
|--|--|--|--|--|
|--|--|--|--|--|

Ground modular terminal block - PT 6-QUATTRO-PE



3212950

<https://www.phoenixcontact.com/de/produkte/3212950>



BV
Approval ID: 37796/B1 BV



EAC
Approval ID: RU C-DE.BL08.B.00644



VDE Zeichengenehmigung
Approval ID: 40035188

| Nominal Voltage U_N | Nominal Current I_N | Cross Section AWG | Cross Section mm^2 |
|-----------------------|-----------------------|-------------------|-----------------------------|
| | | - | 0.5 - 6 |



PRS
Approval ID: TE/2107/880590/21

ABS

Approval ID: 21-2192245-PDA

DNV

Approval ID: TAE000010T

| Nominal Voltage U_N | Nominal Current I_N | Cross Section AWG | Cross Section mm^2 |
|-----------------------|-----------------------|-------------------|-----------------------------|
| | | - | - |



cUL Recognized
Approval ID: E192998

| Nominal Voltage U_N | Nominal Current I_N | Cross Section AWG | Cross Section mm^2 |
|-----------------------|-----------------------|-------------------|-----------------------------|
| | | 20 - 8 | - |



EAC Ex
Approval ID: RU C-DE.AB72.B.02351



IECEx
Approval ID: IECEx SEV13.0005U



UL Recognized
Approval ID: E192998

| Nominal Voltage U_N | Nominal Current I_N | Cross Section AWG | Cross Section mm^2 |
|-----------------------|-----------------------|-------------------|-----------------------------|
|-----------------------|-----------------------|-------------------|-----------------------------|

Ground modular terminal block - PT 6-QUATTRO-PE



3212950

<https://www.phoenixcontact.com/de/produkte/3212950>

20 - 8

-



ATEX

Approval ID: SEV13ATEX0159U



CCC

Approval ID: 2020322313000631



NEPSI

Approval ID: GYJ20.1198U

cULus Recognized

Ground modular terminal block - PT 6-QUATTRO-PE



3212950

<https://www.phoenixcontact.com/de/produkte/3212950>

Classifications

ECLASS

| | |
|---------------|----------|
| ECLASS-9.0 | 27141141 |
| ECLASS-10.0.1 | 27141141 |
| ECLASS-11.0 | 27141141 |

ETIM

| | |
|----------|----------|
| ETIM 8.0 | EC000901 |
|----------|----------|

UNSPSC

| | |
|-------------|----------|
| UNSPSC 21.0 | 39121400 |
|-------------|----------|

Ground modular terminal block - PT 6-QUATTRO-PE



3212950

<https://www.phoenixcontact.com/de/produkte/3212950>

Environmental Product Compliance

| | |
|------------|---|
| China RoHS | Environmentally friendly use period: unlimited = EFUP-e |
| | No hazardous substances above threshold values |

Ground modular terminal block - PT 6-QUATTRO-PE



3212950

<https://www.phoenixcontact.com/de/produkte/3212950>

Accessories

Plug-in bridge

Plug-in bridge - FBS 2-8 - 3030284

<https://www.phoenixcontact.com/de/produkte/3030284>



Plug-in bridge, pitch: 8.2 mm, color: red

Plug-in bridge

Plug-in bridge - FBS 3-8 - 3030297

<https://www.phoenixcontact.com/de/produkte/3030297>



Plug-in bridge, pitch: 8.2 mm, color: red

Ground modular terminal block - PT 6-QUATTRO-PE

3212950

<https://www.phoenixcontact.com/de/produkte/3212950>

Plug-in bridge

Plug-in bridge - FBS 4-8 - 3030307

<https://www.phoenixcontact.com/de/produkte/3030307>



Plug-in bridge, pitch: 8.2 mm, color: red

Plug-in bridge

Plug-in bridge - FBS 5-8 - 3030310

<https://www.phoenixcontact.com/de/produkte/3030310>



Plug-in bridge, pitch: 8.2 mm, color: red

Ground modular terminal block - PT 6-QUATTRO-PE

3212950

<https://www.phoenixcontact.com/de/produkte/3212950>

Plug-in bridge

Plug-in bridge - FBS 6-8 - 3032470

<https://www.phoenixcontact.com/de/produkte/3032470>



Plug-in bridge, pitch: 8.2 mm, color: red

Plug-in bridge

Plug-in bridge - FBS 10-8 - 3030323

<https://www.phoenixcontact.com/de/produkte/3030323>



Plug-in bridge, pitch: 8.2 mm, color: red

Ground modular terminal block - PT 6-QUATTRO-PE



3212950

<https://www.phoenixcontact.com/de/produkte/3212950>

Plug-in bridge

Plug-in bridge - FBS 2-8 CT - 3033830

<https://www.phoenixcontact.com/de/produkte/3033830>



Plug-in bridge, pitch: 8.2 mm, color: orange

Plug-in bridge

Plug-in bridge - FBS 3-8 CT - 3033831

<https://www.phoenixcontact.com/de/produkte/3033831>



Plug-in bridge, pitch: 8.2 mm, color: orange

Ground modular terminal block - PT 6-QUATTRO-PE

3212950

<https://www.phoenixcontact.com/de/produkte/3212950>

Plug-in bridge

Plug-in bridge - FBS 4-8 CT - 3033832

<https://www.phoenixcontact.com/de/produkte/3033832>



Plug-in bridge, pitch: 8.2 mm, color: orange

Plug-in bridge

Plug-in bridge - FBS 10-8 CT - 3033833

<https://www.phoenixcontact.com/de/produkte/3033833>



Plug-in bridge, pitch: 8.2 mm, color: orange

Ground modular terminal block - PT 6-QUATTRO-PE

3212950

<https://www.phoenixcontact.com/de/produkte/3212950>

Plug-in bridge

Plug-in bridge - FBS 2-8 BU - 3032567

<https://www.phoenixcontact.com/de/produkte/3032567>



Plug-in bridge, pitch: 8.2 mm, color: blue

Plug-in bridge

Plug-in bridge - FBS 3-8 BU - 3032570

<https://www.phoenixcontact.com/de/produkte/3032570>



Plug-in bridge, pitch: 8.2 mm, color: blue

Ground modular terminal block - PT 6-QUATTRO-PE

3212950

<https://www.phoenixcontact.com/de/produkte/3212950>

Plug-in bridge

Plug-in bridge - FBS 4-8 BU - 3032583

<https://www.phoenixcontact.com/de/produkte/3032583>



Plug-in bridge, pitch: 8.2 mm, color: blue

Plug-in bridge

Plug-in bridge - FBS 5-8 BU - 3032596

<https://www.phoenixcontact.com/de/produkte/3032596>



Plug-in bridge, pitch: 8.2 mm, color: blue

Ground modular terminal block - PT 6-QUATTRO-PE

3212950

<https://www.phoenixcontact.com/de/produkte/3212950>

Plug-in bridge

Plug-in bridge - FBS 6-8 BU - 3032677

<https://www.phoenixcontact.com/de/produkte/3032677>



Plug-in bridge, pitch: 8.2 mm, color: blue

Plug-in bridge

Plug-in bridge - FBS 10-8 BU - 3032606

<https://www.phoenixcontact.com/de/produkte/3032606>



Plug-in bridge, pitch: 8.2 mm, color: blue

Ground modular terminal block - PT 6-QUATTRO-PE

3212950

<https://www.phoenixcontact.com/de/produkte/3212950>

Plug-in bridge

Plug-in bridge - FBS 2-8 GY - 3032621

<https://www.phoenixcontact.com/de/produkte/3032621>



Plug-in bridge, pitch: 8.2 mm, color: gray

Plug-in bridge

Plug-in bridge - FBS 3-8 GY - 3032622

<https://www.phoenixcontact.com/de/produkte/3032622>



Plug-in bridge, pitch: 8.2 mm, color: gray

Ground modular terminal block - PT 6-QUATTRO-PE

3212950

<https://www.phoenixcontact.com/de/produkte/3212950>

Plug-in bridge

Plug-in bridge - FBS 4-8 GY - 3032635

<https://www.phoenixcontact.com/de/produkte/3032635>



Plug-in bridge, pitch: 8.2 mm, color: gray

Plug-in bridge

Plug-in bridge - FBS 5-8 GY - 3032648

<https://www.phoenixcontact.com/de/produkte/3032648>



Plug-in bridge, pitch: 8.2 mm, color: gray

Ground modular terminal block - PT 6-QUATTRO-PE

3212950

<https://www.phoenixcontact.com/de/produkte/3212950>

Plug-in bridge

Plug-in bridge - FBS 6-8 GY - 3032664

<https://www.phoenixcontact.com/de/produkte/3032664>



Plug-in bridge, pitch: 8.2 mm, color: gray

Plug-in bridge

Plug-in bridge - FBS 10-8 GY - 3032651

<https://www.phoenixcontact.com/de/produkte/3032651>



Plug-in bridge, pitch: 8.2 mm, color: gray

Ground modular terminal block - PT 6-QUATTRO-PE

3212950

<https://www.phoenixcontact.com/de/produkte/3212950>

Short-circuit connector

Short-circuit connector - FBSRH 2-8 - 3033802

<https://www.phoenixcontact.com/de/produkte/3033802>



Short-circuit connector, pitch: 8.2 mm, color: red

Short-circuit connector

Short-circuit connector - FBSRH 3-8 - 3033803

<https://www.phoenixcontact.com/de/produkte/3033803>



Short-circuit connector, pitch: 8.2 mm, color: red

Ground modular terminal block - PT 6-QUATTRO-PE

3212950

<https://www.phoenixcontact.com/de/produkte/3212950>

Short-circuit connector

Short-circuit connector - FBSRH 4-8 - 3033804

<https://www.phoenixcontact.com/de/produkte/3033804>



Short-circuit connector, pitch: 8.2 mm, color: red

Plug-in bridge

Plug-in bridge - FBSR 2-8 - 3033808

<https://www.phoenixcontact.com/de/produkte/3033808>



Plug-in bridge, pitch: 8.2 mm, color: red

Ground modular terminal block - PT 6-QUATTRO-PE

3212950

<https://www.phoenixcontact.com/de/produkte/3212950>

Plug-in bridge

Plug-in bridge - FBSR 3-8 - 3001597

<https://www.phoenixcontact.com/de/produkte/3001597>



Plug-in bridge, pitch: 8.2 mm, color: red

Plug-in bridge

Plug-in bridge - FBSR 4-8 - 3000585

<https://www.phoenixcontact.com/de/produkte/3000585>



Plug-in bridge, pitch: 8.2 mm, color: red

Ground modular terminal block - PT 6-QUATTRO-PE

3212950

<https://www.phoenixcontact.com/de/produkte/3212950>

Plug-in bridge

Plug-in bridge - FBSR 5-8 - 3033809

<https://www.phoenixcontact.com/de/produkte/3033809>



Plug-in bridge, pitch: 8.2 mm, color: red

Plug-in bridge

Plug-in bridge - FBSR 10-8 - 3001599

<https://www.phoenixcontact.com/de/produkte/3001599>



Plug-in bridge, pitch: 8.2 mm, color: red

Ground modular terminal block - PT 6-QUATTRO-PE

3212950

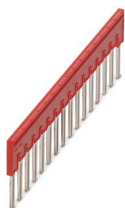
<https://www.phoenixcontact.com/de/produkte/3212950>

Plug-in bridge

Plug-in bridge - FBSR 16-8 - 3033816

<https://www.phoenixcontact.com/de/produkte/3033816>

Plug-in bridge, pitch: 8.2 mm, color: red



End cover

End cover - D-PT 6-QUATTRO - 3212963

<https://www.phoenixcontact.com/de/produkte/3212963>

End cover, length: 90.5 mm, width: 2.2 mm, height: 36 mm, color: gray



Ground modular terminal block - PT 6-QUATTRO-PE



3212950

<https://www.phoenixcontact.com/de/produkte/3212950>

DIN rail perforated

DIN rail perforated - NS 35/ 7,5 PERF 2000MM - 0801733

<https://www.phoenixcontact.com/de/produkte/0801733>



DIN rail perforated, acc. to EN 60715, material: Steel, galvanized, passivated with a thick layer, Standard profile, color: silver, Pack of 25 (50 m)

Screwdriver

Screwdriver - SZF 2-0,8X4,0 - 1204520

<https://www.phoenixcontact.com/de/produkte/1204520>



Actuation tool, for ST terminal blocks, also suitable for use as a bladed screwdriver, size: 0.8 x 4.0 x 100 mm, 2-component grip, with non-slip grip

Ground modular terminal block - PT 6-QUATTRO-PE



3212950

<https://www.phoenixcontact.com/de/produkte/3212950>

DIN rail, unperforated

DIN rail, unperforated - NS 35/ 7,5 UNPERF 2000MM - 0801681

<https://www.phoenixcontact.com/de/produkte/0801681>



DIN rail, unperforated, acc. to EN 60715, material: Steel, galvanized, passivated with a thick layer, Standard profile, color: silver, Pack of 25 (50 m)

Mounting material

Mounting material - PT-IL - 3208090

<https://www.phoenixcontact.com/de/produkte/3208090>

Operating decal for the push-in Technology



Ground modular terminal block - PT 6-QUATTRO-PE



3212950

<https://www.phoenixcontact.com/de/produkte/3212950>

DIN rail perforated

DIN rail perforated - NS 35/ 7,5 WH PERF 2000MM - 1204119

<https://www.phoenixcontact.com/de/produkte/1204119>



DIN rail perforated, acc. to EN 60715, material: Steel, Galvanized, white passivated, Standard profile, color: silver, Pack of 25 (50 m)

Warning label

Warning label - WS PT 6 - 1029029

<https://www.phoenixcontact.com/de/produkte/1029029>



Warning label, yellow/black, labeled: Lightning flash, mounting type: plug in, for terminal block width: 8.2 mm

Ground modular terminal block - PT 6-QUATTRO-PE

3212950

<https://www.phoenixcontact.com/de/produkte/3212950>

DIN rail, unperforated

DIN rail, unperforated - NS 35/ 7,5 WH UNPERF 2000MM-VPE 10 - 1204122

<https://www.phoenixcontact.com/de/produkte/1204122>



DIN rail, unperforated, acc. to EN 60715, material: Steel, Galvanized, white passivated, Standard profile, color: silver, Pack of 10 (20 m)

DIN rail, unperforated

DIN rail, unperforated - NS 35/ 7,5 AL UNPERF 2000MM - 0801704

<https://www.phoenixcontact.com/de/produkte/0801704>



DIN rail, unperforated, acc. to EN 60715, material: Aluminum, uncoated, Standard profile, color: silver, Pack of 25 (50 m)

Ground modular terminal block - PT 6-QUATTRO-PE

3212950

<https://www.phoenixcontact.com/de/produkte/3212950>

DIN rail perforated

DIN rail perforated - NS 35/ 7,5 ZN PERF 2000MM - 1206421

<https://www.phoenixcontact.com/de/produkte/1206421>



DIN rail perforated, acc. to EN 60715, material: Steel, galvanized, Standard profile, color: silver, Pack of 25 (50 m)

DIN rail, unperforated

DIN rail, unperforated - NS 35/ 7,5 ZN UNPERF 2000MM - 1206434

<https://www.phoenixcontact.com/de/produkte/1206434>



DIN rail, unperforated, acc. to EN 60715, material: Steel, galvanized, Standard profile, color: silver, Pack of 25 (50 m)

Ground modular terminal block - PT 6-QUATTRO-PE



3212950

<https://www.phoenixcontact.com/de/produkte/3212950>

DIN rail, unperforated

DIN rail, unperforated - NS 35/ 7,5 CU UNPERF 2000MM-VPE 10 - 0801762

<https://www.phoenixcontact.com/de/produkte/0801762>



DIN rail, unperforated, acc. to EN 60715, material: Copper, uncoated, Standard profile, color: copper-colored, Pack of 10 (20 m)

End cap

End cap - NS 35/ 7,5 CAP - 1206560

<https://www.phoenixcontact.com/de/produkte/1206560>

DIN rail end piece, for DIN rail NS 35/7.5



Ground modular terminal block - PT 6-QUATTRO-PE

3212950

<https://www.phoenixcontact.com/de/produkte/3212950>

DIN rail perforated

DIN rail perforated - NS 35/15 PERF 2000MM - 1201730

<https://www.phoenixcontact.com/de/produkte/1201730>



DIN rail perforated, similar to EN 60715, material: Steel, galvanized, passivated with a thick layer, Standard profile, color: silver, Pack of 25 (50 m)

DIN rail, unperforated

DIN rail, unperforated - NS 35/15 UNPERF 2000MM - 1201714

<https://www.phoenixcontact.com/de/produkte/1201714>



DIN rail, unperforated, similar to EN 60715, material: Steel, galvanized, passivated with a thick layer, Standard profile, color: silver, Pack of 25 (50 m)

Ground modular terminal block - PT 6-QUATTRO-PE

3212950

<https://www.phoenixcontact.com/de/produkte/3212950>

DIN rail perforated

DIN rail perforated - NS 35/15 WH PERF 2000MM - 0806602

<https://www.phoenixcontact.com/de/produkte/0806602>



DIN rail perforated, similar to EN 60715, material: Steel, Galvanized, white passivated, Standard profile, color: white, Pack of 25 (50 m)

DIN rail, unperforated

DIN rail, unperforated - NS 35/15 WH UNPERF 2000MM-VPE 10 - 1204135

<https://www.phoenixcontact.com/de/produkte/1204135>



DIN rail, unperforated, similar to EN 60715, material: Steel, Galvanized, white passivated, Standard profile, color: silver, Pack of 10 (20 m)

Ground modular terminal block - PT 6-QUATTRO-PE

3212950

<https://www.phoenixcontact.com/de/produkte/3212950>

DIN rail, unperforated

DIN rail, unperforated - NS 35/15 AL UNPERF 2000MM - 1201756

<https://www.phoenixcontact.com/de/produkte/1201756>



DIN rail, unperforated, similar to EN 60715, material: Aluminum, uncoated, Standard profile, color: silver

DIN rail perforated

DIN rail perforated - NS 35/15 ZN PERF 2000MM - 1206599

<https://www.phoenixcontact.com/de/produkte/1206599>



DIN rail perforated, similar to EN 60715, material: Steel, galvanized, Standard profile, color: silver, Pack of 25 (50 m)

Ground modular terminal block - PT 6-QUATTRO-PE

3212950

<https://www.phoenixcontact.com/de/produkte/3212950>

DIN rail, unperforated

DIN rail, unperforated - NS 35/15 ZN UNPERF 2000MM - 1206586

<https://www.phoenixcontact.com/de/produkte/1206586>



DIN rail, unperforated, similar to EN 60715, material: Steel, galvanized, Standard profile, color: silver, Pack of 25 (50 m)

DIN rail, unperforated

DIN rail, unperforated - NS 35/15 CU UNPERF 2000MM-VPE 10 - 1201895

<https://www.phoenixcontact.com/de/produkte/1201895>



DIN rail, unperforated, similar to EN 60715, material: Copper, uncoated, Standard profile, color: copper-colored, Pack of 10 (20 m)

Ground modular terminal block - PT 6-QUATTRO-PE

3212950

<https://www.phoenixcontact.com/de/produkte/3212950>

End cap

End cap - NS 35/15 CAP - 1206573

<https://www.phoenixcontact.com/de/produkte/1206573>

DIN rail end piece, for DIN rail NS 35/15



DIN rail, unperforated

DIN rail, unperforated - NS 35/15-2,3 UNPERF 2000MM-VPE 10 - 1201798

<https://www.phoenixcontact.com/de/produkte/1201798>



DIN rail, unperforated, acc. to EN 60715, material: Steel, galvanized, passivated with a thick layer, Standard profile 2.3 mm, color: silver, Pack of 10 (20 m)

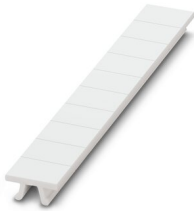
3212950

<https://www.phoenixcontact.com/de/produkte/3212950>

Zack marker strip

Zack marker strip - ZB 8:UNBEDRUCKT - 1052002

<https://www.phoenixcontact.com/de/produkte/1052002>

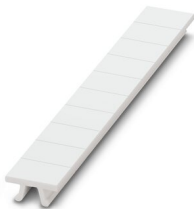


Zack marker strip, Strip, white, unlabeled, can be labeled with: CMS-P1-PLOTTER, PLOTMARK, mounting type: snapped, for terminal block width: 8.2 mm, lettering field size: 10.5 x 8.15 mm, Number of individual labels: 10

Zack marker strip

Zack marker strip - ZB 8 CUS - 0825011

<https://www.phoenixcontact.com/de/produkte/0825011>



Zack marker strip, can be ordered: Strip, white, labeled according to customer specifications, mounting type: snap into tall marker groove, for terminal block width: 8.2 mm, lettering field size: 10.5 x 8.15 mm, Number of individual labels: 10

Ground modular terminal block - PT 6-QUATTRO-PE



3212950

<https://www.phoenixcontact.com/de/produkte/3212950>

Marker for terminal blocks

Marker for terminal blocks - UC-TM 8 - 0818072

<https://www.phoenixcontact.com/de/produkte/0818072>



Marker for terminal blocks, Sheet, white, unlabeled, can be labeled with: BLUEMARK ID COLOR, BLUEMARK ID, BLUEMARK CLED, PLOTMARK, CMS-P1-PLOTTER, mounting type: snapped, for terminal block width: 8.2 mm, lettering field size: 7.6 x 10.5 mm, Number of individual labels: 56

Marker for terminal blocks

Marker for terminal blocks - UC-TM 8 CUS - 0824597

<https://www.phoenixcontact.com/de/produkte/0824597>



Marker for terminal blocks, can be ordered: by sheet, white, labeled according to customer specifications, mounting type: snap into tall marker groove, for terminal block width: 8.2 mm, lettering field size: 7.6 x 10.5 mm, Number of individual labels: 56

Ground modular terminal block - PT 6-QUATTRO-PE

3212950

<https://www.phoenixcontact.com/de/produkte/3212950>

Marker for terminal blocks

Marker for terminal blocks - UCT-TM 8 - 0828740

<https://www.phoenixcontact.com/de/produkte/0828740>



Marker for terminal blocks, Sheet, white, unlabeled, can be labeled with: TOPMARK NEO, TOPMARK LASER, BLUEMARK ID COLOR, BLUEMARK ID, BLUEMARK CLED, THERMOMARK PRIME, THERMOMARK CARD 2.0, THERMOMARK CARD, mounting type: snapped, for terminal block width: 8.2 mm, lettering field size: 7.6 x 10.5 mm, Number of individual labels: 42

Marker for terminal blocks

Marker for terminal blocks - UCT-TM 8 CUS - 0829616

<https://www.phoenixcontact.com/de/produkte/0829616>



Marker for terminal blocks, can be ordered: by sheet, white, labeled according to customer specifications, mounting type: snap into tall marker groove, for terminal block width: 8.2 mm, lettering field size: 7.6 x 10.5 mm, Number of individual labels: 42

Ground modular terminal block - PT 6-QUATTRO-PE

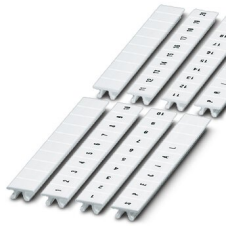
3212950

<https://www.phoenixcontact.com/de/produkte/3212950>

Zack marker strip

Zack marker strip - ZB 8,LGS:FORTL.ZAHLEN - 1052015

<https://www.phoenixcontact.com/de/produkte/1052015>

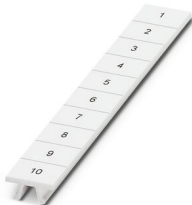


Zack marker strip, Strip, white, labeled, can be labeled with: CMS-P1-PLOTTER, printed horizontally: consecutive numbers 1 ... 10, 11 ... 20, etc. up to 91 ... 100, mounting type: snapped, for terminal block width: 8.2 mm, lettering field size: 10. 5 x 8.15 mm, Number of individual labels: 10

Zack marker strip

Zack marker strip - ZB 8,QR:FORTL.ZAHLEN - 1052028

<https://www.phoenixcontact.com/de/produkte/1052028>



Zack marker strip, Strip, white, labeled, can be labeled with: CMS-P1-PLOTTER, Printed vertically: consecutive numbers 1 ... 10, 11 ... 20, etc. up to 91 ... 100, mounting type: snapped, for terminal block width: 8.2 mm, lettering field size: 10. 5 x 8.15 mm, Number of individual labels: 10

Ground modular terminal block - PT 6-QUATTRO-PE



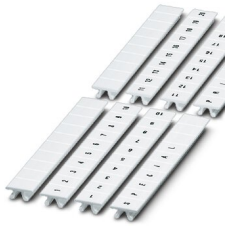
3212950

<https://www.phoenixcontact.com/de/produkte/3212950>

Marker for terminal blocks

Marker for terminal blocks - ZB 8,LGS:L1-N,PE - 1052413

<https://www.phoenixcontact.com/de/produkte/1052413>



Marker for terminal blocks, Strip, white, labeled, can be labeled with: CMS-P1-PLOTTER, horizontal: L1, L2, L3, N, PE, L1, L2, L3, N, PE, mounting type: snapped, for terminal block width: 8.2 mm, lettering field size: 10.5 x 8.15 mm, Number of individual labels: 10

Zack Marker strip, flat

Zack Marker strip, flat - ZBF 8:UNBEDRUCKT - 0808781

<https://www.phoenixcontact.com/de/produkte/0808781>



Zack Marker strip, flat, Strip, white, unlabeled, can be labeled with: PLOTMARK, CMS-P1-PLOTTER, mounting type: snapped, for terminal block width: 8 mm, lettering field size: 5.15 x 8.15 mm, Number of individual labels: 10

Ground modular terminal block - PT 6-QUATTRO-PE

3212950

<https://www.phoenixcontact.com/de/produkte/3212950>

Zack Marker strip, flat

Zack Marker strip, flat - ZBF 8 CUS - 0825030

<https://www.phoenixcontact.com/de/produkte/0825030>



Zack Marker strip, flat, can be ordered: Strip, white, labeled according to customer specifications, mounting type: snap into flat marker groove, for terminal block width: 8 mm, lettering field size: 5.15 x 8.15 mm, Number of individual labels: 10

Zack Marker strip, flat

Zack Marker strip, flat - ZBF 8,LGS:FORTL.ZAHLEN - 0808804

<https://www.phoenixcontact.com/de/produkte/0808804>



Zack Marker strip, flat, Strip, white, labeled, printed horizontally: consecutive numbers 1 ... 10, 11 ... 20, etc. up to 101 ... 110, mounting type: snapped, for terminal block width: 8 mm, lettering field size: 5.15 x 8.15 mm, Number of individual labels: 10

Ground modular terminal block - PT 6-QUATTRO-PE

3212950

<https://www.phoenixcontact.com/de/produkte/3212950>

Marker for terminal blocks

Marker for terminal blocks - UC-TMF 8 - 0818137

<https://www.phoenixcontact.com/de/produkte/0818137>



Marker for terminal blocks, Sheet, white, unlabeled, can be labeled with: BLUEMARK ID COLOR, BLUEMARK ID, BLUEMARK CLED, PLOTMARK, CMS-P1-PLOTTER, mounting type: snapped, for terminal block width: 8.2 mm, lettering field size: 7.6 x 5.1 mm, Number of individual labels: 56

Marker for terminal blocks

Marker for terminal blocks - UC-TMF 8 CUS - 0824654

<https://www.phoenixcontact.com/de/produkte/0824654>



Marker for terminal blocks, can be ordered: by sheet, white, labeled according to customer specifications, mounting type: snap into flat marker groove, for terminal block width: 8.2 mm, lettering field size: 7.6 x 5.1 mm, Number of individual labels: 56

Ground modular terminal block - PT 6-QUATTRO-PE

3212950

<https://www.phoenixcontact.com/de/produkte/3212950>

Marker for terminal blocks

Marker for terminal blocks - UCT-TMF 8 - 0828748

<https://www.phoenixcontact.com/de/produkte/0828748>



Marker for terminal blocks, Sheet, white, unlabeled, can be labeled with: TOPMARK NEO, TOPMARK LASER, BLUEMARK ID COLOR, BLUEMARK ID, BLUEMARK CLED, THERMOMARK PRIME, THERMOMARK CARD 2.0, THERMOMARK CARD, mounting type: snapped, for terminal block width: 8.2 mm, lettering field size: 7.4 x 4.7 mm, Number of individual labels: 42

Marker for terminal blocks

Marker for terminal blocks - UCT-TMF 8 CUS - 0829672

<https://www.phoenixcontact.com/de/produkte/0829672>



Marker for terminal blocks, can be ordered: by sheet, white, labeled according to customer specifications, mounting type: snap into flat marker groove, for terminal block width: 8.2 mm, lettering field size: 7.4 x 4.7 mm, Number of individual labels: 42

Ground modular terminal block - PT 6-QUATTRO-PE



3212950

<https://www.phoenixcontact.com/de/produkte/3212950>

Test plugs

Test plugs - MPS-MT - 0201744

<https://www.phoenixcontact.com/de/produkte/0201744>



Test plugs, with solder connection up to 1 mm² conductor cross section, color: gray

Insulating sleeve

Insulating sleeve - MPS-IH WH - 0201663

<https://www.phoenixcontact.com/de/produkte/0201663>



Insulating sleeve, color: white

Ground modular terminal block - PT 6-QUATTRO-PE

3212950

<https://www.phoenixcontact.com/de/produkte/3212950>

Insulating sleeve

Insulating sleeve - MPS-IH RD - 0201676

<https://www.phoenixcontact.com/de/produkte/0201676>

Insulating sleeve, color: red

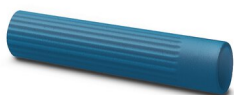


Insulating sleeve

Insulating sleeve - MPS-IH BU - 0201689

<https://www.phoenixcontact.com/de/produkte/0201689>

Insulating sleeve, color: blue



Ground modular terminal block - PT 6-QUATTRO-PE

3212950

<https://www.phoenixcontact.com/de/produkte/3212950>

Insulating sleeve

Insulating sleeve - MPS-IH YE - 0201692

<https://www.phoenixcontact.com/de/produkte/0201692>

Insulating sleeve, color: yellow



Insulating sleeve

Insulating sleeve - MPS-IH GN - 0201702

<https://www.phoenixcontact.com/de/produkte/0201702>

Insulating sleeve, color: green



Ground modular terminal block - PT 6-QUATTRO-PE

3212950

<https://www.phoenixcontact.com/de/produkte/3212950>

Insulating sleeve

Insulating sleeve - MPS-IH GY - 0201728

<https://www.phoenixcontact.com/de/produkte/0201728>

Insulating sleeve, color: gray



Insulating sleeve

Insulating sleeve - MPS-IH BK - 0201731

<https://www.phoenixcontact.com/de/produkte/0201731>

Insulating sleeve, color: black



Ground modular terminal block - PT 6-QUATTRO-PE

3212950

<https://www.phoenixcontact.com/de/produkte/3212950>

Test adapter

Test adapter - PAI-4-FIX BU - 3032729

<https://www.phoenixcontact.com/de/produkte/3032729>



Test adapter, Touch proof against unintentional direct contact according to DIN EN 50274 when plugged in, for 4 mm test plug and terminal blocks with 8.2 mm pitch, color: blue

Test adapter

Test adapter - PAI-4-FIX OG - 3034455

<https://www.phoenixcontact.com/de/produkte/3034455>



4 mm test adapter, for terminal blocks with 8.2 mm pitch

Ground modular terminal block - PT 6-QUATTRO-PE



3212950

<https://www.phoenixcontact.com/de/produkte/3212950>

Test adapter

Test adapter - PAI-4-FIX YE - 3032745

<https://www.phoenixcontact.com/de/produkte/3032745>



Test adapter, Touch proof against unintentional direct contact according to DIN EN 50274 when plugged in, for 4 mm test plug and terminal blocks with 8.2 mm pitch, color: yellow

Test adapter

Test adapter - PAI-4-FIX RD - 3032732

<https://www.phoenixcontact.com/de/produkte/3032732>



Test adapter, Touch proof against unintentional direct contact according to DIN EN 50274 when plugged in, for 4 mm test plug and terminal blocks with 8.2 mm pitch, color: red

Ground modular terminal block - PT 6-QUATTRO-PE

3212950

<https://www.phoenixcontact.com/de/produkte/3212950>

Test adapter

Test adapter - PAI-4-FIX GN - 3032758

<https://www.phoenixcontact.com/de/produkte/3032758>



Test adapter, Touch proof against unintentional direct contact according to DIN EN 50274 when plugged in, for 4 mm test plug and terminal blocks with 8.2 mm pitch, color: green

Test adapter

Test adapter - PAI-4-FIX BK - 3032774

<https://www.phoenixcontact.com/de/produkte/3032774>



Test adapter, Touch proof against unintentional direct contact according to DIN EN 50274 when plugged in, for 4 mm test plug and terminal blocks with 8.2 mm pitch, color: black

Ground modular terminal block - PT 6-QUATTRO-PE



3212950

<https://www.phoenixcontact.com/de/produkte/3212950>

Test adapter

Test adapter - PAI-4-FIX GY - 3032790

<https://www.phoenixcontact.com/de/produkte/3032790>



Test adapter, Touch proof against unintentional direct contact according to DIN EN 50274 when plugged in, for 4 mm test plug and terminal blocks with 8.2 mm pitch, color: gray

Test adapter

Test adapter - PAI-4-FIX VT - 3032761

<https://www.phoenixcontact.com/de/produkte/3032761>



Test adapter, Touch proof against unintentional direct contact according to DIN EN 50274 when plugged in, for 4 mm test plug and terminal blocks with 4.2 mm .. 8.2 mm pitch, color: violet

Ground modular terminal block - PT 6-QUATTRO-PE



3212950

<https://www.phoenixcontact.com/de/produkte/3212950>

Test adapter

Test adapter - PAI-4-FIX BN - 3032787

<https://www.phoenixcontact.com/de/produkte/3032787>



Test adapter, Touch proof against unintentional direct contact according to DIN EN 50274 when plugged in, for 4 mm test plug and terminal blocks with 8.2 mm pitch, color: brown

Test adapter

Test adapter - PAI-4-FIX WH - 3032797

<https://www.phoenixcontact.com/de/produkte/3032797>



4 mm test adapter, for terminal blocks with 8.2 mm pitch

Ground modular terminal block - PT 6-QUATTRO-PE

3212950

<https://www.phoenixcontact.com/de/produkte/3212950>

Test adapter

Test adapter - PAIS-4-FIX GY - 3032791

<https://www.phoenixcontact.com/de/produkte/3032791>



Test adapter, Touch proof against unintentional direct contact according to DIN EN 50274 when plugged in, for 4 mm test plug and terminal blocks with 5.2 mm, 6.2 mm, and 8.2 mm pitch, color: gray

Test adapter

Test adapter - PAIS-4-FIX BK - 3032792

<https://www.phoenixcontact.com/de/produkte/3032792>



Test adapter, Touch proof against unintentional direct contact according to DIN EN 50274 when plugged in, for 4 mm test plug and terminal blocks with 5.2 mm, 6.2 mm, and 8.2 mm pitch, color: black

Ground modular terminal block - PT 6-QUATTRO-PE

3212950

<https://www.phoenixcontact.com/de/produkte/3212950>

Test adapter

Test adapter - PAIS-4-FIX RD - 3032793

<https://www.phoenixcontact.com/de/produkte/3032793>



Test adapter, Do not plug in while the power is connected, for 4 mm test plug and terminal blocks with 5.2 mm, 6.2 mm, and 8.2 mm pitch, color: red

Test adapter

Test adapter - PAIS-4-FIX BU - 3032798

<https://www.phoenixcontact.com/de/produkte/3032798>



Test adapter, Touch proof against unintentional direct contact according to DIN EN 50274 when plugged in, for 4 mm test plug and terminal blocks with 5.2 mm, 6.2 mm, and 8.2 mm pitch, color: blue

Ground modular terminal block - PT 6-QUATTRO-PE

3212950

<https://www.phoenixcontact.com/de/produkte/3212950>

Test adapter

Test adapter - PAIS-4-FIX YE - 3032799

<https://www.phoenixcontact.com/de/produkte/3032799>



Test adapter, Touch proof against unintentional direct contact according to DIN EN 50274 when plugged in, for 4 mm test plug and terminal blocks with 5.2 mm, 6.2 mm, and 8.2 mm pitch, color: yellow

Test adapter

Test adapter - PAIS-4-FIX GN - 3032801

<https://www.phoenixcontact.com/de/produkte/3032801>



Test adapter, Touch proof against unintentional direct contact according to DIN EN 50274 when plugged in, for 4 mm test plug and terminal blocks with 5.2 mm, 6.2 mm, and 8.2 mm pitch, color: green

Ground modular terminal block - PT 6-QUATTRO-PE

3212950

<https://www.phoenixcontact.com/de/produkte/3212950>

Test adapter

Test adapter - PAIS-4-FIX VT - 3032802

<https://www.phoenixcontact.com/de/produkte/3032802>



Test adapter, Touch proof against unintentional direct contact according to DIN EN 50274 when plugged in, for 4 mm test plug and terminal blocks with 5.2 mm, 6.2 mm, and 8.2 mm pitch, color: violet

Test plugs

Test plugs - PS-8 - 3031005

<https://www.phoenixcontact.com/de/produkte/3031005>



Test plugs, Modular test plug, color: red

Ground modular terminal block - PT 6-QUATTRO-PE

3212950

<https://www.phoenixcontact.com/de/produkte/3212950>

Spacer plate

Spacer plate - DP PS-8 - 3036741

<https://www.phoenixcontact.com/de/produkte/3036741>



Spacer plate, length: 22.4 mm, width: 8.2 mm, height: 29 mm, number of positions: 1, color: red

Test plugs

Test plugs - PS-8/2,3MM RD - 3048564

<https://www.phoenixcontact.com/de/produkte/3048564>



Test plugs, color: red

Ground modular terminal block - PT 6-QUATTRO-PE

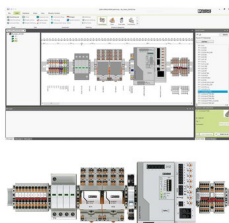
3212950

<https://www.phoenixcontact.com/de/produkte/3212950>

Software

Software - PROJECT COMPLETE - 1050453

<https://www.phoenixcontact.com/de/produkte/1050453>



Intuitive planning and marking software for configuring terminal strips and for professional marking of marking materials for terminal blocks, conductors, cables, devices, and systems. The software is available for download

End clamp

End clamp - E/UK - 1201442

<https://www.phoenixcontact.com/de/produkte/1201442>



End clamp, material: PA, color: gray, Mounting on a DIN rail NS 32 or NS 35

Ground modular terminal block - PT 6-QUATTRO-PE

3212950

<https://www.phoenixcontact.com/de/produkte/3212950>

End clamp

End clamp - E/UK 1 - 1201413

<https://www.phoenixcontact.com/de/produkte/1201413>



End clamps, for supporting the ends of double-level and three-level terminal blocks, width: 10 mm, color: gray

Marker for terminal blocks

Marker for terminal blocks - TMT (EX9,5)R - 0828295

<https://www.phoenixcontact.com/de/produkte/0828295>



Marker for terminal blocks, Roll, white, unlabeled, can be labeled with: THERMOMARK ROLL 2.0, THERMOMARK ROLL, THERMOMARK ROLL X1, THERMOMARK ROLLMASTER 300/600, THERMOMARK X1.2, mounting type: snapped, snap into tall marker groove, for terminal block width: 50000 mm, lettering field size: 9.5 x 50000 mm, Number of individual labels: 1

Ground modular terminal block - PT 6-QUATTRO-PE

3212950

<https://www.phoenixcontact.com/de/produkte/3212950>

Marker for terminal blocks

Marker for terminal blocks - US-TM 100 - 0829255

<https://www.phoenixcontact.com/de/produkte/0829255>



Marker for terminal blocks, Card, white, unlabeled, can be labeled with: BLUEMARK ID COLOR, BLUEMARK ID, THERMOMARK PRIME, THERMOMARK CARD 2.0, THERMOMARK CARD, mounting type: snapped, lettering field size: 104 x 9.8 mm, Number of individual labels: 13

End clamp

End clamp - CLIPFIX 35 - 3022218

<https://www.phoenixcontact.com/de/produkte/3022218>



Quick mounting end clamp for NS 35/7,5 DIN rail or NS 35/15 DIN rail, with marking option, width: 9.5 mm, color: gray

Ground modular terminal block - PT 6-QUATTRO-PE



3212950

<https://www.phoenixcontact.com/de/produkte/3212950>

End clamp

End clamp - CLIPFIX 35-5 - 3022276

<https://www.phoenixcontact.com/de/produkte/3022276>

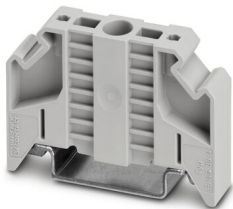


Quick mounting end clamp for NS 35/7,5 DIN rail or NS 35/15 DIN rail, with marking option, with parking option for FBS...5, FBS...6, KSS 5, KSS 6, width: 5.15 mm, color: gray

End clamp

End clamp - E/NS 35 N - 0800886

<https://www.phoenixcontact.com/de/produkte/0800886>



End clamp, width: 9.5 mm, color: gray

Phoenix Contact 2022 © - all rights reserved
<https://www.phoenixcontact.com>

PHOENIX CONTACT Deutschland GmbH
Flachsmarktstraße 8
D-32825 Blomberg
+49 52 35/3-1 20 00
info@phoenixcontact.de