

# Ground modular terminal block - PTS 1,5/S/1P-PE



3214479

<https://www.phoenixcontact.com/de/produkte/3214479>

Please be informed that the data shown in this PDF document is generated from our Online Catalog. Please find the complete data in the user documentation. Our General Terms of Use for Downloads are valid.

---



Ground modular terminal block, number of connections: 2, number of positions: 1, connection method: Push-in / plug connection, 1 level, cross section:  $0.14 \text{ mm}^2 - 1.5 \text{ mm}^2$ , mounting type: NS 35/7,5, NS 35/15, color: green-yellow

---

# Ground modular terminal block - PTS 1,5/S/1P-PE



3214479

<https://www.phoenixcontact.com/de/produkte/3214479>

## Commercial Data

Item number	3214479
Packing unit	50 pc
Minimum order quantity	50 pc
Note	Made to Order (non-returnable)
Sales Key	A1 - Reihenklemmen
Product Key	BE2242
Catalog Page	Page 279 (C-1-2019)
GTIN	4046356623308
Weight per Piece (including packing)	6,198 g
Weight per Piece (excluding packing)	5,966 g
Customs tariff number	85369010
Country of origin	PL

# Ground modular terminal block - PTS 1,5/S/1P-PE



3214479

<https://www.phoenixcontact.com/de/produkte/3214479>

## Technical Data

### Product properties

Product type	Ground terminal block
Number of positions	1
Number of connections	2
Number of rows	1

### Insulation characteristics

Overvoltage category	III
Degree of pollution	3

### Electrical properties

Rated surge voltage	6 kV
Maximum power dissipation for nominal condition	0.56 W

### Connection data

Grounding foot	Yes
Number of connections per level	2
Nominal cross section	1.5 mm <sup>2</sup>

#### 1 level

Note	Please observe the current carrying capacity of the DIN rails.
Stripping length	8 mm ... 10 mm
Internal cylindrical gage	A1 / B1
Conductor cross section solid	0.14 mm <sup>2</sup> ... 1.5 mm <sup>2</sup>
Cross section AWG	26 ... 14
Conductor cross section flexible	0.14 mm <sup>2</sup> ... 1.5 mm <sup>2</sup>
Conductor cross section, flexible [AWG]	26 ... 14
Flexible conductor cross section flexible (ferrule, w/o plastic sleeve)	0.14 mm <sup>2</sup> ... 1.5 mm <sup>2</sup>
Flexible conductor cross section (ferrule with plastic sleeve)	0.14 mm <sup>2</sup> ... 1 mm <sup>2</sup> Using the AI-S 1-8 TQ ferrule, Item No. 1200293, is recommended

#### 1 level Connection cross sections directly pluggable

Conductor cross section solid	0.25 mm <sup>2</sup> ... 1.5 mm <sup>2</sup>
Flexible conductor cross section flexible (ferrule, w/o plastic sleeve)	0.34 mm <sup>2</sup> ... 1.5 mm <sup>2</sup>
Flexible conductor cross section (ferrule with plastic sleeve)	0.34 mm <sup>2</sup> ... 1 mm <sup>2</sup>

### Dimensions

Width	3.5 mm
End cover width	2.2 mm
Height	37 mm
Height NS 35/15	46 mm
Height NS 35/7,5	38.5 mm

# Ground modular terminal block - PTS 1,5/S/1P-PE



3214479

<https://www.phoenixcontact.com/de/produkte/3214479>

Length	50.7 mm
--------	---------

## Material specifications

Color	green-yellow
Flammability rating according to UL 94	V0
Insulating material group	I
Insulating material	PA
Static insulating material application in cold	-60 °C
Temperature index of insulation material (DIN EN 60216-1 (VDE 0304-21))	130 °C
Relative insulation material temperature index (Elec., UL 746 B)	130 °C
Fire protection for rail vehicles (DIN EN 45545-2) R22	HL 1 - HL 3
Fire protection for rail vehicles (DIN EN 45545-2) R23	HL 1 - HL 3
Fire protection for rail vehicles (DIN EN 45545-2) R24	HL 1 - HL 3
Fire protection for rail vehicles (DIN EN 45545-2) R26	HL 1 - HL 3
Calorimetric heat release NFPA 130 (ASTM E 1354)	28 MJ/kg
Surface flammability NFPA 130 (ASTM E 162)	passed
Specific optical density of smoke NFPA 130 (ASTM E 662)	passed
Smoke gas toxicity NFPA 130 (SMP 800C)	passed

## Mechanical properties

### Mechanical data

Open side panel	Yes
-----------------	-----

## Environmental and real-life conditions

### Oscillation/broadband noise

Specification	DIN EN 50155 (VDE 0115-200):2008-03
Spectrum	Service life test category 1, class B, body mounted
Frequency	$f_1 = 5 \text{ Hz}$ to $f_2 = 150 \text{ Hz}$
ASD level	$1.857 \text{ (m/s}^2\text{)}^2\text{/Hz}$
Acceleration	0.8g
Test duration per axis	5 h
Test directions	X-, Y- and Z-axis
Result	Test passed

### Shocks

Specification	DIN EN 50155 (VDE 0115-200):2008-03
Pulse shape	Half-sine
Acceleration	5g
Shock duration	30 ms
Number of shocks per direction	3
Test directions	X-, Y- and Z-axis (pos. and neg.)
Result	Test passed

# Ground modular terminal block - PTS 1,5/S/1P-PE



3214479

<https://www.phoenixcontact.com/de/produkte/3214479>

## Ambient conditions

Ambient temperature (operation)	-60 °C ... 105 °C (max. short-term operating temperature RTI Elec.)
Ambient temperature (storage/transport)	-25 °C ... 60 °C (for a short time, not exceeding 24 h, -60 °C to +70 °C)
Ambient temperature (assembly)	-5 °C ... 70 °C
Ambient temperature (actuation)	-5 °C ... 70 °C
Permissible humidity (storage/transport)	30 % ... 70 %

## Standards and regulations

Connection in acc. with standard	IEC 61984
----------------------------------	-----------

## Mounting

Mounting type	NS 35/7,5
	NS 35/15

# Ground modular terminal block - PTS 1,5/S/1P-PE

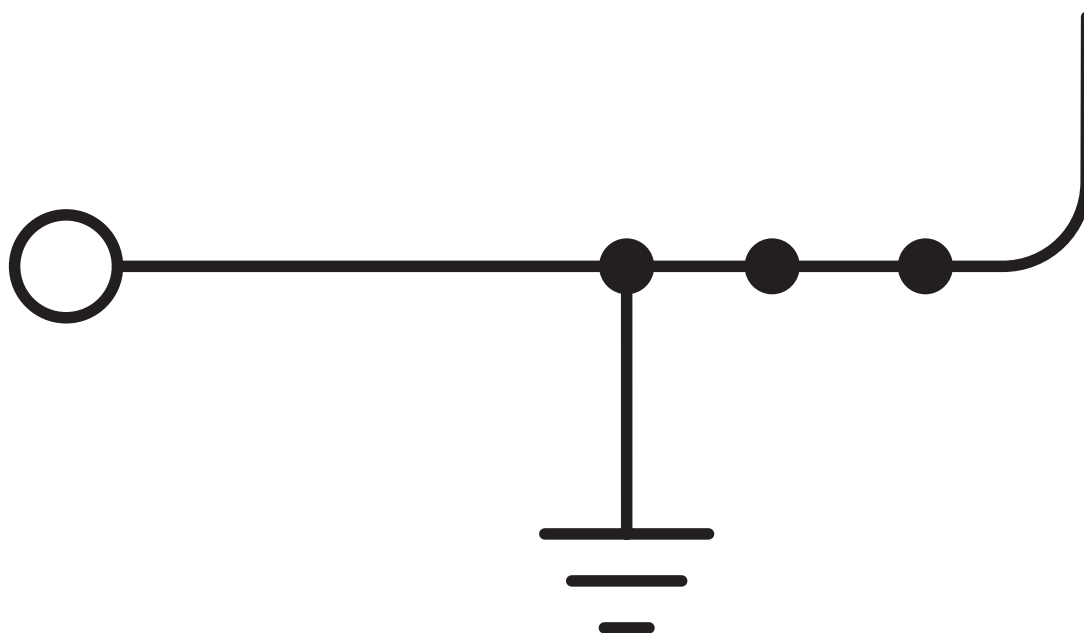


3214479

<https://www.phoenixcontact.com/de/produkte/3214479>

## Drawings

Circuit diagram



# Ground modular terminal block - PTS 1,5/S/1P-PE



3214479

<https://www.phoenixcontact.com/de/produkte/3214479>

## Approvals

**DNV**

Approval ID: TAE00003JE



**CSA**

Approval ID: 13631

Nominal Voltage  $U_N$

Nominal Current  $I_N$

Cross Section AWG

Cross Section  $\text{mm}^2$

26 - 14

-



**IECEE CB Scheme**

Approval ID: DE1-65179

Nominal Voltage  $U_N$

Nominal Current  $I_N$

Cross Section AWG

Cross Section  $\text{mm}^2$

500 V

-

-



**EAC**

Approval ID: RU C-DE.BL08.B.00644



**cULus Recognized**

Approval ID: E60425

Nominal Voltage  $U_N$

Nominal Current  $I_N$

Cross Section AWG

Cross Section  $\text{mm}^2$

Use group B

26 - 14

-

Use group C

26 - 14

-

Use group D

26 - 14

-



**LR**

Approval ID: 12/20038 (E3)



**NK**

Approval ID: 14ME0912



**BV**

Approval ID: 39979/B0 BV



**VDE Gutachten mit Fertigungsüberwachung**

Approval ID: 40034766

# Ground modular terminal block - PTS 1,5/S/1P-PE



3214479

<https://www.phoenixcontact.com/de/produkte/3214479>

	Nominal Voltage $U_N$	Nominal Current $I_N$	Cross Section AWG	Cross Section $\text{mm}^2$
	500 V		-	-



# Ground modular terminal block - PTS 1,5/S/1P-PE



3214479

<https://www.phoenixcontact.com/de/produkte/3214479>

## Classifications

### ECLASS

ECLASS-9.0	27141141
ECLASS-10.0.1	27141141
ECLASS-11.0	27141141

### ETIM

ETIM 8.0	EC000901
----------	----------

### UNSPSC

UNSPSC 21.0	39121400
-------------	----------

# Ground modular terminal block - PTS 1,5/S/1P-PE



3214479

<https://www.phoenixcontact.com/de/produkte/3214479>

## Environmental Product Compliance

China RoHS	Environmentally friendly use period: unlimited = EFUP-e
	No hazardous substances above threshold values

# Ground modular terminal block - PTS 1,5/S/1P-PE



3214479

<https://www.phoenixcontact.com/de/produkte/3214479>

## Accessories

### Plug-in bridge

Plug-in bridge - FBS 3-3,5 BU - 3213099

<https://www.phoenixcontact.com/de/produkte/3213099>



Plug-in bridge, pitch: 3.5 mm, color: blue

---

### Plug-in bridge

Plug-in bridge - FBS 4-3,5 BU - 3213109

<https://www.phoenixcontact.com/de/produkte/3213109>



Plug-in bridge, pitch: 3.5 mm, color: blue

# Ground modular terminal block - PTS 1,5/S/1P-PE

3214479

<https://www.phoenixcontact.com/de/produkte/3214479>

## Plug-in bridge

Plug-in bridge - FBS 5-3,5 BU - 3213112

<https://www.phoenixcontact.com/de/produkte/3213112>



Plug-in bridge, pitch: 3.5 mm, color: blue

---

## Plug-in bridge

Plug-in bridge - FBS 10-3,5 BU - 3213125

<https://www.phoenixcontact.com/de/produkte/3213125>



Plug-in bridge, pitch: 3.5 mm, color: blue

# Ground modular terminal block - PTS 1,5/S/1P-PE



3214479

<https://www.phoenixcontact.com/de/produkte/3214479>

## Plug-in bridge

Plug-in bridge - FBS 20-3,5 BU - 3213138

<https://www.phoenixcontact.com/de/produkte/3213138>



Plug-in bridge, pitch: 3.5 mm, color: blue

---

## Plug-in bridge

Plug-in bridge - FBS 2-3,5 - 3213014

<https://www.phoenixcontact.com/de/produkte/3213014>



Plug-in bridge, pitch: 3.5 mm, color: red

# Ground modular terminal block - PTS 1,5/S/1P-PE

3214479

<https://www.phoenixcontact.com/de/produkte/3214479>

## Plug-in bridge

Plug-in bridge - FBS 3-3,5 - 3213027

<https://www.phoenixcontact.com/de/produkte/3213027>



Plug-in bridge, pitch: 3.5 mm, color: red

---

## Plug-in bridge

Plug-in bridge - FBS 4-3,5 - 3213030

<https://www.phoenixcontact.com/de/produkte/3213030>



Plug-in bridge, pitch: 3.5 mm, color: red

# Ground modular terminal block - PTS 1,5/S/1P-PE

3214479

<https://www.phoenixcontact.com/de/produkte/3214479>

## Plug-in bridge

Plug-in bridge - FBS 5-3,5 - 3213043

<https://www.phoenixcontact.com/de/produkte/3213043>



Plug-in bridge, pitch: 3.5 mm, color: red

---

## Plug-in bridge

Plug-in bridge - FBS 10-3,5 - 3213056

<https://www.phoenixcontact.com/de/produkte/3213056>



Plug-in bridge, pitch: 3.5 mm, color: red

# Ground modular terminal block - PTS 1,5/S/1P-PE

3214479

<https://www.phoenixcontact.com/de/produkte/3214479>

## Plug-in bridge

Plug-in bridge - FBS 20-3,5 - 3213069

<https://www.phoenixcontact.com/de/produkte/3213069>



Plug-in bridge, pitch: 3.5 mm, color: red

---

## Plug-in bridge

Plug-in bridge - FBS 2-3,5 GY - 3213153

<https://www.phoenixcontact.com/de/produkte/3213153>



Plug-in bridge, pitch: 3.5 mm, color: gray



# Ground modular terminal block - PTS 1,5/S/1P-PE

3214479

<https://www.phoenixcontact.com/de/produkte/3214479>

## Plug-in bridge

Plug-in bridge - FBS 2-3,5 BU - 3213086

<https://www.phoenixcontact.com/de/produkte/3213086>



Plug-in bridge, pitch: 3.5 mm, color: blue

---

## Plug-in bridge

Plug-in bridge - FBS 3-3,5 GY - 3213167

<https://www.phoenixcontact.com/de/produkte/3213167>



Plug-in bridge, pitch: 3.5 mm, color: gray

# Ground modular terminal block - PTS 1,5/S/1P-PE

3214479

<https://www.phoenixcontact.com/de/produkte/3214479>

## Plug-in bridge

Plug-in bridge - FBS 4-3,5 GY - 3213180

<https://www.phoenixcontact.com/de/produkte/3213180>



Plug-in bridge, pitch: 3.5 mm, color: gray

---

## Plug-in bridge

Plug-in bridge - FBS 5-3,5 GY - 3213183

<https://www.phoenixcontact.com/de/produkte/3213183>



Plug-in bridge, pitch: 3.5 mm, color: gray

---

# Ground modular terminal block - PTS 1,5/S/1P-PE

3214479

<https://www.phoenixcontact.com/de/produkte/3214479>

## Plug-in bridge

Plug-in bridge - FBS 10-3,5 GY - 3213196

<https://www.phoenixcontact.com/de/produkte/3213196>



Plug-in bridge, pitch: 3.5 mm, color: gray

---

## Plug-in bridge

Plug-in bridge - FBS 20-3,5 GY - 3213206

<https://www.phoenixcontact.com/de/produkte/3213206>



Plug-in bridge, pitch: 3.5 mm, color: gray

# Ground modular terminal block - PTS 1,5/S/1P-PE

3214479

<https://www.phoenixcontact.com/de/produkte/3214479>

## Group marker label for terminal marking

Group marker label for terminal marking - GBS-ZB/26X6 - 0809298

<https://www.phoenixcontact.com/de/produkte/0809298>



Group marking label, snaps onto terminal center for screw, spring-cage and quick connection terminal blocks, labeled with ESL 26x6 mm or EST 25x6 mm, in the foot part with Zack marker strip, length: 29 mm

---

## DIN rail perforated

DIN rail perforated - NS 35/ 7,5 PERF 2000MM - 0801733

<https://www.phoenixcontact.com/de/produkte/0801733>



DIN rail perforated, acc. to EN 60715, material: Steel, galvanized, passivated with a thick layer, Standard profile, color: silver, Pack of 25 (50 m)

# Ground modular terminal block - PTS 1,5/S/1P-PE



3214479

<https://www.phoenixcontact.com/de/produkte/3214479>

## Screwdriver

Screwdriver - SZF 0-0,4X2,5 - 1204504

<https://www.phoenixcontact.com/de/produkte/1204504>



Actuation tool, for ST terminal blocks, also suitable for use as a bladed screwdriver, size: 0.4 x 2.5 x 75 mm, 2-component grip, with non-slip grip

---

## DIN rail, unperforated

DIN rail, unperforated - NS 35/ 7,5 UNPERF 2000MM - 0801681

<https://www.phoenixcontact.com/de/produkte/0801681>



DIN rail, unperforated, acc. to EN 60715, material: Steel, galvanized, passivated with a thick layer, Standard profile, color: silver, Pack of 25 (50 m)

# Ground modular terminal block - PTS 1,5/S/1P-PE

3214479

<https://www.phoenixcontact.com/de/produkte/3214479>

## Partition plate

Partition plate - ATP-ST 4 - 3030721

<https://www.phoenixcontact.com/de/produkte/3030721>



Partition plate, length: 59.8 mm, width: 2 mm, height: 39 mm, color: gray

---

## DIN rail perforated

DIN rail perforated - NS 35/ 7,5 WH PERF 2000MM - 1204119

<https://www.phoenixcontact.com/de/produkte/1204119>



DIN rail perforated, acc. to EN 60715, material: Steel, Galvanized, white passivated, Standard profile, color: silver, Pack of 25 (50 m)

# Ground modular terminal block - PTS 1,5/S/1P-PE



3214479

<https://www.phoenixcontact.com/de/produkte/3214479>

## End cover

End cover - D-PTS 1,5/S - 3214576

<https://www.phoenixcontact.com/de/produkte/3214576>

End cover, length: 50.5 mm, width: 2.2 mm, height: 30.8 mm, color: gray



---

## DIN rail, unperforated

DIN rail, unperforated - NS 35/ 7,5 WH UNPERF 2000MM-VPE 10 - 1204122

<https://www.phoenixcontact.com/de/produkte/1204122>

DIN rail, unperforated, acc. to EN 60715, material: Steel, Galvanized, white passivated, Standard profile, color: silver, Pack of 10 (20 m)



# Ground modular terminal block - PTS 1,5/S/1P-PE

3214479

<https://www.phoenixcontact.com/de/produkte/3214479>

## Coding star

Coding star - PC - 3040588

<https://www.phoenixcontact.com/de/produkte/3040588>

Coding star, length: 3 mm, width: 3 mm, height: 6 mm, color: red



---

## DIN rail, unperforated

DIN rail, unperforated - NS 35/ 7,5 AL UNPERF 2000MM - 0801704

<https://www.phoenixcontact.com/de/produkte/0801704>



DIN rail, unperforated, acc. to EN 60715, material: Aluminum, uncoated, Standard profile, color: silver, Pack of 25 (50 m)



# Ground modular terminal block - PTS 1,5/S/1P-PE



3214479

<https://www.phoenixcontact.com/de/produkte/3214479>

## Mounting material

Mounting material - PT-IL - 3208090

<https://www.phoenixcontact.com/de/produkte/3208090>

Operating decal for the push-in Technology



---

## DIN rail perforated

DIN rail perforated - NS 35/ 7,5 ZN PERF 2000MM - 1206421

<https://www.phoenixcontact.com/de/produkte/1206421>



DIN rail perforated, acc. to EN 60715, material: Steel, galvanized, Standard profile, color: silver, Pack of 25 (50 m)

# Ground modular terminal block - PTS 1,5/S/1P-PE



3214479

<https://www.phoenixcontact.com/de/produkte/3214479>

## Actuation tool

Actuation tool - ST-BW 0 - 1200135

<https://www.phoenixcontact.com/de/produkte/1200135>

Actuation tool, for all 1.5 mm<sup>2</sup> spring cages from PT 1,5/S and FT 1,5/S



---

## DIN rail, unperforated

DIN rail, unperforated - NS 35/ 7,5 ZN UNPERF 2000MM - 1206434

<https://www.phoenixcontact.com/de/produkte/1206434>



DIN rail, unperforated, acc. to EN 60715, material: Steel, galvanized, Standard profile, color: silver, Pack of 25 (50 m)

# Ground modular terminal block - PTS 1,5/S/1P-PE



3214479

<https://www.phoenixcontact.com/de/produkte/3214479>

## Ferrule

Ferrule - AI-S 1 - 8 TQ - 1200293

<https://www.phoenixcontact.com/de/produkte/1200293>



Ferrule, S-Slimline, sleeve length: 8 mm, length: 14.5 mm, color: turquoise

---

## DIN rail, unperforated

DIN rail, unperforated - NS 35/ 7,5 CU UNPERF 2000MM-VPE 10 - 0801762

<https://www.phoenixcontact.com/de/produkte/0801762>



DIN rail, unperforated, acc. to EN 60715, material: Copper, uncoated, Standard profile, color: copper-colored, Pack of 10 (20 m)

# Ground modular terminal block - PTS 1,5/S/1P-PE

3214479

<https://www.phoenixcontact.com/de/produkte/3214479>

## End cap

End cap - NS 35/ 7,5 CAP - 1206560

<https://www.phoenixcontact.com/de/produkte/1206560>

DIN rail end piece, for DIN rail NS 35/7.5



---

## DIN rail perforated

DIN rail perforated - NS 35/15 PERF 2000MM - 1201730

<https://www.phoenixcontact.com/de/produkte/1201730>



DIN rail perforated, similar to EN 60715, material: Steel, galvanized, passivated with a thick layer, Standard profile, color: silver, Pack of 25 (50 m)

# Ground modular terminal block - PTS 1,5/S/1P-PE



3214479

<https://www.phoenixcontact.com/de/produkte/3214479>

## DIN rail, unperforated

DIN rail, unperforated - NS 35/15 UNPERF 2000MM - 1201714

<https://www.phoenixcontact.com/de/produkte/1201714>



DIN rail, unperforated, similar to EN 60715, material: Steel, galvanized, passivated with a thick layer, Standard profile, color: silver, Pack of 25 (50 m)

---

## DIN rail perforated

DIN rail perforated - NS 35/15 WH PERF 2000MM - 0806602

<https://www.phoenixcontact.com/de/produkte/0806602>



DIN rail perforated, similar to EN 60715, material: Steel, Galvanized, white passivated, Standard profile, color: white, Pack of 25 (50 m)

# Ground modular terminal block - PTS 1,5/S/1P-PE

3214479

<https://www.phoenixcontact.com/de/produkte/3214479>

## DIN rail, unperforated

DIN rail, unperforated - NS 35/15 WH UNPERF 2000MM-VPE 10 - 1204135

<https://www.phoenixcontact.com/de/produkte/1204135>



DIN rail, unperforated, similar to EN 60715, material: Steel, Galvanized, white passivated, Standard profile, color: silver, Pack of 10 (20 m)

---

## DIN rail, unperforated

DIN rail, unperforated - NS 35/15 AL UNPERF 2000MM - 1201756

<https://www.phoenixcontact.com/de/produkte/1201756>



DIN rail, unperforated, similar to EN 60715, material: Aluminum, uncoated, Standard profile, color: silver

# Ground modular terminal block - PTS 1,5/S/1P-PE

3214479

<https://www.phoenixcontact.com/de/produkte/3214479>

## DIN rail perforated

DIN rail perforated - NS 35/15 ZN PERF 2000MM - 1206599

<https://www.phoenixcontact.com/de/produkte/1206599>



DIN rail perforated, similar to EN 60715, material: Steel, galvanized, Standard profile, color: silver, Pack of 25 (50 m)

---

## DIN rail, unperforated

DIN rail, unperforated - NS 35/15 ZN UNPERF 2000MM - 1206586

<https://www.phoenixcontact.com/de/produkte/1206586>



DIN rail, unperforated, similar to EN 60715, material: Steel, galvanized, Standard profile, color: silver, Pack of 25 (50 m)

# Ground modular terminal block - PTS 1,5/S/1P-PE

3214479

<https://www.phoenixcontact.com/de/produkte/3214479>

## DIN rail, unperforated

DIN rail, unperforated - NS 35/15 CU UNPERF 2000MM-VPE 10 - 1201895

<https://www.phoenixcontact.com/de/produkte/1201895>



DIN rail, unperforated, similar to EN 60715, material: Copper, uncoated, Standard profile, color: copper-colored, Pack of 10 (20 m)

---

## End cap

End cap - NS 35/15 CAP - 1206573

<https://www.phoenixcontact.com/de/produkte/1206573>

DIN rail end piece, for DIN rail NS 35/15





# Ground modular terminal block - PTS 1,5/S/1P-PE

3214479

<https://www.phoenixcontact.com/de/produkte/3214479>

## DIN rail, unperforated

DIN rail, unperforated - NS 35/15-2,3 UNPERF 2000MM-VPE 10 - 1201798

<https://www.phoenixcontact.com/de/produkte/1201798>



DIN rail, unperforated, acc. to EN 60715, material: Steel, galvanized, passivated with a thick layer, Standard profile 2.3 mm, color: silver, Pack of 10 (20 m)

---

## Zack marker strip

Zack marker strip - ZB 3,5:UNBEDRUCKT - 0829414

<https://www.phoenixcontact.com/de/produkte/0829414>



Zack marker strip, Strip, white, unlabeled, can be labeled with: PLOTMARK, CMS-P1-PLOTTER, mounting type: snapped, for terminal block width: 3.5 mm, lettering field size: 3.5 x 10.5 mm, Number of individual labels: 10

# Ground modular terminal block - PTS 1,5/S/1P-PE

3214479

<https://www.phoenixcontact.com/de/produkte/3214479>

## Zack marker strip

Zack marker strip - ZB 3,5 CUS - 0829415

<https://www.phoenixcontact.com/de/produkte/0829415>



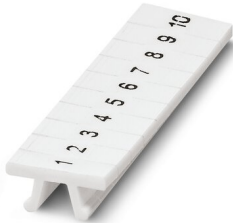
Zack marker strip, can be ordered: Strip, white, labeled according to customer specifications, mounting type: snap into tall marker groove, for terminal block width: 3.5 mm, lettering field size: 3.5 x 10.5 mm, Number of individual labels: 10

---

## Zack marker strip

Zack marker strip - ZB 3,5,LGS:FORTL.ZAHLEN - 0801404

<https://www.phoenixcontact.com/de/produkte/0801404>



Zack marker strip, Strip, white, labeled, printed horizontally: consecutive numbers 1 ... 10, 11 ... 20, etc. up to 91 ... 100, mounting type: snapped, for terminal block width: 3.5 mm, lettering field size: 3.5 x 10.5 mm, Number of individual labels: 10

# Ground modular terminal block - PTS 1,5/S/1P-PE

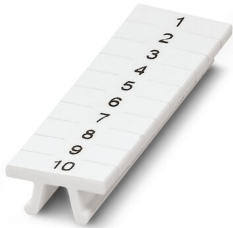
3214479

<https://www.phoenixcontact.com/de/produkte/3214479>

## Zack marker strip

Zack marker strip - ZB 3,5,QR:FORT.ZAHLEN - 0801405

<https://www.phoenixcontact.com/de/produkte/0801405>



Zack marker strip, Strip, white, labeled, Printed vertically: consecutive numbers 1 ... 10, 11 ... 20, etc. up to 91 ... 100, mounting type: snapped, for terminal block width: 3.5 mm, lettering field size: 3.5 x 10.5 mm, Number of individual labels: 10

---

## Marker for terminal blocks

Marker for terminal blocks - UCT-TM 3,5 - 0829484

<https://www.phoenixcontact.com/de/produkte/0829484>



Marker for terminal blocks, Sheet, white, unlabeled, can be labeled with: TOPMARK NEO, TOPMARK LASER, BLUEMARK ID COLOR, BLUEMARK ID, BLUEMARK CLED, THERMOMARK PRIME, THERMOMARK CARD 2.0, THERMOMARK CARD, mounting type: snapped, for terminal block width: 3.5 mm, lettering field size: 2.95 x 10.5 mm, Number of individual labels: 102

# Ground modular terminal block - PTS 1,5/S/1P-PE



3214479

<https://www.phoenixcontact.com/de/produkte/3214479>

## Marker for terminal blocks

Marker for terminal blocks - UCT-TM 3,5 CUS - 0829581

<https://www.phoenixcontact.com/de/produkte/0829581>



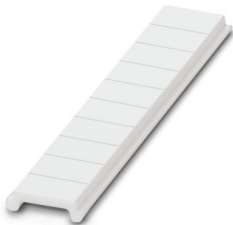
Marker for terminal blocks, can be ordered: by sheet, white, labeled according to customer specifications, mounting type: snap into tall marker groove, for terminal block width: 3.5 mm, lettering field size: 2.95 x 10.5 mm, Number of individual labels: 102

---

## Zack Marker strip, flat

Zack Marker strip, flat - ZBF 3,5:UNBEDRUCKT - 0829392

<https://www.phoenixcontact.com/de/produkte/0829392>



Zack Marker strip, flat, Strip, white, unlabeled, can be labeled with: PLOTMARK, CMS-P1-PLOTTER, mounting type: snapped, for terminal block width: 3.5 mm, lettering field size: 3.5 x 5.2 mm, Number of individual labels: 10

# Ground modular terminal block - PTS 1,5/S/1P-PE

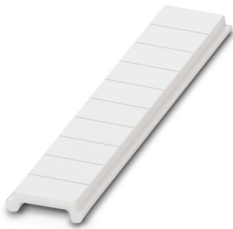
3214479

<https://www.phoenixcontact.com/de/produkte/3214479>

## Zack Marker strip, flat

Zack Marker strip, flat - ZBF 3,5 CUS - 0829394

<https://www.phoenixcontact.com/de/produkte/0829394>



Zack Marker strip, flat, can be ordered: Strip, white, labeled according to customer specifications, mounting type: snap into flat marker groove, for terminal block width: 3.5 mm, lettering field size: 3.5 x 5.2 mm, Number of individual labels: 10

---

## Zack Marker strip, flat

Zack Marker strip, flat - ZBF 3,5,LGS:FORTL.ZAHLEN - 0801406

<https://www.phoenixcontact.com/de/produkte/0801406>



Zack Marker strip, flat, Strip, white, labeled, printed horizontally: consecutive numbers 1 ... 10, 11 ... 20, etc. up to 91 ... 100, mounting type: snapped, for terminal block width: 3.5 mm, lettering field size: 5.15 x 3.5 mm, Number of individual labels: 10

# Ground modular terminal block - PTS 1,5/S/1P-PE

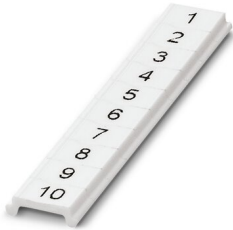
3214479

<https://www.phoenixcontact.com/de/produkte/3214479>

## Zack Marker strip, flat

Zack Marker strip, flat - ZBF 3,5,QR:FORTL.ZAHLEN - 0801407

<https://www.phoenixcontact.com/de/produkte/0801407>



Zack Marker strip, flat, Strip, white, labeled, Printed vertically: consecutive numbers 1 ... 10, 11 ... 20, etc. up to 91 ... 100, mounting type: snapped, for terminal block width: 3.5 mm, lettering field size: 5.15 x 3.5 mm, Number of individual labels: 10

---

## Marker for terminal blocks

Marker for terminal blocks - UCT-TMF 3,5 - 0829486

<https://www.phoenixcontact.com/de/produkte/0829486>



Marker for terminal blocks, Sheet, white, unlabeled, can be labeled with: TOPMARK NEO, TOPMARK LASER, BLUEMARK ID COLOR, BLUEMARK ID, BLUEMARK CLED, THERMOMARK PRIME, THERMOMARK CARD 2.0, THERMOMARK CARD, mounting type: snapped, for terminal block width: 3.5 mm, lettering field size: 2.7 x 4.7 mm, Number of individual labels: 108

# Ground modular terminal block - PTS 1,5/S/1P-PE

3214479

<https://www.phoenixcontact.com/de/produkte/3214479>

## Marker for terminal blocks

Marker for terminal blocks - UCT-TMF 3,5 CUS - 0829644

<https://www.phoenixcontact.com/de/produkte/0829644>



Marker for terminal blocks, can be ordered: by sheet, white, labeled according to customer specifications, mounting type: snap into flat marker groove, for terminal block width: 3.5 mm, lettering field size: 2.7 x 4.7 mm, Number of individual labels: 108

---

## Test plugs

Test plugs - MPS-MT - 0201744

<https://www.phoenixcontact.com/de/produkte/0201744>



Test plugs, with solder connection up to 1 mm<sup>2</sup> conductor cross section, color: gray

# Ground modular terminal block - PTS 1,5/S/1P-PE

3214479

<https://www.phoenixcontact.com/de/produkte/3214479>

## Insulating sleeve

Insulating sleeve - MPS-IH WH - 0201663

<https://www.phoenixcontact.com/de/produkte/0201663>

Insulating sleeve, color: white



---

## Insulating sleeve

Insulating sleeve - MPS-IH RD - 0201676

<https://www.phoenixcontact.com/de/produkte/0201676>

Insulating sleeve, color: red





# Ground modular terminal block - PTS 1,5/S/1P-PE

3214479

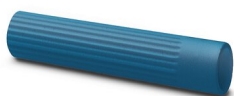
<https://www.phoenixcontact.com/de/produkte/3214479>

## Insulating sleeve

Insulating sleeve - MPS-IH BU - 0201689

<https://www.phoenixcontact.com/de/produkte/0201689>

Insulating sleeve, color: blue



---

## Insulating sleeve

Insulating sleeve - MPS-IH YE - 0201692

<https://www.phoenixcontact.com/de/produkte/0201692>

Insulating sleeve, color: yellow



# Ground modular terminal block - PTS 1,5/S/1P-PE

3214479

<https://www.phoenixcontact.com/de/produkte/3214479>

## Insulating sleeve

Insulating sleeve - MPS-IH GN - 0201702

<https://www.phoenixcontact.com/de/produkte/0201702>

Insulating sleeve, color: green



---

## Insulating sleeve

Insulating sleeve - MPS-IH GY - 0201728

<https://www.phoenixcontact.com/de/produkte/0201728>

Insulating sleeve, color: gray



# Ground modular terminal block - PTS 1,5/S/1P-PE



3214479

<https://www.phoenixcontact.com/de/produkte/3214479>

## Insulating sleeve

Insulating sleeve - MPS-IH BK - 0201731

<https://www.phoenixcontact.com/de/produkte/0201731>

Insulating sleeve, color: black



---

## Software

Software - PROJECT COMPLETE - 1050453

<https://www.phoenixcontact.com/de/produkte/1050453>



Intuitive planning and marking software for configuring terminal strips and for professional marking of marking materials for terminal blocks, conductors, cables, devices, and systems. The software is available for download

# Ground modular terminal block - PTS 1,5/S/1P-PE

3214479

<https://www.phoenixcontact.com/de/produkte/3214479>

## End clamp

End clamp - E/UK - 1201442

<https://www.phoenixcontact.com/de/produkte/1201442>

End clamp, material: PA, color: gray, Mounting on a DIN rail NS 32 or NS 35



---

## End clamp

End clamp - E/UK 1 - 1201413

<https://www.phoenixcontact.com/de/produkte/1201413>

End clamps, for supporting the ends of double-level and three-level terminal blocks, width: 10 mm, color: gray



# Ground modular terminal block - PTS 1,5/S/1P-PE



3214479

<https://www.phoenixcontact.com/de/produkte/3214479>

## Marker for terminal blocks

Marker for terminal blocks - TMT (EX9,5)R - 0828295

<https://www.phoenixcontact.com/de/produkte/0828295>



Marker for terminal blocks, Roll, white, unlabeled, can be labeled with: THERMOMARK ROLL 2.0, THERMOMARK ROLL, THERMOMARK ROLL X1, THERMOMARK ROLLMASTER 300/600, THERMOMARK X1.2, mounting type: snapped, snap into tall marker groove, for terminal block width: 50000 mm, lettering field size: 9.5 x 50000 mm, Number of individual labels: 1

---

## Marker for terminal blocks

Marker for terminal blocks - US-TM 100 - 0829255

<https://www.phoenixcontact.com/de/produkte/0829255>



Marker for terminal blocks, Card, white, unlabeled, can be labeled with: BLUEMARK ID COLOR, BLUEMARK ID, THERMOMARK PRIME, THERMOMARK CARD 2.0, THERMOMARK CARD, mounting type: snapped, lettering field size: 104 x 9.8 mm, Number of individual labels: 13

# Ground modular terminal block - PTS 1,5/S/1P-PE

3214479

<https://www.phoenixcontact.com/de/produkte/3214479>

## End clamp

End clamp - CLIPFIX 35 - 3022218

<https://www.phoenixcontact.com/de/produkte/3022218>



Quick mounting end clamp for NS 35/7,5 DIN rail or NS 35/15 DIN rail, with marking option, width: 9.5 mm, color: gray

---

## End clamp

End clamp - CLIPFIX 35-5 - 3022276

<https://www.phoenixcontact.com/de/produkte/3022276>



Quick mounting end clamp for NS 35/7,5 DIN rail or NS 35/15 DIN rail, with marking option, with parking option for FBS...5, FBS...6, KSS 5, KSS 6, width: 5.15 mm, color: gray

# Ground modular terminal block - PTS 1,5/S/1P-PE

3214479

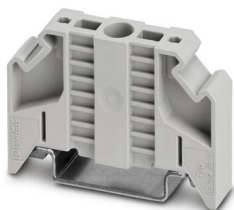
<https://www.phoenixcontact.com/de/produkte/3214479>

## End clamp

End clamp - E/NS 35 N - 0800886

<https://www.phoenixcontact.com/de/produkte/0800886>

End clamp, width: 9.5 mm, color: gray



---

## Test plugs

Test plugs - PS-3,5 - 3031010

<https://www.phoenixcontact.com/de/produkte/3031010>

Test plugs, Modular test plug, color: red



# Ground modular terminal block - PTS 1,5/S/1P-PE



3214479

<https://www.phoenixcontact.com/de/produkte/3214479>

## Spacer plate

Spacer plate - DP PS-3,5 - 3031011

<https://www.phoenixcontact.com/de/produkte/3031011>



Spacer plate, length: 15.9 mm, width: 3.5 mm, height: 33.5 mm, number of positions: 1, color: red

---

## Test plugs

Test plugs - PS-3,5/E - 3031012

<https://www.phoenixcontact.com/de/produkte/3031012>



Test plugs, Individual test plug, color: red



# Ground modular terminal block - PTS 1,5/S/1P-PE

3214479

<https://www.phoenixcontact.com/de/produkte/3214479>

## Plug

Plug - PP-H 1,5/S/1 - 3212484

<https://www.phoenixcontact.com/de/produkte/3212484>



Plug, nom. voltage: 500 V, nominal current: 17.5 A, connection method: Push-in connection, 1 level, Rated cross section: 1.5 mm<sup>2</sup>, cross section: 0.14 mm<sup>2</sup> - 1.5 mm<sup>2</sup>, mounting type: Plug-in mounting, color: gray

---

## Plug

Plug - PP-H 1,5/S/1 BU - 3212497

<https://www.phoenixcontact.com/de/produkte/3212497>



Plug, nom. voltage: 500 V, nominal current: 17.5 A, connection method: Push-in connection, 1 level, Rated cross section: 1.5 mm<sup>2</sup>, cross section: 0.14 mm<sup>2</sup> - 1.5 mm<sup>2</sup>, color: blue

# Ground modular terminal block - PTS 1,5/S/1P-PE

3214479

<https://www.phoenixcontact.com/de/produkte/3214479>

## Plug

Plug - PP-H 1,5/S/1 GNYE - 3212507

<https://www.phoenixcontact.com/de/produkte/3212507>



Plug, nom. voltage: 500 V, nominal current: 17.5 A, connection method: Push-in connection, 1 level, Rated cross section: 1.5 mm<sup>2</sup>, cross section: 0.14 mm<sup>2</sup> - 1.5 mm<sup>2</sup>, color: green-yellow

---

## Plug

Plug - PP-H 1,5/S/2 - 3212510

<https://www.phoenixcontact.com/de/produkte/3212510>



Plug, nom. voltage: 500 V, nominal current: 17.5 A, connection method: Push-in connection, 1 level, Rated cross section: 1.5 mm<sup>2</sup>, cross section: 0.14 mm<sup>2</sup> - 1.5 mm<sup>2</sup>, mounting type: Plug-in mounting, color: gray

# Ground modular terminal block - PTS 1,5/S/1P-PE

3214479

<https://www.phoenixcontact.com/de/produkte/3214479>

## Plug

Plug - PP-H 1,5/S/3 - 3212523

<https://www.phoenixcontact.com/de/produkte/3212523>



Plug, nom. voltage: 500 V, nominal current: 17.5 A, connection method: Push-in connection, 1 level, Rated cross section: 1.5 mm<sup>2</sup>, cross section: 0.14 mm<sup>2</sup> - 1.5 mm<sup>2</sup>, mounting type: Plug-in mounting, color: gray

---

## Plug

Plug - PP-H 1,5/S/4 - 3212536

<https://www.phoenixcontact.com/de/produkte/3212536>



Plug, nom. voltage: 500 V, nominal current: 17.5 A, connection method: Push-in connection, 1 level, Rated cross section: 1.5 mm<sup>2</sup>, cross section: 0.14 mm<sup>2</sup> - 1.5 mm<sup>2</sup>, mounting type: Plug-in mounting, color: gray

# Ground modular terminal block - PTS 1,5/S/1P-PE

3214479

<https://www.phoenixcontact.com/de/produkte/3214479>

## Plug

Plug - PP-H 1,5/S/5 - 3212549

<https://www.phoenixcontact.com/de/produkte/3212549>



Plug, nom. voltage: 500 V, nominal current: 17.5 A, connection method: Push-in connection, 1 level, Rated cross section: 1.5 mm<sup>2</sup>, cross section: 0.14 mm<sup>2</sup> - 1.5 mm<sup>2</sup>, mounting type: Plug-in mounting, color: gray

---

## Plug

Plug - PP-H 1,5/S/6 - 3212552

<https://www.phoenixcontact.com/de/produkte/3212552>



Plug, nom. voltage: 500 V, nominal current: 17.5 A, connection method: Push-in connection, 1 level, Rated cross section: 1.5 mm<sup>2</sup>, cross section: 0.14 mm<sup>2</sup> - 1.5 mm<sup>2</sup>, mounting type: Plug-in mounting, color: gray

# Ground modular terminal block - PTS 1,5/S/1P-PE

3214479

<https://www.phoenixcontact.com/de/produkte/3214479>

## Plug

Plug - PP-H 1,5/S/7 - 3212565

<https://www.phoenixcontact.com/de/produkte/3212565>



Plug, nom. voltage: 500 V, nominal current: 17.5 A, connection method: Push-in connection, 1 level, Rated cross section: 1.5 mm<sup>2</sup>, cross section: 0.14 mm<sup>2</sup> - 1.5 mm<sup>2</sup>, color: gray

---

## Plug

Plug - PP-H 1,5/S/8 - 3212578

<https://www.phoenixcontact.com/de/produkte/3212578>



Plug, nom. voltage: 500 V, nominal current: 17.5 A, connection method: Push-in connection, 1 level, Rated cross section: 1.5 mm<sup>2</sup>, cross section: 0.14 mm<sup>2</sup> - 1.5 mm<sup>2</sup>, mounting type: Plug-in mounting, color: gray

# Ground modular terminal block - PTS 1,5/S/1P-PE

3214479

<https://www.phoenixcontact.com/de/produkte/3214479>

## Plug

Plug - PP-H 1,5/S/9 - 3212581

<https://www.phoenixcontact.com/de/produkte/3212581>



Plug, nom. voltage: 500 V, nominal current: 17.5 A, connection method: Push-in connection, 1 level, Rated cross section: 1.5 mm<sup>2</sup>, cross section: 0.14 mm<sup>2</sup> - 1.5 mm<sup>2</sup>, color: gray

---

## Plug

Plug - PP-H 1,5/S/10 - 3212594

<https://www.phoenixcontact.com/de/produkte/3212594>



Plug, nom. voltage: 500 V, nominal current: 17.5 A, connection method: Push-in connection, 1 level, Rated cross section: 1.5 mm<sup>2</sup>, cross section: 0.14 mm<sup>2</sup> - 1.5 mm<sup>2</sup>, color: gray

# Ground modular terminal block - PTS 1,5/S/1P-PE

3214479

<https://www.phoenixcontact.com/de/produkte/3214479>

## Plug

Plug - PP-H 1,5/S/11 - 3212604

<https://www.phoenixcontact.com/de/produkte/3212604>



Plug, nom. voltage: 500 V, nominal current: 17.5 A, connection method: Push-in connection, 1 level, Rated cross section: 1.5 mm<sup>2</sup>, cross section: 0.14 mm<sup>2</sup> - 1.5 mm<sup>2</sup>, color: gray

---

## Plug

Plug - PP-H 1,5/S/12 - 3212617

<https://www.phoenixcontact.com/de/produkte/3212617>



Plug, nom. voltage: 500 V, nominal current: 17.5 A, connection method: Push-in connection, 1 level, Rated cross section: 1.5 mm<sup>2</sup>, cross section: 0.14 mm<sup>2</sup> - 1.5 mm<sup>2</sup>, color: gray

# Ground modular terminal block - PTS 1,5/S/1P-PE

3214479

<https://www.phoenixcontact.com/de/produkte/3214479>

## Plug

Plug - PP-H 1,5/S/13 - 3212620

<https://www.phoenixcontact.com/de/produkte/3212620>



Plug, nom. voltage: 500 V, nominal current: 17.5 A, connection method: Push-in connection, 1 level, Rated cross section: 1.5 mm<sup>2</sup>, cross section: 0.14 mm<sup>2</sup> - 1.5 mm<sup>2</sup>, color: gray

---

## Plug

Plug - PP-H 1,5/S/14 - 3212633

<https://www.phoenixcontact.com/de/produkte/3212633>



Plug, nom. voltage: 500 V, nominal current: 17.5 A, connection method: Push-in connection, 1 level, Rated cross section: 1.5 mm<sup>2</sup>, cross section: 0.14 mm<sup>2</sup> - 1.5 mm<sup>2</sup>, color: gray



# Ground modular terminal block - PTS 1,5/S/1P-PE

3214479

<https://www.phoenixcontact.com/de/produkte/3214479>

## Plug

Plug - PP-H 1,5/S/15 - 3212646

<https://www.phoenixcontact.com/de/produkte/3212646>



Plug, nom. voltage: 500 V, nominal current: 17.5 A, connection method: Push-in connection, 1 level, Rated cross section: 1.5 mm<sup>2</sup>, cross section: 0.14 mm<sup>2</sup> - 1.5 mm<sup>2</sup>, color: gray

---

## Plug

Plug - PP-H 1,5/S/1-L - 3212659

<https://www.phoenixcontact.com/de/produkte/3212659>



Plug, nom. voltage: 500 V, nominal current: 17.5 A, connection method: Push-in connection, 1 level, Rated cross section: 1.5 mm<sup>2</sup>, cross section: 0.14 mm<sup>2</sup> - 1.5 mm<sup>2</sup>, color: gray

# Ground modular terminal block - PTS 1,5/S/1P-PE

3214479

<https://www.phoenixcontact.com/de/produkte/3214479>

## Plug

Plug - PP-H 1,5/S/1-L BU - 3212662

<https://www.phoenixcontact.com/de/produkte/3212662>



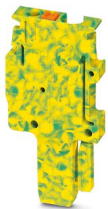
Plug, nom. voltage: 500 V, nominal current: 17.5 A, connection method: Push-in connection, 1 level, Rated cross section: 1.5 mm<sup>2</sup>, cross section: 0.14 mm<sup>2</sup> - 1.5 mm<sup>2</sup>, color: blue

---

## Plug

Plug - PP-H 1,5/S/1-L GNYE - 3212675

<https://www.phoenixcontact.com/de/produkte/3212675>



Plug, nom. voltage: 500 V, nominal current: 17.5 A, connection method: Push-in connection, 1 level, Rated cross section: 1.5 mm<sup>2</sup>, cross section: 0.14 mm<sup>2</sup> - 1.5 mm<sup>2</sup>, color: green-yellow

# Ground modular terminal block - PTS 1,5/S/1P-PE

3214479

<https://www.phoenixcontact.com/de/produkte/3214479>

## Plug

Plug - PP-H 1,5/S/1-M - 3212688

<https://www.phoenixcontact.com/de/produkte/3212688>



Plug, nom. voltage: 500 V, nominal current: 17.5 A, connection method: Push-in connection, 1 level, Rated cross section: 1.5 mm<sup>2</sup>, cross section: 0.14 mm<sup>2</sup> - 1.5 mm<sup>2</sup>, color: gray

---

## Plug

Plug - PP-H 1,5/S/1-M BU - 3212691

<https://www.phoenixcontact.com/de/produkte/3212691>



Plug, nom. voltage: 500 V, nominal current: 17.5 A, connection method: Push-in connection, 1 level, Rated cross section: 1.5 mm<sup>2</sup>, cross section: 0.14 mm<sup>2</sup> - 1.5 mm<sup>2</sup>, color: blue

# Ground modular terminal block - PTS 1,5/S/1P-PE

3214479

<https://www.phoenixcontact.com/de/produkte/3214479>

## Plug

Plug - PP-H 1,5/S/1-M GNYE - 3212701

<https://www.phoenixcontact.com/de/produkte/3212701>



Plug, nom. voltage: 500 V, nominal current: 17.5 A, connection method: Push-in connection, 1 level, Rated cross section: 1.5 mm<sup>2</sup>, cross section: 0.14 mm<sup>2</sup> - 1.5 mm<sup>2</sup>, color: green-yellow

---

## Plug

Plug - PP-H 1,5/S/1-R - 3212714

<https://www.phoenixcontact.com/de/produkte/3212714>



Plug, nom. voltage: 500 V, nominal current: 17.5 A, connection method: Push-in connection, 1 level, Rated cross section: 1.5 mm<sup>2</sup>, cross section: 0.14 mm<sup>2</sup> - 1.5 mm<sup>2</sup>, color: gray

# Ground modular terminal block - PTS 1,5/S/1P-PE

3214479

<https://www.phoenixcontact.com/de/produkte/3214479>

## Plug

Plug - PP-H 1,5/S/1-R BU - 3212727

<https://www.phoenixcontact.com/de/produkte/3212727>



Plug, nom. voltage: 500 V, nominal current: 17.5 A, connection method: Push-in connection, 1 level, Rated cross section: 1.5 mm<sup>2</sup>, cross section: 0.14 mm<sup>2</sup> - 1.5 mm<sup>2</sup>, color: blue

---

## Plug

Plug - PP-H 1,5/S/1-R GNYE - 3212730

<https://www.phoenixcontact.com/de/produkte/3212730>



Plug, nom. voltage: 500 V, nominal current: 17.5 A, connection method: Push-in connection, 1 level, Rated cross section: 1.5 mm<sup>2</sup>, cross section: 0.14 mm<sup>2</sup> - 1.5 mm<sup>2</sup>, color: green-yellow

# Ground modular terminal block - PTS 1,5/S/1P-PE



3214479

<https://www.phoenixcontact.com/de/produkte/3214479>

## Strain relief

Strain relief - PZ 1,5/S/2 - 3212918

<https://www.phoenixcontact.com/de/produkte/3212918>



Strain relief, length: 44.5 mm, width: 6.8 mm, number of positions: 2, color: black

---

## Latching

Latching - PRZ 1,5/S - 3212905

<https://www.phoenixcontact.com/de/produkte/3212905>



Latching, color: orange

# Ground modular terminal block - PTS 1,5/S/1P-PE



3214479

<https://www.phoenixcontact.com/de/produkte/3214479>

## Latching

Latching - PR 1,5/S/2 - 3212895

<https://www.phoenixcontact.com/de/produkte/3212895>



Latching, length: 28.9 mm, width: 6.8 mm, number of positions: 2, color: orange

---

## Latching

Latching - PR 1,5/S - 3212882

<https://www.phoenixcontact.com/de/produkte/3212882>



Latching, length: 28.9 mm, width: 3.3 mm, number of positions: 1, color: orange

---

Phoenix Contact 2022 © - all rights reserved  
<https://www.phoenixcontact.com>

PHOENIX CONTACT Deutschland GmbH  
Flachsmarktstraße 8  
D-32825 Blomberg  
+49 52 35/3-1 20 00  
[info@phoenixcontact.de](mailto:info@phoenixcontact.de)