

# Miniature solid-state relay - OPT-24DC/ 48DC/100

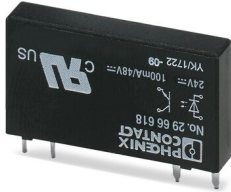


2966618

<https://www.phoenixcontact.com/de/produkte/2966618>

Please be informed that the data shown in this PDF document is generated from our Online Catalog. Please find the complete data in the user documentation. Our General Terms of Use for Downloads are valid.

Plug-in miniature solid-state relay, input solid-state relay, 1 N/O contact, input: 24 V DC, output: 3 - 48 V DC/100 mA



## Your advantages

- Vibration and shock resistant
- RT III-proof (wash-proof)
- Wear-free and durable
- Zero voltage switch at AC output
- Can be soldered on PCB
- Switching power of up to 24 V DC/5 A

# Miniature solid-state relay - OPT-24DC/ 48DC/100



2966618

<https://www.phoenixcontact.com/de/produkte/2966618>

## Commercial Data

Item number	2966618
Packing unit	10 pc
Minimum order quantity	10 pc
Sales Key	G1 - Relais
Product Key	CK61F2
Catalog Page	Page 287 (C-5-2019)
GTIN	4017918130466
Weight per Piece (including packing)	4,83 g
Weight per Piece (excluding packing)	4,83 g
Customs tariff number	85364110
Country of origin	HU

# Miniature solid-state relay - OPT-24DC/ 48DC/100



2966618

<https://www.phoenixcontact.com/de/produkte/2966618>

## Technical Data

### Product properties

Product type	Single solid-state relay
Set comprises	2905294 RIF-0-OPT-24DC/48DC/100
	2905658 RIF-0-OSC-24DC/48DC/100
Operating mode	100% operating factor

### Insulation characteristics

Overvoltage category	III
Pollution degree	2
Insulation	Basic insulation

### Electrical properties

Maximum power dissipation for nominal condition	0.17 W
Test voltage Input/output	2.5 kV (50 Hz, 1 min., input/output)

### Input data

Nominal input voltage $U_N$	24 V DC
Input voltage range in reference to $U_N$	0.8 ... 1.2
Input voltage range	19.2 V DC ... 28.8 V DC
Switching threshold "0" signal, voltage	$\leq 10$ V
Switching threshold "1" signal voltage	$\geq 16$ V
Typical input current at $U_N$	7 mA
Typical response time	20 $\mu$ s (at $U_N$ )
Typical turn-off time	300 $\mu$ s (at $U_N$ )
Transmission frequency	300 Hz

### Output data

Contact type	1 N/O contact
Design of digital output	electronic
Output voltage range	3 V DC ... 48 V DC
Limiting continuous current	100 mA
Voltage drop at max. limiting continuous current	$\leq 1$ V
Output circuit	2-conductor, floating
Protective circuit	Reverse polarity protection
	Surge protection

### Dimensions

Width	5 mm
Height	28 mm
Depth	15 mm

### Environmental and real-life conditions

# Miniature solid-state relay - OPT-24DC/ 48DC/100



2966618

<https://www.phoenixcontact.com/de/produkte/2966618>

## Ambient conditions

Degree of protection	RT III
Ambient temperature (operation)	-25 °C ... 60 °C
Ambient temperature (storage/transport)	-25 °C ... 70 °C

## Approval data

### Corrosive gas test

Identification	ISA-S71.04. G3 Harsh Group
	EN 60068-2-60

## Standards and regulations

### Standards/regulations

Standards/regulations	IEC 60664
	EN 50178

## Mounting

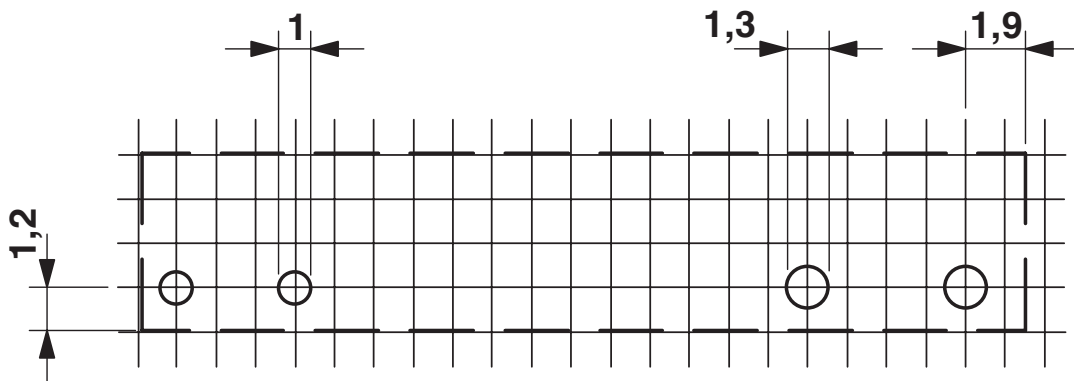
Assembly instructions	in rows with zero spacing
Mounting position	any

2966618

<https://www.phoenixcontact.com/de/produkte/2966618>

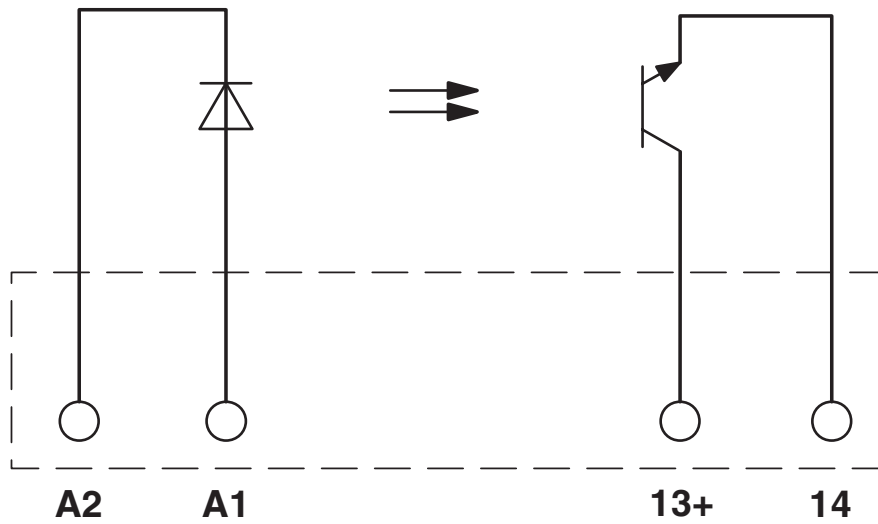
## Drawings

Drilling plan/solder pad geometry



a = pitch division 1.25 mm and 1.27 mm

Circuit diagram



# Miniature solid-state relay - OPT-24DC/ 48DC/100



2966618

<https://www.phoenixcontact.com/de/produkte/2966618>

## Approvals



**cUL Recognized**  
Approval ID: FILE E 195083



**UL Recognized**  
Approval ID: FILE E 195083



**EAC**  
Approval ID: TR\_TS\_D\_00573\_c



**UL Recognized**  
Approval ID: FILE E 195083



**EAC**  
Approval ID: RU\*C-DE.\*08.B.00010



**PRS**  
Approval ID: TE/2109/880590/16



**cUL Recognized**  
Approval ID: FILE E 195083



**GL**  
Approval ID: 46016-03 HH

Nominal Voltage  $U_N$

Nominal Current  $I_N$

Cross Section AWG

Cross Section  $\text{mm}^2$

-

-

# Miniature solid-state relay - OPT-24DC/ 48DC/100



2966618

<https://www.phoenixcontact.com/de/produkte/2966618>

## Classifications

### ECLASS

ECLASS-9.0	27371604
ECLASS-10.0.1	27371604
ECLASS-11.0	27371604

### ETIM

ETIM 8.0	EC001504
----------	----------

### UNSPSC

UNSPSC 21.0	39122300
-------------	----------

# Miniature solid-state relay - OPT-24DC/ 48DC/100



2966618

<https://www.phoenixcontact.com/de/produkte/2966618>

## Environmental Product Compliance

China RoHS	Environmentally friendly use period: unlimited = EFUP-e
	No hazardous substances above threshold values



# Miniature solid-state relay - OPT-24DC/ 48DC/100

2966618

<https://www.phoenixcontact.com/de/produkte/2966618>

## Accessories

### Relay base

Relay base - PLC-BPT- 24DC/21 - 2900445

<https://www.phoenixcontact.com/de/produkte/2900445>



6.2 mm PLC basic terminal block with Push-in connection, without relay or solid-state relay, for mounting on DIN rail NS 35/7,5, 1 changeover contact, input voltage 24 V DC

---

### Relay base

Relay base - PLC-BSC- 24DC/21 - 2966016

<https://www.phoenixcontact.com/de/produkte/2966016>



6.2 mm PLC basic terminal block with screw connection, without relay or solid-state relay, for mounting on DIN rail NS 35/7,5, 1 changeover contact, input voltage 24 V DC

# Miniature solid-state relay - OPT-24DC/ 48DC/100

2966618

<https://www.phoenixcontact.com/de/produkte/2966618>

## Relay base

Relay base - PLC-BPT- 48DC/21 - 2900447

<https://www.phoenixcontact.com/de/produkte/2900447>



6.2 mm PLC basic terminal block with Push-in connection, without relay or solid-state relay, for mounting on DIN rail NS 35/7,5, 1 changeover contact, input voltage 48 V DC

---

## Relay base

Relay base - PLC-BSC- 48DC/21 - 2966090

<https://www.phoenixcontact.com/de/produkte/2966090>



6.2 mm PLC basic terminal block with screw connection, without relay or solid-state relay, for mounting on DIN rail NS 35/7,5, 1 changeover contact, input voltage 48 V DC

# Miniature solid-state relay - OPT-24DC/ 48DC/100

2966618

<https://www.phoenixcontact.com/de/produkte/2966618>

## Relay base

Relay base - PLC-BPT- 24DC/ 1/SEN - 2900262

<https://www.phoenixcontact.com/de/produkte/2900262>



6.2 mm PLC basic terminal block for input functions with push-in connection, without relay or solid-state relay, for mounting on DIN rail NS 35/7,5, with sensor supply voltage distribution (BB), 1 N/O contact, input voltage 24 V DC

---

## Relay base

Relay base - PLC-BSC- 24DC/ 1/SEN - 2966061

<https://www.phoenixcontact.com/de/produkte/2966061>



6.2 mm PLC basic terminal block for input functions with screw connection, without relay or solid-state relay, for mounting on DIN rail NS 35/7,5, with sensor supply voltage distribution (BB), 1 N/O contact, input voltage 24 V DC

# Miniature solid-state relay - OPT-24DC/ 48DC/100

2966618

<https://www.phoenixcontact.com/de/produkte/2966618>

## Relay base

Relay base - PLC-BPT- 24DC/ 1/ACT - 2900449

<https://www.phoenixcontact.com/de/produkte/2900449>



6.2 mm PLC basic terminal block for output functions with push-in connection, without relay or solid-state relay, for mounting on DIN rail NS 35/7,5, with load return line connection (BB), 1 N/O contact, input voltage 24 V DC

---

## Relay base

Relay base - PLC-BSC- 24DC/ 1/ACT - 2966058

<https://www.phoenixcontact.com/de/produkte/2966058>



6.2 mm PLC basic terminal block for output functions with screw connection, without relay or solid-state relay, for mounting on DIN rail NS 35/7,5, with load return line connection (BB), 1 N/O contact, input voltage 24 V DC

# Miniature solid-state relay - OPT-24DC/ 48DC/100

2966618

<https://www.phoenixcontact.com/de/produkte/2966618>

## Relay base

Relay base - PLC-BPT- 24UC/ 1/ACT - 2900450

<https://www.phoenixcontact.com/de/produkte/2900450>



6.2 mm PLC basic terminal block for output functions with push-in connection, without relay or solid-state relay, for mounting on DIN rail NS 35/7,5, with load return line connection (BB), 1 N/O contact, input voltage 24 V AC/DC

---

## Relay base

Relay base - PLC-BSC- 24UC/ 1/ACT - 2982799

<https://www.phoenixcontact.com/de/produkte/2982799>



6.2 mm PLC basic terminal block for output functions with screw connection, without relay or solid-state relay, for mounting on DIN rail NS 35/7,5, with load return line connection (BB), 1 N/O contact, input voltage 24 V AC/DC

# Miniature solid-state relay - OPT-24DC/ 48DC/100

2966618

<https://www.phoenixcontact.com/de/produkte/2966618>

## Relay base

Relay base - PLC-BSC- 24DC/21/SO46 - 2980458

<https://www.phoenixcontact.com/de/produkte/2980458>



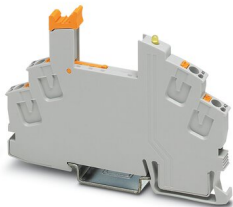
6.2 mm PLC basic terminal block with protection against interference currents/voltages on the control side, with screw connection, without relay or solid-state relay, for mounting on DIN rail NS 35/7,5, with increased input current consumption, 1 changeover contact, input voltage 24 V DC

---

## Relay base

Relay base - RIF-0-BPT/1 - 2901873

<https://www.phoenixcontact.com/de/produkte/2901873>



RIF-0... relay base, for miniature power relay with 1 N/O contact or solid-state relays of the same design, push-in connection, for mounting on NS 35/7,5

# Miniature solid-state relay - OPT-24DC/ 48DC/100



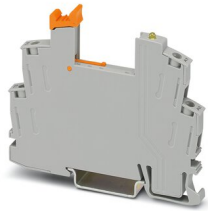
2966618

<https://www.phoenixcontact.com/de/produkte/2966618>

## Relay base

Relay base - RIF-0-BSC/ 1 - 2901872

<https://www.phoenixcontact.com/de/produkte/2901872>



RIF-0... relay base, for miniature power relay with 1 N/O contact or identical solid-state relays, screw connection, for mounting on NS 35/7,5

---

Phoenix Contact 2022 © - all rights reserved

<https://www.phoenixcontact.com>

PHOENIX CONTACT Deutschland GmbH

Flachsmarktstraße 8

D-32825 Blomberg

+49 52 35/3-1 20 00

[info@phoenixcontact.de](mailto:info@phoenixcontact.de)