

Socket - EO-G/UT/SH/LED



0804053

<https://www.phoenixcontact.com/de/produkte/0804053>

Please be informed that the data shown in this PDF document is generated from our Online Catalog. Please find the complete data in the user documentation. Our General Terms of Use for Downloads are valid.



Socket, Pin connector pattern type G, Screw connection, for Great Britain and other countries, with extended touch proofness/shutter, LED display, gray, for mounting on a DIN rail in the service interface or direct mounting, 250 V AC, 13 A, -20 °C, 60 °C, BS 1363-1/-2

Socket - EO-G/UT/SH/LED

0804053

<https://www.phoenixcontact.com/de/produkte/0804053>



Commercial Data

Item number	0804053
Packing unit	5 pc
Minimum order quantity	5 pc
Sales Key	B1 - Markierung Montage
Product Key	BE7617
Catalog Page	Page 565 (C-3-2019)
GTIN	4055626225920
Weight per Piece (including packing)	86,9 g
Weight per Piece (excluding packing)	86 g
Customs tariff number	85366990
Country of origin	PL

Socket - EO-G/UT/SH/LED



0804053

<https://www.phoenixcontact.com/de/produkte/0804053>

Technical Data

Product properties

Product type	Socket
Country ID	Great Britain

Electrical properties

Nominal voltage U_N	250 V AC (50 Hz)
Nominal current I_N	13 A

LED signaling

Status display	Yes
----------------	-----

Dimensions

Width	45 mm
Height	75 mm
Depth	57.5 mm

Material specifications

Color	gray
Flammability rating according to UL 94	V0
Insulating material	PA
Contact material	CuZn37
Static insulating material application in cold	-60 °C
Temperature index of insulation material (DIN EN 60216-1 (VDE 0304-21))	130 °C
Relative insulation material temperature index (Elec., UL 746 B)	130 °C
Fire protection for rail vehicles (DIN EN 45545-2) R22	HL 1 - HL 3
Fire protection for rail vehicles (DIN EN 45545-2) R23	HL 1 - HL 3
Fire protection for rail vehicles (DIN EN 45545-2) R24	HL 1 - HL 3
Fire protection for rail vehicles (DIN EN 45545-2) R26	HL 1 - HL 3
Calorimetric heat release NFPA 130 (ASTM E 1354)	28 MJ/kg
Surface flammability NFPA 130 (ASTM E 162)	passed
Specific optical density of smoke NFPA 130 (ASTM E 662)	passed
Smoke gas toxicity NFPA 130 (SMP 800C)	passed

Connector

Type of plug	Pin connector pattern type G
--------------	------------------------------

Environmental and real-life conditions

Ambient conditions

Degree of protection	IP20
Ambient temperature (operation)	-20 °C ... 60 °C (max. short-term operating temperature RTI Elec.)

Socket - EO-G/UT/SH/LED



0804053

<https://www.phoenixcontact.com/de/produkte/0804053>

Ambient temperature (storage/transport)	-25 °C ... 60 °C (for a short time, not exceeding 24 h, -60 °C to +70 °C)
Permissible humidity (storage/transport)	30 % ... 70 %

Standards and regulations

Standards

Standards/regulations	BS 1363-1/-2
-----------------------	--------------

Mounting

Mounting type	for mounting on a DIN rail in the service interface or direct mounting
---------------	--

Socket - EO-G/UT/SH/LED

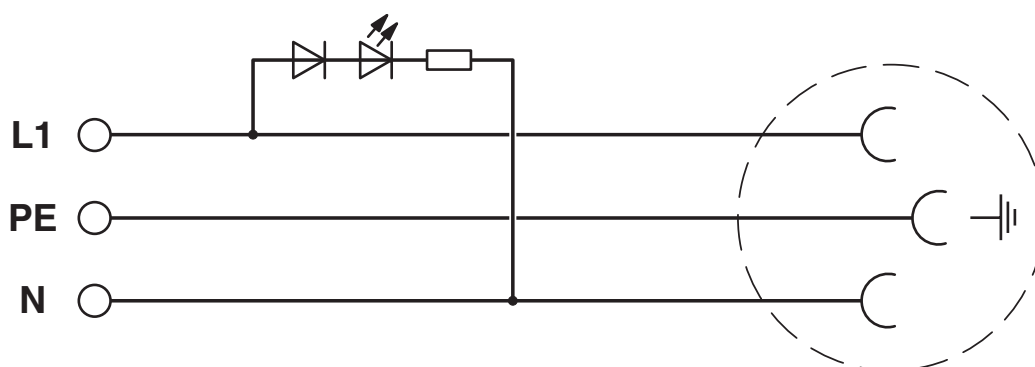
0804053

<https://www.phoenixcontact.com/de/produkte/0804053>



Drawings

Circuit diagram



Socket - EO-G/UT/SH/LED



0804053

<https://www.phoenixcontact.com/de/produkte/0804053>

Approvals



EAC

Approval ID: RU C-DE.BL08.B.00511



EAC

Approval ID: RU D-DE.HB49.B.00025

Socket - EO-G/UT/SH/LED



0804053

<https://www.phoenixcontact.com/de/produkte/0804053>

Classifications

ECLASS

ECLASS-9.0	27142305
ECLASS-10.0.1	27142305
ECLASS-11.0	27142305

ETIM

ETIM 8.0	EC001663
----------	----------

UNSPSC

UNSPSC 21.0	39121400
-------------	----------

Socket - EO-G/UT/SH/LED

0804053

<https://www.phoenixcontact.com/de/produkte/0804053>



Environmental Product Compliance

REACH SVHC	Lead 7439-92-1
	Hexahydromethylphthalic anhydride
China RoHS	Environmentally Friendly Use Period = 50 years
	For information on hazardous substances, refer to the manufacturer's declaration available under "Downloads"

0804053

<https://www.phoenixcontact.com/de/produkte/0804053>

Accessories

Marker for terminal blocks

Marker for terminal blocks - UC-TMF 8 - 0818137

<https://www.phoenixcontact.com/de/produkte/0818137>



Marker for terminal blocks, Sheet, white, unlabeled, can be labeled with: BLUEMARK ID COLOR, BLUEMARK ID, BLUEMARK CLED, PLOTMARK, CMS-P1-PLOTTER, mounting type: snapped, for terminal block width: 8.2 mm, lettering field size: 7.6 x 5.1 mm, Number of individual labels: 56

Marker for terminal blocks

Marker for terminal blocks - UC-TMF 16 - 0819262

<https://www.phoenixcontact.com/de/produkte/0819262>



Marker for terminal blocks, Sheet, white, unlabeled, can be labeled with: BLUEMARK ID COLOR, BLUEMARK ID, BLUEMARK CLED, PLOTMARK, CMS-P1-PLOTTER, mounting type: snapped, for terminal block width: 16 mm, lettering field size: 15.45 x 5.1 mm, Number of individual labels: 32

Socket - EO-G/UT/SH/LED

0804053

<https://www.phoenixcontact.com/de/produkte/0804053>



Zack Marker strip, flat

Zack Marker strip, flat - ZBF 8:UNBEDRUCKT - 0808781

<https://www.phoenixcontact.com/de/produkte/0808781>



Zack Marker strip, flat, Strip, white, unlabeled, can be labeled with: PLOTMARK, CMS-P1-PLOTTER, mounting type: snapped, for terminal block width: 8 mm, lettering field size: 5.15 x 8.15 mm, Number of individual labels: 10

Zack Marker strip, flat

Zack Marker strip, flat - ZBF 16:UNPRINTED - 0827464

<https://www.phoenixcontact.com/de/produkte/0827464>



Zack Marker strip, flat, Strip, white, unlabeled, can be labeled with: PLOTMARK, CMS-P1-PLOTTER, mounting type: snapped, for terminal block width: 16 mm, lettering field size: 16.25 x 10.5 mm, Number of individual labels: 50

Socket - EO-G/UT/SH/LED

0804053

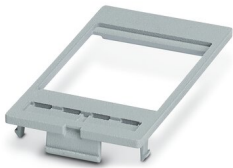
<https://www.phoenixcontact.com/de/produkte/0804053>



Adapter plate

Adapter plate - EO-SI-FRAME - 0804522

<https://www.phoenixcontact.com/de/produkte/0804522>



Adapter plate for installing the control cabinet sockets (type EO-...) in the mounting frames (type VS-SI-EB-EMV.../ SI-M1A.../ SI-M1B...). Includes fastening hardware for the control cabinet socket

Phoenix Contact 2022 © - all rights reserved

<https://www.phoenixcontact.com>

PHOENIX CONTACT Deutschland GmbH

Flachsmarktstraße 8

D-32825 Blomberg

+49 52 35/3-1 20 00

info@phoenixcontact.de