

DIN rail bus connectors - ME 17,5 TBUS 1,5/ 5-ST-3,81 GN

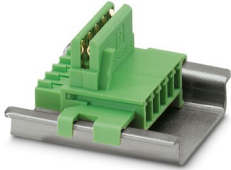


2709561

<https://www.phoenixcontact.com/de/produkte/2709561>

Please be informed that the data shown in this PDF document is generated from our Online Catalog. Please find the complete data in the user documentation. Our General Terms of Use for Downloads are valid.

DIN rail connector for DIN rail mounting. Universal for TBUS housing. Gold-plated contacts, 5-pos.



Your advantages

- Space-saving installation under the housing in the DIN rail
- Contact design enables electronics modules to be easily snapped on
- Power supply and communication without additional wiring
- Parallel and serial contacts for efficient signal and data transmission

DIN rail bus connectors - ME 17,5 TBUS 1,5/ 5-ST-3,81 GN



2709561

<https://www.phoenixcontact.com/de/produkte/2709561>

Commercial Data

Item number	2709561
Packing unit	10 pc
Minimum order quantity	1 pc
Sales Key	F1 - Elektronikgehäuse
Product Key	ACHACA
Catalog Page	Page 234 (C-4-2017)
GTIN	4017918892654
Weight per Piece (including packing)	5,58 g
Weight per Piece (excluding packing)	5,1 g
Customs tariff number	85366990
Country of origin	DE

DIN rail bus connectors - ME 17,5 TBUS 1,5/ 5-ST-3,81 GN



2709561

<https://www.phoenixcontact.com/de/produkte/2709561>

Technical Data

Notes

Recommendation	Material of contact pads for bus connector, galvanic gold (hard gold)
----------------	---

Product properties

Product type	DIN rail connector
Number of positions	5
Pitch	3.81 mm

Electrical properties

Nominal current I_N	8 A (parallel contacts)
Nominal voltage U_N	125 V
Pollution degree	3
Contact resistance	4.4 mΩ
Rated surge voltage (III/3)	2.5 kV
Rated voltage (III/2)	125 V
Rated surge voltage (III/2)	2.5 kV

Connection data

Maximum load current	8 A
----------------------	-----

Dimensions

Pitch	3.81 mm
Width [w]	24.2 mm
Height [h]	36.3 mm
Length [l]	20.45 mm

Material specifications

Material data - contact

Contact material	Cu alloy
Surface characteristics	Completely gold-plated

Material data - housing

Housing color	green (6021)
Insulating material	PA
Insulating material group	I
CTI according to IEC 60112	600
Flammability rating according to UL 94	V0

Connector

Header 1

Insulating material	PA
---------------------	----

DIN rail bus connectors - ME 17,5 TBUS 1,5/ 5-ST-3,81 GN



2709561

<https://www.phoenixcontact.com/de/produkte/2709561>

CTI according to IEC 60112	600
----------------------------	-----

Electrical tests

Thermal test | Test group C

Specification	IEC 60512-5-1:2002-02
Tested number of positions	5

Air clearances and creepage distances |

Specification	IEC 60664-1:2007-04
Insulating material group	I
Rated surge voltage (III/3)	2.5 kV
minimum clearance value - non-homogenous field (III/3)	1.5 mm
minimum creepage distance (III/3)	1.9 mm
Rated insulation voltage (III/2)	125 V
Rated surge voltage (III/2)	2.5 kV
minimum clearance value - non-homogenous field (III/2)	1.5 mm
minimum creepage distance (III/2)	0.75 mm
Rated insulation voltage (II/2)	320 V
Rated surge voltage (II/2)	2.5 kV
minimum clearance value - non-homogenous field (II/2)	1.5 mm
minimum creepage distance (II/2)	1.6 mm

Mechanical tests

Insertion and withdrawal forces

Result	Test passed
No. of cycles	25
Insertion strength per pos. approx.	6 N
Withdraw strength per pos. approx.	5 N

Contact holder in insert

Specification	IEC 60512-15-1:2008-05
Contact holder in insert Requirements >20 N	Test passed

Polarization and coding

Specification	IEC 60512-13-5:2006-02
Result	Test passed

Visual inspection

Specification	IEC 60512-1-1:2002-02
Result	Test passed

Dimension check

Specification	IEC 60512-1-2:2002-02
Result	Test passed

DIN rail bus connectors - ME 17,5 TBUS 1,5/ 5-ST-3,81 GN



2709561

<https://www.phoenixcontact.com/de/produkte/2709561>

Environmental and real-life conditions

Vibration test

Specification	IEC 60068-2-6:2007-12
Frequency	10 - 150 - 10 Hz
Sweep speed	1 octave/min
Amplitude	0.35 mm (10 - 60.1 Hz)
Sweep speed	5g (60,1 - 500 Hz)
Test duration per axis	2.5 h

Durability test

Specification	IEC 60512-9-1:2010-03
Impulse withstand voltage at sea level	2.95 kV
Contact resistance R_1	4.4 m Ω
Contact resistance R_2	4.5 m Ω
Insertion/withdrawal cycles	25

Climatic test

Specification	ISO 6988:1985-02
Corrosive stress	0.2 dm ³ SO ₂ on 300 dm ³ /40 °C/1 cycle
Thermal stress	100 °C/168 h
Power-frequency withstand voltage	1.39 kV

Glow-wire test

Specification	IEC 60695-2-10:2013-04
Temperature	850 °C
Time of exposure	30 s

Shocks

Specification	IEC 60068-2-27:2008-02
Pulse shape	Semi-sinusoidal
Acceleration	15g
Shock duration	11 ms
Test directions	X-, Y- and Z-axis (pos. and neg.)

Ambient conditions

Ambient temperature (operation)	-40 °C ... 105 °C (dependent on the derating curve)
Ambient temperature (storage/transport)	-40 °C ... 55 °C
Relative humidity (storage/transport)	30 % ... 70 %
Ambient temperature (assembly)	-5 °C ... 100 °C

Mounting

Mounting type	DIN rail mounting
---------------	-------------------

Packaging specifications

Type of packaging	packed in cardboard
-------------------	---------------------

DIN rail bus connectors - ME 17,5 TBUS 1,5/ 5-ST-3,81 GN



2709561

<https://www.phoenixcontact.com/de/produkte/2709561>

Outer packaging type	Carton
----------------------	--------


DIN rail bus connectors - ME 17,5 TBUS 1,5/ 5-ST-3,81 GN




2709561

<https://www.phoenixcontact.com/de/produkte/2709561>

Approvals

 cUL Recognized Approval ID: E118976-20151204				
	Nominal Voltage U_N	Nominal Current I_N	Cross Section AWG	Cross Section mm^2
	150 V	6 A	-	-

 UL Recognized Approval ID: E118976-20151204				
	Nominal Voltage U_N	Nominal Current I_N	Cross Section AWG	Cross Section mm^2
	150 V	8 A	-	-

cULus Recognized				
-------------------------	--	--	--	--

DIN rail bus connectors - ME 17,5 TBUS 1,5/ 5-ST-3,81 GN



2709561

<https://www.phoenixcontact.com/de/produkte/2709561>

Classifications

ECLASS

ECLASS-9.0	27440402
ECLASS-10.0.1	27440402
ECLASS-11.0	27460201

ETIM

ETIM 8.0	EC002637
----------	----------

UNSPSC

UNSPSC 21.0	39121400
-------------	----------

DIN rail bus connectors - ME 17,5 TBUS 1,5/ 5-ST-3,81 GN



2709561

<https://www.phoenixcontact.com/de/produkte/2709561>

Environmental Product Compliance

China RoHS	Environmentally friendly use period: unlimited = EFUP-e
	No hazardous substances above threshold values

Phoenix Contact 2022 © - all rights reserved
<https://www.phoenixcontact.com>

PHOENIX CONTACT Deutschland GmbH
Flachmarktstraße 8
D-32825 Blomberg
+49 52 35/3-1 20 00
info@phoenixcontact.de