

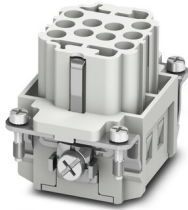
Contact insert - HC-BB10-I-CT-F

1584703

<https://www.phoenixcontact.com/pc/products/1584703>



Please be informed that the data shown in this PDF document is generated from our Online Catalog. Please find the complete data in the user documentation. Our General Terms of Use for Downloads are valid.



HEAVYCON socket insert, series: BB10, 10-pos., crimp connection, with plastic coding profile, can be coded

Your advantages

- For fast coding with plastic profile (Order No. 1410916, type CP-HC-S)

Contact insert - HC-BB10-I-CT-F

1584703

<https://www.phoenixcontact.com/pc/products/1584703>



Commercial Data

| | |
|--------------------------------------|---------------------|
| Item number | 1584703 |
| Packing unit | 1 pc |
| Minimum order quantity | 1 pc |
| Product Key | BF7ABD |
| Catalog Page | Page 555 (C-2-2019) |
| GTIN | 4046356149228 |
| Weight per Piece (including packing) | 44 g |
| Weight per Piece (excluding packing) | 44 g |
| Customs tariff number | 85366990 |
| Country of origin | CN |

Contact insert - HC-BB10-I-CT-F

1584703

<https://www.phoenixcontact.com/pc/products/1584703>

Technical Data

Notes

| | |
|---------|--|
| General | For HC-B6 housing, crimp contacts CK 2,5-ED (crimp contacts not included in scope of supply) |
| General | Connectors may be operated only when there is no load/voltage. |

Product properties

| | |
|------------------------------------|--|
| Type | B6 |
| Product type | Contact insert with a fixed no. of positions |
| Number of positions | 10 |
| Connection profile | 10+PE |
| Number of connections per position | 1 |
| Contact type | turned |
| Series | HC-BB |

Insulation characteristics

| | |
|----------------------|-----|
| Overvoltage category | III |
| Degree of pollution | 3 |

Connection data

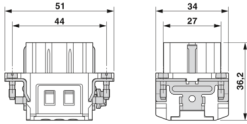
Connection technology

| | |
|------------------------------------|------------------|
| Connection technology | Crimp connection |
| Number of connections per position | 1 |
| Connection in acc. with standard | IEC / EN |

Conductor connection

| | |
|---|-----------|
| Connection cross section AWG | 20 ... 12 |
| Stripping length of the individual wire | 7.5 mm |

Dimensions

| | |
|---------------------------------|--|
| Dimensional drawing |  |
| Width | 34 mm |
| Height | 32.5 mm |
| Length | 51 mm |
| Drill hole distance, horizontal | 44 mm |
| Drill hole distance, vertical | 27 mm |

Mechanical characteristics

| | |
|------------------------|--------|
| Minimum housing height | 72 mm |
| Contact diameter | 2.5 mm |

Contact insert - HC-BB10-I-CT-F



1584703

<https://www.phoenixcontact.com/pc/products/1584703>

Electrical properties

| | |
|-----------------------|-------|
| Rated voltage (III/3) | 500 V |
| Rated surge voltage | 6 kV |
| Rated current | 16 A |

Material specifications

| | |
|--|---|
| Color | gray |
| Flammability rating according to UL 94 | V0 |
| Contact material | Copper alloy |
| Contact surface material | Ag (alternatively Au) |
| Contact carrier material | PC |
| Standards/regulations | PC: Fire protection in rail vehicles - requirement sets R22, R23, and R24 acc. to DIN EN 45545-2 (Risk level HL1 - HL3) |

Connector

| | |
|-----------------------------|-----------------------|
| Insertion/withdrawal cycles | ≥ 500 |
| Contact type | Socket |
| Number of positions | 10 |
| Connection profile | 10+PE |
| Insertion/withdrawal cycles | ≥ 500 |
| Contact material | Copper alloy |
| Contact surface material | Ag (alternatively Au) |
| Contact type | Socket |
| Number of positions | 10 |
| Connection profile | 10+PE |
| Insertion/withdrawal cycles | ≥ 500 |
| Contact material | Copper alloy |
| Contact surface material | Ag (alternatively Au) |

Cable / line

Cable structure

| | |
|---|--------|
| Stripping length of the individual wire | 7.5 mm |
|---|--------|

Mounting

| | |
|-----------------------|---|
| Assembly instructions | To ensure correct use, installation in housing with IP54 protection or better is required |
|-----------------------|---|

Ambient conditions

| | |
|---------------------------------|--|
| Ambient temperature (operation) | -40 °C ... 125 °C (including heating up of contacts) |
|---------------------------------|--|

Standards and regulations

Testing

| | |
|-----------------------|---|
| Standards/regulations | PC: Fire protection in rail vehicles - requirement sets R22, R23, and R24 acc. to DIN EN 45545-2 (Risk level HL1 - HL3) |
|-----------------------|---|

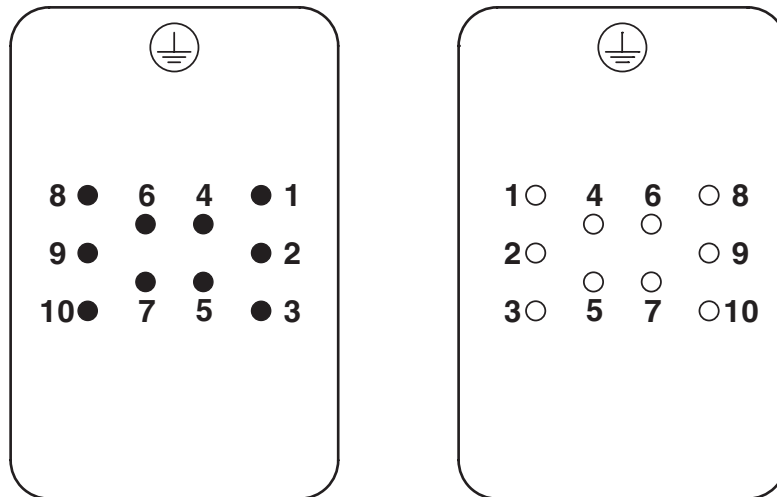
Contact insert - HC-BB10-I-CT-F

1584703

<https://www.phoenixcontact.com/pc/products/1584703>

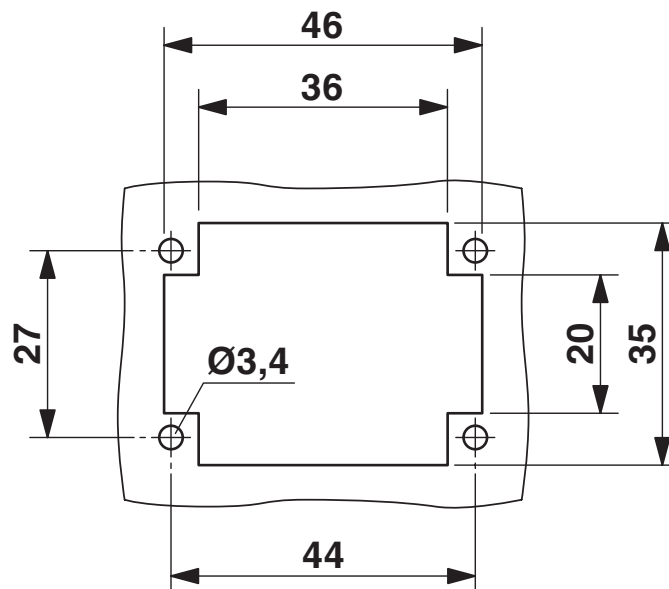
Drawings

Schematic diagram



Connector pin assignment: Left pin - right socket

Dimensional drawing

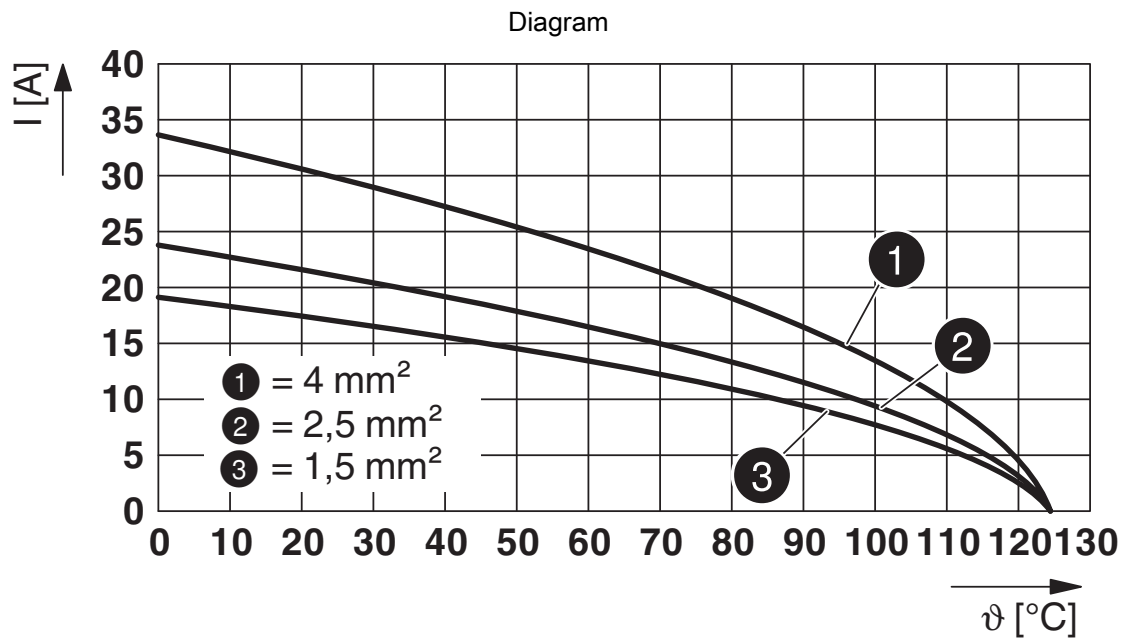


Mounting cutout when used without housing

Contact insert - HC-BB10-I-CT-F

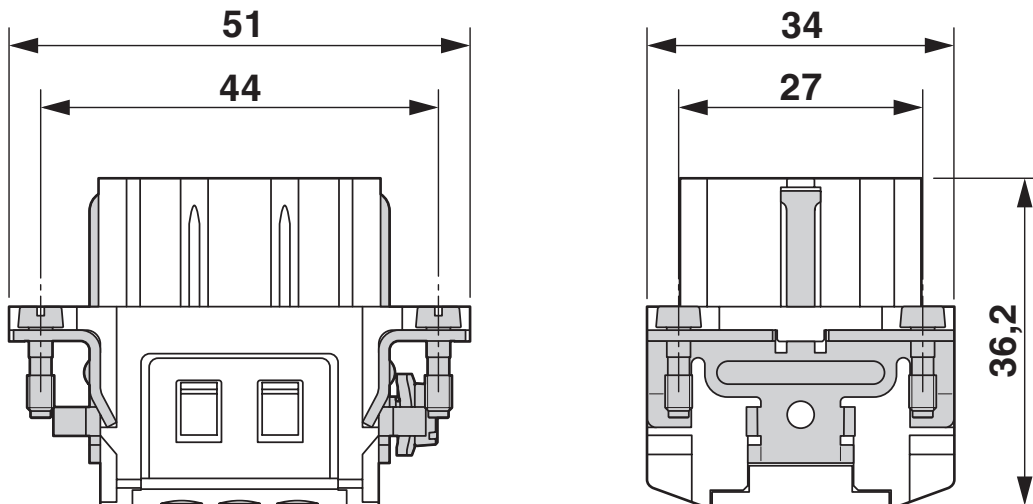
1584703

<https://www.phoenixcontact.com/pc/products/1584703>



Derating diagram

Dimensional drawing



Female insert

Contact insert - HC-BB10-I-CT-F



1584703

<https://www.phoenixcontact.com/pc/products/1584703>

Approvals

DNV

Approval ID: TAE000037S



CSA

Approval ID: 013631_0_000

| | Nominal Voltage U_N | Nominal Current I_N | Cross Section AWG | Cross Section mm^2 |
|--|-----------------------|-----------------------|-------------------|-----------------------------|
| | 600 V | 18 A | - 12 | - |



UL Recognized

Approval ID: FILE E 118976

| | Nominal Voltage U_N | Nominal Current I_N | Cross Section AWG | Cross Section mm^2 |
|--|-----------------------|-----------------------|-------------------|-----------------------------|
| | 600 V | 20 A | - 12 | - |



EAC

Approval ID: RU C-DE.AI30.B.01102



EAC

Approval ID: RU C-DE.BL08.B.00511

Contact insert - HC-BB10-I-CT-F



1584703

<https://www.phoenixcontact.com/pc/products/1584703>

Classifications

ECLASS

| | |
|---------------|----------|
| ECLASS-9.0 | 27440205 |
| ECLASS-10.0.1 | 27440205 |
| ECLASS-11.0 | 27440205 |

ETIM

| | |
|----------|----------|
| ETIM 8.0 | EC000438 |
|----------|----------|

UNSPSC

| | |
|-------------|----------|
| UNSPSC 21.0 | 39121500 |
|-------------|----------|

Contact insert - HC-BB10-I-CT-F



1584703

<https://www.phoenixcontact.com/pc/products/1584703>

Environmental Product Compliance

| | |
|------------|---|
| China RoHS | Environmentally friendly use period: unlimited = EFUP-e |
| | No hazardous substances above threshold values |

Contact insert - HC-BB10-I-CT-F

1584703

<https://www.phoenixcontact.com/pc/products/1584703>



Accessories

Coding bolt

Coding bolt - HC-CB - 1772722

<https://www.phoenixcontact.com/pc/products/1772722>



Coding pin, prevents mismatching of up to six connectors with an identical number of positions

Assembly tool

Assembly tool - UNIFOX MT-CK 1.6/2.5 - 1089092

<https://www.phoenixcontact.com/pc/products/1089092>



Assembly tool, for CK 1.6... crimp contacts for small conductor cross sections

Contact insert - HC-BB10-I-CT-F

1584703

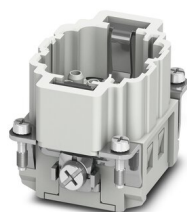
<https://www.phoenixcontact.com/pc/products/1584703>



Contact insert

Contact insert - HC-BB10-I-CT-M - 1584774

<https://www.phoenixcontact.com/pc/products/1584774>



HEAVYCON pin insert, series: BB10, 10-pos., crimp connection, with plastic coding profile, can be coded

DIN rail mounting frame

DIN rail mounting frame - HC-CIF-B06-HFWL-PL - 1424334

<https://www.phoenixcontact.com/pc/products/1424334>



DIN rail mounting frame, type: B6, for contact inserts, Top frame

Contact insert - HC-BB10-I-CT-F

1584703

<https://www.phoenixcontact.com/pc/products/1584703>



DIN rail mounting frame

DIN rail mounting frame - HC-CIF-B06-24-BFAFL-PL - 1424338

<https://www.phoenixcontact.com/pc/products/1424338>



DIN rail mounting frame, type: B6 - B24, for contact inserts, Base frame

Adapter

Adapter - HC-B-PE-PT - 1054672

<https://www.phoenixcontact.com/pc/products/1054672>



PE adapter with PT connection, for 1 PE connection, for HC-B / HC-BB / HC-DD / HC-D40 / HC-D64 contact inserts

Contact insert - HC-BB10-I-CT-F

1584703

<https://www.phoenixcontact.com/pc/products/1584703>



Coding element

Coding element - HC-CP-CK2.5-PL - 1095419

<https://www.phoenixcontact.com/pc/products/1095419>

Dummy socket for contact carrier with turned CK 2,5-ED... socket contacts. For HC-A../HC-BB../HC-M... series contact inserts.



Coding element

Coding element - HC-CST - 1676857

<https://www.phoenixcontact.com/pc/products/1676857>

Coding peg for coding up to 16 connectors



Contact insert - HC-BB10-I-CT-F

1584703

<https://www.phoenixcontact.com/pc/products/1584703>



Coding element

Coding element - HC-CBU - 1676860

<https://www.phoenixcontact.com/pc/products/1676860>



Coding socket for coding up to 16 connectors

Coding profile

Coding profile - CP-HC-S - 1410916

<https://www.phoenixcontact.com/pc/products/1410916>



Coding profile, 4 elements per star, for insertion in a coding keyway, for contact inserts HC-BB... / HC-A10-I-UT... / HC-A16-I-UT...

Contact insert - HC-BB10-I-CT-F

1584703

<https://www.phoenixcontact.com/pc/products/1584703>



Adapter plate

Adapter plate - HC-B24/6-ADP-SS - 1034215

<https://www.phoenixcontact.com/pc/products/1034215>

Adapter plate, type: B24 to B6



Strain relief clamp

Strain relief clamp - HC-B-ZG - 1685327

<https://www.phoenixcontact.com/pc/products/1685327>

Strain relief clamps contact inserts of series: B-, BB-, D 40, D 64, DD and HV, straight cable exit



Contact insert - HC-BB10-I-CT-F

1584703

<https://www.phoenixcontact.com/pc/products/1584703>

Strain relief clamp

Strain relief clamp - HC-B-ZS - 1685330

<https://www.phoenixcontact.com/pc/products/1685330>



Strain relief clamps contact inserts of series: B-, BB-, D 40, D 64, DD and HV, lateral cable exit

Screw

Screw - HC-B-PES - 1604997

<https://www.phoenixcontact.com/pc/products/1604997>



PE screw, for contact inserts HC-B / HC-BB / HC-DD / HC-D40 / HC-D64

Contact insert - HC-BB10-I-CT-F

1584703

<https://www.phoenixcontact.com/pc/products/1584703>



Contact removal tool

Contact removal tool - UNIFOX RT-CK 2.5 - 1072067

<https://www.phoenixcontact.com/pc/products/1072067>



Contact removal tool, for turned CK 2,5... contacts

Docking frames

Docking frames - HC-B 6-ANDOCK - 1586112

<https://www.phoenixcontact.com/pc/products/1586112>



Docking frames for racks, for type B6 contact inserts, with 4 M5 flat headed screws, slide-in offset for x/y axis of ± 1.5 mm

Contact insert - HC-BB10-I-CT-F

1584703

<https://www.phoenixcontact.com/pc/products/1584703>

Crimp contact

Crimp contact - CK2,5-ED-0,50BU AG - 1663640

<https://www.phoenixcontact.com/pc/products/1663640>



Crimp contact, contact diameter: 2.5 mm, turned, Socket, contact material: Copper alloy, contact surface: silver-plated, connection cross section: 0.5 mm² ... 0.5 mm², AWG 20

Crimp contact

Crimp contact - CK2,5-ED-0,75BU AG - 1663653

<https://www.phoenixcontact.com/pc/products/1663653>



Turned 2.5 crimp contact, individual female contact, core diameter 0.75 mm², silver-plated

Contact insert - HC-BB10-I-CT-F

1584703

<https://www.phoenixcontact.com/pc/products/1584703>



Crimp contact

Crimp contact - CK2,5-ED-1,00BU AG - 1663666

<https://www.phoenixcontact.com/pc/products/1663666>



Turned 2.5 crimp contact, individual female contact, core diameter 0.75 to 1.00 mm², silver-plated

Crimp contact

Crimp contact - CK2,5-ED-1,50BU AG - 1663679

<https://www.phoenixcontact.com/pc/products/1663679>



Crimp contact, contact diameter: 2.5 mm, turned, Socket, contact material: Copper alloy, contact surface: silver-plated, connection cross section: 1.5 mm² ... 1.5 mm², AWG 16

Contact insert - HC-BB10-I-CT-F

1584703

<https://www.phoenixcontact.com/pc/products/1584703>



Crimp contact

Crimp contact - CK2,5-ED-2,50BU AG - 1663682

<https://www.phoenixcontact.com/pc/products/1663682>



Turned 2.5 crimp contact, individual female contact, core diameter 2.5 mm², silver-plated

Crimp contact

Crimp contact - CK2,5-ED-3,00BU AG - 1663695

<https://www.phoenixcontact.com/pc/products/1663695>



Crimp contact, contact diameter: 2.5 mm, turned, Socket, contact material: Copper alloy, contact surface: hard-silver plated, connection cross section: 3 mm² ... 3 mm², AWG 12

Contact insert - HC-BB10-I-CT-F

1584703

<https://www.phoenixcontact.com/pc/products/1584703>

Crimp contact

Crimp contact - CK2,5-ED-4,00BU AG - 1663705

<https://www.phoenixcontact.com/pc/products/1663705>



Crimp contact, contact diameter: 2.5 mm, turned, Socket, contact material: Copper alloy, contact surface: silver-plated, connection cross section: 4 mm² ... 4 mm², AWG 12

Crimp contact

Crimp contact - CK2,5-ED-0,37BU AU - 1585647

<https://www.phoenixcontact.com/pc/products/1585647>



Crimp contact, contact diameter: 2.5 mm, turned, Socket, contact material: Copper alloy, contact surface: gold-plated, connection cross section: 0.14 mm² ... 0.37 mm², AWG 22 ... 26

Contact insert - HC-BB10-I-CT-F

1584703

<https://www.phoenixcontact.com/pc/products/1584703>



Crimp contact

Crimp contact - CK2,5-ED-0,50BU AU - 1674859

<https://www.phoenixcontact.com/pc/products/1674859>



Turned 2.5 crimp contact, individual female contact, core diameter 0.5 mm², gold-plated

Crimp contact

Crimp contact - CK2,5-ED-1,00BU AU - 1674833

<https://www.phoenixcontact.com/pc/products/1674833>



Turned 2.5 crimp contact, individual female contact, core diameter 0.75 to 1.0 mm², gold-plated

Contact insert - HC-BB10-I-CT-F

1584703

<https://www.phoenixcontact.com/pc/products/1584703>

Crimp contact

Crimp contact - CK2,5-ED-1,50BU AU - 1674820

<https://www.phoenixcontact.com/pc/products/1674820>



Crimp contact, contact diameter: 2.5 mm, turned, Socket, contact material: Copper alloy, contact surface: gold-plated, connection cross section: 1.5 mm² ... 1.5 mm², AWG 16

Crimp contact

Crimp contact - CK2,5-ED-2,50BU AU - 1674862

<https://www.phoenixcontact.com/pc/products/1674862>



Crimp contact, contact diameter: 2.5 mm, turned, Socket, contact material: Copper alloy, contact surface: gold-plated, connection cross section: 2.5 mm² ... 2.5 mm², AWG 14

Contact insert - HC-BB10-I-CT-F

1584703

<https://www.phoenixcontact.com/pc/products/1584703>



Crimp contact

Crimp contact - CK2,5-ED-4,00BU AU - 1674846

<https://www.phoenixcontact.com/pc/products/1674846>



Turned 2.5 crimp contact, individual female contact, core diameter 4.00 mm², gold-plated

Crimping pliers

Crimping pliers - CRIMPFOX-1,6/2,5-ED-4,0 - 1687419

<https://www.phoenixcontact.com/pc/products/1687419>



Crimping pliers, for turned contacts, CK 1.6 ED... and CK 2.5 ED...

Contact insert - HC-BB10-I-CT-F

1584703

<https://www.phoenixcontact.com/pc/products/1584703>



Crimping pliers

Crimping pliers - CRIMPFOX-TC 4 - 1212113

<https://www.phoenixcontact.com/pc/products/1212113>



Crimping pliers, for CK 1,6-ED..., CK 2,5-ED..., CK 4,0-ED... turned contacts, 4 marked die stations, unlockable pressure lock, lateral entry, incl. positioning tool

Crimping pliers with digital display

Crimping pliers with digital display - CRIMPFOX-TC MP-6 - 1202888

<https://www.phoenixcontact.com/pc/products/1202888>



Crimping tool, for turned contacts, universal cross-section setting, up to a maximum of 6.0 mm², digital display with 0.01 mm increments, pressure lock can be unlocked, positioning tool necessary as an accessory for contact positioning

Contact insert - HC-BB10-I-CT-F

1584703

<https://www.phoenixcontact.com/pc/products/1584703>



PE multiplier

PE multiplier - HC-B-2PE-PT - 1054675

<https://www.phoenixcontact.com/pc/products/1054675>



PE adapter with PT connection, for 2 PE connections, for HC-B / HC-BB / HC-DD / HC-D40 / HC-D64 contact inserts

PE multiplier

PE multiplier - HC-B-3PE - 1644326

<https://www.phoenixcontact.com/pc/products/1644326>



PE multiplier, for 3 PE connections, for HC-B / HC-BB / HC-DD / HC-D40 / HC-D64 contact inserts

Phoenix Contact 2022 © - all rights reserved
<https://www.phoenixcontact.com>

PHOENIX CONTACT GmbH & Co. KG
Flachsmarktstraße 8
D-32825 Blomberg
+49 (0) 5235-3 00
info@phoenixcontact.com