

DIN rail bus connectors - ME 22,5 TBUS ADAPTER KMGY

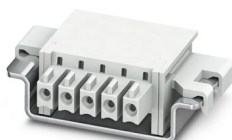


2201756

<https://www.phoenixcontact.com/pc/products/2201756>

Please be informed that the data shown in this PDF document is generated from our Online Catalog. Please find the complete data in the user documentation. Our General Terms of Use for Downloads are valid.

DIN rail bus adapter for ME and ME-MAX, design width: 22.5 mm, 5 parallel positions, color: light gray (similar to RAL 7035)



Your advantages

- Space-saving DIN rail mounting

Commercial Data

Item number	2201756
Packing unit	50 pc
Minimum order quantity	1 pc
Product Key	ACHACA
Catalog Page	Page 39 (NTK-2014)
GTIN	4046356909020
Weight per Piece (including packing)	4.065 g
Weight per Piece (excluding packing)	4 g
Customs tariff number	85366990
Country of origin	DE

DIN rail bus connectors - ME 22,5 TBUS ADAPTER KMGY



2201756

<https://www.phoenixcontact.com/pc/products/2201756>

Technical Data

Notes

Recommendation	Material of contact pads for bus connector, galvanic gold (hard gold)
----------------	---

Product properties

Product type	DIN rail connector
Number of positions	5
Pitch	3.81 mm

Dimensions

Width	22.5 mm
Pitch	3.81 mm

Material specifications

Color	light grey
Flammability rating according to UL 94	V0
Insulating material	PA
Housing material	Polyamide

DIN rail bus connectors - ME 22,5 TBUS ADAPTER KMGY



2201756

<https://www.phoenixcontact.com/pc/products/2201756>

Approvals

 cUL Recognized Approval ID: E118976-20151204				
	Nominal Voltage U_N	Nominal Current I_N	Cross Section AWG	Cross Section mm^2
	150 V	6 A	-	-

 UL Recognized Approval ID: E118976-20151204				
	Nominal Voltage U_N	Nominal Current I_N	Cross Section AWG	Cross Section mm^2
	150 V	8 A	-	-

cULus Recognized

DIN rail bus connectors - ME 22,5 TBUS ADAPTER KMGY



2201756

<https://www.phoenixcontact.com/pc/products/2201756>

Classifications

ECLASS

ECLASS-9.0	27440402
ECLASS-10.0.1	27440402
ECLASS-11.0	27460201

ETIM

ETIM 8.0	EC002637
----------	----------

UNSPSC

UNSPSC 21.0	39121400
-------------	----------

DIN rail bus connectors - ME 22,5 TBUS ADAPTER KMGY



2201756

<https://www.phoenixcontact.com/pc/products/2201756>

Environmental Product Compliance

China RoHS	Environmentally friendly use period: unlimited = EFUP-e
	No hazardous substances above threshold values

DIN rail bus connectors - ME 22,5 TBUS ADAPTER KMGY



2201756

<https://www.phoenixcontact.com/pc/products/2201756>

Accessories

Printed-circuit board connector

Printed-circuit board connector - IMC 1,5/ 5-ST-3,81 AU - 1943276

<https://www.phoenixcontact.com/pc/products/1943276>



PCB connector, nominal cross section: 1.5 mm², color: green, nominal current: 8 A, rated voltage (III/2): 160 V, contact surface: Gold, type of contact: Male connector, number of potentials: 5, number of rows: 1, number of positions: 5, number of connections: 5, product range: IMC 1,5/...-ST, pitch: 3.81 mm, connection method: Screw connection with tension sleeve, screw head form: L Slotted, conductor/PCB connection direction: 0 °, number of solder pins per potential: 1, plug-in system: COMBICON MC 1,5, locking: without, mounting: without, type of packaging: packed in cardboard

Printed-circuit board connector

Printed-circuit board connector - IMC 1,5/ 5-ST-3,81 GY7035 AU - 1719707

<https://www.phoenixcontact.com/pc/products/1719707>



PCB connector, nominal cross section: 1.5 mm², color: light grey, nominal current: 8 A, rated voltage (III/2): 160 V, contact surface: Gold, type of contact: Male connector, number of potentials: 5, number of rows: 1, number of positions: 5, number of connections: 5, product range: IMC 1,5/...-ST, pitch: 3.81 mm, connection method: Screw connection with tension sleeve, screw head form: L Slotted, conductor/PCB connection direction: 0 °, number of solder pins per potential: 1, plug-in system: COMBICON MC 1,5, locking: without, mounting: without, type of packaging: packed in cardboard

Phoenix Contact 2022 © - all rights reserved

<https://www.phoenixcontact.com>

PHOENIX CONTACT GmbH & Co. KG

Flachsmarktstraße 8

D-32825 Blomberg

+49 (0) 5235-3 00

info@phoenixcontact.com