

E AB A 180X130X100 20PT - Junction box



3002001

<https://www.phoenixcontact.com/nz/products/3002001>

Please be informed that the data shown in this PDF document is generated from our online catalog. Please find the complete data in the user documentation. Our general terms of use for downloads are valid.



Junction box, With 20 terminal blocks, 2.5 mm² with push-in technology, material: ABS, gray, 180 mm x 130 mm x 100 mm, type of locking: Screw-on cover

Your advantages

- Terminal box with cover and pre-assembled terminal strip
- Fast wiring without the need for additional components

Commercial data

Item number	3002001
Packing unit	1 pc
Minimum order quantity	1 pc
Sales key	BH8231
Product key	BH8231
GTIN	4055626083841
Weight per piece (including packing)	828 g
Weight per piece (excluding packing)	765 g
Country of origin	IN

E AB A 180X130X100 20PT - Junction box



3002001

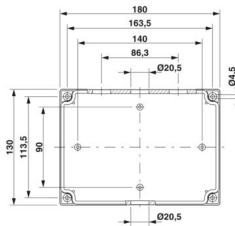
<https://www.phoenixcontact.com/nz/products/3002001>

Technical data

Product properties

Product type	Terminal box
Insulation characteristics	
Protection class	II

Dimensions

Dimensional drawing	
Width	180 mm
Height	130 mm
Depth	100 mm

Material specifications

Color	gray
Material	ABS
Flammability rating according to UL 94	UL-94 HB
Seal material	Silicon
Type of insulation	full protective insulation
Components	halogen-free

Mechanical properties

General

Type of locking (GRP)	Screw-on cover Phillips-Recess
-----------------------	--------------------------------

Environmental and real-life conditions

Degree of protection (IP code)

Degree of protection	IP67
----------------------	------

Ambient conditions

Ambient temperature (operation)	-25 °C ... 60 °C
---------------------------------	------------------

Mounting

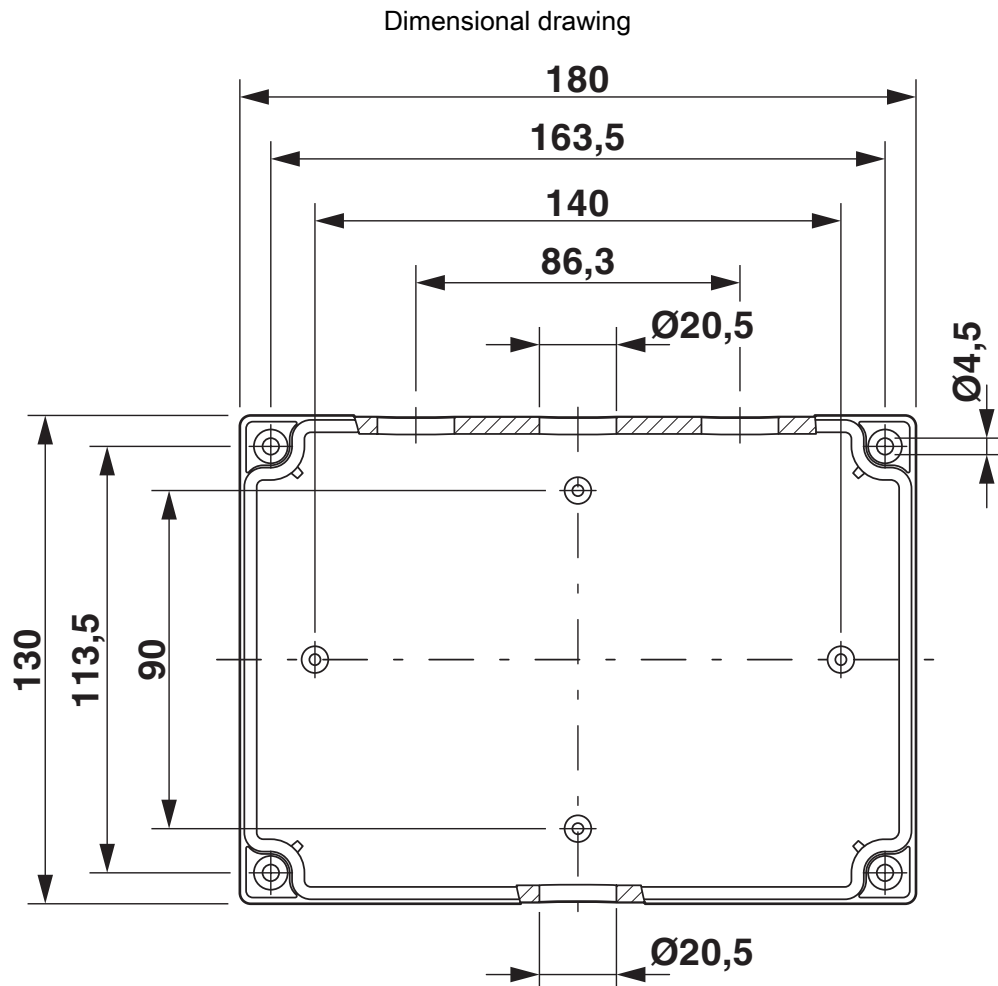
Assembly note	Screw connection in housing base
---------------	----------------------------------

E AB A 180X130X100 20PT - Junction box

3002001

<https://www.phoenixcontact.com/nz/products/3002001>

Drawings



E AB A 180X130X100 20PT - Junction box



3002001

<https://www.phoenixcontact.com/nz/products/3002001>

Approvals

📄 To download certificates, visit the product detail page: <https://www.phoenixcontact.com/nz/products/3002001>



EAC

Approval ID: RU C-DE.BL08.B.00582

E AB A 180X130X100 20PT - Junction box



3002001

<https://www.phoenixcontact.com/nz/products/3002001>

Classifications

ECLASS

ECLASS-13.0	27180101
ECLASS-15.0	27180101

ETIM

ETIM 9.0	EC000261
----------	----------

UNSPSC

UNSPSC 21.0	31261500
-------------	----------

E AB A 180X130X100 20PT - Junction box



3002001

<https://www.phoenixcontact.com/nz/products/3002001>

Environmental product compliance

EU RoHS

Fulfills EU RoHS substance requirements	Yes, No exemptions
---	--------------------

China RoHS

Environment friendly use period (EFUP)	EFUP-E
	No hazardous substances above the limits

EU REACH SVHC

REACH candidate substance (CAS No.)	No substance above 0.1 wt%
-------------------------------------	----------------------------

Phoenix Contact 2025 © - all rights reserved

<https://www.phoenixcontact.com>

PHOENIX CONTACT Ltd

Unit 15C, 906-930 Great South Road, Penrose

Auckland 1061

0508 474 636

sales@phoenixcontact.co.nz